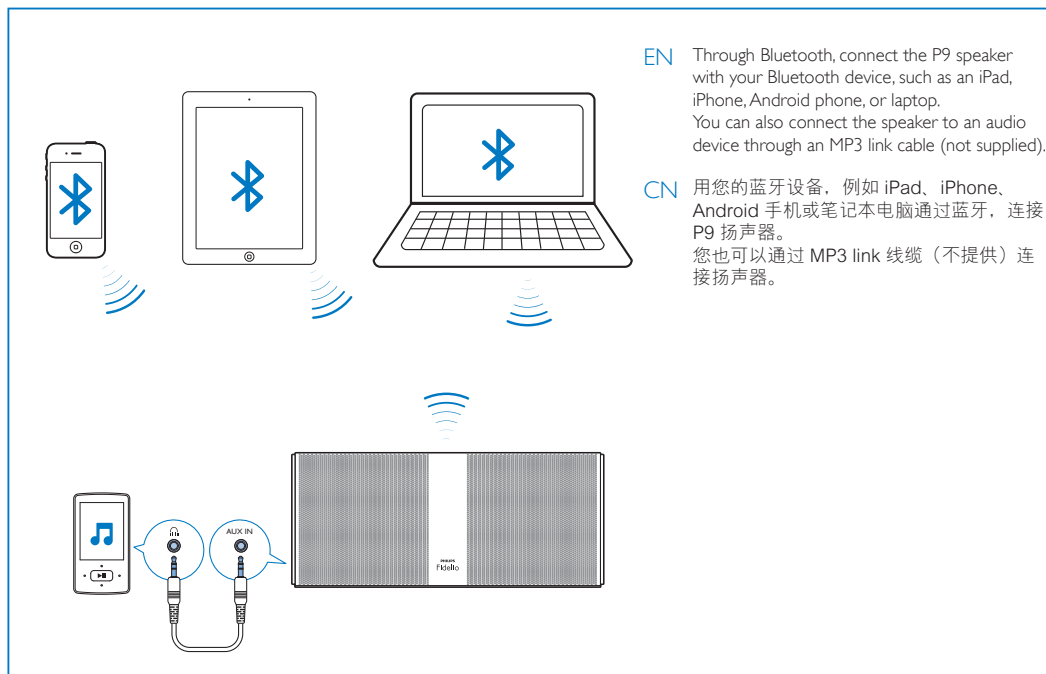
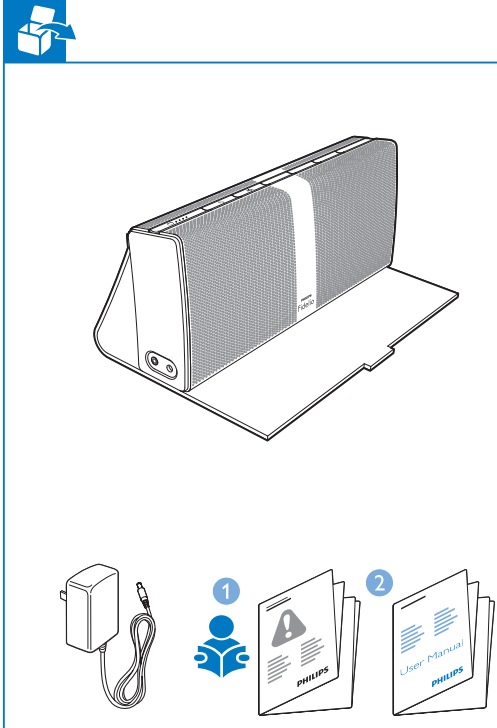




EN User Manual

ZH-CN 用户手册

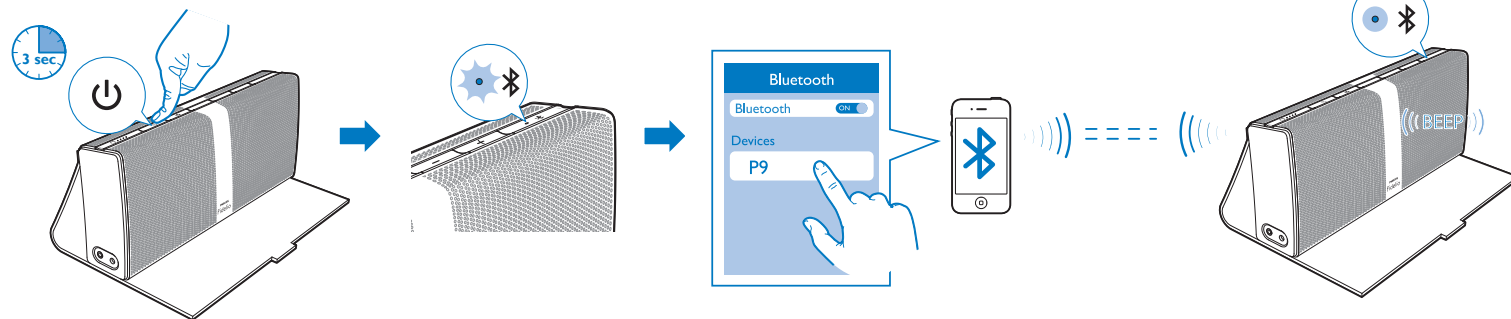
PHILIPS



EN Through Bluetooth, connect the P9 speaker with your Bluetooth device, such as an iPad, iPhone, Android phone, or laptop. You can also connect the speaker to an audio device through an MP3 link cable (not supplied).

CN 用您的蓝牙设备，例如 iPad、iPhone、Android 手机或笔记本电脑通过蓝牙，连接 P9 扬声器。您也可以通过 MP3 link 线缆（不提供）连接扬声器。

Switch on & Connect 打开并连接



EN Press and hold **⏻** to switch on or off.

Pairing with a device for the first time: White and blue light flashes alternately.
Connecting with a paired device: White light flashes.

On your Bluetooth device, activate Bluetooth and search for P9. For the first-time connection, select P9 to start pairing. If necessary, enter the passcode.

Connected: White light is always on and a Beep sounds. Next time you switch on P9, the speaker connects to the last paired device automatically.

CN 按住 **⏻** 可打开或关闭。

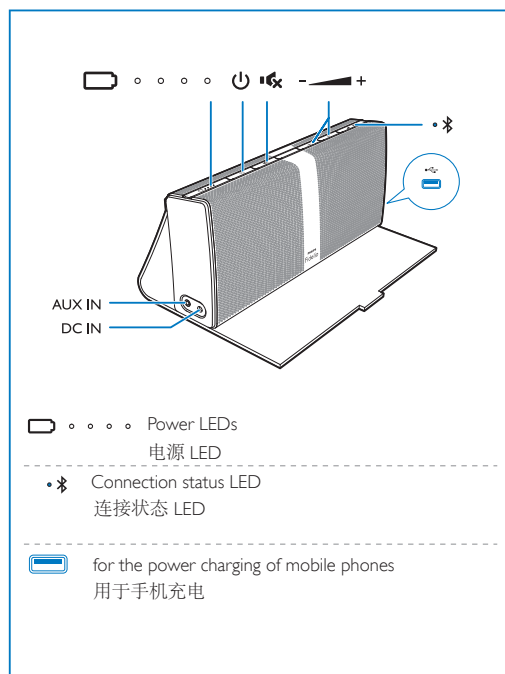
首次与设备配对：白色和蓝色指示灯交替闪烁。
正在连接至已配对设备：白色指示灯闪烁。

在您的蓝牙设备上激活蓝牙，并且搜索 P9。首次连接时，请选择 P9 以开始配对。如果成功，请输入密码。

已连接：白色指示灯持续亮起，并发出一声哔声。您下次开启 P9 时，扬声器将自动连接至上次配对的设备。

All registered and unregistered trademarks are property of their respective owners.
© 2012 Koninklijke Philips Electronics N.V. All rights reserved.

P9_UM_93_V1.0_WK1241.4

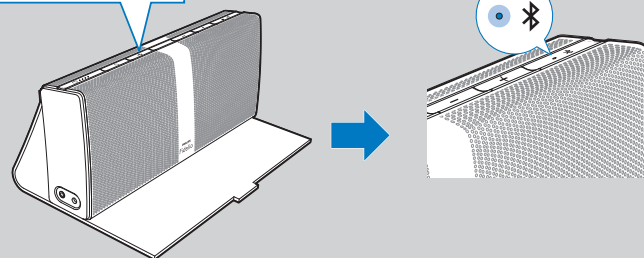


- Power LEDs
电源 LED
- Connection status LED
连接状态 LED
- for the power charging of mobile phones
用于手机充电

Reset 重置

EN To clear the paired devices from your speaker, press and hold **⏻** and **⏮** until the amber light is on.

CN 要从扬声器上清除已配对的设备，请按住 **⏻** 和 **⏮**，直到琥珀色指示灯亮起。



The amber light is on after the paired devices are cleared. Then, the white and blue light flashes alternately. You enter the pairing mode.

已配对的设备清除后，琥珀色指示灯将亮起。然后，白色和蓝色指示灯交替闪烁。您进入了配对模式。

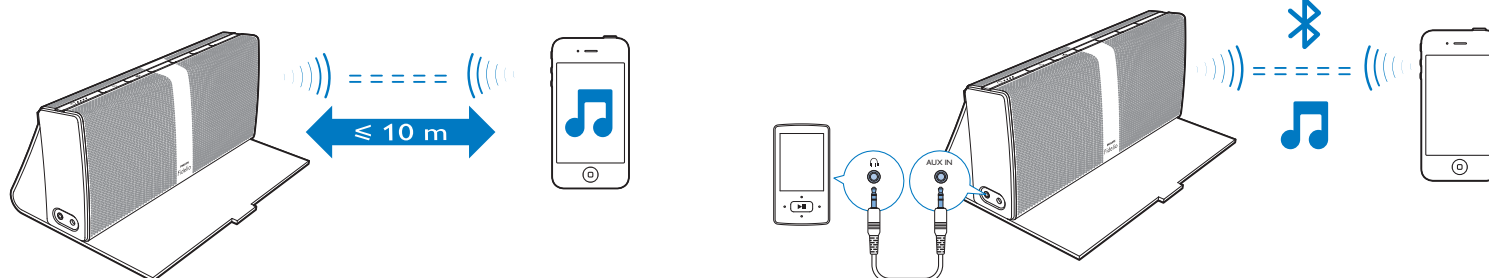
www.philips.com/support



EN Go to www.philips.com/support for support information.

CN 访问 www.philips.com/support 获得帮助

Play 播放



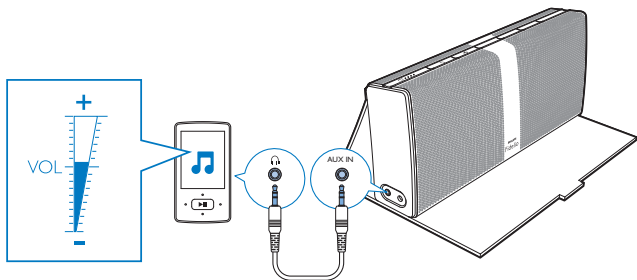
EN After successful connection, start music play on the Bluetooth device. The music streaming may be interrupted by obstacles between the device and P9, such as walls, or other devices nearby that operate in the same frequency.

CN 成功连接后，在蓝牙设备上开始播放音乐。
音乐传输可能因设备和 P9 之间的障碍物，例如墙壁或附近以相同频率运行的其它设备而中断。

If P9 is connected through Bluetooth and an MP3 link cable at the same time, music should play through Bluetooth.

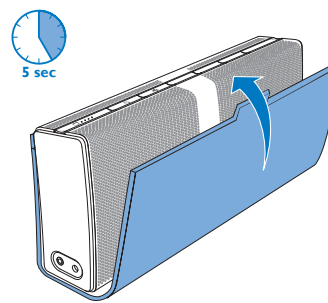
如果 P9 同时通过蓝牙和 MP3 link 线缆连接，音乐将通过蓝牙播放。

Play 播放



EN When music plays from the speaker through an MP3 link cable, increase the volume on the audio player if necessary.

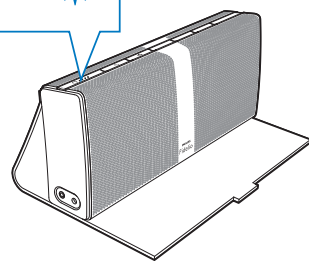
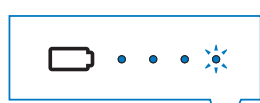
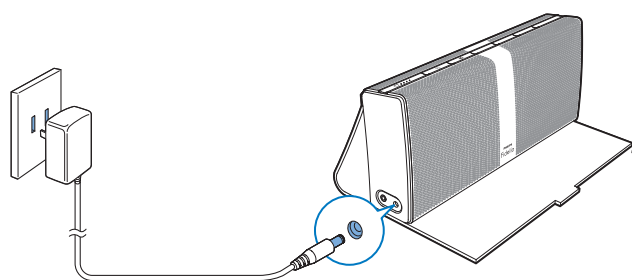
CN 当音乐通过 MP3 link 线缆从扬声器中播放时，如有必要，请在音频播放器上增大音量。



When you close the protective cover, the music play is muted. To unmute, open the cover within five seconds. When the protective cover is closed for more than five seconds, the speaker is switched off.

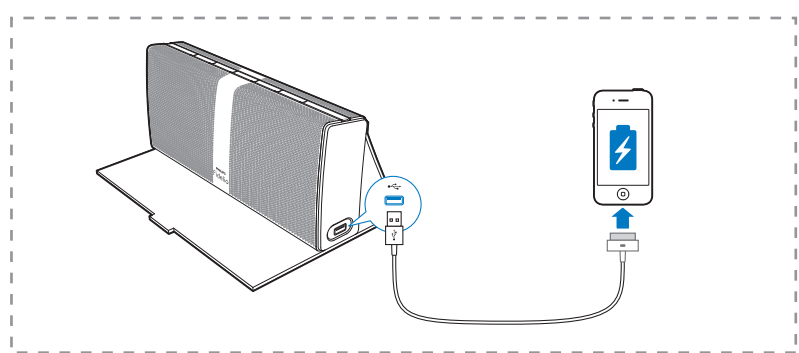
如果您关闭保护盖，音乐播放将静音。要取消静音，请在 5 秒内打开保护盖。如果保护盖关闭超过 5 秒，扬声器将关闭。

Charge 充电

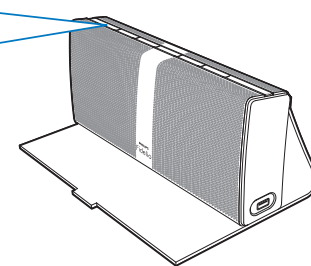
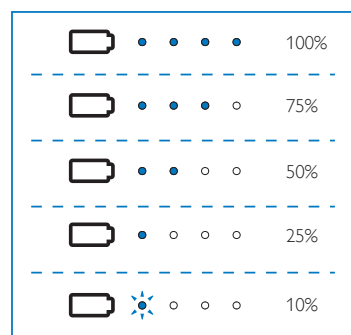
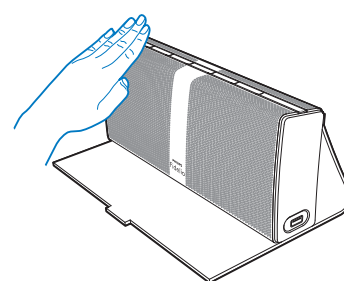


EN **Charging ongoing:** The four power LEDs light up white alternately. **Charging complete:** All four power LEDs light up white.

CN 正在充电：四个电源 LED 指示灯呈白色交替亮起。充电完成：全部四个电源 LED 指示灯呈白色亮起。



Check battery level 检查电池电量



EN To check the battery level, touch the speaker. The power LEDs light up. The red light flashes when the battery is low.

CN 要检查电池电量，请轻触扬声器。电源 LED 指示灯亮起。电池电量低时，红色指示灯闪烁。

Specifications 规格

Amplifier

Rated output power: 2 X 10 RMS (THD= 1%)
Signal to noise ratio: > 65 dB

AUDIO-IN: 0.6V RMS 22 kOhm

Bluetooth

Standard: Bluetooth Standard Version 2.1 + EDR
Frequency band: 2.402 ~ 2.480 GHz ISM Band
Range: 10 m (free space)

General information

AC power

Philips OH-1028A1502000U-CCC
Input: 100-240V ~ 50/60 Hz, 800 mA MAX
Output: 15V DC, 2 A

Built-in battery

Model no.: ICR18650X3
Cell Model: ICR18650
Rating: 2200 mAh, 11.1V

Operation Power Consumption: <30 W

Charging

maximum 1000 mA for USB, 600 mA for power adapter (power off)

Dimensions

Main Unit (W x H x D): 287 x 125 x 55 mm

Weight

Main Unit: 1.3 kg

功放器

额定输出功率: 2 X 10 RMS (THD= 1%)
信噪比: > 65dB

AUDIO IN: 0.6 伏 RMS 22 千欧

蓝牙

标准: 蓝牙标准版本 2.1 + EDR
频段: 2.402 ~ 2.480 GHz ISM 频段
范围: 10 米 (开阔空间)

一般信息

交流电源

飞利浦 OH-1028A1502000U-CCC
输入: 交流 100-240 伏 50/60 赫兹, 最大 800 毫安
输出: 直流 15 伏 2 安

内置电池

型号: ICR18650X3
电池型号: ICR18650
额定值: 2200 毫安时, 11.1 伏

操作功耗: <30 瓦

充电

使用 USB 连接时最大 1000 毫安, 使用电源适配器时最大 600 毫安 (关机状态)

尺寸

主装置 (宽 x 高 x 厚): 287 毫米 x 125 毫米 x 55 毫米

重量

主装置: 1.3 千克