



Philips  
Speaker System

1000W  
NX



NTX400

## The ultimate sound tower

Party like at the club with up to 1000W power and thumping bass boosted by NX Bass technology. Start playing wirelessly from Bluetooth compatible devices, MP3 CD, USB and other devices through audio in.

### Designed to party

- 260K LED lights for great party atmosphere

### Engineered for powerful sound

- NX bass button for instant sound boost & light effects
- 1000W RMS total output power

### Enjoy your music from multiple sources

- Stream music via Bluetooth®
- Enjoy MP3 music directly from your portable USB devices
- Pair with your NFC enabled device with one touch
- Rip music from CDs onto a USB device

# PHILIPS

# Specifications

## Sound

- Total Sound Power (RMS): 1000 W
- Sound enhancement: NX Bass, Dynamic Bass Boost 3 steps, Digital sound control 5 modes
- Output Power: 1000W

## Loudspeakers

- Number of speaker boxes: 1
- Speaker drivers: 2 x 6.5" woofer, 2" tweeter x 2
- Speaker types: bass reflex speaker system

## Audio playback

- Playback media: CD, CD-R, CD-RW, MP3-CD
- Disc playback modes: repeat/one/all/program, repeat/shuffle/program
- USB Direct playback modes: fast backward/fast forward, play/pause, previous/next, repeat, shuffle, stop

## Audio recording

- Recording media: USB device
- USB recording sources: CD, tuner, AUX, USB, Bluetooth
- USB recording modes: instant record, programmed tracks, schedule radio program, single disc, single track

## Tuner/Reception/Transmission

- Station presets: 20FM, 10AM
- Tuner bands: FM, MW
- Antenna: FM antenna, MW antenna
- Tuner enhancement: auto digital tuning, auto scan,

Easy set (plug & play)

## Connectivity

- USB
- Audio in: 3.5mm stereo line in
- Aux in: 2xRCA (Audio)

## Convenience

- Number of discs: 1
- Loader type: tray
- Light Effect: Peace, Passion, Power, Samba, Fiesta, Cielo, Custom

## Accessories

- Remote control: 28-key with 2xAAA batteries
- Others: batteries for remote control, FM/MW antenna, Quick start guide
- User Manual: multi-languages
- Warranty: World Wide Guarantee booklet

## Dimensions

- Main unit width: 287 mm
- Main unit height: 818 mm
- Main unit depth: 303 mm
- Packaging depth: 387 mm
- Packaging height: 390 mm
- Packaging width: 900 mm
- Gross Weight: 15.3 lb
- Net Weight: 13 kg

## Power

- Power supply: 100 - 240V AC, 50/60Hz



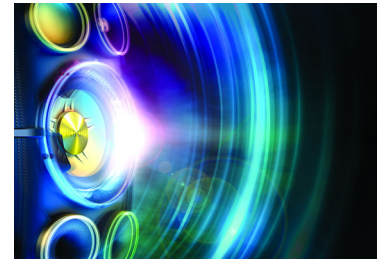
# Highlights

## 260K LED lights



Add the ultimate atmosphere, ambiance and passion to any party, with thousands of colored lights that flicker, flash and flow in time with your music. Easily choose light colors to match your theme, or just pick one of the systems many presets. Flick the NX bass button to make the light show even more intense.

## NX bass button



Available throughout the range, NX bass temporarily boosts bass and loudness to the extreme. Hit the NX bass button to instantly juice up your sound, make lighting effects go wild, and feel the immense bass of the subwoofers thundering through your bones.

## Stream music via Bluetooth®



If you've got a big music collection stored away on a smartphone, tablet or computer, stream it to a NITRO system using digital Bluetooth® wireless music streaming and make it sound incredible. Powerful sound is rarely this easy or this convenient.

## Easy NFC pairing

Pair with any NFC enabled device effortlessly. Gone is complicated wireless headphone pairing. Our new NFC technology is user friendly and easy to use, with one touch pairing for any NFC enabled smart device.



Issue date 2017-07-28

Version: 3.0.5

12 NC: 8670 001 34531  
EAN: 48 95185 62043 5

© 2017 Koninklijke Philips N.V.  
All Rights reserved.

Specifications are subject to change without notice.  
Trademarks are the property of Koninklijke Philips N.V.  
or their respective owners.

[www.philips.com](http://www.philips.com)