



Philips CarStudio
Car audio system

- CD
- USB

CarStudio

CEM2100

Experience live music in your car

Obsessed with sound

Philips CEM2100 lets you seamlessly enjoy multiple source music from CD, USB and portable MP3 players in your car. It features anti-theft detachable front panel for security and anti-shock protection for smooth grooves on the go.

Enjoy superior sound

- MAX Sound for instant power boost
- Music Zone for adjustable sweet spots
- Dynamic Bass Boost electronically enhances the low tones
- 2-band parametric equaliser with 8 presets
- Super anti-shock protection for smooth music enjoyment
- Built-in 50 W x 4 amplifiers for excellent sound quality

Design that blends into your car

- High contrast LCD for perfect viewing
- Detachable front panel for anti-theft security

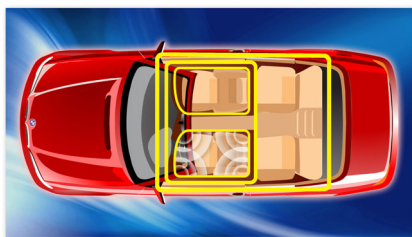
Easy to use

- MP3 Link for portable music playback
- Browse by folder or song for instant search or quick access
- Audio out for amplifier addition
- USB Direct for MP3/WMA music playback

PHILIPS

Highlights

Music Zone



Philips' innovative Music Zone technology lets the driver and the passengers enjoy their music with more vivid spatial effect, just as the artist intended it to be heard. Users can easily switch the music listening zones from the driver to the passengers and back again to get the best sonic focus in the car. A dedicated zone control button provides three pre-defined settings - Left, Right and Front (and All) - so you can best match your listening needs easily and dynamically alone or with your passengers.

DBB Dynamic Bass Boost



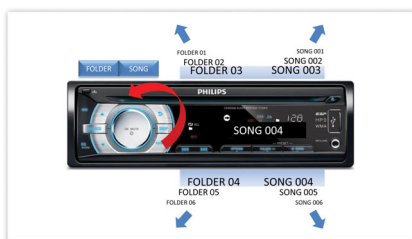
Activate the Dynamic Bass Boost (DBB), and the low-end bass frequencies are electronically enhanced to achieve consistent sound reproduction, especially when the speaker volume is set at a low level. You hear impressive bass at all times.

MP3 Link



The MP3 link connectivity allows direct playback of MP3 content from portable media players. Besides the benefit of enjoying your favourite music in the superior sound quality delivered by the audio system, the MP3 link is also extremely convenient as all you have to do is to plug your portable MP3 player into the audio system.

Browse by folder or song



This function allows you to find a track or album much faster by letting you browse through songs and folders, which are the usual contents of USB/SDHC devices. With the dedicated folder/song button, only three simple steps are needed to make a search – press folder/song, rotate the volume knob and push to select. This simple process lets you search through your music quickly and easily, letting you to focus on your driving.

MAX Sound



MAX Sound technology produces an instant boost in bass and treble, maximising volume performance and instantly creating the most impressive listening experience with just the touch of a button. Its sophisticated electronic circuitry calibrates existing sound and volume settings, instantly boosting bass, treble and volume beyond the original maximum levels without distortion. The end result is a noticeable amplification of both sound spectrum and volume and a potent audio boost that will add mileage to any music.

USB Direct



With the USB Direct mode, simply plug in your USB device to the USB port on your Philips device and your digital music will be played directly from the Philips device.

Specifications

Display

- Type: High contrast B/W LCD (9 characters)
- Key illumination: Red
- Diffused light in disc slot: Red

Playback media

- Disc: CD, CD-R, CD-RW, MP3-CD, WMA-CD, WMA
- USB flash drive
- MP3 Link: for portable MP3 music playback
- Music devices via Rear Aux

Audio Playback

- Compression format: MP3, WMA
- Disc Playback Modes: Fast Forward/Reverse, Next/Previous Album Search, Next/Previous Track Search
- ID3 Tag support: Song title, artist, album
- MP3 bit rates: 32-320 kbps and variable bit rate
- USB Direct Modes: Play/Pause, Previous/Next, Fast Reverse/Fast Forward, Repeat, Shuffle

Tuner/Reception/Transmission

- Tuner Bands: AM, FM Stereo
- Auto digital tuning
- Tuner Enhancements: Auto search and store
- No. of preset stations: 18 (FM), 12 (AM)

Sound

- Equalizer: 2-bands
- Equalizer settings: Classic, Jazz, Pop, Rock, Flat, Optimal, Techno, User defined
- Sound Enhancement: Dynamic Bass Boost, MAX Sound, Music zone
- Output power (MAX): 50 W x 4 channels
- Output power (RMS): 22 W x 4 channels (4 ohms, 10% T.H.D.)

Connectivity

- Preamp output: 1 pair RCA(L/R)
- Hard-wired audio mute
- Hard-wired remote input

Security/Anti-theft

- Front panel: Detachable

Accessories

- User Manual: English
- Quick start guide: English

Power

- Power supply: 12 V DC

Dimensions

- Product dimensions (W x H x D):
188 x 58 x 190 mm
- Chassis: 1 Din



Issue date 2013-05-10

Version: 3.2.1

12 NC: 8670 000 91231
EAN: 87 12581 64871 8

© 2013 Koninklijke Philips Electronics N.V.
All Rights reserved.

Specifications are subject to change without notice.
Trademarks are the property of Koninklijke Philips
Electronics N.V. or their respective owners.

www.philips.com