

# PHILIPS

CD Soundmachine

7000 Series

AZ797T



## User manual

Register your product and get support at:  
[www.philips.com/support](http://www.philips.com/support)

# Contents

---

<b>1</b>	<b>Important</b>	<b>2</b>
	Hearing safety	2

---

<b>2</b>	<b>Your CD Soundmachine</b>	<b>3</b>
	Introduction	3
	What's in the box	3
	Overview of the main unit	4
	Overview of the remote control	5

---

<b>3</b>	<b>Get started</b>	<b>7</b>
	Prepare the remote control	7
	Connect power	7
	Turn on	8
	Turn off	8

---

<b>4</b>	<b>Play</b>	<b>9</b>
	Play CD	9
	Play from USB devices	9
	Play from Bluetooth-enabled devices	9
	Play tape	10
	Play from an external device	11

---

<b>5</b>	<b>Play options</b>	<b>12</b>
	Control play	12
	Program tracks	12
	Adjust sound	12

---

<b>6</b>	<b>Listen to FM radio</b>	<b>13</b>
	Tune to FM radio stations	13
	Store radio stations automatically	13
	Store radio stations manually	13
	Select a preset radio station	13

---

<b>7</b>	<b>Other features</b>	<b>14</b>
	Set the sleep timer	14
	Adjust the display brightness	14
	Listen through the headphone	14

---

<b>8</b>	<b>Product information</b>	<b>15</b>
	Specifications	15
	Supported MP3 disc formats	16
	USB playability information	16
	Maintenance	16

---

<b>9</b>	<b>Troubleshooting</b>	<b>18</b>
----------	------------------------	-----------

---

<b>10</b>	<b>Notice</b>	<b>19</b>
	Compliance	19
	Trademark notice	20

# 1 Important



## Warning

- Never remove the casing of this apparatus.
  - Never lubricate any part of this apparatus.
  - Never look into the laser beam inside this apparatus.
  - Never place this apparatus on other electrical equipment.
  - Keep this apparatus away from direct sunlight, naked flames or heat.
  - Ensure that you always have easy access to the power cord, plug or adaptor to disconnect the apparatus from the power.
- 
- The device shall not be exposed to dripping or splashing.
  - Do not place any source of danger on the device (e.g. liquid filled objects, lit candles).
  - Where the MAINS plug or an appliance coupler is used as the disconnect device, the disconnect device shall remain readily operable.
  - Make sure that there is enough free space around the product for ventilation.
  - Battery usage CAUTION – To prevent battery leakage which may result in bodily injury, property damage, or damage to the unit:
    - Install all batteries correctly, + and - as marked on the unit.
    - Batteries (packed or installed) shall not be exposed to excessive heat such as sunshine, fire or the like.
    - Remove batteries when the unit is not used for a long time.
  - Only use attachments/accessories specified by the manufacturer.

---

## Hearing safety



## Caution

- To avoid hearing damage, limit the time you use the headphones at high volume and set the volume to a safe level. The louder the volume, the shorter is the safe listening time.

Be sure to observe the following guidelines when using your headphones.

- Listen at reasonable volumes for reasonable periods of time.
- Be careful not to adjust the volume as your hearing adapts.
- Do not turn up the volume so high that you can't hear what's around you.
- You should use with caution or temporarily discontinue use in potentially hazardous situations.
- Excessive sound pressure from earphones and headphones can cause hearing loss.

# 2 Your CD Soundmachine

---

## Introduction

With this CD Soundmachine, you can:

- listen to FM radio;
- enjoy audio from CD, tapes, USB device, Bluetooth device, and other external audio devices;
- program the play sequence of tracks.

The unit offers you Dynamic Bass Boost (DBB) and Digital Sound Control (DSC) to enrich sound.

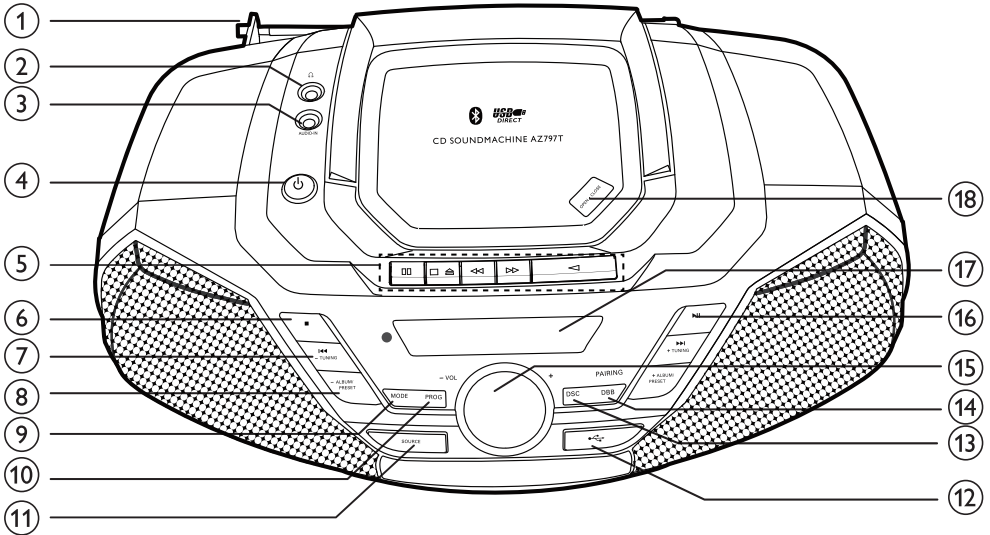
---












## What's in the box

Check and identify the contents of the package:

- Main unit
- AC power cord
- Remote control (with battery)
- Quick start guide & safety information
- Warranty leaflet

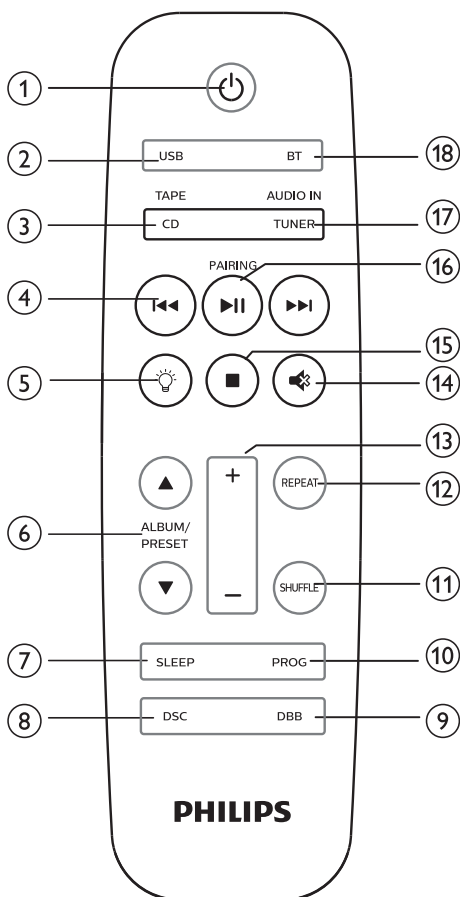
## Overview of the main unit



- ① **FM antenna**
  - Improve FM reception.
- ② 
  - Headphone jack.
- ③ **AUDIO-IN**
  - Connect an external audio device.
- ④ 
  - Turn the unit on or off.
- ⑤ **Tape controls**
  -  Start tape play.
  -  Fast rewind or fast forward the tape.
  -  /  Stop tape play or open the tape door.
  -  Pause tape play.
- ⑥ 
  - Stop play.
  - Erase a program.
- ⑦  /  **TUNING +/-**
  - Skip to the previous or next track.
  - Tune to FM radio stations.
  - Search within a track.
- ⑧ **ALBUM/PRESET +/-**
  - Select a preset radio station.
  - Skip to the previous or next album.
- ⑨ **MODE**
  - Select a play mode: repeat or shuffle.
- ⑩ **PROG**
  - Program tracks.
- ⑪ **SOURCE**
  - Select a source.
- ⑫ 
  - USB socket.
- ⑬ **DSC**
  - Select a preset sound setting.
- ⑭ **DBB/PAIRING**
  - Turn Dynamic Bass Boost on or off.
  - In Bluetooth mode, press and hold to enter pairing mode.
- ⑮ **VOL +/-**
  - Adjust volume.

- ⑫ **▶||**
  - Press to start or pause the play.
- ⑬ **Display panel**
  - Display current status.
- ⑭ **OPEN•CLOSE**
  - Open the disc compartment.

## Overview of the remote control



- ① **⏻**
  - Turn the unit on or off.
- ② **USB**
  - Press repeatedly to select the USB.
- ③ **CD/TAPE**
  - Select the DISC source.
  - Select the tape source.
- ④ **◀◀ / ▶▶**
  - Skip to the previous/next track.
  - Search within a track/disc/USB.
  - Tune to a radio station.
- ⑤ **💡**
  - Adjust the display brightness.
- ⑥ **ALBUM/PRESET ▲ / ▼**
  - Select a preset radio station.
  - Skip to the previous/next album.
- ⑦ **SLEEP**
  - Set sleep timer.
- ⑧ **DSC**
  - Select a preset sound setting.
- ⑨ **DBB**
  - Turn dynamic bass enhancement on/off.
- ⑩ **PROG**
  - Program tracks.
  - Program FM radio stations.
- ⑪ **SHUFFLE**
  - Select shuffle play mode.
- ⑫ **REPEAT**
  - Select repeat play mode.
- ⑬ **+/-**
  - Adjust volume.
- ⑭ **🔇**
  - Mute or restore volume.
- ⑮ **■**
  - Stop play or erase a program.

①⑥ **▶II/PAIRING**

- Start, pause, or resume play.
- Press and hold for 2 seconds to enter pairing mode.

①⑦ **TUNER/AUDIO IN**

- Select the FM source or AUDIO IN source.

①⑧ **BT**

- Press to select the BT (Bluetooth) source.

# 3 Get started

## ! Caution

- Use of controls or adjustments or performance of procedures other than herein may result in hazardous laser exposure or other unsafe operation.

Always follow the instructions in this chapter in sequence. If you contact Philips, you will be asked for the model and serial number of your apparatus. The model number and serial number are on the bottom of your apparatus. Write the numbers here:

Model No. \_\_\_\_\_

Serial No. \_\_\_\_\_

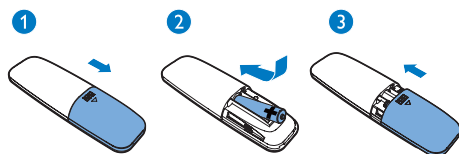
## Prepare the remote control

## ! Caution

- Risk of product damage! When the remote control is not used for long periods, remove the batteries.

To insert the remote control battery:

- 1 Open the battery compartment.
- 2 Insert the supplied AAA battery with correct polarity (+/-) as indicated.
- 3 Close the battery compartment.



## Connect power

The unit can be powered by either AC power or batteries.

## Option 1: AC power

## ! Warning

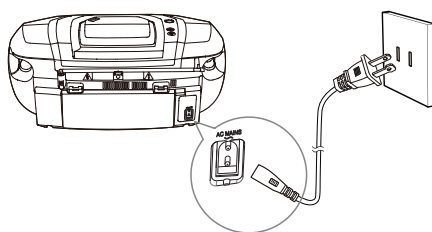
- Risk of product damage! Make sure that the power supply voltage corresponds to the voltage printed on the back or the underside of the unit.
- Risk of electric shock! When you disconnect the AC power, always pull the plug from the socket. Never pull the cord.

Connect the AC power cord to:

- the **AC~ MAINS** socket on the unit.
- the wall socket.

## \* Tip

- To save energy, turn the unit off after use.



## Option 2: Battery power

## ! Caution

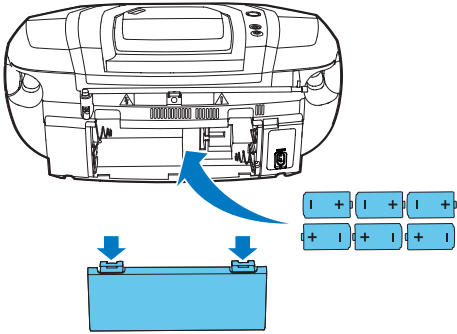
- Batteries contain chemical substances, so they should be disposed of properly.

## ≡ Note

- Batteries are not supplied with the unit.

- 1 Open the battery compartment.
- 2 Insert 6 batteries (type: R-20 or D CELL) with correct polarity (+/-) as indicated.
- 3 Close the battery compartment.





---

## Turn on

Press .

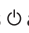
→ The unit switches to the last selected source.

### Tip

- To select a source, press SOURCE repeatedly or the source selection buttons on the remote control.

---

## Turn off

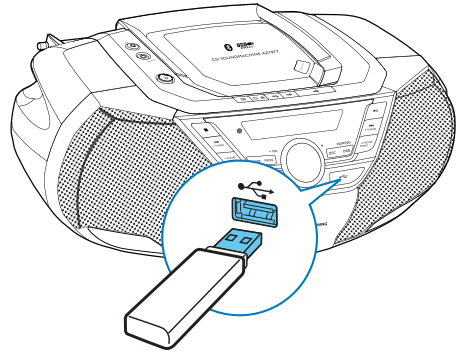
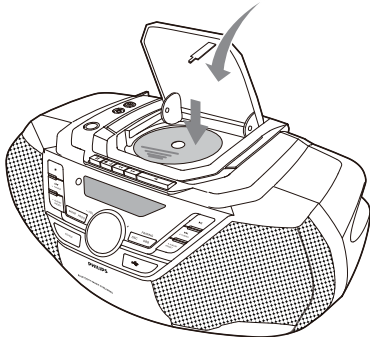
Press  again.

→ The backlight on the display panel turns off.

# 4 Play

## Play CD

- 1 Press **CD** to select the disc source.
- 2 Press **OPEN•CLOSE** to open the disc tray.
- 3 Insert a disc with the printed side facing up, then close the disc tray.  
→ Play starts automatically.



## Play from Bluetooth-enabled devices

With this product, you can listen to audio from Bluetooth-enabled devices.


### Note

- Before pairing a device with this product, read its user manual for Bluetooth compatibility. Make sure that the connected Bluetooth device supports the Advanced Audio Distribution Profile (A2DP) and the Audio Video Remote Control Profile (AVRCP).
- Make sure that Bluetooth function is enabled on your device, and your device is set as visible to all other Bluetooth devices.
- The operational range between this product and a Bluetooth device is approximately 10 meters (33feet).
- Any obstacle between this product and a Bluetooth device can reduce the operational range.
- Keep away from any other electronic device that may cause interference.

## Play from USB devices

### Note

- Make sure that the USB device contains playable audio content.

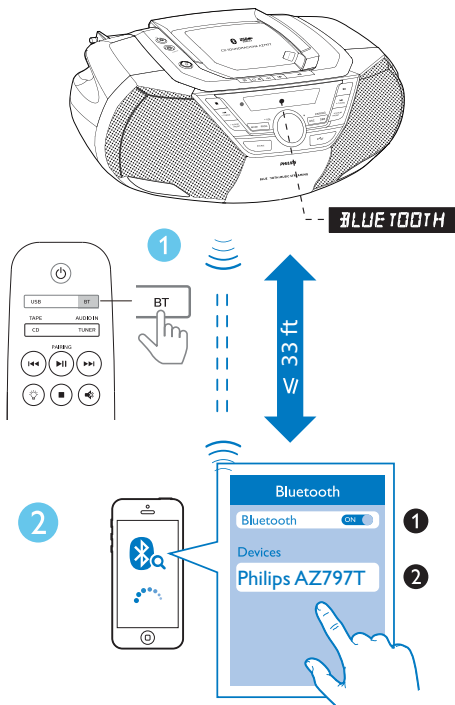
- 1 Press **USB** to select USB source.
- 2 Insert the **USB** device into the  socket.  
→ Play starts automatically. If not, press **▶II**.

### Note

- The maximum current for USB is 0.5A.

- 1 Press **BT** to select Bluetooth source.  
→ **[BLUETOOTH]** (Bluetooth) is displayed.  
→ The CD sound machine enters pairing mode, and **[PAIRING]** (Pairing) is displayed on the screen.

- 2 On your Bluetooth device, enable Bluetooth and search for Bluetooth devices (refer to the user manual of the device).
- 3 Select **[Philips AZ797T]** on your device for pairing. If necessary, enter default password "0000".
  - After successful pairing and connection, you will hear a pairing sound, and **[CONNECTED]** (connected) is displayed on the screen.



- 4 After successful Bluetooth connection, play audio on the Bluetooth device.
  - Audio streams from your Bluetooth device to the product.
  - To skip to previous/next track, press **⏮/⏭**.
  - To pause or resume the playback, press **⏸**.

### Note

- If you cannot find **[Philips AZ797T]** on your device, press **PAIRING** on the main unit or on remote control for 2 seconds to enter pairing mode, **[PAIRING]** (Pairing) is displayed on the screen.

### Disconnect the Bluetooth-enabled device

- Press and hold **PAIRING** for 2 seconds;
- Disable Bluetooth on your device; or
- Move the device beyond the communication range.

### Connect another Bluetooth-enabled device

Disable Bluetooth on the current device, and then connect another device.

### Clear Bluetooth pairing history

Press and hold **■** for 7 seconds to clear the Bluetooth pairing history.

### Play tape

### Note

- The CD sound machine will turn off automatically after an elapsed time of inactivity at tape mode.

- 1 Press **CD/TAPE** repeatedly to select **TAPE** source.
- 2 Press **■** / **▲** on the CD sound machine to open the tape door.
- 3 Load the tape with the open side upward and the full spool to the right.
- 4 Press **◀** on the CD sound machine to start play.
  - To pause/resume play, press **⏸** on main unit .

- To rewind or fast-forward, press ◀◀/▶▶ on CD sound machine.
- To stop play, press ■/▲.  
→ The CD sound machine turns off automatically.

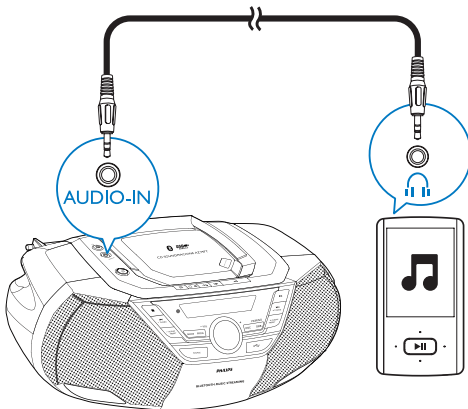
## Note

- In playback mode, cassette will be stopped automatically when playback reaches the end.
- There is no display on the LCD screen in tape mode.

## Play from an external device

You can also listen to an external audio device such as an MP3 player through this product.

- 1 Press **TUNER/AUDIO IN** repeatedly to select **[AUDIO-IN]** source.
- 2 Connect an audio cable (0.138 inch, not supplied) to:
  - the **AUDIO-IN** socket on the unit.
  - the headphone socket on an external device.
- 3 Play the external device (see the device's user manual).



# 5 Play options

## Control play

In CD or USB mode, you can control play through the following operations.

**◀◀/▶▶** Skip to the previous or next track. Press and hold to fast-forward or fast-reverse the track during playback, then release to resume play.

**▲ / ▼** Skip to the previous or next MP3 album.

**▶||** Start or pause play.

**■** Stop play.

**REPEAT** [**↻**]: Play the current track repeatedly.  
[**↻ALL**]: Play all tracks repeatedly. To return to normal play, press **REPEAT** repeatedly until the repeat icon disappears.

**SHUFFLE** [**↻**]: Play tracks randomly. To return to normal play, press **SHUFFLE** repeatedly until the shuffle icon disappears.

### Tip

- Only [**↻**] and [**↻ALL**] can be selected when you play the programmed tracks.

## Program tracks

In CD or USB mode, you can program a maximum of 20 tracks.

- 1 Press **■** to stop playback.
- 2 Press **PROG** to activate the program mode.  
→ [**PROG**] (program) begins to blink.
- 3 For MP3 tracks, press **ALBUM/PRESET +/-** to select an album.
- 4 Press **◀◀/▶▶** to select a track number, then press **PROG** to confirm.
- 5 Repeat steps 3-4 to program more tracks.
- 6 Press **▶||** to play the programmed tracks.  
→ During play, [**PROG**](program) is displayed.
  - To erase the program, press **■** twice.
  - To review the program, when playback is stopped, press and hold **PROG** for 2 seconds.

## Adjust sound

During play, you can adjust volume and select the sound effects.

Key	Function
<b>VOL +/-</b>	Increase or decrease volume.
<b>⊘</b>	Mute or resume sound.
<b>DBB</b>	Turn Dynamic Bass Boost on or off.
<b>DSC</b>	Select a preset sound effect: <b>POWERFUL</b> (powerful); <b>BALANCE</b> (balance); <b>WARM</b> (warm); <b>BRIGHT</b> (bright); and <b>CLEAR</b> (clear).

# 6 Listen to FM radio

## Tune to FM radio stations

### Note

- For optimal reception, fully extend and adjust the position of the FM antenna.

- 1 Press **TUNER/AUDIO IN** repeatedly to select FM radio source.
- 2 Press and hold **|◀◀/▶▶|** for 2 seconds.  
→ **[SEARCH]** (search) is displayed.  
→ The product tunes to a station with strong reception automatically.
- 3 Repeat step 2 to tune to more stations.

**To tune to a radio station with weak signal:**  
Press **|◀◀/▶▶|** repeatedly until you find better reception.

## Store radio stations automatically

### Note

- You can program a maximum of 30 FM radio stations.

In tuner mode, press and hold **PROG** for 2 seconds.

- **[AUTO STORE]** (auto store) is displayed.
- The unit stores all the available radio stations.
- The first stored radio station is broadcast automatically.

## Store radio stations manually

### Note

- You can program a maximum of 30 FM radio stations.

- 1 Tune to an FM radio station.
- 2 Press **PROG** to activate the storing mode.
- 3 Press **▲▼** to allocate a number (1 to 30) to this radio station, then press **PROG** to confirm.  
→ The preset number and the frequency of the preset station are displayed.
- 4 Repeat the above steps to store other stations.

### Note

- To remove a pre-stored FM radio station, store another station in its place.

## Select a preset radio station

In FM tuner mode, press **▲▼** to select a preset number.

# 7 Other features

---

## Set the sleep timer

This unit can switch to standby automatically after a preset period. When the unit is turned on, press **SLEEP** repeatedly to select the sleep timer period (in minutes).

→ When the sleep timer is activated, z<sup>2</sup> appears.


**To deactivate sleep timer:**

- Press **SLEEP** repeatedly until [**SLEEP OFF**] (sleep off) is displayed.

→ When the sleep timer is deactivated, z<sup>2</sup> disappears.


---

## Adjust the display brightness

Press  repeatedly to adjust the display brightness.

---

## Listen through the headphone

Plug a headphone into the  jack on the unit.

# 8 Product information

## Note

- Product information is subject to change without prior notice.

## Specifications

### Amplifier

Max Output Power	12 W
Frequency Response	63 -20 KHz, +/-3dB
Signal to Noise Ratio	>72 dBA
Total Harmonic Distortion	<1 %
Audio-in Input	650 mV RMS 22kohm

### Disc

LaserType	Semiconductor
Disc Diameter	4.75 inch/3.125 inch
Support Disc	CD- DA, CD-R , CD-RW, MP3-CD
Audio DAC	24Bits / 44.1kHz
Total Harmonic Distortion	<1%
Frequency Response	63 -20 KHz, +/-3dB
S/N Ratio	>72 dBA

### Tuner

Tuning Range	FM:87.5 - 108MHz
Tuning grid	100 kHz
Preset stations	30

Sensitivity:	
-Mono, 26dB S/N Ratio	<22 dBf
-Stereo, 46dB S/N Ratio	<43 dBf
Search Selectivity	<28dBf
Total Harmonic Distortion	<2%
Signal to Noise Ratio	>55 dB

### Tape Deck

Frequency Response	125 - 8000 Hz
- Normal Tape (typel)	(8 dB)
Signal-to-Noise-Ratio	
- Normal Tape (typel)	35 dBA
Wow and Flutter	≤ 0.4% DIN

### Bluetooth

Bluetooth Version	V5.0 + EDR
Range	10m (Free space)
Frequency Band/ Output Power	2.400GHz - 2.483GHz ISM Band/ ≤ 4dBm (Class 2)

### General

Power Supply	
- AC Power	120V, 60Hz
- Battery	DC 9 V, 6 x 1.5 V/ R-20/D CELL
Operation Power Consumption	15 W
Standby Power Consumption	< 0.5 W
Dimensions	
- Main Unit (W x H x D)	17.1 x 6.69 x 10.7 inch
Weight (Main Unit)	2.96 kg



---

## Supported MP3 disc formats

- ISO9660, Joliet
- Maximum title number: 512 (depending on file name length).
- Maximum album number: 255
- Supported sampling frequencies: 32 kHz, 44.1kHz, 48 kHz.
- Supported Bit-rates:32-256(kbps), variable bit rates.

---

## USB playability information

### Compatible USB devices:

- USB flash memory (USB2.0 or USB1.1)
- USB flash players (USB2.0 or USB1.1)
- Memory cards (requires an additional card reader to work with this apparatus)

### Supported formats:

- USB or memory file format FAT12, FAT16, FAT32 (sector size: 512 bytes)
- MP3 bit rate (data rate): 32-320 Kbps and variable bit rate
- Directory nesting up to a maximum of 8 levels
- Number of albums/ folders: maximum 99
- Number of tracks/titles: maximum 999
- ID3 tag v2.0 or later
- File name in Unicode UTF8 (maximum length: 128 bytes)

### Unsupported formats:

- Empty albums: An empty album is an album that does not contain MP3/WMA files, and is not be shown in the display.
- Unsupported file formats are skipped, for example, Word documents (.doc) or MP3 files with extension. dif are ignored and not played.
- WMA, AAC, WAV, PCM audio files
- DRM protected WMA files (.wav, .m4a, .m4p, .mp4, .aac)
- WMA files in lossless format

---

## Maintenance

### Clean the cabinet

- Use a soft cloth slightly moistened with a mild detergent solution. Do not use a solution containing alcohol, spirits, ammonia or abrasives.

### Clean discs

- When a disc becomes dirty, clean it with a cleaning cloth. Wipe the disc from the centre out.



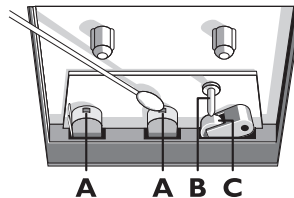
- Do not use solvents such as benzene, thinner, commercially available cleaners, or antistatic spray intended for analogue records.

### Clean the disc lens

- After prolonged use, dirt or dust may accumulate at the disc lens. To ensure good play quality, clean the disc lens with Philips CD lens cleaner or any commercially available cleaner. Follow the instructions supplied with cleaner.

### Clean the heads and the tape paths

- To ensure good recording and play quality, clean the heads **A**, the capstan(S) **B**, and pressure roller(s) **C** after every 50 hours of tape operation.
- Use a cotton swab slightly moistened with cleaning fluid or alcohol.



- You can also clean the heads by playing a cleaning tape once.

## Demagnetise the heads

- Use a demagnetising tape available at your dealer.

# 9 Troubleshooting



## Warning

- Never remove the casing of this device.

To keep the warranty valid, never try to repair the system yourself. If you encounter problems when using this device, check the following points before requesting service.

If the problem remains unsolved, go to the Philips Web page ([www.philips.com/support](http://www.philips.com/support)). When you contact Philips, make sure that the device is nearby and the model number and serial number are available.

### No power

- Ensure that the AC power plug of the unit is connected properly.
- Ensure that there is power at the AC outlet.
- Insert the batteries with their polarities (+/- signs) aligned as indicated.
- Replace the battery.

### No sound or poor sound

- Adjust the volume.

### No response from the unit

- Disconnect and reconnect the AC power plug, then turn on the system again.
- As a power-saving feature, the unit switches off automatically 15 minutes after track play reaches the end and no control is operated.

### Remote control does not work

- Before you press any function button, first select the correct source with the remote control instead of the main unit.
- Reduce the distance between the remote control and the unit.
- Insert the battery with its polarities (+/- signs) aligned as indicated.
- Replace the battery.
- Aim the remote control directly at the sensor on the front of the unit.

### USB device not supported

- The USB device is incompatible with the apparatus. Try another one.

### No disc detected

- Insert a disc.
- Check if the disc is inserted upside down.
- Wait until the moisture condensation at the lens has cleared.
- Replace or clean the disc.
- Use a finalized CD or correct format disc.

### Poor radio reception

- Increase the distance between the unit and your TV or VCR.
- Fully extend the FM antenna.

### Music playback is unavailable on this unit even after successful Bluetooth connection.

- The device cannot be used to play music through this unit wirelessly.

### The audio quality is poor after connection with a Bluetooth-enabled device.

- The Bluetooth reception is poor. Move the device closer to this unit or remove any obstacle between them.

### Bluetooth cannot be connected with this unit.

- The device does not support the profiles required for this unit.
- The Bluetooth function of the device is not enabled. Refer to the user manual of the device to find out how to enable the function.
- This unit is not in pairing mode.
- This unit is already connected with another Bluetooth-enabled device. Disconnect that device and then try again.

### The paired mobile device connects and disconnects constantly.

- The Bluetooth reception is poor. Move the device closer to this unit or remove any obstacle between them.

- Some mobile phones may connect and disconnect constantly when you make or end calls. This does not indicate any malfunction of this unit.
- For some devices, the Bluetooth connection may be deactivated automatically as a power-saving feature. This does not indicate any malfunction of this unit.

# 10 Notice

---

## Compliance

---

### FCC information

This device complies with part 15 of the FCC Rules. Operation is subject to the following two conditions:

- (1) This device may not cause harmful interference, and
- (2) This device must accept any interference received, including interference that may cause undesired operation.

**NOTE:** This equipment has been tested and found to comply with the limits for a Class B digital device, pursuant to Part 15 of the FCC Rules. These limits are designed to provide reasonable protection against harmful interference in a residential installation. This equipment generates, uses and can radiate radio frequency energy and, if not installed and used in accordance with the instructions, may cause harmful interference to radio communications.

However, there is no guarantee that interference will not occur in a particular installation. If this equipment does cause harmful interference to radio or television reception, which can be determined by turning the equipment off and on, the user is encouraged to try to correct the interference by one or more of the following measures:

- Reorient or relocate the receiving antenna.
- Increase the separation between the equipment and receiver.
- Connect the equipment into an outlet on a circuit different from that to which the receiver is connected.
- Consult the dealer or an experienced radio/TV technician for help.

## IC-Canada: CAN ICES-003(B)/NMB-003(B)

This device contains license-exempt transmitter(s)/receiver(s) that comply with Innovation, Science and Economic Development Canada's license-exempt RSS(s). Operation is subject to the following two conditions:

- (1) This device may not cause interference.
- (2) This device must accept any interference, including interference that may cause undesired operation of the device.

## FCC & IC Radiation Exposure Statement

- This equipment complies with FCC and Canada radiation exposure limits set forth for an uncontrolled environment.
- This equipment should be installed and operated with minimum distance 20cm between the radiator and your body.
- This transmitter must not be co-located or operated in conjunction with any other antenna or transmitter.

## WARNING

Changes or modifications to this unit not expressly approved by the party responsible for compliance could void the user's authority to operate the equipment.

## Trademark notice



Be responsible  
Respect copyrights

The making of unauthorized copies of copy-protected material, including computer programs, files, broadcasts and sound recordings, may be an infringement of copyrights and constitute a criminal offence. This equipment should not be used for such purposes.



The Bluetooth® word mark and logos are registered trademarks owned by Bluetooth SIG, Inc. and any use of such marks by MMD Hong Kong Holding Limited is under license. Other trademarks and trade names are those of their respective owners.

This apparatus includes these labels:



Class II equipment symbol



This symbol indicates that the apparatus has a double insulation system.



The USB-IF Logos are trademarks of Universal Serial Bus Implementers Forum, Inc.



### Note

- The type plate is located on the bottom of the apparatus.



2022 © MMD Hong Kong Holding Limited. All rights reserved. Specifications are subject to change without notice. Philips and the Philips Shield Emblem are registered trademarks of Koninklijke Philips N.V. and are used under license. This product has been manufactured by and is sold under the responsibility of MMD Hong Kong Holding Limited or one of its affiliates, and MMD Hong Kong Holding Limited is the warrantor in relation to this product.

