

# Quick start guide



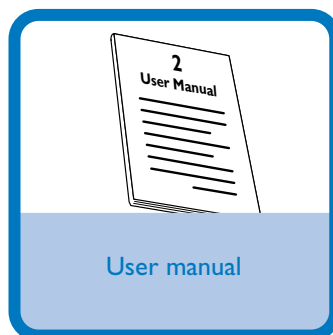
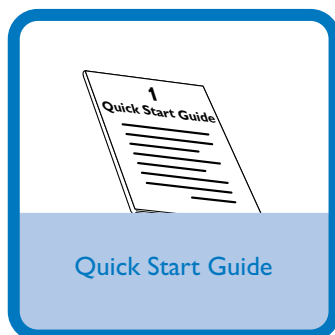
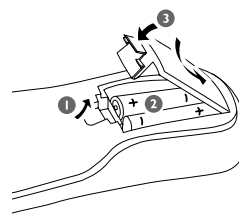
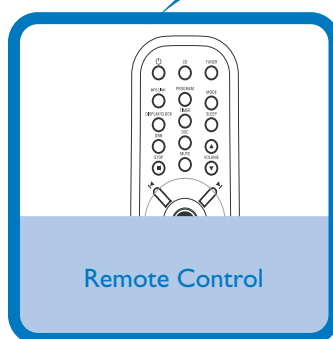
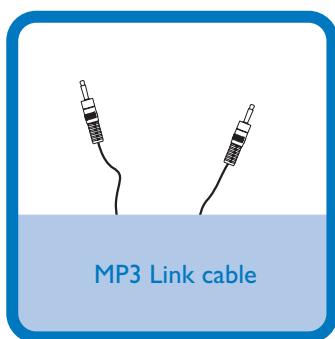
Step A *Connect*

Step B *Setup*

Step C *Enjoy*

## What's in the Box?

You should find these items upon opening the box.

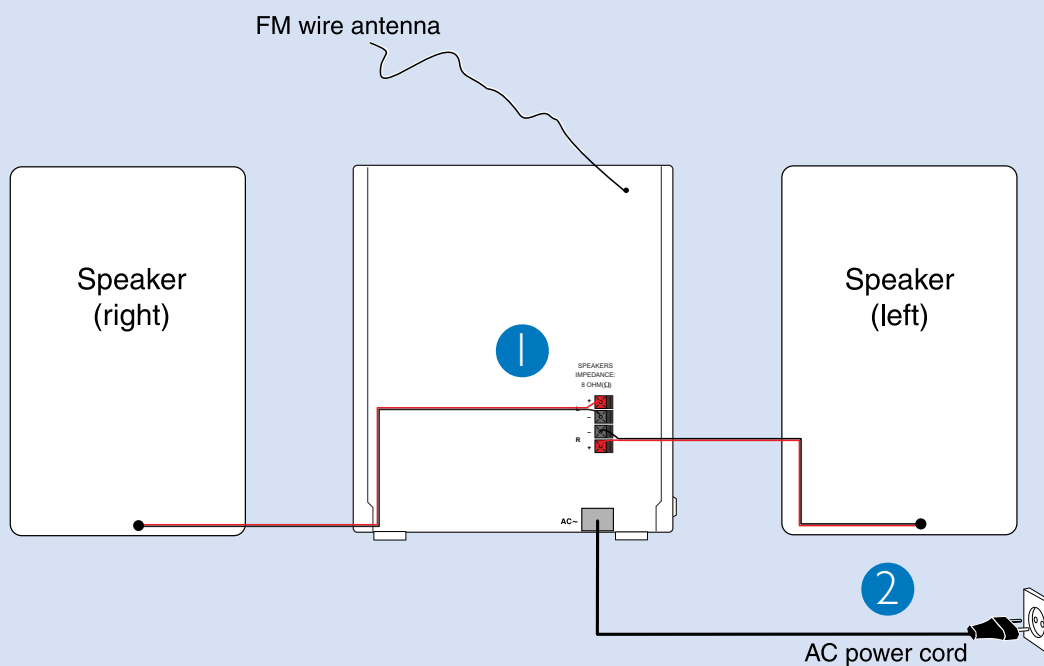


**PHILIPS**

## Step A *Connect*

- 1 Connect the speaker cables.
- 2 Connect the power cable of the system.

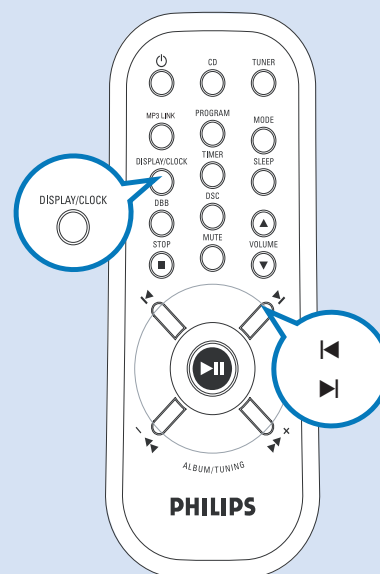
**Tip**  
See the User Manual for how to connect other equipment to this system.



## Step B *Setup*

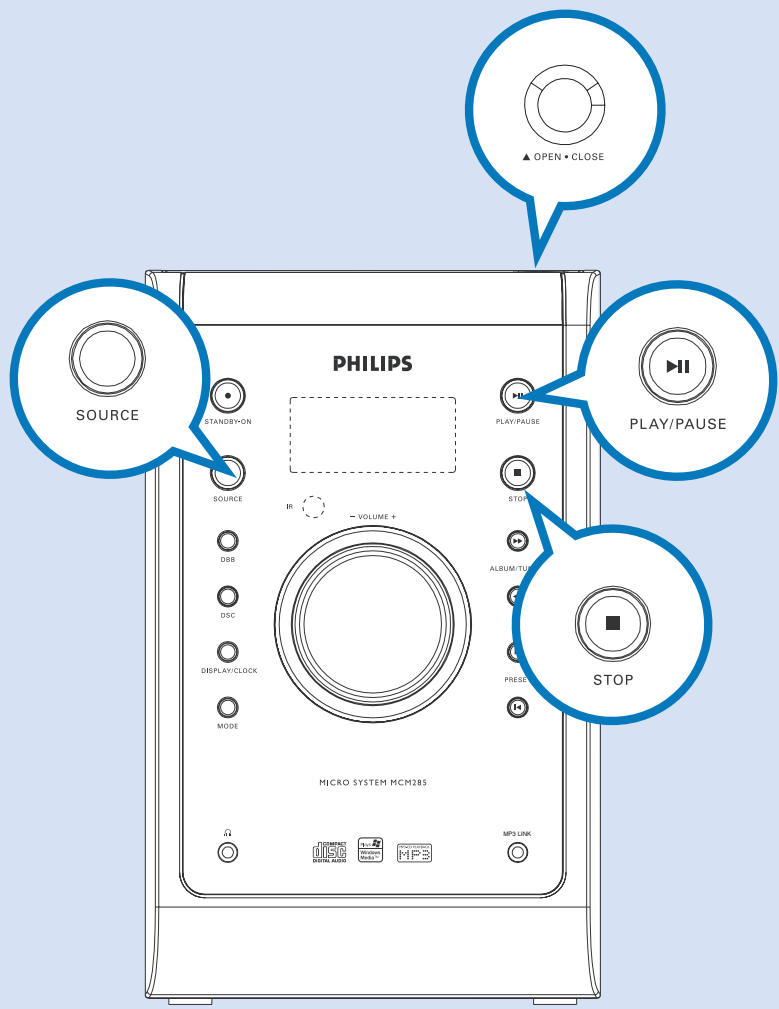
### Setting the clock

- 1 In standby mode, press and hold **DISPLAY/CLOCK**. The clock digits for the hours flash.
- 2 Press **PRESET +/-** (◀/▶) (◀/▶ on the remote) to set the hours.
- 3 Press **DISPLAY/CLOCK** again. The clock digits for the minutes flash.
- 4 Press **PRESET +/-** (◀/▶) (◀/▶ on the remote) to set the minutes.
- 5 Press **DISPLAY/CLOCK** to confirm the time.




## Playing a disc

- 1 Press **SOURCE** once or more to select **CD**.
- 2 Press **OPEN/CLOSE** on the system to open the CD compartment.
- 3 Insert a disc with the printed side facing up and press **OPEN/CLOSE** to close the CD door.
- 4 Press **▶||** to start playback.
- 5 Press **■** to stop playback.



## Programming and tuning to radio stations

- 1 Press **SOURCE** or **TUNER** once or more to select the desired waveband :  
FM or MW.
- 2 Press **PROGRAM** on the remote control for more than two seconds to  
program all available stations.
- 3 Press **PRESET +/-**  until the desired preset station is displayed.

### Tip

*Detailed playback features and additional functions are described in the  
accompany owner's manual.*



© Royal Philips Electronics N.V. 2008  
All rights reserved.

<http://www.philips.com>

