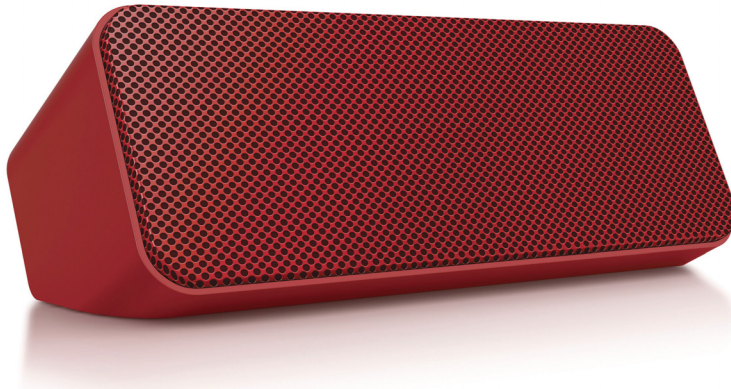


Philips
Wireless speaker

Bluetooth

SBT300RED



Loud, dynamic sound

Wireless music streaming

Powerful sound supported by wireless music streaming via Bluetooth. Bass Reflex speakers deliver a powerful, deeper bass. And versatile AC power with AA battery options ensure easy playback anywhere. A speaker to complement your lifestyle.

Impressive sound

- Wireless music streaming via Bluetooth
- Advanced audio sound performance in a compact design
- Bass Reflex speakers deliver a powerful, deeper bass

Easy and convenient

- Versatile AC power with AA battery options
- 3.5mm Aux-in port for connection with other music devices

Simplicity in use

- Works with any Bluetooth-enabled device
- Ideal for any smartphone, computer or portable device

PHILIPS

Specifications

Compatibility

- works with: most Bluetooth smartphones, tablets, music devices
- iPad: iPad 1, iPad 2, iPad mini, iPad with Retina display, new iPad
- iPhone: iPhone 3, iPhone 3GS, iPhone 4, iPhone 4S, iPhone 5
- iPod touch: 3rd generation or later
- Android tablets & smartphones: with Android 2.1 and Bluetooth 2.1 or above
- other music devices: with Bluetooth 2.1 or above

Connectivity

- Bluetooth profiles: A2DP, AVRCP, HFP, HSP
- Bluetooth range: Line of sight, 10M or 30FT
- Audio Connections: 3.5mm Line in

Sound

- Sound Enhancement: Dynamic Bass Boost
- Output power (RMS): 4W
- Sound System: Stereo
- Speakers: 2.75"

Power

- Battery type: AA
- Number of batteries: 4
- Operating time on battery: 5 hr
- Mains power: 110 - 220V

Accessories

- A cable for: 3.5mm line-in and AC/DC adaptor
- Warranty certificate
- World Wide Warranty leaflet
- Quick start guide

Packaging dimensions

- UPC: 6 09585 23846 6
- Packaging dimensions (W x H x D): 35.1 x 17 x 16.5 cm
- Packaging dimensions (W x H x D): 13.8 x 6.7 x 6.5 inch
- Gross weight: 1.69 kg
- Gross weight: 3.726 lb
- Nett weight: 1.32 kg
- Nett weight: 2.910 lb
- Number of products included: 1
- Packaging type: Carton
- Tare weight: 0.37 kg
- Tare weight: 0.816 lb
- Type of shelf placement: Laying

Outer Carton

- Gross weight: 8.333 lb
- Gross weight: 3.78 kg
- GTIN: 1 06 09585 23846 3
- Outer carton (L x W x H): 36.2 x 17.6 x 35 cm
- Outer carton (L x W x H): 14.3 x 6.9 x 13.8 inch
- Nett weight: 5.820 lb
- Nett weight: 2.64 kg
- Number of consumer packagings: 2
- Tare weight: 2.513 lb
- Tare weight: 1.14 kg

Product dimensions

- Product dimensions (W x H x D): 11.8 x 4.6 x 6.1 inch
- Product dimensions (W x H x D): 30 x 11.6 x 15.6 cm
- Weight: 1.2 kg
- Weight: 2.646 lb



Issue date 2013-12-08

Version: 2.1.4

12 NC: 8670 001 08758
UPC: 6 09585 23846 6

© 2013 Koninklijke Philips N.V.
All Rights reserved.

Specifications are subject to change without notice.
Trademarks are the property of Koninklijke Philips N.V.
or their respective owners.

www.philips.com