

Always there to help you

Register your product and get support at
www.philips.com/welcome



SBM110BLE



User manual

PHILIPS

Contents

1	Important	2
	Notice	2

2	Your Portable Speaker	4
	Introduction	4
	What's in the box	4
	Overview of the speaker	5

3	Get started	6
	Power supply	6
	Turn on/off	6
	Select a source	6

4	Play	7
	Play from Micro SD card	7
	Play from an external device	7

5	Product information	8
	Specifications	8

6	Troubleshooting	9
----------	------------------------	----------

1 Important

Read these instructions.

- Heed all warnings.
- Follow all instructions.
- Do not use this apparatus near water.
- Do not install near any heat sources such as radiators, heat registers, stoves, or other apparatus (including amplifiers) that produce heat.
- Only use attachments/accessories specified by the manufacturer.
- Refer all servicing to qualified service personnel. Servicing is required when the apparatus has been damaged in any way, such as liquid has been spilled or objects have fallen into the apparatus, the apparatus has been exposed to rain or moisture, does not operate normally, or has been dropped.
- The battery shall not be exposed to excessive heat such as sunshine, fire or the like.
- Apparatus shall not be exposed to dripping or splashing.
- Do not place any sources of danger on the apparatus (e.g. liquid filled objects, lighted candles).



Warning

- Never remove the casing of this apparatus.
- Never place this apparatus on other electrical equipment.

Disposal of your old product and batteries

Your product is designed and manufactured with high quality materials and components, which can be recycled and reused.

Never dispose of your product with other household waste. Please inform yourself about the local rules on the separate collection of electrical and electronic products and batteries. The correct disposal of these products helps prevent potentially negative consequences on the environment and human health.

Your product contains batteries, which cannot be disposed of with normal household waste. Please inform yourself about the local rules on separate collection of batteries. The correct disposal of batteries helps prevent potentially negative consequences on the environment and human health.

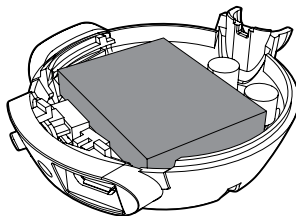
Please visit www.recycle.philips.com for additional information on a recycling center in your area.



Caution

- Removal of the built-in battery invalidates the warranty and may destroy the product.

Always bring your product to a professional to remove the built-in battery.



Environmental information

All unnecessary packaging has been omitted. We have tried to make the packaging easy to separate into three materials: cardboard (box), polystyrene foam (buffer) and polyethylene (bags, protective foam sheet.)

Notice

Any changes or modifications made to this device that are not expressly approved by WOOX Innovations may void the user's authority to operate the equipment.

Your system consists of materials which can be recycled and reused if disassembled by a specialized company. Please observe the local regulations regarding the disposal of packaging materials, exhausted batteries and old equipment.



Note

- The type plate is located on the bottom of the apparatus.

2 Your Portable Speaker

Congratulations on your purchase, and welcome to Philips! To fully benefit from the support that Philips offers, register your product at www.philips.com/welcome.

Introduction

With this speaker, you can:

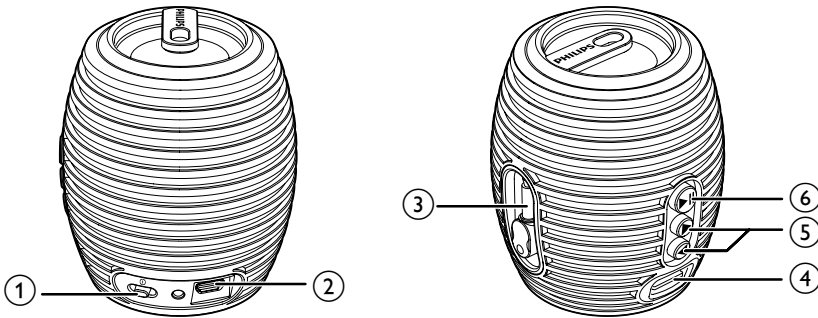
- enjoy music from Micro SD cards and other external devices.





What's in the box

Check and identify the contents of your package:

- Main unit
- USB cable X 1
- 3.5mm audio link cable X 1
- Short user manual

Overview of the speaker



- ① 
 - Turn the speaker on or off.
- ② **Charging socket**
 - Recharge the built-in battery.
- ③ **Audio input plug**
 - Connect an external audio player.
- ④ **Micro SD card slot**
 - The slot for a Micro SD card.
- ⑤  / 
 - In Micro SD card mode, skip to the previous/next audio file.
 - Press and hold to increase/decrease volume.
- ⑥ 
 - Start or pause play.
 - Switch between play modes.
 - In Micro SD card mode, press and hold for 3 seconds to turn on or off shuffle function.

3 Get started

Always follow the instructions in this chapter in sequence.

If you contact Philips, you will be asked for the model and serial number of this apparatus. The model number and serial number are on the bottom of the apparatus. Write the numbers here:

Model No. _____

Serial No. _____

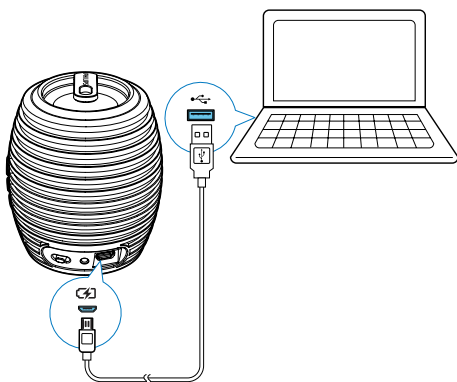
Power supply

The speaker can operate on a built-in rechargeable battery.

To recharge the built-in battery:

Connect the supplied USB cable to:

- the charging port on the speaker;
 - the USB socket of your computer.
- ↳ The LED indicator lights in red.



Note

- You can listen to music with the speaker while charging it. The LED indicator will light in white.

Turn on/off

- 1 To turn the speaker on, slide \odot to the right.
↳ The LED indicator lights in white.
- 2 To turn the speaker off, slide \odot to the left.

Select a source

Press $\blacktriangleright \parallel$ repeatedly to select between Micro SD card mode and audio in mode.

Note

- Micro SD card mode is only available when a Micro SD card is inserted into the speaker.

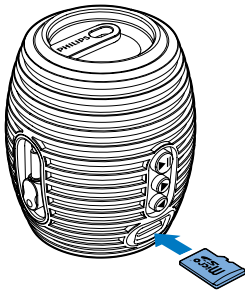
4 Play

Play from Micro SD card

Note

- The speaker only supports Micro SD cards in FAT32/16/18 format.
- The speaker can only play audio files in MP3 format.

- 1 Insert a Micro SD card into the card slot.
- 2 Slide \odot to the right to turn the speaker on.
↳ Play starts automatically.



Tip

- If the speaker is in audio in mode, insert a Micro SD card, and press **▶||** to switch to Micro SD card mode.

- To pause play and switch to audio in mode, press **▶||**.
- To enable and disable shuffle mode, press and hold **▶||**.
- To select an audio file, press **◀/▶**.
- To adjust volume, press and hold **◀/▶**.

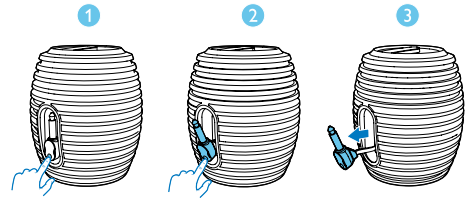
Note

- Philips does not guarantee the compatibility of all Micro SD cards with this speaker.

Play from an external device

With this speaker, you can also enjoy music from an external device.

- 1 Pull the audio input plug out of the speaker:



- 2 Slide the \odot switch to the right to turn the speaker on.
- 3 Connect the speaker to your device with the audio input plug.
- 4 Play audio on the device (see the device's user manual).
- 5 After use, disconnect your device from the speaker and slide the \odot switch to the left to turn the speaker off.

Tip

- If the speaker is in Micro SD card mode, press **▶||** to switch to the audio in mode.

5 Product information

Note

- Product information is subject to change without prior notice.

Specifications

Amplifier

Rated Output Power	2W RMS
Signal to Noise Ratio	>70dB
Distortions	<1%
Aux-in Link	300 mV RMS, 10 kohm

General information

DC power input	USB 5V 500mA
Built-in Li-Polymer battery	3.7V 500mAH
Battery working time	7 hours
Dimensions-Main Unit(diameter x height)	D65.8mm * H76.6mm
Weight- Main Unit	0.208 kg

6 Troubleshooting



Warning

- Never remove the casing of this device.

To keep the warranty valid, never try to repair the system yourself.

If you encounter problems when using this device, check the following points before requesting service. If the problem remains unsolved, go to the Philips Web page (www.philips.com/support). When you contact Philips, make sure that the device is nearby and the model number and serial number are available.

No power

- Recharge the battery.

No sound

- Adjust volume.
- Check if you have selected the correct audio source.
- If you are listening from an external audio device, adjust the volume from the external audio device.

No response from the speaker

- Make sure that the speaker has been turned on.
- Recharge the battery.
- If you are playing from a Micro SD card:
 - make sure that the Micro SD card works properly.
 - make sure that the Micro SD card is properly connected to the speaker.
 - make sure that there are MP3 files stored in the Micro SD card.
- If you are playing from an external audio device:
 - make sure that the external audio device is properly connected to the speaker.
 - adjust the volume from the external audio device.



Specifications are subject to change without notice
2013 © WOOX Innovations Limited. All rights reserved.
This product was brought to the market by WOOX
Innovations Limited or one of its affiliates, further referred
to in this document as WOOX Innovations, and is the
manufacturer of the product. WOOX Innovations is the
warrantor in relation to the product with which this booklet
was packaged. Philips and the Philips Shield Emblem are
registered trademarks of Koninklijke Philips N.V.

