

PHILIPS



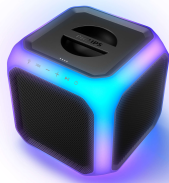
Bluetooth party speaker

360° party light

Wireless party link

Rechargeable battery

80 W RMS. 160 W max output



TAX7207

Start the party right

Set the party off with a bang with this awesome, light effect cube speaker! Powerful sound, big bass and ethereal 360° lights bathe the room with good vibes. Connect up to 50 speakers for a wall of light and sound.

Get the party started right

- Powerful sound with extra-heavy bass
- Connect easily via Bluetooth, USB or audio-in
- 2 x 2" tweeters, 6.5" bass driver and 2 x passive radiators
- 360° light bars pulse and glow to the music

Shake the room

- 80 W RMS. 160 W max output power
- AC-powered. Built-in battery for 12 hours of play time
- Connect up to 50 speakers for a wall of sound
- Cube design with comfy handle. Dimensions: 30 x 31 x 30 cm

Rock the mic

- 2 mic inputs. Karaoke effects
- Echo, female/male voice switch and vocal fader effects
- Pair for stereo and play it loud
- Touch buttons control the speaker power and volume

Highlights

Extra bass. 12 hours of play time



This karaoke cube speaker will immerse the room in rich sounds and banging bass. The built-in battery lets you move the party outside for up to 12 hours of play time on a single charge.

360° ethereal lightshow

Glowing light bars pulse through the semitransparent speaker creating a futuristic 360° light show to accompany your tunes. The lights will change colour and pulse along with your music.

2 Karaoke mic inputs

2 mic inputs allow you to kick your party into karaoke mode. Take it up a notch with echo, female/male voice switch and vocal fader voice effects. Both mics and effects have their own controls on the speaker.

Bluetooth, USB and audio-in

Connect any way you like. Stream your tunes via Bluetooth. Easily connect other devices via audio-in or USB. You can also connect to another speaker or amp using the line-out socket.

Wall of light and sound



You can connect up to 50 speakers together. A handle at the top and the cube design allow you to easily stack speakers on top of each other. Create a wall of sound with a glowing mesh of lights to get your party started right.



Specifications

Sound

Output power (RMS): 80 W
Sound enhancement: Dynamic Bass Boost
Frequency response: 40 Hz - 20 KHz, ±3 dB
Output power (MAX): 160 W
Total harmonic distortion: 10%
Speaker impedance: Treble 8 ohm; Bass 4 ohm

Loudspeakers

Driver configuration: 2-way
Number of sound channels: 2.1
Number of tweeters: 2
Number of woofers: 1
Passive radiators: 2
Tweeter diameter: 2"
Woofer diameter: 6.5"

Connectivity

Bluetooth: support SBC and AAC streaming
Bluetooth version: 5.0
Bluetooth profiles: Music streaming (A2DP), Playback/volume control: AVRCP, Multipoint (Multipair) support
Bluetooth range: Line of sight, 30 m or 100 ft
USB: Type-A (playback, reading, service)
Audio in: 1 x 3.5 mm
Mic in: 2 x (6.3 mm w/ vol control)
Audio out: 1 x 3.5 mm

DLNA Standard: No
Multiple speaker connection
Multiple speaker scenario: Stereo, Broadcasting
Multiple speaker technology: Wireless PartyLink, TWS
Smart Home: None

Supported Audio Formats

Bluetooth: SBC, AAC
USB: MP3

Convenience

Karaoke: MIC volume, echo control, vocal fader, voice changer
Light Effect: Yes, 360° speaker light effect
Touch control: Power on/off, Play/Pause, Volume up, Volume down, Lighting switch, Dynamic Bass Boost (DBB)
Display screen: No

Compatibility

Smartphone/tablet APP control: No

Power

Battery Capacity: 2600 mAh, 14.4 V
Power supply: 100-240 VAC, 50/60 Hz
Standby power consumption: ≤ 0.5 W
Battery Type: Lithium-ion (built-in)

Battery life time: 12 hour(s)
Charging time: 6.5 hour(s)
Power bank: No

Packaging dimensions

Height: 46 cm
Packaging type: Carton
Type of shelf placement: Standing
Width: 39 cm
Depth: 39 cm
Number of products included: 1
EAN: 48 95229 12631 2
Gross weight: 9.5 kg
Net weight: 7.5 kg
Tare weight: 2 kg

Product dimensions

Height: 31 cm
Width: 30 cm
Depth: 30 cm
Weight: 7.5 kg

Accessories

Included accessories: AC Power Cord, Quick start guide, Warranty certificate, Safety warranty sheet

