



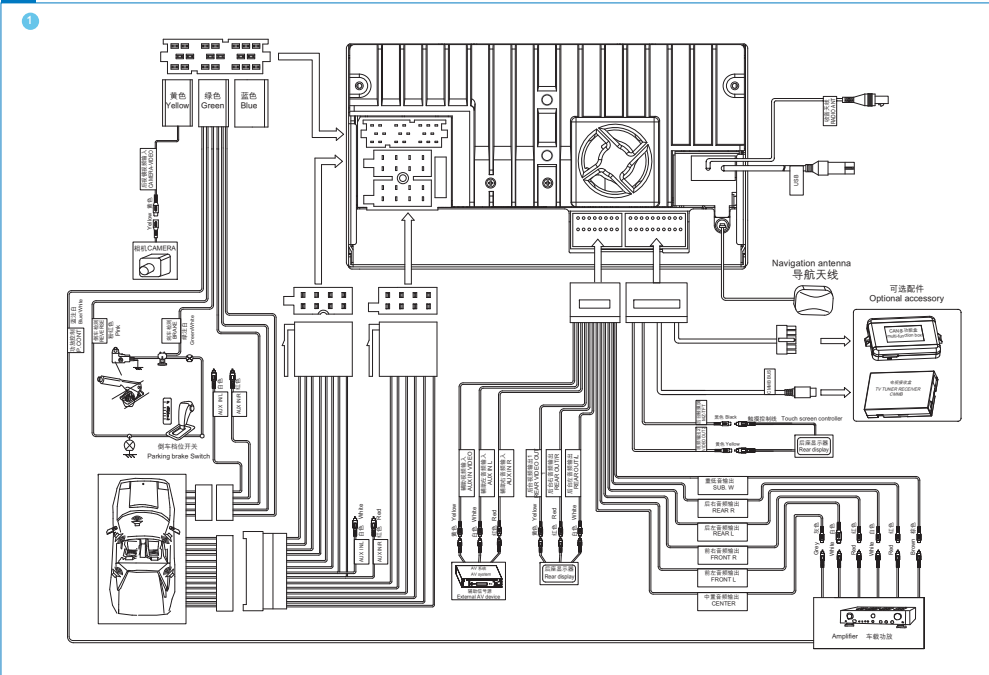
Quick Start Guide 快速使用指南

- 1** Install 安装
- 2** Enjoy 使用

PHILIPS

CID3750

1 Install 安装



Always follow the instructions in this chapter in sequence.

Install the car audio
 These instructions are for a typical installation. However, if your car has different requirements, make the corresponding adjustment. If you have any questions regarding installation kits, consult your Philips car audio dealer.

- 1 Install the supplied tracks onto the car audio with the supplied screws. ②
- 2 Remove the trim plate and slide the car audio along the guide track into the car. ③
- 3 Fix the car audio onto the dashboard with screws unloaded from the original car audio system. ④
- 4 Attach the trim plate.
- 5 Reconnect the negative terminal of the car battery.

请务必遵循本章的说明并依照顺序。

安装车载音响
 此说明适用于典型安装。但是，如果您的汽车有不同的需要，请做相应的调整。如果遇到任何关于安装套件的问题，请咨询您的 Philips 车载音响经销商。

- 1 用随附的螺钉将随附的导轨安装到车载音响上。 ②
- 2 卸下装饰板并将车载音响沿着导轨滑入汽车。 ③
- 3 用从原来的车载音响系统上取下的螺钉将车载音响固定到仪表盘。 ④
- 4 安装调整片。
- 5 重新连接汽车电池的负极。

1 Install 安装

Caution

- Use of controls or adjustments or performance of procedures other than herein may result in hazardous radiation exposure or other unsafe operation.

Caution

- This unit is designed for negative ground (earth) 12V DC operation only.
- Always install this unit in the car dashboard. Other locations can be dangerous as the rear of the unit heats up during use.
- To avoid short-circuit before you connect, ensure that the ignition is off.
- Ensure that you connect the yellow and red power supply leads after all other leads are connected.
- Ensure that all loose leads are insulated with electrical tape.
- Ensure that the leads do not get caught under screws or in moving parts (e.g. seat rail).
- Ensure that all ground (earth) leads are connected to a common ground (earth) point.
- Use only the supplied mounting hardware for a safe and secure installation.
- Improper fuses can cause damage or fire. When you need to change the fuse, consult a professional.

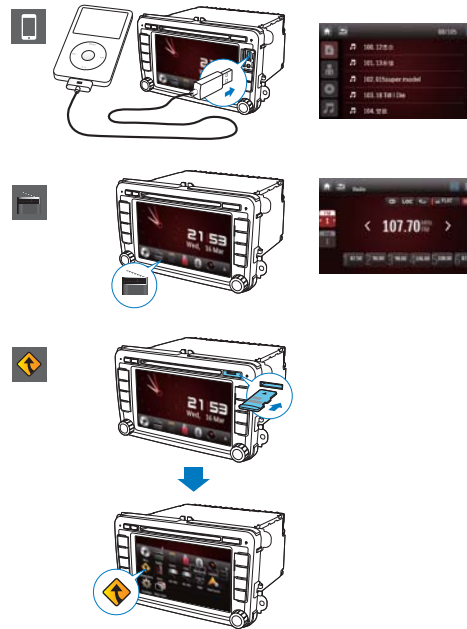
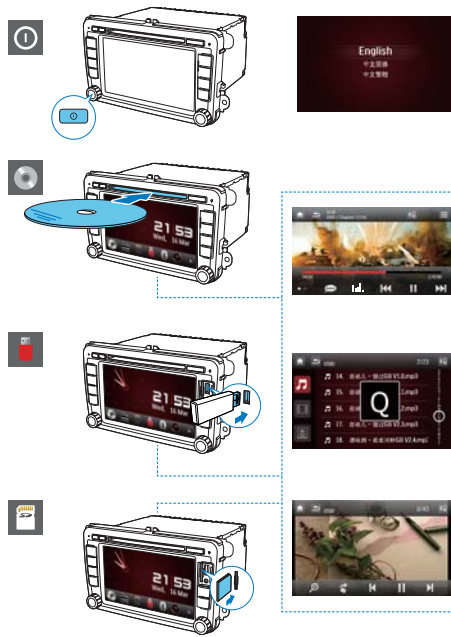
注意

- 不按此说明的操作流程来使用控件或进行调整可能导致危险的激光辐射或其它不安全的操作。

注意

- 根据设计，本装置只能在负极接地 12V 直流电压下工作。
- 避免短路：连接之前，请确保点火器处于关闭状态。
- 确保连接完所有其它导线后，再连接黄色和红色电源线。
- 确保所有松散导线均已用电气胶带隔离。
- 确保在行家可移动部件时未将导线挂住（如座椅导轨）。
- 确保将所有地线连接至同一接地点。
- 只能使用随附的安装硬件，以确保安装安全稳固。
- 使用不适当的保险丝可能会导致损坏或引起火灾。需要更换保险丝时，请咨询专业人员。

2 Enjoy 使用



Pair the Bluetooth-enabled devices

- Turn on the Bluetooth function on the device.
- Search for Bluetooth device with the device.
- Select "CID3750" in the pairing list.
- Enter default password "0000".
↳ If the pairing succeeds, the phone call record is displayed.



配对蓝牙设备

- 打开设备的蓝牙功能。
- 用本设备搜索蓝牙设备。
- 选择配对列表中的“CID3750”。
- 输入默认密码“0000”。
↳ 如果配对成功，将显示通话记录。



Make a call

- Pair the phone with the unit.
↳ Tap to display the home menu.
- Tap to display the Bluetooth menu.
- Tap .
↳ List of available Bluetooth devices is displayed.
- Tap on the name of your mobile phone.
↳ The Bluetooth menu is displayed.
- Tap or to select a phone number.
- Tap on a phone number from the list.
↳ Phone calling starts.
- When conversation ends, tap .

打电话

- 将电话与本装置配对。
- 按 显示主菜单。
- 轻击 。
↳ 将显示可用蓝牙设备的列表。
- 轻击手机的名称。
↳ 将显示蓝牙菜单。
- 轻击 、 或 以选择电话号码。
- 轻击列表中的电话号码。
↳ 电话呼叫开始。
- 通话结束时，轻击 。



© 2011 Koninklijke Philips Electronics N.V.
All rights reserved.
CID3750_00_QSG_V1.0

