

Important safety instructions

Warning

- The Electrical network is classified as hazardous. The only way to power down the charger is to unplug the power supply from the electrical outlet. Ensure that the electrical outlet is always easily accessible.
- Refer to safety information before using the product.
- Hereby, Gibson Innovations declares that this product is in compliance with the essential requirements and other relevant provisions of Directive 2014/53/EU.
- Use only the power supply listed in the user instructions.
- Do not allow the product to come into contact with liquids.
- Dispose of used batteries according to the instructions.
- The integrated battery shall not be exposed to excessive heat such as sunshine, fire or the like.
- When the handset rings or when the handsfree is activated, keep the handset away from your ear to avoid hearing damage.

1 Overview

In call

- Phonebook
- Access the redial list.
- Adjust the volume.
- Recall (network dependent).
- End calls.
- Enter a pause (press and hold).
- Turn the speaker on/off.
- Mute/unmute the microphone.

Standby

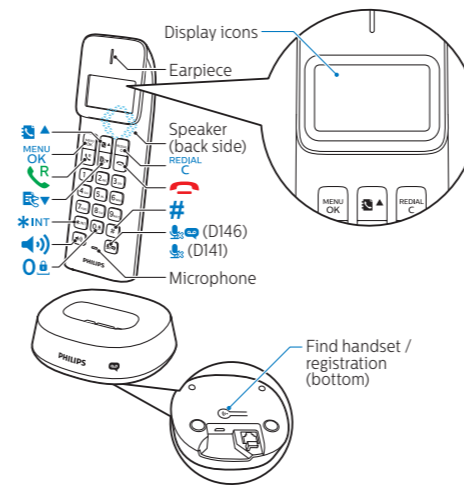
- Access the main menu.
- Access the redial list.
- Phonebook
- Call log
- Make and receive calls.
- Switch the handset on or off (press and hold).
- Make intercom call (press and hold).
- Lock/unlock the keypad (press and hold).
- Make and receive calls through the speaker.
- D146 only: Press to play new message from the answer machine. / Access to the answer machine menu.

In menu

- Confirm / Select / Enter the option menu.
- Cancel / back
- Up / down
- Exit menu.

In text input

- Delete text.
- Enter a space.

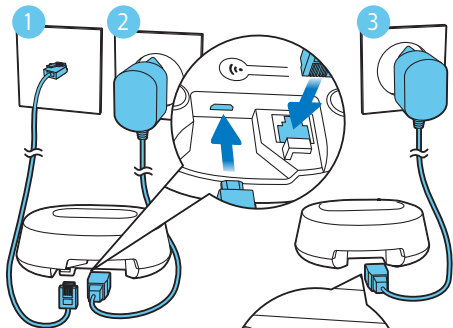


Display icons

- It shows the connection status between the handset and base station. The more bars are shown, the better the signal strength is.
- It remains steadily on when browsing incoming calls in the call log.
- It indicates an outgoing call in the redial list.
- It flashes when there is a new missed call or when browsing new missed calls. It remains steadily on when browsing the missed calls in call log that are already read.
- It flashes when receiving incoming call. It remains steadily on during a call.
- The speaker is on.

- The ringer is off.
- D146 only: Answering machine: it flashes when there is a new message or when the memory is full. It is displayed when the telephone answering machine is turned on.
- Voice messages indicator: flashes for new messages, is steady for reviewed messages. * This is network dependent.
- It is displayed when you scroll up/down a list or increase and decrease the volume.
- There are more digits on the right. Press REDIAL to read.

2 Connect

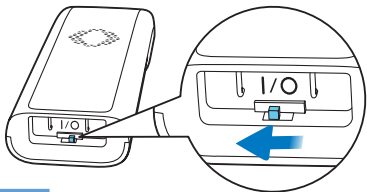


The base station allows connection to a power bank as an alternative source of power during AC power outage.

Multi-handset version only.

3 Get started

Switch on your phone



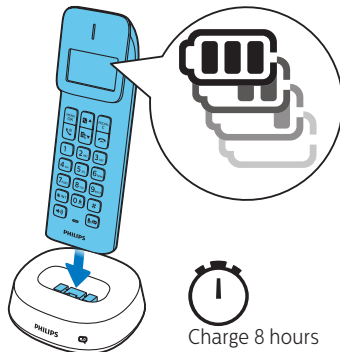
Note

The batteries will not charge if the handset switch is not turned on.

Configure your phone

- 1 When using your phone for the first time, you see a welcome message (country dependent).
- 2 Set the country and language if prompted.


Charge your phone



 > 70%

 40% - 70%

 10% - 40%

 Flashing: low battery

 Scrolling: charging in progress

4 Enjoy

Phonebook

Add record

- 1 Press .
- 2 Select **[PHONEBOOK]** > **[ADD NEW]**.
- 3 Follow on-screen instructions.

Call from the phonebook

- 1 Press .
- 2 Select a record and press .

Call log

Call from the call log

- 1 Press .
- 2 Select a record and press .

View record

Press > > **[VIEW]**.

Save record

- 1 Press .
- 2 Select a record and press > **[SAVE NUMBER]**.
- 3 Follow on-screen instructions.

Delete record

- 1 Press > > **[DELETE]**.
- 2 Follow on-screen instructions.

Redial list

Call from the redial list

- 1 Press .
- 2 Select a record and press .

Save record

- 1 Press .
- 2 Select a record and press > **[SAVE NUMBER]**.
- 3 Follow on-screen instructions.

Delete record

- 1 Press > > **[DELETE]**.
- 2 Follow on-screen instructions.

Telephone answering machine (for D146 only)

Turn the answering machine on or off

- 1 Press > **[ANSW MACHINE]** > **[ON/OFF]**.
- 2 Follow on-screen instructions.
 - **[ON]** > **[ANSWER ONLY]** means the answering machine is on. Calls are only answered, messages are not recorded.
 - **[ON]** > **[RECORD ALSO]** means the answering machine is on. Calls are answered and messages are recorded.

Listen to the incoming messages

Press > **[ANSW MACHINE]** > **[PLAY]**.

Delete an incoming message

- 1 When you listen to the message, press to enter the options menu.
- 2 Select **[DELETE]**, then press to confirm.

Register the handset or additional handsets

You can register additional handsets to the base station.

- 1 Press and hold on the base station for 10 seconds.
- 2 Press .
- 3 Select **[SERVICES]** > **[REGISTER]**, then press to confirm.
- 4 Enter the system PIN/passcode (0000).

- 5 Press to confirm the PIN/passcode.
 - ↳ Registration is complete in less than 2 minutes.

Note

- The preset PIN is 0000.
- The handset and the base station are GAP compliant, which means they guarantee the minimum functions: register a handset, take the line, make a call and receive a call. The advanced features may not be available if you use them with other makes. To register the handset to another GAP-compliant base station, follow the registration procedure of that base station.

Restore default settings

You can reset your phone settings to the original factory settings, and recall the original PIN/passcode.

- 1 Press .
- 2 Select **[SERVICES]** > **[RESET]**, then press to confirm.
- 3 Follow on-screen instructions.

Technical data



Battery

Rechargeable Ni-MH 2.4V 300mAh
non-removable batteries

Adapter (base and charger)

	Input:	Output:
SPPS:	100-240 V~	5 Vdc
SSY050050-UK	50/60 Hz 200 mA	500 mA

Alternative power source

Power bank: output: 5 Vdc 500 mA (minimum)

Phonebook with 50 entries

Call log with 20 entries

Talk time: 10 hours

Standby time: 200 hours

RF output power: < 24 dBm

Frequency band: 1880 MHz ~ 1900 MHz



Note

- You can find the Declaration of Conformity on www.p4c.philips.com.

? Frequently asked questions

My handset displays [SEARCHING] or [UNAVAILABLE], or [UNREGISTERED], what do I do?

- Make sure that the base station has power supply.
- The handset is out of range. Move it closer to the base station.
- The handset is not paired with the base. Register the handset to the base station.

If I fail to pair (register) the additional handsets to the base station, what do I do?

- Your base memory is full. Access ^{MENU} **[SERVICES]** > **[UNREGISTER]** to unregister the unused handsets and try again.
- If registration fails, unplug the power adapter from the base station and plug it back. Wait for 15 seconds, and then repeat the registration procedure.

My handset is in searching or unavailable status, what do I do?

- Make sure that the base station has power supply.
- Register the handset to the base station.
- Move the handset closer to the base station.

No display

- Make sure the batteries are charged.
- Make sure there are power and phone connections.

The battery discharges too fast.

- The battery is not fully recharged. Leave the handset on the charging cradle for at least 8 hours or until the battery icon on the handset stops scrolling and indicates full bar.

Bad audio (crackles, echo, etc.)

- The handset is nearly out of range. Move it closer to the base station.
- The phone receives interference from the nearby electrical appliances. Move the base station away from them.
- The phone is at a location with thick walls. Move the base away from them.
- The phone receives interference from the DSL (digital subscriber line) connection. Install a DSL filter to prevent the noise. Contact your service provider for the DSL filter.

The handset does not ring.

Make sure the handset ringtone is turned on..

The caller ID does not display.

- The service is not activated. Check with your service provider.
- The caller's information is withheld or unavailable.



www.philips.com/support

To access the user instructions online, use the reference model number written on the product label at the bottom of the base station.



This symbol on a product means that the product is covered by European Directive 2012/19/EU.

This product has been manufactured by, and is sold under the responsibility of Gibson Innovations Ltd., and Gibson Innovations Ltd. is the warrantor in relation to this product.

Philips and the Philips Shield Emblem are registered trademarks of Koninklijke Philips N.V. and are used under license from Koninklijke Philips N.V.



UMS_D141-146
90_EN_V1.0
WK17191