

Always there to help you

Register your product and get support at
www.philips.com/support

BTD5210



User manual

PHILIPS

Contents

1 Important	2
Safety	2

2 Your micro system	3
Introduction	3
What's in the box	3
Overview of the main unit	4
Overview of the remote control	5

3 Connect	7
Place the unit	7
Connect speakers	7
Connect FM antenna	7
Connect video/audio cables	8
Connect an external audio device	8
Connect power	9

4 Get started	10
Prepare the remote control	10
Set clock	10
Activate demonstration mode	10
Turn on	11
Find the correct viewing channel	11
Select the correct TV system	11
Change system menu language	11

5 Play	12
Play from disc	12
Play from USB or recored discs	13
Play a slideshow with background music	13
Resume video play from last stopped point	13
Control play	14
Play options	14
Change the audio channel	14

6 Enjoy karaoke	15
Adjust Karaoke settings	15

7 Listen to the radio	16
Tune to a radio station	16
Program radio stations automatically	16
Program radio stations manually	16
Select a preset radio station	16

8 Play from Bluetooth-enabled devices	17
--	----

9 Other features	18
Set the alarm timer	18
Set the sleep timer	18
Listen to an external device	18

10 Adjust settings	19
General setup	19
Video setup	19
Audio setup	20
Preferences	20

11 Product information	22
Specifications	22
Supported disc formats	23
USB playability information	23

12 Troubleshooting	24
---------------------------	----

13 Notice	26
Declaration of conformity	26

1 Important

Safety

- Make sure that there is enough free space around the product for ventilation.
- Only use attachments or accessories specified by the manufacturer.
- Battery usage CAUTION – To prevent battery leakage which may result in bodily injury, property damage, or damage to the product:
 - Install the battery correctly, + and - as marked on the product.
 - Remove the battery when the product is not used for a long time.
 - The battery shall not be exposed to excessive heat such as sunshine, fire or the like.
- The product shall not be exposed to dripping or splashing.
- Do not place any sources of danger on the product (e.g. liquid filled objects, lighted candles).
- Where the plug of the Direct Plug-in Adapter is used as the disconnect device, the disconnect device shall remain readily operable.



Warning

- Never remove the casing of this device.
- Never lubricate any part of this device.
- Never place this device on other electrical equipment.
- Keep this device away from direct sunlight, naked flames or heat.
- Never look into the laser beam inside this device.
- Ensure that you always have easy access to the power cord, plug, or adaptor to disconnect this device from the power.

2 Your micro system

Congratulations on your purchase, and welcome to Philips! To fully benefit from the support that Philips offers, register your product at www.philips.com/welcome.

Introduction

With this unit, you can:

- Watch video from DVD/VCD/SVCD, or USB storage devices;
- enjoy audio from discs, Bluetooth-enabled devices, USB storage devices, or other external devices;
- enjoy Karaoke by connecting a microphone.
- view pictures from discs or USB storage devices;
- listen to FM radio stations.

You can enrich sound output with below sound effect:

- Digital Sound Control (DSC)
 - DSC 1: Balanced
 - DSC 2: Clear
 - DSC 3: Powerful
 - DSC 4: Warm
 - DSC 5: Bright

The unit supports these media formats:



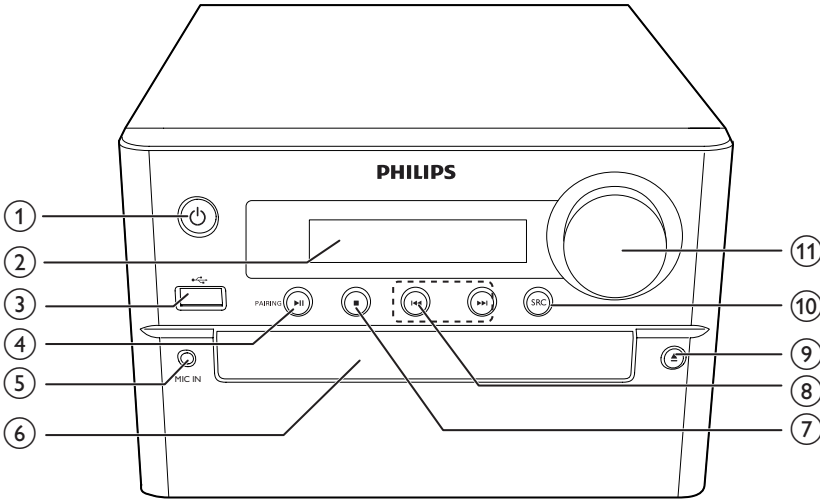
DVD region code	Countries
	Europe

What's in the box

Check and identify the contents of your package:

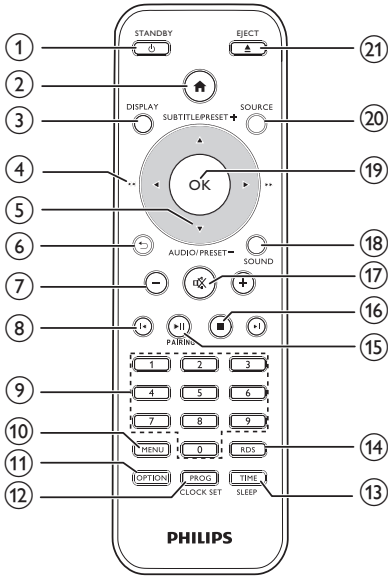
- Main unit
- 2 x speakers
- 1 x power cord
- 1 x composite video cable (yellow)
- 1 x FM antenna
- Remote control (with two AAA batteries)
- Short User Manual
- Safety&Notice Sheet

Overview of the main unit



- ① **⏻**
- Turn the unit on or off.
 - Switch to standby mode or Eco standby mode.
- ② **Display panel**
- Show the current status.
- ③ **🔌**
- Socket for a USB storage device.
- ④ **▶||/PAIRING**
- Start, pause, or resume play.
 - In the Bluetooth source, press and hold to enter pairing mode.
- ⑤ **MIC IN**
- Connect a microphone.
- ⑥ **Disc compartment**
- ⑦ **■**
- Stop play.
 - Erase a programmed radio station.
 - Activate/deactivate demonstration mode.
- ⑧ **◀◀/▶▶**
- Skip to the previous/next track, title or chapter.
 - (Press and hold) Fast backward/forward within a track/disc/USB.
 - Tune to a radio station.
 - (Press and hold) search for radio stations automatically.
- ⑨ **▲**
- Open/close the disc compartment.
- ⑩ **SRC**
- Select a source: DISC, USB, FM, AUX IN, BT.
- ⑪ **VOLUME**
- Adjust volume.
 - Adjust time during alarm/sleep timer setting.

Overview of the remote control



1 **⏻/STANDBY**

- Turn the unit on or off.
- Switch to standby mode or Eco standby mode.

2 **🏠**

- Access the system menu.

3 **DISPLAY**

- View playback information.

4 **⏪ / ⏩ (⏮ / ⏭)**

- Navigate through the menu.
- Search within a track/disc/USB.
- Tune to a radio station.

5 **SUBTITLE/PRESET + (▲) / AUDIO/PRESET - (▼)**

- Navigate through the menu.
- Skip to the previous/next album.
- **SUBTITLE (▲)**: Select a preset radio station.
- **AUDIO (▼)**: Set the subtitle language.
- Set time.

6 **↶**

- Return to the previous display menu.

7 **+/-**

- Adjust volume.

8 **⏮ / ⏭**

- Skip to the previous or next title, chapter, track, or file.

9 **Numeric buttons**

- Select a title/chapter/track to play.
- Select a preset number.

10 **MENU**

- Access DISC/USB/iPod/iPhone/iPad menu.

11 **OPTION**

- In DISC/USB play mode, press to select preferred play options.

12 **PROG/CLOCK SET**

- Program radio stations.
- Set the clock.
- View clock information.

13 **TIME/SLEEP**

- Set the alarm timer.
- Set the sleep timer.

14 **RDS**

- For selected FM radio stations, display information of Radio Data System (RDS).

15 **⏸ / PAIRING**

- Start, pause, or resume play.
- In the Bluetooth source, press and hold to enter pairing mode.

16 **■**

- Stop play.

17 **🔇**

- Mute or restore volume.

18 **SOUND**

- Enrich sound effect with Digital Sound Control (DSC).

19 **OK**

- Confirm a selection.

⑳ SOURCE

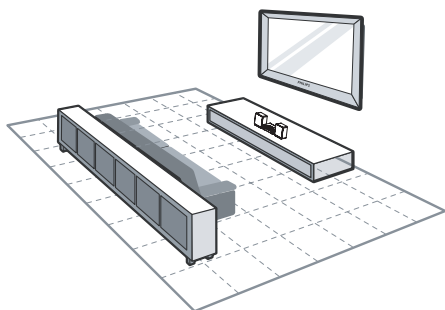
- Select a source: dock, BT (Bluetooth), DISC, USB, FM, AUX.

㉑ EJECT ▲

- Press to open or close the disc compartment.

3 Connect

Place the unit



- 1 Place the unit near the TV.
- 2 Place the left and right speakers at equal distance from the TV and at an angle of approximately 45 degrees from the listening position.

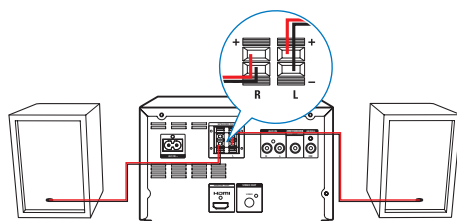
Note

- To avoid magnetic interference or unwanted noise, never place this apparatus and speakers too close to any radiation devices.
- Place this unit on top of a table.
- Never place this unit in an enclosed cabinet.
- Install this unit near the AC outlet where the AC power plug can be easily reached.

Connect speakers

Note

- For optimal sound, use the supplied speakers only.
- Connect only speakers with impedance that is the same or higher than the supplied speakers. Refer to the Specifications section of this manual.

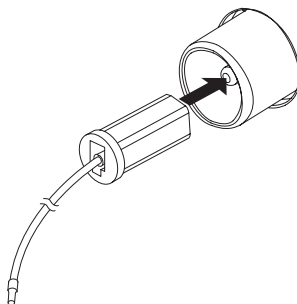


- 1 Hold down the socket flap.
- 2 Insert the stripped part of the wire completely.
 - Insert the right speaker wires to "R", left speaker wires to "L".
 - Insert the red wires to "+", black wires to "-".
- 3 Release the socket flap.

Connect FM antenna

Tip

- For optimal reception, fully extend and adjust the position of the antenna.
 - For better FM stereo reception, connect an outdoor FM antenna to the **FM AERIAL** socket.
 - The device does not support MW radio reception.
-
- Connect the supplied FM antenna to the **FM AERIAL** socket on the back of the device.

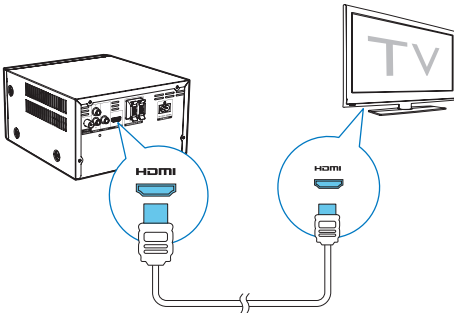


Connect video/audio cables

Select the best video connection that the TV can support.

- **Option 1:** Connect to the HDMI socket (for an HDMI, DVI or HDCP-compliant TV).
- **Option 2:** Connect to the composite video socket (for a standard TV).

Option 1: Connect to the HDMI socket

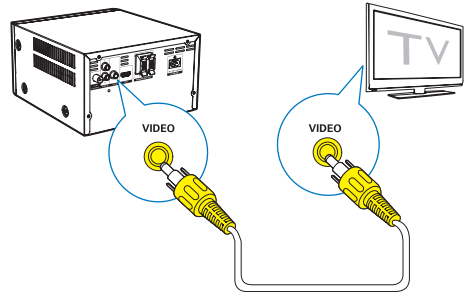


- Connect an HDMI cable (not supplied) to:
 - the **HDMI (DIGITAL OUT)** socket on this unit.
 - the HDMI input socket on the TV.

Tip

- If the TV has a DVI connector only, connect via an HDMI/DVI adaptor. Connect an audio cable for sound output.
- If this unit connects to a TV compatible with 1080p or 1080p/24Hz, Philips recommends HDMI category 2 cable, also known as High Speed HDMI cable, for optimal video and audio output.
- This type of connection provides the best picture quality.

Option 2: Connect to the composite video socket



- Connect a composite video cable to:
 - the **VIDEO (VIDEO OUT)** jack on this unit.
 - the VIDEO input socket on the TV.

Tip

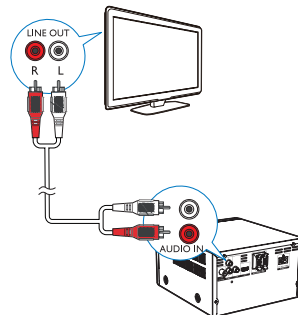
- The video input jack on the TV might be labeled as A/V IN, VIDEO IN, COMPOSITE or BASEBAND.

Connect an external audio device

You can route audio from an external audio device to this unit.

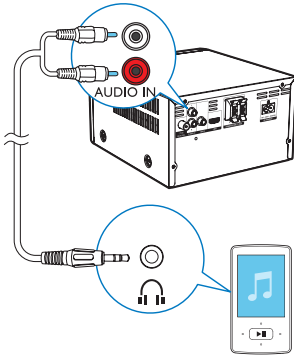
If the external audio device has analog audio output sockets (such as your TV):

- Connect audio cables (red/white - not supplied) to:
 - the **AUDIO-IN(L and R)** sockets on the back of the unit.
 - the audio output sockets on the external audio device.



If the external audio device has a 3.5mm audio output socket:

- Connect a red/white-to-3.5mm audio cable (not supplied) to:
 - the **AUDIO-IN (L and R)** sockets on the back of the unit.
 - the headphone socket on the external audio player.

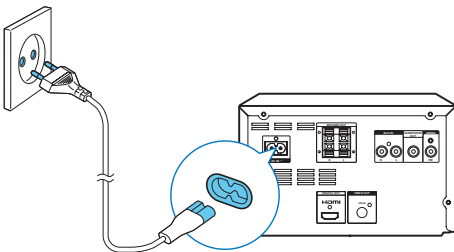


Connect power



Caution

- Risk of product damage! Ensure that the power supply voltage corresponds to the voltage printed on the back or the underside of the unit.
- Risk of electric shock! When you unplug the AC power cord, always pull the plug from the socket. Never pull the cord.
- Before you connect the AC power cord, make sure that you have completed all other connections.



- Connect the AC power cord to
 - the **AC IN ~** socket on this unit.
 - the wall power socket.

4 Get started

! Caution

- Use of controls or adjustments or performance of procedures other than herein may result in hazardous laser exposure or other unsafe operation.

Always follow the instructions in this chapter in sequence.

If you contact Philips, you will be asked for the model and serial number of this apparatus. The model number and serial number are on the back of the apparatus. Write the numbers here:

Model No. _____

Serial No. _____

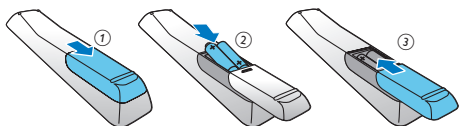
Prepare the remote control

! Caution

- Risk of explosion! Keep batteries away from heat, sunshine or fire. Never discard batteries in fire.
- Risk of decreased battery life! Never mix different brands or types of batteries.
- Risk of product damage! When the remote control is not used for long periods, remove the batteries.

To insert the remote control battery:

- 1 Open the battery compartment.
- 2 Insert the supplied AAA batteries with correct polarity (+/-) as indicated.
- 3 Close the battery compartment.



Set clock

- 1 In standby mode, press and hold **PROG/CLOCK SET** on the remote control for more than two seconds.
↳ [24H] or [12H] hour format is displayed.
- 2 Press **▲ / ▼** (or **VOL -/VOL +**) to select [24H] or [12H] hour format, and then press **PROG/CLOCK SET**.
↳ The hour digits are displayed and begin to blink.
- 3 Press **▲ / ▼** (or **VOL -/VOL +**) to set hour, and then press **PROG/CLOCK SET**.
↳ The minute digits are displayed and begin to blink.
- 4 Repeat step 3 to set minute.

☰ Note

- If no button is pressed in 90 seconds, the system exits clock setting mode automatically.

✱ Tip

- In Eco power mode, you can press **PROG/CLOCK SET** to view the clock information.

Activate demonstration mode

In this mode, you can see an overview of all features.

- In standby mode, press and hold **■** on the main unit to activate demonstration mode.
↳ A demonstration of major available features starts.

To deactivate the demonstration mode:

- Press **■** on the main unit again.

Turn on

- Press **⏻**.
 - ↳ The device switches to the last selected source.

Switch to standby mode

- Press **⏻** again to switch the unit to standby mode.
 - ↳ The clock (if set) is displayed on the panel.

To switch to ECO standby mode:

- Press and hold **⏻** for more than two seconds.
 - ↳ The display panel is dimmed.



Note

- The unit switches to Eco Power Standby mode after 15 minutes in standby mode.

To switch between standby mode and ECO standby mode:

- Press and hold **⏻** for more than two seconds.

Find the correct viewing channel

- 1 Press **DISC** to switch to disc mode.
- 2 Turn on the TV and switch to the correct video-in channel in one of the following ways:
 - Go to the lowest channel on your TV, and then press the Channel Down button until you see the blue screen.
 - Press the source button repeatedly on the remote control of your TV.



Tip

- The video-in channel is between the lowest and highest channels and may be called FRONT, A/V IN, VIDEO etc. See the TV user manual on how to select the correct input on the TV.

Select the correct TV system

Change this setting if the video is not displayed correctly. By default, this setting matches the most common setting for TVs in your country.

- 1 Press **⬆**.
- 2 Select **[Setup]** (Setup) -> **[Video]** (Video) -> **[TV System]** (TV System).
- 3 Select a setting and press **OK**.
 - **[PAL]** (PAL) - For TV with PAL color system.
 - **[Multi]** (Multi) - For TV that is compatible with both PAL and NTSC.
 - **[NTSC]** (NTSC) - For TV with NTSC color system.
- 4 To return to the previous menu, press **⬅**.
- 5 To exit the menu, press **⬆**.

Change system menu language

- 1 Press **⬆**.
- 2 Select **[Setup]** (Setup) -> **[General]** (General) -> **[OSD Language]** (OSD Language), and press **OK**.
- 3 Select a setting and then press **OK**.
- 4 To exit the menu, press **⬆**.

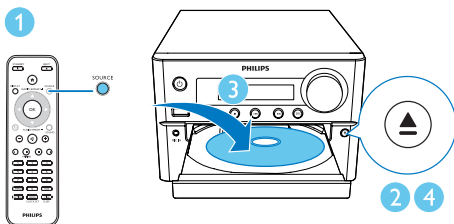
5 Play

Play from disc

! Caution

- Risk of product damage! Never play discs with accessories such as disc stabilizer rings or disc treatment sheets.
- Never put any objects other than discs into the disc compartment.

- 1 Press **SOURCE** repeatedly to select the disc source.
- 2 Press **▲** to open the disc compartment.
- 3 Insert a disc with the printed side facing upward.
- 4 Press **▲** to close the disc compartment.
↳ Play starts automatically.



If play does not start automatically:

- Select a title/chapter/track and then press **▶II**.

* Tip

- To play a locked DVD, enter the 6-digit parental control password (000000).

Use the disc menu

When you load a DVD/(S)VCD disc, a menu may be displayed on the TV screen.

- Press **MENU** to access or exit disc menu manually.

For VCD with PlayBack Control (PBC) feature (version 2.0 only):

With the PBC feature, you can play VCD interactively according to the menu screen.

- During play, press **MENU** to enable/disable PBC.
 - ↳ When PBC is enabled, the menu screen is displayed.
 - ↳ When PBC is disabled, normal play is resumed.

Select an audio language

- During disc play, press **AUDIO** (▼) repeatedly to select an audio language for a DVD or DivX (Home Theater 3.1) video.
 - ↳ The language options are displayed.
 - If the selected audio channel is unavailable, the default disc audio channel is used.

≡ Note

- For some DVDs, the language can only be changed from the disc menu. Press **MENU** to access the menu.

Select a subtitle language

- During play, press **SUBTITLE** (▲) repeatedly to select a subtitle language for a DVD or DivX (Home Theater 3.1) video.

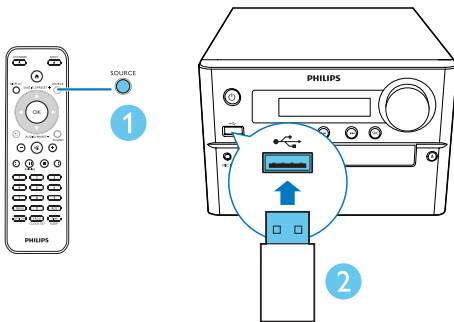
≡ Note

- For some DVDs, the language can only be changed from the disc menu. Press **MENU** to access the disc menu.

Play from USB or recored discs

You can play DivX (Home Theater 3.1)/MP3/JPEG picture files copied onto a CD-R/RW, recordable DVD, or USB storage device.

- 1 Select a source.
 - Press **SOURCE** repeatedly to select the USB source or Disc source.
- 2 Insert the USB storage device.
 - ↳ Play starts automatically.



To play a specified file:

- 1 Press **■** to stop play.
- 2 Press **▲** / **▼** to select a folder; and then press **OK** to confirm.
 - To return to the previous menu, press **↶**.
- 3 Press **▲** / **▼** to select a file from the folder.
- 4 Press **▶||** to start play.

Note

- You can only play DivX (Home Theater 3.1) videos rented or purchased through the DivX registration code of this unit.
- Subtitle files with the following filename extensions (.srt, .smi, .sub, .ssa, .ass) are supported but do not appear on the file navigation menu.
- The subtitle filename has to be the same as the file name of the video.

Play a slideshow with background music

This unit can play MP3 files and JPEG photos simultaneously.

Note

- The MP3 and JPEG files must be stored on the same disc or USB storage device.

- 1 Play an MP3 file.
- 2 Navigate to the photo folder/album and press **▶||** to start the slideshow.
 - ↳ Slideshow begins and continues till the end of the photo folder or album.
 - ↳ Music play continues till the end of the last file.
 - To return to the previous menu, press **↶**.
 - To stop the slideshow, press **■**.

Resume video play from last stopped point

Note

- This feature is only available for CD/DVD/VCD/DivX play.

- In stop mode and when the disc has not been removed, press **▶||**.

To stop play completely:

- In stop mode, press **■**.

Control play

▲ / ▼	Select a folder.
◀ / ▶ (◀◀ / ▶▶)	Fast backward/forward.
⏪ / ⏩	Skip to previous or next title/chapter/track/file.
▶	Pause or resume play.
■	Stop play.
+/-	Increase or decrease the volume.
🔇 (mute)	Mute or restore sound.
SOUND	Enrich sound effect with DSC: balanced, clear, powerful, warm, and bright.
DISPLAY	View playback information.

Play options

During video play in DISC mode, press **OPTIONS** to select different play options.

- **[PBC]** (PBC): turn PlayBack Control on/off.
- **[Aspect Ratio]**(Aspect ratio): select a picture display format to fit the TV screen.
- **[Angle]** (Angle): switch between camera angles.

Note

- Some DVDs contain alternate scenes, such as scenes recorded from different camera angles. For such DVDs, you can select from the available alternate scenes.

- **[Microphone]** (Microphone): turn on or off the microphone sound output.
- **[Karaoke Setup]** (karaoke Setup): set different volumes of karaoke disc.
- **[Vocal]** (Vocal): select various Karaoke audio modes, or turn off original vocal.
- **[Zoom]** (Zoom): during video play, zoom in/out to pan through the image.
- **[Repeat]** (Repeat): choose a repeat play option or turn off the repeat function.

- **[Goto]** (Goto): during video play, specify a position to start play by entering the desired time or number.
- **[Slow forward]** (Slow forward) and **[Slow Backward]** (Slow Backward): during video play, select a slow forward/backward speed.

Change the audio channel

Note

- This feature is only available for VCDs and DivX (Home Theater 3.1) videos.
- During play, press **AUDIO** (▼) repeatedly to select an audio channel available on the disc:
 - **[Mono Left]** (mono left)
 - **[Mono Right]** (mono right)
 - **[Mix-Mono]** (mix-mono)
 - **[Stereo]** (stereo)

6 Enjoy karaoke

You can connect a microphone (not supplied) to sing along with a music source.

Note

- Before you connect a microphone, set the microphone volume to the minimum to prevent howling.

- 1 Insert a Karaoke disc.
- 2 Connect a microphone to the **MIC IN** socket on this unit.
- 3 Press **▲**, and then select **[Karaoke]** (Karaoke).
- 4 Turn on the microphone sound output.
- 5 Play a Karaoke disc and sing through the microphone.

Adjust Karaoke settings

- **[Microphone]** (Microphone): turn on or off the microphone sound output.
- **[Mic Volume]** (Mic Volume): adjust the microphone volume.
- **[Echo Level]** (Echo Level): adjust the echo level.
- **[Karaoke Scoring]** (Karaoke Scoring): turn off the function of Karaoke scoring or select a difficulty level to score your singing. If a level is selected, the score is displayed after each song ends.
- **[Karaoke Idol]** (Karaoke Idol): Have a Karaoke contest with your friends. Enable this feature, and then follow the on-screen instructions to start the contest.

- 1) In the **[Karaoke Scoring]** (Karaoke Scoring) option, select a level (basic/intermediate/advance).
- 2) In the **[Karaoke Idol]** (Karaoke Idol) option, turn on the contest.
 - ↳ The song selection menu is displayed.
- 3) Input a track (VCD/SVCD) or a title/chapter (DVD) as the first song. Up to 4 songs can be selected.
- 4) Then select **[Start]** (Start), and press **OK** to start play selected songs.
 - ↳ After all the selected songs end, a contest result is displayed.

- **[Key Shift]** (Key Shift): adjust the pitch level that matches your voice.
- **[Vocal]** (Vocal): select various Karaoke audio modes, or turn off the original vocal.

7 Listen to the radio

Tune to a radio station



Tip

- Position the antenna as far as possible from TV, or other radiation sources.
- For optimal reception, fully extend and adjust the position of the antenna.

- 1 Press **SOURCE** repeatedly to select the FM source.
- 2 Press and hold **◀/▶** (**◀◀/▶▶**) for more than two seconds.
↳ The radio tunes to a station with strong reception automatically.

- 3 Repeat step 2 to tune to more stations.

To tune to a weak station:

- Press **◀/▶** (**◀◀/▶▶**) repeatedly until you find the optimal reception.

Program radio stations automatically



Note

- You can program a maximum of 30 preset radio stations (FM).
- In tuner mode, press and hold **PROG/CLOCK SET** for more than two seconds to activate automatic programming.
↳ **[AUTO]** (auto) is displayed.
↳ All available stations are programmed in the order of waveband reception strength, and the first programmed radio station is broadcast automatically.

Program radio stations manually

- 1 Tune to a radio station.
- 2 Press **PROG**, and then press **▲/▼** to select a number from 1–30.
- 3 Press **PROG** to confirm.
- 4 Repeat steps 2–3 to program more stations.



Note

- To overwrite a programmed station, store another station in its place.

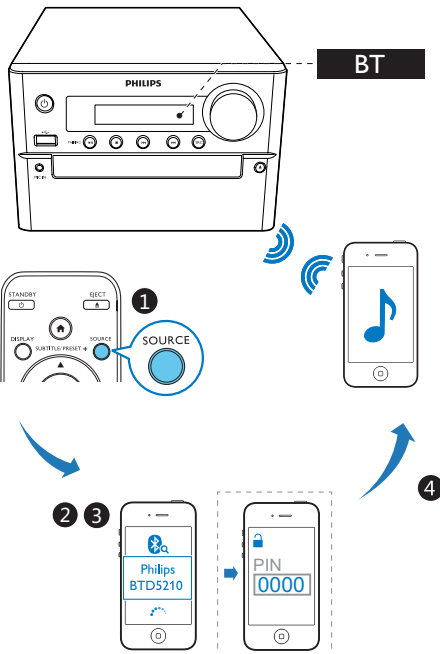
Select a preset radio station

- In tuner mode, press **◀◀/▶▶** (or press a number directly) to select a preset radio station.

8 Play from Bluetooth-enabled devices

Note

- The effective operation range between the unit and your Bluetooth enabled device is approximately 10 meters (30 feet).
- Any obstacle between the system and the device can reduce the operational range.
- Compatibility with all Bluetooth devices is not guaranteed.



- 1 Press **SOURCE** repeatedly to select the **Bluetooth** source.
 - ↳ **[BT]** (Bluetooth) is displayed.
 - ↳ The ϕ indicator flashes blue quickly.

- 2 On your device that supports Advanced Audio Distribution Profile (A2DP), enable Bluetooth and search for Bluetooth devices that can be paired (refer to the user manual of the device).
- 3 Select **'Philips BTDS5210'** on your Bluetooth enabled device and if necessary input '0000' as the pairing password.
 - ↳ After successful pairing and connection, the Bluetooth indicator turns solid blue, and the unit beeps twice.
- 4 Play audio on the connected device.
 - ↳ Audio streams from your Bluetooth enabled device to this unit.
 - If you fail to search for **"Philips BTDS5210"** or cannot pair with this product, press and hold **▶|||/PAIRING** for three seconds until the Bluetooth indicator flashes blue quickly to enter pairing mode.

Tip

- The unit can memorize up to 8 previously connected Bluetooth devices.

To disconnect the Bluetooth-enabled device:

- Deactivate Bluetooth on your device; or
- Move the device beyond the communication range.

To clear Bluetooth pairing history:

- Press and hold **▶|||** on the main set for 8 seconds.
 - ↳ The current Bluetooth connection is disconnected.
 - ↳ After successful clearing, the unit beeps.

9 Other features

Set the alarm timer

This unit can be used as an alarm clock. You can select DISC, FM, or USB as the alarm source.

Note

- Make sure that you have set the clock correctly.

- 1 In standby mode, press and hold **TIME/SLEEP** for more than two seconds.
↳ "The hour digits are displayed and begin to blink.
- 2 Press **▲ / ▼ (or + / -)** repeatedly to set the hour, and then press **TIME/SLEEP**.
↳ The minute digits are displayed and begin to blink.
- 3 Repeat step 2 to select the source, and adjust volume.

Note

- If no button is pressed in 90 seconds, the unit exits timer setting mode automatically.

To activate or deactivate the alarm timer:

- In standby mode, press **TIME/SLEEP** repeatedly to activate or deactivate the alarm.
↳ If the timer is activated, **⌚** is displayed.

Tip

- If the disc/USB source is selected, but no disc is placed or no USB connected, the unit switches to the tuner source automatically.

Set the sleep timer

- To set the sleep timer, when the unit is switched on, press **TIME/SLEEP** repeatedly to select a set period of time (in minutes).
↳ When the sleep timer is activated, **zZ** is displayed.

To deactivate sleep timer:

- When the unit is switched on, press **TIME/SLEEP** repeatedly until **[SLP OFF]** (sleep off) is displayed.
↳ When the sleep timer is deactivated, **zZ** disappears.

Listen to an external device

You can listen to an external device through this unit with an 3.5mm audio cable (not supplied).

- 1 Make sure that the external audio device is connected to this unit.
- 2 Press **AUX** to select the **AUX IN** source.
- 3 Start to play the external device (see the user manual of the external device).

10 Adjust settings

- 1 Press **▲**.
- 2 Select the **[Setup]** (Setup) page.
- 3 Select a setting and press **OK**.
 - To return to the previous menu, press **↶**.
 - To exit the menu, press **▲**.

General setup

On the **[General]** (general) page, you can set the following options:

[Disc Lock] (disc lock)

Lock or unlock a disc.

[OSD Language] (OSD language)

Select the preferred language for on-screen display.

[Auto Standby] (Auto Standby)

Enable this feature to automatically switch to Eco-power standby mode after 15 minutes of inactivity.

[DivX(R) VOD Code] (DivX(R) VOD Code)

Display the DivX(R) registration code.



Note

- Enter this DivX registration code when you rent or purchase a video from <http://vod.divx.com/>. The DivX videos rented or purchased through the DivX_VOD (Video On Demand) service can be played only on the device to which it is registered.

Video setup

On the **[Video]** (Video) page, you can set the following options:

[TV system] (TV System)

Change this setting if the video is not displayed correctly. By default, this setting matches the most common setting for TVs in your country.

- **[PAL]** (PAL) - For TV with PAL color system.
- **[Multi]** (Multi) - For TV that is compatible with both PAL and NTSC.
- **[NTSC]** (NTSC) - For TV with NTSC color system.

[TV Display] (TV Display)

The TV format determines the aspect ratio of display according to the type of TV you have connected.



4:3 Pan Scan (PS)



4:3 Letter Box (LB)



16:9 (Wide Screen)

- **[4:3 Pan Scan]** (4:3 Pan Scan) – For 4:3 screen TV: full-height display with the trimmed sides.
- **[4:3 Letter Box]** (4:3 Letter Box) – For 4:3 screen TV: wide-screen display with black bars on the top and bottom of the screen.
- **[16:9]** (16:9 Wide Screen) – For wide-screen TV: display ratio 16:9.

[Picture Setting] (Picture Setting)

Select a predefined set of picture color settings.

- **[Standard]** (Standard) – Original color setting.
- **[Bright]** (Bright) – Vibrant color setting.
- **[Soft]** (Soft) – Soft color setting.
- **[Personal]** (Personal) – Customizes the color setting. Set the level of brightness, contrast, tint, and color saturation, and then press **OK**.

[HD JPEG] (HD JPEG)

Enjoy untouched and uncompressed JPEG pictures at its original resolution when you connect this product and the TV with an HDMI cable.

- **[On]** (On) – Display high definition picture.
- **[Off]** (Off) – Display standard picture.

Audio setup

On the **[Audio]** (Audio) page, you can set the following options:

[HDMI Audio] (HDMI Audio)

Select the HDMI audio setting when you connect this product and the TV with an HDMI cable.

- **[On]** (On) - Allow audio output through the TV and the speaker system. If the audio format on the disc is not supported, it will be downmixed to two-channel sound (linear-PCM).
- **[Off]** (Off) - Disable audio output from the TV. The sound is only output through the speaker system.

[Audio Sync] (Audio Sync)

Set the delay time for audio output when you play a video disc.

-
1. Press **OK**.
 2. Press **◀▶** to set the volume.
 3. Press **OK** to confirm and exit.
-

[Sound Mode] (Sound Mode)

Turn off or select your preferred sound mode.

- **[Original]** (Original)
- **[Movie Mode]** (Movie Mode)
- **[Music Mode]** (Music Mode)
- **[Gaming]** (Gaming)
- **[News]** (News)

[Night Mode] (Night Mode)

Make loud sound level softer and soft sound level louder so that you can watch the DVD movies at a low volume, without disturbing others.

- **[On]** (On) – enjoy quiet viewing at night (DVDs only).
- **[Off]** (Off) – enjoy surround sound with its full dynamic range.

Preferences

On the **[Preference]** (Preference) page, you can set the following options:

[Audio] (Audio)

Select the preferred audio language for disc play.

[Subtitle] (Subtitle)

Select the preferred subtitle language for disc play.

[Disc Menu] (Disc Menu)

Select the preferred disc menu language.

Note

- If the language you have set is not available on the disc, the disc uses its own default language.
- For some discs, the subtitle/audio language can only be changed from the disc menu.

[Parental Control] (Parental Control)

Restrict access to discs that are unsuitable for children. These types of discs must be recorded with ratings.

-
- 1) Press **OK**.
 - 2) Select a rating level, and then press **OK**.
 - 3) Press the numeric keys to enter the password.
-

Note

- Rated discs above the level you set in **[Parental Control]** (Parental Control) require a password to be played.
- The ratings are country-dependent. To allow all discs to play, select **[8 Adult]** (8 Adult).
- Some discs have ratings printed on them but are not recorded with ratings. This function has no effect on such discs.

[PBC] (PBC)

Play VCD interactively according to the menu screen.

- **[On]** (On): the menu screen is displayed.
- **[Off]** (Off): normal play is resumed.

[Password] (Password)

This setting allows you to change the password for parental control. The default password is 000000.

- 1) Press the numeric keys to enter '000000' or your last set password at **[Old Password]** (Old Password) field.
- 2) Enter the new password at **[New Password]** (New Password) field.
- 3) Enter the new password again at **[Confirm PWD]** (Confirm PWD) field.
- 4) Press **OK** to exit the menu.



Note

- If you forget the password, enter '000000' before you set a new password.

[DivX Subtitle] (DivX Subtitle)

Select a character set that supports the DivX subtitle.



Note

- Ensure that the subtitle file has the exact same file name as the movie file. If for example the file name of the movie is 'Movie.avi', and then you will need to name the text file 'Movie.sub' or 'Movie.srt'.

[Version Info] (Version Information)

Display the software version of this device.

[Default] (Default)

Reset all the settings to factory default, except for the password and parental settings.

11 Product information



Note

- Product information is subject to change without prior notice.

Specifications

Amplifier

Maximum Output Power	Maximum 70 W
Frequency Response	40 Hz - 20 kHz; +/-3 dB
Signal to Noise Ratio	≥75 dB
Total Harmonic Distortion	<1%
Audio in Input	2V +/- 100mV RMS 22kohm

Speakers

Speaker Impedance	8 ohm
Speaker Driver	4.5" woofer,1.25"Tweeter
Sensitivity	83 +/-3 dB/m/W

Tuner (FM)

Tuning Range	87.5-108 MHz
Tuning grid	50 KHz
Preset stations	30
Sensitivity	≤22 dBf
- Mono, 26dB S/N Ratio	≤48 dBf
- Stereo, 46dB S/N Ratio	
Search Selectivity	≤32 dBf
Total Harmonic Distortion	≤3 %
Signal to Noise Ratio	≥45 dB

Bluetooth

Bluetooth version	V2.1+EDR
Frequency band	2.4 GHz ~ 2.48 GHz ISM Band
Range	10 m (free space)

Disc

Laser Type	Semiconductor
Disc Diameter	12 cm/8 cm
Video Decoding	MPEG-1 / MPEG-2 / DivX
Video DAC	12 Bits
Signal System	PAL / NTSC
Video Format	4:3 / 16:9
Video S/N	>57 dB
Audio DAC	24 Bits / 96 kHz
Total Harmonic Distortion	<1% (1 kHz)
Frequency Response	4 Hz - 20 kHz (44.1 kHz) 4 Hz - 22 kHz (48 kHz) 4 Hz - 24 kHz (96 kHz)
Frequency Response	20 Hz - 20 kHz (44.1 kHz)
S/N Ratio(A-weighted)	≥ 80 dBA
Mic	3.5 mm input

General information

AC power	100-240V, 50/60 Hz
Operation Power Consumption	≤25 W
Eco Standby Power Consumption	≤0.5 W
Dimensions	
- Main Unit (W x H x D)	200 x 240 x 121 mm
- Speaker Box (W x H x D)	160 x 210 x 235 mm
Weight	
- Main Unit	1.67 kg
- Speaker Box	2.16 x 2 kg

Supported disc formats

- Digital Video Discs (DVDs)
- Video CDs (VCDs)
- SuperVideo CDs (SVCDs)
- Digital Video Discs + Rewritable (DVD+RW)
- Compact Discs (CDs)
- Picture (Kodak, JPEG) files on CDR(W)
- DivX(R) disc on CD-R(W):
- DivX 3.11, 4.x and 5.x

Supported MP3-CD formats:

- ISO 9660
- Max. title/album name: 12 characters
- Max. title number plus album: 255.
- Max. nested directory: 8 levels.
- Max. album number: 32.
- Max. MP3 track number: 999.
- Supported sampling frequencies for MP3 disc: 32 kHz, 44.1 kHz, 48 kHz.
- Supported Bit-rates of MP3 disc are: 32, 64, 96, 128, 192, 256 (kbps).
- The following formats are not supported:
 - Files like *.VMA, *.AAC, *.DLF, *.M3U,
 - *.PLS, *.WAV
 - Non-English Album/Title name
 - Discs recorded in Joliet format
 - MP3 Pro and MP3 with ID3 tag

- Number of albums/ folders: maximum 99
- Number of tracks/titles: maximum 999
- ID3 tag v2.0 or later
- File name in Unicode UTF8 (maximum length: 32 bytes)

Unsupported formats:

- Empty albums: an empty album is an album that does not contain MP3/WMA files, and will not be shown in the display.
- Unsupported file formats are skipped. For example, word documents (.doc) or MP3 files with extension .dlf are ignored and not played.
- WMA, AAC, WAV, PCM audio files
- DRM protected WMA files (.wav, .m4a, .m4p, .mp4, .aac)
- WMA files in Lossless format

USB playability information

Compatible USB devices:

- USB flash memory (USB2.0 or USB1.1)
- USB flash players (USB2.0 or USB1.1)
- memory cards (requires an additional card reader to work with this unit)

Supported formats:

- USB or memory file format: FAT12, FAT16, FAT32 (sector size: 512 bytes)
- MP3 bit rate (data rate): 32-320 Kbps and variable bit rate
- Directory nesting up to a maximum of 8 levels

12 Troubleshooting



Warning

- Never remove the casing of this device.

To keep the warranty valid, never try to repair the system yourself.

If you encounter problems when using this device, check the following points before requesting service. If the problem remains unsolved, go to the Philips Web page (www.philips.com/support). When you contact Philips, make sure that the device is nearby and the model number and serial number are available.

No power

- Make sure that the AC power cord of the device is connected properly.
- Make sure that there is power at the AC outlet.
- As a power-saving feature, the system switches off automatically 15 minutes after track play reaches the end and no control is operated.

No sound or poor sound

- Adjust the volume.
- Check that the speakers are connected correctly.
- Check if the stripped speaker wires are clamped.

Remote control does not work

- Before you press any function button, first select the correct source with the remote control instead of the main unit.
- Reduce the distance between the remote control and the unit.
- Insert the battery with its polarities (+/- signs) aligned as indicated.
- Replace the battery.
- Aim the remote control directly at the sensor on the front of the unit.

No disc detected

- Insert a disc.

- Check if the disc is inserted upside down.
- Wait until the moisture condensation at the lens has cleared.
- Replace or clean the disc.
- Use a finalized CD or correct format disc.

Disc does not play

- Insert a readable disc with the label side facing up.
- Check the disc type, color system and regional code. Check for any scratches or smudges on the disc.
- Press **▲** to exit the system setup menu.
- Disable the password for parental control or change the rating level.
- Moisture has condensed inside the system. Remove the disc and leave the system turned on for about an hour. Disconnect and reconnect the AC power plug, and then turn on the system again.

No picture

- Check the video connection.
- Turn on the TV to the correct Video-In channel.
- Progressive scan is activated but the TV does not support progressive scan.

Black and white or distorted picture

- The disc does not match the TV color system standard (PAL/NTSC).
- Sometimes a slight picture distortion may appear. This is not a malfunction.
- Clean the disc.
- A distorted picture may appear during progressive scan setup.

The aspect ratio of the TV screen cannot be changed even though you have set the TV display format.

- The aspect ratio is fixed on the loaded DVD disc.
- The aspect ratio may not be changed for some TV systems.

DivX video files cannot be played.

- Ensure that the DivX video file is complete.
- Ensure that the file extension is correct.

- Due to Digital Rights issue, the DRM-protected video files cannot be played through an analog video connection (e.g. composite, component and scart). Transfer the video content onto the Disc Media and play these files.

Audio or subtitle languages cannot be set

- The disc is not recorded with sound or subtitles in multiple languages.
- The audio or subtitle language setting is prohibited on the disc.

Cannot display some files in USB device

- The number of folders or files in the USB device has exceeded a certain limit. This phenomenon is not a malfunction.
- The formats of these files are not supported.

USB device not supported

- The USB device is incompatible with the unit. Try another one.

Poor radio reception

- Increase the distance between the unit and your TV or other radiation sources.
- Connect and fully extend the supplied antenna.

Music playback is unavailable on this unit even after successful Bluetooth connection.

- The device cannot be used to play music through this unit wirelessly.

The audio quality is poor after connection with a Bluetooth-enabled device.

- The Bluetooth reception is poor. Move the device closer to this unit or remove any obstacle between them.

Cannot connect with this unit.

- The device does not support the profiles required for this unit.
- The Bluetooth function of the device is not enabled. Refer to the user manual of the device to find out how to enable the function.
- This unit is not in pairing mode.

- This unit is already connected with another Bluetooth-enabled device. Disconnect that device and then try again.

The paired mobile device connects and disconnects constantly.

- The Bluetooth reception is poor. Move the device closer to this unit or remove any obstacle between them.
- Some mobile phones may connect and disconnect constantly when you make or end calls. This does not indicate any malfunction of this unit.
- For some devices, the Bluetooth connection may be deactivated automatically as a power-saving feature. This does not indicate any malfunction of this unit.

Timer does not work

- Set the clock correctly.
- Switch on the timer.

Clock/timer setting erased

- Power has been interrupted or the power cord has been disconnected.
- Reset the clock/timer.

13 Notice

Any changes or modifications made to this device that are not expressly approved by Gibson Innovations may void the user's authority to operate the equipment.

CE 0890

Declaration of conformity

Hereby, Gibson Innovations declares that this product is in compliance with the essential requirements and other relevant provisions of Directive 1999/5/EC. You can find the Declaration of Conformity on www.philips.com/support.

Disposal of your old product and battery



Your product is designed and manufactured with high quality materials and components, which can be recycled and reused.



This symbol on a product means that the product is covered by European Directive 2012/19/EU.



This symbol means that the product contains batteries covered by European Directive 2013/56/EU which cannot be disposed of with normal household waste. Inform yourself about the local separate collection system for electrical and electronic

products and batteries. Follow local rules and never dispose of the product and batteries with normal household waste. Correct disposal of old products and batteries helps prevent negative consequences for the environment and human health.

Removing the disposable batteries

To remove the disposable batteries, see battery installation section.

Environmental information

All unnecessary packaging has been omitted. We have tried to make the packaging easy to separate into three materials: cardboard (box), polystyrene foam (buffer) and polyethylene (bags, protective foam sheet.)

Your system consists of materials which can be recycled and reused if disassembled by a specialized company. Please observe the local regulations regarding the disposal of packaging materials, exhausted batteries and old equipment.



**Be responsible
Respect copyrights**

This item incorporates copy protection technology that is protected by U.S. patents and other intellectual property rights of Rovi Corporation. Reverse engineering and disassembly are prohibited.



The Bluetooth® word mark and logos are registered trademarks owned by Bluetooth SIG, Inc. and any use of such marks by Gibson Innovations Limited is under license. Other trademarks and trade names are those of their respective owners.



Manufactured under license from Dolby Laboratories. "Dolby" and the double-D symbol are trademarks of Dolby Laboratories.



'DVD Video' is a trademark of DVD Format/ Logo Licensing Corporation.

DIVX™

ABOUT DIVX VIDEO: DivX® is a digital video format created by DivX, LLC, a subsidiary of Rovi Corporation. This is an official DivX Certified® device that plays DivX video. Visit divx.com for more information and software tools to convert your files into DivX videos.

ABOUT DIVX VIDEO-ON-DEMAND: This DivX Certified® device must be registered in order to play purchased DivX Video-on-Demand (VOD) movies. To obtain your registration code, locate the DivX VOD section in your device setup menu. Go to vod.divx.com for more information on how to complete your registration.

DivX®, DivX Certified® and associated logos are trademarks of Rovi Corporation or its subsidiaries and are used under license.



HDMI, and HDMI logo and High-Definition Multimedia Interface are trademarks or registered trademarks of HDMI licensing LLC in the United States and other countries.

This apparatus includes this label:



Note

- The type plate is located on the back of the device.



Specifications are subject to change without notice.

2015 © Gibson Innovations Limited. All rights reserved.

This product has been manufactured by, and is sold under the responsibility of Gibson Innovations Ltd., and Gibson Innovations Ltd. is the warrantor in relation to this product. Philips and the Philips Shield Emblem are registered trademarks of Koninklijke Philips N.V. and are used under license from Koninklijke Philips N.V.

BTD5210_12_UM_V1.0

