

# DVD Player/ Recorder

# DVDR3390

User Manual	6
Manuel D'utilisation	68
Manual de Instrucciones	132



Thank you for choosing Philips.

## Need help fast?

Read your Quick Use/Start Guide and/or Owner's Manual first for quick tips that make using your Philips product more enjoyable.

If you have read your instructions and still need assistance, you may access our online help at

[www.philips.com/usasupport](http://www.philips.com/usasupport)  
or call

**1-888-PHILIPS (744-5477)**  
while with your product  
(and Model / Serial number)



Philips vous remercie de votre confiance.

## Besoin d'une aide rapide?

Les Guide d'utilisation rapide et Manuel de l'utilisateur regorgent d'astuces destinées à simplifier l'utilisation de votre produit Philips.

Toutefois, si vous ne parvenez pas à résoudre votre problème, vous pouvez accéder à notre aide en ligne à l'adresse

[www.philips.com/usasupport](http://www.philips.com/usasupport)  
ou formez le

**1-800-661-6162 (Francophone)**  
**1-888-PHILIPS (744-5477) (English speaking)**

Veillez à avoir votre produit à portée de main  
(et model / serial nombre)



Gracias por escoger Philips.

## Necesita ayuda inmediata?

Lea primero la Guía de uso rápido o el Manual del usuario, en donde encontrará consejos que le ayudarán a disfrutar plenamente de su producto Philips.

Si después de leerlo aún necesita ayuda, consulte nuestro servicio de asistencia en línea en

[www.philips.com/usasupport](http://www.philips.com/usasupport)  
o llame al teléfono

**1-888-PHILIPS (744-5477)**  
y tenga a mano el producto  
(y número de model / serial)



# PHILIPS

**Return your Product Registration Card or register online at  
www.philips.com/usasupport today to get the very most from your purchase.**

Registering your model with PHILIPS makes you eligible for all of the valuable benefits listed below, so don't miss out. Complete and return your Product Registration Card at once, **or register online at www.philips.com/usasupport** to ensure:

**\*Proof of Purchase**

Returning the enclosed card guarantees that your date of purchase will be on file, so no additional paperwork will be required from you to obtain warranty service.

**\*Product Safety Notification**

By registering your product, you'll receive notification - directly from the manufacturer - in the rare case of a product recall or safety defect.

**\*Additional Benefits**

Registering your product guarantees that you'll receive all of the privileges to which you're entitled, including special money-saving offers.

# PHILIPS

***Congratulations on your purchase, and welcome to the "family!"***

**Dear PHILIPS product owner:**

Thank you for your confidence in PHILIPS. You've selected one of the best-built, best-backed products available today. We'll do everything in our power to keep you happy with your purchase for many years to come. As a member of the PHILIPS "family," you're entitled to protection by one of the most comprehensive warranties and outstanding service networks in the industry. What's more, your purchase guarantees you'll receive all the information and special offers for which you qualify, plus easy access to accessories from our convenient home shopping network.

Most importantly, you can count on our uncompromising commitment to your total satisfaction.

All of this is our way of saying welcome - and thanks for investing in a PHILIPS product.

**P.S. To get the most from your PHILIPS purchase, be sure to complete and return your Product Registration Card at once, or register online at:**

**www.philips.com/usasupport**

Know these **safety** symbols



This "bolt of lightning" indicates uninsulated material within your unit may cause an electrical shock. For the safety of everyone in your household, please do not remove product covering.

The "exclamation point" calls attention to features for which you should read the enclosed literature closely to prevent operating and maintenance problems.

**WARNING:** To reduce the risk of fire or electric shock, this apparatus should not be exposed to rain or moisture and objects filled with liquids, such as vases, should not be placed on this apparatus.

**CAUTION:** To prevent electric shock, match wide blade of plug to wide slot, fully insert.

**ATTENTION:** Pour éviter les choc électriques, introduire la lame la plus large de la fiche dans la borne correspondante de la prise et pousser jusqu'au fond.

**For Customer Use**

Enter below the Serial No. which is located on the rear of the cabinet. Retain this information for future reference.

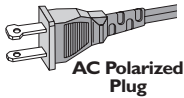
Model No. \_\_\_\_\_  
Serial No. \_\_\_\_\_


# PHILIPS


Visit our World Wide Web Site at <http://www.philips.com/usasupport>

# IMPORTANT SAFETY INSTRUCTIONS

1. Read these instructions.
2. Keep these instructions.
3. Heed all warnings.
4. Follow all instructions.
5. Do not use this apparatus near water.
6. Clean only with dry cloth.
7. Do not block any ventilation openings. Install in accordance with the manufacturer's instructions.
8. Do not install near any heat sources such as radiators, heat registers, stoves, or other apparatus (including amplifiers) that produce heat.
9. Do not defeat the safety purpose of the polarized or grounding-type plug. A polarized plug has two blades with one wider than the other. A grounding type plug has two blades and a third grounding prong. The wide blade or the third prong are provided for your safety. If the provided plug does not fit into your outlet, consult an electrician for replacement of the obsolete outlet.
10. Protect the power cord from being walked on or pinched, particularly at plugs, convenience receptacles, and the point where they exit from the apparatus.
11. Only use attachments/accessories specified by the manufacturer.



12.  Use only with the cart, stand, tripod, bracket, or table specified by the manufacturer or sold with the apparatus. When a cart is used, use caution when moving the cart/apparatus combination to avoid injury from tip-over.
13. Unplug this apparatus during lightning storms or when unused for long periods of time.
14. Refer all servicing to qualified service personnel. Servicing is required when the apparatus has been damaged in any way, such as power-supply cord or plug is damaged, liquid has been spilled or objects have fallen into the apparatus, the apparatus has been exposed to rain or moisture, does not operate normally, or has been dropped.
15. Battery usage **CAUTION** – To prevent battery leakage which may result in bodily injury, property damage, or damage to the unit:
  - Install **all** batteries correctly, + and - as marked on the unit.
  - Do not mix batteries (**old** and **new** or **carbon** and **alkaline**, etc.).
  - Remove batteries when the unit is not used for a long time.
16. Apparatus shall not be exposed to dripping or splashing.
17. Do not place any sources of danger on the apparatus (e.g. liquid filled objects, lighted candles).
18. This product may contain lead and mercury. Disposal of these materials may be regulated due to environmental considerations. **For disposal or recycling information, please contact your local authorities or the Electronic Industries Alliance : [www.eiae.org](http://www.eiae.org).**

**Class II equipment symbol**   
This symbol indicates that the unit has a double insulation system

EL 6475-E005: 04/01

## LASER

Type	Semiconductor laser InGaAlP (DVD) AlGaAs (CD)
Wave length	658 nm (DVD) 790 nm (CD)
Output Power	30 mW(DVD±RW write) 1.0 mW (DVD read) 1.0 mW (CD read)
Beam divergence	84 degrees (DVD) 61 degrees (CD)

## Canada

### English:

This digital apparatus does not exceed the Class B limits for radio noise emissions from digital apparatus as set out in the Radio Interference Regulations of the Canadian Department of Communications.

### Français:

Cet appareil numérique n'émet pas de bruits radioélectriques dépassant les limites applicables aux appareils numériques de Class B prescrites dans le Règlement sur le Brouillage Radioélectrique édicté par le Ministère des Communications du Canada.

This warning label is located on the rearside and inside this laser product.

<b>CAUTION:</b>	INVISIBLE LASER RADIATION WHEN OPEN. DO NOT STARE INTO BEAM.
<b>DANGER:</b>	INVISIBLE LASER RADIATION WHEN OPEN. AVOID DIRECT EXPOSURE TO BEAM.
<b>VARO!</b>	AVATTAESSA JA SUOJALUKITUS OHITETTAESSA OLET ALTTIINANÄKYMÄTTÖMÄLLE LASERSATEILYLLE. ÄLÄ KATSO SATEESEEN.
<b>WARNING!</b>	OSYNLIG LASERSTRÅLNING NÄR DENNA DEL ÄR ÖPPNAD. OCH SPÄRREN ÄR URKOPPLAD. BETRÄKTA EJ STRÅLEN.

or

**DANGER** - Invisible laser radiation when open.  
AVOID DIRECT EXPOSURE TO BEAM.

## CAUTION

Use of controls or adjustments or performance of procedures other than herein may result in hazardous radiation exposure or other unsafe operation.

## ATTENTION

L'utilisation des commandes ou réglages ou le non-respect des procédures ci-inclues peuvent se traduire par une exposition dangereuse à l'irradiation.

## ATENCIÓN

El uso de mando o ajustes o la ejecución de métodos que no sean los aquí descritos puede ocasionar peligro de exposición a radiación.

Due to the inconsistency of disc formats provided by various disc manufacturers, your DVD system/player/recorder may require a playability enhancement or upgrade. As DVD technology advances, these enhancement will become common and will be easy to complete. Go to [www.philips.com/support](http://www.philips.com/support) for software upgrade.

\*CONSUMERS SHOULD NOTE THAT NOT ALL HIGH DEFINITION TELEVISION SETS ARE FULLY COMPATIBLE WITH THIS PRODUCT AND MAY CAUSE ARTIFACTS TO BE DISPLAYED IN THE PICTURE. IN CASE OF 525 OR 625 PROGRESSIVE SCAN PICTURE PROBLEMS, IT IS RECOMMENDED THAT THE USER SWITCH THE CONNECTION TO THE 'STANDARD DEFINITION' OUTPUT. IF THERE ARE QUESTIONS REGARDING OUR TV SET COMPATIBILITY WITH THIS MODEL 525p AND 625p DVD PLAYER, PLEASE CONTACT OUR CUSTOMER SERVICE CENTER.'

## Declaration of Conformity

Model number: DVDR3390  
Trade Name: Philips  
Responsible Party: Philips Consumer Electronics  
A Division of Philips Electronics  
North America Corp.  
P. O. Box 671539  
Marietta, GA 30006-0026  
1-800-PHILIPS (744-5477)

# Index



This product incorporates copyright protection technology that is protected by US patents. Use of this copyright protection technology must be authorized by Macrovision, and is intended for home and other limited viewing uses only unless otherwise authorized by Macrovision. Reverse engineering or disassembly is prohibited.

U.S. Patent Number:  
4,631,603; 4,819,098; 4,907,093; 5,315,448; and  
6,516,132.



Manufactured under license from Dolby Laboratories. "Dolby" and the double-D symbol are trademarks of Dolby Laboratories.



VCR Plus+ and PlusCode are registered trademarks of Gemstar Development Corporation. The VCR Plus+ system is manufactured under license from Gemstar Development Corporation.

U.S. Patent Number:  
4,908,713; 4,751,578; 4,706,121; 5,335,079;  
5,307,173; 6,430,359; 6,091,882; 6,049,652;  
6,466,734.

English ----- 6

Français ----- 68

Español ----- 132

English

Français

Español

**NOTE:** This equipment has been tested and found to comply with the limits for a Class B digital device, pursuant to Part 15 of the FCC Rules. These limits are designed to provide reasonable protection against harmful interference in a residential installation. This equipment generates, uses and can radiate radio frequency energy and, if not installed and used in accordance with the instructions, may cause harmful interference to radio communications. However, there is no guarantee that interference will not occur in a particular installation.

If this equipment does cause harmful interference to radio or television reception, which can be determined by turning the equipment off and on, the user is encouraged to try to correct the interference by one or more of the following measures:

- Reorient or relocate the receiving antenna.
- Increase the separation between the equipment and receiver.
- Connect the equipment into an outlet on a circuit different from that to which the receiver is connected.
- Consult the dealer or an experienced radio/TV technician for help.

# Table of Contents

## General

<b>Care and Safety Information .....</b>	<b>8</b>
Setup precautions.....	8
Cleaning discs .....	8
About recycling.....	8
<b>Product Information .....</b>	<b>9</b>
Introduction.....	9
Accessories supplied .....	9
Region codes.....	9
Copyright notice.....	9
Special Features.....	10

## Product Overview

<b>Main Unit .....</b>	<b>11</b>
<b>Remote Control .....</b>	<b>12</b>
Using the remote control .....	14

## Connections

<b>Step 1: Basic Recorder Connections.....</b>	<b>15</b>
Connecting the antenna cables .....	15
Connecting the video cable.....	16
Connecting the audio cables.....	17
<b>Step 2: Optional Connections.....</b>	<b>18</b>
TV has only an antenna input jack .....	18
Connecting to a Cable Box or Satellite Receiver .....	19
Connecting to a VCR or other similar device.....	20
Connecting to a VCR and Cable Box/Satellite Receiver.....	21
Connecting a camcorder to the front jacks.....	22
<b>Step 3: Installation and Setup.....</b>	<b>24</b>
Finding the correct viewing channel .....	24
Setting your TV channel programs .....	24
CHANNEL SETUP settings .....	25
Setting the language.....	26
Setting the time & date.....	26
LANGUAGE settings .....	27
CLOCK settings.....	27

## Recordings

<b>Recording .....</b>	<b>28</b>
Discs for recording .....	28
Recording settings .....	28
RECORD settings .....	29
Manual recording.....	31
One Touch Recording - automatic turn-off.....	31
About timer recording.....	32
Timer recording (manually).....	32
Timer recording (VCR Plus+® System).....	34
Changing/ Deleting a timer recording.....	35
Watching another TV channel during recording.....	35

# Table of Contents

## Edit Recordings

<b>Editing/Finalizing Recording</b> .....	<b>36</b>
About disc editing .....	36
Accessing disc editing menu .....	36
Playing your recordings (DVD±R) on other DVD players .....	38
About title editing .....	39
Accessing title editing menu .....	39
About video editing .....	41
Accessing video editing menu .....	41

## Playback

<b>Playback</b> .....	<b>44</b>
Playable discs .....	44
Inserting a disc .....	44
Starting disc playback .....	45
<b>Additional Playback Features</b> .....	<b>48</b>
Changing to another chapter/track .....	48
Pausing playback and step play .....	48
Searching forward/backward .....	48
Zooming in .....	48
Using T/C options .....	49

## Other Information

<b>DVD System Menu Options</b> .....	<b>52</b>
Accessing the System Menu .....	52
GENERAL settings .....	53
PLAYBACK settings .....	55
CLOCK settings .....	57
<b>Firmware Upgrade</b> .....	<b>58</b>
Installing the latest firmware .....	58
<b>Frequently Asked Questions</b> .....	<b>59</b>
<b>Troubleshooting</b> .....	<b>60</b>
<b>Specifications</b> .....	<b>64</b>
<b>Display panel/symbols messages</b> .....	<b>65</b>
<b>Glossary</b> .....	<b>66</b>

## Care and Safety Information

### CAUTION!

**High voltage! Do not open the device. You run the risk of getting an electric shock.**

**The machine does not contain any user-serviceable parts. Please leave all maintenance work to qualified personnel.**

### Setup precautions

#### Finding a suitable location

- Place the set on a flat, hard and stable surface. Do not place the set on a carpet.
- Do not position the set on top of other equipment that might heat it up (e.g., receiver or amplifier.)
- Do not put anything above or under the set (e.g., CDs, magazines.)
- Install this unit near the AC outlet and where the AC power plug can be reached easily.

#### Space for ventilation

- Place the apparatus in a location with adequate ventilation to prevent internal heat build up. Allow at least 10 cm (4") clearance from the rear and the top of the set and 5 cm (2") from the left and right to prevent overheating.

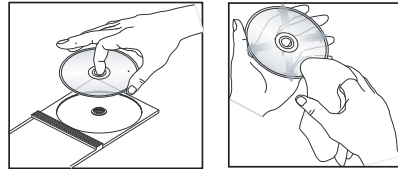
#### Avoid high temperatures, moisture, water and dust

- Apparatus shall not be exposed to dripping or splashing.
- Do not place any sources of danger on the apparatus (e.g., liquid filled objects, lighted candles.)

### Cleaning discs

Some problems occur because the disc inside the recorder is dirty (frozen picture, sound disruptions, picture distortions.) To avoid these problems, discs should be cleaned on a regular basis.

To clean a disc, use a micro fibre cleaning cloth and wipe the disc from the center to the edge in a straight line.



### CAUTION!

Do not use solvents such as benzene, thinner, commercially available cleaners, or anti-static sprays intended for analog discs. Since the optical unit (laser) of the recorder operates at a higher power than regular DVD or CD players, cleaning CDs intended for DVD or CD players may damage the optical unit (laser.) Therefore, refrain from using a cleaning CD.

### About recycling

These operating instructions have been printed on non-polluting paper. This electronic equipment contains a large number of materials that can be recycled. If you are disposing of an old machine, please take it to a recycling center. Please observe the local regulations regarding disposal of packaging materials, exhausted batteries, and old equipment.



## Product Information

### Introduction

Your Philips recorder allows you to record the TV programs or duplicate camcorder recordings to a DVD±RW or DVD±R and play pre-recorded DVDs. The recordings you make on the recorder will play on DVD players and DVD-ROM drives. The DVD±R discs have to be finalized before they can be played on other DVD players.

Before you start using this recorder, complete the basic connections and set-up in three easy steps.

#### Step 1: Basic recorder connections

#### Step 2: Optional connections for other devices

#### Step 3: Basic installation and set-up

Please take time to read this user manual before using your recorder. It contains important information and notes regarding operations of the recorder.

#### Helpful Hints:

- If you have questions or if problems come up during operation, please see the chapter 'Troubleshooting'.
- If you need further assistance, please call the customer support service for your country. The corresponding telephone numbers and e-mail addresses are given in the guarantee booklet.
- Refer to the type plate on the rear or bottom of the product for identification and supply ratings.

### Accessories supplied

- Remote control and batteries
- Audio/Video (AV) cables
- RF coaxial cable
- Quick Use Guide

### Region codes

DVD films are usually not released at the same time in all regions of the world, thus all DVD players are keyed to a specific region code.

This device will only play **Region 1** DVDs or DVDs manufactured to be played in all regions ('ALL'). DVDs from other regions cannot be played on this recorder.



### Copyright notice

The making of unauthorized copies of copy-protected material, including computer programs, files, broadcasts and sound recordings, may be an infringement of copyrights and constitute a criminal offence. This equipment should not be used for such purposes.

## Product Information (continued)

---



---

### Special Features

---



---



Philips DVD recorders support 'dual media' recording – the ability to create recordings on + and - discs. (DVD+R/+RW, DVD-R/-RW).



DivX®, DivX Certified, and associated logos are trademarks of DivX Networks, Inc and are used under license.

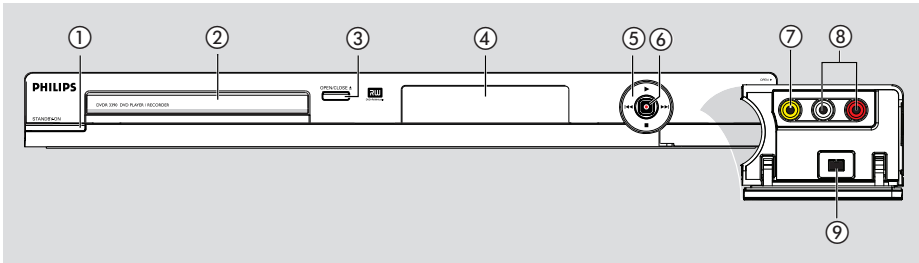


This is a simple programming system for recorders. To use it, enter the programming number associated with your television program. You can find this number in your favourite listings magazine.



i.LINK, is also known as 'FireWire' and 'IEEE 1394'. This connection is used for the transfer of high bandwidth digital signals as used by digital video (DV) devices. It carries all audio and video signals via a single cable.

# Main Unit



English

## ① STANDBY-ON

- Turns on the recorder or switch to standby mode.

## ② Disc tray

- ### ③ OPEN CLOSE ▲
- Opens/closes the disc tray.

## ④ System display panel

- Shows information about the current status of the recorder.

## ⑤ ◀◀ / ▶▶ (PREV/ NEXT)

- Go to the previous/next chapter or track. Press and hold to make a forward/reverse search.

### ▶ (PLAY)

- Plays a disc.

### ■ (STOP)

- Stop playback/recording.

## ⑥ ● (RECORD)

- Start recording the current TV channel or the current video input source.
- Press repeatedly to set up a One Touch Recording at 30, 60 or 90 minutes interval.

## Jacks behind the flap

Flip down the door as indicated by the **OPEN ▶** label at the right hand corner.

## ⑦ CAMI

- Video input for camcorders or video recorders. Press **REC SOURCE** on the remote control to select 'CAMI' in order to view the input source.

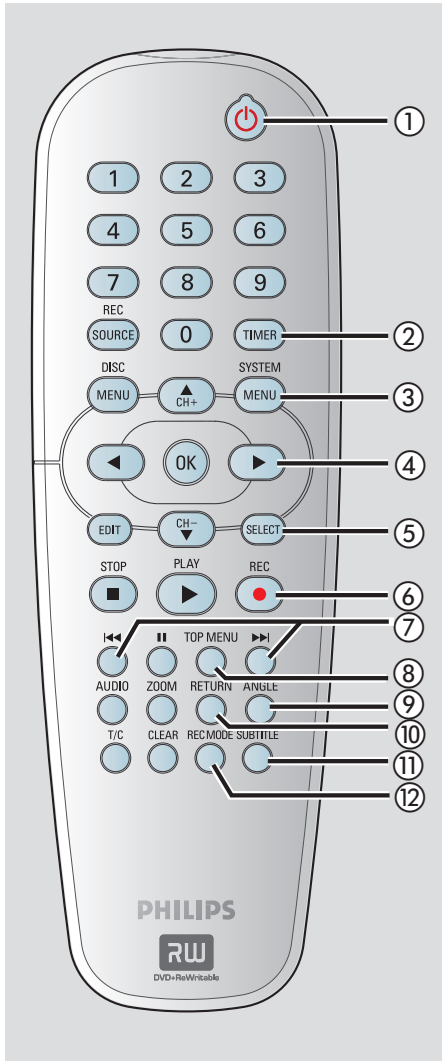
## ⑧ L/R AUDIO


- Audio input for camcorders or video recorders.

## ⑨ DV IN

- Input for digital camcorders or other suitable devices using this connector. Press **REC SOURCE** on the remote control to select 'DV' in order to view the input source.

# Remote Control

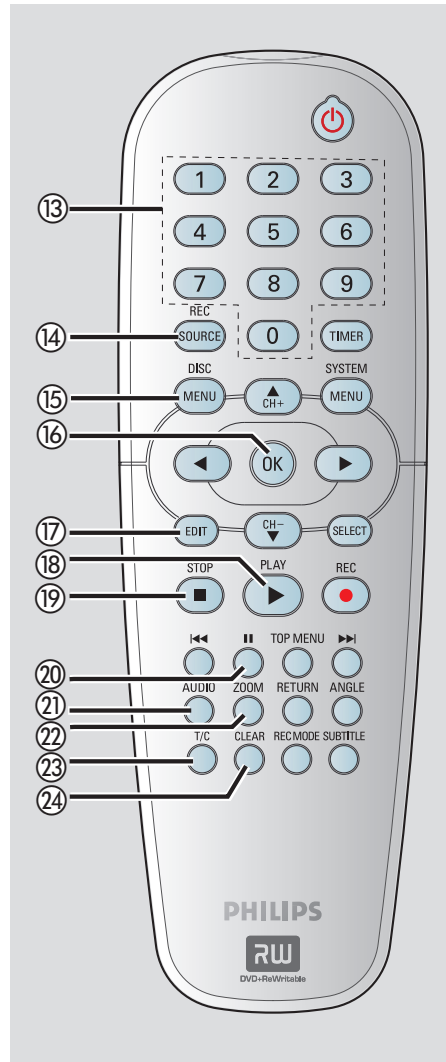


- ① **STANDBY-ON** 
  - Turns on the recorder or switch to standby mode.
- ② **TIMER**
  - Enters/exits the timer recording menu.
- ③ **SYSTEM-MENU**
  - Enters/exits the system setup menu.
- ④ **◀ ▶** : Cursor buttons for moving to the left or right, do a forward/reverse search.  
**▲ ▼** : Cursor buttons for moving up/down or changing the recorder's TV tuner channel.
- ⑤ **SELECT**
  - Selects a track/chapter/file in the program menu.
- ⑥ **REC ●**
  - Starts recording the current TV channel or the current video input source.
  - Press repeatedly to set up a One Touch Recording at 30, 60 or 90 minutes interval.
- ⑦ **◀◀ ▶▶**
  - Skips to previous or next chapter/track.
  - Press and hold to make a fast forward/ fast reverse search.
- ⑧ **TOP MENU** (For DVD±R/±RW only)
  - Enters the disc editing menu.
- ⑨ **ANGLE**
  - Selects a DVD disc camera angle (if available.)
- ⑩ **RETURN**
  - Returns to the previous menu of a video CD (VCD) or some DVDs.
- ⑪ **SUBTITLE**
  - Selects a DVD subtitle language.
- ⑫ **REC MODE**
  - Toggles between recording modes : HQ, SP, EP or SLP.  
This determines the quality of the recording and the amount/length of time you can record on a DVD±R/±RW.

## Remote Control (continued)

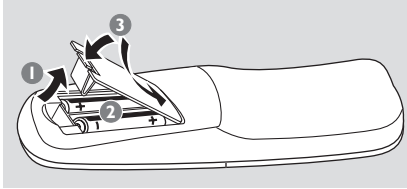
English

- ⑬ **Numeric keypad**
  - Selects a chapter/ track number to play.
  - Selects the recorder's preset TV tuner channel.
- ⑭ **REC SOURCE**
  - Selects the recorder's input source.
- ⑮ **DISC-MENU**
  - Access DVD disc menu or Index Picture screen of a DVD±R/±RW.
  - Access VCD disc menu when PBC is turned on.
- ⑯ **OK**
  - Stores/confirms an entry.
  - Displays/removes the status bar.
- ⑰ **EDIT** (For DVD±R/±RW only)
  - Enters/exits the video editing menu.
- ⑱ **PLAY ►**
  - Plays a disc.
- ⑲ **STOP ■**
  - Stops playback/recording.
  - Press and hold the button will open and close the disc tray.
- ⑳ **II**
  - Pauses the playback or recording.
  - Press repeatedly to advance a paused picture one frame at a time.
- ㉑ **AUDIO**
  - Selects an audio language (DVD, VCD) or an audio channel.
  - TUNER: toggles between stereo, mono and SAP (refer to your TV manual for available sound modes.)
- ㉒ **ZOOM**
  - Enlarges a picture on the TV screen.
- ㉓ **T/C (Title/Chapter)**
  - Enters/exits the T/C menu.
- ㉔ **CLEAR**
  - Clears a track/chapter/file in the program menu.
  - Clears a timer entry.



## Remote Control (continued)

### Using the remote control



- 1 Open the battery compartment.
- 2 Insert two batteries type R06 or AA, following the indications (+ -) inside the compartment.
- 3 Close the cover.

#### CAUTION!

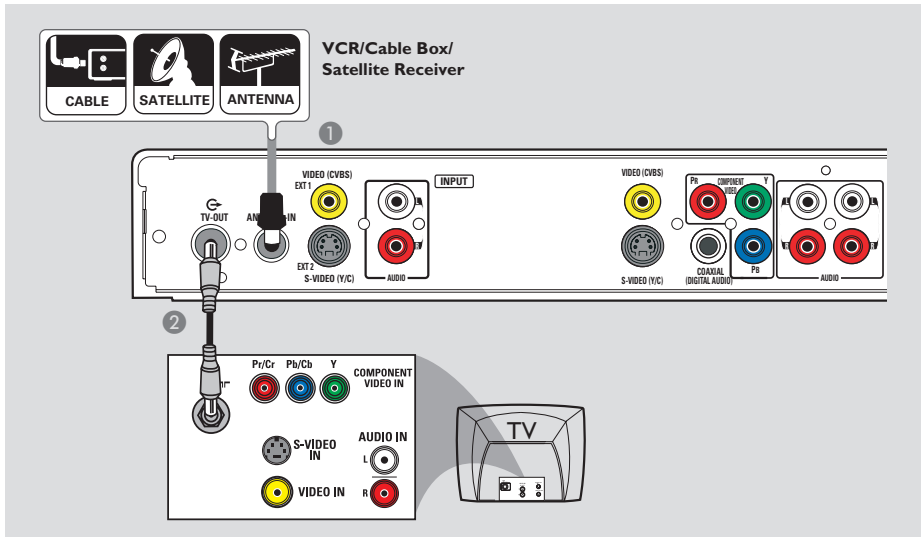
- Remove batteries if they are exhausted or if the remote is not to be used for a long time.
- Do not use old and new or different types of batteries in combination.
- Batteries contain chemical substances, so they should be disposed of properly.

### Using the remote control to operate the system



- 1 Aim the remote control directly at the remote sensor (IR) on the front panel.
- 2 Press **REC SOURCE** button on the remote control to select the mode you wish to control (for example TUNER, CAM1.)
- 3 Then select the desired function (for example **◀◀**, **▶▶**.)

# Step 1: Basic Recorder Connections



## Connecting the antenna cables

These connections enable you to watch and record TV programs using the recorder. If the antenna signal is connected via a VCR, Cable Box or Satellite Receiver, ensure that these devices are turned on in order to watch or record the cable programs.

- **If your TV is equipped with an Antenna In (RF IN) jack only,** See “Step 2 : Optional Connections – TV has only an antenna input jack” for the complete connection to your TV.
- **If you want to connect to a VCR and/or Cable Box/Satellite Receiver,** See “Step 2 : Optional Connections” for the complete connections to your TV.

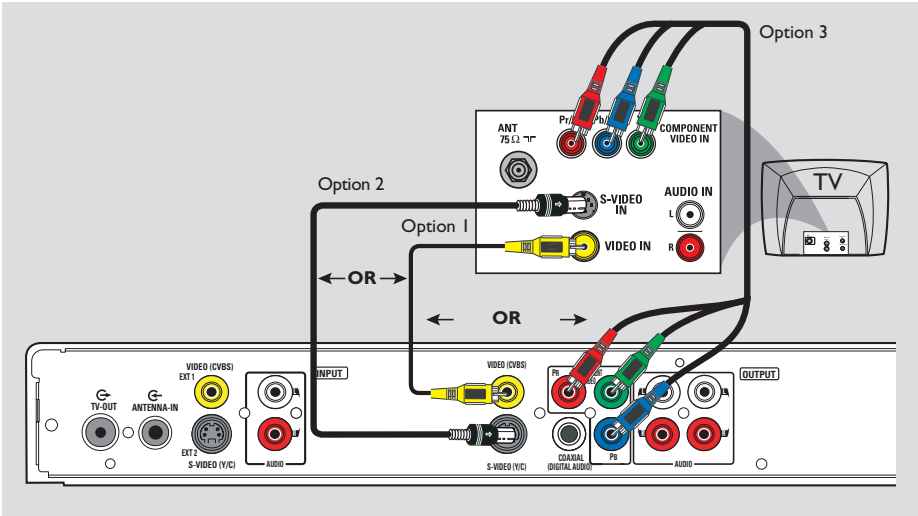
- 1 Connect the existing Antenna/Cable TV signal (or from the Cable Box/Satellite Receiver {RF OUT or TO TV}) to the **ANTENNA-IN** jack on the recorder.
- 2 Use the supplied RF coaxial cable to connect the **TV-OUT** jack on the recorder to the antenna input jack on your TV (VHF/UHF RF IN.)

### Helpful Hint:

– Depending on how you have currently connected your TV channel (directly from an off-air antenna or Cable box or VCR), you will have to disconnect some of the cables before you make the above connection.

**TIPS:** Before making or changing any connections, make sure that all the devices are disconnected from the power outlet.

## Step 1: Basic Recorder Connections (continued)



### Connecting the video cable

This connection allows you to view the disc playback from the recorder. You only need to choose one of the options below to make your video connection.

#### Option 1: Using a Video (CVBS) cable

- Use the supplied audio/video cables (yellow plug) to connect the **VIDEO (CVBS) OUTPUT** jack on the recorder to the video input jack (or labeled as A/V In, Video In or Composite) on the TV.

#### Option 2: Using an S-Video cable

- Use an S-video cable (not supplied) to connect the **S-VIDEO (Y/C) OUTPUT** jack on the recorder to the S-Video input jack (or labeled as Y/C or S-VHS) on the TV.

#### Option 3: Using a Component Video cable

- 1 Use the component video cables (red/blue/green - not supplied) to connect the **Y Pb Pr OUTPUT** jacks on the recorder to the corresponding component video input jacks (or labeled as Y Pb/Cb Pr/Cr or YUV) on the TV.
- 2 If your TV accepts Progressive Scan signal, see the section "GENERAL settings – Progressive Scan" for detailed set up.

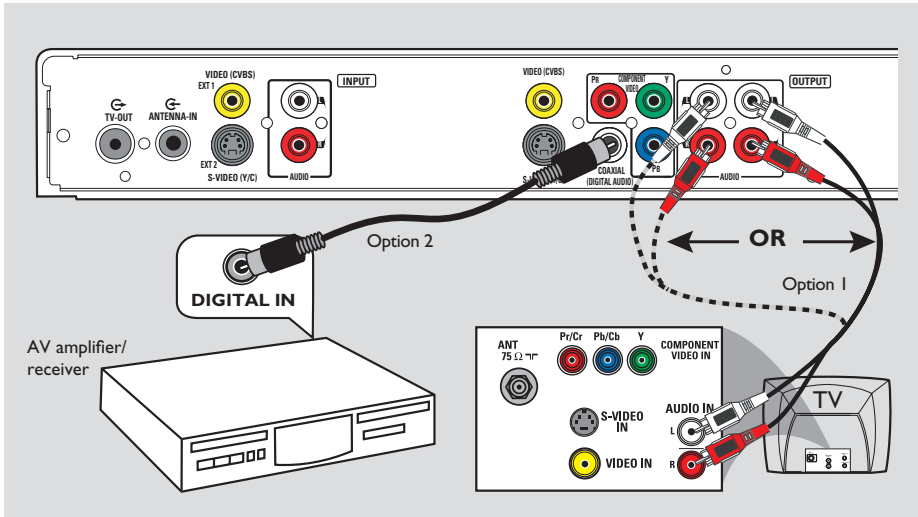
#### IMPORTANT!

**The progressive scan video quality is only available through Y Pb Pr connection and a progressive TV is required. It is strongly advised to complete the recorder installation first, before enabling the progressive scan feature.**

**TIPS:** Before making or changing any connections, make sure that all the devices are disconnected from the power outlet.



## Step 1: Basic Recorder Connections (continued)



### Connecting the audio cables

This connection enables you to listen to the sound.

#### Option 1: Using an audio cable

You can connect the recorder to a two channel stereo system or receiver in order to enjoy the stereo sound system.

- Use the supplied audio cable (red/white plugs) to connect the **AUDIO OUTPUT** jacks to one of the following devices with the same input jacks.
  - a stereo system (for example, TV or mini system.)
  - a receiver with two channel analog stereo.

#### Option 2: Using a coaxial cable

You can connect the recorder to an AV amplifier/receiver with a digital multichannel sound decoder in order to enjoy multichannel surround sound.

- Use a coaxial cable (not supplied). Connect the recorder to the receiver/amplifier from the **COAXIAL (DIGITAL AUDIO)** jack on the recorder to the digital input of the receiver.

Before you start operating, set the digital audio output settings accordingly (see the section “PLAYBACK settings – Digital Audio Output”).

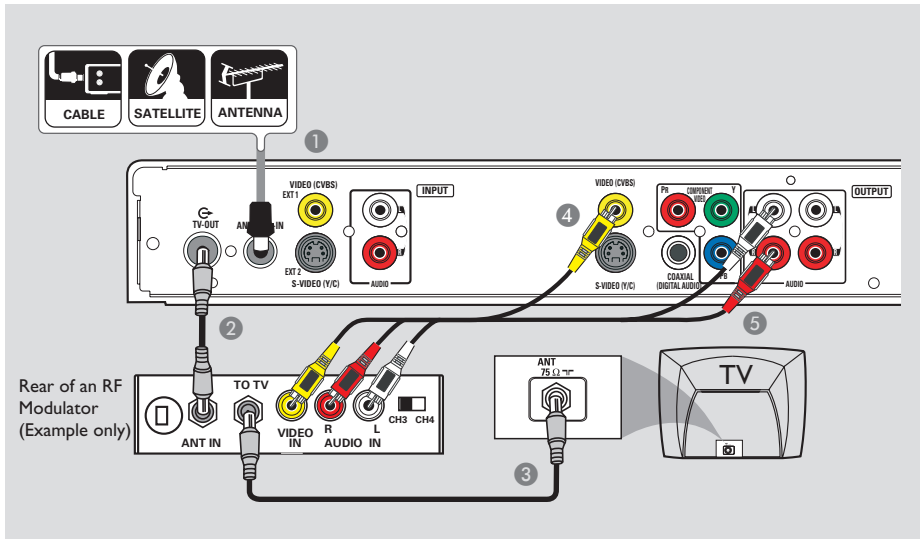
If the audio setting does not match your stereo’s capabilities, the stereo may produce a strong, distorted sound or no sound at all.

#### Helpful Hint:

– Do not connect your TVs audio output jacks to the AUDIO OUTPUT jacks on this recorder, this may cause unwanted noise.

**TIPS:** Before making or changing any connections, make sure that all the devices are disconnected from the power outlet.

## Step 2: Optional Connections



### TV has only an antenna input jack

Use this connection if your TV has only a single Antenna In jack (or labeled as 75 ohm or RF In) and does not have any audio/video jacks.

**For this type of connection, you need an RF modulator in order to view the disc playback.**

- 1 You may have an Antenna/Cable TV signal (or from the Cable Box/Satellite Receiver/VCR) connected to your TV's antenna input jack (VHF/UHF RF IN.) Remove it from the TV and connect it to the **ANTENNA-IN** jack on the recorder.
- 2 Use the supplied RF coaxial cable to connect the **TV-OUT** jack on the recorder to the antenna input jack on the RF modulator.

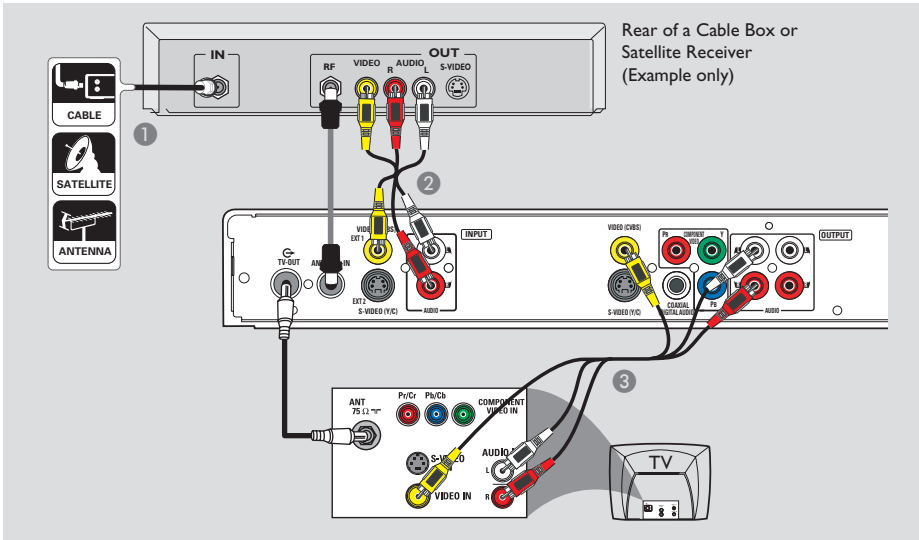
- 3 Use a RF coaxial cable (not supplied) to connect the TO TV jack on the RF modulator to the antenna input jack on your TV.
- 4 Use the supplied AV cables (yellow plug) to connect the **VIDEO (CVBS) - OUTPUT** jack on the recorder to the video input jack (or labeled as A/V In, Video In, Composite or Baseband) on the RF modulator.
- 5 Use the supplied AV cables (red/white plugs) to connect the **AUDIO OUTPUT** jacks on the recorder to the audio input jack (or labeled as AUDIO IN or LINE IN) on the RF modulator.

#### Helpful Hints:

- If you have used the **TV-OUT** jack to connect your recorder to TV, set your TV to channel 3 or 4. If you have used **VIDEO/AUDIO OUTPUT** connection, set the TV to the appropriate video input channel.
- See your electronics retailer for details on RF modulator availability and operations.

**TIPS:** Before making or changing any connections, make sure that all the devices are disconnected from the power outlet.

## Step 2: Optional Connections (continued)



English

### Connecting to a Cable Box or Satellite Receiver

#### Option 1

If your Cable Box/Satellite Receiver only has an antenna output jack (RF OUT or TO TV),

See "Step 1: Basic Recorder Connections – Connecting the antenna cables" for the complete connections to your TV.

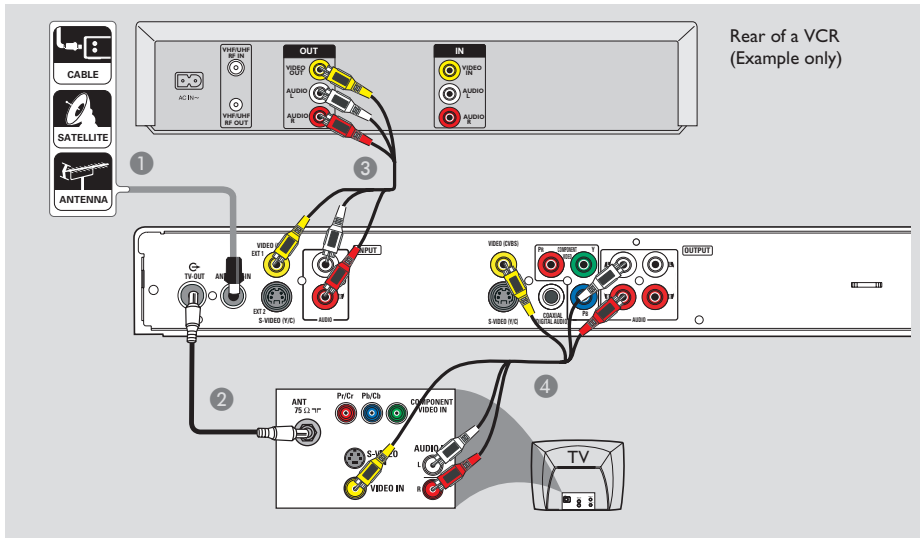
#### Option 2

If your Cable Box/Satellite Receiver has video/audio output jacks,

- 1 Keep the existing antenna connection from the Antenna/Cable TV signal to the input (RF IN) jack on the Cable Box/Satellite Receiver.
- 2 Use the audio/video cables to connect the **VIDEO (CVBS) EXTI /AUDIO INPUT** on the recorder to the matching VIDEO/AUDIO output jacks on the Cable Box/Satellite Receiver.
- 3 Use the audio/video cables to connect the **VIDEO (CVBS) /AUDIO OUTPUT** on the recorder to the matching VIDEO/AUDIO input jacks on the TV.

**TIPS:** Before making or changing any connections, make sure that all the devices are disconnected from the power outlet.

## Step 2: Optional Connections (continued)



### Connecting to a VCR or other similar device

This connection enables you to record from video tape to a DVD±R/±RW and allows the VCR to be used for playback if the recorder is turned off.

**Before you start...**

**Your new recorder can replace the VCR for all your recording needs. Just unplug all the connections from your VCR.**

- 1 Connect the Antenna/Cable TV signal to the **ANTENNA-IN** jack on the recorder.
- 2 Use a RF coaxial cable to connect the **TV-OUT** jack on the recorder to the antenna input jack on your TV (VHF/UHF RF IN.)

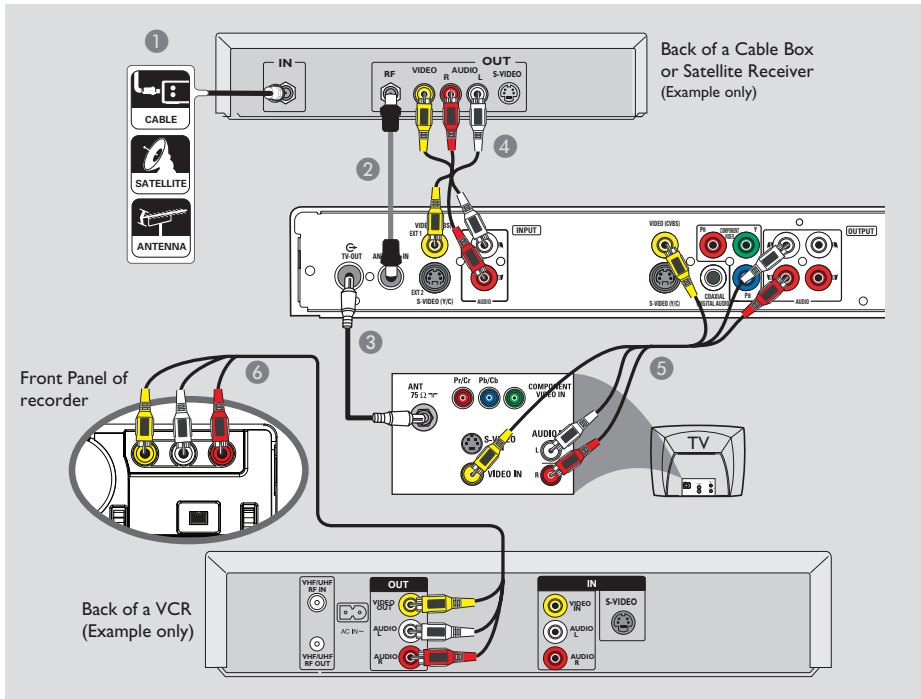
- 3 Use the audio/video cables to connect the **VIDEO (CVBS) EXT/1 / AUDIO INPUT** jacks on the recorder to the matching VIDEO/AUDIO output jacks on the VCR.
- 4 Use the audio/video cables to connect the **VIDEO (CVBS) / AUDIO OUTPUT** jacks on the recorder to the matching VIDEO/AUDIO input jacks on the TV.

*Helpful Hints:*

- Most commercial video cassettes and DVDs are copy-protected and therefore cannot be recorded.
- Connect the recorder directly to the TV. If there is a VCR or an additional device in between, the picture quality may be poor because of the copy protection system built into the recorder.

**TIPS:** Before making or changing any connections, make sure that all the devices are disconnected from the power outlet.

## Step 2: Optional Connections (continued)

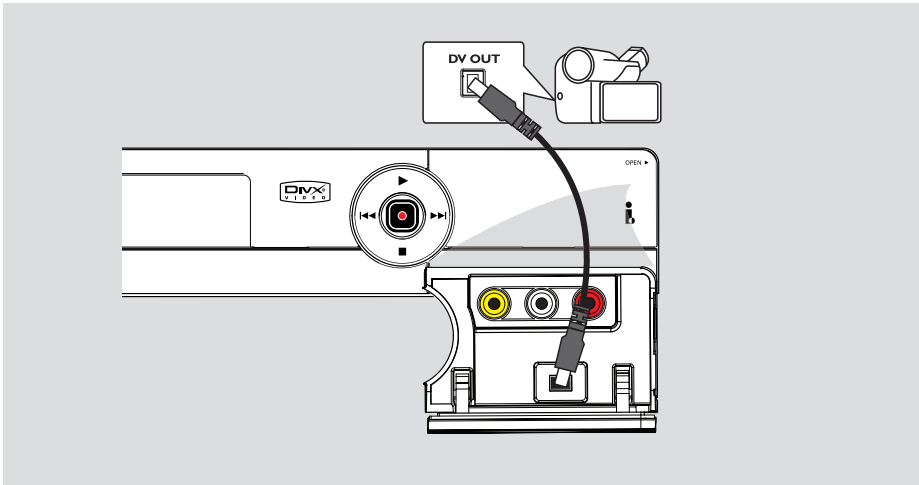


### Connecting to a VCR and Cable Box/Satellite Receiver

- 1 Connect the Antenna/Cable TV signal to the antenna input (RF IN) jack on the Cable Box/ Satellite Receiver.
- 2 Use the supplied RF coaxial cable to connect the **ANTENNA-IN** jack on the recorder to the RF OUT jack on the Cable Box/ Satellite Receiver.
- 3 Use a RF coaxial cable to connect the **TV-OUT** jack on the recorder to the antenna input jack on your TV (VHF/ UHF RF IN.)
- 4 Use the supplied audio/ video cables to connect the **VIDEO (CVBS) EXT I/ AUDIO -INPUT** jacks on the recorder to the matching VIDEO/AUDIO output jacks on the Cable Box/ Satellite Receiver.
- 5 Use the audio/video cables to connect the **VIDEO (CVBS) /AUDIO - OUTPUT** on the recorder to the matching VIDEO/AUDIO input jacks on the TV.
- 6 Use another set of audio/video cables to connect the **CAM I/ L-AUDIO-R** jacks on the front panel of the recorder to the to the matching VIDEO/AUDIO output jacks on the VCR.

**TIPS:** Before making or changing any connections, make sure that all the devices are disconnected from the power outlet.

## Step 2: Optional Connections (continued)



### Connecting a camcorder to the front jacks

You can use the front jacks to copy camcorder recordings. These jacks are located behind the flap on the right hand side and provides convenient connections for a camcorder.

#### Option 1: Using DV IN jack

Use this connection if you have a Digital Video or Digital 8 camcorder. The DV jack conforms to the i.LINK standard. It provides the best picture quality.

- Use an i.LINK 4-pin cable (not supplied) to connect the **DV IN** jack on the DVD recorder to the appropriate DV OUT jack on the camcorder.

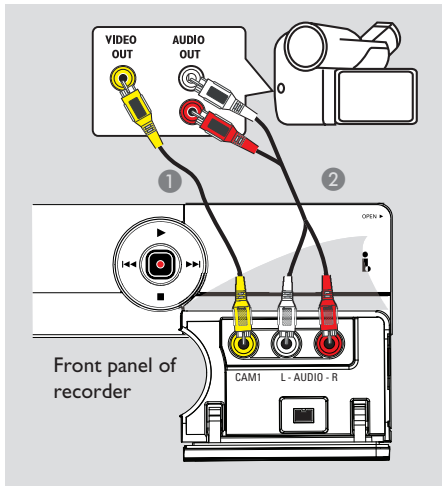
Before you start operating, press **REC SOURCE** on the remote control repeatedly to select 'DV' as the input channel. For recording, see "Recording – RECORD settings".

#### Helpful Hints:

- The DV IN jack does not support a connection to a Personal Computer.
- It is not possible to record from the recorder to your camcorder via the DV IN jack on your recorder.

**TIPS:** Before making or changing any connections, make sure that all the devices are disconnected from the power outlet.

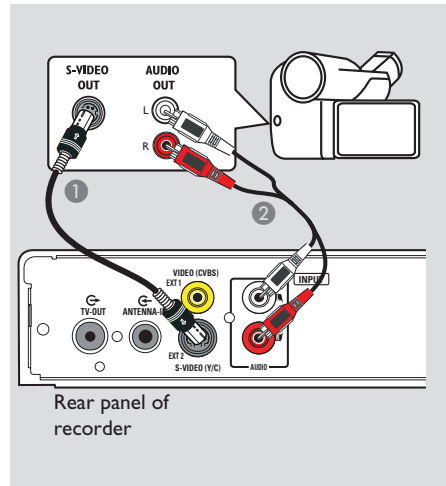
## Step 2: Optional Connections (continued)



### Option 2: Using the VIDEO In jack

Use the CAM1 connection if your camcorder has only a single video output (Composite Video, CVBS.)

- 1 Use a video cable (yellow plug – not supplied.) Connect the **CAM1** jack on the front panel of the recorder to the corresponding Video output jack on the camcorder.
- 2 Use an audio cable (red/white plugs) to connect the **AUDIO L/R** jacks on the front panel of the recorder to the audio output jacks on the camcorder.



### Option 3: Using the S-VIDEO In jack

Use the S-VIDEO connection if you have a Hi8 or S-VHS(C) camcorder. It provides good picture quality.

- 1 Use an S-Video cable (not supplied.) Connect the **S-VIDEO (Y/C) EXT2** jack on the rear panel of the recorder to the corresponding S-VHS output jack on the camcorder.
- 2 Use an audio cable (red/white plugs) to connect the **AUDIO INPUT L/R** jacks on the recorder to the audio output jacks on the camcorder.

Before you start operating, press **REC SOURCE** on the remote control repeatedly to select 'CAM1' as the input channel, depending on your connections. For details, see "Recording – RECORD settings".

**TIPS:** Before making or changing any connections, make sure that all the devices are disconnected from the power outlet.

## Step 3: Installation and Setup

### Before you start...

When you complete the connections and turn on the recorder for the first time, it is advisable that you make several basic settings.

Please see the following pages on using the system setup menu features to program TV channels, menu language and system clock settings. This will optimise the performance of this recorder.

### Finding the correct viewing channel

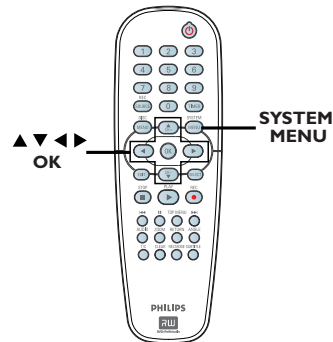
- 1 Press **STANDBY-ON** on the recorder to turn it on.
- 2 Turn on the TV and set it to the correct video-in channel. You should see the blue DVD background screen.
  - Usually this channel is between the lowest and highest channels and may be called FRONT, A/V IN, VIDEO. See your TV's manual for more details.
  - Or, you may go to channel 1 on your TV, then press the Channel down button repeatedly until you see the Video In channel.
  - Or, the TV remote control may have a button or switch that chooses different video modes.
  - Or, set the TV to channel 3 or 4 if you are using a RF modulator.


### Setting your TV channel programs

Before this recorder can start recording any TV channel programs, you need to search for the available TV channels and store them in this recorder.

**Note:** Make sure you have successfully made all the required connections to the recorder, the TV and Satellite Receiver/ Cable Box (if any) and turned them on.

**Tuner settings can only be changed when there is no disc in the disc tray.**



- 1 Press **SYSTEM-MENU** on the remote control.
  - The system menu appears on the TV.
- 2 Use ▲▼ keys to highlight  { **System Menu - Channel Setup** } and press ►.

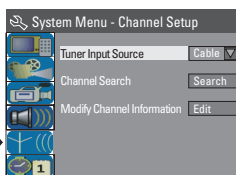
**TIPS:** Press ◀ to go back to previous menu item.  
Press **SYSTEM-MENU** to exit the menu.



## Step 3: Installation and Setup (continued)

### CHANNEL SETUP settings (underlined options are the factory default settings)

#### Tuner Input Source



Set the tuner input source for the recorder.

- 1) Use **▲▼** keys to highlight { **Tuner Input Source** } and press **▶** to access the options:

{ **Cable** } – Select this if the recorder is connected via a cable box/satellite receiver.

{ **Air** } – Select this if the recorder is connected directly to the antenna wall outlet.

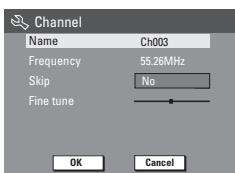
- 2) Press **OK** to confirm your selection and press **◀** to return to the previous screen.

#### Channel Search

This option automatically scans all the receivable analog local TV channels and store them on the recorder.

- 1) Use **▲▼** keys to highlight { **Channel Search - Search** } and press **OK** on the remote control.  
→ The automatic TV channel search will start. This process may take several minutes. Once complete, the total number of channels found will appear on the TV.

#### Modify Channel Information



Modify your preset TV channels.

- 1) Use **▲▼** keys to highlight { **Modify Channel Information - Edit** } and press **▶**.  
→ The modify channel options will be displayed.

- 2) Use **▲▼** keys to select one of the options and press **▶**.

{ **Name** } – Use **numeric keypad 0-9** to enter the TV channel and press **OK** to confirm.

{ **Frequency** } – Adjust the frequency of the channel.  
– Use **◀▶** keys to adjust the frequency. Press **OK** on the remote control to confirm the setting.

{ **Skip** } – Set the channel to be skipped. The skipped channels can only be accessed by pressing the corresponding number button on the remote control.  
– Use **◀▶** keys to select { **Yes** } if you wish to skip this channel.

{ **Fine-tune** } – Fine-tune the TV channel manually if the reception is poor.  
– Use **◀▶** keys to fine-tune the frequency.

- 3) To confirm the changes, select **OK** and press **OK** on the remote control to return to the previous screen.


## Step 3: Installation and Setup (continued)

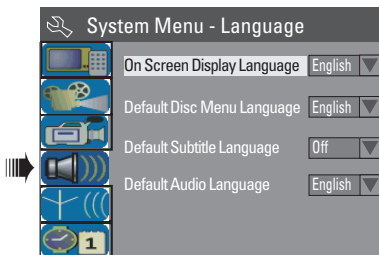
### Setting the language

You can select the language for subtitles and audio for DVD playback. For some DVDs, the subtitle/audio language can only be changed via the DVD disc menu. If the selected language is not available on the disc, the disc's default language will be used instead.

The menu language (on-screen display) for the system will remain as you set it.

**Language settings can only be changed when there is no disc in the disc tray.**


- 1 Press **SYSTEM-MENU**.  
→ The system menu appears.
- 2 Use ▲▼ keys to highlight  { **System Menu - Language** } and press ► to confirm.

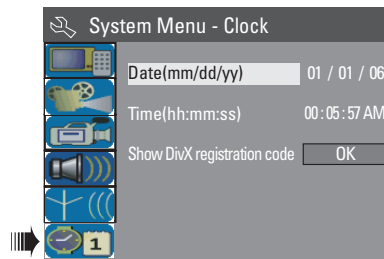


- 3 Use ▲▼ keys to highlight one of the options and press **OK**. See next page for details.
- 4 Use ▲▼ keys to highlight the desired language and press **OK** to confirm.

### Setting the time & date

If the recorder has not set the time and date correctly, set the clock manually by following the steps below.

- 1 Press **SYSTEM-MENU**.  
→ The system menu appears.
- 2 Use ▲▼ keys to select  { **System Menu - Clock** } and press ► to confirm.



- 3 Use ▲▼ keys to highlight one of the options and press **OK** to access the options. See next page for details.
- If the recorder has not set the time and date correctly, you can further adjust the clock settings. See next page for details.
- 4 Once complete, press ◀ to return to the previous menu.

**TIPS:** Press ◀ to go back to previous menu item.  
Press **SYSTEM-MENU** to exit the menu.

## Step 3: Installation and Setup (continued)

### LANGUAGE settings

<b>On Screen Display Language</b>	Select the menu language for this recorder's on-screen display.
<b>Default Disc Menu Language</b>	Select the preferred language of the Disc Menu.
<b>Default Subtitle Language</b>	Select the preferred subtitle language.
<b>Default Audio Language</b>	Select the preferred playback language.

### CLOCK settings

<b>Date (mm/dd/yy)</b>	Use ▲▼ keys to change the number and use ◀▶ keys to select different entry fields. Press <b>OK</b> to confirm.  <i>OR</i> , enter the numbers using the <b>numeric keypad 0-9</b> on the remote control.
<b>Time (hh:mm:ss)</b>	Use ▲▼ keys to change the number and use ◀▶ keys to select different entry fields. Press <b>OK</b> to confirm.  <i>OR</i> , enter the numbers using the <b>numeric keypad 0-9</b> on the remote control.

The basic installation is now complete. This recorder is ready for use!

# Recording

## Discs for recording

Several different formats of DVD recordable discs can be used on this recorder:



### DVD±RW (DVD Rewritable)

– Discs that are rewritable can be used for multiple recordings once existing data is erased.



### DVD±R (DVD Recordable)

– Discs can only be used for a single recording. Each new recording is always added at the end of all previous recordings as existing recordings cannot be overwritten.

– Editing can be made on any DVD±R discs as long as they have not been finalized. It is also possible to create additional chapter markers.

– To play a DVD±R on other DVD player, it must be finalized. (See “Playing your recordings (DVD±R) on other DVD players”.) After finalizing the DVD±R, no more data can be added to the disc.

## Supported disc types and media speeds

Disc	Media speeds
DVD+R	1x - 16x
DVD+RW	2.4x - 4x
DVD-R	1x - 16x
DVD-RW	2x - 4x


## IMPORTANT!

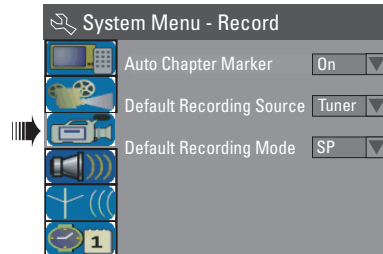
### Unrecordable pictures

Television programs, films, video tapes, discs, and other materials may be copyrighted and therefore cannot be recorded on this recorder.

## Recording settings

The default recording settings allow you to set the auto chapter markers, preferred recording input source and recording mode. Any changes made using the remote control will only apply to the current recording settings, the default recording settings will remain unchanged for the next recording.

- 1 Press **SYSTEM-MENU** on the remote control.  
→ The system menu appears on the TV.
- 2 Use ▲▼ keys to select  { **System Menu - Record** } and press ► to access its options.



- 3 Use ▲▼ keys to select the setting you wish to change and press **OK** to confirm.  
→ Instructions and explanation of the options are provided in the following pages.
- 4 To exit, press **SYSTEM-MENU**.

**TIPS:** Press ◀ to go back to previous menu item.  
Press **SYSTEM-MENU** to exit the menu.

## Recording (continued)

### **RECORD settings** (underlined options are the factory default settings)

#### **Auto Chapter Markers**

Automatically insert chapter markers within a title during recording. This helps you to access specific points on the recorded disc as you would choose a chapter on other DVDs.

- 1) Use **▲▼** keys to select one of the options:
  - { **Off** } – Disable this feature.
  - { **On** } – A chapter marker will automatically be inserted within the title during recording. The interval depends on the recording mode selected.
- 2) Press **OK** to confirm your selection.

#### **Default Recording Source**

Define your preferred source of recording.

**Note:** To change the current recording source without changing the default setting, you can press **REC SOURCE** button on the remote control.

- 1) Use **▲▼** keys to select one of the options:
  - { **Tuner** } – Input source from TV programs.
  - { **CAMI** } – Input source from the device connected to the CAM1 and AUDIO L/R jacks on the front panel.
  - { **EXT 1** } – Input source from the device connected to the VIDEO (CVBS) EXT1 and AUDIO L/R jacks on the rear panel.
  - { **EXT 2** } – Input source from the device connected to the S-VIDEO (Y/C) EXT2 and AUDIO L/R jacks on the rear panel.
  - { **DV** } – Input source from the device connected to DV IN jack on the front panel.
- 2) Press **OK** to confirm your selection.

## Recording (continued)

### RECORD settings

#### Default Recording Mode

The recording mode defines the picture quality of recordings and the maximum recording time for a disc. This function can also be accessed via the **REC MODE** key on the remote control.

- 1) Use **▲▼** keys to select one of the following recording modes.

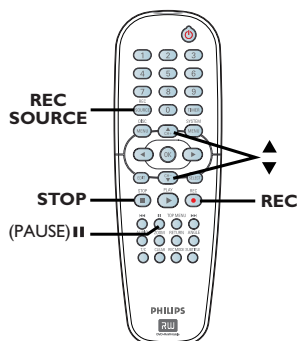
Record Mode	Picture Quality	Maximum Recording Time per Disc
HQ	High quality	1 hour
SP	DVD quality-Standard Play	2 hours
EP	VHS quality-Extended Play	4 hours
SLP	VHS quality-Super Long Play	6 hours

- 2) Press **OK** to confirm your selection.

## Recording (continued)

### Manual recording

Use this feature to start recording immediately (e.g. to record a TV show already in progress.)



- 1 Turn on the TV power. Select the correct Video In channel at the TV.
- 2 Insert a DVD±R/±RW into the recorder.
- 3 Press **REC SOURCE** on the remote control to select { **Tuner** }, then use ▲▼ keys to select the TV channel you wish to record.
- To record from an external device, press **REC SOURCE** repeatedly to select the correct input channel that matches the connected jack on the recorder.

#### { CAMI }

Input source from the device connected to the CAM1 and AUDIO L/R jacks on the front panel.

#### { DV }

Input source from the device connected to DV IN jack on the front panel.

#### { EXT 1 }

Input source from the device connected to the VIDEO (CVBS) EXT1 and AUDIO L/R INPUT jacks on the rear panel.

#### { EXT 2 }

Input source from the device connected to the S-VIDEO (Y/C) EXT2 and AUDIO L/R INPUT jacks on the rear panel.

- 4 Press **REC ●** to start recording.  
→ The recording will automatically start after the last recording on the DVD±R/±RW.
- 5 To stop the recording, press **STOP ■**.

### Pausing a recording

- 1 During a recording, press **PAUSE II**.  
→ You can use this function to avoid recording commercials.
- 2 To resume recording, press **REC ●**.

### One Touch Recording - automatic turn-off

- 1 Follow the steps 1~3 of "Manual Recording".
- 2 Press **REC ●** repeatedly to toggle between OTR 30, 60 or 90- minutes recording options.  
→ The recorder will stop recording at the designated end time and turn off automatically.
- Press **STOP ■** if you wish to stop the recording.

**TIPS:** Ensure that there is enough space on the DVD±R/±RW before recording. Before you playback the DVD±R on another player, finalize the disc. See "Playing your recordings (DVD±R) on other DVD players".

## Recording (continued)

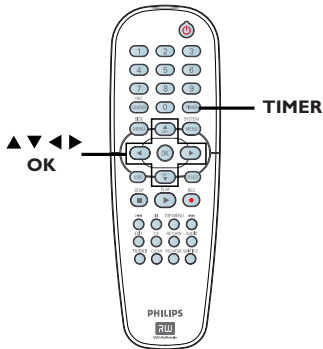
### About timer recording

Use 'Timer Recording' to automatically start and stop a recording at a later date/ time. The recorder will tune to the right program channel and begin recording at the specified time.

With this recorder, you can pre-program up to **20 recordings**.

#### To make a timer recording, your recorder needs to know:

- The date you want to make the recording.
- The recording input source.
- The start and stop time of the recording.
- The recording mode, see the section "RECORD settings – Default Recording Mode" in this chapter.



### Timer recording (manually)

- 1 Turn on the TV power. Select the correct Video In channel at the TV.
- 2 Press **TIMER** on the remote control.
  - The timer schedule list appears.

Timer Schedule

	Source	RecMode	Date	Start	End
1					
2					
3					
4					
5					
6					

- 3 Press **OK** on the remote control.
  - The VCR Plus+® System menu appears.

VCR Plus+ System

Enter the PlusCode programming number for the show you wish to record or select CANCEL for manual timer recording. To go back to timer schedule, press [RETURN].

CONFIRM CANCEL

- 4 Select **CANCEL** in the menu and press **OK**.
  - The timer editor menu appears.

Timer Editor

Source Ch003

Rec Mode SP

Mode Once

Date 01 / 31 / 06

Start 10 : 33 PM

End 11: 03 PM

OK Cancel

- 5 Use **▲▼** keys to select an entry in the menu and press **▶** to enter its options.

**TIPS:** Ensure that there is enough space on the DVD±R/±RW before recording. Before you playback the DVD±R on another player, finalize the disc. See "Playing your recordings (DVD±R) on other DVD players".



## Recording (continued)

### { Source }

– Use ▲▼ keys to select the recording input source.

### { Rec Mode }

– Use ▲▼ keys to select your option.  
See “RECORD settings – Default Recording Mode”.

### { Mode }

– Use ▲▼ keys to select { **Once** }, { **Daily** }, { **Weekly** }, { **Mon-Fri** } (Monday to Friday, ) { **Mon-Sat** } (Monday to Saturday) or { **Weekend** } (Saturday and Sunday) recordings.

### { Date }

– Use ▲▼ keys or the **numeric keypad 0-9** to enter the date for recording.

### { Start }

– Use ▲▼ keys or the **numeric keypad 0-9** to enter the start time of recording.

### { End }

– Use ▲▼ keys or the **numeric keypad 0-9** to enter the end time of recording.

- 6 Select **OK** in the menu and press **OK**.  
→ The system will store the timer entry and return to the timer schedule list.
- To cancel the above timer setting, select **CANCEL** in the menu and press **OK**.
- 7 Press **TIMER** to exit the menu.
- 8 Insert a DVD±R/+RW into the recorder.

- 9 Press **STANDBY-ON** to turn off the recorder to standby mode.  
→ If the recorder is not in standby mode, a warning message will appear three minutes before the recording starts.  
→ The ‘**TIMER**’ icon will light up on the display panel if a timer recording is set.

### Helpful Hint:

– Set the timer recording one minute ahead of the program’s start time. This helps ensure the entire program is recorded as the disc requires about 30 seconds to prepare for recording.

### Setting a timer recording from an external Cable Box/Satellite Receiver

If you have a Satellite Receiver/Cable Box connected to this recorder via the S-VIDEO (Y/C) EXT2 or VIDEO (CVBS) follow the steps described below to program the recordings.

- 1 Select the channel you want to record at the Satellite Receiver/ Cable Box.
- 2 Program the recording with the required information. Follow the steps 1~9 of “Timer Recording (manually)”.

### { Source }

– Use ▲▼ keys to select { **EXT 2** } or { **EXT 1** } as the input channel and press **OK** to confirm.

- 3 Leave the Satellite Receiver/Cable Box on for the recording.

**TIPS:** Ensure that there is enough space on the DVD±R/±RW before recording. Before you playback the DVD±R on another player, finalize the disc. See “Playing your recordings (DVD±R) on other DVD players”.

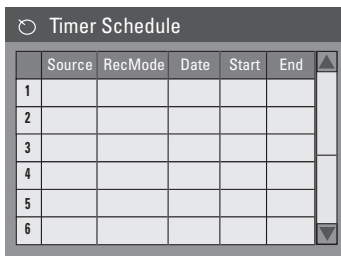
## Recording (continued)

### Timer recording (VCR Plus+® System)

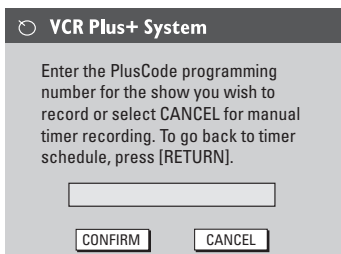
This is a simple programming system for recorders. To use it, enter the PlusCode programming number associated with your television program. You can find this number in your TV listings magazine.

All the information needed by the recorder for programming is contained in the programming number.

- 1 Turn on the TV power. Select the correct Video In channel at the TV.
- 2 Press **TIMER** on the remote control.
  - The timer schedule list appears.



- 3 Press **OK** to confirm.
  - Or, press **▼** key to go to the next available empty slot and press **OK**.
  - The VCR Plus+® System menu appears.



- 4 Use the **numeric keypad 0-9** to enter the PlusCode programming number for the show you wish to record. (e.g. : 5-312-4 or 5,312 4, key in '53124'.)

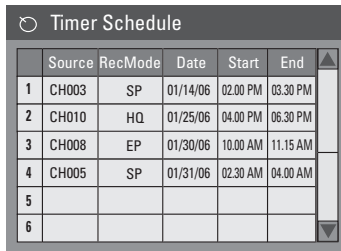
- To clear the VCR Plus+® programming number, press **CLEAR** on the remote control.
- To cancel the VCR Plus+® programming, use **▲▼** keys to select **CANCEL** in the menu and press **OK**.
- 5 To confirm your entry, select **CONFIRM** in the menu and press **OK**.
  - The system will store the timer entry and return to the timer editor menu.
- If the channel number of the TV channel has not been assigned to the programming number, you will have to manually key in the channel number that is assigned to the VCR Plus+® code. Follow the instructions on the TV.
- 6 Press **TIMER** to exit the menu.
- 7 Insert a DVD±R/±RW into the recorder.
- 8 Press **STANDBY-ON** to turn off the recorder to standby mode.
  - If the recorder is not in standby mode, a warning message will appear three minutes before the recording starts.
  - The 'TIMER' icon will light up on the display panel if a timer recording is set.

**TIPS:** Ensure that there is enough space on the DVD±R/±RW before recording. Before you playback the DVD±R on another player, finalize the disc. See "Playing your recordings (DVD±R) on other DVD players".

## Recording (continued)

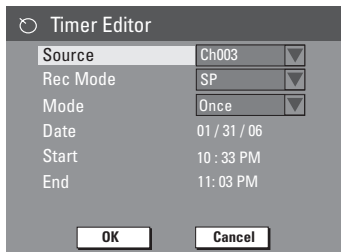
### Changing/ Deleting a timer recording

- 1 Turn on the TV power. Select the correct Video In channel at the TV.
- 2 Press **TIMER** on the remote control.  
→ The timer schedule list appears.



	Source	RecMode	Date	Start	End
1	CH003	SP	01/14/06	02.00 PM	03.30 PM
2	CH010	HQ	01/25/06	04.00 PM	06.30 PM
3	CH008	EP	01/30/06	10.00 AM	11.15 AM
4	CH005	SP	01/31/06	02.30 AM	04.00 AM
5					
6					

- 3 Use **▲▼** keys to select a timer program which you want to change/ delete.
- 4 To delete the timer entry, press **CLEAR** on the remote control.
- 5 To change the timer schedule, press **OK** to enter the timer editor menu of the selected timer program.



Timer Editor	
Source	Ch003
Rec Mode	SP
Mode	Once
Date	01 / 31 / 06
Start	10 : 33 PM
End	11: 03 PM

- 6 Select the entry field and make the necessary changes.
- 7 Once complete, select  in the menu and press **OK** to save the changes.
- 8 Press **TIMER** to exit the menu.

### Watching another TV channel during recording

You can watch another TV channel while recording is in progress by using the TV's remote control to change the TV channels.

*Helpful hint:*

– Remember to turn the TV back to its video input channel if you want to watch the TV channel through the recorder or playback the recorded disc.

**TIPS:** Ensure that there is enough space on the DVD±R/±RW before recording. Before you playback the DVD±R on another player, finalize the disc. See "Playing your recordings (DVD±R) on other DVD players".

## Editing/Finalizing Recording

### About disc editing

This recorder offers various disc editing options for various disc types. You can change the disc content and settings of a recorded DVD±R/±RW from the disc editing menu. The edited contents may not be available when you play the disc on another DVD player.

The displayed options in the disc editing menu differ depending on the type of disc.

#### { Play }

Start playing from the beginning of the disc.

#### { Rename Disc }

Change the name of the disc.

#### { Erase Disc } - DVD±RW only

Erase all the recordings on the disc.

#### { Record New Title }

Start recording from the last empty title on the disc.

#### { Overwrite Disc } - DVD±RW only

Start a new recording from the beginning of the disc, all the recorded content will be overwritten.

#### { Make Compatible } - DVD±RW only

To ensure the edited changes remain when the disc is played back on another DVD player. (eg., hidden chapters to remain hidden.)

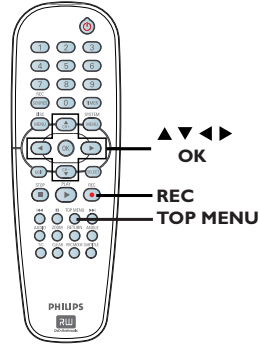
#### { Lock/Unlock Disc } - DVD±RW only

Lock or unlock a disc to prevent accidental erasure or changes being made.

#### { Finalize Disc } - DVD±R only

Finalize the disc to enable playback on other DVD players. Further recording and editing to the disc are not allowed. It is not possible to unfinalize the disc.

### Accessing disc editing menu



- 1 Insert a recorded DVD±R/+RW into the recorder.  
→ The Index Picture screen appears on the TV.
- 2 Press **TOP MENU** on the remote control.  
→ The disc editing menu appears. The available editing options are different for DVD±R and DVD±RW discs.



- 3 Use ▲▼ keys to access different options and **OK** to select.  
→ Instructions and explanation of the options are provided in the following pages.
- 4 To exit, press **TOP MENU** to go back to the disc Index Picture screen.

**TIPS:** No further recording and editing can be carried out on a full or finalized DVD±R. Press ◀ to go back to the previous menu. Press **DISC MENU** to exit.

## Editing/Finalizing Recording (continued)

### Rename disc

The original disc name is generated automatically by the recorder. You can change the disc name by following the steps below.

- 1 Press **TOP MENU**, then use **▲▼** keys to select { **Rename Disc** } and press **OK**.  
→ The keyboard screen appears.
- 2 Use **◀▶▲▼** keys to highlight a character on the keyboard and press **OK** to select.  
→ The maximum input is up to 9 characters.
- You can use the following keys on the keyboard screen to edit your input:
  - BkSp** : to remove a character to the left of the cursor.
  - Delete** : to remove the character to the right of the cursor.
  - Space** : to create a space between characters.
  - Caps** : to toggle between upper and lower case characters.
  - Clear** : to clear the entry field completely.
- 3 To confirm your entry, select **OK** on the keyboard and press **OK**.  
→ The info panel is now updated.
- To cancel the changes, select **EXIT** on the keyboard and press **OK**.

### Erase disc (DVD±RW only)

This erases the content of the DVD±RW including those that was not recorded on this recorder. Once the existing content is erased, it can be used again for recording.

- 1 Press **TOP MENU**, then use **▲▼** keys to select { **Erase Disc** } and press **OK**.  
→ A warning message will appear.
- 2 Select **YES** in the menu to proceed or **NO** to abort. Press **OK** to confirm.

### Record new title

This function allows you to start a new recording at the remaining empty space on the DVD±R/±RW.

- 1 Press **TOP MENU**, then use **▲▼** keys to select { **Record New Title** } and press **OK**.
- 2 Select the source you want to record from and press **REC ●** to start recording.

### Overwrite disc (DVD±RW only)

This function allows you to start a new recording from the beginning of a DVD±RW regardless of the contents of the disc.

- 1 Press **TOP MENU**, then use **▲▼** keys to select { **Overwrite disc** } and press **OK**.
- 2 Select the source you want to record from and press **REC ●** to start recording.

**TIPS:** No further recording and editing can be carried out on a full or finalized DVD±R. Press **◀** to go back to the previous menu. Press **DISC MENU** to exit.

## Editing/Finalizing Recording (continued)

### Make compatible (DVD±RW only)

The edited DVD±RW may still display the original titles or hidden scenes when played back on other DVD players. This function ensures that the edited changes of the DVD±RW remain when played back on other players.

- 1 Press **TOP MENU**, then use **▲▼** keys to select { **Make Compatible** }. Press **OK** to confirm.

#### Helpful Hint:

– If the option {Compatible} is not available for selection, it means that the disc is already compatible.

### Lock/Unlock disc (DVD±RW only)

You can choose to protect the recorded DVD±RW in order to prevent accidental loss of recordings.

- 1 Press **TOP MENU**, then use **▲▼** keys to select { **Lock Disc** }. Press **OK** to confirm.
  - The disc is locked for this DVD recorder only.
  - When the disc is locked, the option in the disc editing menu will change to { **Unlock Disc** }.
- 2 If you want to overwrite or edit on the protected disc, select { **Unlock Disc** }.

### Playing your recordings (DVD±R) on other DVD players

It is necessary to finalize a DVD±R disc before you can play it on any other DVD player. Otherwise, the DVD±R will only playback on this recorder.

**After a DVD±R disc has been finalized, no further recordings or editing can be made to it. Make sure that you have completed all the recordings and editing before finalizing the disc.**

- 1 Press **TOP MENU**, then use **▲▼** keys to select { **Finalize Disc** }. Press **OK** to confirm.
  - A warning message will appear.
- 2 Select  in the menu and press **OK** to start the process.
  - Finalization will take a few minutes. Do not try to open the disc tray or turn the power off as this may render the disc unusable.
- 3 Select  to abort.

**TIPS:** No further recording and editing can be carried out on a full or finalized DVD±R. Press **◀** to go back to the previous menu. Press **DISC MENU** to exit.

## Editing/Finalizing Recording (continued)

### About title editing

You can change the individual title information or delete a title (recording) on a recorded DVD±R/±RW. If a DVD±R has been finalized, it cannot be edited.

The displayed options in the title editing menu differ depending on the type of disc.

#### { Play Title }

Start playing a recording.

#### { Edit Title }

Access video editing menu.

#### { Rename Title }

Change the name of the recording.

#### { Erase Title } - DVD±RW only

Delete the title (recording.)

#### { Overwrite Title } - DVD±RW only

Start a new recording, the existing title (recording) will be overwritten.

#### { Overwrite Disc } - DVD±RW only

Overwrite from existing selected title onwards to the end of the disc.

#### { Append Title }

Insert a new recording to the last existing recording.

### Accessing title editing menu

- 1 Insert a recorded DVD±R/±RW into the recorder.  
→ The Index Picture screen appears on the TV.
- 2 During playback, press **DISC MENU** to access the Index Picture screen.
- 2 Use ▲▼ keys to highlight a title (recording), and press ►.  
→ The title editing menu appears.



- 3 Use ▲▼ keys to access different options and **OK** to select.  
→ Instructions and explanation of the options are provided in the following pages.
- 4 To exit, press ◀.

### Editing video

This feature allows access to the video editing menu. See the chapter “Editing/Finalizing Recording – About video editing” for more information.

- In title editing menu, use ▲▼ keys to select { **Edit Title** } and press **OK**.  
→ The video editing menu appears.  
→ The recorder will play the selected title.

**TIPS:** No further recording and editing can be carried out on a full or finalized DVD±R. Press ◀ to go back to the previous menu. Press **DISC MENU** to exit.

## Editing/Finalizing Recording (continued)

### Rename title

The original title name is generated automatically by the recorder. You can give a new name to the title by following the steps below.

- 1 In title editing menu, use ▲▼ keys to select { **Rename Title** } and press **OK**.  
→ The keyboard screen appears.
- 2 Use ◀▶ ▲▼ keys to highlight a character and press **OK** to select.  
→ The maximum input is up to 9 characters.

- You can use the following keys on the keyboard screen to edit your input:

: to remove a character to the left of the cursor.

: to remove the character to the right of the cursor.

: to create a space between characters.

: to toggle between upper and lower case characters.

: to clear the entry field completely.

- 3 To confirm your entry, select  on the keyboard and press **OK**.  
→ The info panel is now updated.
- To cancel the changes, select  on the keyboard and press **OK**.

### Erase title (DVD±RW only)

You can delete a specific title (recording) from the disc.

- 1 In title editing menu, use ▲▼ keys to select { **Erase Title** } and press **OK**.  
→ A warning message will appear.
- 2 Select  in the menu to proceed or  to abort, then press **OK** to confirm.

### Overwrite title (DVD±RW only)

This function allows you to record a new title from the beginning of the current title in the DVD±RW. The other titles will not be affected.

- 1 In title editing menu, use ▲▼ keys to select { **Overwrite Title** } and press **OK**.
- 2 Select the source you want to record from and press **REC ●** to start recording.

### Overwrite from the selected title

You can select to overwrite only the recordings from the selected title to the end of the disc.

- 1 In video editing menu, use ▲▼ keys to select { **Overwrite Disc** } and press **OK** to delete.

### Append recording

This function allows you to append recording to the last existing title.

- 1 In title editing menu, use ▲▼ keys to select { **Append Title** } and press **OK**.
- 2 Press **REC SOURCE** to select the input channel to append.
- 3 Press **REC ●** to start append recording.
- 4 To stop append recording, press **STOP ■**.

**TIPS:** No further recording and editing can be carried out on a full or finalized DVD±R. Press ◀ to go back to the previous menu. Press **DISC MENU** to exit.



## Editing/Finalizing Recording (continued)

### About video editing

After a recording has been made, this recorder allows you to edit the video content. You can add/delete chapter markers, hide unwanted scenes, change the picture in the index picture screen and split a title (recording) into two.

When you playback a recording in video edit mode, the entire recording will be played back including the hidden scenes.

The functions available in the disc editing menu are:

#### { Title }

Select a title (recording) to play.

#### { Chapter }

Select a chapter within the selected title.

#### { Chapter Marker }

Insert a chapter marker in the recording or erase a chapter marker to combine two chapters.

#### { Hide Chapter }

Hide the unwanted scene in the recording.

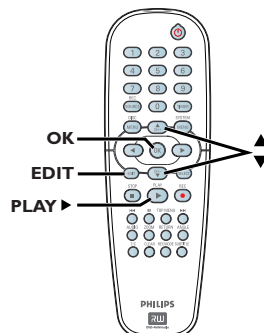
#### { Index Picture }

Select a scene in the recording as the index picture screen.

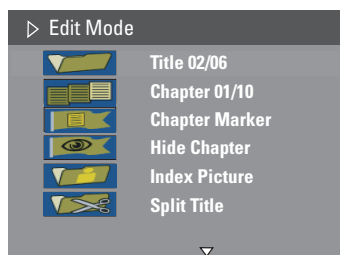
#### { Split Title } - DVD±RW only

Divide the recording into two under separate title.

### Accessing video editing menu



- 1 Insert a recorded DVD±R/±RW into the recorder.  
→ The Index Picture screen appears on the TV.
- 2 Use ▲▼ keys to select a title (recording.)
- 3 Press **PLAY** ► to start playback.
- 4 Press **EDIT** on the remote control.  
→ The video editing menu appears.




- 5 Use ▲▼ keys to access different options and press **OK** to select.  
→ Instructions and explanation of the options are provided in the following pages.
- 6 To exit, press **EDIT**.

**TIPS:** No further recording and editing can be carried out on a full or finalized DVD±R. Press ◀ to go back to the previous menu.

## Editing/Finalizing Recording (continued)


### Selecting a title

This option shows the current title and the total number of titles on the disc.

- 1 During playback, press **EDIT** to display the video editing menu. Use **▲▼** keys to select  { **Title** } and press **OK**.
- 2 Use the **numeric keypad 0-9** to key in a title and press **OK**.  
→ The recorder will play the selected title.

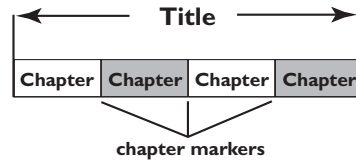
### Selecting a chapter


This option shows the current chapter and the total number of chapters in the title.

- 1 During playback, press **EDIT** to display the video editing menu. Use **▲▼** keys to select  { **Chapter** } and press **OK**.
- 2 Use the **numeric keypad 0-9** to key in the chapter and press **OK**.  
→ The recorder will play the selected chapter.

### Creating chapter marker

You can create a chapter by inserting chapter markers at any point within a title during playback. This will allow you to access a specific point in the recording easily or set a chapter you wish to hide.




- 1 During playback, press **EDIT** to display the video editing menu. Use **▲▼** keys to select  { **Chapter Marker** } and press **OK**.
- 2 Use **▲▼** keys to select one of the options and press **OK** to confirm.
  - { **Insert Marker** }
  - Select this to insert a new chapter marker at the current point of playback.
  - { **Delete Marker** }
  - Select this to delete the current chapter marker (it refers to the closest marker before the current point of playback.)
  - { **Delete All Markers** }
  - Select this to delete all the chapter markers in the current title.

**TIPS:** No further recording and editing can be carried out on a full or finalized DVD±R.  
Press **◀** to go back to the previous menu.

## Editing/Finalizing Recording (continued)

### Hiding an unwanted chapter


You can choose to hide certain scenes from playback (e.g. skipping commercials) or make it visible again.

- 1 Create a chapter marker at the start of the scene you want to hide. ( See previous page on “Insert Chapter Marker”.)
  - 2 Select the chapter you want to hide and start playback. ( See previous page on “Selecting a chapter”.)
  - 3 During playback, press **EDIT** to display the video editing menu. Use ▲▼ keys to select  { **Hide Chapter** } and press **OK**.  
→ The current chapter will be hidden.
- If the video editing menu does not show, press **EDIT** on the remote control.

### To unhide a chapter


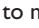

- 1 Press **EDIT** on the remote control during playback.  
→ The video editing menu appears.  
→ While in editing mode, the hidden chapter/chapters will be played back.
- 2 Wait for the chapter you want to unhide to occur or use ◀▶▶▶ keys on the remote control to make a fast search.
- 3 Use ▲▼ keys to select { **Unhide Chapter** } and press **OK**.  
→ The current chapter will be visible during playback.

### Helpful Hints:

- All the hidden chapters will be played back while in video editing mode.
- To locate a specific frame during playback, press **PAUSE**  repeatedly to forward search to the frame that you want.


### Changing Index Picture

The index picture is the picture of the title you will see when the recorder loads up the Index menu. Normally, the first frame of a recording is shown as the title index picture.

- 1 During playback, use ◀▶ keys on the remote control to search for the scene to use, then press **PAUSE**  .  
→ Press **PAUSE**  again to move forward to next pause scene.
- 2 Press **EDIT** to display the video editing menu. Use ▲▼ keys to select  { **Index Picture** } and press **OK** to select the current scene as the index picture for the title.

### Splitting a title (DVD±RW only)

You can divide the current title into two new titles. Each of these titles is characterized by its own index picture.  
**Warning!** Once a title is divided, the process cannot be reversed.

- During playback, press **EDIT** to display the video editing menu. Use ▲▼ keys to select  { **Split Title** } and press **OK** to divide the title at the current playback position.  
→ A new title will be shown at the Index Picture screen.

**TIPS:** No further recording and editing can be carried out on a full or finalized DVD±R. Press ◀ to go back to the previous menu.

## Playback

### Playable discs

Using this recorder, you can play and record on the following discs:

#### Recording and Playback

##### DVD±RW

(DVD Rewritable); can be recorded on over and over again.



##### DVD±R

(DVD Recordable); can be recorded only once.



#### Playback only:

**DVD Video** (Digital Versatile Disc)



**CD-RW** (CD-Rewritable)  
Audio/ MP3/ JPEG contents



**CD-R** (CD-Recordable)  
Audio/ MP3/ JPEG contents



**Audio CD** (Compact Disc Digital Audio)



**MP3-Disc**



**Video CD**  
(Formats 1.0, 1.1, 2.0)



**Super Video CD**



**DivX Disc**

(DivX 3.11, 4.x, 5.x, 6.x)



### IMPORTANT!

- If the inhibit icon (**Error**) appears on the TV screen when a button is pressed, it means the function is not available on the current disc or at the current time.
- DVD discs and players are designed with regional restrictions. Before playing a disc, make sure the disc is for the same region as your player.
- Do not push on the disc tray or put any objects other than discs on the disc tray. It may cause the disc player to malfunction.

### Inserting a disc

- 1 Press **STANDBY-ON** to turn on the recorder.
- 2 Press **OPEN/CLOSE ▲** on the front of the recorder.  
→ The disc tray opens.
- 3 Carefully place the disc into the tray with the label facing up, then press **OPEN/CLOSE ▲**.  
→ Make sure the disc label is facing up. For double-sided discs, load the side which you want to play facing up.
- 4 Turn on the TV power. Select the correct Video In channel at the TV (See “Step 3: Installation and Setup – Finding the correct viewing channel”).
- 5 Playback will start automatically or a dialog will appear on the TV (see next page.)

**TIPS:** Some discs cannot be played on this recorder due to the configuration and characteristics of the disc, or due to the condition of recording and authoring software.

### Starting disc playback

- Playback will begin automatically. If the disc has its own menu this will be loaded, otherwise the recorder will launch an index screen.
- If the pin code entry dialog appears on the TV, this means that the parental control was activated for the inserted disc (See the chapter “DVD System Menu Options – PLAYBACK settings”).  
→ Use the **numeric keypad 0-9** on the remote control to enter your pin code (password.)
- For more playback features, see the chapter “Additional Playback Features”.

### Playing a DVD video disc

The DVD disc is usually formatted with a disc menu. You may have to make your selection (e.g., subtitle or audio language) within the disc menu.

- 1 Insert a DVD disc.

#### If the disc menu appears on the TV

- Use **numeric keypad 0-9** to input your selection or use ◀▶▲▼ keys to select a play option and press **OK** to start playback.

#### To select the previous or next chapter/title marker

- During playback, press **T/C** on the remote control to access the T/C menu. Then use ▲▼ keys to select { **Title** } or { **Chapter** } and input your title/chapter number using the **numeric keypad 0-9**.
- 2 To stop playback, press **STOP ■**.

### Playing a (Super) Video CD

(Super) Video CDs may feature ‘PBC’ (Play Back Control.) This allows you to play the video CDs interactively, following the menu on the display.

- 1 Insert a (Super) Video CD.

#### If the ‘PBC’ is on, the disc index menu will appear on the TV

- 2 Use **numeric keypad 0-9** to input your selection or to select a play option.
  - Press **RETURN** on the remote control to return to the previous menu.
  - To turn on/off the Playback Control mode, press **T/C** on the remote control during playback to access the T/C menu. Then use ▲▼ keys to select { **PBC On** } or { **PBC Off** }.
- 3 To stop playback, press **STOP ■**.

### Playing an audio CD

- 1 Insert an audio CD.
  - Playback starts automatically.
  - The track number and elapsed playing time appear on the display panel.
- 2 To stop playback, press **STOP ■**.

**TIPS:** Some discs cannot be played on this recorder due to the configuration and characteristics of the disc, or due to the condition of recording and authoring software.

## Playback (continued)

### Playing a DVD±R/±RW disc

- 1 Insert a DVD±R/±RW disc.  
→ The Index Picture screen appears.
- 2 Use ▲▼ keys to select a title and press **PLAY ▶** to start playback.
- 3 To stop playback, press **STOP ■**.

#### Helpful Hint:

– If the message 'BLANK' appears on the display panel, this means that there are no recordings on this disc.

### Playing a DivX disc

This DVD system supports the playback of DivX movie which you copy from your computer onto a CD-R/RW, DVD±R/±RW.

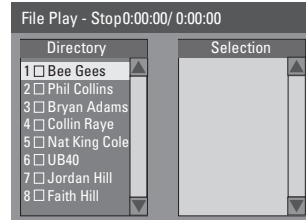
- 1 Insert a DivX disc.  
→ The disc content menu appears.
- If the DivX movie contains external subtitles, you have to first select the subtitle file from the file list.
- 2 Press **PLAY ▶** to start playback.
- During playback, you can press **DISC MENU** to display the disc content menu.

#### Helpful Hints:

– Subtitle files with the following filename extensions (.srt, .smi, .sub, .sami) are supported.  
– It is normal to experience an occasional pixelation during DivX playback due to poor clarity of digital contents during internet downloading.

### Playing an MP3 disc

- 1 Insert an MP3 CD.  
→ The disc content menu appears.



**Note:** It may require longer time for the recorder to display the disc content menu on the TV due to the large number of songs/pictures compiled into one disc.

- 2 Use ▲▼ keys to navigate within the menu and press **OK** to access the folder/album.
- 3 Use ▲▼ keys to select the track/file to play.
- To move up to the previous level, press **RETURN**.
- 4 To create a playlist, highlight the track/file and press **SELECT**.  
→ The selected tracks/files will appear on the right screen.  
→ Use ◀▶ keys to toggle between the left and right screen.  
→ To remove the track/file from the selected playlist, press **CLEAR**.
- 5 To start playback, move the cursor to the right selection screen, press **PLAY ▶**.
- 6 During playback, press ◀◀/ ▶▶ to select the next/previous track.
- 7 To stop playback, press **STOP ■**.

#### Helpful Hint:

– Only the first session of a multi-session CD will playback.

**TIPS:** Some discs cannot be played on this recorder due to the configuration and characteristics of the disc, or due to the condition of recording and authoring software.

## Playback (continued)

### Playing a picture disc (or musical slide show)

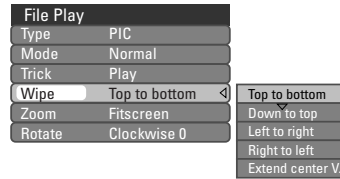
You can display JPEG pictures in the selected roll automatically one after the other.

- 1 Insert a JPEG picture disc (CD, CD-R/RW, DVD±R/±RW.)  
→ The disc content menu appears.
- 2 Use ▲▼ keys to navigate within the menu and press **OK** to access the folder/album.
- 3 To create a playlist, highlight the track/file and press **SELECT**.  
→ The selected tracks/files will appear on the right screen.  
→ To remove the track/file from the playlist, press **CLEAR**.  
→ You can select to playback from the original disc content or from the playlist. Use ◀▶ keys to move to the correct screen before selecting the track/file for playback.



**If the disc contained MP3 music and JPEG picture files, you can start a musical slide show playback,**

- Select an MP3 file and press **OK** to start playback, then select a picture file in the menu and press **OK** to start the musical slide show playback.



- 5 During playback, press **T/C** once to show the disc content menu. Press **T/C** again to access various settings for the slide show playback.  
→ The selected animation settings will appear in the top left corner of the TV screen.
- Press **ZOOM** on the remote control to enlarge the picture.
- 6 To stop playback, press **STOP** ■.

### Playable JPEG picture disc

This recorder can read JPEG pictures stored on a CD-ROM, Picture CD, or DVD.

#### File format:

- The file extension has to be '.JPG', '.JPE' or '.JPEG.'
- It can only display DCF-standard still pictures or JPEG pictures e.g. TIFF. It cannot playback moving pictures, Motion JPEG, progressive JPEG and other formats, or pictures in formats other than JPEG, or pictures associated with sound.
- Due to the large number of songs/pictures compiled into one disc, it may require a longer time for the recorder to display the disc content on the TV.

**TIPS:** The operating features described here might not be possible for certain discs. Always refer to the instructions supplied with the discs.

## Additional Playback Features

### Changing to another chapter/track

When a disc contains more than one chapter or track you can change to a different chapter or track as follows.

During playback,

- Press **▶▶** to go to the next chapter/track.
- Press **◀◀** to return to the start of the previous chapter/track.  
OR
- Use the **numeric keypad 0-9** to input the title/chapter/track number.  
OR
- Press **T/C** to enter the T/C menu and use **▲▼** keys to select { **Title** } or { **Chapter** } and use **numeric keypad 0-9** to input the title/chapter/track number.

### Pausing playback and step play

- 1 During playback, press **||** to pause playback and display a still picture.
- 2 Press **||** again to move one frame forward.
- 3 To resume normal playback, press **▶**.

### Searching forward/backward

You can search forward or backward on a disc at two, four, sixteen or thirty two times the normal playback speed.

- 1 During playback, press **◀** (reverse) or **▶** (forward) to switch to the search function.  
→ The search status bar appears.  
It displays the search speed (FREV x2, FREV x4, FREV x16, FREV x32, FFWD x2, FFWD x4, FFWD x16, FFWD x32)  
→ The sound will be muted.
- 2 Press **◀** (reverse) or **▶** (forward) to cycle through the search speeds.
- 3 To resume normal playback, press **▶**.

### Zooming in

This option allows you to enlarge the picture on the screen and pan through the enlarged picture.

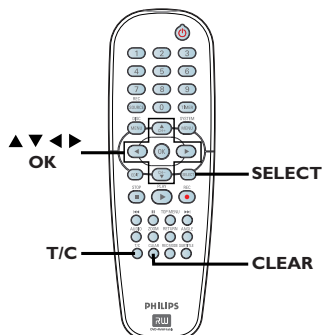
- 1 Press **ZOOM** repeatedly on your remote control to activate zoom.
- 2 Use **◀▶▲▼** keys to pan through the zoomed picture.
- 3 To exit, press **ZOOM** until the picture returns to the normal size.

**TIPS:** The operating features described here might not be possible for certain discs. Always refer to the instructions supplied with the discs.



## Additional Playback Features (continued)

### Using T/C options



- 1 During playback, press **T/C** on the remote control.  
→ The T/C menu appears on the TV.

▷ DVD	
Mode	Normal
Trick mode	Play
Title	02/05
Chapter	01/22
Audio	01/02 - OTH
Subtitle	Off
Angle	01/03
Title	00:22:03 / 00:27:24

- 2 Use **▲▼** keys to select the setting you want to adjust.  
→ Instructions and explanation of the options are provided in the following pages.
- 3 To exit, press **T/C**.

### Selecting various repeat/shuffle functions

You can select various repeat play or random play mode during playback.

- 1 During disc playback, press **T/C** on the remote control.  
→ The T/C menu appears.
- 2 Use **▲▼** keys to select { **Mode** } and press **OK**.
- 3 Use **▲▼** keys to select one of the repeat options.

#### { Repeat A-B }

Select this to repeat the playback of a specific segment within a title/chapter/track. Press **OK** to mark the start and end of the segment you want to repeat.

#### { Repeat Chapter }

Select this to repeat playback of the current chapter (DVD, DVD±R/±RW only.)

#### { Repeat Track/Title }

Select this to repeat playback of the current track/title.

#### { Repeat Directory }

Select this to repeat playback of the current folder/directory (MP3, JPEG, picture disc only.)

#### { Repeat Disc }

Select this to repeat playback of the entire disc. (MP3, JPEG, SVCD and CDDA discs only.)

#### { Shuffle }

Select this to randomly playback all the tracks within the disc (MP3 and audio CD only.)

#### { Normal }

Select this to cancel the repeat mode and return to normal playback.

- 4 To cancel repeat playback, press **STOP ■** or select { **Normal** } and press **OK**.

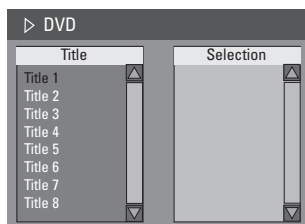
**TIPS:** The operating features described here might not be possible for certain discs. Always refer to the instructions supplied with the discs.

## Additional Playback Features (continued)

### Programming disc tracks

You can play the contents of the disc in the order you want by programming the tracks to be played.

- 1 Press **T/C** on the remote control.  
→ The T/C menu appears.
- 2 Select { **Mode** } > { **Program** }  
→ The program menu appears.



- 3 If the disc is recorded with Titles/Folders/Albums, press **OK** to access the tracks/files/chapters.
- Press **OK** at the highlighted track/file/chapter to start playback.
- Use ◀▶ keys to toggle between the left and right screen.

### To program your favorite track/file/chapter

- 4 Use ▲▼ keys to select the track/file/chapter to program and press **SELECT** on the remote control.  
→ The selected track/file/title will appear at the right screen.  
→ The order on the right screen will be the order of program playback.

### To remove the programmed item from your selection

- 5 Press ▶ key to move to the right screen. Select the track/file/chapter and press **CLEAR** on the remote control.

### To start program play

- 6 Press ▶ key to move to the right screen and press **OK**.  
→ Playback will start from the selected track/file/chapter according to the programmed sequence.

### To exit program play

- 7 Press **STOP** ■ to exit program play.

### Changing the audio soundtrack language

This operation works only on DVDs with multiple soundtrack language or VCDs with multiple audio channels.

This function can also be accessed via the **AUDIO** key on the remote control.

- 1 Press **T/C** on the remote control.  
→ The T/C menu appears.
- 2 Use ▲▼ keys to select { **Audio** } and press ▶ to access its options.
- 3 Use ▲▼ keys to select the audio language and press **OK** to confirm.  
→ The languages may be numbered or abbreviated, such as “En” for English.  
→ If the language selected is not available on the disc, the disc’s default setting for language will be used instead.

#### Helpful Hint:

– Some DVDs allow soundtrack language changes only via the DVD disc menu. To access the Disc Menu, press **DISC-MENU**.

**TIPS:** The operating features described here might not be possible for certain discs. Always refer to the instructions supplied with the discs.

## Additional Playback Features (continued)

### Changing subtitle language

This operation works only on DVDs with multiple subtitle languages, you can change the language you want while playing the DVD.

This function can be also accessed via **SUBTITLE** key on the remote control.

- 1 Press **T/C** on the remote control.  
→ The T/C menu appears.
- 2 Use **▲▼** keys to select { **Subtitle** } and press **▶** to enter its options.
- 3 Use **▲▼** keys to select the language and press **OK** to confirm.  
→ The languages may be numbered or abbreviated, such as “En” for English.  
→ If the language selected is not available on the disc, the disc’s default setting language will be used instead.

#### Helpful Hint:

– Some DVDs discs allow subtitle language changes only via the DVD disc menu. To access the disc menu, press **DISC-MENU**.

### Switching camera angles

This option is only available with DVDs that contain sequences recorded from different camera angles. This allows you to view the picture from different angles. This function can be also accessed via **ANGLE** key on the remote control.

- 1 Press **T/C** on the remote control.  
→ The T/C menu appears.
- 2 Use **▲▼** keys to select { **Angle** } and press **▶** to enter its options.  
→ The camera angles available for selection appears.
- 3 Use **▲▼** keys to select the camera angle you want to switch to, then press **OK** to confirm.

### Time search

This option allows you to skip to a specific point in the current disc.

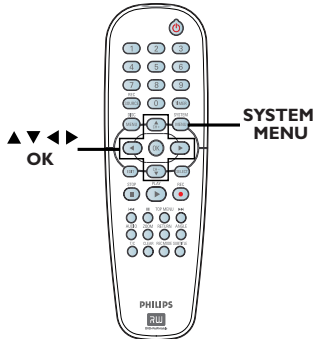
- 1 Press **T/C** on the remote control.  
→ The T/C menu appears.
- 2 Use **▲▼** keys to select { **Title** } and press **▶** to select time search by { **Title** } or { **Chapter** }. To confirm search option, press **OK**.
- 3 Use the **numeric keypad (0-9)** to enter the time required.  
→ Playback skips to the selected time.

**TIPS:** The operating features described here might not be possible for certain discs. Always refer to the instructions supplied with the discs.

# DVD System Menu Options

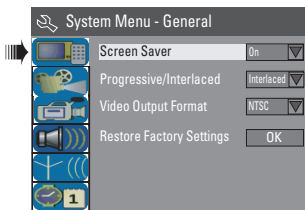
## Accessing the System Menu

The system menu provides various options for you to adjust the recorder to suit your preferences.

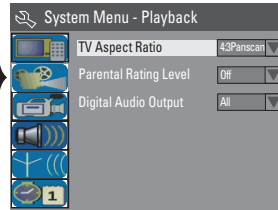


Some system menu settings can only be changed when there is no disc in the disc tray.

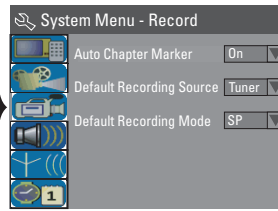
- 1 Press **SYSTEM-MENU** on the remote control.  
→ The system menu appears on the TV.
- 2 Use ▲▼ keys to highlight a system menu option and press ► to access.
- 3 Use ▲▼ keys to highlight the setting you wish to change and press **OK** to confirm and go back to the previous menu item.  
→ Instructions and explanation of the options are provided in the following pages.
- 4 To exit, press **SYSTEM-MENU**.



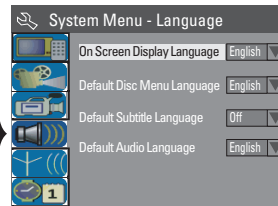
See next page.



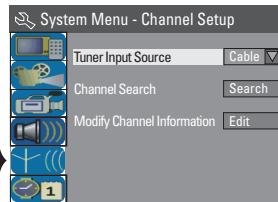
See “DVD System Menu Options – PLAYBACK settings”



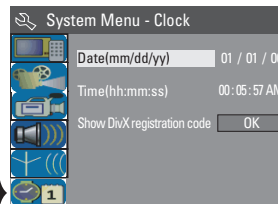
See “Recording – RECORD settings”



See “Step 3: Installation and Setup – LANGUAGE settings”



See “Step 3: Installation and Setup – CHANNEL SETUP settings”



See “Step 3: Installation and Setup – CLOCK settings” and this chapter.

**TIPS:** Press ◀ to go back to previous menu item.  
Press **SYSTEM MENU** to exit the menu item.

## DVD System Menu Options (continued)

### GENERAL settings (underlined options are the factory default settings)

#### Screen Saver

A screen saver prevents damage to the TV screen by avoiding exposure to a static image for too long.

- 1) Use ▲▼ keys to select one of the options.
  - { On } – Select this if you wish to turn off the TV screen after playback had been stopped or paused for longer than 15 minutes.
  - { Off } – Select this to disable the screen saver.
- 2) Press **OK** to confirm your selection.

#### Progressive Scan

Progressive scan delivers a higher picture quality than the standard interlaced TV channel scan. It only works when you have connected the recorder's Y Pb Pr jacks to your TV that supports the progressive video input. Otherwise, the image may not appear or will be distorted. Please check your TV user manual for more information.

- 1) Use ▲▼ keys to select one of the options.
  - { Interlaced } – Select this to enable interlaced feature.
  - { Progressive } – Select this to enable progressive scan feature.
- 2) Press **OK** to confirm your selection.

#### *Helpful Hints:*

- Follow the instructions shown on the TV to confirm the selection (if any.)
- If a blank/distorted TV screen appears, wait for 10 seconds for the auto recovery.

**TIPS:** Press ◀ to go back to previous menu item.  
Press **SYSTEM MENU** to exit the menu item.

## DVD System Menu Options (continued)

### GENERAL settings (underlined options are the factory default settings)

#### Video Output Format

The color system of the DVD system, DVD and TV should match. Only then will it be possible to play a DVD on this system. Before changing the TV system, determine the color system of your TV.

- 1) Use **▲▼** keys to select one of the options.

{ NTSC }      – Select this if the connected TV has the NTSC color system. It will change the video signal of a PAL disc and output it to NTSC format.

{ PAL }      – Select this if the connected TV has the PAL color system. It will change the video signal of an NTSC disc and output it to PAL format.

- 2) Press **OK** to confirm your selection.

*Helpful Hint:*

– If a blank/distorted TV screen appears, wait for 15 seconds for the auto recovery.

#### Restore Factory Settings

This option will restore all the settings of this recorder, except for the PIN code.

**Restore Factory settings can only be changed when there is no disc in the disc tray.**

- 1) Use **▲▼** keys to select this option and press **OK** to reset all settings.
- 2) Select **OK** in the menu to proceed or **CANCEL** to abort, then press **OK** to confirm.

**TIPS:** Press **◀** to go back to previous menu item.  
Press **SYSTEM MENU** to exit the menu item.

## DVD System Menu Options (continued)

### PLAYBACK settings (underlined options are the factory default settings)

#### TV Aspect Ratio

Set the aspect ratio of the recorder according to the TV type you have connected.

- 1) Use **▲▼** keys to select one of the options.

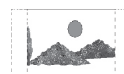
{ **16:9** } – Select this for wide screen TV (frame ratio 16:9.)



{ **4:3 Letterbox** } – Select this for a 'wide screen' display with black bands on the top and bottom of the TV screen.



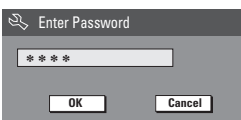
{ **4:3 Panscan** } – Select this for a full-height picture with both side trimmed.



- 2) Press **OK** to confirm your selection.

#### Parental Level Rating

Some DVDs may have a parental level assigned to the complete disc or to certain scenes on the disc. This feature lets you set a playback limitation level.



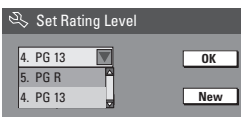
- 1) Press **OK** to access this menu and you will be prompted to enter your four-digit pin code.

- 2) Use the **numeric keypad 0-9** to enter your four-digit pin code.

→ When doing this for the first time, enter the default password '3308'.

→ The set rating level menu appears.

- If you forget your four-digit pin code, the default password is **3308**.



- 3) Use **▲▼** keys to select the desired parental level, then move to **OK** in the menu and press **OK** on the remote control to confirm.

→ To disable parental controls and allow all discs to play, select { **Off** }.

#### Rating explanations

The rating levels range from 1 to 8 and are country dependent. You can prohibit the playing of certain discs that are not suitable for your children, or have certain discs played with alternative scenes.

{ **1. Kid Safe** } ~ { **2. G** } – Childsafe; acceptable for viewers of all ages.

{ **3. PG** } – Parental Guidance suggested.

{ **4. PG 13** } – Unsuitable for children under age 13.

**TIPS:** Press **◀** to go back to previous menu item.  
Press **SYSTEM MENU** to exit the menu item.

## DVD System Menu Options (continued)

### PLAYBACK settings (underlined options are the factory default settings)

#### Parental Level Rating (cont'd)

{ **5. PG R** } ~ { **6. R** } – Restricted; recommended that parents restrict children under 17 from viewing or allow to view only when supervised by a parent or adult guardian.

#### Rating explanations

{ **7. NC 17** } – No children under age 17; not recommended viewing for children under age 17.

{ **8. Adult** } – Mature material; should be viewed only by adults due to graphic sexual material, violence or language.

{ **Off** } – Parental Control is not active.

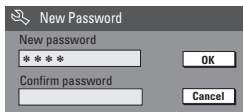
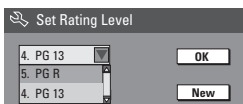
DVDs that are rated higher than the level you have selected will not play unless you enter your four-digit pin code.

#### Helpful hints:

– This feature will not limit viewing if the disc manufacturer did not code the disc.

– VCD, SVCD, CD have no level indication, so parental control has no effect on these type of discs. This also applies to most illegal DVDs.

– Some DVDs are not coded with a rating though the movie rating may be printed on the disc cover. The rating level feature does not prohibit play of such discs.



#### To change your password

- 1) Select { **Parental Rating Level** } and press **OK**.  
→ You will be prompted to enter your four-digit pin code.
- 2) Use the **numeric keypad 0-9** to enter your four-digit pin code and select **OK** in the menu and press **OK** on the remote control to confirm.  
→ The set rating level menu appears.
- 3) Select **New** in the menu and press **OK** to access new password menu.
- 4) Use the **numeric keypad 0-9** to enter your new four-digit pin code, then press **▼** to select the next entry field and enter the same pin code a second time.
- 5) Select **OK** in the menu and press **OK** to confirm.  
→ To abort the change, select **CANCEL** and press **OK**.

**TIPS:** Press **◀** to go back to previous menu item.  
Press **SYSTEM MENU** to exit the menu item.



## DVD System Menu Options (continued)

### PLAYBACK settings (underlined options are the factory default settings)

#### Digital Audio Output

After connecting the recorder to your TV and other devices, you may need to change the digital output setting. Adjust the Digital Output only if you used the recorder's coaxial jack.

- 1) Use **▲▼** keys to select one of the options.
  - { All } – Select this if you have used the COAXIAL (DIGITAL AUDIO) jack to connect the recorder to a stereo receiver that has a built-in multichannel decoder.
  - { LPCM } – Select this if the connected audio equipment is not capable of decoding multichannel audio. Dolby Digital and MPEG-2 multichannel signals are converted to PCM (Pulse Code Modulation.)
- 2) Press **OK** to confirm your selection.

### CLOCK settings

#### Date (mm/dd/yy)

Set the date for the recorder's system clock. See the chapter "Step 3 : Installation and Setup – CLOCK Settings".

#### Time (hh:mm:ss)

Set the time for the recorder's system clock. See the chapter "Step 3 : Installation and Setup – CLOCK Settings".

#### Show DivX® registration code

Philips provides you the DivX® VOD (Video On Demand) registration code that allows you to rent and purchase videos using the DivX® VOD service. For more information, visit [www.divx.com/vod](http://www.divx.com/vod).

- 1) Use **▲▼** keys to select { **Show DivX® registration code** } and press **OK**.  
→ The registration code will appear.
- 2) Press **SYSTEM MENU** to exit.
- 3) Use the registration code to purchase or rent the videos from DivX® VOD service at [www.divx.com/vod](http://www.divx.com/vod). Follow the instructions and download the video from your computer onto a CD-R/RW for playback on this recorder.

#### Helpful Hint:

– All the downloaded videos from DivX® VOD can only be played back on this recorder.

**TIPS:** Press **◀** to go back to previous menu item.  
Press **SYSTEM MENU** to exit the menu item.

# Firmware Upgrade

---

## Installing the latest firmware

Periodically, Philips will issue upgrades for the firmware that was initially installed in your recorder as the firmware is continuously refined for greater stability and compatibility of the recorder.

**Caution!** Power supply must not be interrupted during upgrade!

- Visit Philips' website at '[www.philips.com/usasupport](http://www.philips.com/usasupport)' to check for the availability of the latest firmware upgrade.

**Note:** When checking for the latest firmware upgrade, please also check for any accompanying instructions on installing the firmware.

## Frequently Asked Questions

### What kind of disc should I use for recording?

You can record on both DVD±R and DVD±RW discs. They are compatible with DVD-Video players and DVD-ROM drives in computers.

### What is the capacity of a DVD±R/±RW disc?

4.7GB, or equivalent to six CDs. You can store only one hour of recordings on a single disc at the highest quality (DVD standard) and about 6 hours recordings at the lowest quality (VHS standard.)

### What is the difference between DVD±R and DVD±RW?

DVD±R is “recordable” and DVD±RW is “rewritable”. With a DVD±R, you can record multiple sessions on the same disc, but when the disc is full, you cannot record any more on it. The DVD±RW allows you to record over the same disc repeatedly.

### What is DV?

Using DV, also known as i.LINK, you can connect a DV-equipped camcorder to this recorder using a single DV cable for input and output of audio, video, data and control signals.

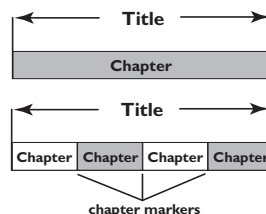
- This recorder is only compatible with DV-format (DVC-SD) camcorders. Digital satellite tuners and Digital VHS video recorders are not compatible.
- You cannot connect more than one DV camcorder at any one time to this recorder.
- You cannot control this recorder from external equipment connected via the DV IN jack.

### Can I copy a VHS tape or DVD from an external player?

Yes, but only if the VHS tape or DVD is not copy-protected.

### What are Titles and Chapters?

A DVD disc contains Titles and Chapters, which are similar to the Titles and Chapters of a book. A Title is often a complete movie and is broken down into Chapters, or individual scenes from the movies.



Programs are recorded as a single title, it may consist of one chapter or a few chapters within a title, depending on the recording settings.

### How do I set up Titles and Chapters?

The recorder automatically creates a new Title every time you start a new recording. You can then add Chapters to these recordings manually or have them automatically inserted at 5-minutes intervals.

### What does “finalizing” a disc do?

Finalizing a disc locks the disc so it can no longer be used for recording. This is only required for DVD±R discs. It will then be compatible with virtually any DVD player. To remove a disc without finalizing it, simply stop recording and eject the disc. You will still be able to record on the disc if there is storage space for more recordings.

### How good is the quality of the recording?

There are a few quality levels to choose from, ranging from “HQ” - High Quality (1 hour mode) to “SLP” - Super Long Play (6 hours mode.) Press the **REC MODE** button on the remote control to choose the quality level that best suits your purpose and the length of material.

Record Mode	Picture Quality	Maximum Recording Time per Disc
HQ	High quality	1 hour
SP	DVD quality-Standard Play	2 hours
EP	VHS quality-Extended Play	4 hours
SLP	VHS quality-Super Long Play	6 hours

# Troubleshooting

## WARNING

Under no circumstances should you try to repair the system yourself, as this will invalidate the warranty. Do not open the system as there is a risk of electric shock.

If a fault occurs, first check the points listed below before taking the system for repair. If you are unable to remedy a problem by following these hints, consult your dealer or Philips for help.

Problem	Solution
<b>No power.</b>	<ul style="list-style-type: none"> <li>– Press STANDBY-ON button on the front of the DVD recorder to switch on the system.</li> <li>– Make sure the AC outlet has power.</li> </ul>
<b>Remote control does not work.</b>	<ul style="list-style-type: none"> <li>– Aim the remote control directly at the sensor on the front of the DVD recorder (not towards TV.)</li> <li>– Remove any obstacles between DVD recorder and the remote control. Aim the remote control towards the set at different angles and/or distances.</li> <li>– Batteries are weak, replace the batteries.</li> <li>– Press REC SOURCE on the remote control to select an input source.</li> </ul>
<b>Disc does not play.</b>	<ul style="list-style-type: none"> <li>– Insert the disc with the label facing up.</li> <li>– Wrong region code. The DVD must be coded for ALL regions or Region I in order to be played back on this DVD recorder.</li> <li>– There is no recording on the disc or it is a wrong type of disc. Read chapter “Playback - Playable discs” for details.</li> <li>– Make sure the disc is not scratched or warped. Clean the disc or replace a new one.</li> <li>– Check if the disc is defective by trying another disc.</li> </ul>
<b>Disc cannot be edited.</b>	<ul style="list-style-type: none"> <li>– The recordings were made on another DVD recorder and hence cannot be edited.</li> </ul>
<b>No sound.</b>	<ul style="list-style-type: none"> <li>– Check the audio connections, the red and white jacks. Read chapters “Step 1 : Basic Connections - Connecting the audio cables” for details.</li> <li>– Set the Digital output correctly, based on the equipment you connected to the recorder. Read chapter “DVD System Menu Options - PLAYBACK settings – Digital Audio Output” for details.</li> </ul>

## Troubleshooting (continued)

Problem	Solution
<b>Distorted sound coming from a connected hi-fi amplifier.</b>	<ul style="list-style-type: none"><li>– Do not connect any cables from the DVD recorder to the 'Phono' input of your amplifier.</li><li>– Do not connect the DVD recorder's Coaxial DIGITAL AUDIO OUT jack to an analog jack (red/white) on the connecting devices.</li></ul>
<b>Unable to play DivX movies.</b>	<ul style="list-style-type: none"><li>– Check that the DivX file is encoded according to the 'Home Theatre Profile' mode with DivX encoder.</li><li>– Check that the DivX movie downloaded is a complete file.</li></ul>
<b>No TV signal received from the DVD recorder.</b>	<ul style="list-style-type: none"><li>– Install the TV channel. Read chapter "Step 3: Installation and Setup – Setting your TV channel programs" for details.</li></ul>
<b>A TV channel installed during the DVD recorder's automatic TV channel search is fuzzy or distorted.</b>	<ul style="list-style-type: none"><li>– Check the video connection between the DVD recorder and the TV.</li><li>– You can further fine-tune the signal of the TV channel. Read chapter on "Step 3: Installation and Setup – CHANNEL SETUP Settings – Modify channel information."</li><li>– Press CH +/- to search for the same TV channel which may have a clearer picture.</li></ul>
<b>The picture is distorted or black and white during playback.</b>	<ul style="list-style-type: none"><li>– The disc does not match with the TV colour system standard (PAL/NTSC.)</li><li>– The disc is dirty, clean the disc.</li><li>– Do not tie the cables of the connected equipments together.</li><li>– Sometimes a small amount of picture distortion may appear. This is not a malfunction.</li><li>– For better video quality, select recording modes: HQ or SP. Read chapter "Recording - Recording settings" for details.</li><li>– The recording can be made in color only when the TV channels or the connected additional device sends a color signal. In some situations, programs that are broadcast in black and white cannot be recorded.</li></ul>

## Troubleshooting (continued)

Problem	Solution
<b>Recordings are not occurring as scheduled. New recordings cannot be made.</b>	<ul style="list-style-type: none"><li>- The TV channel you want to record is not stored or you selected the wrong program number. Check TV channels stored.</li><li>- If you adjust the clock after you set a timer recording, you have to reset the timer recording.</li><li>- If the DVD recorder cannot read the disc, you cannot record.</li><li>- You cannot use the DVD recorder to duplicate copyrighted materials (DVDs or videotapes) onto a DVD±R/±RW.</li><li>- A finalized DVD±R has been inserted. Change disc.</li></ul>
<b>A DVD±R/±RW recorded on this DVD recorder does not play on a DVD player.</b>	<ul style="list-style-type: none"><li>- If a recording is too short, it is possible that a DVD player cannot detect it. Please observe the following 'minimum recording times'. Recording mode : {HQ} – 5 mins, {SP} – 10 mins, {EP} – 20 mins, {SLP} – 30 mins.</li><li>- You have to finalize the DVD±R. Refer to chapter "Playing your recordings (DVD±R) on other DVD players" for details.</li></ul>
<b>Picture is fuzzy and brightness varies when copying DVD Video discs or prerecorded video cassettes.</b>	<ul style="list-style-type: none"><li>- This happens if you try to copy DVDs or video cassettes that have been copy-protected. Even though the picture on the TV is fine, but the recording on a DVD±R/±RW is faulty. This interference is unavoidable with copy-protected DVDs or video cassettes.</li><li>- The DVD±R/±RW has a limited recording lifetime, please change a new disc for recording.</li></ul>

## Troubleshooting (continued)

Problem	Solution
<b>No picture.</b>	<ul style="list-style-type: none"><li>– Switch on your TV and set to the correct Video In channel. Change the TV channel until you see the DVD screen. Read chapter “Step 3 - Installation and setup – Finding the viewing channel” for details.</li><li>– Check the video connection between the DVD recorder and the TV.</li><li>– Your recorder might have been set to Progressive Scan mode while your TV does not support Progressive Scan. Follow the steps below:<ol style="list-style-type: none"><li>1) Connect the supplied AV cable (red/white/yellow) from your DVD recorder OUT2 on the rear panel to the TV's Video In and Audio In jacks.</li><li>2) Switch on the TV and use the TV's remote control to select the corresponding video-in channel on the TV. (eg., AV, EXT1.)</li><li>3) Switch on the DVD recorder and wait until the display panel shows 'No DISC'. Then use the recorder's remote control to enter the code “116811” and press OK. The blue Philips screen should appear on the screen.</li></ol></li></ul>
<b>Unable to eject disc tray.</b>	<ul style="list-style-type: none"><li>– Exit from any on-screen menu until you see the Philips wallpaper</li><li>– Press STOP to stop any playback or recording, then press EJECT on the set.</li></ul>

# Specifications

## Picture/Display

- Aspect ratio: 4:3, 16:9
- D/A converter: 10 bit, 54 MHz
- A/D converter: 10 bit, 54 MHz
- Picture enhancement: Progressive Scan

## Sound

- D/A converter: 24 bit, 96 kHz
- A/D converter: 24 bit, 96 kHz
- Signal to noise ratio: 106
- Crosstalk (1kHz): 105 dB
- Dynamic Range (1kHz): 90 dB

## Video Recording

- Recording system: NTSC, PAL
- Compression formats: MPEG2
- Recording modes:
 

High Quality	: HQ (1 hour)
Standard Play	: SP (2 hours)
Extended Play	: EP (4 hours)
Super Long Play	: SLP (6 hours)
- Audio compression: Dolby Digital

## Video Playback

- Disc playback media: CD, CD-R/-RW, DVD, DVD-Video, DVD+R/+RW, DVD-R/-RW, SVCD, Video CD
- Compression formats: MPEG2, MPEG1, DivX
- Video disc playback system: NTSC, PAL

## Audio Playback

- Disc playback media: CD, CD-R/-RW, MP3-CD, MP3-DVD
- Compression formats: Dolby Digital, DTS, MP3, MPEG2 Multichannel, PCM
- MP3 bit rates: 32~256 kbps and VBR

## Still Picture Playback

- Disc formats: DVD+R/+RW, DVD-R/-RW, Picture CD
- Picture compression formats: JPEG
- Picture enhancement: Rotate, Zoom

## Storage Media

- Recording media: DVD+R/+RW, DVD-R/-RW,

## Tuner/Reception/Transmission

- TV system: NTSC
- Aerial Input: 75 Ohm coaxial (IEC75)

## Connectivity

### Rear Connections:

- Component Video Out
- S-Video Out/In
- Video (CVBS) Out/In
- Audio left/right Out/In
- Digital audio out (coaxial)
- RF Antenna in
- RF TV out
- Mains

### Front Connections:

- Video In
- Audio left/right In
- DV In

## Convenience

- Programming/Timer Enhancements: Daily/Weekly, Repeat Program, Manual Timer, One Touch Recording, VCR Plus+
- Programmable events: 20
- Programming period: 1 month

## Power

- Power supply: 110 – 130 VAC (120Vnom)
- Consumption: 25 W (typical)
- Standby power consumption: < 3W

## Cabinet

- Dimensions (wxhxd) : 435 x 43 x 322 mm
- Net Weight : 4 kg

**This set is designed without any fan or ventilation. Heat dissipation is via the metal casing. Thus it is NORMAL that the set could be quite warm when turned on.**

**Reminder : Do Not place anything above or under the set obstructing its heat dissipation.**



## Display panel/symbols messages

The following symbols/ messages may appear on your recorder display:

- 00:00:00  
Multifunction display/ text line
  - Title/ track number
  - Total/ elapsed/remaining title/track time
  - Additional information regarding the disc
  - TV channel number or source of video
  - Clock (This is displayed in Standby mode).
  - TV program title
- BLANK  
There are no recordings on the disc in the tray.
- FULL  
Disc is full. There is no storage space for new recordings.
- LOADING  
Disc is being recognized by the recorder.
- MENU  
The system setup menu, disc menu, title menu or timer menu display is on.
- NO DISC  
No disc has been inserted. If a disc has been inserted, then it is possible that the disc cannot be read.
- OPEN  
Disc tray is opening or opened.
- PHOTO  
A picture disc has been inserted.
- STARTUP  
The recorder has been turned on.
- REGION  
When the DVD inserted is in a wrong region code as the recorder.
- STOP  
When playback / recording is stopped.
- TOPMENU  
The recorder is in TOP MENU mode.
- ⏸ TIMER  
A timer recording has been programmed or is active.
- UPDATE  
The recorder is writing to the disc.
- UNKNOWN  
The recorder has encountered an error in handling the disc inserted.

## Glossary

**Analog:** Sound that has not been turned into numbers. Analog sound varies, while digital sound has specific numerical values. These jacks send audio through two channels, the left and right.

**Aspect ratio:** The ratio of vertical and horizontal sizes of a displayed image. The horizontal vs. vertical ratio of conventional TV is 4:3, and that of wide-screens is 16:9.

**AUDIO OUT Jacks:** Red and white jacks on the rear of the system that send audio to another system (TV, Stereo, etc.)

**Chapter:** Sections of a picture or a music piece on a DVD that are smaller than titles. A title is composed of several chapters. Each chapter is assigned a chapter number enabling you to locate the chapter you want.

**Component Video Out Jacks:** Jacks on the rear of the DVD system that send high-quality video to a TV that has Component Video In jacks (R/G/B, Y/Pb/Pr, etc.)

**Digital:** Sound that has been converted into numerical values. Digital sound is available when you use the DIGITAL AUDIO OUT COAXIAL. These jacks send audio through multiple channels, instead of just two channels as analog does.

**Disc menu:** A screen display prepared for allowing selection of images, sounds, subtitles, multi-angles, etc recorded on a DVD.

**DivX 3.11/4.x/5.x/6.x:** The DivX code is a patent-pending, MPEG-4 based video compression technology, developed by DivX Networks Inc., that can shrink digital video to sizes small enough to be transported over the internet, while maintaining high visual quality.

**Dolby Digital:** A surround sound system developed by Dolby Laboratories containing up to six channels of digital audio (front left and right, surround left and right, center and subwoofer.)

**Index Picture Screen:** A screen that gives an overview of a DVD±RW or DVD±R. An Index Picture represents each recording.

**JPEG:** A very common digital still picture format. A still-picture data compression system proposed by the Joint Photographic Expert Group, which features small decrease in image quality in spite of its high compression ratio.

**MP3:** A file format with a sound data compression system. "MP3" is the abbreviation of Motion Picture Experts Group 1 (or MPEG-1) Audio Layer 3. By using the MP3 format, one CD-R or CD-RW can contain about 10 times more data than a regular CD.

**MPEG:** Motion Picture Experts Group. A collection of compression systems for digital audio and video.

**Multichannel:** DVDs are formatted to have each sound track constitute one sound field. Multichannel refers to a structure of sound tracks having three or more channels.

**PBC:** Playback Control. Refers to the signal recorded on video CDs or SVCDs for controlling playback. By using menu screens recorded on a Video CD or SVCD that supports PBC, you can enjoy interactive playback and searching.

**PCM:** Pulse Code Modulation. A digital audio encoding system.

**Parental control:** Limits disc play according to the age of the users or the limitation level in each country. The limitation varies from disc to disc; when it is activated, playback will be prohibited if the software's level is higher than the user-set level.

**Region code:** A system allowing discs to be played only in the region designated. This unit will only play discs that have compatible region codes. You can find the region code of your unit by looking on the product label. Some discs are compatible with more than one region (or ALL regions.)

**S-Video:** Produces a clear picture by sending separate signals for the luminance and the color. You can use S-Video only if your TV has an S-Video In jack.

**Surround:** A system for creating realistic three dimensional sound fields full of realism by arranging multiple speakers around the listener.

**Title:** The longest section of a movie or music feature on DVD. Each title is assigned a title number, enabling you to locate the title you want.

**VIDEO OUT jack:** Yellow jack on the back of the DVD system that sends the DVD picture video to a TV.

## PHILIPS LIMITED WARRANTY ONE (1) YEAR

### WARRANTY COVERAGE:

PHILIPS warranty obligation is limited to the terms set forth below.

### WHO IS COVERED:

Philips warrants the product to the original purchaser or the person receiving the product as a gift against defects in materials and workmanship as based on the date of original purchase ("Warranty Period") from an Authorized Dealer. The original sales receipt showing the product name and the purchase date from an authorized retailer is considered such proof.

### WHAT IS COVERED:

The Philips warranty covers new products if a defect arises and a valid claim is received by Philips within the Warranty Period. At its option, Philips will either (1) repair the product at no charge, using new or refurbished replacement parts, or (2) exchange the product with a product that is new or which has been manufactured from new, or serviceable used parts and is at least functionally equivalent or most comparable to the original product in Philips current inventory, or (3) refund the original purchase price of the product.

Philips warrants replacement products or parts provided under this warranty against defects in materials and workmanship from the date of the replacement or repair for ninety (90) days or for the remaining portion of the original product's warranty, whichever provides longer coverage for you. When a product or part is exchanged, any replacement item becomes your property and the replaced item becomes Philips' property. When a refund is given, your product becomes Philips' property.

**Note: Any product sold and identified as refurbished or renewed carries a ninety (90) day limited warranty.**

**Replacement product can only be sent if all warranty requirements are met. Failure to follow all requirements can result in delay.**

### WHAT IS NOT COVERED - EXCLUSIONS AND LIMITATIONS:

This Limited Warranty applies only to the new products manufactured by or for Philips that can be identified by the trademark, trade name, or logo affixed to it. This Limited Warranty does not apply to any non-Philips hardware product or any software, even if packaged or sold with the product. Non-Philips manufacturers, suppliers, or publishers may provide a separate warranty for their own products packaged with the bundled product.

Philips is not liable for any damage to or loss of any programs, data, or other information stored on any media contained within the product, or any non-Philips product or part not covered by this warranty. Recovery or reinstallation of programs, data or other information is not covered under this Limited Warranty.

This warranty does not apply (a) to damage caused by accident, abuse, misuse, misapplication, or non-Philips product, (b) to damage caused by service performed by anyone other than Philips or Philips Authorized Service Location, (c) to a product or a part that has been modified without the written permission of Philips, or (d) if any Philips serial number has been removed or defaced, or (e) product, accessories or consumables sold "AS IS" without warranty of any kind by including refurbished Philips product sold "AS IS" by some retailers.

### This Limited Warranty does not cover:

- Shipping charges to return defective product to Philips.
- Labor charges for installation or setup of the product, adjustment of customer controls on the product, and installation or repair of antenna systems outside of the product.
- Product repair and/or part replacement because of improper installation, connections to improper voltage supply, abuse, neglect, misuse, accident, unauthorized repair or other cause not within the control of Philips.
- Damage or claims for products not being available for use, or for lost data or lost software.
- Damage occurring to product during shipping.
- A product that requires modification or adaptation to enable it to operate in any country other than the country for which it was designed, manufactured, approved and/or authorized, or repair of products damaged by these modifications.
- A product used for commercial or institutional purposes (including but not limited to rental purposes).
- Product lost in shipment and no signature verification receipt can be provided.
- Failure to operate per Owner's Manual.

### TO OBTAIN ASSISTANCE IN THE U.S.A., PUERTO RICO, OR U.S. VIRGIN ISLANDS...

Contact Philips Customer Care Center at:  
1-888-PHILIPS (1-888-744-5477)

### TO OBTAIN ASSISTANCE IN CANADA...

1-800-661-6162 (French Speaking)  
1-888-PHILIPS (1-888-744-5477) - (English or Spanish Speaking)

REPAIR OR REPLACEMENT AS PROVIDED UNDER THIS WARRANTY IS THE EXCLUSIVE REMEDY FOR THE CONSUMER. PHILIPS SHALL NOT BE LIABLE FOR ANY INCIDENTAL OR CONSEQUENTIAL DAMAGES FOR BREACH OF ANY EXPRESS OR IMPLIED WARRANTY ON THIS PRODUCT. EXCEPT TO THE EXTENT PROHIBITED BY APPLICABLE LAW, ANY IMPLIED WARRANTY OF MERCHANTABILITY OR FITNESS FOR A PARTICULAR PURPOSE ON THIS PRODUCT IS LIMITED IN DURATION TO THE DURATION OF THIS WARRANTY.

Some states do not allow the exclusions or limitation of incidental or consequential damages, or allow limitations on how long an implied warranty lasts, so the above limitations or exclusions may not apply to you.

*This warranty gives you specific legal rights. You may have other rights which vary from state/province to state/province.*

Philips, P.O. Box 671539, Marietta, GA. 30006-0026

3121 233 48801