

Quick Start Guide

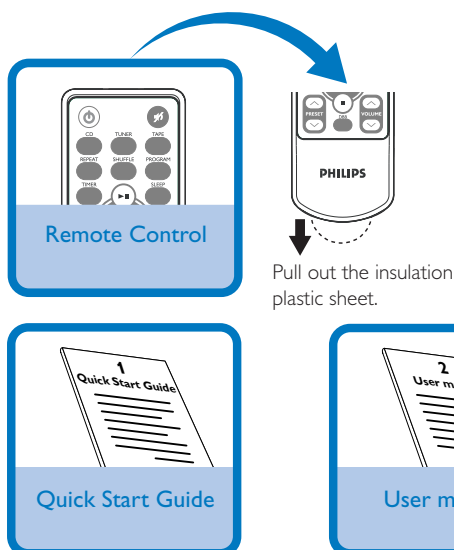


Step A	Setup
--------	-------

Step B	Enjoy
--------	-------

What's in the Box?

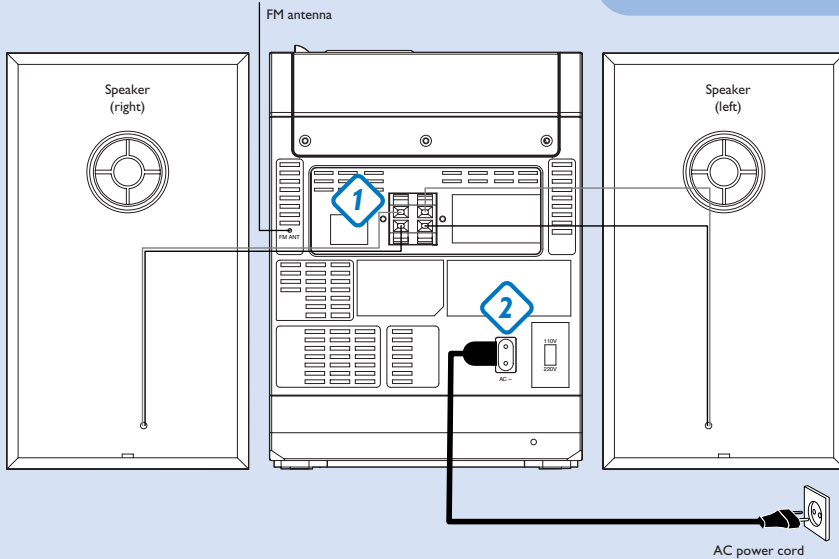
You should find these items upon opening the box.



Connection

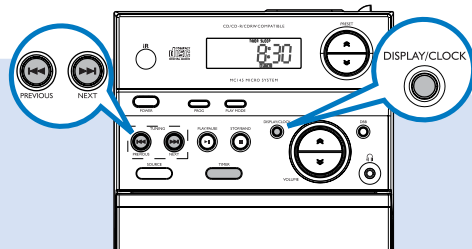
- 1 Connect the speaker wires to the **SPEAKERS** terminals.
- 2 After ensuring all the above connections have been made, connect the power cord of the system to the AC power outlet.

Tip
It is unnecessary to connect the FM pigtail antenna since it is fixed to the main unit.



Setting the clock

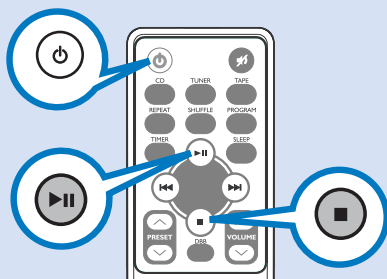
- 1 In standby mode, press **DISPLAY/CLOCK** button.. The clock digits for the hours flash.
- 2 Press **◀◀ / ▶▶** to set the hours.
- 3 Press **DISPLAY/CLOCK** again. The clock digits for the minutes flash.
- 4 Press **◀◀ / ▶▶** to set the minutes.
- 5 Press **DISPLAY/CLOCK** to confirm the time.



Step B *Enjoy*

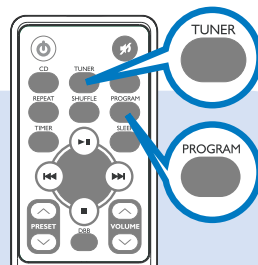
Playing a disc

- 1 Select CD source.
- 2 Press **OPEN•CLOSE** on the top of the system to open the CD door.
- 3 Insert a disc with printed side facing up and press down on **OPEN•CLOSE** to close the CD door.
- 4 Press **▶||** to start playback.
- 5 Press **■** to stop playback.



Auto programming radio stations

- 1 Press **SOURCE** (**TUNER** on the remote control) to select tuner source.
- 2 Press **STOP/BAND** (on the set) or **TUNER** (on the remote control) once or more to select your waveband.
- 3 Press **PRESET** \approx / \approx (Δ / ∇ on remote control) to select the preset number where programming should start.
- 4 Press **PROG** for more than 2 seconds to activate programming.



Tip
Detailed playback features and additional functions are described in the accompany user's manual.