

# Always there to help you

Register your product and get support at  
[www.philips.com/welcome](http://www.philips.com/welcome)

Question?  
Contact  
Philips

FMW154



## User Manual

# PHILIPS

# Contents

---

<b>1</b>	<b>Important</b>	<b>4</b>
	Safety	4
	Notice	4

---

<b>2</b>	<b>Your Mini Hi-Fi System</b>	<b>6</b>
	Introduction	6
	What's in the box	6
	Overview of the main unit	7
	Overview of the remote control	8

---

<b>3</b>	<b>Get started</b>	<b>9</b>
	Connect speakers	9
	Install remote control batteries	10
	Connect power	10
	Set the clock	10
	Turn on	10

---

<b>4</b>	<b>Play disc</b>	<b>11</b>
----------	------------------	-----------

---

<b>5</b>	<b>Play options</b>	<b>12</b>
	Repeat play	12
	Random play	12
	Program tracks	12

---

<b>6</b>	<b>Listen to the radio</b>	<b>13</b>
	Tune to a radio station	13
	Program radio stations automatically	13
	Program radio stations manually	13
	Select a preset radio station	13

---

<b>7</b>	<b>Play tape</b>	<b>14</b>
----------	------------------	-----------

---

<b>8</b>	<b>Adjust sound</b>	<b>14</b>
	Adjust volume	14
	Select a preset sound effect	14
	Enhance bass	14
	Mute sound	14

---

<b>9</b>	<b>Use more of your Mini Hi-Fi System</b>	<b>15</b>
	Listen to an external device	15
	Record from disc	15
	Record from radio	15
	Record from external source	15
	Set the sleep timer	15
	Set the alarm timer	16

---

<b>10</b>	<b>Product information</b>	<b>17</b>
	Specifications	17
	Supported MP3 disc formats	17
	Maintenance	18

---

<b>11</b>	<b>Troubleshooting</b>	<b>19</b>
-----------	------------------------	-----------

# 1 Important

---

## Safety

- Read these instructions.
- Follow all instructions.
- Do not block any ventilation openings. Install in accordance with the manufacturer's instructions.
- Do not install near any heat sources such as radiators, heat registers, stoves, or other apparatus (including amplifiers) that produce heat.
- Protect the power cord from being walked on or pinched, particularly at plugs, convenience receptacles, and the point where they exit from the unit.
- Only use attachments/accessories specified by the manufacturer.
- Unplug this unit during lightning storms or when unused for long periods of time.
- Refer all servicing to qualified service personnel. Servicing is required when the unit has been damaged in any way, such as power-supply cord or plug is damaged, liquid has been spilled or objects have fallen into the apparatus, the unit has been exposed to rain or moisture, does not operate normally, or has been dropped.
- Battery usage CAUTION – To prevent battery leakage which may result in bodily injury, property damage, or damage to the unit or remote control:
  - Install all batteries correctly, + and - as marked on the unit or the remote control.
  - Do not mix batteries (old and new or carbon and alkaline, etc.).
  - Remove batteries when the unit or remote control is not used for a long time.
- Batteries (battery pack or batteries installed) shall not be exposed to excessive heat such as sunshine, fire or the like.
- The unit shall not be exposed to dripping or splashing.
- Do not place any sources of danger on the unit (e.g. liquid filled objects, lighted candles).
- Where the MAINS plug or an appliance coupler is used as the disconnect device, the disconnect device shall remain readily operable.



### Warning

- Never remove the casing of this apparatus.
- Never lubricate any part of this apparatus.
- Never place this apparatus on other electrical equipment.
- Keep this apparatus away from direct sunlight, naked flames or heat.
- Never look into the laser beam inside this apparatus.
- Ensure that you always have easy access to the power cord, plug or adaptor to disconnect this apparatus from the power.

---

## Mains fuse

This information applies only to products with a UK mains plug.

This product is fitted with an approved molded plug. If you replace the fuse, use one with:

- the ratings shown on the plug,
- a BS 1362 approval, and
- the ASTA approval mark.

Contact your dealer if you are not sure about what type of fuse to use.

Caution: To conform with the EMC directive (2004/108/EC), do not detach the plug from the power cord.

---

## Notice

Any changes or modifications made to this device that are not expressly approved by Philips Consumer Lifestyle may void the user's authority to operate the equipment.



This product complies with the radio interference requirements of the European Community.



The making of unauthorized copies of copy-protected material, including computer programs, files, broadcasts and sound recordings, may be an infringement of copyrights and constitute a criminal offence. This equipment should not be used for such purposes.

## Recycling



Your product is designed and manufactured with high quality materials and components, which can be recycled and reused.

When you see the crossed-out wheel bin symbol attached to a product, it means the product is covered by the European Directive 2002/96/EC:



Never dispose of your product with other household waste. Please inform yourself about the local rules on the separate collection of electrical and electronic products. The correct disposal of your old product helps prevent potentially negative consequences on the environment and human health.

Your product contains batteries covered by the European Directive 2006/66/EC, which cannot be disposed of with normal household waste. When you see the crossed-out wheel bin symbol with the chemical symbol 'Pb', it means

that the batteries comply with the requirement set by the directive for lead:



Please inform yourself about the local rules on separate collection of batteries. The correct disposal of batteries helps prevent potentially negative consequences on the environment and human health.

## Environmental information

All unnecessary packaging has been omitted. We have tried to make the packaging easy to separate into three materials: cardboard (box), polystyrene foam (buffer) and polyethylene (bags, protective foam sheet.)

Your system consists of materials which can be recycled and reused if disassembled by a specialized company. Please observe the local regulations regarding the disposal of packaging materials, exhausted batteries and old equipment.



Windows Media and the Windows logo are trademarks, or registered trademarks of Microsoft Corporation in the United States and/or other countries.

This apparatus includes this label:



## 2 Your Mini Hi-Fi System

Congratulations on your purchase, and welcome to Philips! To fully benefit from the support that Philips offers, register your product at [www.Philips.com/welcome](http://www.Philips.com/welcome).

---

### Introduction

With this unit, you can enjoy audio from discs, tapes, external devices, or radio stations. The unit offers you multiple sound effect settings that enrich sound with Digital Sound Control (DSC) and Dynamic Bass Boost (DBB). The unit supports the following media formats:



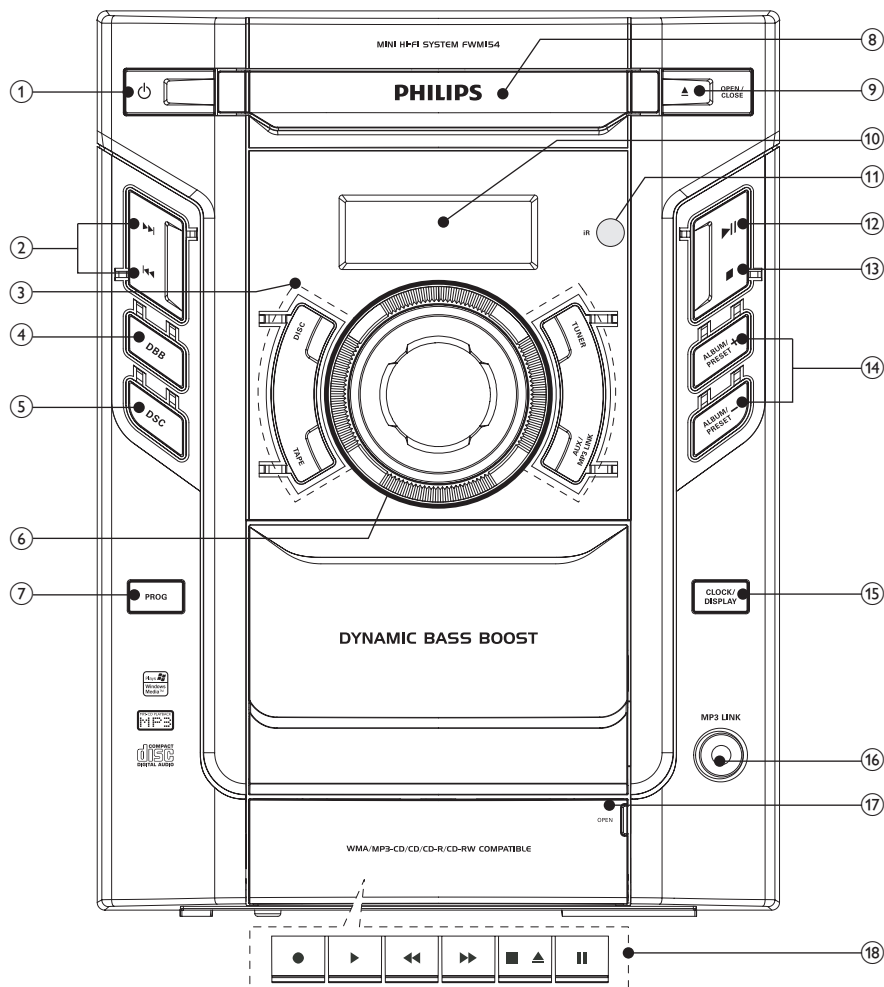
---

### What's in the box

Check and identify the contents of your package:

- Main unit
- Speaker box x 2
- Remote control
- MP3 link cable
- User manual
- Quick start guide

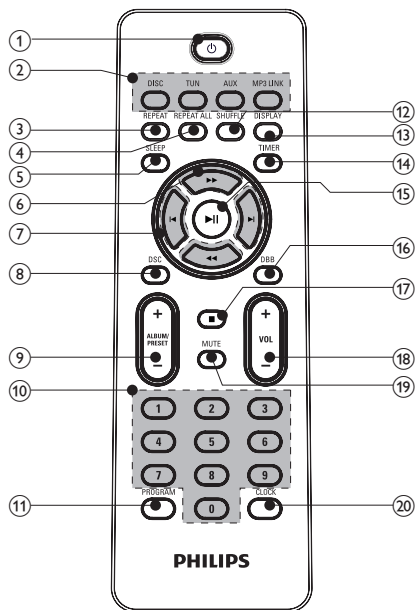
## Overview of the main unit



- ①
  - Turn on the unit.
  - Switch the unit to standby mode.
- ②
  - Skip to the previous/next track.
  - Search within a track or disc.
  - Adjust time.
- ③ Source buttons (DISC, TAPE, TUNER, AUX/MP3 LINK)
  - Select a source.
- ④ DBB
  - Turn dynamic bass enhancement on or off.

- ⑤ **DSC**
  - Select a preset sound setting.
- ⑥ **Volume control**
  - Adjust volume.
- ⑦ **PROG**
  - Program tracks.
  - Program radio stations.
  - Review the program.
- ⑧ **Disc compartment**
- ⑨ **OPEN/CLOSE ▲**
  - Open or close the disc compartment.
- ⑩ **Display panel**
  - Show current status.
- ⑪ **IR sensor**
- ⑫ **▶||**
  - Start or pause play.
- ⑬ **■**
  - Stop play or erase a program.
- ⑭ **ALBUM/PRESET +/-**
  - Select a preset radio station.
  - Skip to the previous/next album.
- ⑮ **CLOCK/DISPLAY**
  - Set the clock.
  - During play, display the clock.
- ⑯ **MP3 LINK**
  - Audio input jack (3.5mm) for an external audio device.
- ⑰ **OPEN**
  - Pull to open the tape button cover.
- ⑱ **Tape controls**
  - ●
    - Start to record.
  - ▶
    - Start tape play.
  - ◀◀ / ▶▶
    - Fast rewind/forward the tape.
  - ■▲
    - Stop the tape play or open the tape door.
  - ||
    - Pause tape play or pause recording.

## Overview of the remote control



- ① **⏻**
  - Turn on the unit.
  - Switch to standby mode.
- ② **Source buttons (DISC, TUN, AUX, MP3 LINK)**
  - Select a source: DISC, TUNER, AUX, or MP3 LINK.
- ③ **REPEAT**
  - Play a track repeatedly.
- ④ **REPEAT ALL**
  - Play all tracks repeatedly.
- ⑤ **SLEEP**
  - Set the sleep timer.
- ⑥ **◀◀ / ▶▶**
  - Search within a track/disc.
  - Tune to a radio station.

- ⑦ **⏮ / ⏭**
  - Skip to the previous/next track.
  - Adjust time.
- ⑧ **DSC**
  - Select a preset sound setting.
- ⑨ **ALBUM/PRESET +/-**
  - Select a preset radio station.
  - Skip to the previous/next album.
- ⑩ **Numeric keypad**
  - Select a track from a disc directly.
  - Select a preset radio station directly.
- ⑪ **PROGRAM**
  - Program tracks.
  - Program radio stations.
  - Review the program.
- ⑫ **SHUFFLE**
  - Play tracks randomly.
- ⑬ **DISPLAY**
  - During play, display the clock.
- ⑭ **TIMER**
  - Set the alarm timer.
  - Review the alarm timer.
- ⑮ **▶ ||**
  - Start or pause play.
- ⑯ **DBB**
  - Turn dynamic bass enhancement on or off.
- ⑰ **■**
  - Stop play or erase a program.
- ⑱ **VOL +/-**
  - Adjust volume.
- ⑲ **MUTE**
  - Mute volume.
- ⑳ **CLOCK**
  - Set the clock.

## 3 Get started

### ! Caution

- Use of controls or adjustments or performance of procedures other than herein may result in hazardous radiation exposure or other unsafe operation.

Always follow the instructions in this chapter in sequence.

If you contact Philips, you will be asked for the model and serial number of this apparatus. The model number and serial number are on the back of the apparatus. Write the numbers here:

Model No. \_\_\_\_\_

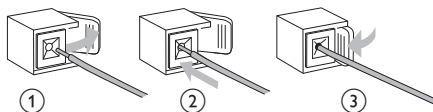
Serial No. \_\_\_\_\_

## Connect speakers

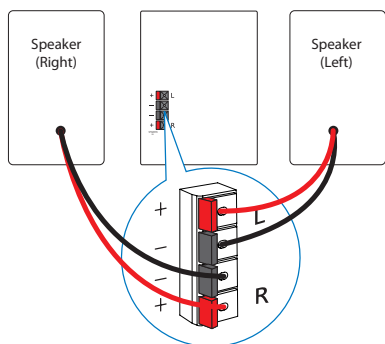
### ≡ Note

- Ensure that the colors of the speaker wires and terminals are matched.

- 1 Hold down the socket flap.
- 2 Insert the stripped part of the wire completely.
  - Insert the right speaker wires to "R", left speaker wires to "L".
  - Insert the red wires to "+", black wires to "-".
- 3 Release the socket flap.

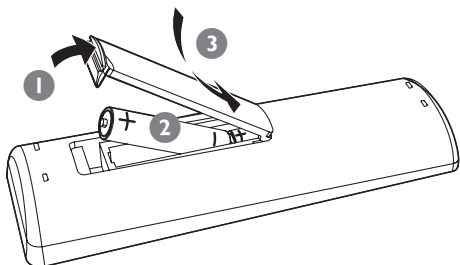






## Install remote control batteries

- 1 Open the battery compartment.
- 2 Insert 2 AAA batteries with correct polarity (+/-) as indicated.
- 3 Close the battery compartment.



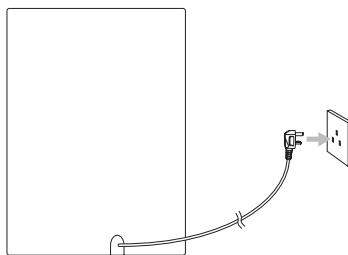
## Connect power



### Caution

- Risk of product damage! Ensure that the power supply voltage corresponds to the voltage printed on the back or the underside of the unit.
- Risk of electric shock! When you unplug the AC power cord, always pull the plug from the socket. Never pull the cord.
- Before connecting the AC power cord, ensure you have completed all other connections.

- 1 Connect the power cord to the wall outlet.



## Set the clock

- 1 In standby mode, press and hold **CLOCK**.  
↳ The hour digits are displayed and begin to blink.
- 2 Press **◀/▶** on the remote control to set the hours.
- 3 Press **CLOCK**.  
↳ The minute digits are displayed and begin to blink.
- 4 Press **◀/▶** to set the minutes.
- 5 Press **CLOCK** to confirm the time.



### Tip

- During play, you can press **DISPLAY** on the remote control to view the clock.

## Turn on

- 1 Press **⏻**.  
↳ The unit switches to the last selected source.

---

## Switch to standby mode

- 1 Press **⏻** to switch the unit to standby mode.
  - ↳ The backlight on the display panel is reduced.
  - ↳ The clock (if set) appears on the display panel.

## 4 Play disc

- 1 Press **DISC** to select the disc source.
- 2 Press **OPEN/CLOSE ▲** on the front panel to open the disc tray.
- 3 Insert a disc with the printed side facing up, then close the disc tray.
  - ↳ Play starts automatically.
    - To pause/resume play, press **▶II**.
    - To stop play, press **■**.
    - For MP3/WMA disc: to select an album, press **ALBUM/PRESET +/-**.
    - To skip to a track, press **I◀ / ▶I**.
    - To search within a track, press and hold **◀◀ / ▶▶**. Release to resume normal play.

## 5 Play options

---

### Repeat play

---

#### Play a track repeatedly

---

- 1 During play, press **REPEAT** on the remote control.  
↳ **[REPEAT]** (repeat) is displayed. The current track is played repeatedly.
- 2 To return to normal play, press **REPEAT** again.

#### Play all tracks or an album repeatedly

---

- 1 During play, press **REPEAT ALL** on the remote control:
  - **[REPEAT ALL]** (repeat all) is displayed. All tracks are played repeatedly.
- 2 To return to normal play, press **REPEAT ALL** again.

### Random play

---

- 1 Press **SHUFFLE**.  
↳ **[SHUF]** (shuffle) is displayed. All tracks are played randomly.
- 2 To return to normal play, press **SHUFFLE** again.



#### Tip

- Shuffle play cannot be selected when you play programmed tracks.
- You can activate **[SHUF]** (shuffle) and **[REPEAT ALL]** (repeat all) at the same time.

---

### Program tracks

You can program a maximum of 20 tracks.

- 1 At CD mode, in the stop position, press **PROGRAM** on the remote control to activate the program mode.  
↳ **[PROG]** (program) blinks on the display.
- 2 For MP3/WMA tracks, press **ALBUM/PRESET +/-** to select an album.
- 3 Press **◀ / ▶** to select a track number; then press **PROGRAM** to confirm.
- 4 Repeat steps 2 to 3 to program more tracks.
- 5 Press **▶||** to play the programmed tracks.  
↳ During play, **[PROG]** (program) is displayed.
  - To erase the program, in the stop position, press **■**.

## 6 Listen to the radio

### Tune to a radio station



#### Tip

- For optimal FM reception, fully extend and adjust the position of the FM antenna.
- For optimal MW reception, adjust the position of the main unit.

- 1 Press **TUN** on the remote control to select the tuner source.
- 2 Press **TUN** to select FM or MW.
- 3 Press and hold **◀◀** / **▶▶** for more than 2 seconds.
  - ↳ **[SEARCH]** (search) is displayed.
  - ↳ The radio tunes to a station with strong reception automatically.
- 4 Repeat step 3 to tune to more stations.
  - To tune to a weak station, press **◀◀** / **▶▶** repeatedly until you find optimal reception.

### Program radio stations automatically



#### Note

- You can program a maximum of 20 preset radio stations.

- 1 In tuner mode, press and hold **PROGRAM** for 2 seconds to activate automatic program mode.
  - ↳ **[AUTO]** (auto) is displayed and begins to blink.

- ↳ All available stations are programmed in the order of waveband reception strength.
- ↳ The first programmed radio station is broadcast automatically.

### Program radio stations manually



#### Note

- You can program a maximum of 20 preset radio stations.

- 1 Tune to a radio station.
- 2 Press **PROGRAM** to activate program mode.
  - ↳ **[PROG]** (program) blinks on the display.
- 3 Press **ALBUM/PRESET +/-** to allocate a number (1 to 20) to this radio station, then press **PROGRAM** to confirm.
  - ↳ The preset number and the frequency of the preset station are displayed.
- 4 Repeat the above steps to program other stations.



#### Note

- To overwrite a programmed station, store another station in its place.

### Select a preset radio station

- 1 In tuner mode, press **ALBUM/PRESET +/-** to select a preset number.

## 7 Play tape

- 1 Press **TAPE** on the main unit to select the tape source.
- 2 Pull **OPEN** on the front panel to open the tape button cover.
- 3 Press **■▲** to open the tape door.
- 4 Load the tape with the open side downward and the full spool to the left.
- 5 Press **▶** to start play.
  - To pause/resume play, press **||**.
  - To fast rewind/forward the tape, press **◀◀ / ▶▶**.
  - To stop play, press **■▲**.



### Note

- When you play or record a tape, the sound source cannot be changed.

## 8 Adjust sound

---

### Adjust volume

- 1 During play, press **VOL +/-** to increase/decrease the volume.

---

### Select a preset sound effect

- 1 During play, press **DSC** repeatedly to select:
  - [POP] (pop)
  - [JAZZ] (jazz)
  - [CLASSIC] (classic)
  - [ROCK] (rock)

---

### Enhance bass

- 1 During play, press **DBB** to turn on or off dynamic bass enhancement.
  - ↳ If DBB is activated, DBB is displayed.

---

### Mute sound

- 1 During play, press **MUTE** to mute/unmute sound.

## 9 Use more of your Mini Hi-Fi System

---

### Listen to an external device

You can also listen to an external audio device through this unit.

**For a audio device with a headphone socket:**

- 1 Press **MP3 LINK** to select the MP3 link source.
- 2 Connect the supplied MP3 link cable to:
  - the **MP3 LINK** socket on this unit
  - the headphone socket on an MP3 player.
- 3 Start to play the MP3 player. (See the user manual of the MP3 player)

**For other audio devices:**

- 1 Press **AUX** to select the AUX source.
- 2 Connect audio cables to:
  - the **AUX IN** sockets on this unit
  - the audio output sockets on the audio device.
- 3 Start to play the device. (See the device user manual)

---

### Record from disc

- 1 Press **DISC** to select the disc source.
- 2 Place a disc on the tray with the printed side facing up.
- 3 Press **■▲** to open the tape compartment.
- 4 Insert a blank tape and close the tape compartment.
- 5 To record from a specific track, press **◀/▶** to select the track.

- 6 To record tracks in a specific sequence, program the tracks (see "**Play options**">"**Program tracks**").
- 7 Press **●** to start to record.
  - To pause, press **||**. To resume, press **||** again.
  - To stop, press **■▲**.

---

### Record from radio

- 1 Tune to a radio station.
- 2 Press **■▲** to open the tape door.
- 3 Insert a blank tape and close the tape compartment.
- 4 Press **●** to start to record.
  - To pause, press **||**. To resume, press **||** again.
  - To stop, press **■▲**.

---

### Record from external source

- 1 Press **AUX** or **MP3 LINK** to select a source.
- 2 Connect the external device.
- 3 Start to play the selected source.
- 4 Insert a blank tape and close the tape compartment.
- 5 Press **●** to start to record.
  - To pause, press **||**. To resume, press **||** again.
  - To stop, press **■▲**.

---

### Set the sleep timer

This unit can switch to standby automatically after a set period of time.

- 1 When the unit is turned on, press **SLEEP** repeatedly to select a set period of time (in minutes).
  - ➔ When sleep timer is activated, the display shows **zZ**.

### To deactivate sleep timer

- 1 Press **SLEEP** repeatedly until "SLP OFF" is displayed.
  - ↳ When sleep timer is deactivated, **zzz** disappears on the display.

---

## Set the alarm timer

This unit can be used as an alarm clock. The last selected source is activated to play at a preset time.

- 1 Ensure that you have set the clock correctly.
- 2 Press and hold **TIMER** on the remote control for more than 2 seconds.
  - ↳ The hour digits are displayed and begin to blink.
- 3 Press **◀/▶** to set the hour.
- 4 Press **TIMER** to confirm.
  - ↳ The minute digits are displayed and begin to blink.
- 5 Press **◀/▶** to set the minute.
- 6 Press **TIMER** to confirm.
  - ↳ The timer is set and activated.

### To select a source to activate as the alarm sound:

- 1 Press **DISC**, **TUN**, **AUX**, **MP3 LINK**, or **TAPE** to select a source.
  - For **DISC**: ensure that there is a disc in the disc compartment.
  - For **TUNER**: tune to a radio station.
  - For **AUX/MP3 LINK**: ensure that the external device is connected and turned on.
  - For **TAPE**: ensure that there is a tape in the tape deck and press the **▶** button.
- 2 Press **⏻** to switch the unit to standby.

---

## Activate and deactivate alarm timer

- 1 Press **TIMER** repeatedly to activate or deactivate timer.
  - ↳ If timer is activated, the display shows **⌚**.
  - ↳ If timer is deactivated, **⌚** disappears on the display.

# 10 Product information



## Note

- Product information is subject to change without prior notice.

## Specifications

### Amplifier

Rated Output Power	2X20W RMS
Frequency Response	63 - 16000 Hz, $\pm 3$ dB
Signal to Noise Ratio	>62dB

### Disc

Laser Type	Semiconductor
Disc Diameter	12cm/8cm
Support Disc	CD-DA, CD-R, CD-RW, MP3-CD, WMA-CD
Audio DAC	24Bits / 44.1kHz
Total Harmonic Distortion	<1%
Frequency Response	63Hz - 16kHz
S/N Ratio	>65dBA

### Tuner

#### FM

Tuning Range	87.5 - 108 MHz
Tuning grid	50 KHz
Sensitivity	
- Mono, 26dB S/N Ratio	<22 dBu
- Stereo, 46dB S/N Ratio	<45 dBu
Search Selectivity	<28 dBu
Total Harmonic Distortion	<3%
Signal to Noise Ratio	>45 dB

## MW

Tuning Range	531 - 1602 kHz
--------------	----------------

### Tape deck

Frequency Response	
Normal tape (type I)	125-8000Hz (8dB)
S/N Ratio	
Normal tape (type I)	35dBA
Wow and flutter	$\leq 0.4\%$ DIN

### General information

AC Power	220 - 230 V, 50 Hz
Operation Power	
Consumption	44 W
Standby Power	
Consumption	< 0.9 W
Dimensions	
- Main Unit (W x H x D)	220 x 290 x 271 mm
- Speaker Box (W x H x D)	189 x 290 x 175 mm
Weight	
- With Packing	8.5 kg
- Main Unit	3.8 kg
- Speaker Box	2 x 1.7 kg

## Supported MP3 disc formats

- ISO9660, Joliet
- Maximum title number: 511 (depending on file name length)
- Maximum album number: 511
- Directory nesting up to a maximum of 8 levels
- Supported sampling frequencies: 32 kHz, 44.1kHz, 48 kHz
- Supported Bit-rates: 32~256 (kbps), variable bit rates
- ID3 tag v2.0 or later



---

## Maintenance

### Clean the cabinet

- Use a soft cloth slightly moistened with a mild detergent solution. Do not use a solution containing alcohol, spirits, ammonia or abrasives.

### Clean discs

- When a disc becomes dirty, clean it with a cleaning cloth. Wipe the disc from the centre out.



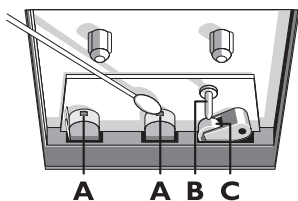
- Do not use solvents such as benzene, thinner, commercially available cleaners, or antistatic spray intended for analogue records.

### Clean the disc lens

- After prolonged use, dirt or dust may accumulate at the disc lens. To ensure good play quality, clean the disc lens with Philips CD lens cleaner or any commercially available cleaner. Follow the instructions supplied with cleaner.

### Clean the heads and the tape paths

- To ensure good recording and play quality, clean the heads **A**, the capstan(s) **B**, and pressure roller(s) **C** after every 50 hours of tape operation.
- Use a cotton swab slightly moistened with cleaning fluid or alcohol.



- You can also clean the heads by playing a cleaning tape once.

### Demagnetise the heads

- Use a demagnetising tape available at your dealer.

# 11 Troubleshooting



## Warning

- Never remove the casing of this device.

To keep the warranty valid, never try to repair the system yourself.

If you encounter problems when using this device, check the following points before requesting service. If the problem remains unsolved, go to the Philips Web page ([www.philips.com/support](http://www.philips.com/support)). When you contact Philips, make sure that the device is nearby and the model number and serial number are available.

### No power

- Ensure that the AC power plug of the unit is connected properly.
- Ensure that there is power at the AC outlet.
- To save power, the system switches off automatically 15 minutes after track play reaches the end and no control is operated.

### No sound or poor sound

- Adjust the volume.
- Check that the speakers are connected correctly.
- Check if the stripped speaker wires are clamped.

### Left and right sound outputs reversed

Check the speaker connections and location.

### No response from the unit

- Disconnect and reconnect the AC power plug, then turn on the system again.
- As a power-saving feature, the unit switches off automatically 15 minutes after track play reaches the end and no control is operated.

### Remote control does not work

- Before you press any function button, first select the correct source with the remote control instead of the main unit.
- Reduce the distance between the remote control and the unit.
- Insert the battery with its polarities (+/- signs) aligned as indicated.
- Replace the battery.
- Aim the remote control directly at the sensor on the front of the unit.

### No disc detected

- Insert a disc.
- Check if the disc is inserted upside down.
- Wait until the moisture condensation at the lens has cleared.
- Replace or clean the disc.
- Use a finalized CD or correct format disc.

### Poor radio reception

- Increase the distance between the unit and your TV or VCR.
- Fully extend the FM antenna.

### Timer does not work

- Set the clock correctly.
- Switch on the timer.

### Clock/timer setting erased

- Power has been interrupted or the power plug has been disconnected.
- Reset the clock/timer.



Specifications are subject to change without notice  
© 2012 Koninklijke Philips Electronics N.V.  
All rights reserved.

FWM154\_05\_UM\_V3.0

