

Always there to help you

Register your product and get support at
www.philips.com/welcome

DCM1170

Question?
 Contact
 Philips



Short User Manual

PHILIPS

Before using your product, read all accompanying safety information.

1. Insert the CD into the dock station.
2. Push the CD down until it is fully seated.
3. The CD is now ready for playback.

Switch to standby mode

Switch to ECO standby mode (3 sec.)

DOCK

1. Press the CD button.
2. Press the up arrow button.
4. Press the up arrow button again.



Compatible USB devices:

- USB flash memory (USB2.0 or USB1.1)
- USB flash players (USB2.0 or USB1.1)
- memory cards (requires an additional card reader to work with this unit)

Supported formats:

- USB or memory file format: FAT12, FAT16, FAT32 (sector size: 512 bytes)
- MP3 bit rate (data rate): 32-320 Kbps and variable bit rate
- Directory nesting up to a maximum of 8 levels
- Number of albums/ folders: maximum 99
- Number of tracks/titles: maximum 999
- ID3 tag v2.0 or later
- File name in Unicode UTF8 (maximum length: 32 bytes)

Supported MP3 disc formats

- ISO9660, Joliet
- Maximum title number: 128 (depending on file name length)
- Maximum album number: 99
- Supported sampling frequencies: 32 kHz, 44.1 kHz, 48 kHz
- Supported Bit-rates: 32-256 (kbps), variable bit rates



Control play

▲ / ▼	Select a folder.
◀▶	Select an audio file.
⏸	Pause or resume play.
■	Stop play.
MENU (menu)	Access iPod/iPhone menu.
OK (OK)	Confirm a selection.
REPEAT (repeat)	Play a track or all tracks repeatedly.
SHUFFLE (shuffle)	Play tracks randomly.
VOL +/-	Increase or decrease the volume.
MUTE (mute)	Mute or restore sound.
SOUND (sound)	Enrich sound effect with DSC: balanced, clear, powerful, warm, and bright.
DISPLAY (display)	Adjust display brightness.



Tune to FM radio stations

2 A

97.1

101.5

2 B

101.5

101.6

Store FM radio stations automatically

1. Press FM.
2. Press PROG.
3. Wait 3 seconds.

Store FM radio stations manually

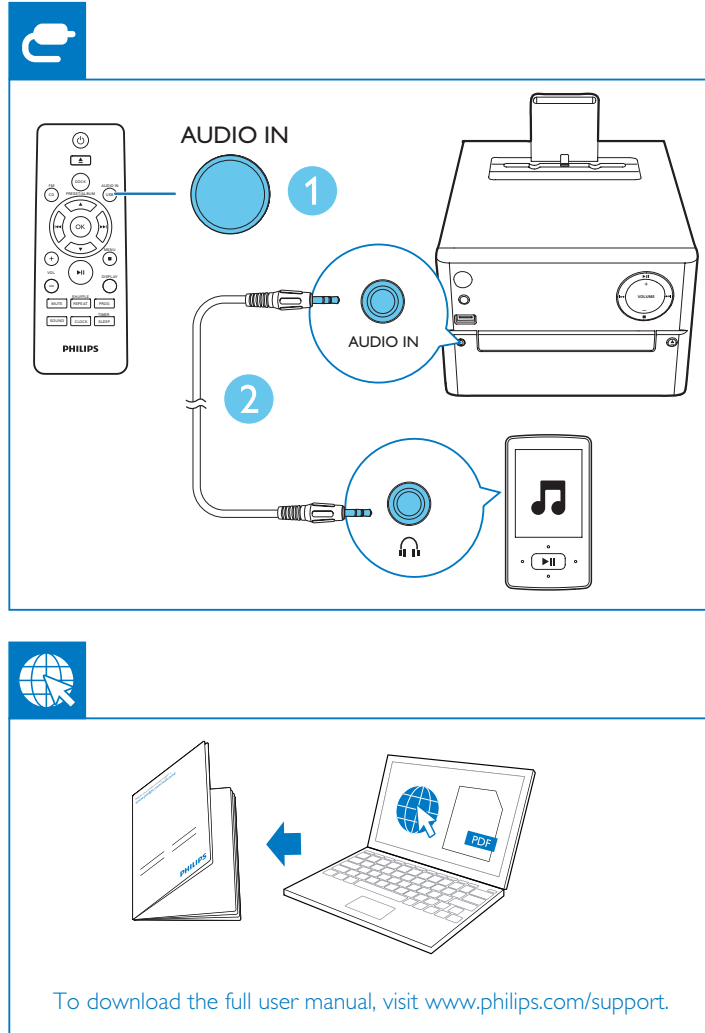
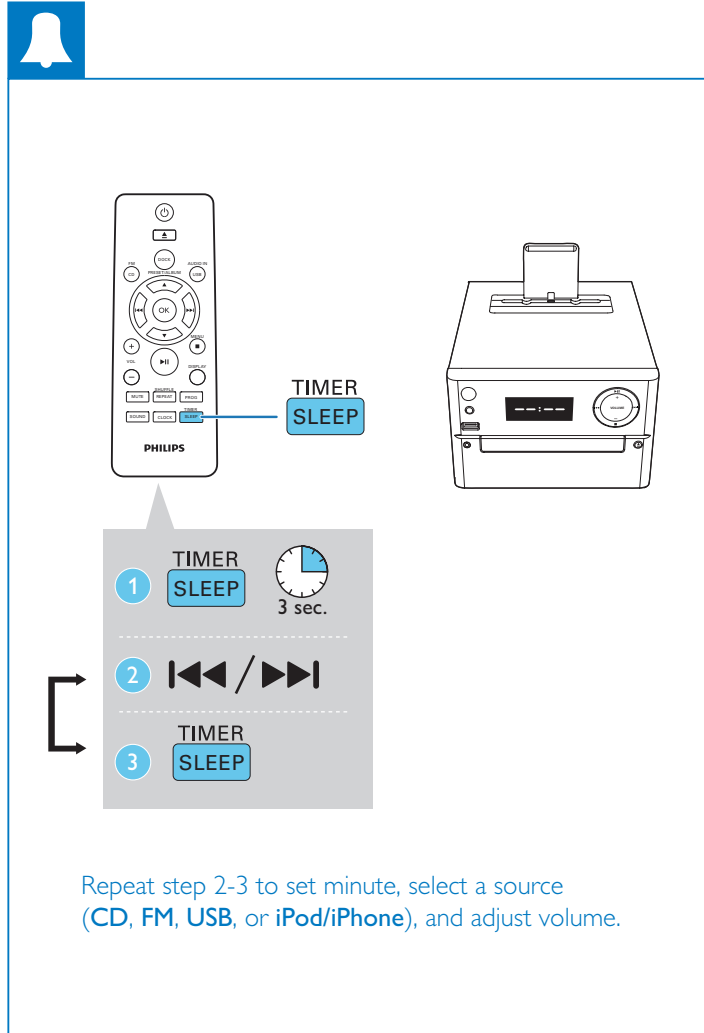
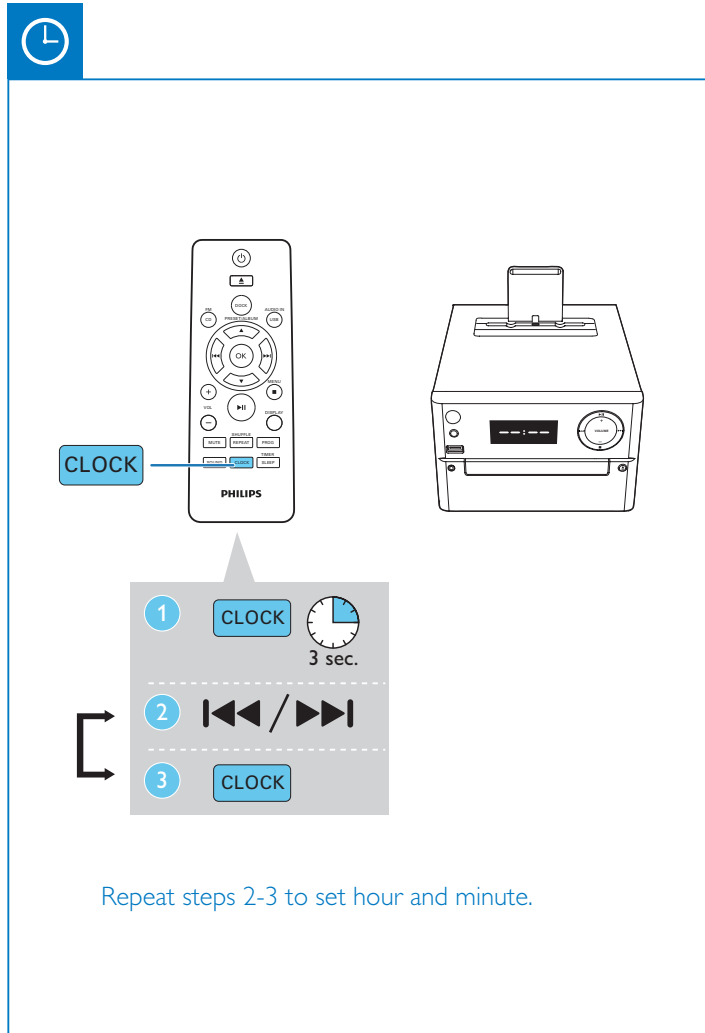
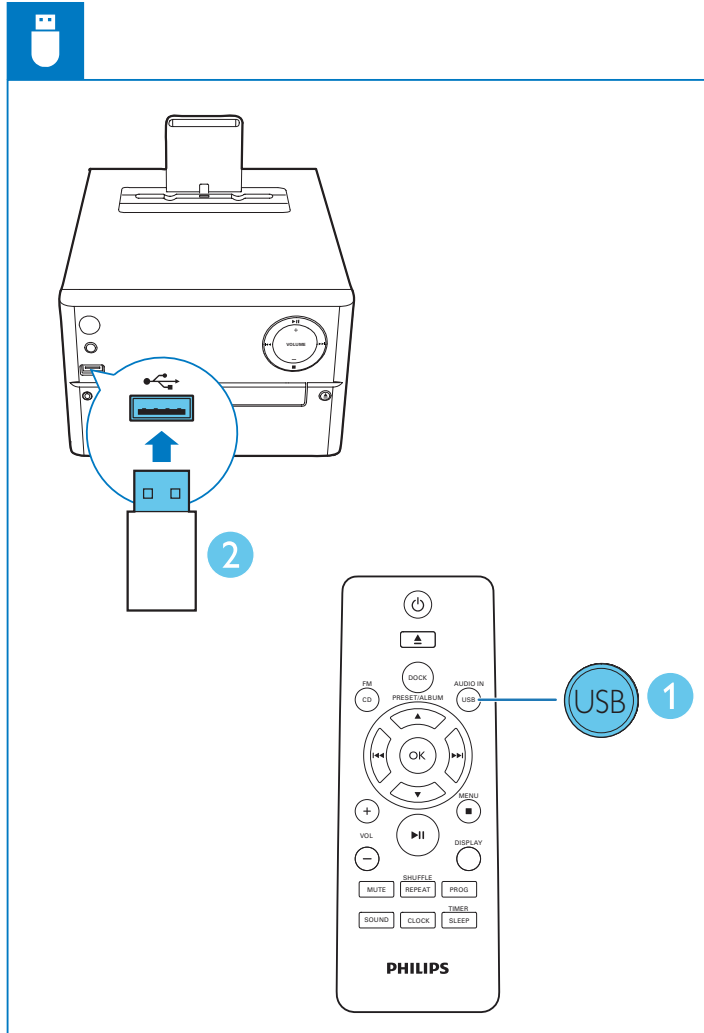
1. Press FM.
2. Press PROG.
3. Press ▲ / ▼.
4. Press PROG.



Specifications are subject to change without notice
 © 2013 Koninklijke Philips Electronics N.V.
 All rights reserved.

DCM1170_93_Short User Manual_V1.0





Specifications

Maximum Output Power	20 W
Tuning Range	87.5-108 MHz
Tuning grid	50 KHz
USB Direct Version	2.0 full speed
USB 5 V Power	≤500 mA
Disc Diameter	12 cm/8 cm
Support Disc	CD-DA, CD-R, CD-RW, MP3-CD
AC power	100-240 V~, 50/60 Hz
Operation Power Consumption	18 W
Eco Standby Power Consumption	<0,5 W
Dimensions	
- Main Unit (W x H x D)	180 x 177 x 239 mm
- Speaker Box (W x H x D)	120 x 170 x 160 mm
Weight	
- Main Unit	1.5 kg
- Speaker Box	2 x 1.2 kg

English

Important

Safety



This bolt of lightning indicates unshielded material within the device may cause an electrical shock. For the safety of everyone in your household, please do not remove the covering. The exclamation mark calls attention to features for which you should read the enclosed literature closely to prevent operating and maintenance problems.

WARNING: To reduce the risk of fire or electric shock, the device should not be exposed to rain or moisture and objects filled with liquids, such as vases, should not be placed on the device.

CAUTION: To prevent electric shock, fully insert the plug. (For regions with polarized plugs: To prevent electric shock, match wide blade to wide slot.)

Important Safety Instructions

- Follow all instructions.
- Heed all warnings.
- Do not use this device near water.
- Clean only with dry cloth.
- Do not block any ventilation openings. Install in accordance with the manufacturer's instructions.
- Do not install near any heat sources such as radiators, heat registers, stoves, or other devices (including amplifiers) that produce heat.
- Protect the power cord from being walked on or pinched, particularly at plugs, convenience receptacles, and the point where they exit from the device.
- Only use attachments/accessories specified by the manufacturer.
- Use only with the cart, stand, tripod, bracket, or table specified by the manufacturer or sold with the device. When a cart is used, use caution when moving the cart/device combination to avoid injury from tip-over.

- Unplug this device during lightning storms or when unused for long periods of time.
- Refer all servicing to qualified service personnel. Servicing is required when the device has been damaged in any way, such as power-supply cord or plug is damaged, liquid has been spilled or objects have fallen into the device, the device has been exposed to rain or moisture, does not operate normally, or has been dropped.
- Battery usage **CAUTION** – To prevent battery leakage which may result in bodily injury, property damage, or damage to the unit:
 - Install all batteries correctly, + and - as marked on the unit.
 - Do not mix batteries (old and new or carbon and alkaline, etc.).
 - Batteries (packed or installed) shall not be exposed to excessive heat such as sunshine, fire or the like.
 - Remove batteries when the unit is not used for a long time.
 - The device shall not be exposed to dripping or splashing.
 - Do not place any sources of danger on the device (e.g. liquid filled objects, lighted candles).
 - Where the MAINS plug or an appliance coupler is used as the disconnect device, the disconnect device shall remain readily operable.

Warning

- Never remove the casing of this device.
- Never lubricate any part of this device.
- Never place this device on other electrical equipment.
- Keep this device away from direct sunlight, naked flames or heat.
- Never look into the laser beam inside this device.
- Ensure that you always have easy access to the power cord, plug, or adaptor to disconnect this device from the power.

Notice

Any changes or modifications made to this device that are not expressly approved by Philips Consumer Lifestyle may void the user's authority to operate the equipment.

Your product is designed and manufactured with high quality materials and components, which can be recycled and reused.

Never dispose of your product with other household waste. Please inform yourself about the local rules on the separate collection of electrical and electronic products and batteries. The correct disposal of these products helps prevent potentially negative consequences on the environment and human health.

Your product contains batteries, which cannot be disposed of with normal household waste. Please inform yourself about the local rules on separate collection of batteries. The correct disposal of batteries helps prevent potentially negative consequences on the environment and human health.

Please visit www.recycle.philips.com for additional information on a recycling center in your area.

Environmental information
All unnecessary packaging has been omitted. We have tried to make the packaging easy to separate into three materials: cardboard (box), polystyrene foam (buffer) and polyethylene (bags, protective foam sheet).

Your system consists of materials which can be recycled and reused if disassembled by a specialized company. Please observe the local regulations regarding the disposal of packaging materials, exhausted batteries and old equipment.



The making of unauthorized copies of copy-protected material, including computer programs, files, broadcasts and sound recordings, may be an infringement of copyrights and constitute a criminal offence. This equipment should not be used for such purposes.



"Made for iPod" and "Made for iPhone" mean that an electronic accessory has been designed to connect specifically to iPod or iPhone respectively, and has been certified by the developer to meet Apple performance standards. Apple is not responsible for the operation of this device or its compliance with safety and regulatory standards. Please note that the use of this accessory with iPod or iPhone may affect wireless performance.

iPod and iPhone are trademarks of Apple Inc., registered in the U.S. and other countries. This apparatus includes this label:



Note

- The type plate is located on the back of the device.

PHILIPS

sense and simplicity

Philips Electronics Australia Limited and Philips New Zealand Limited

Warranty against Defects

In this warranty:
We or us means Philips Electronics Australia Limited ACN 008 445 743 or Philips New Zealand Limited (Company Number 1723), and our contact details are set out at the end of this warranty;
You means the purchaser or the original end-user of the Goods;
Supplier means the authorised distributor or retailer of the Goods that sold you the Goods in Australia or New Zealand; and
Goods means the product or equipment which was accompanied by this warranty and purchased in Australia or New Zealand.

If you require assistance with the operation of the product, its features or specifications please call the Philips Consumer Care Centre on 1300 363 391 in Australia or 0800 658 224 in New Zealand.

Australia: Our Goods come with warranties that cannot be excluded under the Australian Consumer Law. You are entitled to a replacement or refund for a major failure and for compensation for any other reasonably foreseeable loss or damage. You are also entitled to have the Goods repaired or replaced if the goods fail to be of acceptable quality and the failure does not amount to a major failure. This is not a complete statement of your legal rights as a consumer.

New Zealand: Our Goods come with guarantees that cannot be excluded under the Consumer Guarantees Act 1993. This guarantee applies in addition to the conditions and guarantees implied by that legislation.

Additional Warranty: In addition to the rights and remedies that you have under the Australian Consumer Law, Consumer Guarantees Act of New Zealand or any other applicable law, we provide the following warranty against defects:

- If, during the first 12 months from their date of purchase from the Supplier (**Warranty Period**), the Goods prove defective by reason of improper workmanship or materials and none of your statutory rights or remedies apply, we will repair or replace the Goods without charge.
 - We do not have to repair or replace the Goods under this Additional Warranty if the Goods have been used for a commercial purpose, misused, improperly or inappropriately installed, operated or repaired; damaged; or not maintained in accordance with the manufacturer's instructions.
 - Even when we do not have to repair or replace the Goods, we may decide to do so anyway. In some cases, we may decide to substitute the Goods with a similar alternative product of our choosing. All such decisions are at our absolute discretion.
 - All such repaired, replaced or substituted Goods continue to receive the benefit of this Additional Warranty for the time remaining on the original Warranty Period.
 - This Additional Warranty is limited to repair, replacement or substitution only. As far as the law permits, we will not be liable for any loss or damage caused to property or persons arising from any cause whatsoever.
 - In order to claim under this Additional Warranty you must telephone us on 1300 363 391 in Australia or 0800 658 224 in New Zealand within the Warranty Period. You will be asked for details of the Goods, a description of the defect and your personal details. Upon accepting your claim, we shall assist you with either returning the Goods to the Supplier for replacement or to the most convenient Philips Authorised Service Centre for your Goods to be repaired. In some cases we may require that you return to the Goods to us (at the address below) for repair, replacement or substitution.
- * All returned Goods must be accompanied by satisfactory proof of purchase which clearly indicates the name and address of the Supplier, the date and place of purchase and identifies product. It is best to provide a legible and unmodified receipt or sales invoice.
- * You must bear any expense for return of the Goods or otherwise associated with making your claim under this Additional Warranty.
- * This warranty is only valid and enforceable in Australia and New Zealand.

Contact us or the place of purchase for further details.

Philips Electronics Australia Limited
 Level 1, 65 Epping Rd,
 North Ryde, SYDNEY NSW 2113
Consumer Care: 1300 363 391
E-mail: rcainfo.australia@philips.com
Website: www.philips.com/support

Philips New Zealand Limited
 Level 2, 1 Nugent St,
 Grafton, AUCKLAND, 1023
Consumer Care: 0800 658 224
Email: rcainfo.australia@philips.com
Website: www.philips.com/support