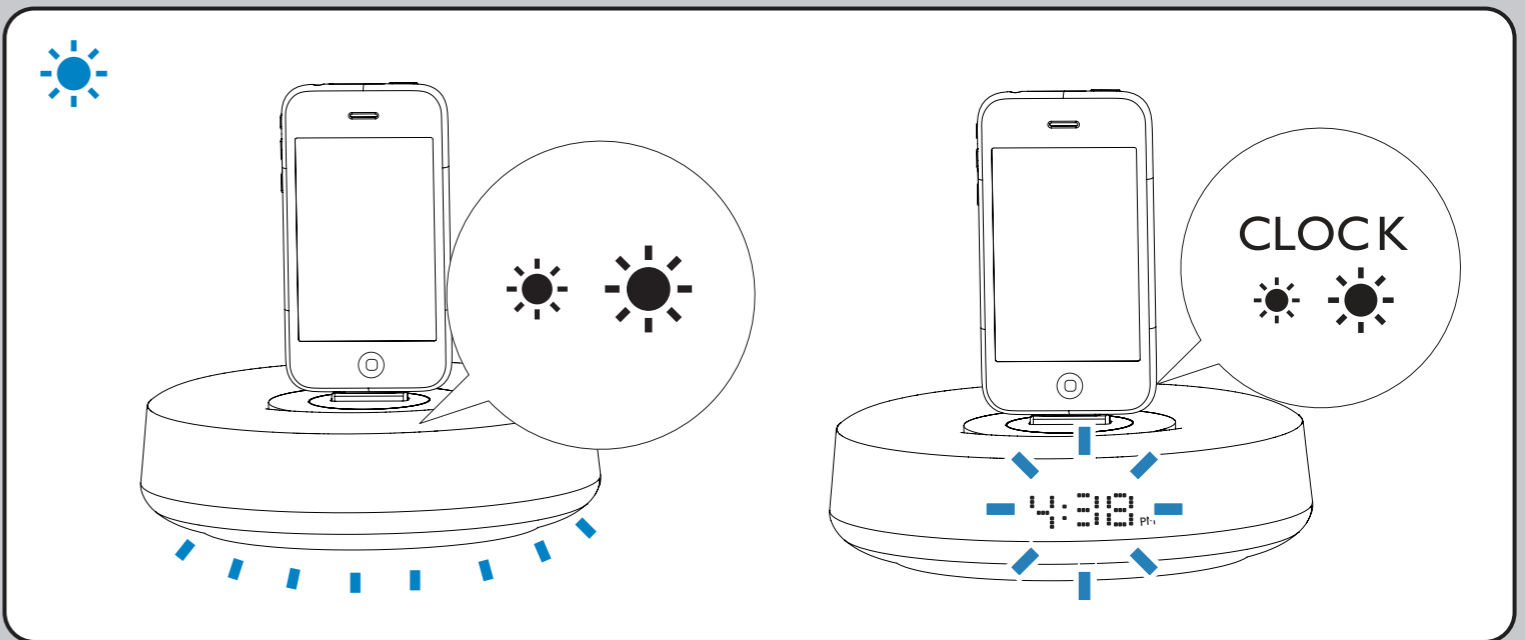
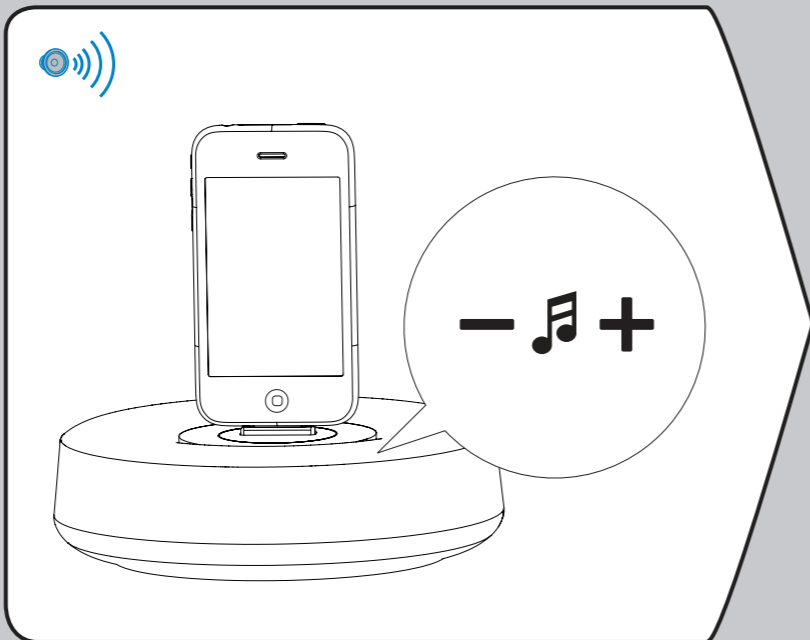



DS1100


Quick start guide **English**
快速啟用指南 **繁體中文**



Important safety instructions

- ① Read these instructions.
- ② Keep these instructions.
- ③ Heed all warnings.
- ④ Follow all instructions.
- ⑤ Do not use this apparatus near water.
- ⑥ Clean only with dry cloth.
- ⑦ Do not block any ventilation openings. Install in accordance with the manufacturer's instructions.
- ⑧ Do not install near any heat sources such as radiators, heat registers, stoves, or other apparatus (including amplifiers) that produce heat.
- ⑨ Protect the power cord from being walked on or pinched, particularly at plugs, convenience receptacles, and the point where they exit from the apparatus.
- ⑩ Only use attachments/accessories specified by the manufacturer.
- ⑪ Use only with the cart, stand, tripod, bracket, or table specified by the manufacturer or sold with the apparatus. When a cart is used, use caution when moving the cart/apparatus combination to avoid injury from tip-over. 
- ⑫ Unplug this apparatus during lightning storms or when unused for long periods of time.
- ⑬ Refer all servicing to qualified service personnel. Servicing is required when the apparatus has been damaged in any way, such as power-supply cord or plug is damaged, liquid has been spilled or objects have fallen into the apparatus, the apparatus has been exposed to rain or moisture, does not operate normally, or has been dropped.
- ⑭ Apparatus shall not be exposed to dripping or splashing.
- ⑮ Do not place any sources of danger on the apparatus (e.g. liquid filled objects, lighted candles).

重要安全性指示

- ① 閱讀這些指示。
- ② 妥善保存這些指示。
- ③ 注意所有警告文字。
- ④ 遵循所有指示。
- ⑤ 請勿在近水處使用本產品。
- ⑥ 清潔時僅能使用乾布。
- ⑦ 請勿阻塞任何通風口。依照製造商的指示進行安裝。
- ⑧ 請勿將本產品安裝在接近熱源處，例如暖器裝置、暖氣孔、火爐或其他會產生高溫的產品（包括擴大機在內）。
- ⑨ 妥善保護電源線，避免踩踏或夾壓，尤其是插頭、便利插座，以及電源線與產品連接處。
- ⑩ 只使用廠商指定的附件/配件。
- ⑪ 只使用廠商指定或隨產品一起銷售的推車、底座、三腳架、支架或桌子。用推車移動本產品時應謹慎，避免因翻倒而造成傷害。 
- ⑫ 遇有雷雨或長時間不使用時，請將本產品的插頭拔下。
- ⑬ 所有維修服務應委託合格的服務人員處理。當本產品因任何原因損壞時，例如電源線或插頭損壞、液體潑濺、物品掉入產品內部、產品淋到雨與受潮、無法正常運作或掉落等，均須進行維修。
- ⑭ 請勿將本產品置於滴水或濺水環境。
- ⑮ 請勿在本產品上放置危險物品（如裝滿液體的物品、點燃的蠟燭等）。

The type plate is located in the battery compartment of the apparatus.
機型牌位於產品電池插槽內。

Where the Mains plug is used as the disconnect device, the disconnect device shall remain readily operable.

在電源插頭或電器連接器作為中斷連接裝置之處，中斷連接裝置應保持隨時可操作。

1 X certified AC/DC adapter Brand name: PHILIPS,
Model No: OH-1018A0602400U-VDE, OH-1018A0602400U-UK,,
OH-1018A0602400U-UL

Input: 100-240V~50/60Hz 650mA

Output: 6V $\overline{\sim}$ 2.4A

1 X 認證 AC/DC 變壓器商標：PHILIPS；

型號：OH-1018A0602400U-VDE, OH-1018A0602400U-UK,
OH-1018A0602400U-UL；

輸入：100-240V~50/60Hz 650mA；

輸出：6V $\overline{\sim}$ 2.4A；

