

# Always there to help you

Register your product and get support at  
[www.philips.com/support](http://www.philips.com/support)



InSightHD M120E

InSight HD M120G



***InSightHD***



## User manual

**PHILIPS**



# Contents

---

<b>1</b>	<b>Important safety instructions</b>	<b>3</b>
	Safety	3
	Compliance	3
	Care of the environment	4
	Notice	5
	Written Offer	5

---

<b>2</b>	<b>Your new monitor</b>	<b>6</b>
	Overview	6
	Mount on a wall	7

---

<b>3</b>	<b>Setup</b>	<b>8</b>
	Set up your monitor	8
	Manage your monitors	10
	Add a monitor	10
	Share a monitor	11
	Delete a monitor	12
	Rename a monitor	13
	Change to another account	13
	Log out of current account	13
	Reset	14

---

<b>4</b>	<b>Use</b>	<b>16</b>
	Check network connection	16

Watch live video	17
Use the InSightHD app	17
Use the Web browser	20
Set notifications	20
View events	21
View notifications through subscription	23
<b>5 Check for updates</b>	<b>24</b>
Check for firmware updates of the monitor	24
Upgrade the monitor online	24
Check for updates of the app	25
<b>6 Specifications</b>	<b>26</b>
General information	26
Lens	26
Sensors	26
Video	27
Audio	27
<b>7 Warranty</b>	<b>28</b>



This product complies with the requirement of the 1999/5/EC directive.



#### Note

- The type plate is located on the bottom of the product.

#### Declaration of conformity

Hereby, Gibson Innovations declares that this product is in compliance with the essential requirements and other relevant provisions of Directive 1999/5/EC. You can find the Declaration of Conformity on [www.p4c.philips.com](http://www.p4c.philips.com).

---

## Care of the environment

#### Environmental information

All unnecessary packaging has been omitted. We have tried to make the packaging easy to separate into three materials: cardboard (box), polystyrene foam (buffer) and polyethylene (bags, protective foam sheet.)

Your system consists of materials which can be recycled and reused if disassembled by a specialized company. Please observe the local regulations regarding the disposal of packaging materials, and old equipment.

#### Disposal of your old product



Your product is designed and manufactured with high quality materials and components, which can be recycled and reused.



This symbol on a product means that the product is covered by European Directive 2012/19/EU. Inform yourself about the local separate collection system for electrical and electronic products. Follow local rules and never dispose of the product with normal household waste. Correct disposal of old products helps prevent negative consequences for the environment and human health.

---

## Notice

### Disclaimer

- If you are on a remote Wi-Fi network or 3G connection, 10 seconds to 15 seconds delay in video and audio streaming to your smartphone can occur. Your use of **Philips InSightHD**, which is provided by iVideon Inc., is at your sole risk. Gibson Innovations and its subsidiary companies (individually and collectively "Gibson Innovations") are not responsible for the operation of such **Philips InSightHD** or your use thereof and Gibson Innovations shall have no liability to you related thereto.
- This home monitor is intended as an aid. It is not a substitute for home security supervision and should not be used as such.

\* Wireless and Ethernet LAN functions are authorized for indoor use only.

---

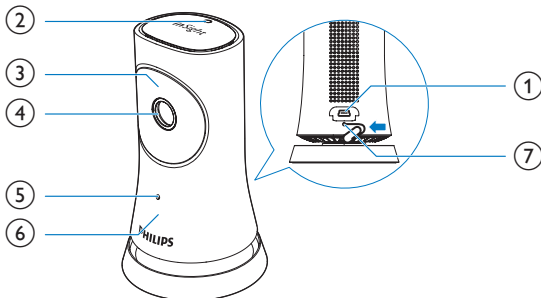
### Written Offer

Gibson Innovations hereby offers to deliver, upon request, a copy of the complete corresponding source code for the copyrighted open source software packages used in this product for which such offer is requested by the respective licenses. This offer is valid up to three years after product purchase. To obtain source code, please contact [open.source@philips.com](mailto:open.source@philips.com). If you prefer not to use email or if you do not receive confirmation receipt within a week after mailing to this email address, please write to Open Source Team, Gibson Innovations Limited, 5/F, Philips Electronics Building, 5 Science Park East Avenue, Hong Kong Science Park, Shatin, New Territories, Hong Kong. If you do not receive timely confirmation of your letter, please email to the email address above.

Specifications are subject to change without notice. Philips and the Philips' Shield Emblem are registered trademarks of Koninklijke Philips N.V. and are used under license from Koninklijke Philips N.V.. Gibson Innovations reserves the right to change products at any time without being obliged to adjust earlier supplies accordingly.

## 2 Your new monitor

### Overview



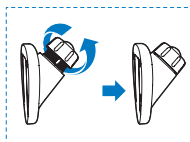
- ① **USB connector**
  - for connection with the supplied AC/DC power adapter through a USB cable
- ② **Light sensor**
- ③ **IR LED**
- ④ **Camera lens**
- ⑤ **Microphone**
- ⑥ **Status LED**
- ⑦ **RESET**
  - Press the hole by using the tip of a paper clip.



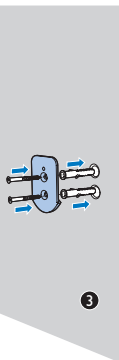
## Mount on a wall



1



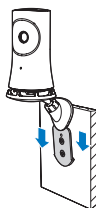
2



3



4



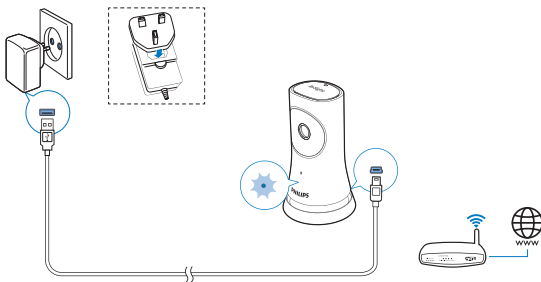
5

## 3 Setup

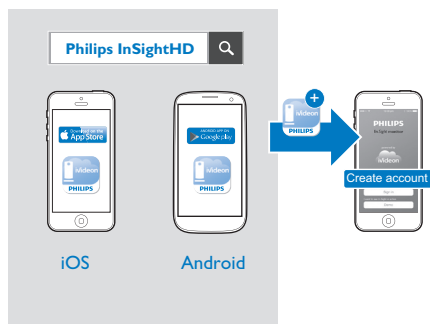
### Set up your monitor

With the **Philips InSightHD** app, you can watch and listen to your home through your mobile device.

- 1 Place the monitor as close to your wireless router as possible to ensure the best connection.



- 2 Download and install the **Philips InSightHD** app.
  - ① Create your account.
  - ② Follow the onscreen instructions to complete the setup.



Hold your mobile device steadily during the scanning of QR code.

- 3 Check the status indicator to get information about the setup and connection status:

Indicator	Status of the monitor
Solid amber	Power-on and system start-up

Slow flashing amber	Ready for setup through Wi-Fi and QR code
Quick flashing green	QR code received by the <b>Philips InSightHD</b> app
Solid green	Successful connection through the <b>Philips InSightHD</b> app

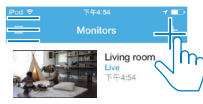
- ➔ After successful connection, you register the monitor under your account in the **Philips InSightHD** app.

## Manage your monitors

In the **Philips InSightHD** app, you can add or remove monitors to/ from your account, and share the monitors to your family or friends.

### Add a monitor

- 1 On the Home screen, tap +.



- 2 Follow the onscreen instructions to complete the setup.

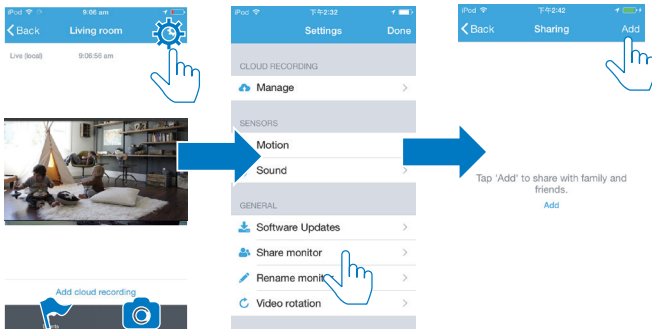


## Note

- Make sure that your monitor is supported by the **Philips InSightHD** app

## Share a monitor

- Go to the play screen (see 'Use the InSightHD app' on page 17).
- Tap **:** / **⚙** to select **⋮**.
- Tap **Add**.

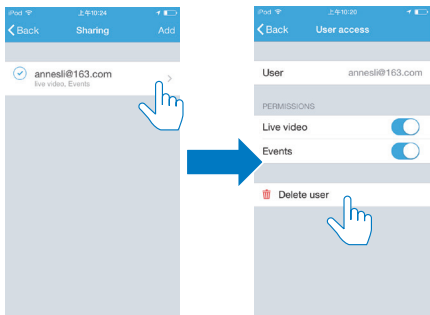


- Follow the onscreen instructions to enter an Email.
  - ➔ An invitation is sent to the recipient.
  - ➔ To become a user, the recipient needs to create an account by following the onscreen instructions.

## Stop sharing the monitor

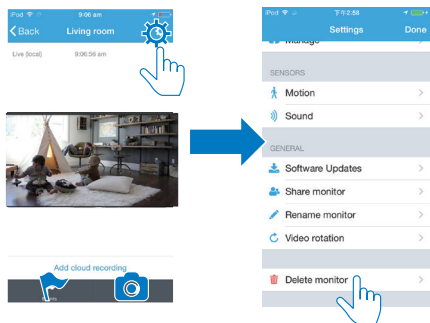
Remove a user to stop sharing the monitor to the user.

- In **⋮**, select the user and then, tap **🗑**.



## Delete a monitor

- Go to the play screen (see 'Use the InSightHD app' on page 17). Tap / to select .



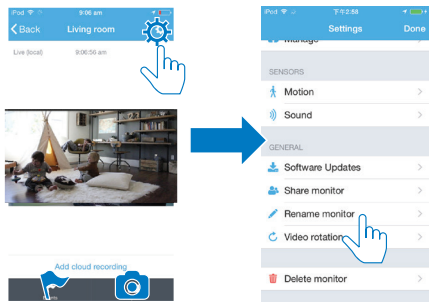
### Tip

- Delete the monitor from your account when you change to another account.

---

## Rename a monitor

- Go to the play screen (see 'Use the InSightHD app' on page 17). Tap  /  to select .



---

## Change to another account

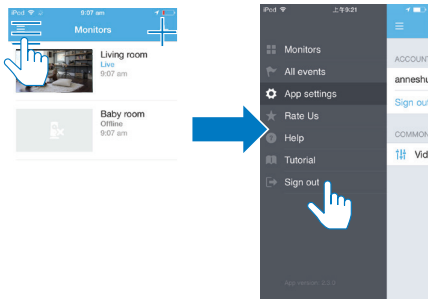
- 1 Delete your monitors from current account (see 'Delete a monitor' on page 12).
- 2 On your mobile device, launch the **Philips InSightHD** app. Log in to the new account.
- 3 Add your monitors (see 'Add a monitor' on page 10).

---

## Log out of current account

To log in to another account, do the following to log out of current account:

- On the Home screen, tap  to select .



## Reset

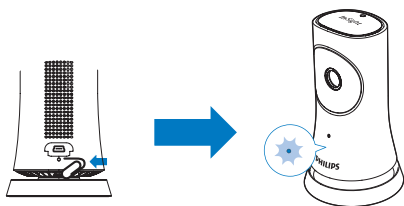
Reset Wi-Fi connection when:

- there are Wi-Fi connection problems with the monitor.

Indicator	Status of the monitor
Slow flashing amber	Local Wi-Fi connection lost

- By using the tip of a paper clip, briefly press the **RESET** hole and, then release.
  - ↳ The status indicator turns solid amber.
  - ↳ When the status indicator flashes in amber slowly, follow the onscreen setup steps.
  - ↳ When the status indicator turns solid green, the connection is complete successfully.



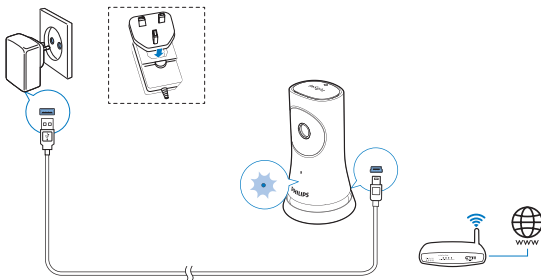


## 4 Use

### Check network connection

After successful connection through the **Philips InSightHD** app, the monitor allows you to watch or listen to your home on your mobile device through local Wi-Fi network, and through mobile network remotely.

- On the monitor, make sure that the status indicator is in solid green.



If the status indicator is in the following states, check the connection problems of the monitor:

Status indicator	Slow flashing amber
Problems	Problems with the connection to local Wi-Fi network
Solution	Reset the Wi-Fi connection

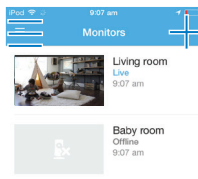


#### Tip

- If you have changed to a new wireless router, follow Step 1 to 3 of the Start wizards to connect your monitor to the new router (see 'Add a monitor' on page 10).

Status indicator	Slow flashing green
Problems	Problems with the connection to the Internet
Solution	Check the Internet connection of of the network that your monitor is connected to.

- On your mobile device, check the network connection through the online/offline detection of the **Philips InSightHD** app.

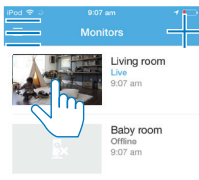


If the monitor is displayed as offline on your mobile device, check the Internet connection of the network that your mobile device is connected to.

## Watch live video

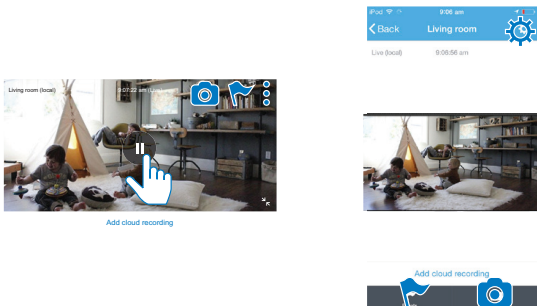
### Use the InSightHD app

- On the Home screen, tap the thumbnail to watch live video.



➡ You go to the play screen.

- 2 On the play screen of live video, tap on the video to pause and resume video play.



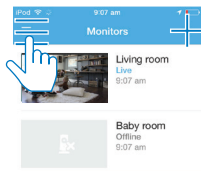
- 3 On the screens, tap the icons to select options:
  - ⊕ : Add more monitors to your current account in the **Philips InSightHD** app.
  - ≡ : Go to the options menu.
  - ⋮ / ⚙ : Select setting options for current monitor.
  - 🔔 : Check notifications.

 : Take snapshots of current scene.

## Select video quality

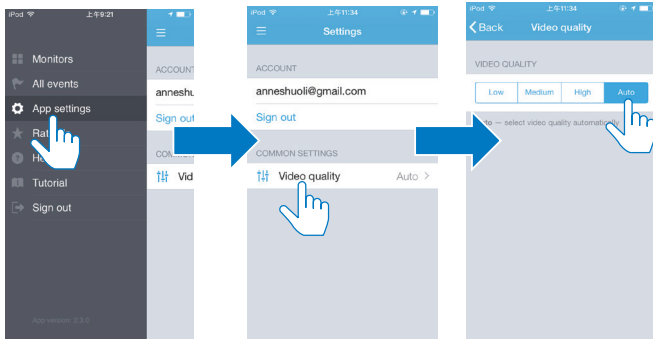
Select video quality to improve the video streaming performance in poor network environment.

1 On the Home screen, tap .



2 Select  > .

- **Auto:** The monitor determines the best setting for video streaming.
- **Low/Medium/High:** Select the video quality according to current Internet connection.



## Use the Web browser

Go to <http://insight.ivideon.com> to watch live video. Log in to your account under Philips InSightHD.

## Set notifications



Motion and sound notifications keep you informed of changes at home. Select the sensitivity level as needed.

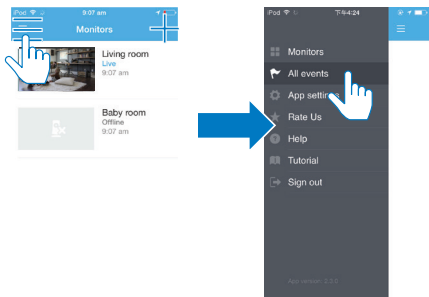
- 1 To set notifications, make sure that the monitor is online (see 'Check network connection' on page 16).  
 ↳ When the monitor is online, you can select options for notifications.
- 2 On the play screen, tap **:** / **⚙**.
- 3 Tap **👤** or **🔊** to go to the options menu for motion detection or sound detection:
  - ① Drag the slider to switch on or off.
  - ② Select the sensitivity level as needed.


- ③ For motion detection, drag the corners of the frame to select the area of detection.

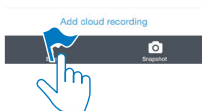
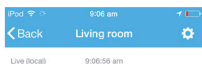


## View events

- For events that are triggered by motion or sound detection, you can receive push notifications on your mobile device by setting notifications; or
- check the list of events on your mobile device by doing the following:  
On the Home screen, tap  > .



↳ You can check the list of events on all the monitors.  
Alternatively, tap  on the play screen.





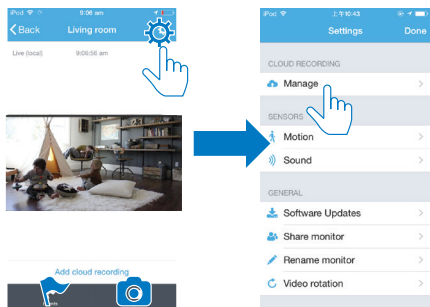
↳ You can check the list of events on current monitor.



## View notifications through subscription

By subscribing services, you can record videos to the cloud storage for the events that have been triggered by motion or sound detection.

1 On the play screen, tap  /  to select .






2 Select a subscription option as needed.

## 5 Check for updates

---

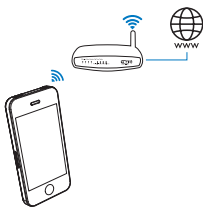
### Check for firmware updates of the monitor




- Go to the play screen (see 'Use the InSightHD app' on page 17). Tap  /  > .

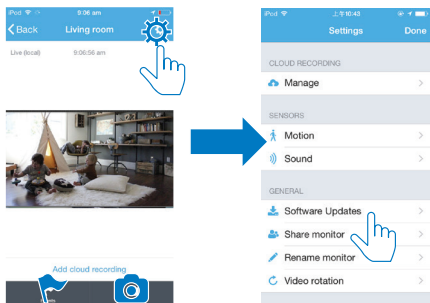
---

### Upgrade the monitor online

- 1 Connect your mobile device to a Wi-Fi network.



- 2 Go to the play screen (see 'Use the InSightHD app' on page 17). Tap  /  > .



- 3 Follow the onscreen instructions to complete the upgrading.

---

## Check for updates of the app

For updates of the **Philips InSightHD** app, you can receive messages on your mobile device. Follow the onscreen instructions to complete the updating.

# 6 Specifications

---

## General information

- **AC power adapter**  
Model: HNB050150X (X = E, B, A, C, U, J, K, and C)  
a direct plug-in power adapter with USB output terminal and a different country plug type (E = EU plug, B = UK plug, A = Australia plug, U = USA plug, J = Japanese plug, K= Korean plug, C = China plug)  
Input: AC 100-240 V~ 50/60 Hz, 0.35 A MAX  
Output: 5 V DC, 1.5 A
- **Connectivity**  
Wi-Fi 802.11 b/g/n, 2.4 GHz
- **Apps**  
Platform: iOS 7 or later (including iPhone 4S, iPhone 5, iPhone 5C, iPhone 5S, iPhone 6, iPhone 6 Plus, iPad 3rd generation, iPad 4th generation, iPad Air, iPad Air 2, iPod touch 5th generation), Android 4.1 or later

---

## Lens

- **Focus mode**  
Fixed
- **Viewing angle (diagonal)**  
102 degrees
- **Night mode**  
IR LED, 4 meters

---

## Sensors

- **Ambient light sensor**

- **IR LED**  
IR range: 4 meters
- 

## Video

- **Resolution**  
Streaming through Wi-Fi: 720p (High definition)
  - **Video format**  
H.264
- 

## Audio

- **Input**  
High-sensitive mono microphone
- **Output power:** 0.5 W

## 7 Warranty

To get the warranty information about your product, go to [www.philips.com/support](http://www.philips.com/support).





2015 © Gibson Innovations Limited. All rights reserved.

This product has been manufactured by, and is sold under the responsibility of Gibson Innovations Ltd., and Gibson Innovations Ltd. is the warrantor in relation to this product.

Philips and the Philips Shield Emblem are registered trademarks of Koninklijke Philips N.V. and are used under license from Koninklijke Philips N.V.

