



Philips  
Headphones

14.2 mm drivers/open-back  
Ear bud

SHE3200CR



## Rich bass, clear sound

Designed to comfortably fit the shape of your ear

Designed for optimal fit and comfort, the SHE3200 earphones feature 14.2 mm drivers and bass vents for rich bass and clear sound. Available in a choice of 6 vibrant colours to match your Apple watch.

### Enjoy quality sound

- 14.2 mm speaker drivers for rich bass and clear sound
- Neodymium magnets enhance bass performance

### Ultimate wearing comfort

- Designed to comfortably fit the shape of your ear

### Design for convenience

- Flexi-Grip design for durability

# PHILIPS

Headphones  
14.2 mm drivers/open-back Ear bud

# Specifications

## Design

- Colour: Pink

## Sound

- Acoustic system: open
- Magnet type: Neodymium
- Impedance: 32 ohm
- Maximum power input: 30 mW
- Sensitivity: 107 dB

- Speaker diameter: 14.2 mm
- Frequency response: 8–24,000 Hz

## Connectivity

- Cable Connection: two-parallel, symmetric
- Cable length: 1 m
- Connector: 3.5 mm
- Finishing of connector: nickel plated
- Type of cable: copper

SHE3200CR/27

# Highlights

## 14.2 mm speaker drivers

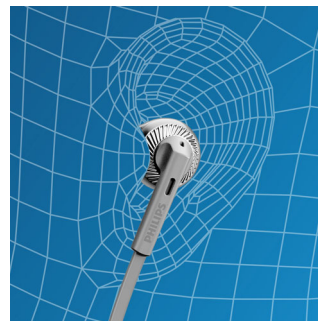


Quality 14.2 mm speaker drivers with neodymium magnet delivers rich bass and clear sound.

## Designed for comfort

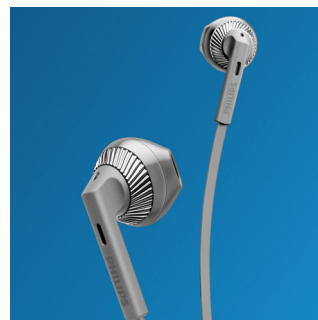
The design is based on ear geometry for comfortable wear and a snug fit for everyone.

## Flexi-Grip



A soft, flexible part that connects the housing and the cable protects the cable connection from damage, even if bended heavily.

## Neodymium magnets



Neodymium is the best material for producing a strong magnetic field for greater sensitivity in a voice coil, providing a better bass response and higher overall sound quality.



Issue date 2016-07-20

Version: 1.0.5

12 NC: 8670 001 28851  
UPC: 8 89446 00302 4

© 2016 Koninklijke Philips N.V.  
All Rights reserved.

Specifications are subject to change without notice.  
Trademarks are the property of Koninklijke Philips N.V.  
or their respective owners.

[www.philips.com](http://www.philips.com)