

Always there to help you

Register your product and get support at
www.philips.com/welcome

SBM130



User Manual

PHILIPS

Contents

1	Important	3
	Hearing Safety	3

2	Your Portable Speaker	4
	Introduction	4
	What's in the box	4
	Overview of the speaker	5

3	Get started	6
	Power supply	6
	Turn on/off	6
	Select a source	6

4	Play	7
	Play from Micro SD card	7
	Play from USB device	7
	Play from an external device	7
	Listen to FM radio	7
	Listen through the headphone	8
	Adjust volume	8

5	Product information	8
	Specifications	8
	USB playability information	9

6	Troubleshooting	9
----------	------------------------	----------

7	Notice	10
	Disposal of your old product and batteries	10

1 Important

- Read these instructions.
- Heed all warnings.
- Follow all instructions.
- Do not use this speaker near water.
- Do not install near any heat sources such as radiators, heat registers, stoves, or other apparatus (including amplifiers) that produce heat.
- Only use attachments/accessories specified by the manufacturer.
- Refer all servicing to qualified service personnel. Servicing is required when the speaker has been damaged in any way, such as liquid has been spilled or objects have fallen into the speaker; the speaker has been exposed to rain or moisture, does not operate normally, or has been dropped.
- The battery shall not be exposed to excessive heat such as sunshine, fire or the like.
- Speaker shall not be exposed to dripping or splashing.
- Do not place any sources of danger on the speaker (e.g. liquid filled objects, lighted candles).

Hearing Safety



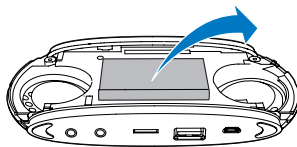
Danger

- To avoid hearing damage, limit the time you use the headphones at high volume and set the volume to a safe level. The louder the volume, the shorter is the safe listening time.

Be sure to observe the following guidelines when using your headphones.

- Listen at reasonable volumes for reasonable periods of time.
- Be careful not to adjust the volume continuously upwards as your hearing adapts.
- Do not turn up the volume so high that you can't hear what's around you.
- You should use caution or temporarily discontinue use in potentially hazardous situations.
- Excessive sound pressure from earphones and headphones can cause hearing loss.

Always bring your product to a professional to remove the built-in battery.



2 Your Portable Speaker

Congratulations on your purchase, and welcome to Philips! To fully benefit from the support that Philips offers, register your product at www.philips.com/welcome.

Introduction

With this speaker, you can:

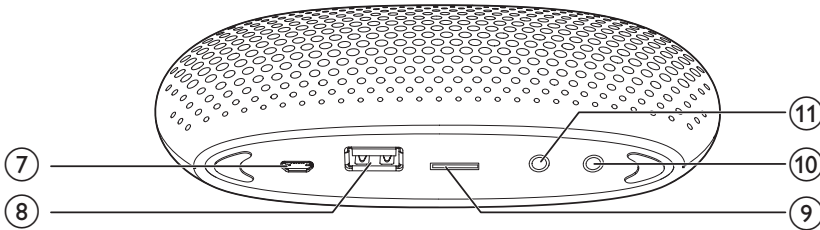
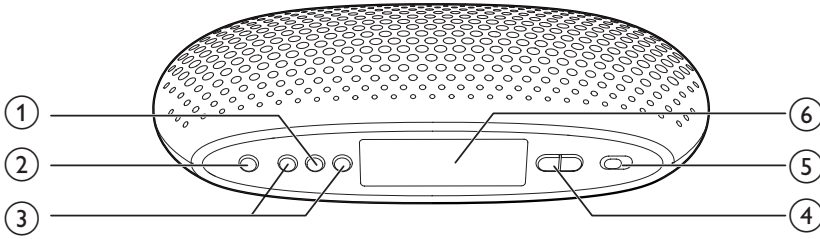
- listen to FM radio;
- enjoy audio from Micro SD card, USB storage devices, and other external devices.

What's in the box

Check and identify the contents of your package:

- Main unit
- USB cable X 1
- Aux-in cable X 1
- FM antenna X 1
- Quick start guide

Overview of the speaker



- | | |
|--|---|
| <p>① ▶ </p> <ul style="list-style-type: none">• Start or pause play. <p>② S</p> <ul style="list-style-type: none">• Select an audio source. <p>③ ◀◀ / ▶▶</p> <ul style="list-style-type: none">• Select a track.• Search within play.• Tune to FM radio stations. <p>④ -/+</p> <ul style="list-style-type: none">• Adjust volume. <p>⑤ ⓪</p> <ul style="list-style-type: none">• Turn the speaker on or off. | <p>⑥ Display panel</p> <p>⑦ DC 5V</p> <ul style="list-style-type: none">• Charge the built-in battery. <p>⑧ 🔌</p> <ul style="list-style-type: none">• Connect a USB storage device. <p>⑨ MICRO SD</p> <ul style="list-style-type: none">• Micro SD card slot. <p>⑩ 🎧</p> <ul style="list-style-type: none">• Headphone socket. <p>⑪ AUX</p> <ul style="list-style-type: none">• Connect an external device. |
|--|---|

3 Get started

Always follow the instructions in this chapter in sequence.

If you contact Philips, you will be asked for the model and serial number of this speaker. The model number and serial number are on the bottom of the speaker. Write the numbers here:

Model No. _____

Serial No. _____

Power supply

The speaker can operate on the built-in rechargeable battery.

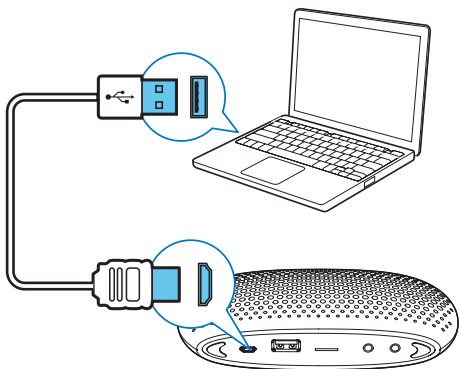
To recharge the built-in battery:

Connect the supplied USB cable to:

- the **DC 5V** socket on the speaker.
- the USB socket of a computer.

↳ The charging icon is displayed.

↳ When the battery is fully charged, the charging icon disappears.



Turn on/off

- 1 Switch the \odot slide to left.
↳ The speaker switches to the last selected source.
- 2 To turn the speaker off, switch the \odot slide to right.

Select a source

Press **S** repeatedly to select an audio source: FM tuner, Aux, USB device, or Micro SD card.

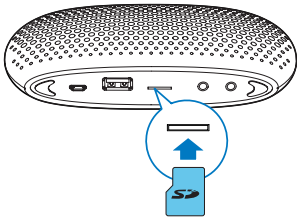
4 Play

Play from Micro SD card

Note

- Make sure that the Micro SD card contains playable audio content.

- 1 Press **S** repeatedly to select the Micro SD card source.
↳ **[SD]** is displayed.
- 2 Insert a Micro SD card into the card slot.
↳ Play starts automatically.



- To pause or resume play, press **▶||**.
- To select an audio file, press **◀◀** or **▶▶**.
- To search during play, press and hold **◀◀** or **▶▶**, then release to resume normal play.


Note

- Due to different materials and product techniques, it cannot be guaranteed that all Micro SD cards will work with this speaker.

Play from USB device

Note

- Make sure that the USB storage device contains playable audio content.

Insert the USB device into the  socket.
↳ **[USB]** is displayed.
↳ Play starts automatically.


Play from an external device

With this speaker, you can also enjoy audio from an external device.

- 1 Press **S** repeatedly to select Aux source.
- 2 Connect the supplied Aux-in cable to:
 - the **AUX** socket on the speaker.
 - the headphone socket on an external device.
- 3 Play audio on the device (see the user manual of the device).

Listen to FM radio


Note

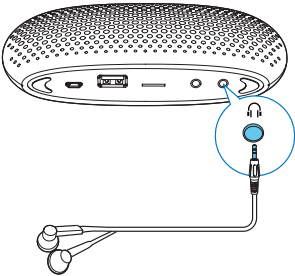
- Keep the portable speaker away from other electronic devices to avoid radio interference.
- For better radio reception, plug the supplied antenna into the **AUX** socket, or listen through the  socket.

- 1 Press **S** repeatedly to select FM tuner source.
- 2 Press and hold **◀◀** or **▶▶** for two seconds.
↳ The speaker tunes to a station with strong reception automatically.
- 3 Repeat step 2 to tune to more radio stations.

To tune to a station with weak signal:
Press ◀◀ or ▶▶ repeatedly until you find better reception.

Listen through the headphone

Plug a headphone into the  socket on the speaker:

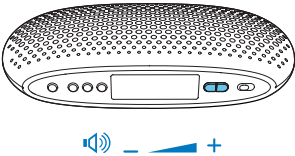


Tip

- When some headphone with mic is plugged, you may hear audio from both the speaker and the headphone. If so, try another headphone.

Adjust volume

During play, press -/+ to adjust volume.



5 Product information

Note

- Product information is subject to change without prior notice.

Specifications

Amplifier

Rated Output Power	2W RMS
Signal to Noise Ratio	>50 dB
Aux Input	600mV RMS, 22 kohm

Tuner (FM)

Tuning Range	87.5-108 MHz
--------------	--------------

General information

Power Supply	5 V, 0.6 A;
Built-in Battery	Lithium battery
Dimensions - Main Unit (W x H x D)	155 x 71 x 37 mm
Weight - Main Unit	0.2 kg

USB playability information

Compatible USB devices:

- USB flash memory (USB1.1)
- USB flash players (USB1.1)
- memory cards (requires an additional card reader to work with this unit; Some multi-card USB reader may not be supported.)

Supported formats:

- USB or memory file format: FAT12, FAT16, FAT32 (sector size: 512 bytes)
- MP3 bit rate (data rate): 32-320 Kbps and variable bit rate
- WMA v9 or earlier
- Directory nesting up to a maximum of 8 levels
- Number of albums/ folders: maximum 99
- Number of tracks/titles: maximum 999
- ID3 tag v2.0 or later
- File name in Unicode UTF8 (maximum length: 16 bytes)

Unsupported formats:

- Empty albums: an empty album is an album that does not contain MP3/WMA files, and is not be shown in the display.
- Unsupported file formats are skipped. For example, Word documents (.doc) or MP3 files with extension .dlf are ignored and not played.
- AAC, WAV, PCM audio files
- DRM protected WMA files (.wav, .m4a, .m4p, .mp4, .aac)
- WMA files in Lossless format

6 Troubleshooting



Warning

- Never remove the casing of this speaker.

To keep the warranty valid, never try to repair the speaker yourself.

If you encounter problems when using this speaker, check the following points before requesting service. If the problem remains unsolved, go to the Philips Web page (www.philips.com/support). When you contact Philips, make sure that the speaker is nearby and the model number and serial number are available.

No power

- Recharge the battery.

No sound

- Adjust volume.
- Check if you have selected the correct audio source.
- Disconnect the headphones.

No response from the speaker

- Turn on the speaker.
- Recharge the battery.

Poor radio reception

- Increase the distance between the speaker and other electrical appliances.
- Fully extend the FM antenna.

USB device not supported

- The USB device is incompatible with the unit. Try another one.

7 Notice



Note

- The type plate is located on the bottom of the speaker.

Any changes or modifications made to this device that are not expressly approved by Philips Consumer Lifestyle may void the user's authority to operate the equipment.

Disposal of your old product and batteries

Your product is designed and manufactured with high quality materials and components, which can be recycled and reused.

Never dispose of your product with other household waste. Please inform yourself about the local rules on the separate collection of electrical and electronic products and batteries. The correct disposal of these products helps prevent potentially negative consequences on the environment and human health.

Your product contains batteries, which cannot be disposed of with normal household waste. Please inform yourself about the local rules on separate collection of batteries. The correct disposal of batteries helps prevent potentially negative consequences on the environment and human health.

Please visit www.recycle.philips.com for additional information on a recycling center in your area.

Environmental information

All unnecessary packaging has been omitted. We have tried to make the packaging easy to separate into three materials: cardboard (box), polystyrene foam (buffer) and polyethylene (bags, protective foam sheet.)

Your system consists of materials which can be recycled and reused if disassembled by a specialized company. Please observe the local regulations regarding the disposal of packaging materials, exhausted batteries and old equipment.



Specifications are subject to change without notice
© 2012 Koninklijke Philips Electronics N.V.
All rights reserved.

SBM130_93_UM_V2.0

