

Always there to help you

Register your product and get support at  
www.philips.com/support

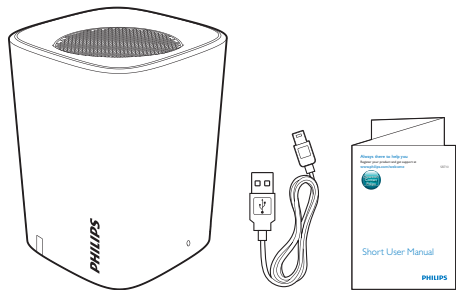


EN Short User Manual

ZH-CN 简明用户手册

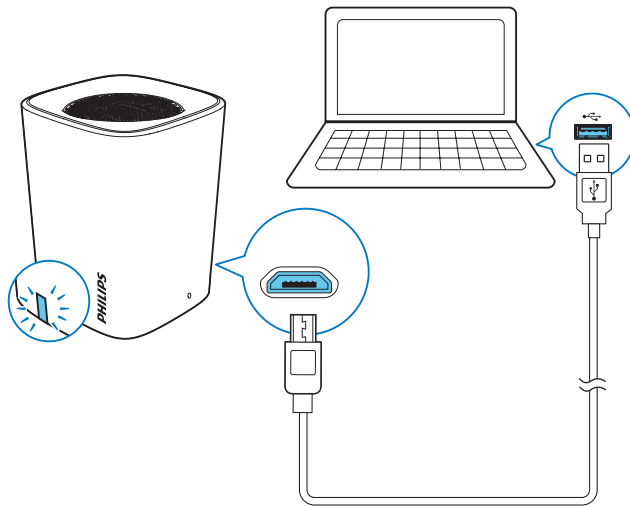
PHILIPS

BT100



EN Before using your product, read all accompanying safety information.

ZH-CN 使用产品之前，请先阅读所有随附的安全信息。



EN

#### Indicator behavior

	Under charging	Battery fully charged
In OFF mode	Flashing white	Off
In Aux-in mode	Flashing white	Solid white
In Bluetooth mode	Flashing blue/Solid blue (follow working status)	Flashing blue/Solid blue (follow working status)

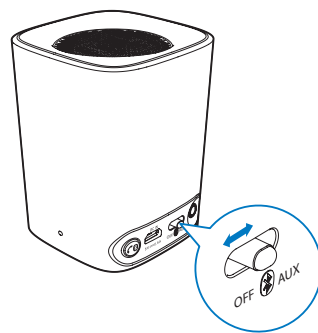
**Note** In Bluetooth mode, when the battery is empty, **BT100** turns off automatically. And the Bluetooth indicator flashes white while recharging. To return to Bluetooth mode, turn **BT100** off and select Bluetooth mode again.

ZH-CN

#### 指示灯状态

	正在充电	电池已完全充满
OFF模式	呈白色闪烁	关
AUX-in模式	呈白色闪烁	呈白色持续亮起
蓝牙模式	呈蓝色闪烁/呈蓝色持续亮起（随工作状态变化）	呈蓝色闪烁/呈蓝色持续亮起（随工作状态变化）

注意：在蓝牙模式下，当电池电量耗尽时，**BT100** 会自动关闭。充电时蓝牙指示灯会呈白色闪烁。要返回蓝牙模式下，请关闭 **BT100**，然后重新选择蓝牙模式。



EN

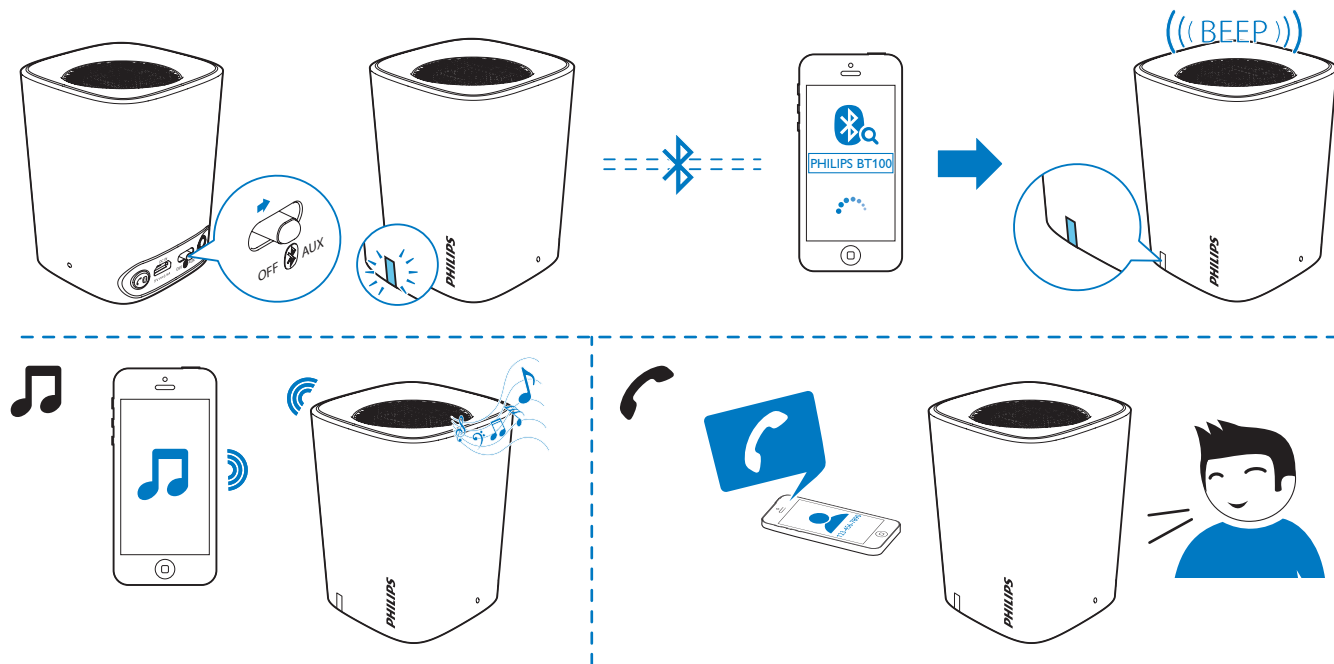
To select the Bluetooth mode/Aux-in mode, slide the **OFF** **AUX** switch to the **AUX** position.

To switch off **BT100**, slide the **OFF** **AUX** switch to the **OFF** position.

ZH-CN

要选择蓝牙模式/Aux-in 模式，请将 **OFF** **AUX** 开关滑至 /**AUX** 位置。

要关闭 **BT100**，请将 **OFF** **AUX** 开关滑至 **OFF** 位置。



EN

**Note:** Make sure that no audio input cable is connected to the **AUX** socket.

#### Bluetooth indicator

Indicator	Bluetooth connection
Flashing blue	Connecting or waiting for connection
Solid blue	Connected

#### Button functions in Bluetooth mode

Status	
Incoming call	Press to answer an incoming call. Press and hold for more than 3 seconds to reject an incoming call.
During a call	Press to end the current call. Press and hold for more than 3 seconds to change call between BT100 and mobile phone.  Press and hold for 8 seconds to clear the pairing information.

ZH-CN

注意：确保音频输入线缆未连接至 **AUX** 插孔。

#### 蓝牙指示灯

指示灯	蓝牙连接
呈蓝色闪烁	正在连接或等待连接
呈蓝色持续亮起	已连接

#### 蓝牙模式下的按钮功能

状态	
来电	按下可接听来电。 按住 3 秒钟以上可拒接来电。
通话时	按下可结束当前通话。 按住 3 秒钟以上可在 BT100 和手机之间转移通话。  按住 8 秒可清除蓝牙配对信息。

Specifications are subject to change without notice.  
2014 © WOOX Innovations Limited. All rights reserved.  
Philips and the Philips' Shield Emblem are registered trademarks of Koninklijke Philips N.V. and are used by WOOX Innovations Limited under license from Koninklijke Philips N.V.

BT100\_93\_SUM\_V2.0



