

# Quick start guide



Step A *Connect*

Step B *Setup*

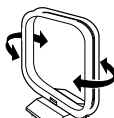
Step C *Enjoy*

## What's in the Box?

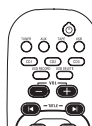
You should find these items upon opening the box.



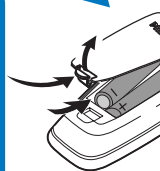
FM antenna



MW antenna



Remote control with two  
AA batteries



Quick Start Guide



User manual

# PHILIPS

## Step A *Connect*

1

Connect the speaker cables.

2

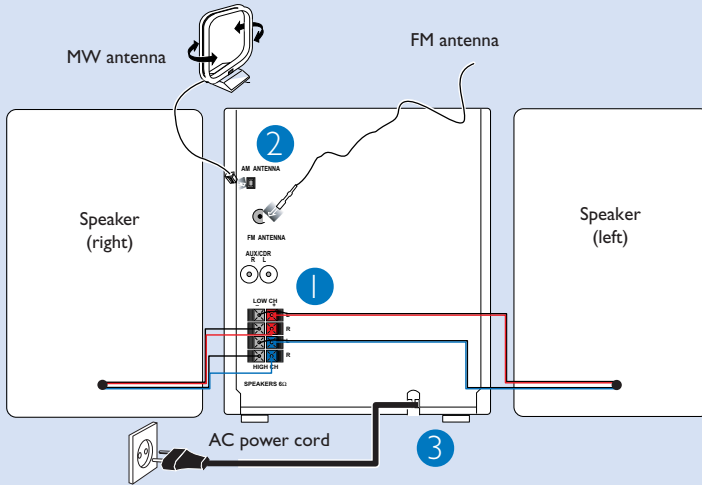
Connect the MW and FM antennas.

3

Connect the power cable of the system.

### Tip


See the User Manual for how to connect other equipment to this system.



## Step B *Setup*

### Setting the clock

#### IMPORTANT!

– To set clock in the Eco Power mode, press and hold **STANDBY-ON/ECO POWER**  on the set for 3 seconds or more to switch to normal standby mode first before proceeding with the procedures below.

1

In standby or view clock mode, press **CLOCK-TIMER** once. In other source mode, press **CLOCK-TIMER** twice.

2

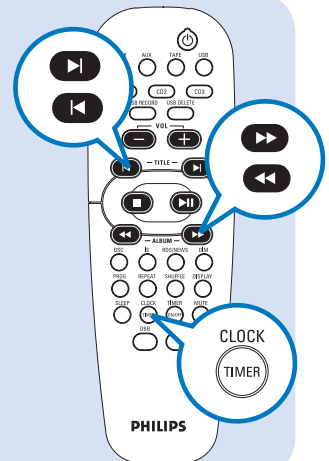
Press **◀** or **▶** repeatedly to set the hour.

3

Press **◀** or **▶** repeatedly to set the minute.

4

Press **CLOCK-TIMER** again to store the setting.



## Playing a disc

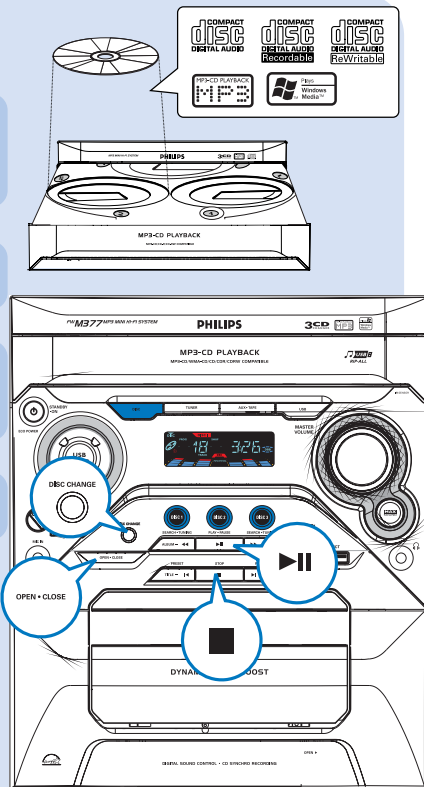
Press **OPEN•CLOSE** to open the disc tray and load up to two discs on the individual disc trays. To load the third disc, press **DISC CHANGE**.

→ Make sure the label side of each loaded disc is facing up.

Press **OPEN•CLOSE** again to close the disc tray.

Use **DSC 1/2/3** (or **CD 1/2/3** on the remote control) to select a disc for playback and then press **▶ ||** to start playback.

To stop playback, press **STOP** .

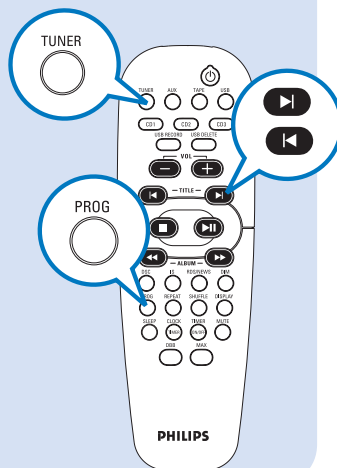


## Programming and tuning to radio stations

Press **TUNER** to select the tuner source.


Press **PROG** for more than two seconds to program all available stations in order of waveband.

Press **◀** or **▶** until the desired preset station is displayed.




## Playing a USB mass storage device

With the Hi-Fi system, you can use USB flash memory (USB 2.0 or USB1.1), USB flash players (USB 2.0 or USB1.1), memory cards (requires an additional card reader to work with this Hi-Fi system).

- 1 Insert the USB device's USB plug into the socket  on the set.
- 2 Press **USB** to select the USB source.
- 3 Play the USB's audio files as you do with the albums/tracks on a CD.

## Ripping function

- 1 Insert a USB mass device with sufficient free space to the **USB DIRECT**  socket on the set.
- 2 Prepare the source to record from.
- 3 Press **USB RECORD** to start ripping.
- 4 At any moment, simply press **STOP**  to stop ripping.

### Tip

*Detailed playback features and additional functions are described in the accompany owner's manual.*



© Royal Philips Electronics N.V. 2007  
All rights reserved.

<http://www.philips.com>

