

PHILIPS

Soundbar 7.1.2

Fidelio B97

快速操作指南



在以下网站上注册产品并获得支持
www.philips.com/support

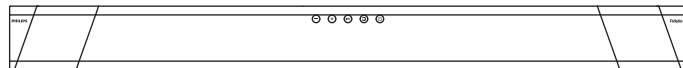


ZH-CN 下载Philips Sound App





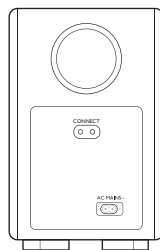
ZH-CN 使用产品前，请阅读所有随附的安全信息



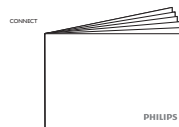
主装置



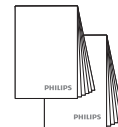
遥控器



无线低音扬声器



快速操作指南



保修卡
安全手册



无线扬声器
侧端盖



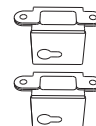
电源线*
2 X



适配器



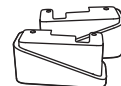
壁挂支架
主装置



壁挂支架
无线扬声器



胶盖
螺钉(墙壁)
螺钉(主装置)

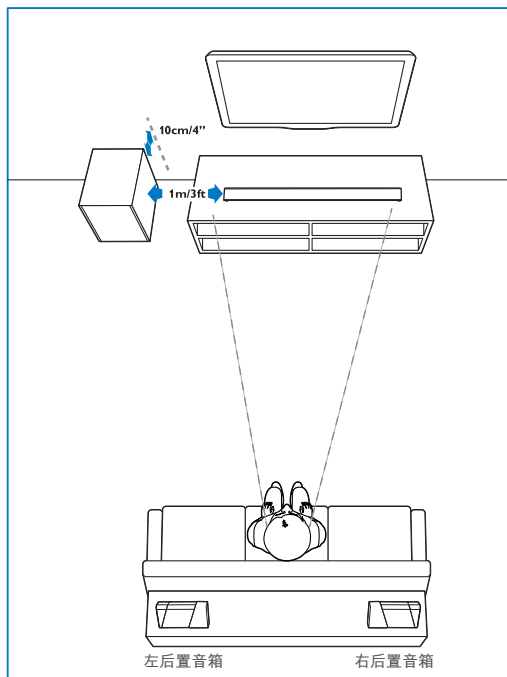


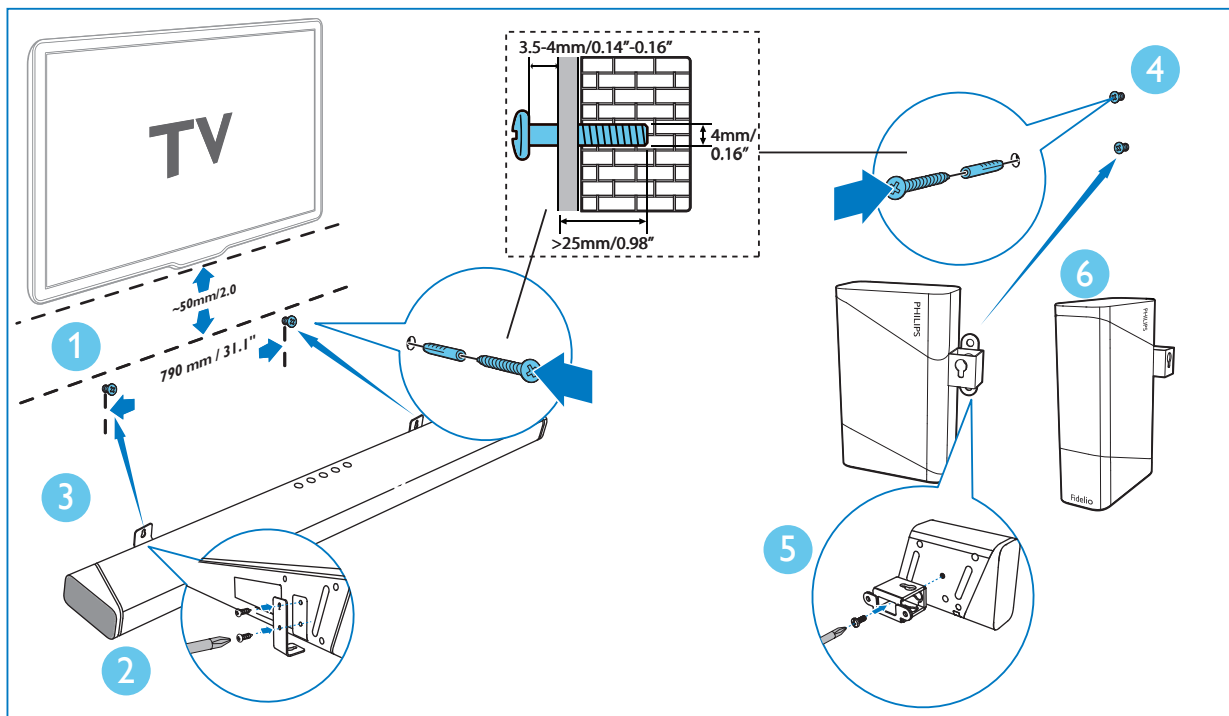
主装置
侧端盖

*电源线数量及插头类型因地区而异。

1

ZH-CN 摆放产品/壁挂安装产品（可选）





建议挂墙高度

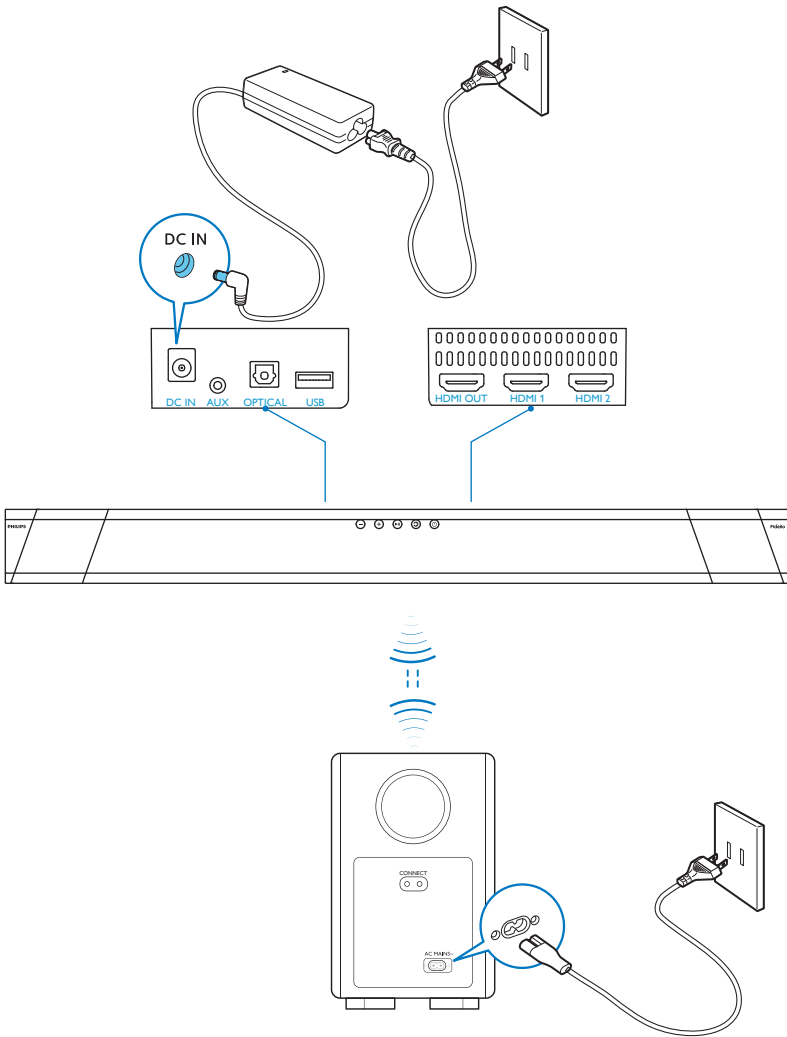
建议您在壁挂主装置之前先安装电视。

预先安装电视后，将主装置安装在距电视底部50毫米的位置。

如果壁挂安装主装置，请在墙上钻两个平行孔（直径3-8毫米，具体取决于墙壁类型）。两孔间距应为790毫米。

2

连接主装置

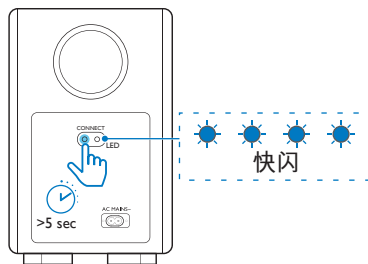




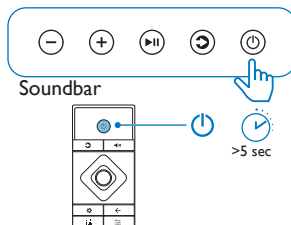
ZH-CN

手动配对连接无线低音扬声器

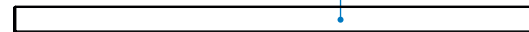
1



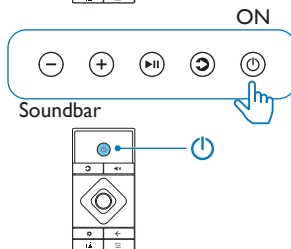
2



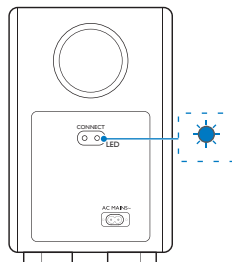
ECO 5



3

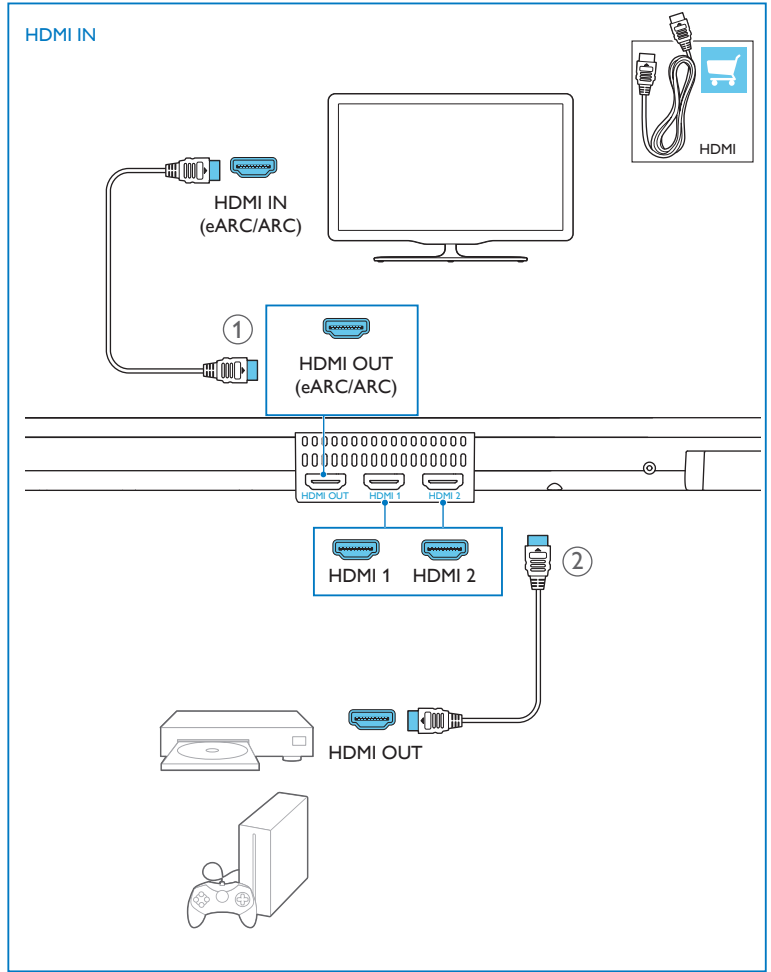


4

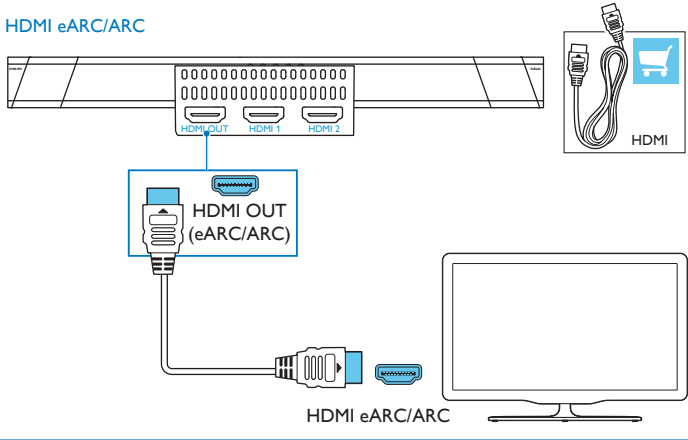


3

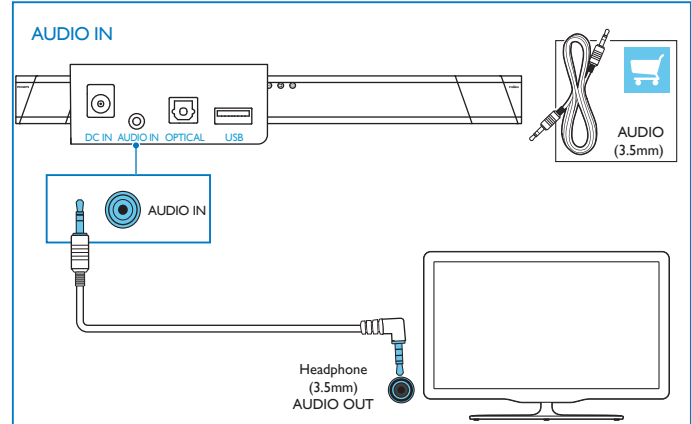
ZH-CN 选择以下一种连接方式聆听电视音频



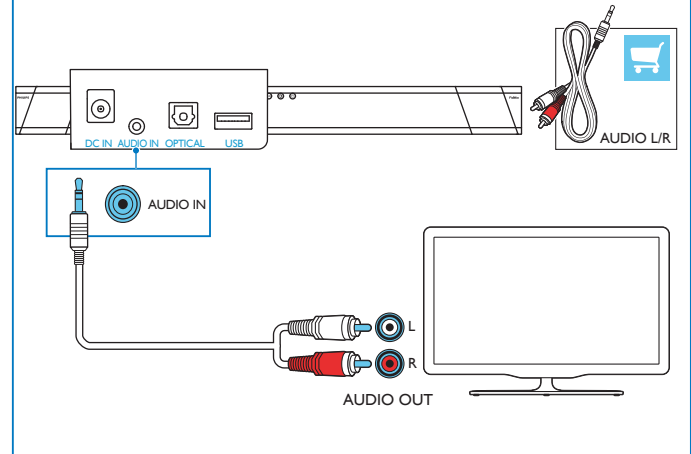
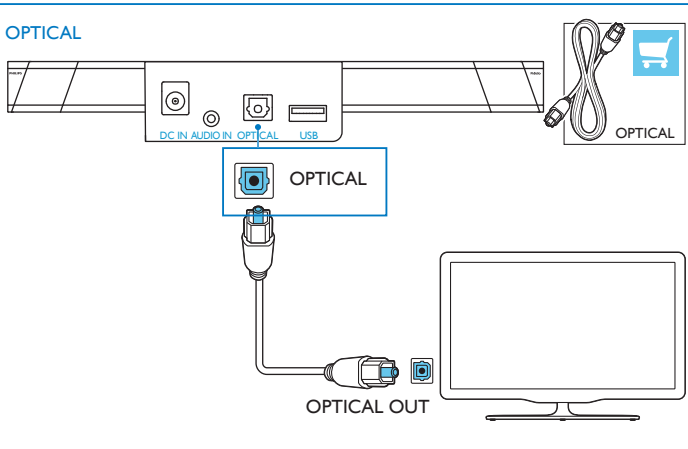
HDMI eARC/ARC



AUDIO IN

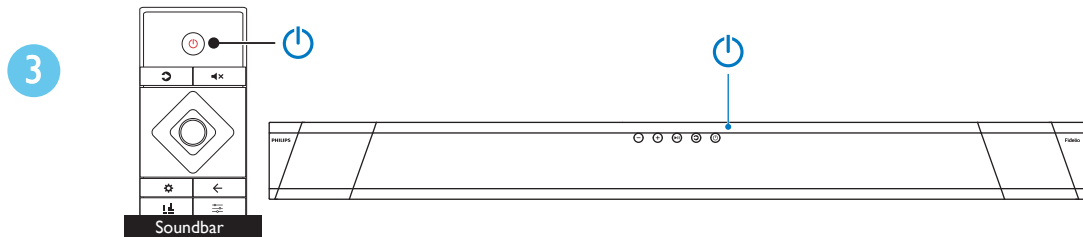
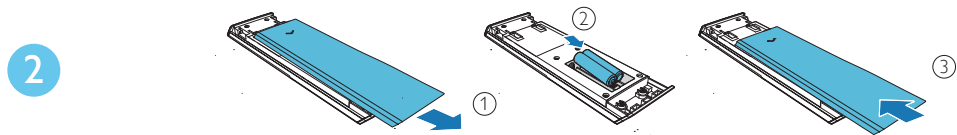
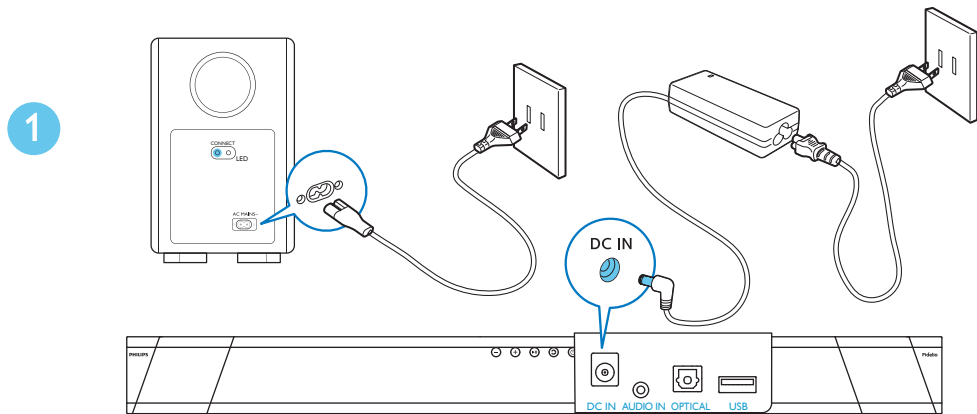


OPTICAL



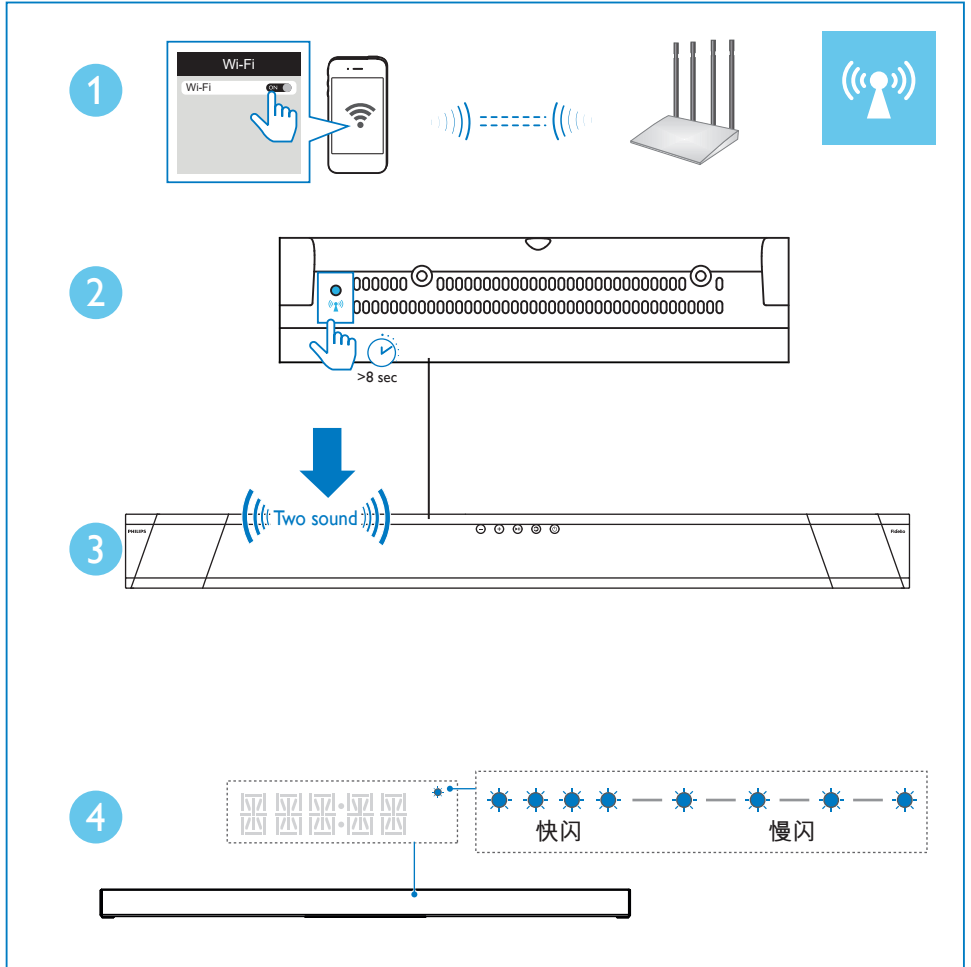
4

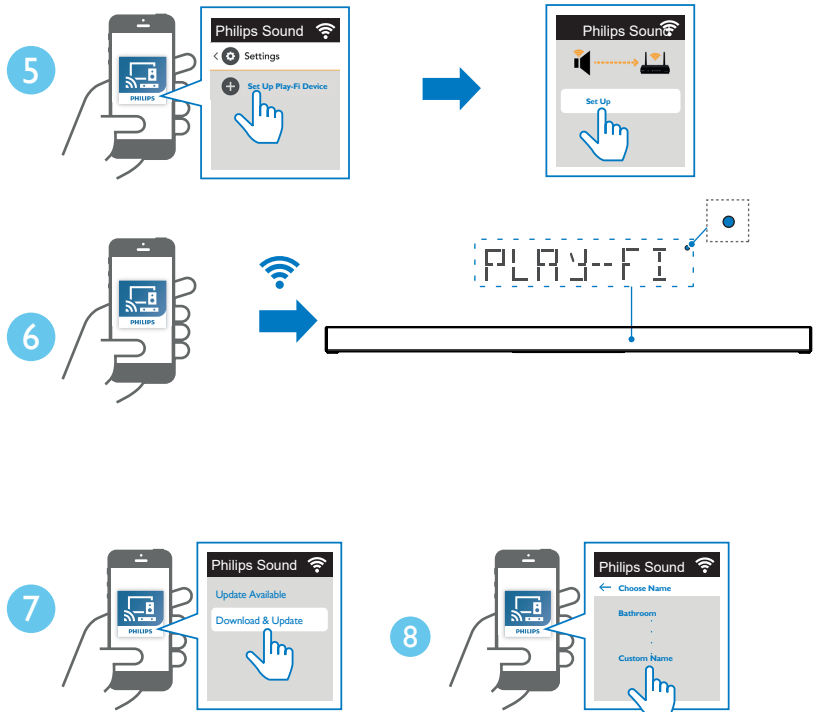
ZH-CN 开启本产品



5

ZH-CN 设置无线网络



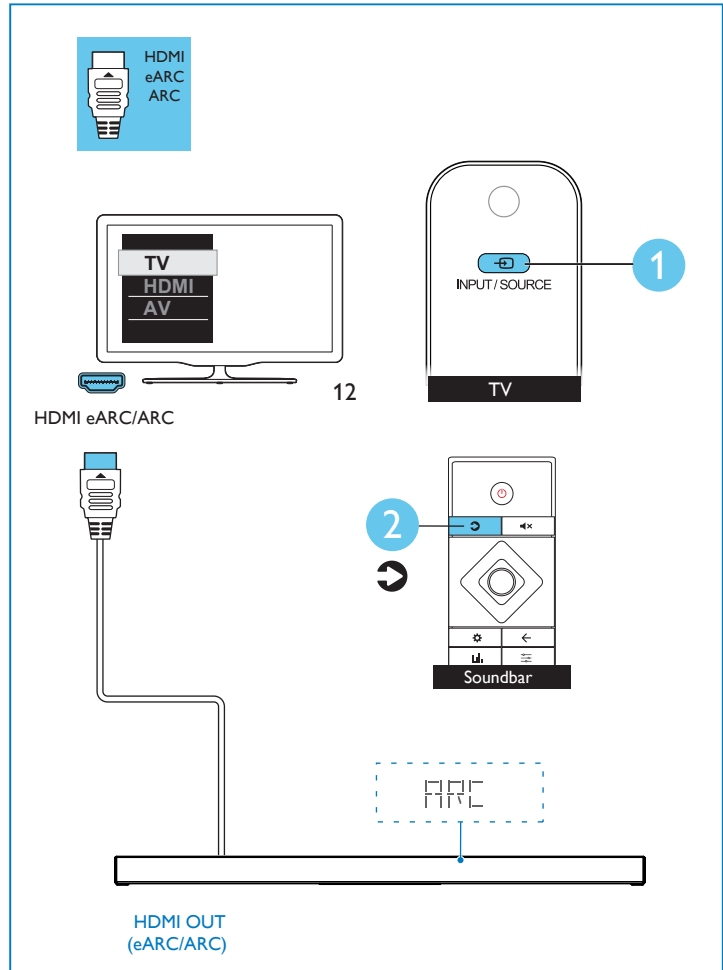


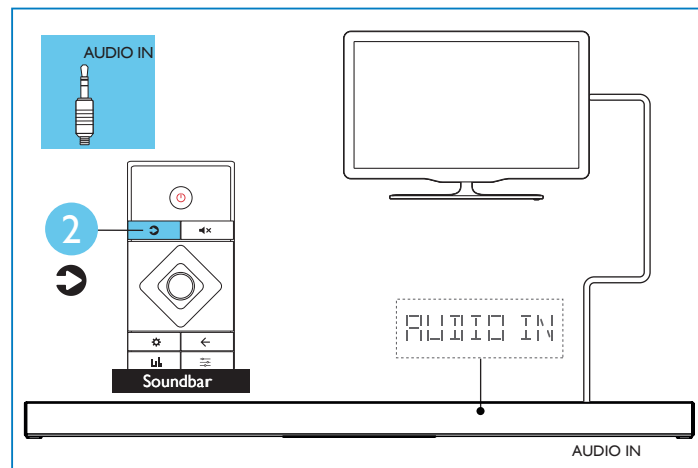
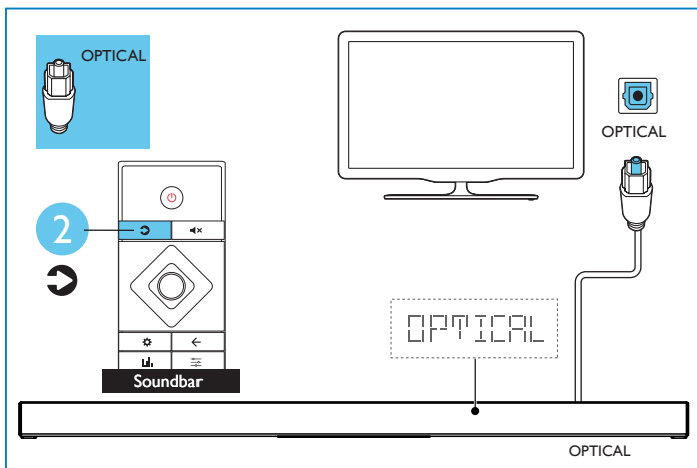
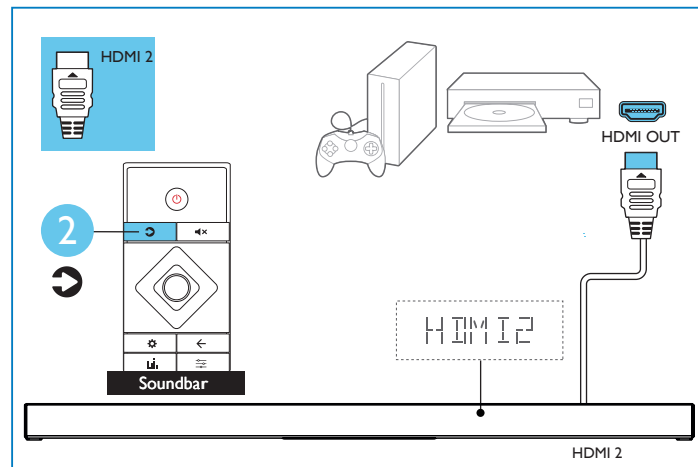
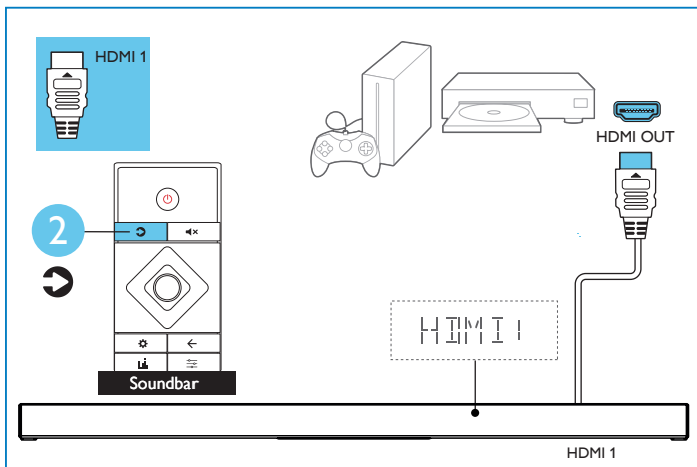
注

- 1 如果首次设置不成功，需退出 Philips Sound App。
- 2 重新启动 App。
- 3 再次设置。

6

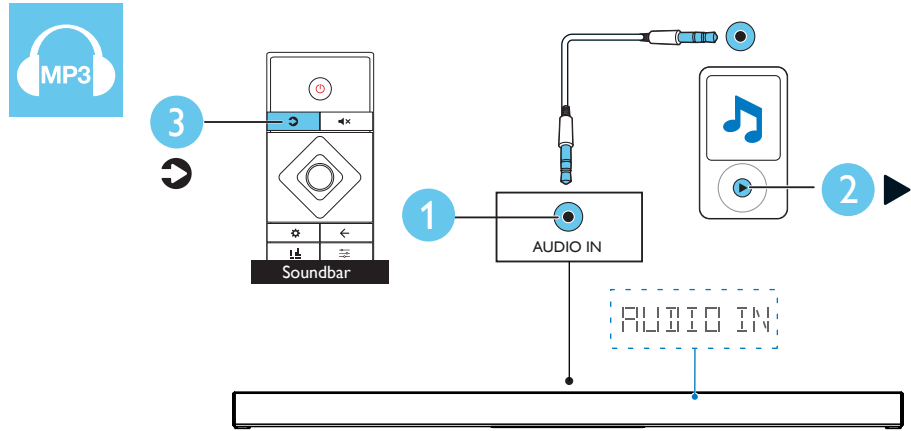
ZH-CN 选择正确的音频输入源





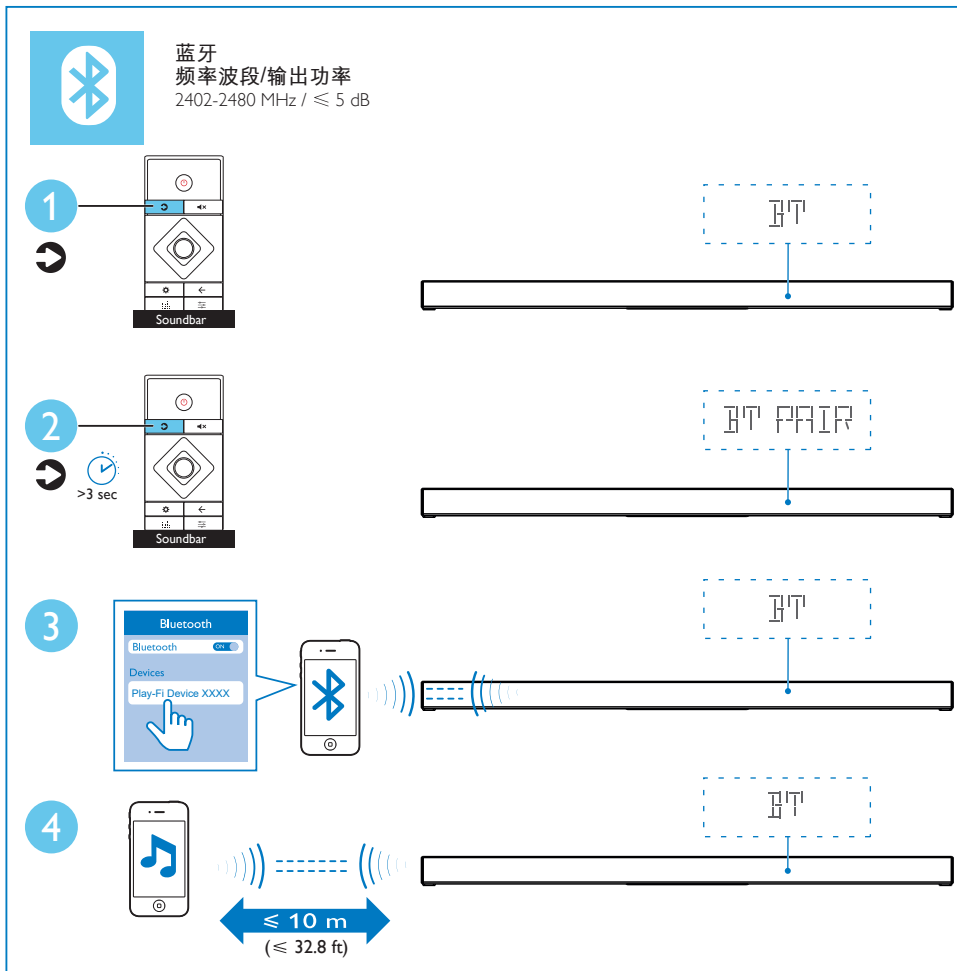
7

ZH-CN 播放其它设备



8

ZH-CN 通过蓝牙播放音频





ZH-CN 访问 www.philips.com/support 更详尽地了解本产品



www.philips.com/support



Specifications are subject to change without notice. Please visit www.Philips.com/support for the latest updates and documents.

Philips and the Philips Shield Emblem are registered trademarks of Koninklijke Philips N.V. and are used under license.

This product has been manufactured by and is sold under the responsibility of MMD Hong Kong Holding Limited or one of its affiliates, and MMD Hong Kong Holding Limited is the warrantor in relation to this product.

B97_93_QSG_V01

