

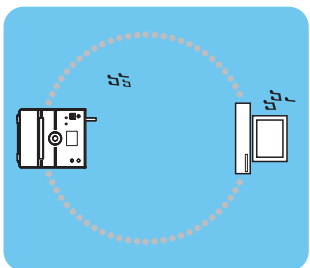
Wireless Music Center

WAC3500  
WAC3500D

# Connect to your PC

Connect Philips Wireless Music Center to your PC to perform the following:

- **Access** music files stored on your PC from the UPnP source of Philips Music Center.
- **Manage** the music content stored on Philips Music Center from your PC
- **Update** Gracenote® music recognition service database on the Center for the latest disc information
- **Upgrade** firmware of Philips Music Center



## Minimum PC requirements:

- Windows 2000 SP4 or above / XP (Home or Professional) / Vista
- Pentium III 500MHz processor or higher
- 256MB RAM
- CD-ROM Drive
- Ethernet Adapter (for wired connection)/ Wireless Network Adapter 802.11 b/g (for wireless connection)
- 500MB free hard disk space

## Index

Set up connection between the Center and your PC

For more information, see **A**



Transfer your PC content to the Center using WADM (Wireless Audio Device Manager)

For more information, see **B<sub>1</sub>** to **B<sub>4</sub>**



Connect the Center to your home network (For advanced users)

For more information, see **C<sub>1</sub>** to **C<sub>2</sub>**



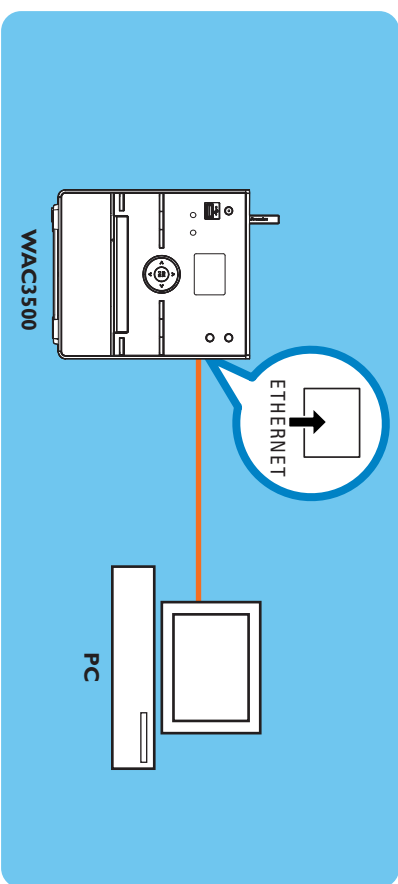
Stream PC content to the Center by UPnP (Universal Plug and Play) (For advanced users)

For more information, see **D<sub>1</sub>** to **D<sub>2</sub>**

## A

### Set up a wired connection

Connect Center to your PC directly with the supplied (orange) Ethernet cable



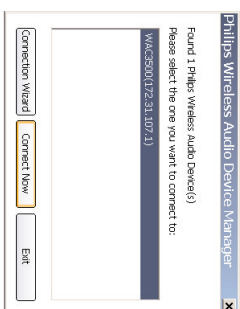
Go to section **B<sub>1</sub>** after connection is established

**Tip:**  
• Make sure that the Ethernet port on your PC is enabled to establish WADM connection.

## B<sub>1</sub>

### Install and launch WADM

- 1 Insert the PC Suite CD into your PC
- 2 Select desired language and accept license terms
- 3 Select "WADM" and click **Next** to start installation
- 4 To launch WADM, double click WADM icon on the PC desktop.
- 5 Select the desired Center, and then click **Connect now**



If the desired Center is not discovered, select **Connection Wizard** > **Express mode** > **Next** to establish new connection

#### Note:

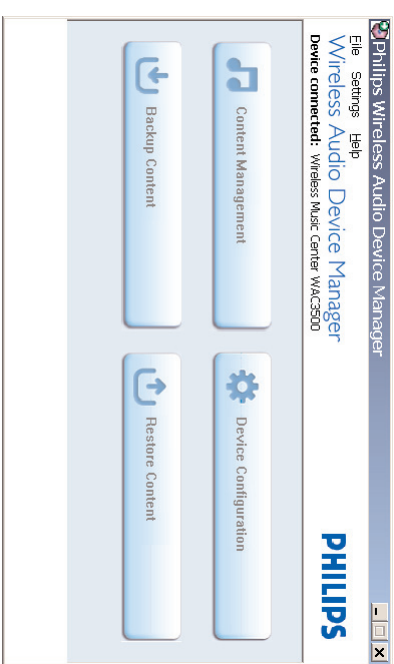
If you have more than one network adapter in your PC, please select the Ethernet adapter that you have connected your Orange cable to.

#### Tips:

- Log onto your PC with administrator's rights enabled.
- If the IP configuration of the Center is not in the default range (Subnet mask: 255.255.0.0; IP address: 172.31.x.x), select **Connection Wizard** > **Custom Mode**. Enter the current IP configuration of the Center as prompted. Press **MENU** and select **Information** > **Wired** to check IP configuration.
- For Windows XP SP2 users, the Windows Firewall must be turned off temporarily by selecting **Start** > **Control Panel** > **Security Center** > **Windows Firewall** > **Off** in order to use the WADM (Visit [www.microsoft.com](http://www.microsoft.com) for more details).
- When WADM is running, Internet access of your PC may be disabled. Close WADM to restore access.
- If the operating system of your PC is Windows Vista, right click on WADM icon, select **Properties** > **Compatibility**, and make sure the check-box under "Compatibility mode" and "Privilege level" is marked, then click **OK**. Otherwise you may not be able to launch WADM.

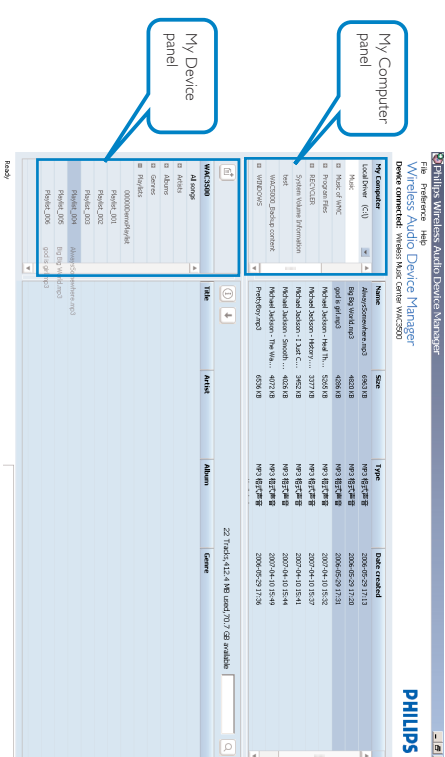
## B<sub>2</sub>

### Using WADM



#### Transfer music files from your PC to the Center

- 1 Click **Content management**
  - A new window will be shown.
- 2 On **My Computer** panel, click to highlight a desired file/folder
- 3 Drag selection to **My Device** panel
- 4 While transferring, you can add more file/folder(s) to the transfer queue



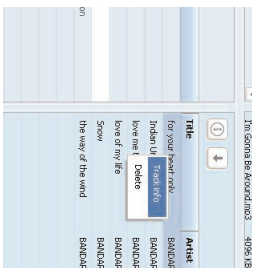
**Tip:**  
• It is recommended to transfer less than 4G or 1000 songs at each attempt.

## B<sub>3</sub>

### Using WADM

#### To edit track information

- 1 On the device window, click to highlight the desired track
- 2 Right click on your mouse. Click **Track Info**

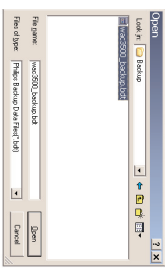


#### Tips:

- To select more than one file, press and hold <Ctrl> on your PC keyboard, and click the desired files.
- To playback tracks double click on the track to start playing.
- Click "Title" or "Artist" to sort the music files by track name or by Artist
- In case the edited ID3 tags are not shown on WADM, go to **File** > **Refresh Content** to refresh the WADM. Otherwise, restart WADM.
- Always press and hold **STANDBY-ON** to switch the Center to ECO POWER (power-saving mode) before removing its power plug to avoid losing tracks.

#### Backup the music library of the Center to your PC

- 1 Click **Backup content**
- 2 Follow the screen instructions to backup the music library of the Center to your PC. Backup files are named with current date



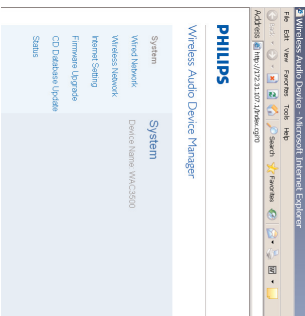
#### Tips:

- Make sure that you have adequate space to store the backup files.
- Do not delete the backup file using Windows Explorer. If the backup file is accidentally deleted, please search for the file named **YOURMAC.inx** using Windows Explorer search tool and then delete it. You can only perform backup after that.

# B<sub>4</sub> Using WADM

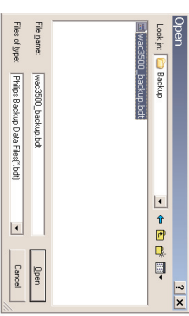
## About Device Configuration

In the sub-menu of Device configuration, you can view System information, manage the Network settings, upgrade Firmware, update CD Database and view connection of the device with the external network. For details, see the **User Manual**.



## Restore backup files on your PC to the Center

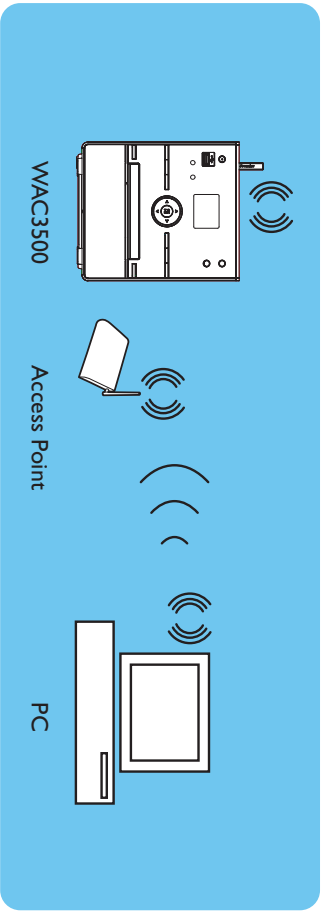
- 1 Click **Restore content**
- 2 Click to highlight the file to be restored, and then click **Open**



### Tips:

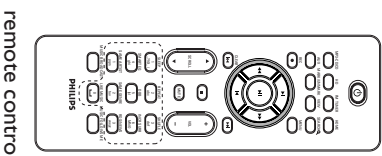
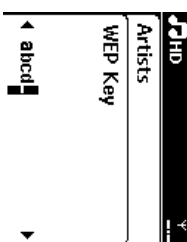
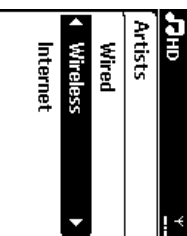
- After changing network settings with WADM, press and hold **STANDBY-ON** to switch the Center to ECO Power (power-saving mode) to refresh IP update.
- If some of the WADM functions cannot be used, they might be blocked by your anti-virus software. It is recommended that you turn off your anti-virus software temporarily.

# C<sub>1</sub> Connecting to home wireless network



## To connect the Center to the wireless network:

- Press **MENU**
- Select **Settings > Network > Wireless > (Select desired network - SSID) > (Use the remote control to input the encryption key) > Press OK > Select Automatic > Apply Settings > Yes**

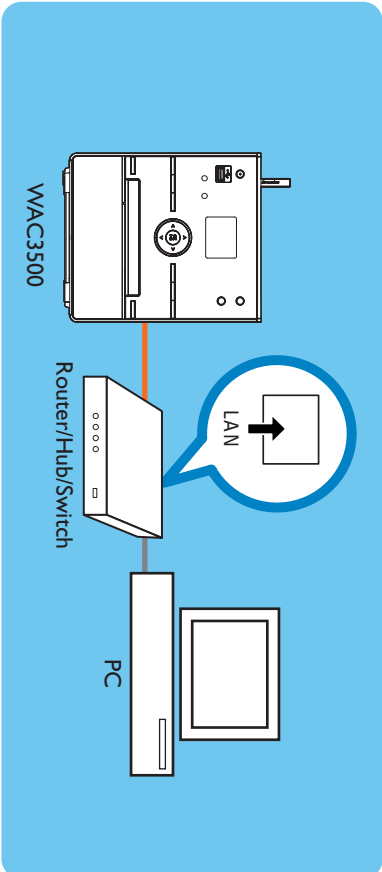


### Tips:

- Check that the wireless network adaptor of your PC is enabled.
- Position the Center closer to your wireless Access Point.
- Make sure that DHCP is enabled on your wireless Access Point. If it is not available, choose Static and key in IP configuration
- If you want to return to the original Center connection at factory default mode, please reset the Center to its default settings (see section 14 of the User Manual)
- In case you experience trouble setting up your WAC3500 with your home wireless network after you are done with the steps described above, please refer to section 18 on Troubleshooting of the User Manual.

# C<sub>2</sub> Connecting to home wired network


Connect the Center directly to the Router/Hub/Switch with the supplied (orange) Ethernet cable

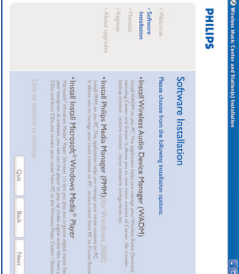
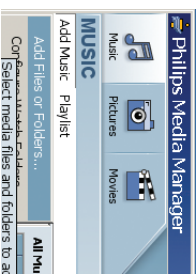


### Tip:

- If your home network is connected to Internet, you should be able to use Gracenote online queries after successfully connecting WAC3500 to your home wireless network. For details, please refer to section 12 of the User Manual.

# D<sub>1</sub> Using UPnP (for Windows 2000)

- 1 Insert the PC suite CD into your PC.
- 2 Click "Install Philips Media Manager" to start the installation of PMM.
- 3 Follow the on-screen instructions for the installation.
- 4 To launch PMM, double click the icon  on the PC desktop.
- 5 The first time you launch **PMM**, click **Add Music > Add Files or Folders** to specify music folders on your PC
- 6 On WAC3500, press **HOME** and use the navigation controls **▲** or **▼** and **▶** to enter UPnP mode. If you have successfully connected WAC3500 to the home network where your PC is also connected to, you should be able to see the Music Server on the screen of WAC3500

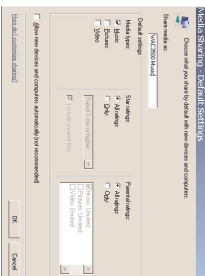
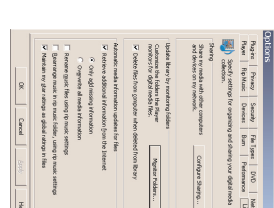


### Tips:

- UPnP server may not necessarily be a PC but any content serving device.
- If the PMM cannot be detected after 5 minutes, close the PMM application and then restart it.
- It is recommended that you do not set the PMM as an auto-startup application.

# D<sub>2</sub> Using UPnP (for Windows XP/Vista)

- 1 Insert the PC suite CD into your PC.
- 2 Click "Install Windows Media Player 11" to start the installation of Windows Media Player.
- 3 On your PC, click **Start > Programs > Windows Media Player**
- 4 On the Windows Media Player interface, select **Tools > Options**
- 5 On the displayed interface, select the **Library** tab
- 6 Click **Configure Sharing**
- 7 When your center is connected to your home network, it appears in the window. Click the WAC3500 icon, and then click **Allow**.
- 8 To change the default sharing options, click **Settings**
- 9 Edit your UPnP server name and select the check boxes as below, and then click **OK**
- 10 On the Library tab, click **Monitor Folders** to manage your share folders
- 11 On WAC3500, press **HOME** and use the navigation controls **▲** or **▼** and **▶** to enter UPnP mode. If you have successfully connected WAC3500 to the home network where your PC is also connected to, you should be able to see the Music Server on the screen of WAC3500



- To download Microsoft Windows Media Player 11, use the following URL: <http://www.microsoft.com/windows/windowsmedia/download>.

© Royal Philips Electronics N.V. 2007  
All rights reserved.  
3141 075 22.41  
[www.philips.com](http://www.philips.com)



Fig

**Need help?**  
[www.philips.com/support](http://www.philips.com/support)  
or  
call our helpdesk



Gracenote is a registered trademark of Gracenote. The Gracenote logo and logo-type, and the "Powered by Gracenote" logo are trademarks of Gracenote.  
Microsoft, Windows, Windows 2000, Windows XP, Windows Vista and Windows Media Player are either registered trademarks or trademarks of Microsoft Corporation.

Be responsible  
Respect copyrights