

Always there to help you

Register your product and get support at
www.philips.com/welcome

DC390

Question?
Contact
Philips



Canada

English:

This digital apparatus does not exceed the Class B limits for radio noise emissions from digital apparatus as set out in the Radio Interference Regulations of the Canadian Department of Communications. This Class B digital apparatus complies with Canadian ICES-003.

Français:

Cet appareil numérique n'émet pas de bruits radioélectriques dépassant les limites applicables aux appareils numériques de Classe B prescrites dans le Règlement sur le Brouillage Radioélectrique édicté par le Ministère des Communications du Canada. Cet appareil numérique de la classe B est conforme à la norme NMB-003 du Canada.

The set complies with the FCC-Rules, Part 15 and with 21 CFR 1040.10. Operation is subject to the following two conditions:

1. This device may not cause harmful interference, and
2. This device must accept any interference received, including interference that may cause undesired operation.

L'appareil est conforme à la réglementation FCC, section 15, et à la norme 21 CFR 1040.10. Son utilisation est soumise à deux conditions :

1. L'appareil ne doit pas provoquer d'interférences nuisibles, et
2. L'appareil doit supporter les interférences reçues, y compris les interférences empêchant son fonctionnement correct.

Contents

1 Important	6
Safety	6
Notice	8
2 Your Docking Entertainment System	9
Introduction	9
What's in the box	9
Overview of the main unit	10
Overview of the remote control	11
3 Get started	12
Install batteries	12
Prepare the remote control	13
Connect power	13
Set time and date	13
Turn on	14
4 Play	14
Play from iPod/iPhone/iPad	14
Install the rubber pad	15
Play from an external device	15
5 Listen to radio	16
Tune to a radio station	16
Program radio stations automatically	16
Program radio stations manually	16
Select a preset radio station	16
6 Other features	17
Set the alarm timer	17
7 Adjust sound	18
Adjust volume level	18
Mute sound	18
Select a preset sound effect	18
Enhance bass	18

8 Product information	19
Specifications	19
9 Troubleshooting	20

Register online at www.philips.com/welcome today to
get the very most from your purchase.

Registering your model with PHILIPS makes you eligible for all of the valuable benefits listed below, so don't miss out.
Register online at www.philips.com/welcome to ensure:

*Product Safety Notification

By registering your product, you'll receive notification - directly from the manufacturer.

*Additional Benefits

Registering your product guarantees that you'll receive all of the privileges to which you're entitled, including special money-saving offers.

PHILIPS

*Congratulations on your purchase,
and welcome to the "family!"*

Dear PHILIPS product owner:

Thank you for your confidence in PHILIPS. You've selected one of the best-built, best-backed products available today. We'll do everything in our power to keep you happy with your purchase for many years to come.

As a member of the PHILIPS "family," you're entitled to protection by one of the most comprehensive warranties in the industry. What's more, your purchase guarantees you'll receive all the information and special offers for which you qualify, plus easy access to accessories from our convenient home shopping network.

Most importantly, you can count on our uncompromising commitment to your total satisfaction.

All of this is our way of saying welcome - and thanks for investing in a PHILIPS product.

P.S. To get the most from your PHILIPS purchase, be sure to register online at:
www.philips.com/welcome

Know these safety symbols



This "bolt of lightning" indicates uninsulated material within your unit may cause an electrical shock. For the safety of everyone in your household, please do not remove product covering.

The "exclamation point" calls attention to features for which you should read the enclosed literature closely to prevent operating and maintenance problems.

WARNING: To reduce the risk of fire or electric shock, this apparatus should not be exposed to rain or moisture and objects filled with liquids, such as vases, should not be placed on this apparatus.

CAUTION: To prevent electric shock, match wide blade of plug to wide slot, fully insert.

ATTENTION: Pour éviter les choc électriques, introduire la lame la plus large de la fiche dans la borne correspondante de la prise et pousser jusqu'au fond.

For Customer Use

Enter below the Serial No. which is located on the rear of the cabinet. Retain this information for future reference.

Model No. _____

Serial No. _____

PHILIPS

Visit our World Wide Web Site at <http://www.philips.com/welcome>

PHILIPS LIMITED WARRANTY ONE (1) YEAR

WARRANTY COVERAGE:

PHILIPS warranty obligation is limited to the terms set forth below.

WHO IS COVERED:

PHILIPS warrants the product to the original purchaser or the person receiving the product as a gift against defects in materials and workmanship as based on the date of original purchase ("Warranty Period") from an Authorized Dealer. The original sales receipt showing the product name and the purchase date from an authorized retailer is considered such proof.

WHAT IS COVERED:

The Philips warranty covers new products if a defect in material or workmanship occurs and a valid claim is received by Philips within the Warranty Period. At its option, Philips will either (1) repair the product at no charge, using new or refurbished replacement parts, or (2) exchange the product with a product that is new or which has been manufactured from new, or serviceable used parts and is at least functionally equivalent or most comparable to the original product in Philips current inventory, or (3) refund the original purchase price of the product. Philips warrants replacement products or parts provided under this warranty against defects in materials and workmanship from the date of the replacement or repair for ninety (90) days or for the remaining portion of the original product's warranty, whichever provides longer coverage for you. When a product or part is exchanged, any replacement item becomes your property and the replaced item becomes Philips' property. When a refund is given, your product becomes Philips' property.

Note: Any product sold and identified as refurbished or renewed carries a ninety (90) day limited warranty.

Replacement product can only be sent if all warranty requirements are met. Failure to follow all requirements can result in delay.

WHAT IS NOT COVERED - EXCLUSIONS AND LIMITATIONS:

This Limited Warranty applies only to the new products manufactured by or for Philips that can be identified by the trademark, trade name, or logo affixed to it. This Limited Warranty does not apply to any non-Philips hardware product or any software, even if packaged or sold with the product. Non-Philips manufacturers, suppliers, or publishers may provide a separate warranty for their own products packaged with the bundled product.

Philips is not liable for any damage to or loss of any programs, data, or other information stored on any media contained within the product, or any non-Philips product or part not covered by this warranty. Recovery or reinstallation of programs, data or other information is not covered under this Limited Warranty.

This warranty does not apply (a) to damage caused by accident, abuse, misuse, neglect, misapplication, or non-Philips product, (b) to damage caused by service performed by anyone other than Philips or Philips Authorized Service Location, (c) to a product or a part that has been modified without the written permission of

Philips, or (d) if any Philips serial number has been removed or defaced, or (e) product, accessories or consumables sold "AS IS" without warranty of any kind by including refurbished Philips product sold "AS IS" by some retailers.

This Limited Warranty does not cover:

- Shipping charges to return defective product to Philips.
- Labor charges for installation or setup of the product, adjustment of customer controls on the product, and installation or repair of antenna/signal source systems outside of the product.
- Product repair and/or part replacement because of improper installation or maintenance, connections to improper voltage supply, power line surge, lightning damage, retained images or screen markings resulting from viewing fixed stationary content for extended periods, product cosmetic appearance items due to normal wear and tear, unauthorized repair or other cause not within the control of Philips.
- Damage or claims for products not being available for use, or for lost data or lost software.
- Damage from mishandled shipments or transit accidents when returning product to Philips.
- A product that requires modification or adaptation to enable it to operate in any country other than the country for which it was designed, manufactured, approved and/or authorized, or repair of products damaged by these modifications.
- A product used for commercial or institutional purposes (including but not limited to rental purposes).
- Product lost in shipment and no signature verification receipt can be provided.
- Failure to operate per Owner's Manual.

TO OBTAIN ASSISTANCE IN THE U.S.A., CANADA, PUERTO RICO, OR U.S. VIRGIN ISLANDS...

Contact Philips Customer Care Center at:
1-866-309-0845

REPAIR OR REPLACEMENT AS PROVIDED UNDER THIS WARRANTY IS THE EXCLUSIVE REMEDY FOR THE CONSUMER. PHILIPS SHALL NOT BE LIABLE FOR ANY INCIDENTAL OR CONSEQUENTIAL DAMAGES FOR BREACH OF ANY EXPRESS OR IMPLIED WARRANTY ON THIS PRODUCT. EXCEPT TO THE EXTENT PROHIBITED BY APPLICABLE LAW, ANY IMPLIED WARRANTY OF MERCHANTABILITY OR FITNESS FOR A PARTICULAR PURPOSE ON THIS PRODUCT IS LIMITED IN DURATION TO THE DURATION OF THIS WARRANTY.

Some states do not allow the exclusions or limitation of incidental or consequential damages, or allow limitations on how long an implied warranty lasts, so the above limitations or exclusions may not apply to you.

This warranty gives you specific legal rights. You may have other rights which vary from state/province to state/province.

P&F USA, Inc. PO Box 2248, Alpharetta, GA 30023-2248

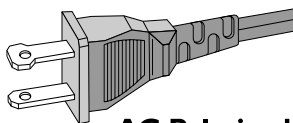
3140 035 51091

1 Important

Safety

Important Safety Instructions

- ① Read these instructions.
- ② Keep these instructions.
- ③ Heed all warnings.
- ④ Follow all instructions.
- ⑤ Do not use this apparatus near water.
- ⑥ Clean only with dry cloth.
- ⑦ Do not block any ventilation openings. Install in accordance with the manufacturer's instructions.
- ⑧ Do not install near any heat sources such as radiators, heat registers, stoves, or other apparatus (including amplifiers) that produce heat.
- ⑨ Do not defeat the safety purpose of the polarized or grounding-type plug. A polarized plug has two blades with one wider than the other. A grounding type plug has two blades and a third grounding prong. The wide blade or the third prong are provided for your safety. If the provided plug does not fit into your outlet, consult an electrician for replacement of the obsolete outlet.



AC Polarized Plug

- ⑩ Protect the power cord from being walked on or pinched, particularly at plugs, convenience receptacles, and the point where they exit from the apparatus.

- ⑪ Only use attachments/accessories specified by the manufacturer.
- ⑫ Use only with the cart, stand, tripod, bracket, or table specified by the manufacturer or sold with the apparatus. When a cart is used, use caution when moving the cart/apparatus combination to avoid injury from tip-over.



- ⑬ Unplug this apparatus during lightning storms or when unused for long periods of time.
- ⑭ Refer all servicing to qualified service personnel. Servicing is required when the apparatus has been damaged in any way, such as power-supply cord or plug is damaged, liquid has been spilled or objects have fallen into the apparatus, the apparatus has been exposed to rain or moisture, does not operate normally, or has been dropped.
- ⑮ Battery usage **CAUTION** – To prevent battery leakage which may result in bodily injury, property damage, or damage to the unit:
 - Install all batteries correctly, + and - as marked on the unit.
 - Do not mix batteries (old and new or carbon and alkaline, etc.).
 - Remove batteries when the unit is not used for a long time.
- ⑯ Apparatus shall not be exposed to dripping or splashing.
- ⑰ Do not place any sources of danger on the apparatus (e.g. liquid filled objects, lighted candles).

- ⑮ This product may contain lead and mercury. Disposal of these materials may be regulated due to environmental considerations. For disposal or recycling information, please contact your local authorities or the Electronic Industries Alliance: www.eiae.org.
- ⑯ Where the MAINS plug or an appliance coupler is used as the disconnect device, the disconnect device shall remain readily operable.

Know these safety symbols



This 'bolt of lightning' indicates uninsulated material within your unit may cause an electrical shock. For the safety of everyone in your household, please do not remove product covering.

The 'exclamation mark' calls attention to features for which you should read the enclosed literature closely to prevent operating and maintenance problems. **WARNING:** To reduce the risk of fire or electric shock, this apparatus should not be exposed to rain or moisture and objects filled with liquids, such as vases, should not be placed on this apparatus.

CAUTION: To prevent electric shock, fully insert the plug. (For regions with polarized plugs: To prevent electric shock, match wide blade to wide slot.)

Hearing safety

Listen at a moderate volume.

- Using headphones at a high volume can impair your hearing. This product can produce sounds in decibel ranges that may cause hearing loss for a normal person, even for exposure less than a minute. The higher decibel ranges are offered for those that may have already experienced some hearing loss.
- Sound can be deceiving. Over time your hearing 'comfort level' adapts to higher volumes of sound. So after prolonged listening, what sounds 'normal' can actually be loud and harmful to your hearing. To guard against this, set your volume to a safe level before your hearing adapts and leave it there.

To establish a safe volume level:

- Set your volume control at a low setting.
- Slowly increase the sound until you can hear it comfortably and clearly, without distortion.

Listen for reasonable periods of time:

- Prolonged exposure to sound, even at normally 'safe' levels, can also cause hearing loss.
- Be sure to use your equipment reasonably and take appropriate breaks.

Be sure to observe the following guidelines when using your headphones.

- Listen at reasonable volumes for reasonable periods of time.
- Be careful not to adjust the volume as your hearing adapts.
- Do not turn up the volume so high that you can't hear what's around you.
- You should use caution or temporarily discontinue use in potentially hazardous situations. Do not use headphones while operating a motorized vehicle, cycling, skateboarding, etc.; it may create a traffic hazard and is illegal in many areas.



Warning

- Never remove the casing of this apparatus.
- Never lubricate any part of this apparatus.
- Never place this apparatus on other electrical equipment.
- Keep this apparatus away from direct sunlight, naked flames or heat.
- Ensure that you always have easy access to the power cord, plug or adaptor to disconnect the apparatus from the power.

Notice

Any changes or modifications made to this device that are not expressly approved by Philips Consumer Lifestyle may void the user's authority to operate the equipment.

Notice for the USA

This equipment has been tested and found to comply with the limits for a Class B digital device, pursuant to part 15 of the FCC Rules. These limits are designed to provide reasonable protection against harmful interference in a residential installation. This equipment generates, uses, and can radiate radio frequency energy and, if not installed and used in accordance with the instruction manual, may cause harmful interference to radio communications.

However, there is no guarantee that interference will not occur in a particular installation. If this equipment does cause harmful interference to radio or television reception, which can be determined by turning the equipment off and on, the user is encouraged to try to correct the interference by one or more of the following measures:

- Relocate the receiving antenna.
- Increase the separation between equipment and receiver.
- Connect the equipment into an outlet on a circuit different from that to which the receiver is connected.
- Consult the dealer or an experienced radio/TV technician for help.

This equipment complies with FCC's and IC's RF radiation exposure limits set forth for an uncontrolled environment. The antenna(s) used for this transmitter must be installed and operated to provide a separation distance of at least 20 cm from all persons and must not be collocated or operating in conjunction with any other antenna or transmitter. Installers must ensure that 20cm separation distance will be maintained between the device (excluding its handset) and users.

Disposal of your old product and batteries

Your product is designed and manufactured with high quality materials and components, which can be recycled and reused. Never dispose of your product with other household waste. Please inform yourself about the local rules on the separate collection of electrical and electronic products and batteries. The correct disposal of these products helps prevent potentially negative consequences on the environment and human health.

Your product contains batteries, which cannot be disposed of with normal household waste. Please inform yourself about the local rules on separate collection of batteries. The correct disposal of batteries helps prevent potentially negative consequences on the environment and human health.

Please visit www.recycle.philips.com for additional information on a recycling center in your area.



Caution

- Removal of the built-in battery invalidates the warranty and may destroy the product.

Environmental information

All unnecessary packaging has been omitted. We have tried to make the packaging easy to separate into three materials: cardboard (box), polystyrene foam (buffer) and polyethylene (bags, protective foam sheet.)

Your system consists of materials which can be recycled and reused if disassembled by a specialized company. Please observe the local regulations regarding the disposal of packaging materials, exhausted batteries and old equipment.



"Made for iPod," "Made for iPhone," and "Made for iPad" mean that an electronic accessory has been designed to connect specifically to iPod, iPhone, or iPad, respectively, and has been certified by the developer to meet Apple performance standards. Apple is not responsible for the operation of this device or its compliance with safety and regulatory standards. Please note that the use of this accessory with iPod, iPhone, or iPad may affect wireless performance. iPod and iPhone are trademarks of Apple Inc., registered in the U.S. and other countries. iPad is a trademark of Apple Inc.

Class II equipment symbol:



CLASS II apparatus with double insulation, and no protective earth provided.

2 Your Docking Entertainment System

Congratulations on your purchase, and welcome to Philips! To fully benefit from the support that Philips offers, register your product at www.philips.com/welcome.

Introduction

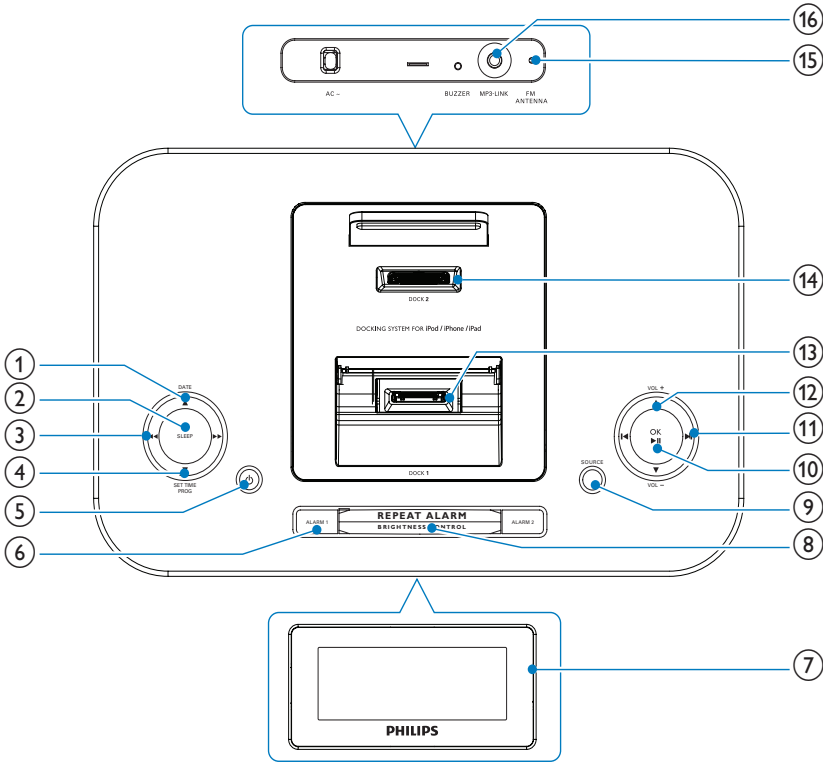
With this unit, you can enjoy audio from iPod, iPhone, iPad, radio, or other audio devices. The radio, iPod, iPhone, or iPad can be set as the alarm timer. You can set two alarm timers to go off at different time.

What's in the box

Check and identify the contents of your package:

- Main unit
- Remote control
- 1 x MP3 link cable
- Quick start guide
- User manual
- Rubber pad

Overview of the main unit



① ▲/DATE

- View the clock time and date.

② SLEEP

- Set the sleep timer.

③ ◀▶/SEARCH

- Search within an audio file.
- Tune to a radio station.

④ ▼/SET TIME/PROG

- Set the clock and date.
- Program radio stations.

⑤ ⏻

- Turn on the unit or switch to standby mode.
- Deactivate the sleep timer.
- Stop alarm.

⑥ ALARM 1/ALARM 2

- Set the alarm timer.
- Turn off the alarm tone.
- View alarm settings.

⑦ Display panel

- Show the status.

⑧ REPEAT ALARM/BRIGHTNESS CONTROL

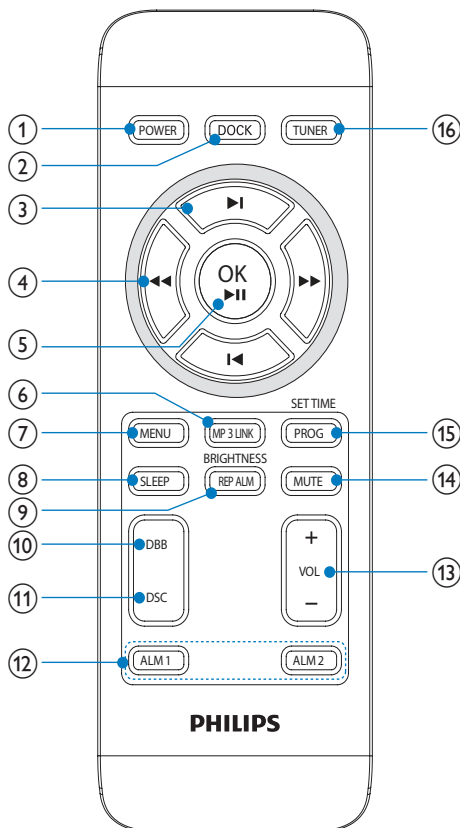
- Repeat the alarm.
- Adjust the display brightness.

⑨ SOURCE

- Select a source: DOCK1, DOCK2, FM tuner, or MP3 link.

- ⑩ **OK/▶||**
 - Start or pause iPod/iPhone/iPad play.
 - Confirm selection.
 - Select FM stereo or FM mono.
- ⑪ **◀||▶**
 - Skip to the previous/next audio file.
 - Select a preset radio station.
 - Adjust time.
- ⑫ **VOL +/-**
 - Adjust volume.
- ⑬ **Dock1**
 - Load an iPod/iPhone.
- ⑭ **Dock2**
 - Load an iPod/iPhone/iPad.
- ⑮ **FM antenna**
 - Improve FM reception.
- ⑯ **MP3-LINK**
 - Jack for an external audio device.

Overview of the remote control



- ① **POWER**
 - Turn on the unit or switch to standby mode.
 - Stop alarm.
 - Deactivate the sleep timer.
- ② **DOCK**
 - Select Dock1 or Dock2 source.

3 Get started

! Caution

- Use of controls or adjustments or performance of procedures other than herein may result in hazardous radiation exposure or other unsafe operation.

Always follow the instructions in this chapter in sequence.

If you contact Philips, you will be asked for the model and serial number of this apparatus. The model number and serial number are on the bottom of the apparatus. Write the numbers here:

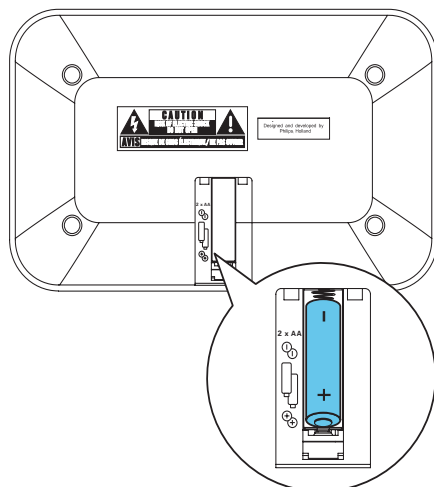
Model No. _____

Serial No. _____

Install batteries

≡ Note

- You can only use AC power as power supply. Batteries (not supplied) are for backup purpose.



- ③ **⏮️⏭️**
 - Skip to the previous/next audio file.
 - Select a preset radio station.
 - Navigate through the iPod/iPhone/iPad menu.
 - Adjust time.
- ④ **⏮️⏭️**
 - Search within an audio file.
 - Tune to a radio station.
- ⑤ **OK/⏸️**
 - Start or pause iPod/iPhone/iPad play.
 - Confirm selection.
 - Select FM stereo or FM mono.
- ⑥ **MP3 LINK**
 - Select external audio device source.
- ⑦ **MENU**
 - Select the iPod/iPhone menu.
- ⑧ **SLEEP**
 - Set the sleep timer.
- ⑨ **BRIGHTNESS/REP ALM**
 - Adjust the display brightness.
 - Repeat the alarm.
- ⑩ **DBB**
 - Turn on or off dynamic bass enhancement.
- ⑪ **DSC**
 - Select a preset sound setting.
- ⑫ **ALM 1/ALM 2**
 - Set the alarm timer.
 - Turn off the alarm tone.
 - View alarm settings.
- ⑬ **VOL +/-**
 - Adjust volume.
- ⑭ **MUTE**
 - Mute volume.
- ⑮ **SET TIME/PROG**
 - Set the clock and date.
 - Program radio stations.
- ⑯ **TUNER**
 - Select the tuner source.

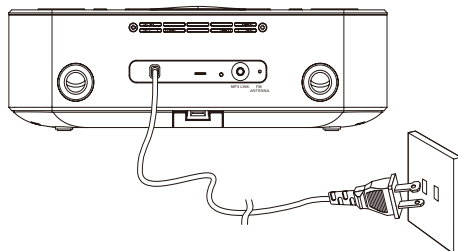
- 1 Open the battery compartment.
- 2 Insert 2 x R6/UM-3/AA size batteries with correct polarity (+/-) as indicated.
- 3 Close the battery compartment.

! Caution

- Remove battery if it is exhausted or will not be used for a long time.
- Batteries contain chemical substances, so they should be disposed of properly.
- Perchlorate Material-special handling may apply. See www.dtsc.ca.gov/hazardouswaste/perchlorate.

≡ Note

- The type plate is located on the bottom of the main unit.



Prepare the remote control

! Caution

- Risk of explosion! Keep batteries away from heat, sunshine, or fire. Never discard batteries in fire.

- 1 Open the battery compartment.
- 2 Insert one button battery with correct polarity (+/-) as indicated.
- 3 Close the battery compartment.

≡ Note

- If you are not going to use the remote control for a long time, remove the batteries.

- 1 Connect the AC power cord to the wall outlet.

Set time and date

- 1 In standby mode, press and hold **SET TIME** for two seconds.
↳ The hour digits begin to blink.
- 2 Press **▶||** to select the 12/24 hour format.
- 3 Press **◀▶** to set the hour.
- 4 Press **SET TIME** to confirm.
↳ The minute digits begin to blink.
- 5 Repeat steps 3-4 to set the minute, year, month, and day.

* Tip

- In 12 hour format, [MONTH--DAY] is displayed.
- In 24 hour format, [DAY--MONTH] is displayed.

Connect power

! Caution

- Risk of product damage! Ensure that the power voltage corresponds to the voltage printed on the back or underside of the apparatus.
- Risk of electric shock! When you unplug the AC power cord, always pull the plug from the socket. Never pull the cord.
- Before connecting the AC power cord, ensure you have completed all other connections.

Turn on

- 1 Press **POWER**.
↳ The unit switches to the last selected source.

Switch to standby

- 1 Press **POWER** again to switch the unit to standby mode.
↳ The time and date (if set) appear on the display panel.

4 Play

Play from iPod/iPhone/iPad

You can enjoy audio from iPod/iPhone/iPad through this unit.

Compatible iPod/iPhone/iPad

Apple iPod and iPhone models with a 30-pin dock connector.

Made for:

- iPod 4G
- iPod 5G
- iPod nano 1G/2G/3G/4G/5G/6G
- iPod Classic
- iPod Touch 1G/2G/3G/4G,
- iPod Mini
- iPhone
- iPhone 3G
- iPhone 3GS
- iPhone 4
- iPad WiFi
- iPad 3G

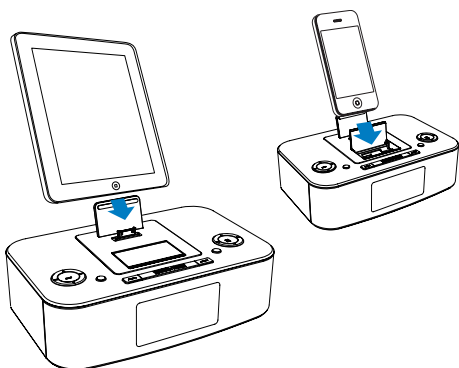


Note

- iPod with color display, iPod classic, and iPod with video are not compatible with dock charging.

Listen to the iPod/iPhone/iPad

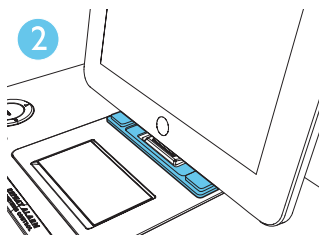
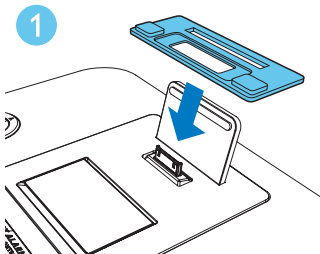
- 1 Press **DOCK** key to select dock source.
- 2 Place the iPod/iPhone/iPad into the dock.



- To pause/resume play, press **OK/▶||**.
- To skip to a track, press **◀▶**.
- To search during play, press and hold **◀▶▶**, then release to resume normal play.
- To go back to the previous iPod/iPhone menu, press **MENU**.
- To scroll through the menu, press **◀** / **▶**.
- To confirm a selection, press **OK/▶||**.
 ➔ If no key is pressed for more than 10 seconds, **OK/▶||** acts back as the play/pause key.

Install the rubber pad

If necessary, install the supplied rubber pad to keep the iPad 2 stable before you place the iPad 2.



Charge the iPod/iPhone/iPad

When the unit is connected to power, the docked iPod/iPhone/iPad begins to charge.



Tip

- For certain iPod models, it may take up to a minute before the charging indication appears.
- If clock is not manually set, when iPod/iPhone/iPad is connected, the clock radio synchronizes time from the iPod/iPhone/iPad automatically.

Play from an external device

You can also listen to an external audio device through this unit.

- 1 Press **MP3 LINK** to select the MP3 link source.
- 2 Connect the supplied MP3 link cable to:
 - the **MP3 LINK** jack (3.5mm) on the back of the unit.
 - the headphone jack on an external device.
- 3 Start to play the device (see the device user manual).

5 Listen to radio



Note

- Only FM radio reception is available on this unit.

Tune to a radio station



Tip

- Position the antenna as far as possible from TV, VCR or other radiation source.



Note

- For optimal reception, fully extend and adjust the position of the antenna.

- 1 Press **TUNER** to select FM tuner.
- 2 Press and hold **◀▶** for more than 2 seconds.
 - ↳ [SRCH] (search) is displayed.
 - ↳ The radio tunes to a station with strong reception automatically.
- 3 Repeat step 2 to tune to more stations.
 - To tune to a weak station, press **◀▶** repeatedly until you find optimal reception.

Program radio stations automatically

You can program a maximum of 20 preset radio stations.

- 1 In the tuner mode, press and hold **SET TIME/PROG** for more than 2 seconds to activate automatic program mode.
 - ↳ [AUTO] (auto) is displayed.

- ↳ The unit automatically stores radio stations with sufficient signal strength..
- ↳ The first programmed radio station is broadcast automatically.

Program radio stations manually

You can program a maximum of 20 preset radio stations.

- 1 Tune to a radio station.
- 2 Press **SET TIME/PROG** to activate the program mode.
- 3 Press **◀▶** to select a number.
- 4 Press **SET TIME/PROG** to confirm.
- 5 Repeat the above steps to program other stations.



Tip

- To overwrite a programmed station, store another station in its place.
- To select FM stereo or FM mono, press **OK**.

Select a preset radio station

- 1 Press **◀▶** to select a preset number.

6 Other features

Set the alarm timer

You can set two alarms which go off at different time.

- 1 Make sure that you have set the clock correctly. (See "Get started - Set time and date".)
- 2 Press and hold **ALM 1** or **ALM 2** for two seconds.
↳ [AL 1] or [AL 2] begin to blink.
- 3 Press **SOURCE** on the top panel to select an alarm sound source: DOCK1, DOCK2, FM tuner, or buzzer.
- 4 Press **ALM 1** or **ALM 2**.
↳ The hour digits begin to blink.
- 5 Press **◀▶** repeatedly to set the hour.
- 6 Press **ALM 1** or **ALM 2** to confirm.
↳ The minute digits begin to blink.
- 7 Repeat steps 5-6 to set the minute.
- 8 Repeat steps 5-6 to select whether to ring alarm the whole week, on weekdays, or at weekend.
- 9 Repeat steps 5-6 to set the alarm volume.

Tip

- You can create a playlist in iTunes called "PHILIPS" and import it to your iPod/iPhone as alarm source.
- If no playlist is created in the iPod/iPhone or there is no song in the playlist, the unit will wake to songs in the iPod/iPhone.

- ↳ If the timer is deactivated, [AL1] or [AL2] is displayed.

Repeat alarm

- 1 When the alarm rings, press **BRIGHTNESS/REP ALM**.
↳ The alarm repeats ringing minutes later.

Tip

- You can press **◀▶** to adjust the interval to repeat alarm.

Stop alarm ring

- 1 When the alarm rings, press the corresponding **ALM 1** or **ALM 2**.
↳ The alarm stops but the alarm settings remain.

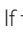

View the alarm settings

- 1 Press **ALM 1** or **ALM 2**.

Adjust display brightness

- 1 Press **BRIGHTNESS/REP ALM** repeatedly to select different levels of display brightness.

Activate and deactivate the alarm timer

- 1 Press **ALM 1** or **ALM 2** repeatedly to activate or deactivate the timer.
↳ If the timer is activated, [ AL 1] or [ AL2] is displayed.

7 Adjust sound

Adjust volume level

- 1 During play, press **VOL +/-** to increase/decrease the volume level.

Mute sound

- 1 During play, press **MUTE** to mute/unmute sound.

Select a preset sound effect

- 1 During play, press **DSC** repeatedly to select:
 - **[ROCK]** (rock)
 - **[JAZZ]** (jazz)
 - **[POP]** (pop)
 - **[CLASSIC]** (classic)
 - **[FLAT]** (flat)

Enhance bass

- 1 During play, press **DBB** to turn on or off dynamic bass enhancement.
↳ If DBB is activated, **[DBB]** is displayed.

8 Product information



Note

- Product information is subject to change without prior notice.

Specifications

Amplifier

Rated Output Power	2 x 5 W RMS
Frequency Response	40 -20000 Hz, -3dB
Signal to Noise Ratio	>67 dB
Aux Input (MP3 link)	750 mV RMS 20 kohm

FM

Tuning Range	FM 87.5 - 108 MHz
Tuning grid	100 KHz
- Mono, 26 dB S/N Ratio	<22 dB
- Stereo, 46 dB S/N Ratio	<51 dB
Search Sensitivity	<41 dB
Total Harmonic Distortion	<2%
Signal to Noise Ratio	>45 dB

Speakers

Speaker Impedance	4 ohm
Speaker Driver	57mm
Sensitivity	>84dB/m/W

General information

AC power	120 V, 60 Hz
Operation Power Consumption	<15 W
Standby Power Consumption (clock display)	<1 W
Dimensions	
- Main Unit (W x H x D)	263 x114 x 165 mm
Weight	
- With Packaging	2.4 kg
- Main Unit	1.4 kg

9 Troubleshooting



Warning

- Never remove the casing of this apparatus.

To keep the warranty valid, never try to repair the system yourself.

If you encounter problems when using this apparatus, check the following points before requesting service. If the problem remains unsolved, go to the Philips web site (www.philips.com/welcome). When you contact Philips, ensure that the apparatus is nearby and the model number and serial number are available.

No power

- Ensure that the AC power plug of the unit is connected properly.
- Ensure that there is power at the AC outlet.
- Ensure that the batteries are inserted correctly.

No sound

- Adjust the volume.

No response from the unit

- Disconnect and reconnect the AC power plug, then turn on the unit again.

Poor radio reception

- Increase the distance between the unit and your TV or VCR.
- Fully extend the FM antenna.

Timer does not work

- Set the clock correctly.
- Switch on the timer.

Clock/timer setting erased

- Power has been interrupted or the power plug has been disconnected.
- Reset the clock/timer.

P&F USA Inc.
PO Box 2248
Alpharetta, GA 30023-2248
Phone 1 866 309 0845

Meet Philips at the Internet
<http://www.philips.com/welcome>

