

User Manual	5
Manuel D'utilisation	54
Manual de Instrucciones	104



Thank you for choosing Philips.

Need help fast?

Read your Quick Use/Start Guide and/or Owner's Manual first for quick tips that make using your Philips product more enjoyable.

If you have read your instructions and still need assistance, you may access our online help at

www.usasupport.philips.com

or call

1-888-PHILIPS (744-5477)

while with your product
(and Model / Serial number)



Philips vous remercie de votre confiance.

Besoin d'une aide rapide?

Les Guide d'utilisation rapide et Manuel de l'utilisateur regorgent d'astuces destinées à simplifier l'utilisation de votre produit Philips.

Toutefois, si vous ne parvenez pas à résoudre votre problème, vous pouvez accéder à notre aide en ligne à l'adresse

www.usasupport.philips.com

ou faites le

1-800-661-6162 (Francophone)

1-888-PHILIPS (744-5477) (English speaking)

Veillez à avoir votre produit à portée de main
(et model / serial nombre)



Gracias por escoger Philips.

Necesita ayuda inmediata?

Lea primero la Guía de uso rápido o el Manual del usuario, en donde encontrará consejos que le ayudarán a disfrutar plenamente de su producto Philips.

Si después de leerlo aún necesita ayuda, consulte nuestro servicio de asistencia en línea en

www.usasupport.philips.com

o llame al teléfono

1-888-PHILIPS (744-5477)

y tenga a mano el producto
(y número de model / serial)



PHILIPS

Return your Product Registration Card today to get the very most from your purchase.

Registering your model with PHILIPS makes you eligible for all of the valuable benefits listed below, so don't miss out. Complete and return your Product Registration Card at once to ensure:

*Proof of Purchase

Returning the enclosed card guarantees that your date of purchase will be on file, so no additional paperwork will be required from you to obtain warranty service.

*Product Safety Notification

By registering your product, you'll receive notification - directly from the manufacturer - in the rare case of a product recall or safety defect.

*Additional Benefits of Product Ownership

Registering your product guarantees that you'll receive all of the privileges to which you're entitled, including special money-saving offers.

PHILIPS

**Congratulations on your purchase,
and welcome to the "family!"**

Dear PHILIPS product owner:

Thank you for your confidence in PHILIPS. You've selected one of the best-built, best-backed products available today. We'll do everything in our power to keep you happy with your purchase for many years to come.

As a member of the PHILIPS "family," you're entitled to protection by one of the most comprehensive warranties and outstanding service networks in the industry. What's more, your purchase guarantees you'll receive all the information and special offers for which you qualify, plus easy access to accessories from our convenient home shopping network.


Most importantly, you can count on our uncompromising commitment to your total satisfaction.


All of this is our way of saying welcome - and thanks for investing in a PHILIPS product.

P.S. To get the most from your PHILIPS purchase, be sure to complete and return your Product Registration Card at once.

Know these safety symbols



 This "bolt of lightning" indicates uninsulated material within your unit may cause an electrical shock. For the safety of everyone in your household, please do not remove product covering.

 The "exclamation point" calls attention to features for which you should read the enclosed literature closely to prevent operating and maintenance problems.

WARNING: To reduce the risk of fire or electric shock, this apparatus should not be exposed to rain or moisture, and objects filled with liquids, such as vases, should not be placed on this apparatus.

CAUTION: To prevent electric shock, match wide blade of plug to wide slot, fully insert.

ATTENTION: Pour éviter les choc électriques, introduire la lame la plus large de la fiche dans la borne correspondante de la prise et pousser jusqu'au fond.

For Customer Use

Enter below the Serial No. which is located on the rear of the cabinet. Retain this information for future reference.

Model No. _____

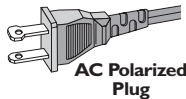
Serial No. _____

PHILIPS Visit our World Wide Web Site at <http://www.usasupport.philips.com>

IMPORTANT SAFETY INSTRUCTIONS

1. Read these instructions.
2. Keep these instructions.
3. Heed all warnings.
4. Follow all instructions.
5. Do not use this apparatus near water.
6. Clean only with dry cloth.
7. Do not block any ventilation openings. Install in accordance with the manufacturer's instructions.
8. Do not install near any heat sources such as radiators, heat registers, stoves, or other apparatus (including amplifiers) that produce heat.

9. Do not defeat the safety purpose of the polarized or grounding-type plug.




A polarized plug has two blades with one wider than the other. A grounding type plug has two blades and a third grounding prong. The wide blade or the third prong are provided for your safety. If the provided plug does not fit into your outlet, consult an electrician for replacement of the obsolete outlet.

10. Protect the power cord from being walked on or pinched, particularly at plugs, convenience receptacles, and the point where they exit from the apparatus.
11. Only use attachments/accessories specified by the manufacturer.

Class II equipment symbol



This symbol indicates that the unit has a double insulation system

12.  Use only with the cart, stand, tripod, bracket, or table specified by the manufacturer or sold with the apparatus. When a cart is used, use caution when moving the cart/apparatus combination to avoid injury from tip-over:

13. Unplug this apparatus during lightning storms or when unused for long periods of time.

14. Refer all servicing to qualified service personnel. Servicing is required when the apparatus has been damaged in any way, such as power-supply cord or plug is damaged, liquid has been spilled or objects have fallen into the apparatus, the apparatus has been exposed to rain or moisture, does not operate normally, or has been dropped.

15. Battery usage **CAUTION** – To prevent battery leakage which may result in bodily injury, property damage, or damage to the unit:

- Install **all** batteries correctly, + and - as marked on the unit.
- Do not mix batteries (**old** and **new** or **carbon** and **alkaline**, etc.).
- Remove batteries when the unit is not used for a long time.

16. Apparatus shall not be exposed to dripping or splashing.

17. Do not place any sources of danger on the apparatus (e.g. liquid filled objects, lighted candles).

18. This product may contain lead and mercury. Disposal of these materials may be regulated due to environmental considerations.

For disposal or recycling information, please contact your local authorities or the Electronic Industries Alliance : www.eiae.org.

EL 6475-E005: 04/01

Canada

English:

This digital apparatus does not exceed the Class B limits for radio noise emissions from digital apparatus as set out in the Radio Interference Regulations of the Canadian Department of Communications.

Français:

Cet appareil numérique n'émet pas de bruits radioélectriques dépassant les limites applicables aux appareils numériques de Class B prescrites dans le Règlement sur le Brouillage Radioélectrique édicté par le Ministère des Communications du Canada.

CAUTION

Use of controls or adjustments or performance of procedures other than herein may result in hazardous radiation exposure or other unsafe operation.

ATTENTION

L'utilisation des commandes ou réglages ou le non-respect des procédures ci-incluses peuvent se traduire par une exposition dangereuse à l'irradiation.

ATENCIÓN

El uso de mando o ajustes o la ejecución de métodos que no sean los aquí descritos puede ocasionar peligro de exposición a radiación.

This warning label is located on the rearside or inside this laser product

CAUTION: INVISIBLE LASER RADIATION WHEN OPEN. DO NOT STARE INTO BEAM.

DANGER: INVISIBLE LASER RADIATION WHEN OPEN. AVOID DIRECT EXPOSURE TO BEAM.

VARO! AVATTAESSA JA SUOJALUKITUS OHITETTAESSA OLET ALTTIINANAKYMATTOMAAALLE LASERSATELYLLE. ÄLÄ KATSO SATEESEEN.

WARNING! OSYNIJUG LASERSTRÄLNING NÄR DENNA DEL ÄR ÖPPNAD. OCH SPÄRREN ÄR URKOPPLAD. BETRÄKTA EJ STRÄLEN.

or

DANGER - Invisible laser radiation when open. AVOID DIRECT EXPOSURE TO BEAM.

CONSUMERS SHOULD NOTE THAT NOT ALL HIGH DEFINITION TELEVISION SETS ARE FULLY COMPATIBLE WITH THIS PRODUCT AND MAY CAUSE ARTIFACTS TO BE DISPLAYED IN THE PICTURE. IN CASE OF 525 OR 625 PROGRESSIVE SCAN PICTURE PROBLEMS, IT IS RECOMMENDED THAT THE USER SWITCH THE CONNECTION TO THE 'STANDARD DEFINITION' OUTPUT. IF THERE ARE QUESTIONS REGARDING OUR TV SET COMPATIBILITY WITH THIS MODEL 525p AND 625p DVD PLAYER, PLEASE CONTACT OUR CUSTOMER SERVICE CENTER.

LASER

Type	Semiconductor laser
	GaAlAs
Wave length	650~660 nm (DVD) 784~796 nm (CD)
Output Power	7 mW (DVD) 10 mW (VCD/CD)
Beam divergence	60 degree

ATTENTION!

For Customer Use:

Read carefully the information located at the bottom of your main DVD system and enter below the Serial No. Retain this information for future reference.

Model No. HTS8000S

Serial No. _____

Declaration of Conformity

Model number: HTS8000S
Trade Name: Philips
Responsible Party: Philips Consumer Electronics
A Division of Philips Electronics
North America Corp.
P. O. Box 671539
Marietta, GA 30006-0026

English 6

Français 54

Español 104

Environmental information

All unnecessary packaging has been omitted. We have tried to make the packaging easy to separate into three materials: cardboard (box), polystyrene foam (buffer) and polyethylene (bags, protective foam sheet).

Your system consists of materials which can be recycled and reused if disassembled by a specialized company. Please observe the local regulations regarding the disposal of packaging materials, exhausted batteries and old equipment.

Manufactured under license from Dolby Laboratories. “Dolby”, “Pro Logic” and the double-D symbol are trademarks of Dolby Laboratories.

Manufactured under license from Digital Theater Systems, Inc. U.S. Pat. Nois. 5,451,942; 5,956,674; 5,974,380; 5,978,762; 6,226,616; 6,487,535 and other U.S. and world-wide patents issued and pending. “DTS” and “DTS Digital Surround” are registered trademarks of Digital Theater Systems, Inc. Copyright 1996, 2003 Digital Inc. All Rights Reserved.

DivX[®], DivX Certified, and associated logos are trademarks of DivX Networks, Inc and are used under license.



As an ENERGY STAR[®] partner; Philips has determined that this product meets the ENERGY STAR[®] guidelines for energy efficiency.

This product incorporates copyright protection technology that is protected by method claims of certain U.S. patents and other intellectual property rights owned by Macrovision Corporation and other rights owners. Use of this copyright protection technology must be authorized by Macrovision Corporation, and is intended for home and other limited viewing uses only unless otherwise authorized by Macrovision Corporation. Reverse engineering or disassembly is prohibited.

This system complies with the FCC rules, Part 15 and with 21 CFR 1040.10. Operation is subject to the following two conditions:

- This device may not cause harmful interference, and**
- This device must accept any interference received, including interference that may cause undesired operation.**

Contents

General Information

Setup	8
Supplied accessories	8
Cleaning discs	8

System Placement

Positioning for best effect	9
Placing the SonoWave speakers	9
Placing the AV subwoofer	10
Placing the main DVD system	10
Placing the junction box	10

Overall Connection Overview 11

Optional Setup

Mounting the main DVD system on the wall	12
Mounting the SonoWave speakers on the wall	13

Optional Connections

Connecting to a Progressive Scan TV ...	14
Connecting to a single antenna jack TV	14
Connecting to outdoor FM antenna terminal	15
Connecting to an analog audio/video device	16
Connecting to a digital audio device	16

Main Unit 17

Remote Control 18–19

Getting Started

Step 1: Preparing the remote control ...	20
Using the remote control to operate the system	20
Step 2: Switching on the DVD system ..	20
Switching to Eco Power standby mode	20
Step 3: Setting the TV	21
Setting up Progressive Scan feature (for Progressive Scan TV only) ...	21–22
Selecting the matching color system	23
Setting the TV Display	23
Step 4: Setting language preferences	24
On-Screen Display (OSD) language .	24
Audio, Subtitle and Disc menu languages	24

Disc Operations

Playable discs	25
Playing a disc	26
Auto Eco Power standby mode	26
Basic playback controls	26
Selecting various repeat/shuffle functions	27
Other operations for video playback (DVD/VCD/SVCD)	27
Using the Disc Menu	27
Viewing playback information	28
Resuming playback from the last stopped point	28
Zooming in	28
Changing sound track language	29
Changing subtitle language (DVD only)	29
Preview Function (VCD only)	29
Playing MP3/JPEG/MPEG-4 disc	30
Playing MP3 music and JPEG picture simultaneously	30
Playing a picture disc (slide show)	31
Preview Function	31
Zoom picture	31
Rotating/Flipping the picture	31
Supported JPEG picture formats	31
Playing a Super Audio CD (SACD)	32
Playing a DivX disc	32

DVD Setup Menu Options

Accessing General Setup Page	33
Locking/Unlocking the disc for viewing	33
Programming disc tracks (not for Picture CD/MP3/SACD)	33–34
OSD language	34
Screen Saver – turning on/off	34
DivX(R) VOD registration code	34
Accessing Audio Setup Page	35
Setting the analog output	35
Night mode – turning on/off	35
CD Upsampling	35
Accessing Video Setup Page	36
TV Type	36
TV Display	36
Progressive function-turning on/off ..	36
Picture Setting	37
Black Level - turning on/off	38
Closed Captions - turning on/off	38
Accessing Preference Setup Page	39
Audio, Subtitle, Disc Menu	39
Restricting playback by Parental Control	39–40
PBC (Playback Control)	40
MP3/JPEG menu– turning on/off	40
Changing the Password	41
Setting the DivX Subtitle font	41
Restoring to original settings	41

Tuner Operations

Tuning to radio stations	42
Presetting radio stations	42
Using the Plug and Play	42
Automatic presetting	43
Manual presetting	43
Selecting a preset radio station	43
Deleting a preset radio station	43

Sound and Volume Controls

Speakers (SonoWave speakers) adjustment	44
AV subwoofer adjustment	45
Selecting surround sound	45
Selecting digital sound effects	45
Volume control	45

Other Functions

Setting the Sleep timer	46
Dimming system's display screen	46
Using the remote to operate your 'Philips' television	46

Specifications

Troubleshooting

Glossary

General Information

CAUTION!

The machine does not contain any user-serviceable parts. Please leave all maintenance work to qualified personnel.

Setup

Finding a suitable location

- Place the set on a flat, hard and stable surface. Do not place the set on a carpet.
- Do not position the set on top of other equipment that might heat it up (e.g., receiver or amplifier.)
- Do not put anything under the set (e.g., CDs, magazines.)

Space for ventilation

- Place the apparatus in a location with adequate ventilation to prevent internal heat build up. Allow at least 10 cm (4.5") clearance from the rear and the top of the set and 5cm (2.3") from the left and right to prevent overheating.

Avoid high temperatures, moisture, water and dust

- Apparatus shall not be exposed to dripping or splashing.
- Do not place any sources of danger on the apparatus (e.g., liquid filled objects, lighted candles.)

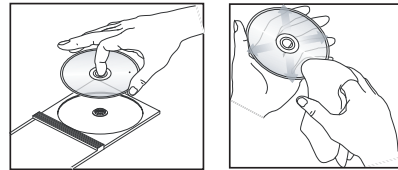
Accessories supplied

- 1 Junction Box with velcro strip pad
- 1 AV subwoofer with 4 rubber feet
- 2 XonoWave speakers with 2 sets of wall mounting brackets, screws and wall plugs
- 1 set of wall mounting bracket, screws and wall plugs for main DVD system
- 1 remote control with battery inserted
- 1 VGA cable (for connecting between the AV subwoofer and Junction Box.)
- 1 AC power cable for the AV subwoofer
- Quick Use Guide

Cleaning discs

Some problems occur because the disc inside the player is dirty (frozen picture, sound disruptions, picture distortions.) To avoid these problems, discs should be cleaned on a regular basis.

To clean a disc, use a micro fibre cleaning cloth and wipe the disc from the center to the edge in a straight line.



CAUTION!

Do not use solvents such as benzene, thinner, commercially available cleaners, or anti-static sprays intended for discs.

Since the optical unit (laser) of the DVD system operates at a higher power than regular DVD or CD players, cleaning CDs intended for DVD or CD players may damage the optical unit (laser.) Therefore, refrain from using a cleaning CD.

System Placement

Positioning for best effect

The Philips HTS8000S Home Theater System, with its proprietary 2-speaker SonoWave system, is simple to install compared to other regular home theater systems. However, proper system placement is critical to ensure the most immersive sound experience.

The placement diagrams shown here are only guidelines that provide great system performance, you may find other placement choices that are more suitable for your room layout and provide the sound you enjoy.

Figure (A) : Example of placement on the flat surface

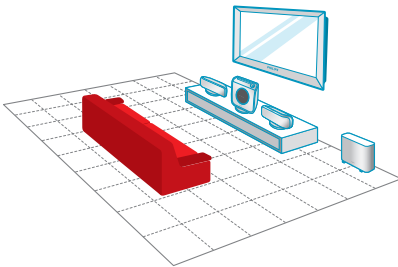
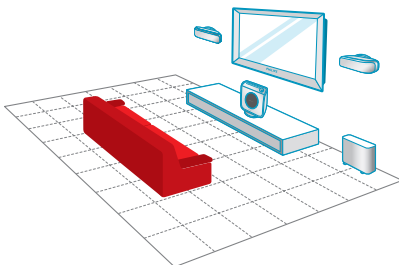


Figure (B) : Example of wall mounting placement



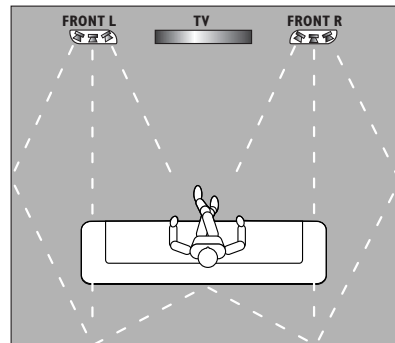
Helpful Hints:

- To avoid magnetic interference, do not position the SonoWave speakers too close to your TV.
- Allow adequate ventilation around the AV subwoofer and DVD system.

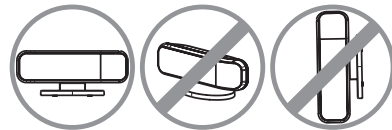
Placing the SonoWave speakers

When placing the SonoWave speakers, ensure that:

- It should be placed at the same height and at the normal listening ear level for the best sound performance.
- It should be placed at equal distance from the TV, the FRONT R at the right hand side and FRONT L at the left hand side (as shown below.)



- It should be faced straight ahead towards the listening area. Do not place at an angle as it would reduce the system performance.



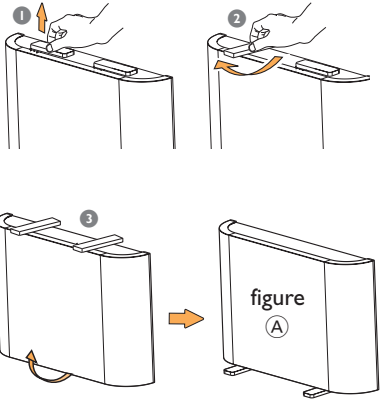
For SonoWave speakers setting, see page 44.

System Placement (continued)

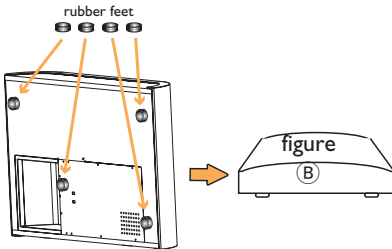
Placing the AV subwoofer

For optimum performance, place the AV subwoofer at the corner of the room, kept at least one meter away from the TV. You can choose to place the AV subwoofer upright (see figure (A)) or lay it flat under the table or shelf (see figure (B)).

- To place the AV subwoofer upright, slightly pull up the feet and rotate clockwise to increase stability.



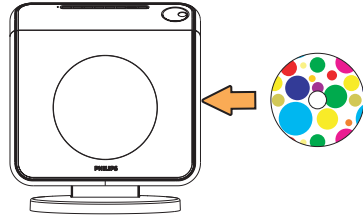
- To lay the AV subwoofer flat (horizontally) on the floor, attach the supplied rubber feet on the bottom surface to allow sufficient ventilation and prevent scratches.



To adjust the volume level of AV subwoofer, see page 45.

Placing the main DVD system

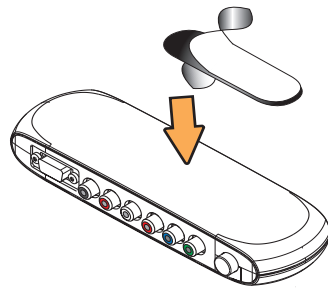
Ensure ample space at the right hand side for ease of disc handling.



Placing the Junction Box

You may place it behind the TV/shelf/table to hide away the cable connection.

For fixing purpose, attach one side of the supplied velcro strip on the junction box and another at the place you wish to fix the junction box.

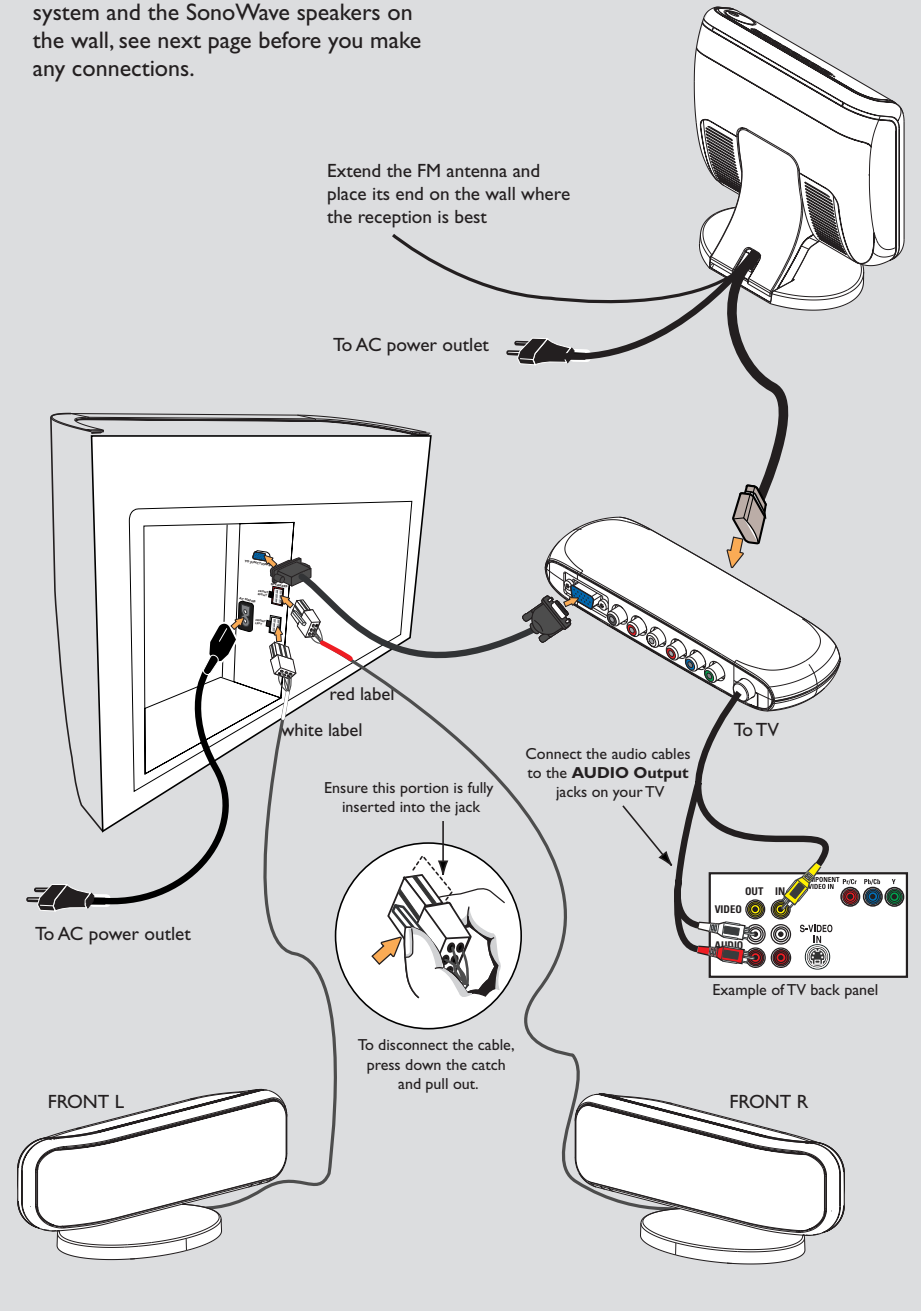


Overall Connection Overview

English

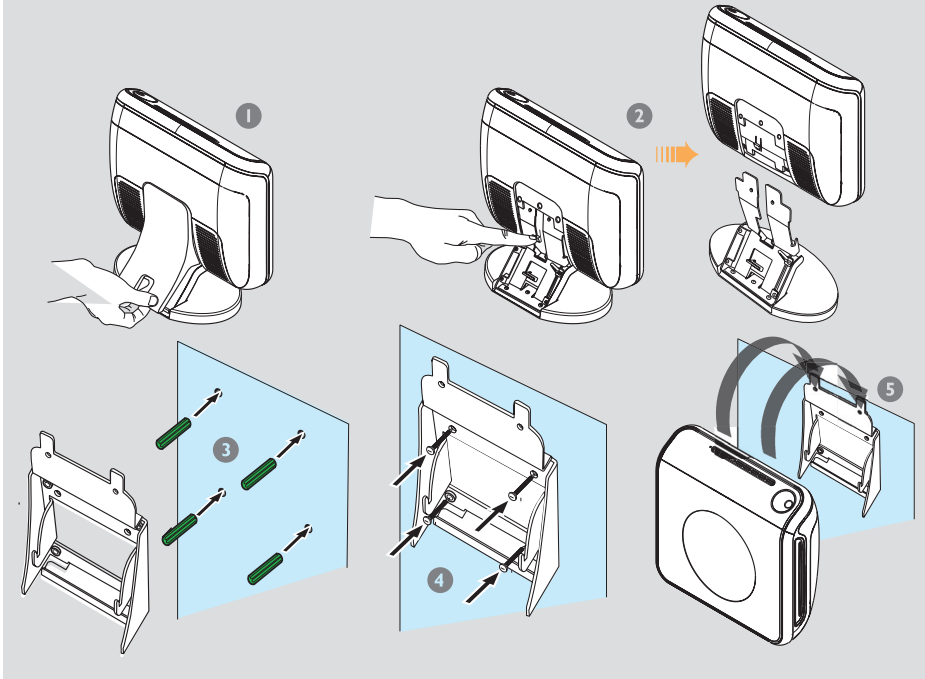
IMPORTANT!

If you wish to mount the main DVD system and the SonoWave speakers on the wall, see next page before you make any connections.



Optional Setup

Mounting the main DVD system on the wall



You can choose to wall mount the main DVD system on the wall. Select a position where nothing obstructs the disc slot on its right hand side.

CAUTION!

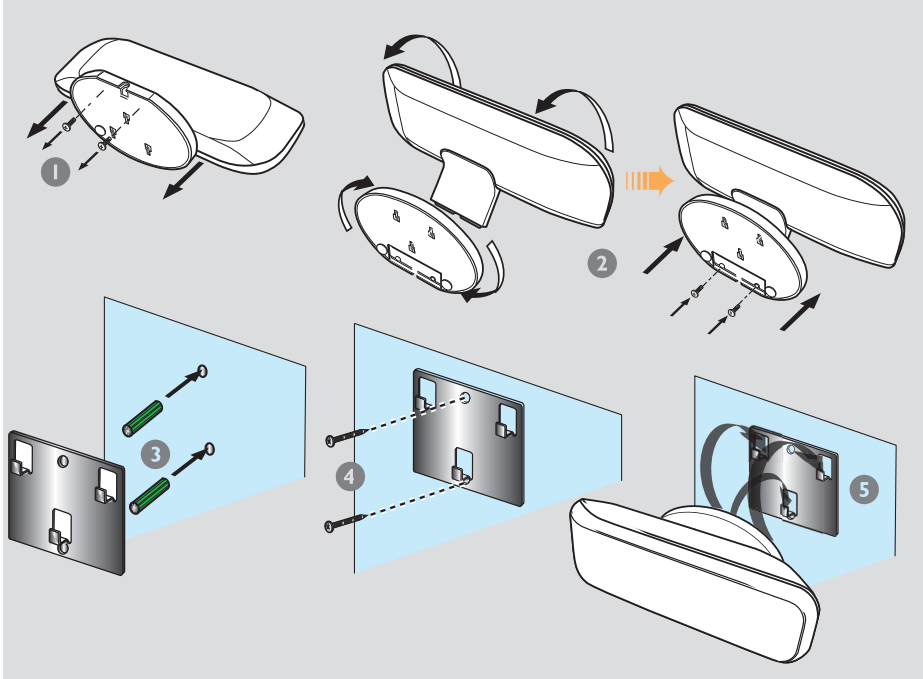
You should get a qualified person to attach the brackets to the wall. DO NOT do it by yourself in order to avoid unexpected damage to the equipment or injury to personnel.

Helpful Hint:

– Philips accepts absolutely no liability for any accidents or damage resulting from inadequate assembly or mounting, misuse or abuse, or natural disasters.

- 1 Remove the back cover from the main DVD system.
- 2 Press on the catch at the center while detaching the main DVD system from its stand.
- 3 Hold the supplied bracket (white color) in position and mark holes on the wall for the screws. Drill holes (around 6.5mm diameter) and insert the rubber wall plugs (green color) into the holes.
- 4 Use the supplied screws to secure the bracket onto the wall.
- 5 Hook the main DVD system firmly onto the mounted bracket by sliding through the bracket to lock into position.

Mounting the SonoWave speakers on the wall



You can choose to hang the SonoWave speakers on the wall. It should be positioned at the normal listening ear level, at the same height and equal distance from the TV.

CAUTION!

You should get a qualified person to attach the brackets to the wall. DO NOT do it by yourself in order to avoid unexpected damage to the equipment or injury to personnel.

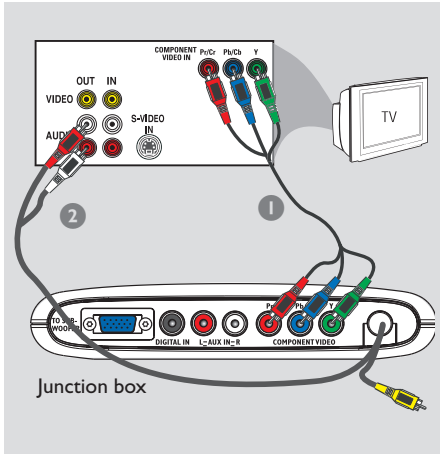
Helpful Hint:

– Philips accepts absolutely no liability for any accidents or damage resulting from inadequate assembly or mounting, misuse or abuse, or natural disasters.

- 1 Remove the base of the SonoWave speakers by loosening the two screws at the bottom.
- 2 Rotate the stand at 180 degrees and tighten the screws.
- 3 Hold the supplied bracket (black color) in position and mark holes on the wall for the screws. Drill holes (around 6.5mm diameter) and insert the rubber wall plugs (green color) into the holes.
- 4 Use the supplied screws to secure the bracket onto the wall.
- 5 Hook the SonoWave speakers onto the mounted brackets by sliding through the bracket to lock into position.

Optional Connections (continued)

Connecting to a Progressive Scan TV

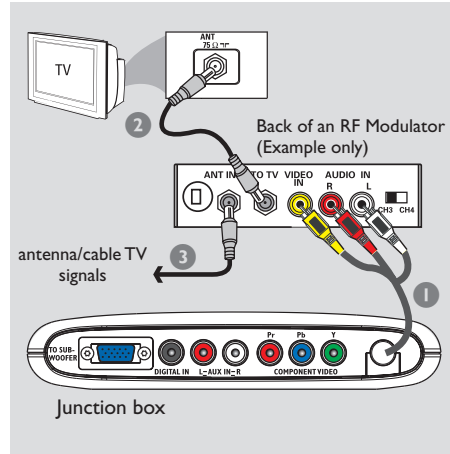


IMPORTANT!

The progressive scan video quality is only possible when using Y Pb Pr and a progressive scan TV is required.

- 1 Use the component video cables (red/blue/green - not supplied) to connect the Junction Box's Y Pb Pr jacks to the corresponding component video input jacks (or labeled as Y Pb/Cb Pr/Cr or YUV) on the TV.
- 2 To hear the TV channels through this DVD system, connect the audio cables (white/red) from the Junction Box to the corresponding AUDIO OUT jacks on the TV.
- Do not connect the video cable from Junction Box to your TV.
- 3 Proceed to pages 21~22 for detailed Progressive Scan set up.

Connecting to a single antenna jack TV



IMPORTANT!

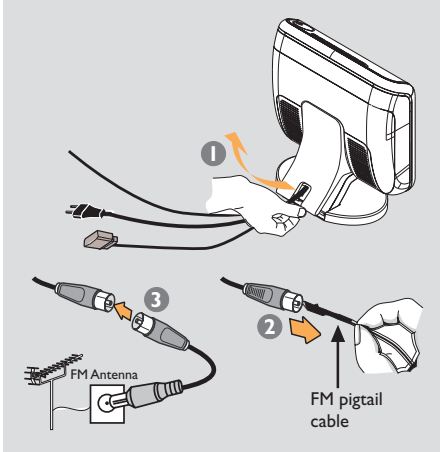
If your TV only has a single Antenna In jack (or labeled as 75 ohm or RF In,) you will need an RF modulator in order to view the DVD playback on the TV.

- 1 Connect the composite video cable (yellow) and audio cables (red/white) from the Junction Box to the respective input jacks on the RF modulator.
- 2 Use an RF coaxial cable (not supplied) to connect the Antenna Input jack on your TV to the antenna output jack on the RF modulator.
- 3 Depends on your existing setup, connect the antenna/cable TV signal from the antenna wall outlet or Cable Box/ Satellite Receiver to the antenna input jack on the RF modulator.

Helpful Hints:

- Set your TV to channel 3 or 4 if you are using an RF modulator.
- See your electronics retailer or contact Philips for details on RF modulator availability and operations.

Connecting to outdoor FM antenna terminal



If the FM reception is poor, you can use an FM coaxial cable (not supplied) to connect the FM 75Ω coaxial cable hidden inside the back cover to the outdoor FM antenna terminal.

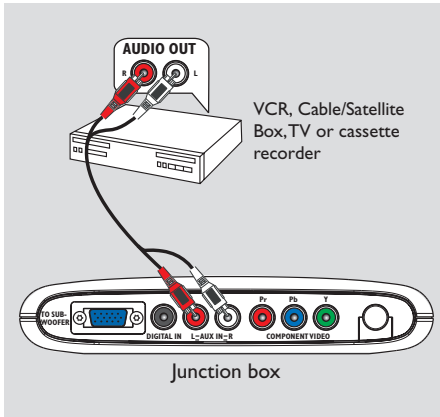
- 1 Open the main DVD system's back cover by lifting up the cover from the bottom.
- 2 Unplug the FM pigtail antenna from the FM 75Ω coaxial cable.
- 3 Connect the FM 75Ω coaxial cable to one end of the FM coaxial cable which is connected to the outdoor FM antenna terminal.

Helpful Hint:

– Position the antennas as far as possible from your TV, VCR or other radiation source to prevent unwanted interference.

Optional Connections (continued)

Connecting to an analog audio/video device



You can connect an analog audio/video device (e.g. VCR, Cable/Satellite Box, TV or cassette recorder) to the Junction Box in order to use the Home Theater Audio System's surround sound capabilities.

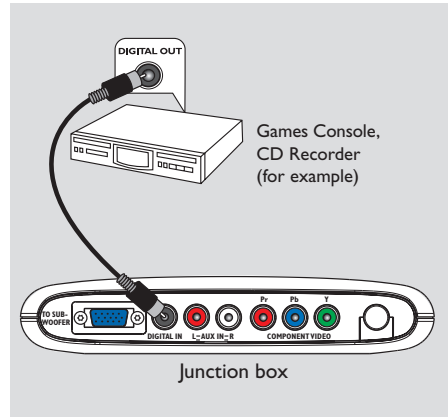
- Connect the Junction Box's **AUX IN (R/L)** jacks to the **AUDIO OUT** jacks on an analog audio/video device.

To listen to the sound, press **SOURCE** repeatedly to select "**AUX**" as the source to play.

Helpful Hints:

- Recording from this DVD system to your VCR is not possible.
- To see the picture of the connected video device (e.g. VCR,) connect the **VIDEO OUT** jack of the device to the **VIDEO IN** jack of the TV, and select the correct input channel on the TV.

Connecting to a digital audio device



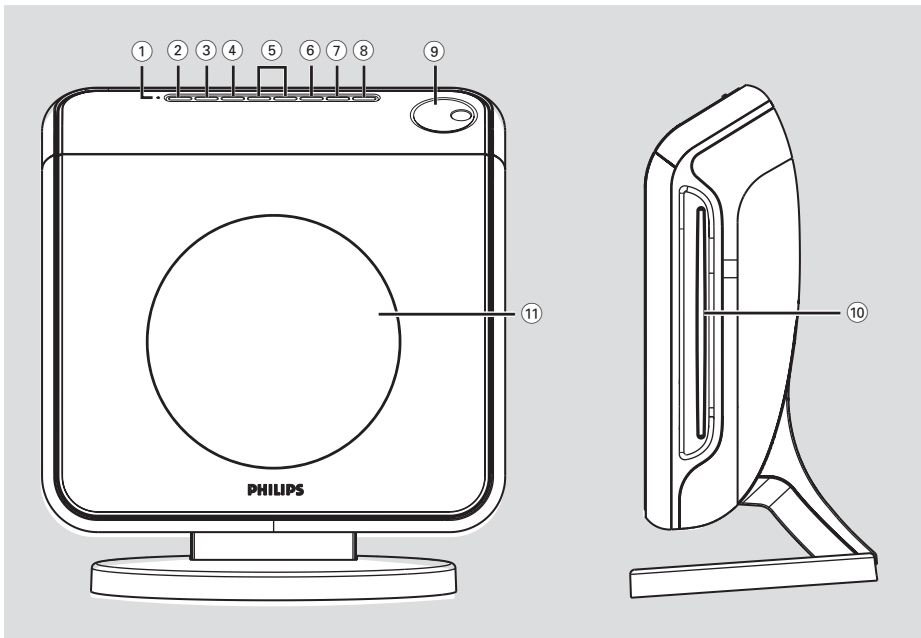
You can connect a digital audio device (e.g. CD recorder) to the Junction Box in order to use the Home Theater Audio System's surround sound capabilities.

- Connect the Junction Box's **DIGITAL IN** jack to the **DIGITAL OUT** jack on a digital audio device.

To listen to the sound, press **SOURCE** repeatedly to select "**DI**" as the source to play.

Helpful Hints:

- You cannot hear or record the SACD or MP3-CD playback if you use the digital connection.
- For your playback through **DIGITAL IN** connection, set the digital output of that player to **PCM** format.
- Always refer to the user manual of the other equipment for complete connection and usage details.



① ECO POWER indicator

- Lights up when in Eco Power standby mode.

② STANDBY ON 

- Switches to Eco Power standby mode, or turns on the system.

③ SOURCE

- Selects the relevant active source mode: DISC, TUNER FM, TV or AUX/DI.

④ SURROUND

- Selects multichannel surround or stereo mode.

⑤ PREV / NEXT

- DISC: select a track or hold down this button to search backward/forward.
- TUNER: tunes the radio frequency up/down.

⑥ PLAY PAUSE

- DISC: starts/pauses playback.
- TUNER: starts preset radio station installation in Plug & Play mode.

⑦ STOP

- Exits an operation.
- DISC: stops playback.
- TUNER: hold down this button to erase the current preset radio station.

⑧ EJECT

- DISC: ejects the disc.

⑨ VOLUME

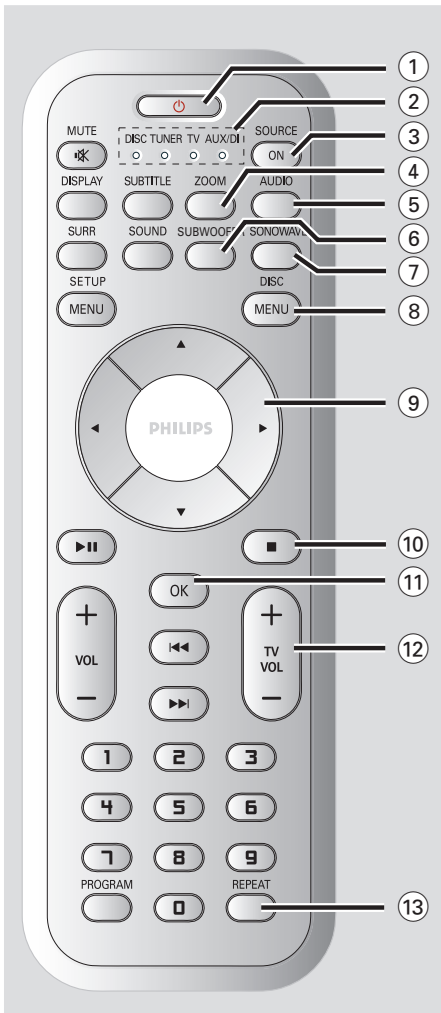
- Adjusts the volume level.

⑩ Disc slot

⑪ System display panel

Remote Control

English

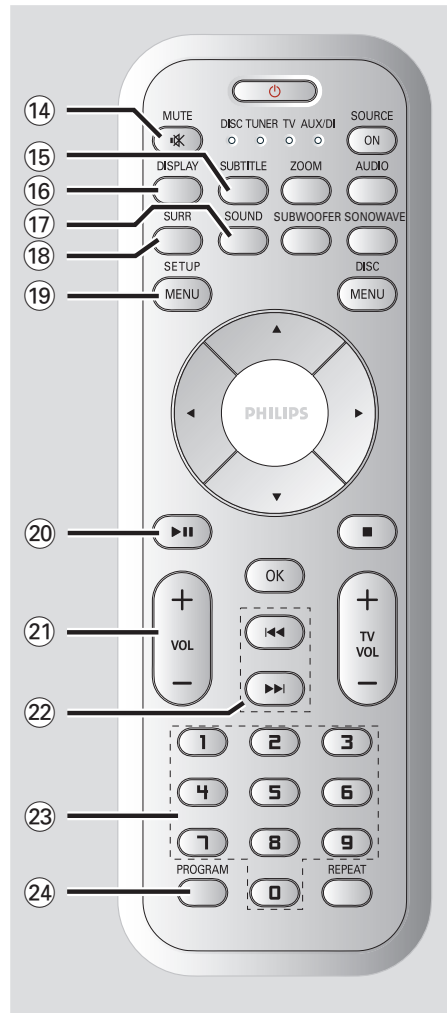


- ① **Power**
 - Switches to Eco Power standby mode.
 - In TV mode, hold down this button to switch Philips TV off/on.
- ② **SOURCE indicator**
 - Indicates the active source.
- ③ **SOURCE ON**
 - Selects the relevant active source mode: DISC, TUNER FM, TV or AUX/DI.

- ④ **ZOOM**
 - DISC: enlarges a picture on the TV screen.
- ⑤ **AUDIO**
 - DISC: selects an audio language (DVD/VCD) or an audio channel (CD.)
 - TUNER: toggles between stereo and mono mode.
- ⑥ **SUBWOOFER**
 - Activates the AV subwoofer setting, then use the VOL + – on the remote control to adjust the output level.
- ⑦ **SONO WAVE**
 - Activates the SonoWave speakers settings. Refer to page 44 for detailed adjustment.
- ⑧ **DISC MENU**
 - DISC: enters or exits disc contents menu.
 - For VCD version 2.0 only; In stop mode, turns on/off playback control (PBC) mode. During playback, returns to main menu.
- ⑨ **◀▶▲▼**
 - DISC: selects movement direction in the menu.
 - TUNER: use ▲▼ to start auto tuning.
 - TUNER: use ▶◀ to select a preset radio station.
- ⑩ **■**
 - Exits an operation.
 - DISC: stops playback. Hold down this button to eject the disc.
 - TUNER: hold down this button to erase the current preset radio station.
- ⑪ **OK**
 - Confirms a selection.
 - Hold down this button to set the sleep timer function.
- ⑫ **TV VOL + –**
 - Adjusts TV volume (Philips TV only.)
- ⑬ **REPEAT**
 - DISC: selects various repeat modes; switches repeat mode off.

Remote Control (continued)

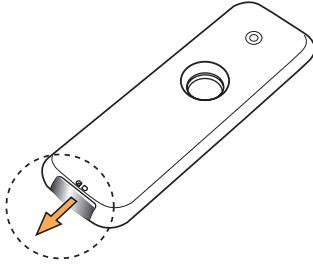
- ⑭ **MUTE**
 - Mutes or restores the volume.
- ⑮ **SUBTITLE**
 - DISC: selects a subtitle language.
- ⑯ **DISPLAY**
 - Hold down this button to change the brightness of the display panel.
 - DISC: displays the current status or disc information.
- ⑰ **SOUND**
 - Selects a sound effect.
 - Hold down this button to turn on/off night mode (optimize the dynamic of the sound output.)
- ⑱ **SURR**
 - Selects multichannel surround or stereo mode.
- ⑲ **SETUP MENU**
 - DISC: enters or exits system setup menu.
- ⑳ **▶ ||**
 - DISC: starts/pauses playback.
 - TUNER: starts storing radio stations in Plug & Play mode.
- ㉑ **VOL + –**
 - Adjusts the volume level.
- ㉒ **◀◀ / ▶▶**
 - DISC: select a track or hold down this button to search backward/forward.
 - TV: selects previous/next channel (Philips TV only.)
 - TUNER: tunes the radio frequency up/ down.
- ㉓ **Numeric Keypad (0-9)**
 - DISC: enters a track/title number.
 - TUNER: enters the preset radio station number.
- ㉔ **PROGRAM**
 - DISC: starts programming.
 - TUNER: starts *automatic/ manual preset programming.



Getting Started

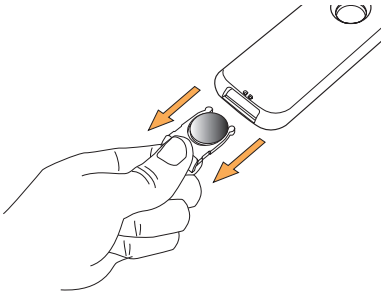
Step 1: Preparing the remote control

Before you start using the remote control, pull out the plastic protective sheet.



To change the battery

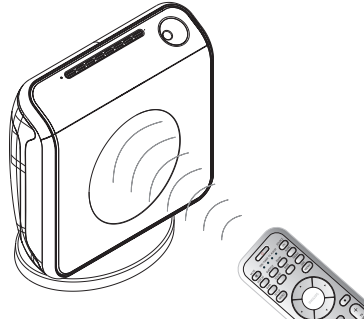
- Pull out the battery compartment and replace with the battery type LITHIUM CR2025.



CAUTION!

- Remove battery if it is exhausted or if the remote control is not to be used for a long time.
- Batteries contain hazardous chemical substances, so they should be disposed of properly.

Using the remote control to operate the system



- 1 Aim the remote control directly at the remote sensor (iR) on the front panel.
- 2 Press **SOURCE** button on the remote to select the mode you wish to control (for example TV, DISC.) The selected source mode will light up on the LED panel for a few seconds.
- 3 Then select the desired function (for example ▶, ◀, ◀◀, ▶▶, ◀▶.)

Step 2: Switching on the DVD system

- Press **SOURCE** button repeatedly to select :
DISC → TUNER FM → TV → AUX
→ DI → DISC

Switching to Eco Power standby mode

- Press **STANDBY ON** (⏻).
→ The display screen will go blank.
→ The Eco Power indicator will light up in red.

Getting Started (continued)

Step 3: Setting the TV

After connecting the DVD system to your TV, you have to switch the TV to the correct program number for the input jack (e.g. 'EXT', '0', 'AV') in order to view the playback from the DVD system.

- 1 Press **SOURCE** button until "DISC" appears on the display panel.
- 2 Turn on the TV and set it to the correct video-in channel. You should see the blue DVD background screen on the TV.
→ Usually this channel is between the lowest and highest channels and may be called FRONT, A/V IN, VIDEO. See your TV manual for more details.
→ Or, you may go to channel 1 on your TV, then press the Channel down button repeatedly until you see the Video In channel.
→ Or, the TV remote control may have a button or switch that chooses between different video modes.
→ Or, set the TV to channel 3 or 4 if you are using an RF modulator.

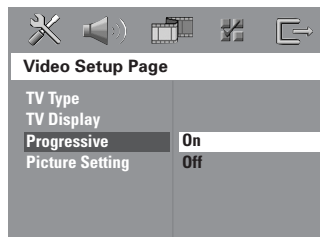
Setting up Progressive Scan feature (for Progressive Scan TV only)

The progressive scan display twice the number of frames per seconds than interlaced scanning (ordinary normal TV system.) With nearly double the number of lines, progressive scan offers higher picture resolution and quality.

IMPORTANT!

Before enabling the progressive scan feature, you must ensure :

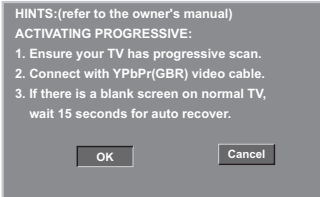
- 1) Your TV can accept progressive signals, a progressive scan TV is required.
 - 2) You have connected the DVD system to your TV using Y Pb Pr (see page 14.)
- 1 Turn off your TV progressive scan mode or turn on interlaced mode (refer to your TV user manual.)
 - 2 Press **SOURCE** button until "DISC" appears on the display panel.
 - 3 Turn on your TV and select the correct Video Input channel (see page 21.)
→ The blue DVD background screen will appear on the TV.
 - 4 Press **SETUP MENU** on the remote.
 - 5 Press **▶** to select 'Video Setup Page.'
 - 6 Select { **Progressive** } > { **On**, } then press **OK** to confirm.



TIPS: The underlined option is the factory default setting.
To return to the previous menu, press **◀**. To remove the menu, press **SETUP MENU**.

Getting Started (continued)

- 7 The below menu will appear on the TV.



- 8 Press **◀** to highlight **OK** in the menu and press **OK** to confirm.

There will be no picture on your TV at this state until you turn on the progressive scan mode on your TV.

- 9 Turn on your TV progressive scan mode (refer to your TV user manual.)
→ The below menu will appear on the TV.



- 10 Press **◀** to highlight **OK** in the menu and press **OK** to confirm.
→ The set up is complete now and you can start enjoy the high quality picture.

If no picture:

- Wait for 15 seconds for the auto recovery.
OR
- 1 Deactivate Progressive Scan feature by pressing the **EJECT** on the DVD system.
- 2 Press **◀** on the remote.
- 3 Press **SUBTITLE** on the remote.
→ The blue DVD background screen will appear on the TV.

Helpful Hint:

– There are some progressive scan TV and High-Definition TV sets that are not fully compatible with this DVD system, resulting in the unnatural picture when playing back a DVD VIDEO disc in the progressive scan mode. In such a case, turn off the progressive scan feature on both the DVD system and your TV set.

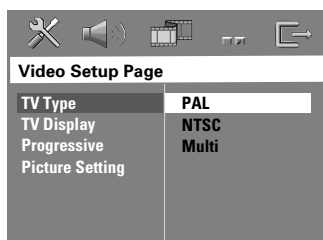
TIPS: The underlined option is the factory default setting.
To return to the previous menu, press **◀**. To remove the menu, press **SETUP MENU**.

Getting Started (continued)

Selecting the matching color system

The color system of the DVD system, DVD and TV should match. Only then will it be possible to play a DVD on this system. Before changing the TV system, determine the color system of your TV.

- 1 In disc mode, press **SETUP MENU**.
- 2 Press **▶** repeatedly to select { Video Setup Page. }
- 3 Use **▲▼** keys to highlight { **TV Type,** } then press **▶**.

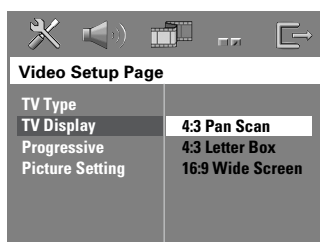


- 4 Use **▲▼** keys to highlight one of the options below:
 - { **PAL** }
Select this if the connected TV has the PAL color system. It will change the video signal of an NTSC disc and output it to PAL format.
 - { **NTSC** }
Select this if the connected TV has the NTSC color system. It will change the video signal of a PAL disc and output it to NTSC format.
 - { **Multi** }
Select this if the connected TV is compatible with both NTSC and PAL (multi-system.) The output format will be in accordance with the video signal of the disc.
- 5 Select a setting and press **OK**.
 - Follow the instructions shown on the TV to confirm the selection (if any.)
 - If a blank/distorted TV screen appears, wait for 15 seconds for the auto recovery.

Setting the TV Display

Set the aspect ratio of the DVD system according to the TV you have connected. The format you select must be available on the disc. If it is not, the setting for TV display will not affect the picture during playback.

- 1 In disc mode, press **SETUP MENU**.
- 2 Press **▶** repeatedly to select { Video Setup Page. }
- 3 Use **▲▼** keys to highlight { **TV Display,** } then press **▶**.



- 4 Use **▲▼** keys to highlight one of the options below:

{ **4:3 Pan Scan** }

Select this if you have a conventional TV and want both sides of the picture to be trimmed or formatted to fit your TV screen.



{ **4:3 Letter Box** }

Select this if you have a conventional TV. In this case, a wide picture with black bands on the upper and lower portions of the TV screen will be displayed.



{ **16:9 Wide Screen** }

Select this if you have a wide-screen TV.



- 5 Select a setting and press **OK**.

TIPS: The underlined option is the factory default setting.
To return to the previous menu, press **◀**. To remove the menu, press **SETUP MENU**.

Getting Started (continued)

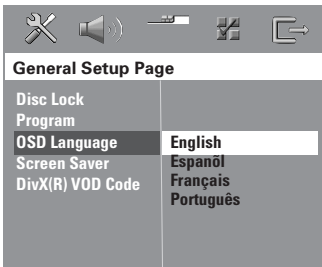
Step 4: Setting language preferences

You can select your preferred language settings so that this DVD system will automatically switch to the language for you whenever you load a disc. If the language selected is not available on the disc, the disc's default language will be used instead.

The OSD (On-Screen Display) language for the system menu will remain as you set it, regardless of the default and optional disc languages.

On-screen display (OSD) language

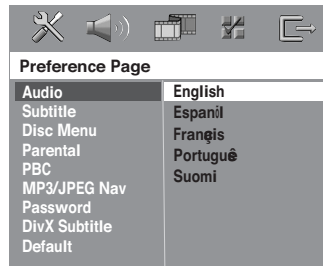
- 1 In disc mode, press **SETUP MENU**.
- 2 Press **▶** to select { General Setup Page. }
- 3 Use **▲▼** keys to highlight { **OSD Language**. } then press **▶**.



- 4 Use **▲▼** keys to select a language and press **OK** to confirm.

Audio, Subtitle and Disc menu languages

- 1 Press **■** twice to stop playback (if any), then press **SETUP MENU**.
- 2 Press **▶** repeatedly to select { Preference Page. }
- 3 Use **▲▼** keys to highlight one of the options below, then press **▶**.
 - { **Audio** } (disc's soundtrack)
 - { **Subtitle** } (disc's subtitles)
 - { **Disc Menu** } (disc's menu)



- 4 Use **▲▼** keys to select a language and press **OK** to confirm.

If the language you want is not in the list, then select { Others. }

Use the **numeric keypad (0-9)** on the remote to enter the 4-digit language code 'XXXX' (see page 153) and press **OK** to confirm.

- 5 Repeat steps 3~4 for other settings.

TIPS: The underlined option is the factory default setting. To return to the previous menu, press **◀**. To remove the menu, press **SETUP MENU**.

Disc Operations

IMPORTANT!

- If the inhibit icon (Ø or X) appears on the TV screen when a button is pressed, it means the function is not available on the current disc or at the current time.
- DVD discs and players are designed with regional restrictions. Before playing a disc, make sure the disc is for the same zone as your player.
- Do not put any objects other than discs on the disc slot. Doing so may cause the disc player to malfunction.

Region Codes

DVDs must be labelled for **ALL** regions or **Region 1** in order to play on this DVD system. You cannot play discs that are labelled for other regions.



English

Helpful Hints:

- It may not be possible to play CD-R/RW or DVD-R/RW in all cases due to the type of disc or condition of the recording.
- If you are having trouble playing a certain disc, remove the disc and try a different one. Improperly formatted discs will not play on this DVD system.

Playable discs



Your DVD home theater system will play:

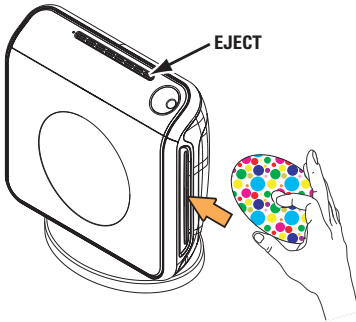
- Digital Versatile Discs (DVDs)
- Video CDs (VCDs)
- Super Video CDs (SVCDs)
- Super Audio CDs (SACDs)
- Finalized DVD+Recordable[Rewritable] (DVD+R[W])
- Audio Compact Discs (CDs)
- MP3 discs, picture (Kodak, JPEG) files on CD-R(W).
 - JPEG/ISO 9660/UDF format
 - JPEG resolution support up to 3072 x 2048
 - Supported sampling frequencies : 32 kHz, 44.1 kHz, 48 kHz
 - Supported Bit-rates : 32~256 (kbps), variable bit rates
- MPEG-4 files on CD-R[W]:
 - Simple profile
 - Advanced simple profile (640-480)
- DivX disc on CD-R[W]/DVD+R[W]:
 - DivX 3.11, 4.x and 5.x
 - GMC (Global Motion Compensation) and QP (Quarter Pixel) not supported.

TIPS: Some discs cannot be played on this DVD system due to the configuration and characteristics of the disc, or due to the condition of recording and authoring software that was used.

Disc Operations (continued)

Playing discs

- 1 Press **SOURCE** button until “**DISC**” appears on the display panel.
- 2 Turn on the TV power and set to the correct Video In channel. (See page 21 “Setting the TV”.)
→ You should see the blue DVD background screen on the TV.
- 3 Insert a disc into the disc slot.
→ Make sure the disc label is facing out.
For double-sided discs, load the side you want to play facing out.
→ When loading an 8cm disc, slot into the middle of the disc loader.



- 4 Playback will start automatically.
→ If a disc menu shows on the TV, see page 27 “Using the Disc Menu.”
→ If the disc is locked by parental control, you must enter your six-digit password. (see pages 39–40.)
- 5 To remove the disc, press **EJECT** (or hold down the ■ button on the remote.)

Auto Eco Power standby mode

This is a power-saving feature, the system will automatically switch to Eco Power standby mode if you do not press any buttons within 30 minutes after a disc has stopped playing.

TIPS: The operating features described here might not be possible for certain discs. Always refer to the instructions supplied with the discs.

Basic playback controls

Pausing playback

- During playback, press **▶II** (**PLAY PAUSE**.)
→ To resume normal playback, press the same button again.

Selecting another track/chapter

- Press **◀◀ / ▶▶** (**PREV / NEXT**) or use the **numeric keypad (0-9)** to key in a track/chapter number.
→ If repeat track mode is active, pressing **◀◀ / ▶▶** will replay the same track/chapter.

Searching backward/forward

- Press and hold **◀◀ / ▶▶** (**PREV / NEXT**.)
→ While searching, pressing **◀◀ / ▶▶** again will decrease/increase the search speed.
→ To resume normal playback, press **▶II** (**PLAY PAUSE**.)

Stopping playback

- Press **■** (**STOP**.)

Disc Operations (continued)

Selecting various repeat/shuffle functions

- While playing a disc, press **REPEAT** on the remote repeatedly to choose a repeat play mode.

DVD

- RPT ONE (repeat chapter)
- RPT TT (repeat title)
- SHUFFLE (random play)
- RPT SHF (repeat random play)
- RPT OFF (exit repeat mode)

VCD/SVCD/CD

- RPT ONE (repeat track)
- RPT ALL (repeat disc)
- SHUFFLE (random play)
- RPT SHF (repeat random play)
- RPT OFF (exit repeat mode)

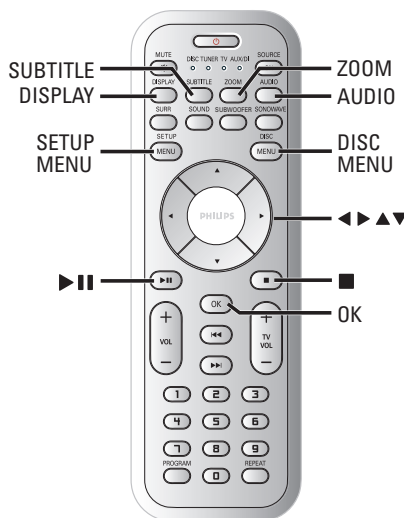
MP3/SACD/DivX

- RPT ONE (repeat track)
- RPT ALL/FLD (repeat folder)
- SHUFFLE (random play)
- RPT OFF (exit repeat mode)

Helpful Hint:

– VCDs do not allow repeat playback as long as the PBC mode is switched on.

Other operations for video playback (DVD/VCD/SVCD)



Using the Disc Menu

A menu may appear on the TV screen once you load in the disc, depending on the disc format.

To select a playback feature or item

- Use ◀▶ ▲▼ keys or **numeric keypad (0-9)** on the remote, then press **OK** to start playback.

To access or remove the menu

- Press **DISC MENU** on the remote.

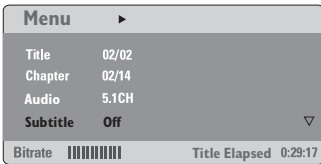
TIPS: The operating features described here might not be possible for certain discs. Always refer to the instructions supplied with the discs.

Disc Operations (continued)

Viewing playback information

It will show the disc playback information (for example, title or chapter number, elapsed playing time, audio/subtitle language,) a number of operations can be done without interrupting disc playback.

- 1 During playback, press **DISPLAY**.
→ A list of available disc information appears on the TV screen.



- 2 Use **▲▼** keys to view the information and press **OK** to access.
- 3 Use the **numeric keypad (0-9)** to input the number/time or use **▲▼** keys to make the selection, then press **OK** to confirm.
→ Playback will change to the chosen time or to the selected title/chapter/track.

Resuming playback from the last stopped point

This DVD system able to resume disc playback from its last stopped point (only possible for the last 10 discs that recorded without a menu.)

- 1 Load one of the last played 10 discs.
- 2 While "LOADING" appears on the display panel, press **▶II (PLAY PAUSE)** to start playback from the last stop point.

To cancel the resume mode

- In stop mode, press **■ (STOP)** again.

Zooming in

This function allows you to enlarge the picture on the TV screen and to pan through the enlarged picture.

- 1 During playback, press **ZOOM** repeatedly to select a different zoom factor.
→ Use **◀▶▲▼** keys to move through the zoomed image.
→ Playback will continue.
- 2 Press **ZOOM** repeatedly to return to the original size.

TIPS: The operating features described here might not be possible for certain discs. Always refer to the instructions supplied with the discs.

Disc Operations (continued)

Changing sound track language

This operation works only on DVDs with multiple soundtrack languages, you can change the language you want while playing a DVD.

- Press **AUDIO** repeatedly to select the available audio languages.

For VCD - changing the audio channel

- Press **AUDIO** repeatedly to select the available audio channels provided by the disc (STEREO, MONO LEFT, MONO RIGHT or MIX MONO.)

Changing subtitle language (DVD only)

This operation works only on DVDs with multiple subtitle languages, you can change the language you want while playing a DVD.

- Press **SUBTITLE** repeatedly to select different subtitle languages.

Playback Control (PBC) (VCD only)

PBC playback allows you to play Video CDs interactively, following the menu on the display. This function can also be accessed via the 'Preference Page' menu (see page 40.)

For VCDs with Playback Control (PBC) feature (version 2.0 only)

- When play is stopped, press **DISC MENU** to toggle between 'PBC ON' and 'PBC OFF'.
 - If you select 'PBC ON', the disc menu (if available) will appear on the TV. Use **▲ ▼** keys or numeric keypad (0-9) to select a play option and press **OK** to confirm.
 - If you select 'PBC OFF', the VCD will skip the index menu and playback directly from the beginning.

TIPS: The operating features described here might not be possible for certain discs. Always refer to the instructions supplied with the discs.

Disc Operations (continued)

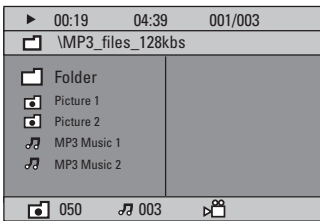
Playing an MP3/JPEG/MPEG-4 disc

This DVD system can playback MPEG-4, MP3, JPEG, VCD & SVCD files on a personally recorded CD-R/RW disc or commercial CD.

IMPORTANT!

You have to turn on your TV and set to the correct Video In channel. (See page 21 “Setting the TV”.)

- 1 Insert a disc.
→ The disc reading time may exceed 30 seconds due to the complexity of the directory/file configuration.
→ The disc menu appears on the TV screen.



- 2 If the disc main menu contains various folders, use ▲▼ keys to select a desired folder and press **OK** to open the folder.
- 3 Use ▲▼ keys to select a track/file and press **OK** to start playback.
→ Playback will start from the selected file and continue to the end of the folder.

During playback, you can;

- Press ◀◀ / ▶▶ to select another track/file in the current folder.
- Press and hold ◀◀ / ▶▶ to fast reverse/forward search a music track.
- To select another folder from the current disc, press ▲ to return to the root menu, then use ▲▼ keys to make your selection and press **OK** to confirm.

- Press **REPEAT** continuously to access various play mode.
- Press **▶II (PLAY PAUSE)** to interrupt playback and press the same button again to resume playback.

Playing MP3 music and JPEG picture simultaneously

- 1 Insert an MP3 disc that contains music and pictures.
→ The disc menu appears on the TV screen.
- 2 Select an MP3 track and press **▶II (PLAY PAUSE)** to start playback.
- 3 During MP3 music playback, use ◀▶▲▼ keys to select a picture folder from the disc menu and press **▶II (PLAY PAUSE.)**
→ The picture files will be played back until the end of the folder.
- 4 To quit simultaneous playback, press **DISC MENU** and followed by **■ (STOP.)**

Helpful Hints:

- It may not be possible to play certain MP3/JPEG/DivX/MPEG-4 disc due to the configuration and characteristics of the disc or condition of the recording.
- It is normal to experience an occasional “skip” while listening to your MP3 disc.
- It is normal to experience an occasional pixelation during MPEG-4/DivX playback due to poor clarity of digital contents during internet downloading.
- For multi-session discs with different formats, only the first session will be available.

TIPS: Some discs cannot be played on this DVD system due to the configuration and characteristics of the disc, or due to the condition of recording and authoring software that was used.

Disc Operations (continued)

Playing a picture disc (slide show)

IMPORTANT!

You have to turn on your TV and set to the correct Video In channel. (See page 21 "Setting the TV".)

- Insert a Picture disc (Kodak Picture CD, JPEG.)
 - For a Kodak disc, the slide show will begin automatically.
 - For a JPEG disc, the picture menu will appear on the TV screen. Press **▶||** (**PLAY PAUSE**) to start the slide-show playback.

Preview Function

This function shows the content of the current folder or the whole disc.

- 1 During playback, press **■** (**STOP**).
→ 12 thumbnail pictures will appear on the TV screen.



- 2 Press **◀◀** / **▶▶** to display the other pictures on the previous/next page.
- 3 Use **◀▶** **▲▼** keys to highlight one of the picture and press **OK** to start playback.
- 4 Press **DISC MENU** to return to Picture CD menu.

Zoom picture

- 1 During playback, press **ZOOM** repeatedly to select different zoom factor.
- 2 Use **◀▶** **▲▼** keys to move through the zoomed image.

Rotating/Flipping the picture

- During playback, use **◀▶** **▲▼** keys to rotate/flip the picture on the TV screen.
 - ▲ : flip the picture vertically
 - ▼ : flip the picture horizontally
 - ◀ : rotate the picture counter-clockwise
 - ▶ : rotate the picture clockwise

Supported JPEG picture formats

File format:

- The file extension has to be '*.JPG' and not '*.JPEG.'
- It can only display DCF-standard still pictures or JPEG pictures e.g. TIFF. It cannot play back moving pictures, Motion JPEG, progressive JPEG and other formats, or pictures in formats other than JPEG, or pictures associated with sound.
- It may require longer time for the DVD system to display the disc content on the TV due to the large number of songs/pictures compiled into one disc.

TIPS: Some discs cannot be played on this DVD system due to the configuration and characteristics of the disc, or due to the condition of recording and authoring software that was used.

Disc Operations (continued)

Playing a Super Audio CD (SACD)

There are three types of SACD discs : single layer, double layer or hybrid discs. The hybrid disc contains both Super Audio CD and standard audio CD layers, only the SACD layer can be played back on this DVD system.

- ① Insert a SACD.
→ The disc menu appears on the TV screen.
- ② Playback will start automatically.
→ If the SACD consists of multi-channel and stereo tracks, multi-channel tracks will have the priority for playback.
→ To playback stereo tracks, use ▲ ▼ keys to make your selection from the disc menu, then press ►II (PLAY PAUSE.)

Helpful Hint

– It is not possible to program SACD tracks.

Playing a DivX disc

This DVD system supports the playback of DivX movie which you download from your computer onto a CD-R/RW (see page 34 for more information.)

- ① Insert a DivX disc.
- ② If the DivX movie contains external subtitles, the subtitle menu will appear on the TV for your selection.
- In this case, pressing **SUBTITLE** on the remote will turn on or off the subtitle display.
- ③ Press ►II (PLAY PAUSE) to start playback.
- If multilingual subtitles are embedded on the DivX disc, you can press **SUBTITLE** to change the subtitle language while playing.

Helpful Hints:

- Subtitle files with the following filename extensions (.srt, .smi, .sub, .ssa, .ass) are supported but do not appear on the file navigation menu.
- The subtitle filename has to be the same as the filename of the movie.
- The subtitle can only be displayed up to maximum of 35 characters.

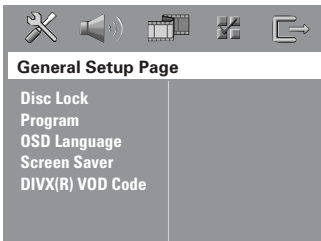
TIPS: Some discs cannot be played on this DVD system due to the configuration and characteristics of the disc, or due to the condition of recording and authoring software that was used.

DVD Setup Menu Options

This DVD system setup is carried out via the TV, enabling you to customize the DVD system to suit your particular requirements.

Accessing General Setup Page

- 1 In disc mode, press **SETUP MENU**.
- 2 Press **◀▶** to select 'General Setup Page.'
- 3 Press **OK** to confirm.



Locking/Unlocking the disc for viewing

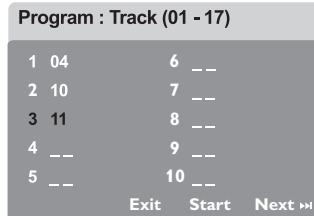
Not all discs are rated or coded by the disc maker. You can prevent a specific disc from playing by locking the disc. Up to 40 discs can be locked.

- 1 In 'General Setup Page,' use **▲▼** keys to highlight { **Disc Lock**, } then press **▶**.
{ **Lock** }
Select this to block the playback of the current disc. Subsequent access to a locked disc requires six-digit password. The default password is '136900' (see page 41 "Changing the password".)
{ **Unlock** }
Select this to unlock the disc and allow future playback.
- 2 Use **▲▼** keys to select a setting and press **OK** to confirm.

Programming disc tracks (not for Picture CD/MP3/SACD)

You can play the contents of the disc in the order you want by programming the playing order of the tracks. Up to 20 tracks can be stored.

- 1 Press **PROGRAM** on the remote.
OR
In 'General Setup Page,' use **▲▼** keys to highlight { **Program**, } then press **▶** to select { **Input Menu**. }
- 2 Press **OK** to confirm.



To program your favorite tracks/ chapter

- 3 Use the **numeric keypad (0-9)** to enter a valid track/chapter number.
- 4 Use **◀▶▲▼** keys to move the cursor to the next position.
→ If the total program tracks are more than ten, press **▶▶▶** to open the next page and proceed with programming or,
→ Use **◀▶▲▼** keys to highlight { **Next** } on the program menu, then press **OK**.
- 5 Repeat steps 3~4 to input another track/chapter number.

TIPS: The underlined option is the factory default setting.
To return to the previous menu, press **◀**. To remove the menu, press **SETUP MENU**.

DVD Setup Menu Options (continued)

If you want to remove a track

- 6 Use ◀▶▲▼ keys to move the cursor to the track you want to remove.
- 7 Press **OK** to remove this track from the program menu.

To start program playback

- 8 Use ◀▶▲▼ keys to highlight { **Start** } on the program menu, then press **OK**.
→ Playback will start with the selected tracks under the programmed sequence.

To exit program playback

- 9 Use ◀▶▲▼ keys to highlight { **Exit** } on the program menu, then press **OK**.

OSD Language

This menu contains various language options for the language displayed on the screen. For details, see page 24.

Screen Saver - turning on/off

The screen saver will help to prevent your TV display device from getting damaged.

- 1 In 'General Setup Page,' use ▲▼ keys to highlight { **Screen Saver,** } then press ▶.

{ **On** }
Select this if you wish to turn off the TV screen when play is stopped or paused for more than 15 minutes.

{ **Off** }
Select this to disable the screen saver function.
- 2 Use ▲▼ keys to select a setting and press **OK** to confirm.

DivX® VOD registration code

Philips provide you the DivX® VOD (Video On Demand) registration code that allows you to rent and purchase videos using the DivX® VOD service. For more information, visit us at www.divx.com/vod.

- 1 In 'General Setup Page,' use ▲▼ keys to highlight { **DIVX(R) VOD Code,** } then press ▶.
→ The registration code will appear.
- 2 Press **OK** to exit.
- 3 Use the registration code to purchase or rent the videos from DivX® VOD service at www.divx.com/vod. Follow the instructions and download the video from your computer onto a CD-R/RW for playback on this DVD system.

Helpful Hint:

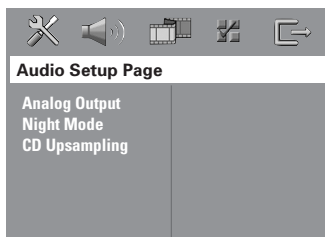
– All the downloaded videos from DivX® VOD can only be played back on this DVD system.

TIPS: The underlined option is the factory default setting.
To return to the previous menu, press ◀. To remove the menu, press **SETUP MENU**.

DVD Setup Menu Options (continued)

Accessing Audio Setup Page

- 1 In disc mode, press **SETUP MENU**.
- 2 Press ◀▶ to select 'Audio Setup Page.'
- 3 Press **OK** to confirm.



Setting the analog output

Set Analog Output to match your DVD home theater system's playback capability. This function can also be accessed via the **SURR.** button on the remote.

- 1 In 'Audio Setup Page,' press ▲▼ to highlight { **Analog Output,** } then press ▶.
{ Stereo }
Select this to change channel output to stereo that delivers sound from only the two front speakers and subwoofer.
{ Multi-channel }
Select this to enable Multi-channel output.
- 2 Use ▲▼ keys to select a setting and press **OK** to confirm.

Helpful Hint:

– This feature is not available for SACD playback.

Night Mode - turning on/off

When night mode is activated, the high volume outputs are softened and low volume outputs are brought upward to an audible level (for DVD only.) It is useful for watching action movies without disturbing others at night.

- 1 In 'Audio Setup Page,' use ▲▼ keys to highlight { **Night Mode,** } then press ▶.
{ On }
Select this to level out the volume.
{ Off }
Select this when you want to enjoy the surround sound with its full dynamic range.
- 2 Use ▲▼ keys to select a setting and press **OK** to confirm.

CD Upsampling

This feature allows you to convert your music CD to a higher sampling rate using sophisticated digital signal processing for better sound quality.

If you have activated the CD upsampling, the system will automatically switch to stereo mode.

- 1 In 'Audio Setup Page,' use ▲▼ keys to highlight { **CD Upsampling,** } then press ▶.
{ Off }
Select this to disable CD-upsampling.
{ 88.2 kHz (X2) }
Select this to convert the sampling rate of the CDs twice higher than the original.
- 2 Use ▲▼ keys to select a setting and press **OK** to confirm.

Helpful Hint:

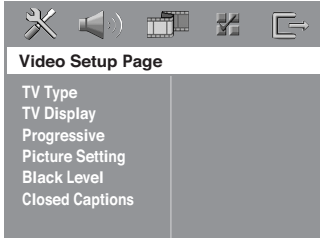
– If you press **SURR** button on the remote control to select "Multi-Channel" mode, it will disable the CD upsampling feature.

TIPS: The underlined option is the factory default setting.
To return to the previous menu, press ◀. To remove the menu, press **SETUP MENU**.

DVD Setup Menu Options (continued)

Accessing Video Setup Page

- 1 In disc mode, press **SETUP MENU**.
- 2 Press **◀▶** to select 'Video Setup Page.'
- 3 Press **OK** to confirm.



TV Type

This menu contains the options for selecting the color system that matches the connected TV. For details, see page 23.

TV Display

This menu contains the options for setting the aspect ratio of the DVD system according to the connected TV. For details, see page 23.

Progressive function - turning on/off

In the progressive scan mode, you can enjoy the high quality picture with less flickers. It only works when you have connected the DVD system's Y Pb Pr jacks to your TV that supports the progressive video input. Otherwise, the image may not appear or will be distorted. For proper progressive scan set up, see pages 21~22.

IMPORTANT!

Before enabling the progressive scan function, you must ensure :

- 1) Turn on your TV progressive scan function (refer to your TV owner's manual.)
- 2) You have connected the DVD system to your TV using Y Pb Pr (see page 14.)

- 1 In 'Video Setup Page,' use **▲▼** keys to highlight { **Progressive,** } then press **▶**.

{ **Off** }

Select this to disable progressive scan function.

{ **On** }

Select this to enable progressive scan function.

- 2 Use **▲▼** keys to select a setting and press **OK** to confirm.
→ Follow the instructions shown on the TV to confirm the selection (if any.)
→ If a blank/distorted TV screen appears, wait for 15 seconds for the auto recovery.

TIPS: The underlined option is the factory default setting.
To return to the previous menu, press **◀**. To remove the menu, press **SETUP MENU**.

DVD Setup Menu Options (continued)

Picture Setting

This DVD system provides three predefined sets of picture color settings and one personal setting which you can define yourself.

- 1 In 'Video Setup Page,' use ▲▼ keys to highlight { **Picture Setting**, } then press ►.

{ Standard }

Select this for original color setting.

{ **Bright** }

Select this for vibrant color setting.

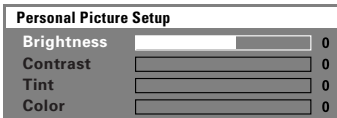
{ **Soft** }

Select this for warm color setting.

{ **Personal** }

Select this to personalize your picture color by adjusting the brightness, contrast, tint and color (saturation.)

- 2 Use ▲▼ keys to select a setting and press **OK** to confirm.
- 3 If you select { **Personal**, } then proceed to steps 4~7.
→ The 'Personal picture setup' menu appears.



- 4 Use ▲▼ keys to highlight one of the following options.

{ **Brightness** }

Increase this value to brighten the picture color or vice versa. Choose zero (0) for the average setting.

{ **Contrast** }

Increase this value to sharpen the picture color or vice versa. Choose zero (0) to balance the contrast.

{ **Tint** }

Increase or decrease this value to change the color phase of the picture. Choose zero (0) for the average setting.

{ **Color** }

Increase this value to enhance the picture color or vice versa. Choose zero (0) to balance the color.

- 5 Press ◀▶ to adjust the setting that best suit your personal preference.
- 6 Repeat steps 4~5 to adjust other settings.
- 7 Press **OK** to confirm.

TIPS: The underlined option is the factory default setting.
To return to the previous menu, press ◀. To remove the menu, press **SETUP MENU**.

DVD Setup Menu Options (continued)

Black Level - turning on/off

This feature is only applicable if you have set the 'TV TYPE' to 'NTSC' setting (see page 23.) Turn on this feature will help to improve the picture quality.

- 1 In 'Video Setup Page,' use ▲▼ keys to highlight { **Black Level** }, then press ►.
 - { On }
 - Select this to improve the color contrast and brighten the picture of NTSC discs
 - { **Off** }
 - Select this to deactivate the feature.
- 2 Use ▲▼ keys to select a setting and press **OK** to confirm.

Closed Captions - turning on/off

Closed captions are data that is hidden in the video signal on specific discs, invisible without a special decoder. It shows sound effects such as "phone ringing" and "footsteps." Before you select this function, ensure that the disc contains closed captions information and your TV also has this function.

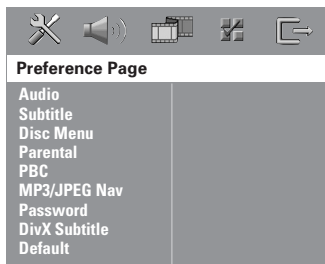
- 1 In 'Video Setup Page,' use ▲▼ keys to highlight { **Closed Captions** }, then press ►.
 - { On }
 - Select this to activate the closed captions feature.
 - { **Off** }
 - Select this deactivate the feature.
- 2 Use ▲▼ keys to select a setting and press **OK** to confirm.

TIPS: The underlined option is the factory default setting.
To return to the previous menu, press ◀. To remove the menu, press **SETUP MENU**.

DVD Setup Menu Options (continued)

Accessing Preference Setup Page

- 1 Press **■** twice to stop playback (if any) then press **SETUP MENU**.
- 2 Press **◀▶** to select the 'Preference Page.'
- 3 Press **OK** to confirm.



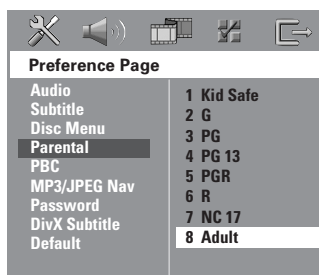
Audio, Subtitle, Disc Menu

These menus contain various language options for audio, subtitle and disc menu that may be recorded on the DVD. For details, see page 24.

Restricting playback by Parental Control

Some DVDs may have a parental level assigned to the complete disc or to certain scenes on the disc. This feature lets you set a playback limitation level. The rating levels are from 1 to 8 and are country dependent. You can prohibit the playback of certain discs that are not suitable for your children, or have certain discs played with alternative scenes.

- 1 In 'Preference Page,' use **▲▼** keys to highlight { **Parental**, } then press **▶**.



- 2 Use **▲▼** keys to highlight a rating level for the disc inserted and press **OK**.
- 3 Use the **numeric keypad (0-9)** to enter the six-digit password (see page 41 "Changing the password".)
→ DVDs that are rated above the level you selected will not play unless you enter your six-digit password.

TIPS: The underlined option is the factory default setting.
To return to the previous menu, press **◀**. To remove the menu, press **SETUP MENU**.

DVD Setup Menu Options (continued)

Rating explanations

1 KID SAFE – 2 G

– General Audience; recommended as acceptable for viewers of all ages.

3 PG

– Parental Guidance suggested.

4 PG13

– Material is unsuitable for children under the age of 13.

5 PGR – 6 R

– Parental Guidance - Restricted; recommended that parents restrict children under the age of 17 from viewing or allow them to view only when supervised by a parent or adult guardian.

7 NC-17

– No children under the age of 17; not recommended viewing for children under the age of 17.

8 ADULT

– Mature material; should be viewed only by adults due to graphic sexual material, violence or language.

Helpful Hints:

– VCD, SVCD, CD have no level indication, so parental control has no effect on these type of discs. This also applies to most illegal DVDs.

– Some DVDs are not encoded with a rating though the movie rating may be printed on the Disc cover. The rating level feature does not prohibit playback of such Discs.

PBC (Playback Control)

PBC (Playback Control) allows you to play Video CDs interactively, following the menu on the display. This feature is available only on Video CD 2.0 with playback control (PBC) feature.

- 1 In 'Preference Page,' use ▲▼ keys to highlight { **PBC**, } then press ►.

{ **On** }

Select this if you wish to display the index menu once you load in the VCD.

{ **Off** }

Select this to skip the index menu and start playback directly.

- 2 Use ▲▼ keys to select a setting and press **OK** to confirm.

MP3/JPEG Menu - turning on/off

MP3/JPEG Navigator can be set only if the disc is recorded with a menu. It allows you to select different display menus for easy navigation.

- 1 In 'Preference Page,' use ▲▼ keys to highlight { **MP3/JPEG Nav**, } then press ►.

{ **Without Menu** }

Select this to display all the files contained in the MP3/Picture CD.

{ **With Menu** }

Select this to display only the folder menu of the MP3/Picture CD.

- 2 Use ▲▼ keys to select a setting and press **OK** to confirm.

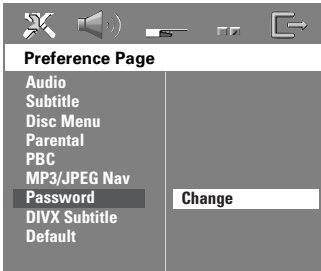
TIPS: The underlined option is the factory default setting.
To return to the previous menu, press ◀. To remove the menu, press **SETUP MENU**.

DVD Setup Menu Options (continued)

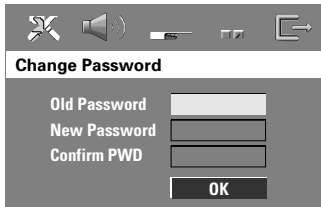
Changing the Password

The same password is used for both Parental Control and Disc Lock. Enter your six-digit password to play a prohibited disc or if prompted for a password. The default password is 136900.

- 1 In 'Preference Page,' use ▲▼ keys to highlight { **Password**, } then press ► to select { **Change**. }



- 2 Press **OK** to enter the 'Password Change Page.'



- 3 Use the **numeric keypad (0-9)** to enter your old six-digit password.
→ When doing this for the first time, key in '136900.'
→ If you forget your old six-digit password, key in '136900.'
- 4 Enter the new six-digit password.
- 5 Enter the new six-digit password a second time to confirm.
→ The new six-digit password will now take effect.
- 6 Press **OK** to confirm.

Setting the DivX Subtitle font

You can set the font type that supports the recorded DivX subtitle.

- 1 In 'Preference Page,' use ▲▼ keys to highlight { **DIVX Subtitle**, } then press ►.

{ **Standard** }

Select this to display a standard list of Roman subtitle fonts provided by this DVD system.

{ **Others** }

Select this to display other subtitle fonts.

- 2 Use ▲▼ keys to select a setting and press **OK** to confirm.

Restoring to original settings

You can reset all the system menu options and your personal settings to the factory defaults, except your password for Parental Control and Disc Lock.

- 1 In 'Preference Page,' use ▲▼ keys to highlight { **Default**, } then press ► to select { **Reset**. }
- 2 Press **OK** to confirm.
→ All settings will now reset to factory defaults.

TIPS: The underlined option is the factory default setting.
To return to the previous menu, press ◀. To remove the menu, press **SETUP MENU**.

Tuner Operations

Tuning to radio stations

- 1 Press **SOURCE** button until "TUNER FM" appears on the display panel.
- 2 Press ▲ / ▼ briefly on the remote.
→ The display panel will show "SEARCH" until a radio station with sufficient signal strength is found.
- 3 Repeat step 2 if necessary until you find the desired radio station.
- 4 To tune to a weak station, press ◀◀◀ / ▶▶▶ briefly and repeatedly until an optimal reception is found.
- If the FM station reception is weak, press **AUDIO** to switch the FM mode from stereo to mono.

Presetting radio stations

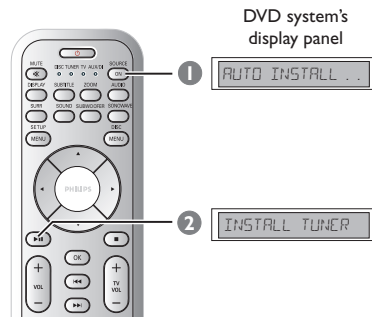
You can store up to 40 FM preset radio stations in the memory.

Helpful Hints:

- The system will exit presetting mode if no button is pressed within 20 seconds.
- If no valid frequency is detected during Plug and Play, "CHECK ANTENNA" appears.

Using the Plug and Play

Plug and Play allows you to store all available radio stations automatically.

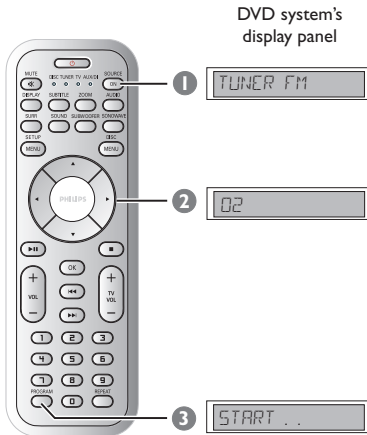


- 1 For first time setup, press **SOURCE** to select TUNER mode.
→ "AUTO INSTALL PRESS PLAY" appears.
- 2 Press and hold ►II (PLAY PAUSE) until "INSTALL TUNER" appears on the display panel.
→ All the available radio stations with strong signal strength will be stored automatically.
→ Once complete, the last tuned radio station will play.

Tuner Operations (continued)

Automatic presetting

Use automatic presetting to store or reinstall all the preset radio stations.



- 1 Press **SOURCE** button until "TUNER FM" appears on the display panel.
- 2 Press ◀ ▶ or use the **numeric keypad (0-9)** to select a preset number to begin.
- 3 Press and hold **PROGRAM** until "AUTO" appears.
→ If a radio station is stored in one of the earlier presets, the same radio station will not store under another preset number.
→ If no preset number is selected, automatic preset will begin from preset (1) and all your former presets will be overridden.

Manual presetting

Use manual presetting to store only your favorite radio stations.

- 1 Tune to your desired radio station (see "Tuning to radio stations").
- 2 Press **PROGRAM**.
- 3 Use ◀ ▶ keys to select a preset number that you want to store the current radio station.
- 4 Press **PROGRAM** again to store.

Selecting a preset radio station

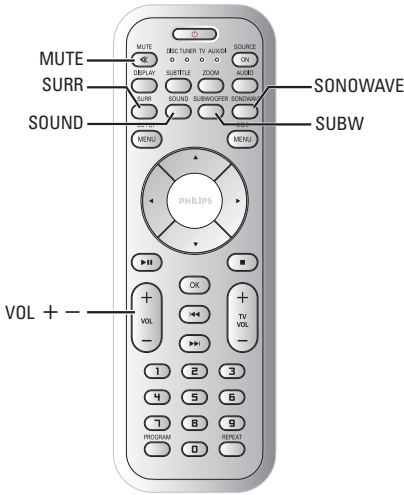
- Use ◀ ▶ keys to select a preset number (or use the numeric keypad on the remote.)
→ The preset number followed by radio frequency will appear.

Deleting a preset radio station

- 1 In tuner mode, use ◀ ▶ keys on the remote to select a preset radio station.
- 2 Press and hold **■** until "PRESET DELETED" appears.
→ The radio station continues to play but has been deleted from the preset list.

Sound and Volume Controls

English



Speakers (SonoWave speakers) adjustment

You can adjust the SonoWave speakers setting according to your room environment and setup for optimum performance.

IMPORTANT!

The SonoWave speakers must be placed at equal distance from the TV.

- 1 Press **SONOWAVE** on the remote.
→ There are three parameters to adjust the SonoWave speakers : "ROOM ACOUSTICS", "SPEAKER DISTANCE" and "LISTENING POSITION".
- 2 Use ▲ ▼ keys to select one of the options and press **OK** to adjust the setting.

{ ROOM ACOUSTICS }

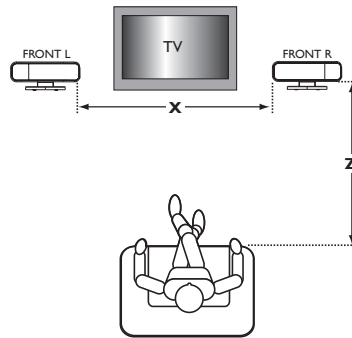
- Use ▲ ▼ keys to select the condition of the room and press **OK** to confirm.
→ "HARD" for concrete/glass walls.
→ "SOFT" for wooden walls.

{ SPEAKER DISTANCE }

- Use ▲ ▼ keys to select the distance (refer to 'X' in the below diagram) between the two SonoWave speakers and press **OK** to confirm.
→ "NEAR" - 'X' is less than 1m (3' 5")
→ "DEFAULT" - 'X' is between 1m (3' 5") to 2.5m (7' 62")
→ "FAR" - 'X' is more than 2.5m (7' 7")

{ LISTENING POSITION }

- Use ▲ ▼ keys to select the distance (refer to 'Z' in the below diagram) from the listening position and press **OK** to confirm.
→ "NEAR" - 'Z' is less than 1.5m (4' 7")
→ "DEFAULT" - 'Z' is between 1.5m (4' 7") to 2.5m (7' 7")
→ "FAR" - 'Z' is more than 2.5m (7' 7")



- 3 Press **SONOWAVE** again to exit the setting or it will exit automatically if you do not press any buttons within 10 seconds.

Sound and Volume Controls (continued)

AV subwoofer adjustment

You can adjust the AV subwoofer output level to enhance the bass output.

- 1 Start playing a music disc that has lots of mid-bass sounds, then press **SUBWOOFER** on the remote.
- 2 Press **VOL + / -** to select the desired bass level.
→ If the volume control is not used within five seconds, it will resume its normal volume control function.

Selecting surround sound

- Press **SURR (SURROUND)** to select : **MULTI-CHANNEL** or **STEREO**.
→ The availability of the various surround sound modes depends on the sound available on the disc.
→ The available output modes for Multi-channel include: Dolby Digital, DTS (Digital Theater Systems) Surround and Dolby Pro Logic II.
→ Stereo broadcasts or recordings will produce some surround channel effects when played in a surround mode. However, mono (single channel sound) sources will not produce any sound from the surround speakers.

Helpful Hint:

– You are not able to select the surround sound mode if the system setup menu is turned on.

Selecting digital sound effects

Select a preset digital sound effects that matches your disc's content or that optimizes the sound of the musical style you are playing.

- Press **SOUND** to select the available sound effect.

When playing movie discs or in TV mode, you can select :

CONCERT, DRAMA, ACTION or **SCI-FI**.

When playing music discs or while in **TUNER** or **AUX/DI** mode, you can select : **ROCK, DIGITAL, CLASSIC** or **JAZZ**.

Helpful Hint:

– For flat sound output, select **CONCERT** or **CLASSIC**.

Volume control

- Adjust **VOLUME** control (or press **VOL + / -** on the remote) to increase or decrease the volume level.
→ "**VOL MIN**" is the minimum volume level and "**VOL MAX**" is the maximum volume level.

To turn off the volume temporarily

- Press **MUTE** on the remote.
→ Playback will continue without sound and "**MUTE**" appears.
→ To restore the volume, press **MUTE** again, or increase the volume level.

Other Functions

Setting the Sleep timer

The sleep timer enables the system to switch to Eco Power standby mode automatically at a preset time.

- 1 Press and hold **OK** on the remote until "SLEEP XX" appear on the display panel (XX = 15, 30, 45, 60 or OFF)
- 2 To select the next sleep timer value, press **OK** button again while in sleep timer mode until it reaches the desired preset turn-off time.
 - 'SLEEP' will be showed on the display panel, except if "OFF" is selected.
 - Before the system switches to Eco Power standby mode, a countdown of 10 seconds is displayed.

"SLEEP 10" → "SLEEP 9"... →
"SLEEP 1" → "SLEEP"

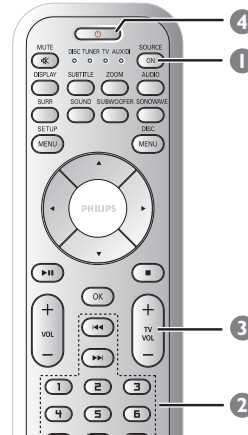
To cancel the sleep timer

- Press and hold **OK** until "OFF" appears or press the **STANDBY ON** (⏻) button.

Dimming system's display screen

- In any active mode, press and hold **DISPLAY** on the remote to select the desired brightness :
 - DIM 1 : 70% brightness
 - DIM 2 : 50% brightness
 - DIM 3 : 25% brightness
 - DIM OFF : normal brightness

Using the remote to operate your 'Philips' television



- 1 Press **SOURCE** button until "TV" appears on the display panel.
- 2 Press **◀◀/▶▶** or use the **numeric keypad (0-9)** to select the TV's channel.
- 3 Press **TVVOL +/-** to adjust the TV's volume level.
- 4 Press and hold **⏻** to turn off your TV.

Specifications

AMPLIFIER SECTION

Output power	550 W RMS
Frequency Response	20 Hz – 6 kHz / –3 dB
Signal-to-Noise Ratio	> 65 dB (CCIR)
Input Sensitivity	
- AUX In	1000 mV
- DIGITAL In	1 Vpp

TUNER SECTION

Tuning Range	FM 87.5 – 108 MHz (100 kHz)
26 dB Quieting Sensitivity	FM 20 dB
Image Rejection Ratio	FM 25 dB
IF Rejection Ratio	FM 60 dB
Signal-to-Noise Ratio	FM 60 dB
AM Suppression Ratio	FM 30 dB
Harmonic Distortion	FM Mono 3% FM Stereo 3%
Frequency Response	FM 180 Hz – 10 kHz / ±6 dB
Stereo Separation	FM 26 dB (1 kHz)
Stereo Threshold	FM 23.5 dB

DISC SECTION

Laser Type	Semiconductor
Disc Diameter	12cm / 8cm
Video Decoding	MPEG-1 / MPEG-2 / MPEG-4 / DivX 3.11, 4.x & 5.x
Video DAC	12 Bits / 108 MHz
Signal System	PAL / NTSC
Video Format	4:3 / 16:9
Video S/N	56 dB (minimum)
Composite Video Output	1.0 Vp-p, 75 Ω
Audio DAC	24 Bits / 96 kHz
Frequency Response	4 Hz – 20 kHz (44.1 kHz) 4 Hz – 22 kHz (48 kHz) 4 Hz – 44 kHz (96 kHz)
PCM	IEC 60958
Dolby Digital	IEC 60958, IEC 61937
DTS	IEC 60958, IEC 61937
SACD D/A converter	PCM
SACD cut-off frequency	50 kHz

MAIN UNIT

Power Supply Rating	110 – 240 V; 50 – 60 Hz
Power Consumption	13 W
Dimensions (w x h x d)	251 mm x 277 mm x 134 mm
Weight	2.8 kg

SONOWAVE SPEAKERS

System	2-way, closed box system
Impedance	6 Ω
Speaker drivers	3 x 76mm (3") woofer + 3 x 18mm (1 3/4") dome tweeter
Frequency response	120 Hz – 20 kHz
Dimensions (w x h x d)	350 mm x 140 mm x 134 mm
Weight	1.15 kg/each

AV SUBWOOFER

Power Supply Rating	110 – 240 V; 50 – 60 Hz
Power Consumption	110 W
Output Power	110 W RMS
System	Bass Reflex System
Impedance	3 Ω
Speaker drivers	165mm (6.5") woofer
Frequency response	30 Hz – 120 Hz
Dimensions (w x h x d)	600 mm x 411 mm x 216 mm
Weight	9 kg

JUNCTION BOX

Dimensions (w x h x d)	182 mm x 35 mm x 62 mm
Weight	0.27 kg

Specifications subject to change without prior notice

Troubleshooting

WARNING

Under no circumstances should you try to repair the system yourself, as this will invalidate the warranty. Do not open the system as there is a risk of electric shock.

If a fault occurs, first check the points listed below before taking the system for repair. If you are unable to remedy a problem by following these hints, consult your dealer or Philips for help.

Problem	Solution
No power.	<ul style="list-style-type: none">– Check if the AC power cord is properly connected.– Press the STANDBY ON on the front of the DVD system to turn on the power.
No picture.	<ul style="list-style-type: none">– Refer to your TV's manual for correct Video In channel selection. Change the TV channel until you see the DVD screen.– Press SOURCE to select disc mode.– If the progressive scan feature is activated but the connected TV does not support progressive signals or the cables are not connected accordingly, see pages 21~22 for proper progressive scan set up or deactivate the progressive scan feature as below:<ol style="list-style-type: none">1) Turn off your TV progressive scan mode or turn on to interlaced mode.2) Press EJECT on the main DVD system.3) Press ◀ on the remote control.4) Press SUBTITLE on the remote control.
Completely distorted picture or black/white picture.	<ul style="list-style-type: none">– If this happens when you are changing the setting of the 'TV TYPE', wait for 15 seconds for the auto recovery.– If this happens when you are turning on the progressive scan feature, wait for 15 seconds for the auto recovery.– Check the video connection.– Sometimes a small amount of picture distortion may appear. This is not a malfunction.– Clean the disc.
The aspect ratio of the screen cannot be changed even though you have set the TV display.	<ul style="list-style-type: none">– The aspect ratio is fixed on the DVD disc.– Depending on the TV, it may not be possible to change the aspect ratio.
No sound or distorted sound.	<ul style="list-style-type: none">– Adjust the volume.– Check the speaker connections and settings.– Make sure that the audio cables are connected and press the SOURCE button to select the correct input source (TV or AUX/DI, for example) to choose the equipment that you want to hear through the DVD system.
Cannot activate some features such as Angles, Subtitles, or multi-language Audio.	<ul style="list-style-type: none">– The features may not be available on the DVD.– Changing the language for the sound or subtitle is prohibited on this DVD.

Troubleshooting (continued)

Problem	Solution
Not able to select some Items in the setup/system menu.	<ul style="list-style-type: none">– Press STOP button twice before selecting the setup/system menu.– Depending on the disc availability, some menu items cannot be selected.
The DVD system does not start playback.	<ul style="list-style-type: none">– Insert a readable disc with the playback side facing down. The DVD+R/CD-R must be finalized.– Check the disc type, color system (PAL or NTSC) and region code.– Check for any scratches or smudges on the disc.– Press SETUP MENU to turn off the setup menu screen.– You may need to enter the password in order to change the parental control rating level or to unlock the disc for playback.– Moisture may have condensed inside the system. Remove the disc and leave the system turned on for about an hour.
No surround sound effect from the SonoWave speakers.	<ul style="list-style-type: none">– Press SURR button to select a correct surround sound setting.– Make sure the source you are playing is recorded or broadcast in surround sound (DTS, Dolby Digital, etc.)
Radio reception is poor.	<ul style="list-style-type: none">– If the signal is too weak, adjust the antenna or connect an external antenna for better reception.– Increase the distance between the system and your TV or VCR.– Tune in to the correct frequency.– Place the antenna further away from any equipment that may be causing the interference.
The remote control does not function properly.	<ul style="list-style-type: none">– Select the source (DISC or TUNER, for example) before pressing the function button (▶, ◀, ◀◀, ▶▶, !).– Reduce the distance between the remote control and the system.– Replace the batteries with new ones.– Point the remote control directly toward the IR sensor.– Check that the batteries are loaded correctly.
Unable to play DivX movies.	<ul style="list-style-type: none">– Check that the DivX file is encoded in 'Home Theater' mode with DivX 5.x encoder.
The DVD system does not work.	<ul style="list-style-type: none">– Disconnect the power cord from the power outlet for a few minutes. Reconnect the power cord and try to operate again as usual.
The disc in the disc slot cannot be ejected.	<ul style="list-style-type: none">– Hold down the STOP button on the remote, followed by pressing number button "2", "5" and "9".

Glossary

Analog: Sound that has not been turned into numbers. Analog sound varies, while digital sound has specific numerical values. These jacks send audio through two channels, the left and right.

Aspect ratio: The ratio of vertical and horizontal sizes of a displayed image. The horizontal vs. vertical ratio of conventional TVs is 4:3, and that of wide-screens is 16:9.

AUDIO OUT Jacks: Red and white jacks on the back of the DVD System that send audio to another system (TV, Stereo, etc..)

Bit Rate: The amount of data used to hold a given length of music; measured in kilobits per second, or kbps. Or, the speed at which you record. Generally, the higher the bit rate, or the higher the recording speed, the better the sound quality. However, higher bit rates use more space on a Disc.

Chapter: Sections of a picture or a music piece on a DVD that are smaller than titles. A title is composed of several chapters. Each chapter is assigned a chapter number enabling you to locate the chapter you want.

Component Video Out Jacks: Jacks on the back of the DVD System that send high-quality video to a TV that has Component Video In jacks (R/G/B, Y/Pb/Pr, etc.)

Disc menu: A screen display prepared for allowing selection of images, sounds, subtitles, multi-angles, etc recorded on a DVD.

DivX 3.11/4.x/5.x: The DivX code is a patent-pending, MPEG-4 based video compression technology, developed by DivXNetworks, Inc., that can shrink digital video to sizes small enough to be transported over the internet, while maintaining high visual quality.

Dolby Digital: A surround sound system developed by Dolby Laboratories containing up to six channels of digital audio (front left and right, surround left and right, center and subwoofer.)

Dolby Surround Pro Logic II: It is an improved matrix decoding technology that provides better spatiality and directionality on Dolby Surround program material; provides a convincing three-dimensional soundfield on conventional stereo music recordings; and is ideally suited to bring the surround experience to automotive sound. While conventional surround programming is fully compatible with Dolby Surround Pro Logic II decoders, soundtracks will be able to be encoded specifically to take full advantage of Pro Logic II playback, including separate left and right surround channels. (Such material also compatible with conventional Pro Logic decoders.)

DTS: Digital Theater Systems. This is a surround sound system, but it is different from Dolby Digital. The formats were developed by different companies.

JPEG: A very common digital still picture format. A still-picture data compression system proposed by the Joint Photographic Expert Group, which features small decrease in image quality in spite of its high compression ratio.

MP3: A file format with a sound data compression system. "MP3" is the abbreviation of Motion Picture Experts Group 1 (or MPEG-1) Audio Layer 3. By using the MP3 format. One CD-R or CD-RW can contain about 10 times more data than a regular CD.

Multichannel: DVDs are formatted to have each sound track constitute one sound field. Multichannel refers to a structure of sound tracks having three or more channels.

Parental control: Limits Disc play according to the age of the users or the limitation level in each country. The limitation varies from disc to disc; when it is activated, playback will be prohibited if the software's level is higher than the user-set level.

Playback control (PBC): Refers to the signal recorded on video CDs or SVCDs for controlling playback. By using menu screens recorded on a Video CD or SVCD that supports PBC, you can enjoy interactive playback and searching.

Progressive Scan: It displays all the horizontal lines of a picture at one time, as a signal frame. This system can convert the interlaced video from DVD into progressive format for connection to a progressive display. It dramatically increases the vertical resolution.

Region code: A system allowing discs to be played only in the region designated. This unit will only play discs that have compatible region codes. You can find the region code of your unit by looking on the product label. Some discs are compatible with more than one region (or ALL regions.)

Super Audio CD (SACD): This audio format is based upon the current CD standards but includes a greater amount of information that provides higher quality sound. There are three types of discs: single layer, double layer and hybrid discs. The hybrid disc contains both standard audio CD and Super Audio CD information.

Surround: A system for creating realistic three-dimensional sound fields full of realism by arranging multiple speakers around the listener.

Title: The longest section of a movie or music feature on DVD. Each title is assigned a title number, enabling you to locate the title you want.

VIDEO OUT jack: Yellow jack on the back of the DVD system that sends the DVD picture video to a TV.

PHILIPS LIMITED WARRANTY

One (1) Year Labor and Parts Repair

PHILIPS CONSUMER ELECTRONICS warrants this product against defect in material or workmanship, subject to any conditions set forth as follows:

PROOF OF PURCHASE:

You must have proof of the date of purchase to receive warranted repair on the product. A sales receipt or other document showing the product and the date that you purchased the product as well as the authorized retailer included, is considered such proof.

COVERAGE:

(If this product is determined to be defective)

LABOR: For a period of one (1) year from the date of purchase, Philips will repair or replace the product, at its option, at no charge, or pay the labor charges to any Philips authorized repair facility. After the period of one (1) year, Philips will no longer be responsible for charges incurred.

PARTS: For a period of one (1) year from the date of purchase, Philips will supply, at no charge, new or rebuilt replacement parts in exchange for defective parts, through a Philips authorized service center.

Note: If Philips is unable to provide service in your area, receipt of the paid service can be submitted for consideration of adjustment or full reimbursement at Philips discretion.

EXCLUDED FROM WARRANTY COVERAGE

Your warranty does not cover:

- Labor charges for installation or setup of the product, adjustment of customer controls on the product, and installation or repair of antenna systems outside of the product.
- Product repair and/or part replacement because of improper installation, connections to improper voltage supply, abuse, neglect, misuse, accident, unauthorized repair or other cause not within the control of Philips.
- A product that requires modification or adaptation to enable it to operate in any country other than the country for which it was designed, manufactured, approved and/or authorized, or repair of products damaged by these modifications.
- Damage occurring to product during shipping when improperly packaged or cost associated with packaging.
- Product lost in shipment and no signature verification of receipt can be provided.
- A product used for commercial or institutional purposes (including but not limited to rental purposes).
- Products sold AS IS or RENEWED.

CARRY-IN / SHIP-IN WARRANTY

For Carry-In warranty repair, take the product to a Philips authorized service center for repair. When the product has been repaired, you must pick up the unit at the center. For Ship-In warranty repair, ship the product to a Philips authorized service center for repair in its original carton and packing material. If you do not have the original carton or packing material, have your product professionally packed for shipping. Ship product via a traceable carrier. When it is necessary for you to ship the product to Philips for repair, you will pay the shipping cost for shipment to Philips. Philips will pay the shipping costs when returning the product to you.

TO OBTAIN WARRANTY SERVICE IN THE U.S.A., PUERTO RICO, OR U.S. VIRGIN ISLANDS...

Contact Philips Customer Care Center at:
1-888-PHILIPS (1-888-744-5477)

TO OBTAIN WARRANTY SERVICE IN CANADA...

1-800-661-6162 (French Speaking)
1-888-PHILIPS (1-888-744-5477) - (English or Spanish Speaking)

REPAIR OR REPLACEMENT AS PROVIDED UNDER THIS WARRANTY IS THE EXCLUSIVE REMEDY FOR THE CONSUMER. PHILIPS SHALL NOT BE LIABLE FOR ANY INCIDENTAL OR CONSEQUENTIAL DAMAGES FOR BREACH OF ANY EXPRESS OR IMPLIED WARRANTY ON THIS PRODUCT. EXCEPT TO THE EXTENT PROHIBITED BY APPLICABLE LAW, ANY IMPLIED WARRANTY OF MERCHANTABILITY OR FITNESS FOR A PARTICULAR PURPOSE ON THIS PRODUCT IS LIMITED IN DURATION TO THE DURATION OF THIS WARRANTY.

Some states do not allow the exclusions or limitation of incidental or consequential damages, or allow limitations on how long an implied warranty lasts, so the above limitations or exclusions may not apply to you. In addition, if you enter into a service contract agreement with the PHILIPS partnership within ninety (90) days of the date of sale, the limitation on how long an implied warranty lasts does not apply.

This warranty gives you specific legal rights. You may have other rights which vary from state/province to state/province.

Philips, P.O. Box 671539, Marietta, GA. 30006-0026

(Warranty: 4835 710 27175)

