

Always there to help you

Register your product and get support at
www.philips.com/welcome



SPA8210



User manual

PHILIPS

Register online at www.philips.com/welcome today to
get the very most from your purchase.

Registering your model with PHILIPS makes you eligible for all of the valuable benefits listed below, so don't miss out. Register online at www.philips.com/welcome to ensure:

*Product Safety Notification

By registering your product, you'll receive notification - directly from the manufacturer.

*Additional Benefits

Registering your product guarantees that you'll receive all of the privileges to which you're entitled, including special money-saving offers.

PHILIPS

*Congratulations on your purchase,
and welcome to the "family!"*

Dear PHILIPS product owner:

Thank you for your confidence in PHILIPS. You've selected one of the best-built, best-backed products available today. We'll do everything in our power to keep you happy with your purchase for many years to come.

As a member of the PHILIPS "family," you're entitled to protection by one of the most comprehensive warranties in the industry. What's more, your purchase guarantees you'll receive all the information and special offers for which you qualify, plus easy access to accessories from our convenient home shopping network.

Most importantly, you can count on our uncompromising commitment to your total satisfaction.

All of this is our way of saying welcome - and thanks for investing in a PHILIPS product.

P.S. To get the most from your PHILIPS purchase, be sure to register online at:

www.philips.com/welcome

Know these
safety symbols



This "bolt of lightning" indicates unsulated material within your unit may cause an electrical shock. For the safety of everyone in your household, please do not remove product covering.

The "exclamation point" calls attention to features for which you should read the enclosed literature closely to prevent operating and maintenance problems.

WARNING: To reduce the risk of fire or electric shock, this apparatus should not be exposed to rain or moisture and objects filled with liquids, such as vases, should not be placed on this apparatus.

CAUTION: To prevent electric shock, match wide blade of plug to wide slot, fully insert.

ATTENTION: Pour éviter les choc électriques, introduire la lame la plus large de la fiche dans la borne correspondante de la prise et pousser jusqu'au fond.

For Customer Use

Enter below the Serial No. which is located on the rear of the cabinet. Retain this information for future reference.

Model No. _____

Serial No. _____

PHILIPS

Visit our World Wide Web Site at <http://www.philips.com/welcome>

Contents

| | | |
|----------|-------------------------------|----------|
| 1 | Safety | 2 |
| | Know these safety symbols | 2 |
| | Important safety instructions | 2 |
| | Hearing safety | 3 |

| | | |
|----------|---------------------|----------|
| 2 | Installation | 4 |
|----------|---------------------|----------|

| | | |
|----------|-----------------------------------|----------|
| 3 | Power on and adjust volume | 5 |
|----------|-----------------------------------|----------|

| | | |
|----------|-------------------------------------|----------|
| 4 | Other features | 6 |
| | Listen through an audio input cable | 6 |
| | Listen through an earphone | 6 |

| | | |
|----------|----------------------------|----------|
| 5 | Product information | 7 |
|----------|----------------------------|----------|

| | | |
|----------|------------------------------|----------|
| 6 | Notice | 8 |
| | Compliance | 8 |
| | Disposal of your old product | 8 |
| | Copyright | 9 |

1 Safety

Know these safety symbols



This 'bolt of lightning' indicates uninsulated material within your unit may cause an electric shock. For the safety of everyone in your household, please do not remove product covering.

The 'exclamation mark' calls attention to features for which you should read the enclosed literature closely to prevent operating and maintenance problems.

WARNING: To reduce the risk of fire or electric shock, this apparatus should not be exposed to rain or moisture and objects filled with liquids, such as vases, should not be placed on this apparatus.

CAUTION: To prevent electric shock, fully insert the plug. (For regions with polarized plugs: To prevent electric shock, match wide blade to wide slot.)

Important safety instructions

- ① Read these instructions.
- ② Keep these instructions.
- ③ Heed all warnings.
- ④ Follow all instructions.
- ⑤ Do not use this apparatus near water.
- ⑥ Clean only with dry cloth.
- ⑦ Do not block any ventilation openings. Install in accordance with the manufacturer's instructions.
- ⑧ Do not install near any heat sources such as radiators, heat registers, stoves, or other apparatus (including amplifiers) that produce heat.
- ⑨ Protect the power cord from being walked on or pinched, particularly at plugs, convenience receptacles, and the point where they exit from the apparatus.
- ⑩ Only use attachments/accessories specified by the manufacturer.
- ⑪ Unplug this apparatus during lightning storms or when unused for long periods of time.
- ⑫ Refer all servicing to qualified service personnel. Servicing is required when the apparatus has been damaged in any way, such as power-supply cord or plug is damaged, liquid has been spilled or objects have fallen into the apparatus, the apparatus has been exposed to rain or moisture, does not operate normally, or has been dropped.
- ⑬ Apparatus shall not be exposed to dripping or splashing.
- ⑭ Do not place any sources of danger on the apparatus (e.g. liquid filled objects, lighted candles).
- ⑮ This product may contain lead and mercury. Disposal of these materials may be regulated due to environmental considerations. For disposal or recycling information, please contact your local authorities or the Electronic Industries Alliance: www.eiae.org.
- ⑯ Where the plug of the Direct Plug-in Adapter is used as the disconnect device, the disconnect device shall remain readily operable.

Warning

- Never remove the casing of this apparatus.
- Never lubricate any part of this apparatus.
- Never place this apparatus on other electrical equipment.
- Keep this apparatus away from direct sunlight, naked flames or heat.
- Make sure that you always have easy access to the power cord, plug, or adaptor to disconnect the apparatus from the power.

Be sure to observe the following guidelines when using your headphones.

- Listen at reasonable volumes for reasonable periods of time.
- Be careful not to adjust the volume as your hearing adapts.
- Do not turn up the volume so high that you can't hear what's around you.
- You should use caution or temporarily discontinue use in potentially hazardous situations.

Hearing safety



Listen at a moderate volume.

- Using headphones at a high volume can impair your hearing. This product can produce sounds in decibel ranges that may cause hearing loss for a normal person, even for exposure less than a minute. The higher decibel ranges are offered for those that may have already experienced some hearing loss.
- Sound can be deceiving. Over time your hearing 'comfort level' adapts to higher volumes of sound. So after prolonged listening, what sounds 'normal' can actually be loud and harmful to your hearing. To guard against this, set your volume to a safe level before your hearing adapts and leave it there.

To establish a safe volume level:

- Set your volume control at a low setting.
- Slowly increase the sound until you can hear it comfortably and clearly, without distortion.

Listen for reasonable periods of time:

- Prolonged exposure to sound, even at normally 'safe' levels, can also cause hearing loss.
- Be sure to use your equipment reasonably and take appropriate breaks.

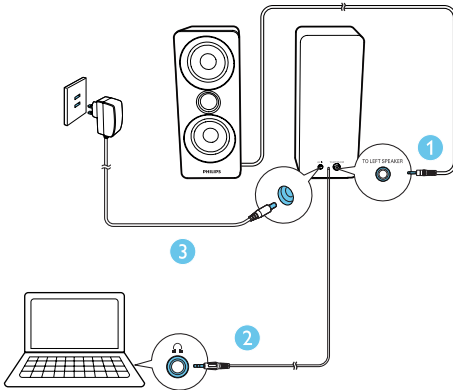
2 Installation

Note

- Make sure that the Multimedia Speakers are installed properly before using.
- If you place the Multimedia Speakers close to CRT display, you will see obvious color distortion.

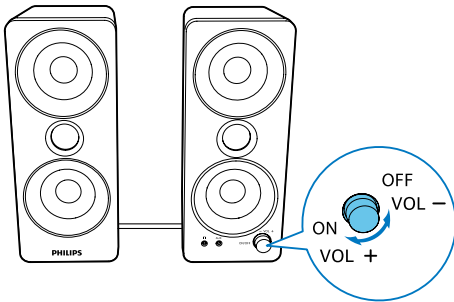
System Requirements:

| PC | Mac |
|---|--------------------------|
| Windows® 98SE, Windows® ME, Windows® 2000, Windows® XP, or Windows® Vista™, Windows 7 | Mac OS9/ OS® X, or later |



- 1 Connect the left speaker plug into the **TO LEFT SPEAKER** socket on the right speaker.
- 2 Connect the audio input plug to the audio output socket (usually the earphone socket) of your computer.
- 3 Connect the AC power adaptor between
 - the power socket at the back of the right speaker; and
 - the wall outlet.

3 Power on and adjust volume

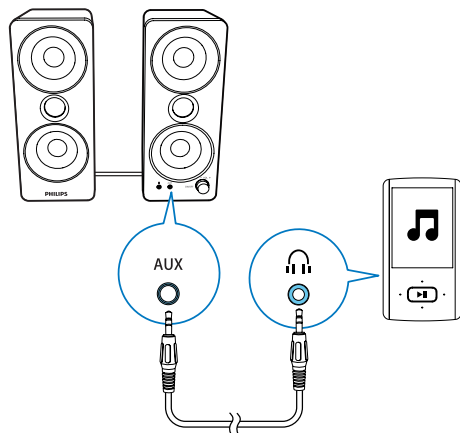


Turn the knob clockwise until you hear a click to power on the Multimedia Speakers.

- To adjust the volume, turn the knob clockwise or anti-clockwise. You can also adjust the volume by your computer application.
- To power off the speakers, turn the knob anti-clockwise until you hear a click.

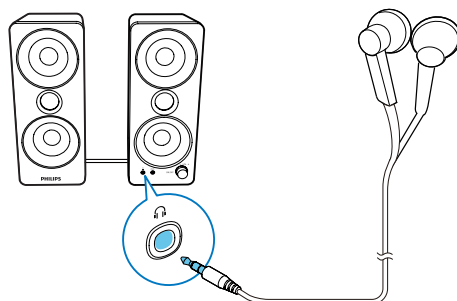
4 Other features


Listen through an audio input cable



- 1 Connect an audio input cable with a 3.5 mm connector on both ends between
 - the **AUX** socket on the right speaker;
 - and
 - the earphone socket on the external device, for example, an MP3 player.
- 2 Play music on the external device.

Listen through an earphone



Connect an earphone to the  socket on the right speaker.

5 Product information

Amplifier

| | |
|---------------------------|-----------------------|
| Rated Output Power | 2 X 20 W RMS |
| Frequency Response | 60 Hz - 16 kHz, -3 dB |
| Signal to Noise Ratio | > 50 dB |
| Total Harmonic Distortion | <2% |
| MP3 link | 600 mV |
| PC Input | 600 mV |
| AV Input | 2000 mV |

Speakers

| | |
|-------------------|-------------------------------------|
| Speaker Impedance | 8 ohm |
| Speaker Driver | L/R 3"x2, Tweeter 1"x2 WOOX 3"x2 |

General

| | |
|-----------------------------|---|
| AC power | Model: AS360-180-AA200 (Philips); Input: 100-240V ~, 50/60 Hz, 1.2 A; Output: 18V = 2 A |
| Operation Power Consumption | 20 W |
| Standby Power Consumption | < 0.5 W |
| Dimensions | |
| - Main Unit (W x H x D) | 100 x 250 x 116,5 mm |
| Weight | |
| - With Packing | 2.4 kg |
| - Main Unit | 2.0 kg |

6 Notice

Any changes or modifications made to this device that are not expressly approved by WOOX Innovations may void the user's authority to operate the equipment.

Compliance

This equipment has been tested and found to comply with the limits for a Class B digital device, pursuant to part 15 of the FCC Rules.

These limits are designed to provide reasonable protection against harmful interference in a residential installation. This equipment generates, uses, and can radiate radio frequency energy and, if not installed and used in accordance with the instruction manual, may cause harmful interference to radio communications.

However, there is no guarantee that interference will not occur in a particular installation. If this equipment does cause harmful interference to radio or television reception, which can be determined by turning the equipment off and on, the user is encouraged to try to correct the interference by one or more of the following measures:

- Relocate the receiving antenna.
- Increase the separation between equipment and receiver.
- Connect the equipment into an outlet on a circuit different from that to which the receiver is connected.
- Consult the dealer or an experienced radio/TV technician for help.

This digital apparatus does not exceed the Class B limits for radio noise emissions from digital apparatus as set out in the Radio Interference Regulations of the Canadian Department of Communications. This Class B digital apparatus complies with CAN ICES-3 (B)/NMB-3(B).

This device complies with Part 15 of the FCC Rules. Operation is subject to the following two conditions:

- This device may not cause harmful interference, and
- This device must accept any interference received, including interference that may cause undesired operation.

Disposal of your old product

Your product is designed and manufactured with high quality materials and components, which can be recycled and reused. Never dispose of your product with other household waste. Please inform yourself about the local rules on the separate collection of electrical and electronic products and batteries. The correct disposal of these products helps prevent potentially negative consequences on the environment and human health.

Please visit www.recycle.philips.com for additional information on a recycling center in your area.

Environmental information

All unnecessary packaging has been omitted. We have tried to make the packaging easy to separate into three materials: cardboard (box), polystyrene foam (buffer) and polyethylene (bags, protective foam sheet.)

Your system consists of materials which can be recycled and reused if disassembled by a specialized company. Please observe the local regulations regarding the disposal of packaging materials, exhausted batteries and old equipment.

Copyright

2014 © WOOX Innovations Limited. All rights reserved.

Philips and the Philips' Shield Emblem are registered trademarks of Koninklijke Philips N.V. and are used by WOOX Innovations Limited under license from Koninklijke Philips N.V.' Specifications are subject to change without notice. WOOX reserves the right to change products at any time without being obliged to adjust earlier supplies accordingly.



Note

- The type plate is located on the back panel of the right speaker.



P&F USA Inc.

PO Box 2248

Alpharetta, GA 30023-2248

Phone 1 866 309 0845

Meet Philips at the Internet

<http://www.philips.com/welcome>

2014 ©WOOX Innovations Limited.

All rights reserved.

This product was brought to the market by WOOX Innovations Limited or one of its affiliates, further referred to in this document as WOOX Innovations, and is the manufacturer of the product. P&F is the warrantor in relation to the product with which this booklet was packaged. Philips and the Philips Shield Emblem are registered trademarks of Koninklijke Philips N.V.

SPA8210_37_UM_V1.0

