

Philips
Multimedia Speakers 2.1



SPA6350

Powerful, rich sound

Unparalleled listening experience

40W output supported by SPD™ patented bass port technology gives deep, rounded tones with less distortion. The 2-way tweeter + woofer design produces both high and low to mid-range frequencies, maximizing output with a more balanced sound.

Rich, complex sound

- SPD™ innovative bass port technology for deep, rounded tones
- 2-way tweeter + woofer design
- Band pass subwoofer design for accurate bass reproduction
- Flared bass pipe emphasizes low tones for pure, strong bass
- 40W RMS output power
- Mylar material tweeter for high definition sound
- Well damped driver reduces vibration and sound distortion
- 3 integrated power amplifier circuits for balanced sound

Contemporary design

- Curvilinear cabinet for well-rounded sound
- Attractive high gloss finish

Simplicity

- Easy volume control on satellite
- Compatible with any media

PHILIPS
sense and simplicity

Highlights

SPD™ technology



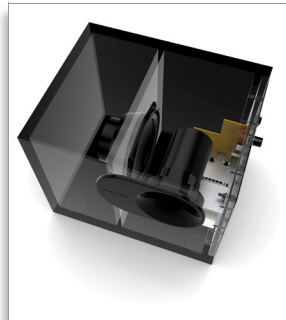
Philips Sound Purification Duct (SPD) bass port technology delivers the deep, pure tones of the original bass sound. Using an SPD foam material to process the inner surface of the bass pipe, the special acoustic damping invented by Philips reduces noise turbulence and stabilizes the tuning frequency. Philips technical and consumer tests confirm this buffer provides less colored, purer quality bass.

2-way speaker system



A dual-range speaker with two drivers produces high frequencies from the tweeter and low and mid-range frequencies from the woofer. This maximizes output with a more balanced sound than that from the commonly used one-way structure, where a single driver has to produce all the frequencies. So you can enjoy better acoustics with clear vocals and high tones along with solid bass, and all for a very competitive price with this latest Philips range of speakers.

Band pass subwoofer design



With its box-within-a-box design, this band pass subwoofer has two volume chambers to create more air capacity and deliver an altogether better bass sound with better balance and less distortion. The audio energy from the central driver is concentrated more effectively in the desired frequency output range, producing an overall sound image that is more focused and more accurately reproduced.

Flare bass pipe



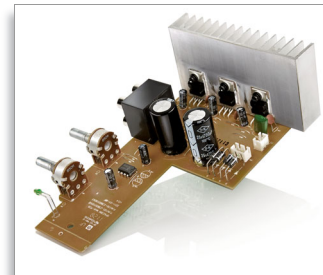
The bass pipe design is one of the key elements in this speaker cabinet. Its size, length, shape and flare area have the ultimate impact of opening the arc of low-frequency playback. Philips' flare design is relatively large with a bigger port, opening a large receive buffer so that sound waves flow more smoothly. Received air sound is smaller with less noise and distortion than you might find in other speakers. Philips understands the acoustics you want and this design dramatically reduces distortion, delivering a deeper, richer bass and allowing you to hear high frequency tones more clearly.

Mylar tweeter



The unique Mylar material used in the tweeters ensures incredible sound definition. The full range of high frequencies is perfectly reproduced, so music comes to life and movies sound like they were meant to. An integral part of the 2-way design, the tweeter improves high frequencies resulting in cleaner, more spacious and more accurate sound in tandem with the woofer. Improved clarity means you can identify all the different elements in the music. Listen to the individual instruments, hear the vocals more clearly, enjoy your music in refreshing detail.

Multiple integrated circuits



To keep the price down for most 2.1-channel multimedia speakers, the power amplifier circuit part is often overlooked, with a single power amplifier design becoming the focus. However, in this very sophisticated circuit design, Philips uses 3 integrated amplifier chips to drive the two satellite speakers and the subwoofer. The SPA4320 has a large built-in radiator, and the heat generated by the power amplifier circuit is dispersed by this heat sink. The UTC2030 amplifier chips provide a good solid foundation for quality sound and all the power needed to drive the subwoofer and satellites.

Specifications

Loudspeakers

- Loudspeaker Enhancement: Magnetic Shielded LSB
- Satellite speaker drivers: 2.75"
- Subwoofer driver: 5.25"
- Bass level control: On subwoofer

Sound

- Bass enhancement: SPD™
- Bass optimization
- Loudspeaker Enhancement: Magnetic Shielded LSB
- Music Power: 40 W
- Output power (RMS): Per satellite: 2x13 W ; Subwoofer: 14 W
- Frequency range: 50Hz – 20kHz (-10dB)

Power

- Power LED indicator: Red

Connectivity

- Audio input for data: Stereo Audio (3.5 mm jack) 1x
- Cable length: 1.5m
- Connector: 3.5 mm stereo

Packaging content

- Subwoofer
- Quick installation guide
- Remote Control: Wired
- 3.5 mm stereo line cable: Fixed
- Number of satellites: 2

Packaging dimensions

- Packaging dimensions (W x H x D): 46.5 x 25.8 x 25.1 cm
- EAN: 87 12581 62743 0
- Gross weight: 6.05 kg
- Nett weight: 5.054 kg
- Number of products included: 1
- Packaging type: Carton
- Tare weight: 0.996 kg
- Type of shelf placement: Laying

Outer Carton

- Gross weight: 13.145 kg
- Outer carton (L x W x H): 51.6 x 47.8 x 27.8 cm
- Nett weight: 10.108 kg
- Number of consumer packagings: 2
- Tare weight: 3.037 kg
- GTIN: 1 87 12581 62743 7

Dimensions

- Subwoofer: [W x D x H] 286 x 218 x 217 mm
- Satellite: [W x D x H] 189 x 94 x 133 mm (Right) ; 189 x 94 x 123 mm (Left)
- Control box: [W x D x H] 286 x 218 x 217 mm
- Amplify box: [W x D x H] 189 x 94 x 133 mm (Right) ; 189 x 94 x 123 mm (Left)
- Weight: 6.05 kg



Issue date 2012-02-25

Version: 1.1.3

12 NC: 8670 000 85359
EAN: 87 12581 62743 0

© 2012 Koninklijke Philips Electronics N.V.
All Rights reserved.

Specifications are subject to change without notice.
Trademarks are the property of Koninklijke Philips
Electronics N.V. or their respective owners.

www.philips.com