

Register your product and get support at

[www.philips.com/welcome](http://www.philips.com/welcome)

DS6200/37



# EN User manual

**PHILIPS**

# Contents

---

<b>1 Important</b>	3
Important Safety Instructions	3

---

<b>2 Your Docking Entertainment System</b>	4
Introduction	4
What's in the box	4
Overview of the speakers	5

---

<b>3 Get started</b>	5
Connect speakers	5
Connect power	6
Turn on	6

---

<b>4 Play</b>	7
Play from iPod/iPhone	7
Play from an external device	7

---

<b>5 Other features</b>	8
Synchronize the iPod/iPhone with a PC	8

---

<b>6 Product information</b>	8
Specifications	8

---

<b>7 Troubleshooting</b>	9
--------------------------	---

---

<b>8 Notice</b>	9
Disposal of your old product and batteries	10

# 1 Important

Know these safety symbols



This 'bolt of lightning' indicates uninsulated material within your unit may cause an electrical shock. For the safety of everyone in your household, please do not remove product covering.

The 'exclamation point' calls attention to features for which you should read the enclosed literature closely to prevent operating and maintenance problems.

**WARNING:** To reduce the risk of fire or electric shock, this apparatus should not be exposed to rain or moisture and objects filled with liquids, such as vases, should not be placed on this apparatus.

**CAUTION:** To prevent electric shock, match wide blade of plug to wide slot, fully insert.

---

## Important Safety Instructions

- ① Read these instructions.
- ② Keep these instructions.
- ③ Heed all warnings.
- ④ Follow all instructions.
- ⑤ Do not use this apparatus near water.
- ⑥ Clean only with dry cloth.
- ⑦ Do not block any ventilation openings. Install in accordance with the manufacturer's instructions.
- ⑧ Do not install near any heat sources such as radiators, heat registers, stoves, or other apparatus (including amplifiers) that produce heat.
- ⑨ Protect the power cord from being walked on or pinched, particularly at plugs, convenience receptacles, and the point where they exit from the apparatus.
- ⑩ Only use attachments/accessories specified by the manufacturer.
- ⑪ Use only with the cart, stand, tripod, bracket, or table specified by the manufacturer or sold with the apparatus. When a cart is used, use caution when moving the cart/apparatus combination to avoid injury from tip-over.



- ⑫ Unplug this apparatus during lightning storms or when unused for long periods of time.
- ⑬ Refer all servicing to qualified service personnel. Servicing is required when the apparatus has been damaged in any

way, such as power-supply cord or plug is damaged, liquid has been spilled or objects have fallen into the apparatus, the apparatus has been exposed to rain or moisture, does not operate normally, or has been dropped.

- ⑭ Apparatus shall not be exposed to dripping or splashing.
- ⑮ Do not place any sources of danger on the apparatus (e.g. liquid filled objects, lighted candles).
- ⑯ This product may contain lead and mercury. Disposal of these materials may be regulated due to environmental considerations. For disposal or recycling information, please contact your local authorities or the Electronic Industries Alliance: [www.eiae.org](http://www.eiae.org).
- ⑰ Where the plug of the Direct Plugin Adapter is used as the disconnect device, the disconnect device shall remain readily operable.

#### Note

- The type plate is located on the bottom of the apparatus.

## 2 Your Docking Entertainment System

Congratulations on your purchase, and welcome to Philips! To fully benefit from the support that Philips offers, register your product at [www.philips.com/welcome](http://www.philips.com/welcome).

If you contact Philips, you will be asked for the model and serial number of this apparatus. The model number and serial number are on the bottom of the apparatus. Write the numbers here:

Model No. \_\_\_\_\_

Serial No. \_\_\_\_\_

---

### Introduction

With this unit, you can:

- enjoy audio from the iPod/iPhone and other audio devices.
- synchronize your iPod/iPhone with PC.

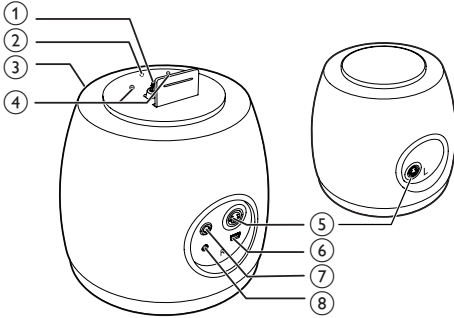
---


### What's in the box

Check and identify the contents of your package:

- Main unit (2 x speakers)
- 1 x speaker connection cable
- 1 x AC power adaptor
- 1 x USB cable
- 1 x MP3 link cable
- Quick start guide

## Overview of the speakers



- ① **DOCK**
  - Dock for iPod/iPhone.
- ② **⏻**
  - Access / exit the sync mode.
  - Hold to switch from standby mode to sync mode.
  - Press to switch from sync mode to standby mode.
- ③ **LED indicator**
  - Steadily on when the unit works in audio mode.
  - Flashes when the unit works in sync mode.
  - Turns off when the unit powered off or in standby mode.
- ④ **+/-**
  - Adjust volume.
- ⑤ **CABLE IN**
  - Connect the two speakers through the supplied speaker cable.
- ⑥ **USB** 
  - Connect a computer through the supplied USB cable.
- ⑦ **AUX-IN**
  - Socket for an external audio device.
- ⑧ **DC-IN**
  - Connect power.

## 3 Get started

### Caution

- Use of controls or adjustments or performance of procedures other than herein may result in hazardous radiation exposure or other unsafe operation.

Always follow the instructions in this chapter in sequence.

## Connect speakers

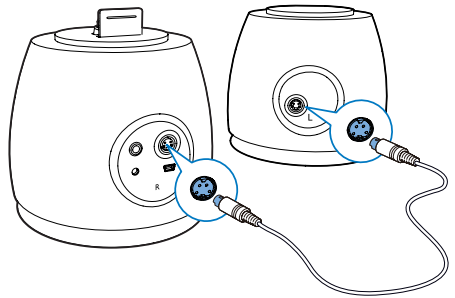
For optimal sound, use the supplied speakers only.

### Note

- The supplied DIN cable is only intended for use with this product. Never try to connect any other devices through this cable.

Connect the supplied DIN cable to the **CABLE IN** sockets on both speakers:

- active speaker (with buttons): right channel
- passive speaker: left channel

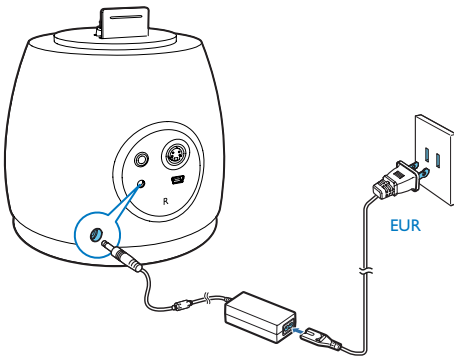


---

## Connect power

### ! Caution

- Risk of product damage! Ensure that the power supply voltage corresponds to the voltage printed on the bottom of the unit.
- Before connecting the AC adaptor, ensure you have completed all other connections.
- Risk of electric shock! When you unplug the AC adaptor, always pull the plug from the socket. Never pull the cord.



Connect the AC power cord to

- the DC-IN socket on the back of the main speaker.
- the wall power outlet.

---

## Turn on

In standby mode, there are two ways to turn on the unit.

- Audio signal detected from the 30-pin connector or from the AUX-IN port .
  - ↳ The ring tone is also recognized as audio signal.
- Press the SYNC button on the top of the active unit.
  - ↳ Turn on the unit by pressing SYNC button will bring the unit into sync mode.

---

### ≡ Note

- There is no power key on the unit. It turned on automatically when it detects an audio input.

---

## Switch to standby mode

The unit switches to standby mode in the following situations.

- **In DOCK mode:** no audio signal from docked iPod/iPhone over 15 minutes.
- **In MP3 link mode:** no audio device connected over 15 minutes.
- **In SYNC mode:** press SYNC button for over 5 seconds.
  - ↳ The power indicator turns off.

# 4 Play

---

## Play from iPod/iPhone

You can enjoy audio from iPod/iPhone through this unit.

---

### Compatible iPod/iPhone

The unit supports the following iPod/iPhone models.

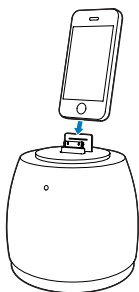
Made for:

- iPod touch (1st, 2nd, 3rd, and 4th generation)
- iPod classic
- iPod nano (2nd, 3rd, 4th, 5th, and 6th generation)
- iPhone 4S
- iPhone 4
- iPhone 3GS
- iPhone 3G
- iPhone

---

### Load the iPod/iPhone

- Insert your iPod/iPhone into the dock.



### Remove the iPod/iPhone

- Pull the iPod/iPhone out of the dock.

---

## Charge the iPod/iPhone

When the unit is connected to power, the docked iPod/iPhone begins to charge automatically.

---

## Listen to the iPod/iPhone

### Note

- Make sure that your iPod/iPhone has been loaded securely.

- Start music play in your iPod/iPhone.  
↳ You can hear music from the speakers.

---

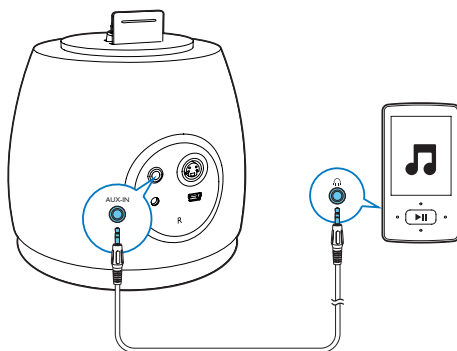
## Play from an external device

You can enjoy audio from an external device through this unit.

---

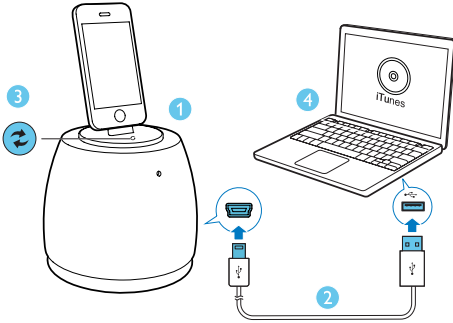
### Play from an external device with MP3 link cable

- 1 Connect MP3 link cable to:
  - the **AUX-IN** socket on the back of the active speaker.
  - the headphone socket on an external device.
- 2 Start to play on the device .



## 5 Other features

### Synchronize the iPod/iPhone with a PC



- 1 Insert the iPod/iPhone into the dock.
- 2 Connect the active speaker to your PC through the supplied USB cable.
- 3 Press on the active speaker:  
↳ The LED indicator flashes.
- 4 Start iTunes to synchronize your docked iPod/iPhone with the PC.

#### Note

- Make sure that you have not disabled automatic synchronization in iTunes. Otherwise, start synchronization from iTunes manually.

#### To exit synchronization mode:

- 1 Eject your iPod/iPhone from iTunes.
- 2 Press on the active speaker:  
↳ The speakers return to audio mode.

## 6 Product information

#### Note

- Product information is subject to change without prior notice.

### Specifications

#### Amplifier

Rated Output Power	2 × 10 W RMS
Frequency Response	60-20000 Hz, ±3dB
Signal to Noise Ratio	> 77 dB
MP3 Link	600 mV RMS 22 kohm

#### Speakers

Speaker Impedance	4 ohm
Speaker Driver	2.5 inch full range + dia 60mm × 2 Woox

#### General information

AC power	Model: AS360-120-AQ300 Input: 100-240 V~, 50/60 Hz 1.2 A Output: 12.0V 3A
----------	---

Operation Power Consumption	10 W
Standby Power consumption	<0.5 W

Dimensions - Main Unit (diameter × height)	W148*D148*H150mm
--	------------------

Weight - With Packing - Main Unit	3.1 kg 0.8 kg
---	------------------



# 7 Troubleshooting



## Warning

- Never remove the casing of this apparatus.

To keep the warranty valid, never try to repair the system yourself.

If you encounter problems when using this apparatus, check the following points before requesting service. If the problem remains unsolved, go to the Philips web site ([www.philips.com/welcome](http://www.philips.com/welcome)). When you contact Philips, ensure that the apparatus is nearby and the model number and serial number are available.

### No power

- Make sure that the AC power plug of the device is connected properly.
- Make sure that there is power at the AC outlet.

### No sound

- Adjust the volume.
- Check whether you have started music play.

### No response from the unit

- Disconnect and reconnect the AC power plug.

# 8 Notice

Any changes or modifications made to this device that are not expressly approved by Philips Consumer Lifestyle may void the user's authority to operate the equipment.

## Notice for the USA

**This equipment has been tested and found to comply with the limits for a Class B digital device, pursuant to part 15 of the FCC Rules.**

These limits are designed to provide reasonable protection against harmful interference in a residential installation. This equipment generates, uses, and can radiate radio frequency energy and, if not installed and used in accordance with the instruction manual, may cause harmful interference to radio communications.

However, there is no guarantee that interference will not occur in a particular installation. If this equipment does cause harmful interference to radio or television reception, which can be determined by turning the equipment off and on, the user is encouraged to try to correct the interference by one or more of the following measures:

- Relocate the receiving antenna.
- Increase the separation between equipment and receiver.
- Connect the equipment into an outlet on a circuit different from that to which the receiver is connected.
- Consult the dealer or an experienced radio/TV technician for help.

---

## Disposal of your old product and batteries

Your product is designed and manufactured with high quality materials and components, which can be recycled and reused. Never dispose of your product with other household waste. Please inform yourself about the local rules on the separate collection of electrical and electronic products and batteries. The correct disposal of these products helps prevent potentially negative consequences on the environment and human health. Please visit [www.recycle.philips.com](http://www.recycle.philips.com) for additional information on a recycling center in your area.

### Caution

- Removal of the built-in battery invalidates the warranty and may destroy the product.

### Environmental information

All unnecessary packaging has been omitted. We have tried to make the packaging easy to separate into three materials: cardboard (box), polystyrene foam (buffer) and polyethylene (bags, protective foam sheet.) Your system consists of materials which can be recycled and reused if disassembled by a specialized company. Please observe the local regulations regarding the disposal of packaging materials, exhausted batteries and old equipment.

### Be responsible Respect copyrights

The making of unauthorized copies of copy-protected material, including computer programs, files, broadcasts and sound recordings, may be an infringement of copyrights and constitute a criminal offence. This equipment should not be used for such purposes.



"Made for iPod" and "Made for iPhone" mean that an electronic accessory has been designed to connect specifically to iPod or iPhone respectively, and has been certified by the developer to meet Apple performance standards. Apple is not responsible for the operation of this device or its compliance with safety and regulatory standards. Please note that the use of this accessory with iPod or iPhone may affect wireless performance. iPod and iPhone are trademarks of Apple Inc., registered in the U.S. and other countries.

Philips Consumer Lifestyle  
A division of Philips Electronics North America Corporation  
P.O. Box 10313  
Stamford, CT 06904  
Phone: 1-888-PHILIPS (744-5477)

Meet Philips at the Internet  
<http://www.philips.com/welcome>



Specifications are subject to change without notice  
© 2011 Koninklijke Philips Electronics N.V.  
All rights reserved.

DS6200\_37\_UM\_V1.1

