

Register your product and get support at
www.philips.com/welcome

Immersive
5000 series



Quick start guide

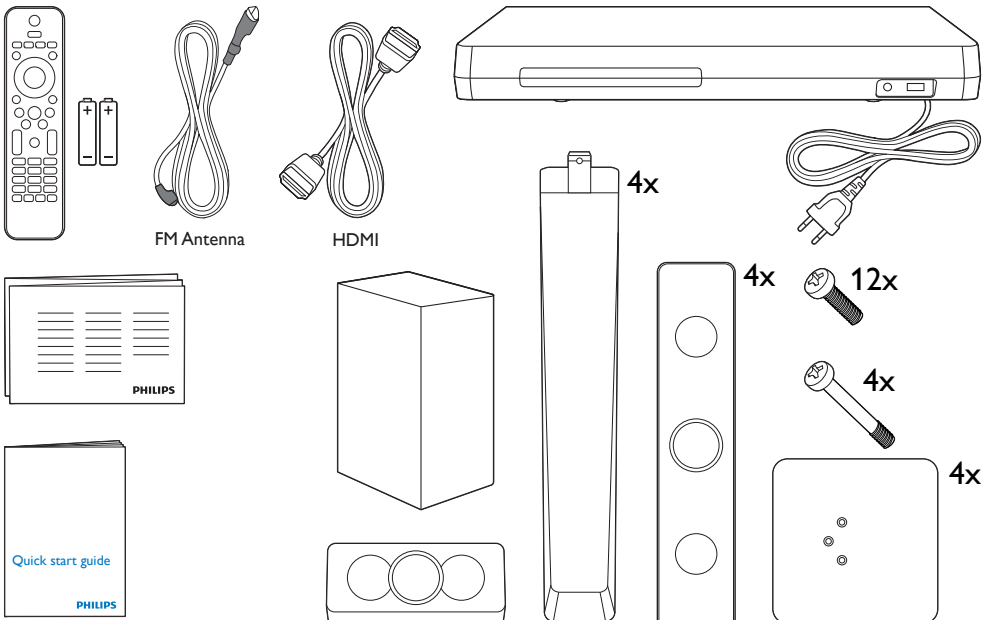
PHILIPS



EN Before using your product, read all accompanying safety information

ES Antes de usar el producto, consulte la información de seguridad que se encuentra adjunta

PT Antes de usar o produto, leia todas as informações de segurança em anexo



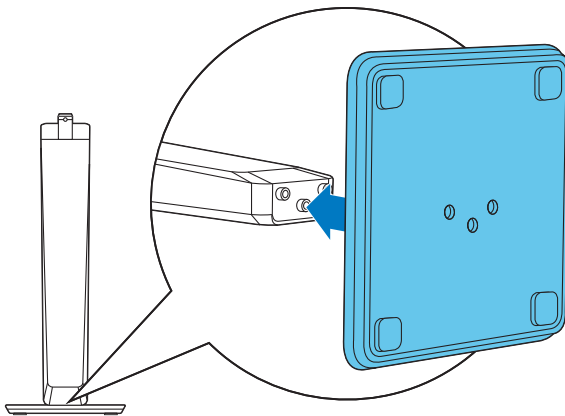
1

EN Stand mount the speakers

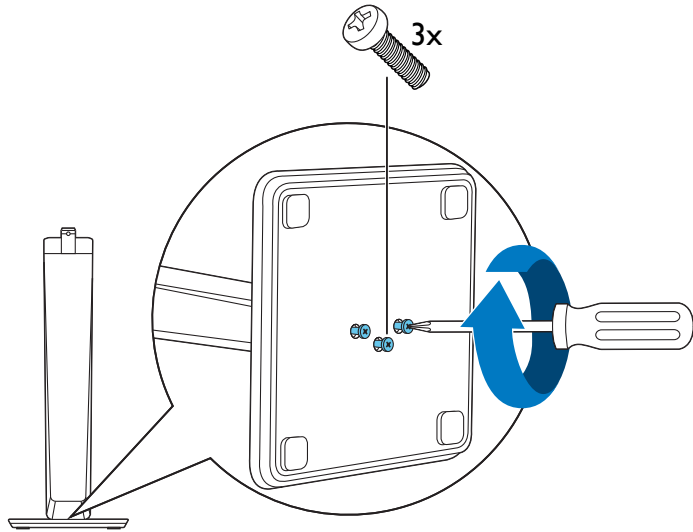
ES Montaje de los altavoces en el soporte

PT Montar as caixas acústicas

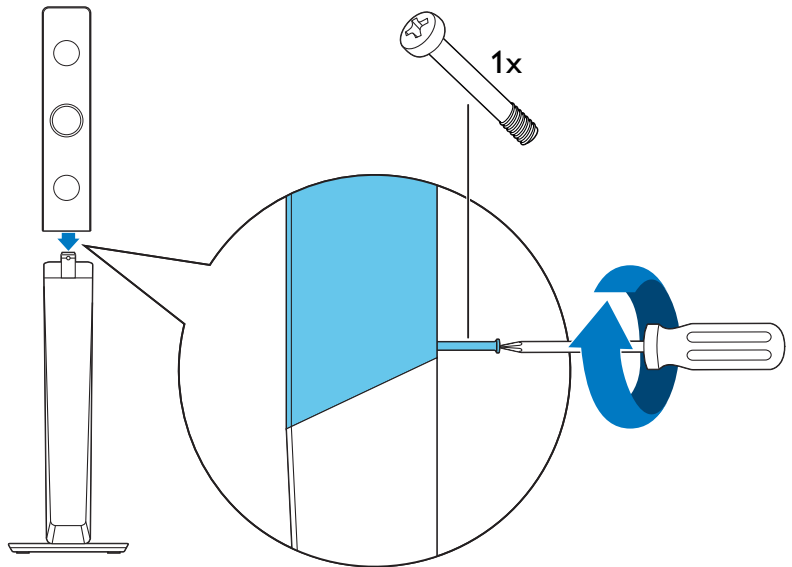
1



2

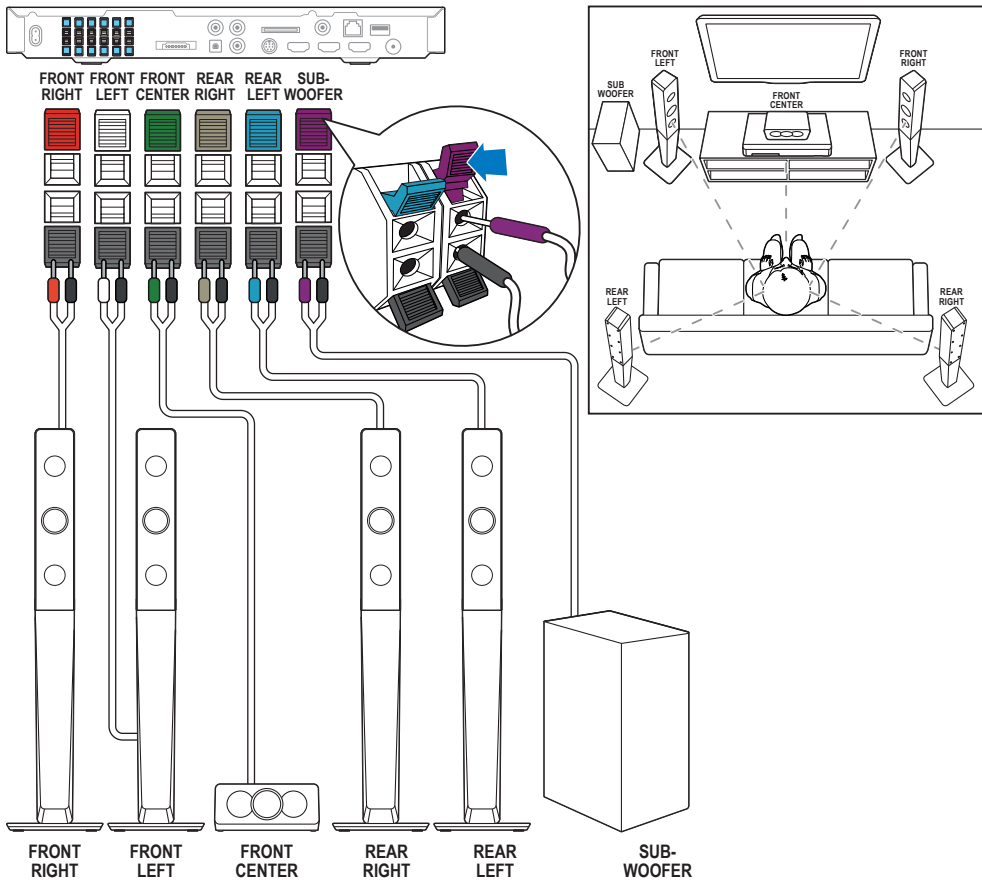


3



2

- EN** Connect the home theater
- ES** Conecte el sistema de cine en casa
- PT** Conectar o Home Theater

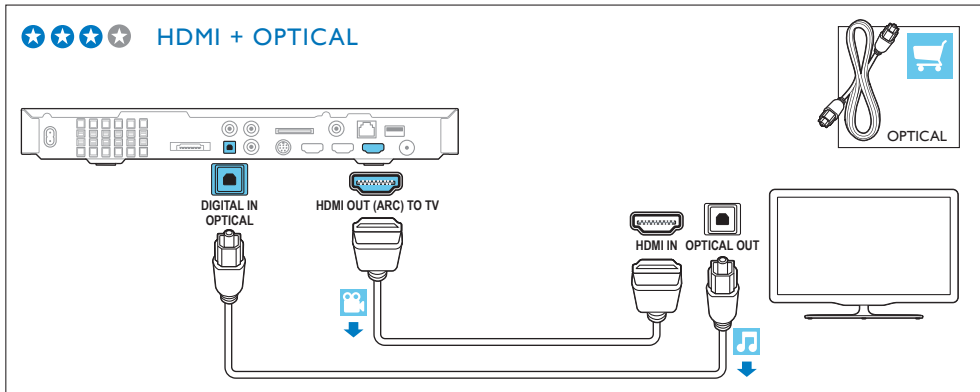
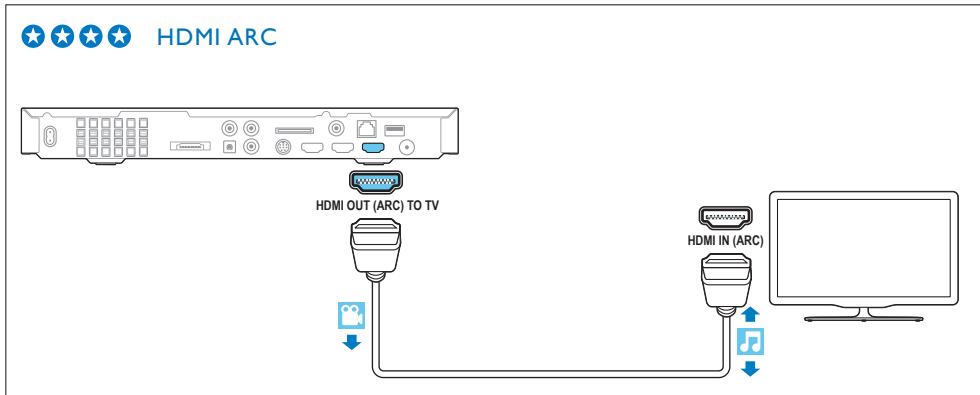


3

EN Connect to TV in one of these ways

ES Conecte al TV de alguna de las siguientes maneras

PT Conecte à TV de uma destas maneiras

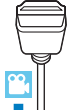


★ ★ ★ ★ HDMI + COAXIAL



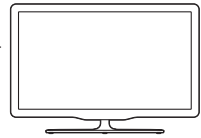
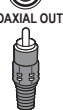
DIGITAL IN
COAXIAL

HDMI OUT (ARC) TO TV



HDMI IN

COAXIAL OUT

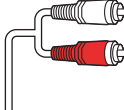


★ ★ ★ ★ HDMI + AUDIO L/R



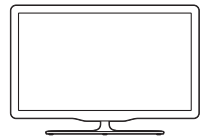
L
R
AUDIO IN

HDMI OUT (ARC) TO TV



HDMI IN

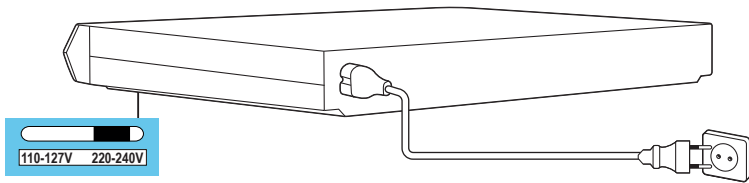
L
R
AUDIO OUT



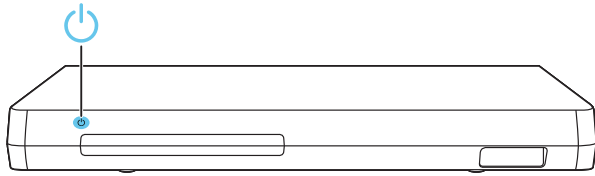
4

- EN** Switch on the home theater
- ES** Encienda el sistema de cine en casa
- PT** Ligar o Home Theater

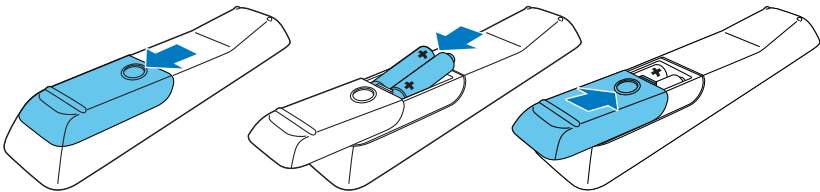
1



2



3

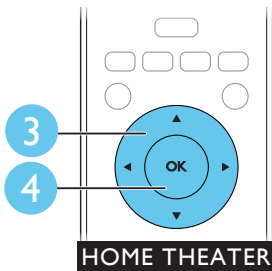
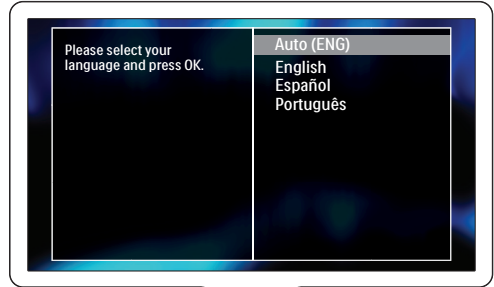
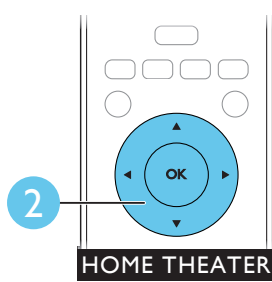
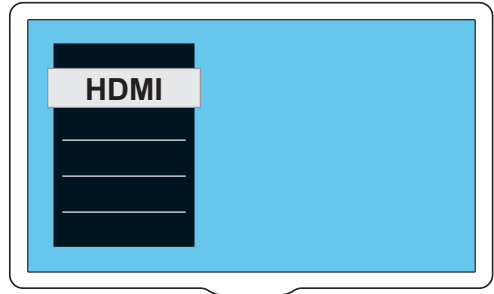
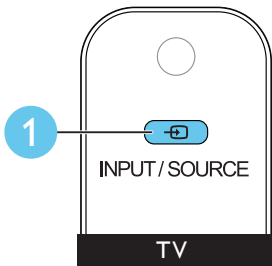


5

EN Complete the first time setup

ES Complete la configuración inicial

PT Fazer a configuração inicial

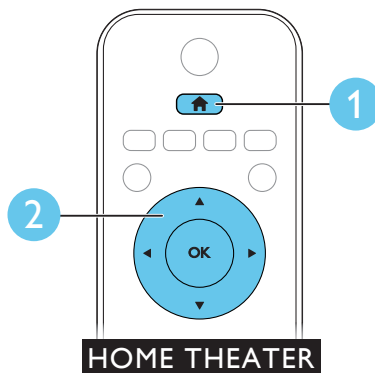


6

EN Need help with your product? Select Help to access the onscreen user manual

ES ¿Necesita ayuda con su producto? Seleccione Ayuda para acceder al manual del usuario en pantalla

PT Precisa de ajuda com o produto? Clique na ajuda para ter acesso ao manual do usuário na tela

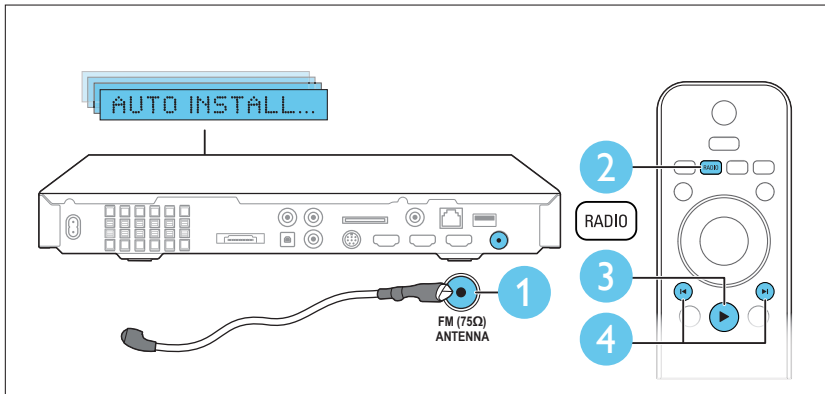
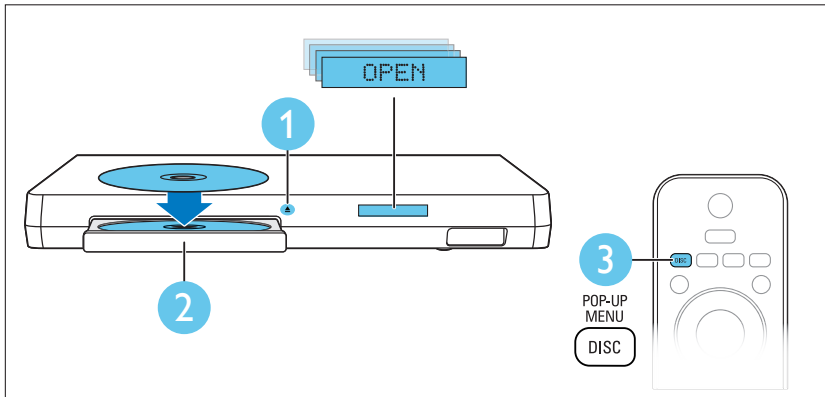


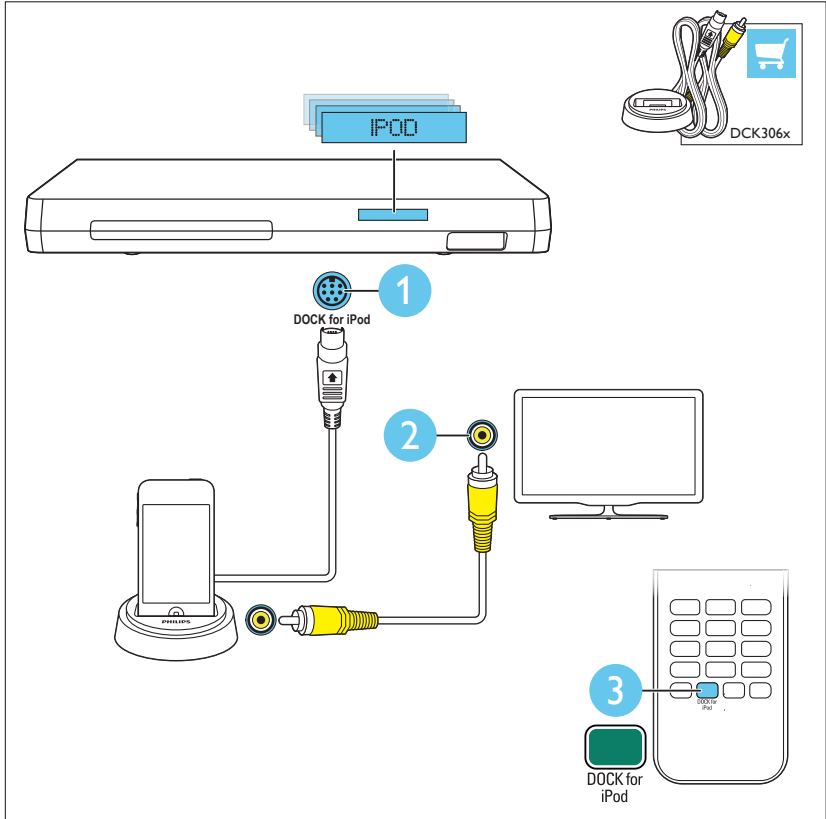
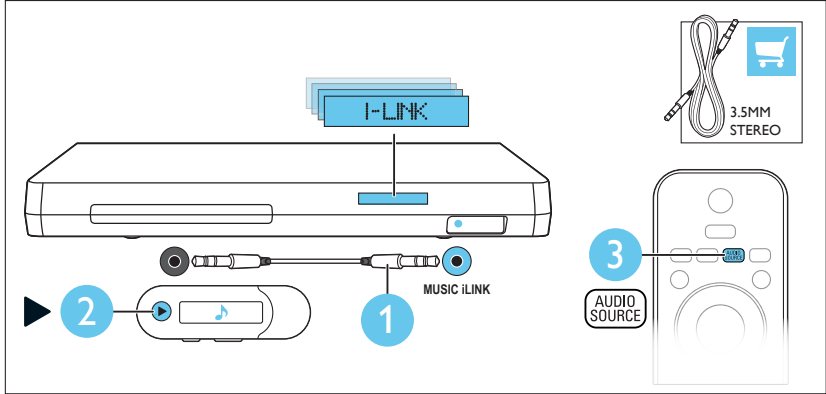
7

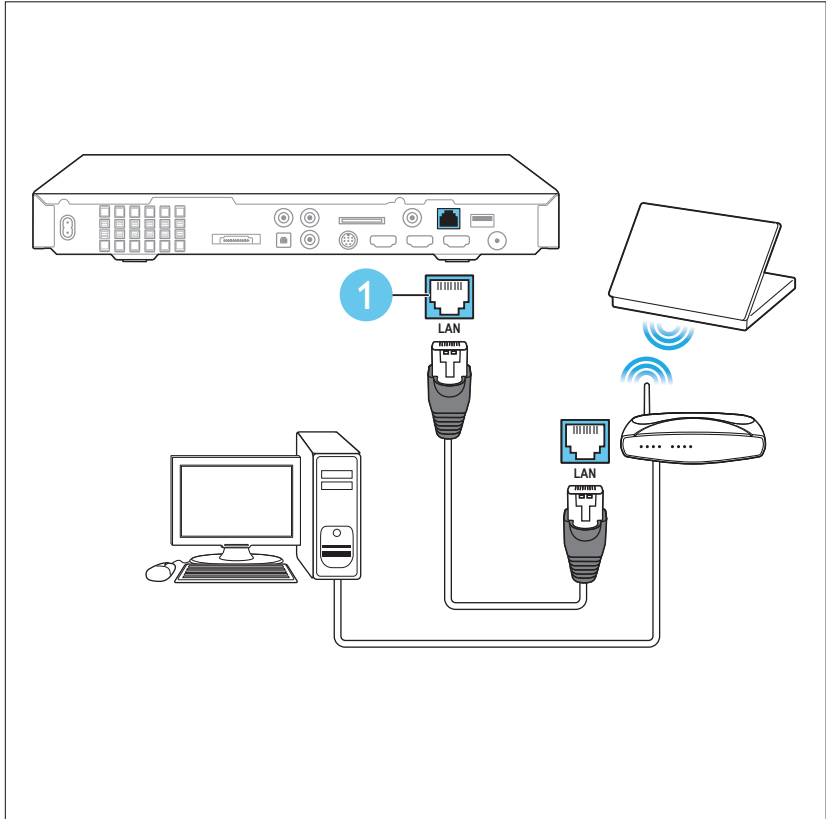
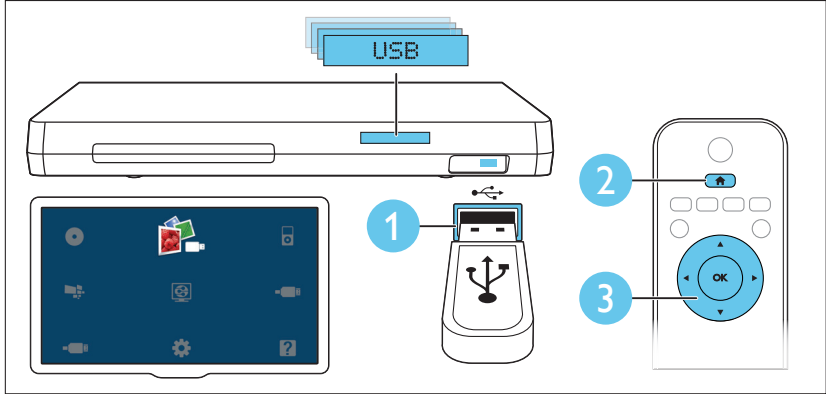
EN Use your home theater

ES Use el sistema de cine en casa

PT Usar o Home Theater









- EN** For sustainability, the user manual is not printed and available in your product as onscreen help. A printable user manual as well as product updates is available from www.philips.com/support.
- ES** Por motivos de sostenibilidad, el manual de usuario no está en formato impreso, aunque puede verlo en formato de ayuda en pantalla en el propio producto. En www.philips.com/support, puede acceder a un manual de usuario en formato preparado para impresión y también a actualizaciones del producto.
- PT** Por motivos de sustentabilidade, o manual de utilizador não está disponível na versão impressa, mas sim como ajuda no ecrã. Um manual de utilizador imprimível, bem como actualizações do produto, encontra-se disponível a partir do site www.philips.com/support.



www.philips.com/support



Non-contractual images. / Images non contractuelles. /
Außervertragliche Bilder:

All registered and unregistered trademarks are property
of their respective owners.

Specifications are subject to change without notice

Trademarks are the property of Koninklijke Philips Electronics N.V.
or their respective owners

2012 © Koninklijke Philips Electronics N.V. All rights reserved

www.philips.com
sgsn_1152/78_v1

Evite o uso prolongado do aparelho
com volume superior a 85 decibéis, pois
isto poderá prejudicar a sua audição.
Potência total de saída de
800W RMS, (+/- 0.5 dB, 10% THD)



Be responsible
Respect copyrights

