

Register your product and get support at  
[www.philips.com/welcome](http://www.philips.com/welcome)

MC127



# User manual

# PHILIPS



# Contents

---

<b>1</b>	<b>Important</b>	<b>4</b>
	Safety	4
	Notice	6

---

<b>2</b>	<b>Your Micro Hi-Fi System</b>	<b>8</b>
	Introduction	8
	What's in the box	8
	Overview of the main unit	9
	Overview of the remote control	10

---

<b>3</b>	<b>Connect</b>	<b>11</b>
	Connect speakers	11
	Connect power	11

---

<b>4</b>	<b>Get started</b>	<b>12</b>
	Prepare the remote control	12
	Turn on	12

---

<b>5</b>	<b>Play disc</b>	<b>13</b>
	Play options	13

---

<b>6</b>	<b>Adjust volume level and sound effect</b>	<b>14</b>
	Adjust volume level	14
	Enhance bass	14
	Mute sound	14

---

<b>7</b>	<b>Listen to radio</b>	<b>15</b>
	Tune to a radio station	15
	Program radio stations automatically	15
	Program radio stations manually	15
	Select a preset radio station	15

---

<b>8</b>	<b>Other features</b>	<b>16</b>
	Listen to an external device	16

---

<b>9</b>	<b>Product information</b>	<b>17</b>
	Specifications	17

---

<b>10</b>	<b>Troubleshooting</b>	<b>18</b>
-----------	------------------------	-----------

# 1 Important

## Safety

Know these safety symbols



This 'bolt of lightning' indicates uninsulated material within your unit may cause an electrical shock. For the safety of everyone in your household, please do not remove product covering.

The 'exclamation mark' calls attention to features for which you should read the enclosed literature closely to prevent operating and maintenance problems.

**WARNING:** To reduce the risk of fire or electric shock, this apparatus should not be exposed to rain or moisture and objects filled with liquids, such as vases, should not be placed on this apparatus.

**CAUTION:** To prevent electric shock, fully insert the plug. (For regions with polarized plugs: To prevent electric shock, match wide blade to wide slot.)

## Important Safety Instructions

- ① Read these instructions.
- ② Keep these instructions.
- ③ Heed all warnings.
- ④ Follow all instructions.
- ⑤ Do not use this apparatus near water.
- ⑥ Clean only with dry cloth.
- ⑦ Do not block any ventilation openings. Install in accordance with the manufacturer's instructions.

- ⑧ Do not install near any heat sources such as radiators, heat registers, stoves, or other apparatus (including amplifiers) that produce heat.
- ⑨ Protect the power cord from being walked on or pinched, particularly at plugs, convenience receptacles, and the point where they exit from the apparatus.
- ⑩ Only use attachments/accessories specified by the manufacturer.
- ⑪ Use only with the cart, stand, tripod, bracket, or table specified by the manufacturer or sold with the apparatus. When a cart is used, use caution when moving the cart/apparatus combination to avoid injury from tip-over.



- ⑫ Unplug this apparatus during lightning storms or when unused for long periods of time.
- ⑬ Refer all servicing to qualified service personnel. Servicing is required when the apparatus has been damaged in any way, such as power-supply cord or plug is damaged, liquid has been spilled or objects have fallen into the apparatus, the apparatus has been exposed to rain or moisture, does not operate normally, or has been dropped.
- ⑭ **Battery usage CAUTION** – To prevent battery leakage which may result in bodily injury, property damage, or damage to the unit:
  - Install all batteries correctly, + and - as marked on the unit.
  - Do not mix batteries (old and new or carbon and alkaline, etc.).

- Remove batteries when the unit is not used for a long time.
- Batteries (battery pack or batteries installed) shall not be exposed to excessive heat such as sunshine, fire or the like.

- ⑮ **Apparatus shall not be exposed to dripping or splashing.**
- ⑯ **Do not place any sources of danger on the apparatus (e.g. liquid filled objects, lighted candles).**
- ⑰ **Where the MAINS plug or an appliance coupler is used as the disconnect device, the disconnect device shall remain readily operable.**



### Warning

- Never remove the casing of this apparatus.
- Never lubricate any part of this apparatus.
- Never place this apparatus on other electrical equipment.
- Keep this apparatus away from direct sunlight, naked flames or heat.
- Never look into the laser beam inside the apparatus.
- Ensure that you always have easy access to the power cord, plug or adaptor to disconnect the apparatus from the power.

## Hearing safety

### Listen at a moderate volume.

- Using headphones at a high volume can impair your hearing. This product can produce sounds in decibel ranges that may cause hearing loss for a normal person, even for exposure less than a minute. The higher decibel ranges are offered for those that may have already experienced some hearing loss.
- Sound can be deceiving. Over time your hearing 'comfort level' adapts to higher volumes of sound. So after prolonged listening, what sounds 'normal' can actually be loud and harmful to your hearing. To guard against this, set your volume to a safe

level before your hearing adapts and leave it there.

### To establish a safe volume level:

- Set your volume control at a low setting.
- Slowly increase the sound until you can hear it comfortably and clearly, without distortion.

### Listen for reasonable periods of time:

- Prolonged exposure to sound, even at normally 'safe' levels, can also cause hearing loss.
- Be sure to use your equipment reasonably and take appropriate breaks.

### Be sure to observe the following guidelines when using your headphones.

- Listen at reasonable volumes for reasonable periods of time.
- Be careful not to adjust the volume as your hearing adapts.
- Do not turn up the volume so high that you can't hear what's around you.
- You should use caution or temporarily discontinue use in potentially hazardous situations. Do not use headphones while operating a motorized vehicle, cycling, skateboarding, etc.; it may create a traffic hazard and is illegal in many areas.



### Caution

- Use of controls or adjustments or performance of procedures other than herein may result in hazardous radiation exposure or other unsafe operation.

## Mains fuse

This information applies only to products with a UK mains plug.

This product is fitted with an approved molded plug. If you replace the fuse, use one with:

- the ratings shown on the plug,
- a BS 1362 approval, and
- the ASTA approval mark.

Contact your dealer if you are not sure about what type of fuse to use.

Caution: To conform with the EMC directive (2004/108/EC), do not detach the plug from the power cord.

---

## Notice

Any changes or modifications made to this device that are not expressly approved by Philips Consumer Lifestyle may void the user's authority to operate the equipment.



This product complies with the radio interference requirements of the European Community.



Your product is designed and manufactured with high quality materials and components, which can be recycled and reused.



When this crossed-out wheeled bin symbol is attached to a product it means that the product is covered by the European Directive 2002/96/EC.

Please inform yourself about the local separate collection system for electrical and electronic products.

Please act according to your local rules and do not dispose of your old products with your normal household waste. Correct disposal of your old product helps to prevent potential negative consequences for the environment and human health.



Your product contains batteries covered by the European Directive 2006/66/EC, which cannot be disposed with normal household waste. Please inform yourself about the local rules on separate collection of batteries because correct disposal helps to prevent negative consequences for the environmental and human health.

### Environmental information

All unnecessary packaging has been omitted. We have tried to make the packaging easy to separate into three materials: cardboard (box), polystyrene foam (buffer) and polyethylene (bags, protective foam sheet.)

Your system consists of materials which can be recycled and reused if disassembled by a specialized company. Please observe the local regulations regarding the disposal of packaging materials, exhausted batteries and old equipment.

---

## Copyright notice



**Be responsible  
Respect copyrights**

This item incorporates copy protection technology that is protected by U.S. patents and other intellectual property rights of Rovi Corporation. Reverse engineering and disassembly are prohibited.

**This apparatus includes this label:**



**Class II equipment symbol:**



This symbol indicates that this product has a double insulation system.



#### Note

- The type plate is located on the bottom of the apparatus.

## 2 Your Micro Hi-Fi System

Congratulations on your purchase, and welcome to Philips! To fully benefit from the support that Philips offers, register your product at [www.Philips.com/welcome](http://www.Philips.com/welcome).

---

### Introduction

**With this unit, you can:**

- enjoy audio from discs and other external devices
- listen to radio stations

**You can enrich sound output with the following sound effect:**

- Dynamic Bass Boost (DBB)

**The unit supports the following media format:**



---

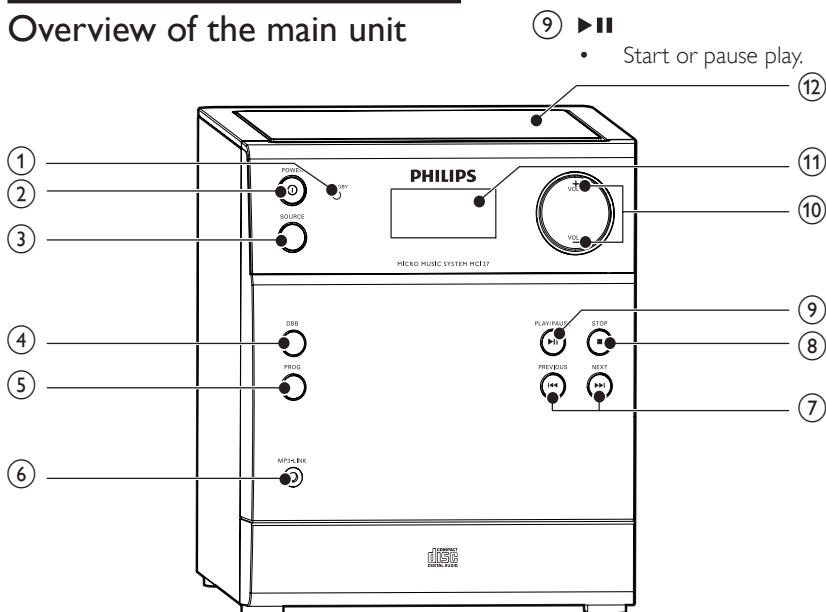
### What's in the box

Check and identify the contents of your package:

- Main unit
- 2 speakers
- Remote control
- MP3 link cable
- User manual
- Quick start guide



## Overview of the main unit



### ① STANDBY

- Indicate the standby mode.

### ② POWER

- Turn on/off the unit.
- Switch to standby mode.

### ③ SOURCE

- Select a source: disc, FM, or AUX.

### ④ DBB

- Turns on or off dynamic bass enhancement.

### ⑤ PROG

- Program tracks.
- Program radio stations.

### ⑥ MP3 LINK

- Jack for an external audio device.

### ⑦ I<< / I>>

- Skip to the previous/next track.
- Search within a track or disc.
- Tune to a radio station.

### ⑧

- Stop play or erase a program.

### ⑨

- Start or pause play.

### ⑩ VOL +/-

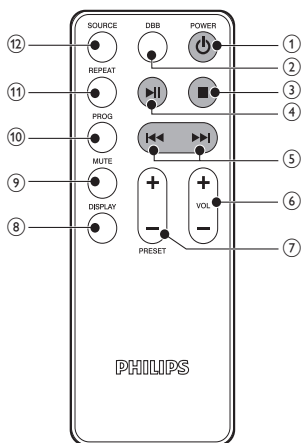
- Adjust volume.

### ⑪ Display panel

- Show current status.

### ⑫ Disc compartment

## Overview of the remote control



- Program radio stations.

### ⑪ REPEAT

- Play a track or all tracks repeatedly.

### ⑫ SOURCE

- Select a source: disc, FM, or AUX.

### ① POWER

- Turn on/off the unit.
- Switch to standby mode.

### ② DBB

- Turns on or off dynamic bass boost.

### ③ ■

- Stop play or erase a program.

### ④ ►||

- Start or pause play.

### ⑤ ◀◀/▶▶

- Skip to the previous/next track.
- Search within a track or disc.
- Tune to a radio station.

### ⑥ VOL +/-

- Adjust volume.

### ⑦ PRESET +/-

- Select a preset radio station.

### ⑧ DISPLAY

- Show current status.

### ⑨ MUTE

- Mute or restore volume.

### ⑩ PROG

- Program tracks.

# 3 Connect

## Connect speakers

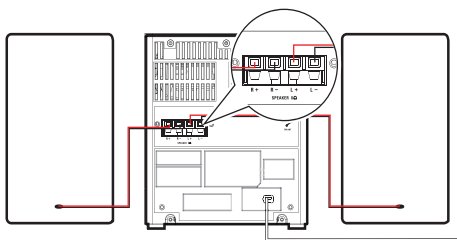
### Note

- Insert the stripped portion of each speaker wire into the socket completely.
- For optimal sound, use the supplied speakers only.
- Connect only speakers with impedance that is the same or higher than the supplied speakers. Refer to the Specifications section of this manual.

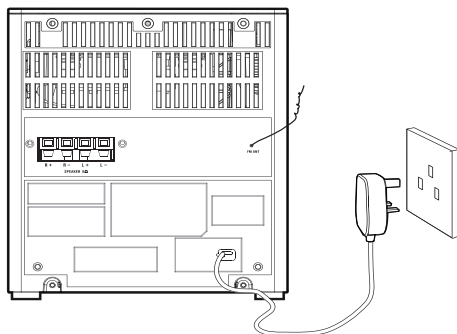
- 1 For one speaker, insert the red wire to the red (R+) socket on the back of the main unit, and the black wire into the black (R-) socket.
- 2 For another speaker, repeat step 1 to insert the wires into the red (L+) and the black (L-) socket.

### To insert each speaker wire:

- 1 Hold down the socket flap.
- 2 Insert the speaker wire fully.
- 3 Release the socket flap.



Connect the AC power cable to the power outlet.



## Connect power



### Caution

- Risk of product damage! Make sure that the power supply voltage corresponds to the voltage printed on the back or the underside of the Micro Hi-Fi system.
- Before connecting the AC power cord, make sure that you have completed all other connections.

## 4 Get started

Always follow the instructions in this chapter in sequence.

If you contact Philips, you will be asked for the model and serial number of this apparatus. The model number and serial number are on the bottom of the apparatus. Write the numbers here:

Model No. \_\_\_\_\_

Serial No. \_\_\_\_\_

### Prepare the remote control



#### Caution

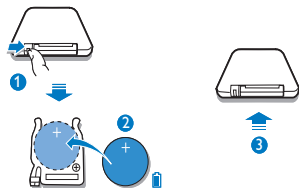
- Risk of explosion! Keep batteries away from heat, sunshine or fire. Never discard batteries in fire.
- Risk of decreased battery life! Never mix different brands or types of batteries.
- Risk of product damage! When the remote control is not used for long periods, remove the batteries.
- Danger of explosion if battery is incorrectly replaced. Replace only with the same or equivalent type.

#### For first-time use:

- 1 Remove the protective tab to activate the remote control battery.

#### To replace the remote control battery:

- 1 Open the battery compartment.
- 2 Insert one CR2025 battery with correct polarity (+/-) as indicated.
- 3 Close the battery compartment.



### Turn on

Press **POWER**.

- ↳ The unit switches to the last selected source.

### Switch to standby

Press **POWER** again to switch the unit to standby mode.

- ↳ The red standby indicator turns on.
- ↳ The backlight on the display panel turns off.

## 5 Play disc

- 1 Press **SOURCE** repeatedly to select the disc source.
- 2 Open the disc compartment.
- 3 Insert a disc with the printed side facing up.
- 4 Close the disc compartment.
  - To pause/resume play, press ►||.
  - To stop play, press ■.

---

### Play options

#### Skip to a track

During play, press ◀◀ / ▶▶ to select another track.

---

#### Search within a track

- 1 During play, press and hold ◀◀ / ▶▶.
- 2 Release to resume normal play.

---

#### Display play information

During play, press **DISPLAY** repeatedly to select different play information.

---

#### Program tracks

You can program a maximum of 20 tracks.

- 1 In disc mode, in the stop position, press **PROG** to activate the program mode.
  - ↳ [P-] (program) is displayed.
- 2 Press ◀◀ / ▶▶ to select a track number, and then press **PROG** to confirm.
- 3 Repeat steps 1 to 2 to select and store all tracks to program.
- 4 Press ►|| to play the programmed tracks.
  - ↳ During play, [P-] is displayed.
    - To erase the program, in the stop position, press ■.

---

#### Repeat play

- 1 During play, press **REPEAT** repeatedly to select:
  - [r1]: play the current track repeatedly.
  - [rA]: play all tracks repeatedly.
- 2 To return to normal play, press **REPEAT** repeatedly until repeat mode is no longer displayed.

## 6 Adjust volume level and sound effect

---

### Adjust volume level

During play, press **VOL +/-** to increase/decrease the volume level.

---

### Enhance bass

During play, press **DBB** to turn on or off dynamic bass enhancement.

---

### Mute sound

During play, press **MUTE** to mute or restore the volume.

# 7 Listen to radio

## Tune to a radio station

- 1 Press **SOURCE** repeatedly to select FM source.
- 2 Press and hold **◀◀ / ▶▶** for more than 2 seconds.
  - ↳ The radio tunes to a station with strong reception automatically.
- 3 Repeat step 2 to tune to more stations.
  - To tune to a weak station, press **◀◀ / ▶▶** repeatedly until you find optimal reception.

## Program radio stations automatically



### Note

- You can program a maximum of 20 preset FM radio stations.

In tuner mode, press and hold **PROG** for more than 2 seconds to activate automatic program mode.

- ↳ **[AUTO]** is displayed.
- ↳ All available stations are programmed in the order of waveband reception strength.
- ↳ The first programmed radio station is broadcast automatically.

## Program radio stations manually



### Note

- You can program a maximum of 20 preset radio stations.

- 1 Tune to a radio station.
- 2 Press **PROG** to activate program mode.
  - ↳ **[P-]** is displayed.
- 3 Press **PRESET +/-** to allocate a number to this radio station, and then press **PROG** to confirm.
  - ↳ The preset number and the frequency of the preset station are displayed.
- 4 Repeat the above steps to program other stations.



### Tip

- To overwrite a programmed station, store another station in its place.

## Select a preset radio station

In tuner mode, press **PRESET +/-** to select a preset number.



### Tip

- Position the antenna as far as possible from TV, VCR or other radiation source.
- For optimal reception, fully extend and adjust the position of the antenna.

## 8 Other features

---

### Listen to an external device

You can listen to an external device through this micro Hi-Fi system.

- 1** Press **SOURCE** repeatedly to select **AUX** source.
- 2** Connect the supplied MP3 link cable to:
  - **MP3 LINK** jack (3.5 mm) on the unit
  - the headphone jack on an external device
- 3** Start to play the device (see the device user manual).



## 9 Product information



### Note

- Product information is subject to change without prior notice.

## Specifications

### Amplifier

Rated Output Power	2 x 2 W RMS
Frequency Response	60 - 16 kHz, $\pm 3$ dB
Signal to Noise Ratio	>50 dBA
Aux Input	0.5 V RMS 20 kohm

### Disc

Laser Type	Semiconductor
Disc Diameter	12 cm/8 cm
Support Disc	CD-DA, CD-R, CD-RW
Audio DAC	24 Bits / 44.1 kHz
Total Harmonic Distortion	<1%
Frequency Response	60 Hz -16 kHz (44.1 kHz)
S/N Ratio	>50 dBA

### Tuner

Tuning Range	FM: 87.5 - 108 MHz
Tuning grid	50KHz
Sensitivity	<22 dBf
- Mono, 26dB S/N Ratio	<43 dBf
- Stereo, 46dB S/N Ratio	
Search Selectivity	>28 dBf
Total Harmonic Distortion	<3%
Signal to Noise Ratio	>55 dB

### Speakers

Speaker Impedance	8 ohm
Speaker Driver	3" full range
Sensitivity	>82 dB/m/W

### General information

AC power	220 - 240 V, 50 Hz
Operation Power Consumption	12 W
Standby Power Consumption	<0.5 W
Dimensions	152 x 175 x
- Main Unit (W x H x D)	205 mm
- Speaker Box (W x H x D)	132 x 175 x 158 mm
Weight	3.82 kg
- With Packing	1.1 kg
- Main Unit	2 x 0.9 kg
- Speaker Box	

# 10 Troubleshooting



## Caution

- Never remove the casing of this apparatus.

To keep the warranty valid, never try to repair the system yourself.

If you encounter problems when using this apparatus, check the following points before requesting service. If the problem remains unsolved, go to the Philips web site ([www.philips.com/welcome](http://www.philips.com/welcome)). When you contact Philips, ensure that the apparatus is nearby and the model number and serial number are available.

### No power

- Ensure that the AC power cord of the unit is connected properly.
- Ensure that there is power at the AC outlet.
- As a power-saving feature, the system switches off automatically 15 minutes after track play reaches the end and no control is operated.

### No response from the unit

- Disconnect and reconnect the AC power plug, and then turn on the system again.

### No sound or poor sound

- Adjust the volume.
- Check if the speakers are connected correctly.
- Check if the stripped speaker wires are clamped.

### Remote control does not work

- Before you press any function button, first select the correct source with the remote control instead of the main unit.
- Reduce the distance between the remote control and the unit.
- Insert the battery with its polarities (+/- signs) aligned as indicated.
- Replace the battery.

- Aim the remote control directly at the sensor on the front of the unit.

### No disc detected

- Insert a disc.
- Check if the disc is inserted upside down.
- Wait until the moisture condensation at the lens has cleared.
- Replace or clean the disc.
- Use a finalized CD or correct format disc.

### Poor radio reception

- Increase the distance between the unit and your TV or VCR.
- Fully extend the antenna.



