

PHILIPS

Clock Radio

3000 Series

R3505



User manual

Register your product and get support at
www.philips.com/support

Contents

1	Important	2
	Safety	2

2	Your clock radio	3
	Introduction	3
	What's in the box	3
	Overview of the clock radio	3

3	Get started	4
	Install batteries	4
	Connect power	4
	Set time	4
	Turn on	4

4	Listen to DAB+ radio	5
	Tune to DAB+ radio stations	5
	Store DAB+ radio stations automatically	5
	Store DAB+ radio stations manually	5
	Select a preset DAB+ radio station	5
	Show DAB+ information	5
	Use DAB+ menu	6

5	Listen to FM radio	6
	Tune to FM radio stations	6
	Store FM radio stations automatically	6
	Store FM radio stations manually	6
	Select a preset radio station	7
	Show RDS information	7
	Use FM menu	7

6	Other features	8
	Set alarm time	8
	Set sleep timer	8
	Adjust volume	8
	Adjust display brightness	8

7	Product information	9
----------	----------------------------	----------

8	Troubleshooting	9
----------	------------------------	----------

9	Notice	10
----------	---------------	-----------

1 Important

Safety



Warning

- Never remove the casing of this clock radio.
 - Never lubricate any part of this clock radio.
 - Never place this clock radio on other electrical equipment.
 - Keep this clock radio away from direct sunlight, naked flames or heat.
 - Make sure that you always have easy access to the power cord, plug or adaptor to disconnect the clock radio from the power.
- Read these instructions.
 - Heed all warnings.
 - Follow all instructions.
 - Do not block any ventilation openings. Install in accordance with the manufacturer's instructions.
 - Do not install near any heat sources such as radiators, heat registers, stoves, or other apparatus (including amplifiers) that produce heat.
 - Protect the power cord from being walked on or pinched, particularly at plugs, convenience receptacles, and the point where they exit from the clock radio.
 - Only use attachments/accessories specified by the manufacturer.
 - Unplug this apparatus during lightning storms or when unused for long periods of time.
 - Refer all servicing to qualified service personnel. Servicing is required when the apparatus has been damaged in any way, such as power-supply cord or plug is damaged, liquid has been spilled or objects have fallen into the apparatus, the apparatus has been exposed to rain or moisture, does not operate normally, or has been dropped.
 - Battery usage CAUTION - To prevent battery leakage which may result in bodily injury, property damage, or damage to the clock radio:
 - Install all batteries correctly, + and - as marked on the unit.
 - Remove batteries when the unit is not used for a long time.
 - The battery shall not be exposed to excessive heat such as sunshine, fire or the like.
 - This clock radio shall not be exposed to dripping or splashing.
 - Do not place any sources of danger on the clock radio (e.g. liquid filled objects, lighted candles).
 - Where the plug of the Direct Plug-in Adapter is used as the disconnect device, the disconnect device shall remain readily operable.

2 Your clock radio

Congratulations on your purchase, and welcome to Philips! To fully benefit from the support that Philips offers, register your product at www.philips.com/support.

Introduction

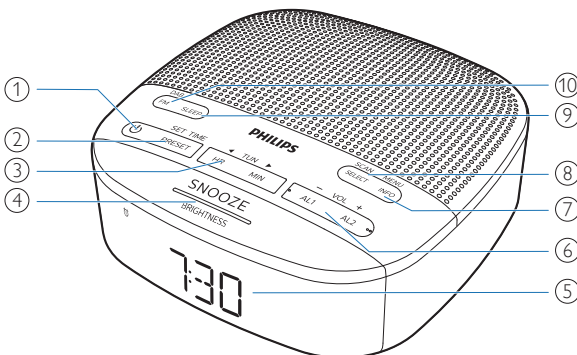
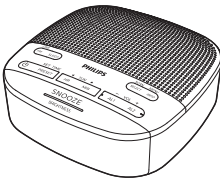
With this clock radio, you can

- listen to both FM and Digital Audio Broadcasting (DAB+) radio;
- set two alarms to ring at different times.


What's in the box

Check and identify the contents of your package:

- Main unit
- AC power adaptor
- Quick start guide
- Safety and Warranty leaflet



Overview of the clock radio

- ①  Turn on or switch to standby.
- ② **PRESET / SET TIME**
 - Store radio stations in memory.
 - Select a preset FM station or DAB station.
 - Set time.
- ③ **HR / MIN / ◀TUN ▶**
 - Tune to radio stations.
 - Set hour and minute.
- ④ **SNOOZE / BRIGHTNESS**
 - Snooze alarm.
 - Adjust display brightness.
- ⑤ **Display panel**
 - Display current status.
- ⑥ **AL1 / AL2 / – VOL +**
 - Set alarm.
 - Adjust volume.
- ⑦ **MENU / INFO**
 - Enter the DAB+ menu.
 - Display DAB/RDS station information.
- ⑧ **SCAN / SELECT**
 - Scan/store radio stations automatically.
 - Confirm a selection.
- ⑨ **SLEEP**
 - Set the sleep timer.
- ⑩ **FM / DAB**
 - Select FM or DAB+ mode.

3 Get started

Always follow the instructions in this chapter in sequence.

Install batteries

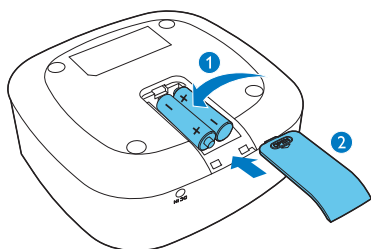
The batteries can only back up clock and alarm settings.



Caution

- Risk of explosion! Keep the batteries away from heat, sunshine or fire. Never discard batteries in fire.
- Batteries contain chemical substances, so they should be disposed of properly.

Insert 2 AAA batteries (not provided) with correct polarity (+/-) as illustrated.



Connect power



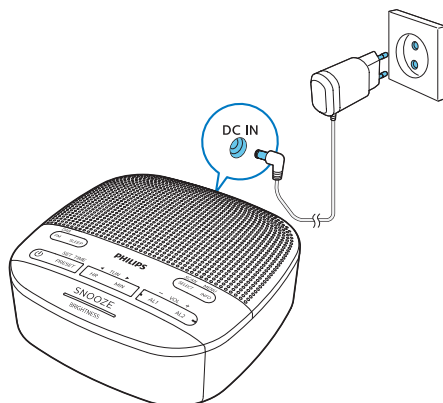
Caution

- Risk of product damage! Make sure that the power voltage corresponds to the voltage printed on the back or underside of the clock radio.
- Risk of electrical shock! When you unplug the power adapter, always pull the plug from the socket. Never pull the cord.
- Use only the AC power adapter specified in the manufacturer or sold with this unit.



Note

- The type plate is located at the bottom of the clock radio.



Set time



Note


- You can only set time in standby mode.

- 1 In standby mode, press and hold **SET TIME** for more than 2 seconds.
- 2 Press **◀ TUN ▶** to select **<24 HR>** or **<12 HR>** hour format, then press **SET TIME** to confirm.
- 3 Press **HR** to set hour and **MIN** to set minute, then press **SET TIME** to confirm.
- 4 Press **◀ TUN ▶** to set date, month and year [DD-MM-YY], then press **SET TIME** to confirm.
- 5 Press **◀ TUN ▶** to select **<UPDATE FROM RADIO>** or **<NO UPDATE>**, then press **SET TIME** to confirm.
↳ [SAVED] is displayed and the time is set.

Turn on

Press  to turn on the clock radio.


↳ The unit switches to the last selected source.

To switch to standby mode, press  again.

↳ The real-time clock is displayed.

4 Listen to DAB+ radio

Tune to DAB+ radio stations

- 1 Press  to turn on the clock radio.
- 2 Press **DAB / FM** repeatedly to select **DAB** mode.
 - ↳ **[DAB]** will be displayed for more than 2 seconds and a DAB icon will be turned on.
 - ↳ The unit will tune to the last tuned station and display the station name.
 - ↳ For the first-time use, **[PRESS SELECT TO SCAN]** will be displayed.
- 3 Press **SCAN / SELECT**.
 - ↳ The unit stores all DAB+ radio stations automatically and broadcasts the first available station.
 - ↳ If no DAB+ station is found, **[NO SIG]** (no DAB+ signal) is displayed.

To tune to a station from the available station list:

- ↳ In DAB mode, press **◀TUN▶** repeatedly to navigate through the available DAB+ stations.

Store DAB+ radio stations automatically

In DAB mode, press and hold **SCAN / SELECT** for more than 2 seconds.

- ↳ The unit scans all the available DAB+ radio stations and broadcasts the first available station.



Tip

- No DAB+ radio station is stored to presets during this process.
- New stations and services will be added in the DAB+ broadcast. To make new DAB+ stations and services available, perform a full scan regularly.

Store DAB+ radio stations manually



Note

- You can store a maximum of 20 preset DAB+ radio stations.

- 1 Tune to a DAB+ radio station.
- 2 Press and hold **PRESET** for more than 2 seconds to activate programming mode.
- 3 Press **◀TUN▶** repeatedly to select a number.
- 4 Press **PRESET** again to confirm.
- 5 Repeat steps 1 to 4 to store more DAB+ radio stations.



Note

- To remove a preset DAB+ radio station, store another station in its place.

Select a preset DAB+ radio station

- 1 In DAB mode, press **PRESET**.
- 2 Press **◀TUN▶** repeatedly to select a preset radio station, then press **SELECT** to confirm.

Show DAB+ information

While listening to DAB+ radio, press **MENU / INFO** repeatedly to scroll through the following information (if available):

- Station name

- Dynamic Label Segment (DLS)
- Signal strength
- Program type (PTY)
- Ensemble Name
- Channel and frequency
- Signal error rate
- Bit rate and audio status
- Time
- Date

Use DAB+ menu

1 In DAB mode, press and hold **MENU / INFO** for more than 2 seconds to access the DAB+ menu.

2 Press **◀ TUN ▶** to scroll through the menu options:

- **[Scan]**: scan all the available DAB+ radio stations.
- **[Manual]**: tune to a specific channel/frequency manually and add it to the station list.
- **[DRC]**: add or remove a degree of compensation for the differences in the dynamic range between radio stations.
- **[Prune]**: remove all the invalid stations from the station list.
- **[System]**: adjust system settings.

3 To select an option, press **SELECT**.

4 Repeat steps 2-3 if any sub-option is available under an option.

[System]

- **[Reset]**: reset all the settings to factory default.
- **[SW VER]** (software version): know the software version of the unit.
- **[Language]**: set system language (English / Deutsch / Italiano / Français / Norsk / Nederlands).



Note

- If no button is pressed within 15 seconds, the menu will exit.

5 Listen to FM radio



Note

- Keep the clock radio away from other electronic devices to avoid radio interference.
- For better reception, fully extend and adjust the position of the FM antenna.

Tune to FM radio stations

1 Press **⏻** to turn on the clock radio.

2 Press **FM / DAB** repeatedly to select FM radio.

3 Press and hold **◀ TUN ▶** for more than 2 seconds.

↳ The clock radio tunes to a station with strong reception automatically.

4 Repeat Step 3 to tune to more radio stations.

To tune to a station manually:

In FM tuner mode, press **◀ TUN ▶** repeatedly to select a frequency.

Store FM radio stations automatically

In FM tuner mode, press and hold **SCAN** for more than 2 seconds.

↳ The unit stores all the available FM radio stations automatically and broadcasts the first station.

Store FM radio stations manually

Note

- You can store a maximum of 20 FM radio stations.

- 1 Tune to an FM radio station.
- 2 Press and hold **PRESET** for more than 2 seconds to activate programming mode.
- 3 Press **◀TUN▶** repeatedly to select a number.
- 4 Press **PRESET** again to confirm.
- 5 Repeat steps 1 to 4 to store more FM radio stations.

Tip

- To remove a pre-stored station, store another station in its place.

Select a preset radio station

- 1 In FM tuner mode, press **PRESET**.
- 2 Press **◀TUN▶** repeatedly to select a preset radio station, then press **SELECT** to confirm.

Show RDS information

RDS (Radio Data System) is a service that allows FM radio stations to show additional information.

While listening, press **MENU / INFO** repeatedly to scroll through the following information (if available):

- Station frequency
- Station name
- Program name

Use FM menu

- 1 In FM tuner mode, press and hold **MENU / INFO** for more than 2 seconds to access the FM menu.
- 2 Press **◀TUN▶** to scroll through the menu options:
 - **[Scan]**: scan settings.
 - **[System]**: adjust system settings.
- 3 To select an option, press **SELECT**.
- 4 Repeat steps 2-3 if any sub-option is available under an option.

[Scan] (scan setting)

- **[All]** (all stations): scan all the available FM radio stations.
- **[Strong]** (strong stations only): scan FM radio stations with strong signals only.

[System]

- **[Reset]**: reset all the settings to factory default.
- **[SW Version]**: know the software version of the unit.
- **[Language]**: set system language (English / Deutsch / Italiano / Français / Norsk / Nederlands).

7 Product information

Note

- Product information is subject to change without prior notice.

Amplifier

Rated Output Power	1W RMS
--------------------	--------

Tuner

Tuning Range	FM: 87.5-108 MHz DAB: 174.92-239.20MHz
--------------	---

Tuning Grid	50 KHz
-------------	--------

Sensitivity	
-------------	--

- Mono, 26 dB S/N Ratio	<22 dBf
-------------------------	---------

Total Harmonic Distortion	<3%
---------------------------	-----

Signal to Noise Ratio	>50 dBA
-----------------------	---------

General information

AC Power (power adaptor)	Brand: Philips; Model: AS030-050-EE060 Input: 100-240V~ 50/60 Hz; 0.15A Output: 5V = 0.6A
--------------------------	---

Operation Power Consumption	<3W
-----------------------------	-----

Standby Power Consumption	<1W
---------------------------	-----

Dimensions (W x H x D)	131 x 54 x 131 mm
------------------------	-------------------

Weight (Main unit)	267.3g
--------------------	--------

8 Troubleshooting



Warning

- Never remove the casing of the product

To keep the warranty valid, never try to repair the device yourself.

If you encounter problems when using this device, check the following points before requesting service. If the problem remains unsolved, go to the Philips webpage (www.philips.com/support). When you contact Philips, make sure that the device is nearby and the model number and serial number are available.

No power

- Make sure that the AC power plug of the unit is connected properly.
- Make sure that there is power at the AC outlet.

No sound

- Adjust the volume.

No response from the unit

- Disconnect and reconnect the AC power plug, then turn on the unit again.

Poor radio reception

- Keep the clock radio away from other electronic devices to avoid radio interference.
- Fully extend and adjust the position of the antenna.

Alarm does not work

- Set the clock/alarm correctly.

Clock/alarm setting erased

- Power has been interrupted or the power plug has been disconnected.
- Reset the clock/alarm.

9 Notice

Any changes or modifications made to this device that are not expressly approved by **MMD Hong Kong Holding Limited** may void the user's authority to operate the product. Hereby, **TPVision Europe B.V.** declares that this product is in compliance with the essential requirements and other relevant provisions of Directive 2014/53/EU. You can find the Declaration of Conformity on www.philips.com/support.



This product complies with the radio interference requirements of the European Community.



This product is designed and manufactured with high-quality materials and components, which can be recycled and reused.



This symbol means the product must not be discarded as household waste and should be delivered to an appropriate collection facility for recycling. Follow local rules and never dispose of the product and rechargeable batteries with normal household waste. Correct disposal of old products and rechargeable batteries helps prevent negative consequences for the environment and human health.



This symbol means that the product contains batteries covered by European Directive 2013/56/EU which cannot be disposed of with normal household waste.

Inform yourself about the the local separate collection system for electrical and electronic products and batteries. Follow local rules and

never dispose of the product and batteries with normal household waste. Correct disposal of old products and batteries helps prevent negative consequences for the environment and human health.

Removing the disposal batteries

To remove the disposable batteries, see battery install section.



Specifications are subject to change without notice.
2020 © Philips and the Philips Shield Emblem are registered trademarks of Koninklijke Philips N.V. and are used under license. This product has been manufactured by and is sold under the responsibility of MMD Hong Kong Holding Limited or one of its affiliates, and MMD Hong Kong Holding Limited is the warrantor in relation to this product.

TAR3505_12_UM_V1.0

