

# Quick start guide



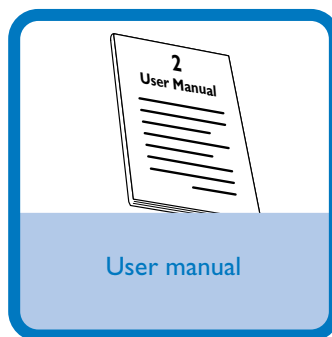
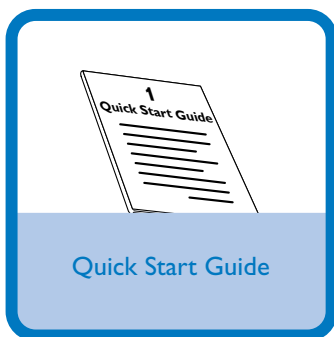
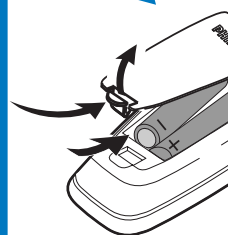
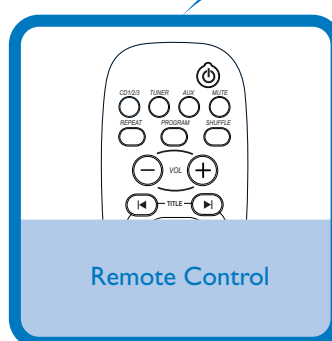
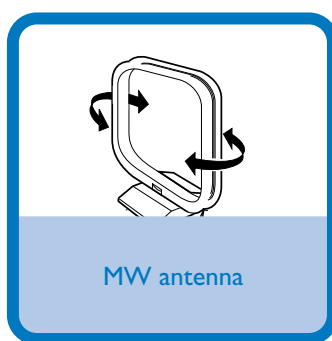
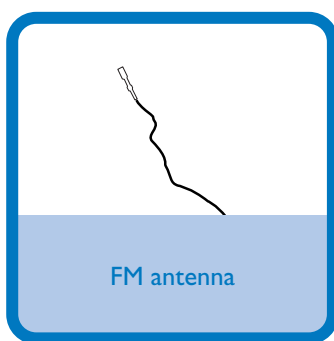
Step A *Connect*

Step B *Setup*

Step C *Enjoy*

## What's in the Box?

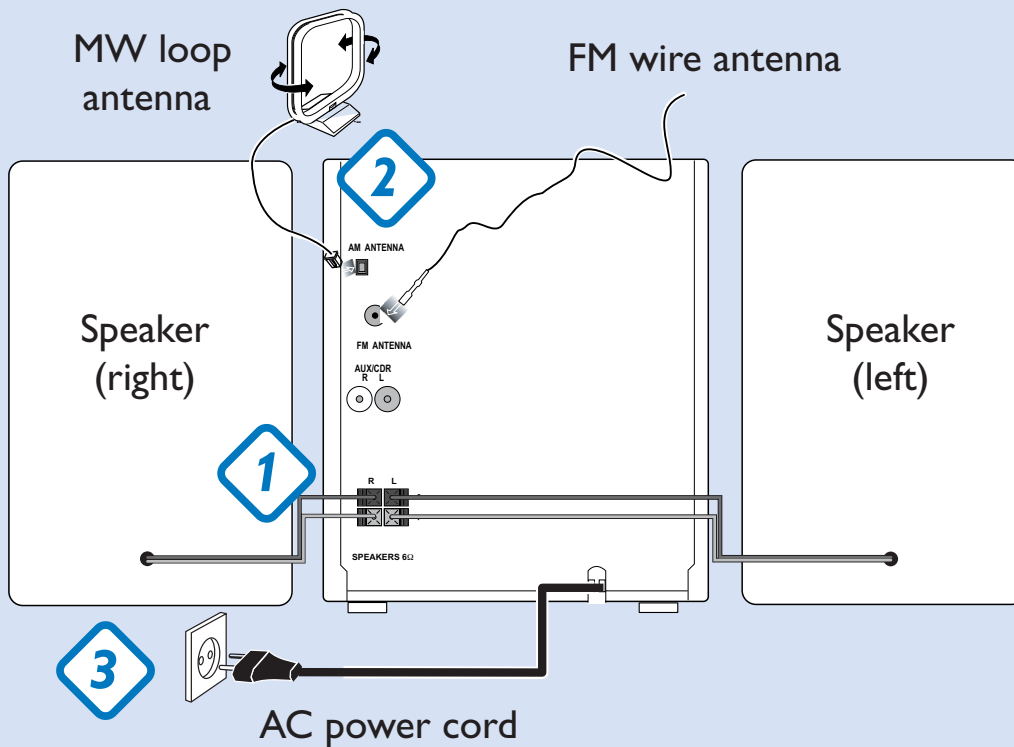
You should find these items upon opening the box.



## Step A *Connect*

- 1 Connect the speaker cables.
- 2 Connect the MW and FM antennas.
- 3 Connect the power cable of the system.

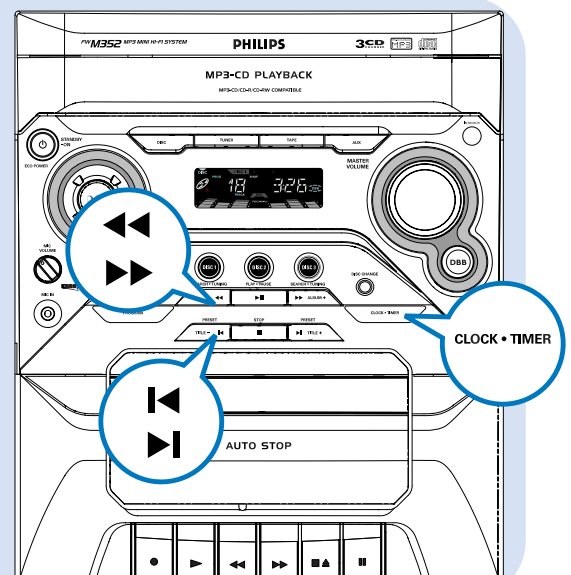
**Tip**  
See the User Manual for how to connect other equipment to this system.



## Step B *Setup*

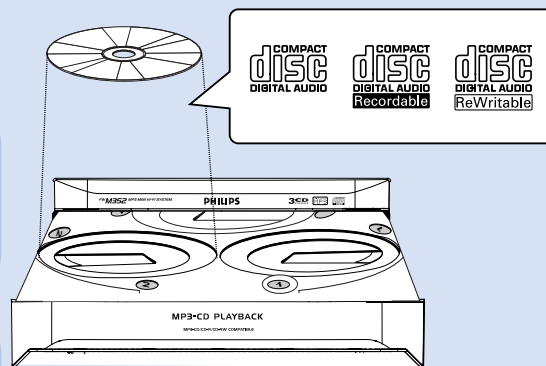
### Setting the clock

- 1 In standby or view clock mode, press **CLOCK•TIMER** once. In other source mode, press **CLOCK•TIMER** twice.
- 2 Press **◀** or **▶** repeatedly to set the hour.
- 3 Press **◀** or **▶** repeatedly to set the minute.
- 4 Press **CLOCK•TIMER** again to store the setting.



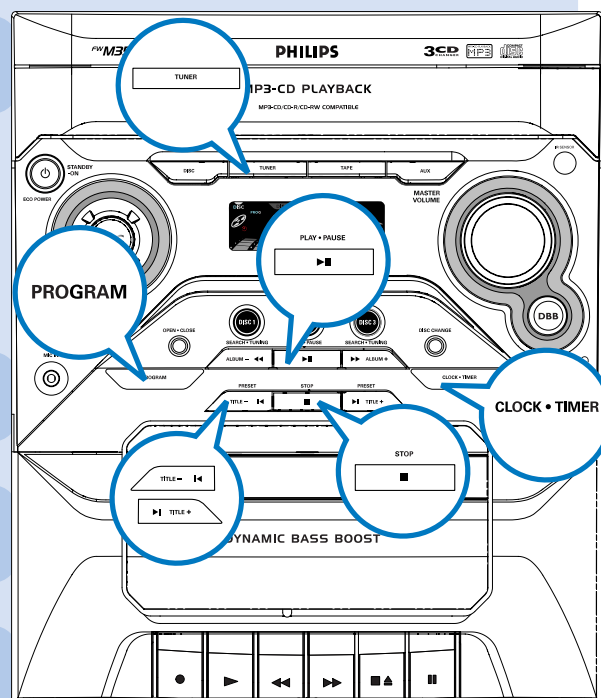
## Playing a disc

- 1 Press **OPEN•CLOSE** to open the disc tray and load up to two discs on the individual disc trays. To load the third disc, press **DISC CHANGE**.  
→ Make sure the label side of each loaded disc is facing up.
- 2 Press **OPEN•CLOSE** again to close the disc tray.
- 3 Use **DSC 1/2/3** (or **CD 1/2/3** on the remote control) to select a disc for playback and then press **PLAY•PAUSE ▶ II** to start playback.
- 4 To stop playback, press **STOP ■**.



## Programming and tuning to radio stations

- 1 Press **TUNER** to select the tuner source.
- 2 Press **PROGRAM** for more than two seconds to program all available stations in order of waveband.
- 3 Press **◀** or **▶** until the desired preset station is displayed.



### Tip

Detailed playback features and additional functions are described in the accompany owner's manual.

