



Philips  
Cordless phone

1.6" display/amber backlight  
2 handsets

D1302B

## Keep it simple

The Philips D130 Cordless Phone packs smart and essential functions in a fresh and engaging design. With excellent sound reproduction and intuitive features, just plug & play to enjoy all your conversations with great clarity and ease.

### Nice and simple

- Ultimate convenience through easy setup
- Textured back cover for non-slip grip
- Easy to read 1.6" (4.1 cm) display with backlight
- Up to 10 hours' talk time on a single charge
- Caller ID – so you always know who is calling\*

### Crystal clear sound

- The Parametric Equaliser delivers pure and clear sound
- Automatic Volume Control offsets unwanted volume variation
- Optimised antenna layout for great reception in any room
- Advanced sound testing and tuning for superb voice quality

### Eco-conscious product

- Low radiation and power consumption

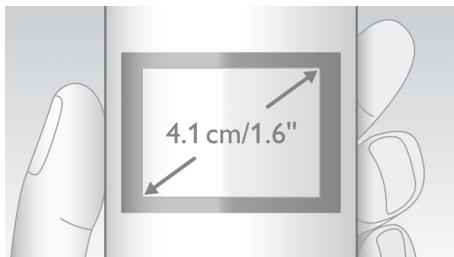
# PHILIPS

Cordless phone  
1.6" display/amber backlight 2 handsets

D1302B/05

# Highlights

## 4.1 cm (1.6") display



Easy to read 1.6" (4.1 cm) display with backlight

## Advanced sound testing

We test the sound quality of our DECT phones the same way as high-end headphone manufacturers do. Using an advanced ear simulator, we can accurately re-create the way people actually hear. This helps our acoustic engineers to measure and fine-tune things like frequency response, distortion and overall hearing perception, to create perfect voice reproduction.

## Automatic Volume Control



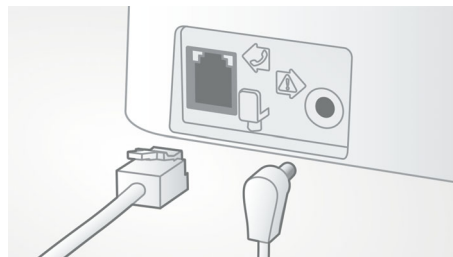
Automatic Volume Control offsets variations in sound signal, which can be caused by distance, signal strength or the caller's phone — so what you hear always remains consistent. Reducing the audio amplification for strong signals, and increasing it for weak ones, means you can enjoy a smooth conversation without unwanted sound volume variation.

## Caller ID\*



Sometimes it's good to know who's calling before you answer. And our Caller ID lets you keep track of who's on the other end of the line.

## Easy setup



Ultimate convenience through easy set up. Simplified installation - Plug and Play product

## Eco-conscious product



Philips phones are energy efficient and designed to be respectful to the environment.

## Non-slip grip



The rear of the handset is treated with a special texture for added comfort and better grip.

## Optimised antenna layout



Our optimised antenna layout ensures strong and stable reception, even in areas of the house where cordless transmission is difficult. Now you can take a call wherever you are in the house, and enjoy a long, uninterrupted conversation even as you walk around.

## Parametric Equaliser



Our telephones use parametric equalisation in the digital sound processing to fine tune the sound response back to the intended linear frequency response curve, delivering sound that is pure and clear, for each conversation.

## Up to 10 hours' talk time

Up to 10 hours' talk time on a single charge

# Specifications

## Convenience

- Menu structure in the handset: List Menu
- Signal strength indicator: 3-bar indicator
- Battery level indicator: 3-bar battery icon
- Intercom — multiple handsets
- Date/Time display
- Programmable hot keys: Key 1 and 2
- Call Management: Call Waiting\*, Caller ID\*, Microphone mute, Missed Calls, Received Calls, Dialed calls
- Keypad lock
- Key tone on/off
- Auto hang up
- Multi-handset capability: Up to 4
- Number of keys: 20
- Base Station keys: Paging key
- Up to 10 hrs' talk time
- Charge time: 8 hours
- Line cord length: 1.5 m
- Power cord length: 1.5 m
- Range: Open field <300 m; indoor <50 m
- Non-slip grip: Triangular pattern
- Up to 200 hrs standby time

## Sound

- Volume control on handset
- Ringtones on handset: 10 standard
- HQ-Sound

## Picture/Display

- Display size: 4.1 cm/1.6"
- Display type: 12 digits (Alphanumeric) + hard icons

- Backlight: Yes
- Backlight colour: Amber

## Memory Capacity

- Phonebook: 50 names and numbers
- Redial List Capacity: Last 10 numbers
- Call log entries: 20 entries
- Phonebook store in the base

## Power

- Battery capacity: 300 mAh
- Battery type: AAA NiMH Rechargeable
- Mains power: AC 100-240 V ~50/60 Hz

## Security

- Transmission encryption: Yes

## Network Features

- Compatible: GAP

## SAR Value

- Philips handsets: <0.1 W/kg

## Packaging dimensions

- Packaging dimensions (W x H x D):  
18.4 x 13.5 x 8.4 cm
- Net weight: 0.4794 kg
- Gross weight: 0.5782 kg
- Tare weight: 0.0988 kg
- Number of products included: 1
- Packaging type: Carton
- Type of shelf placement: Laying
- EAN: 48 95185 61061 0



Issue date 2015-07-19

Version: 2.0.5

12 NC: 8670 001 26795  
EAN: 48 95185 61061 0

© 2015 Koninklijke Philips N.V.  
All Rights reserved.

Specifications are subject to change without notice.  
Trademarks are the property of Koninklijke Philips N.V.  
or their respective owners.

[www.philips.com](http://www.philips.com)

\* \*\*This feature requires additional subscription to Caller ID service.  
Please check with your local network operator for details.