

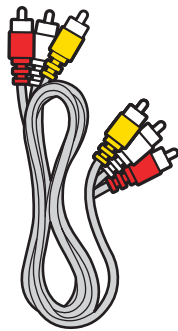
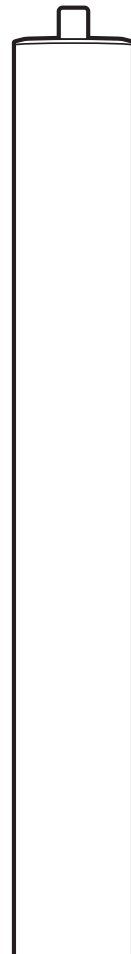
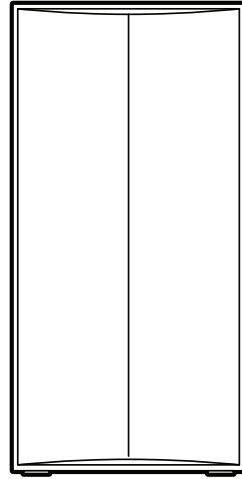
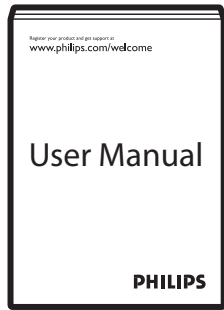
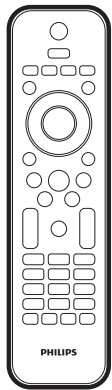
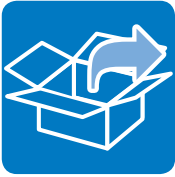
Register your product and get support at
www.philips.com/welcome

HTS5540



Quick Start

PHILIPS



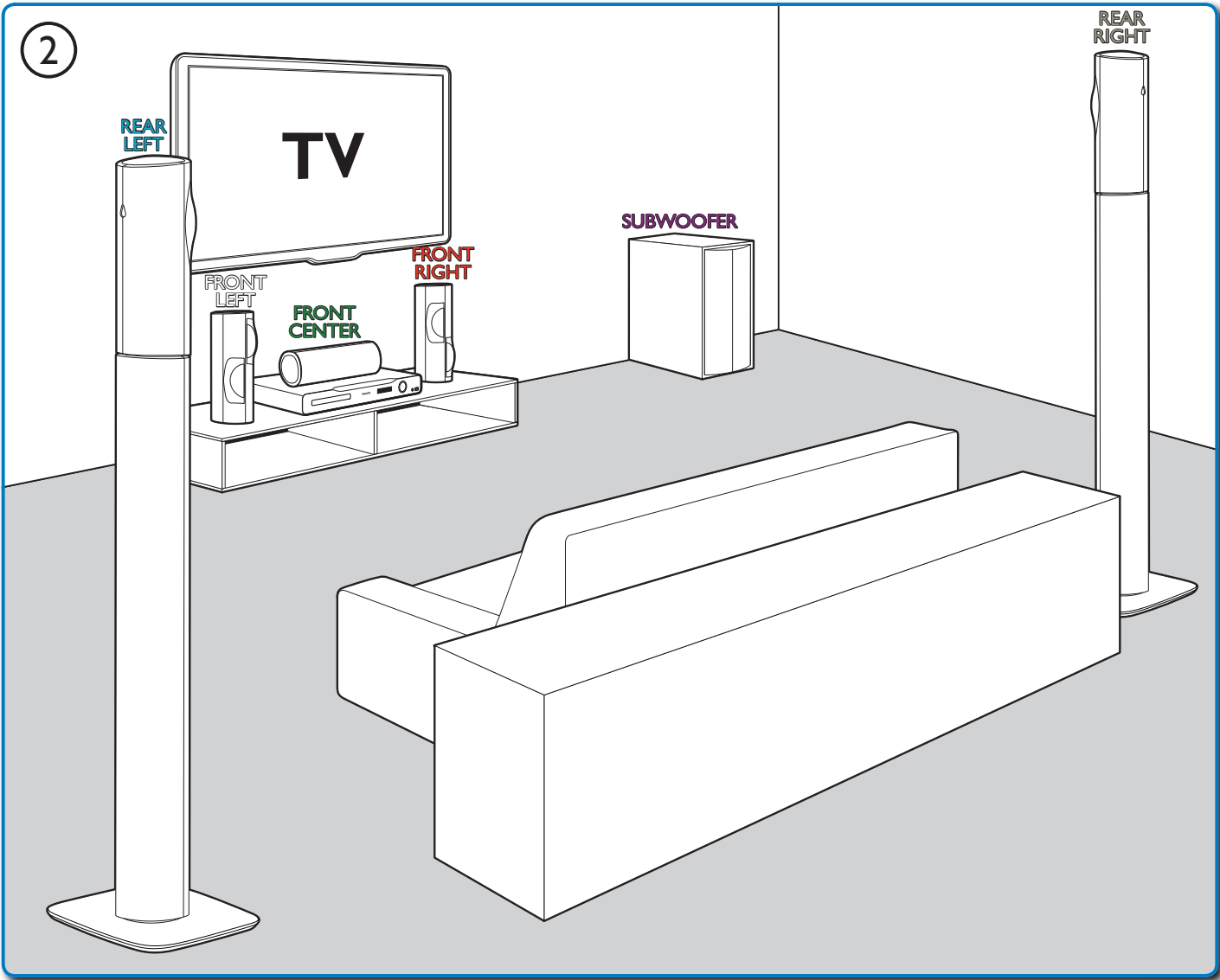
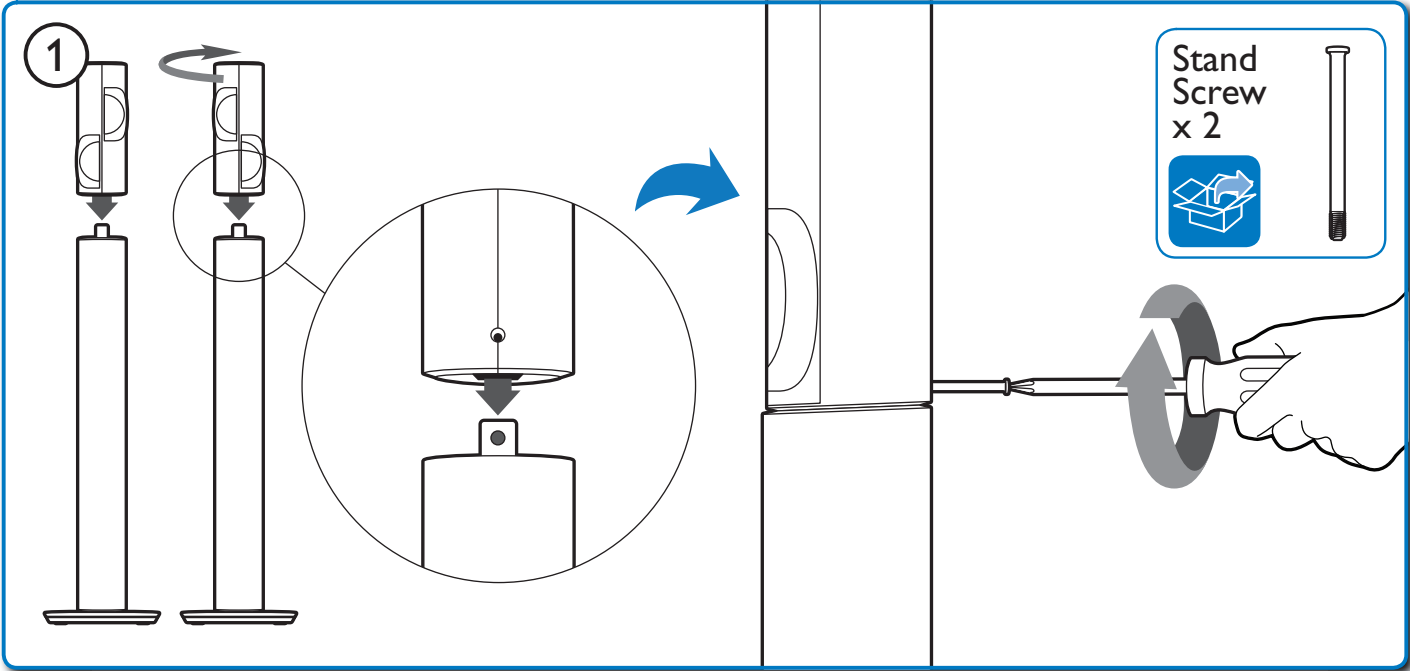
Audio/Video



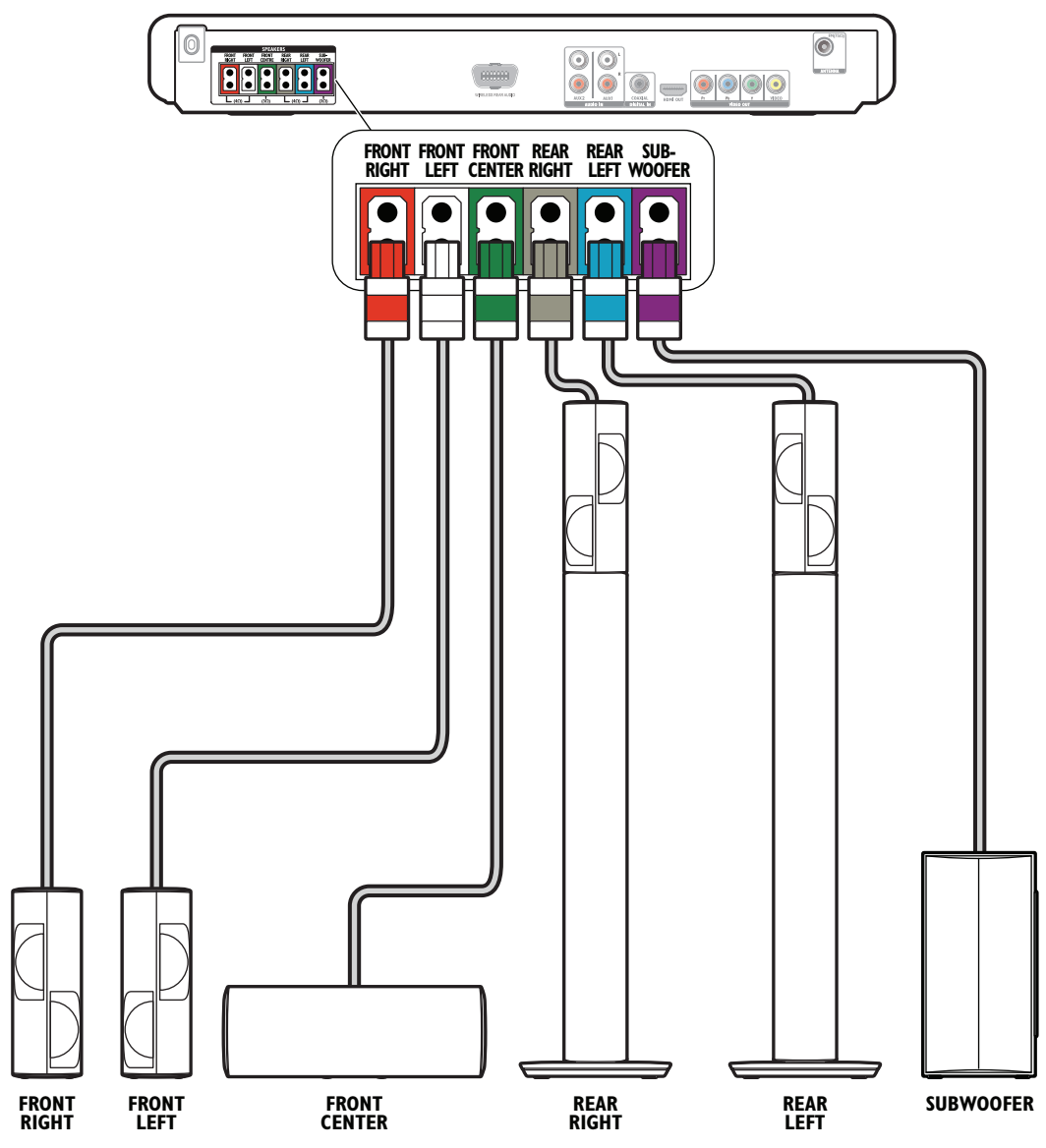
FM Antenna



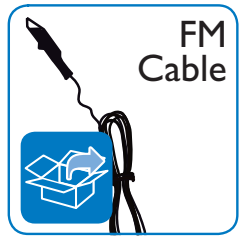
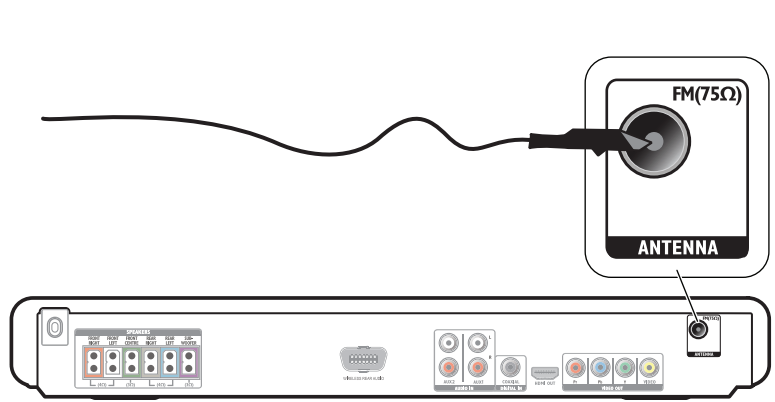
1

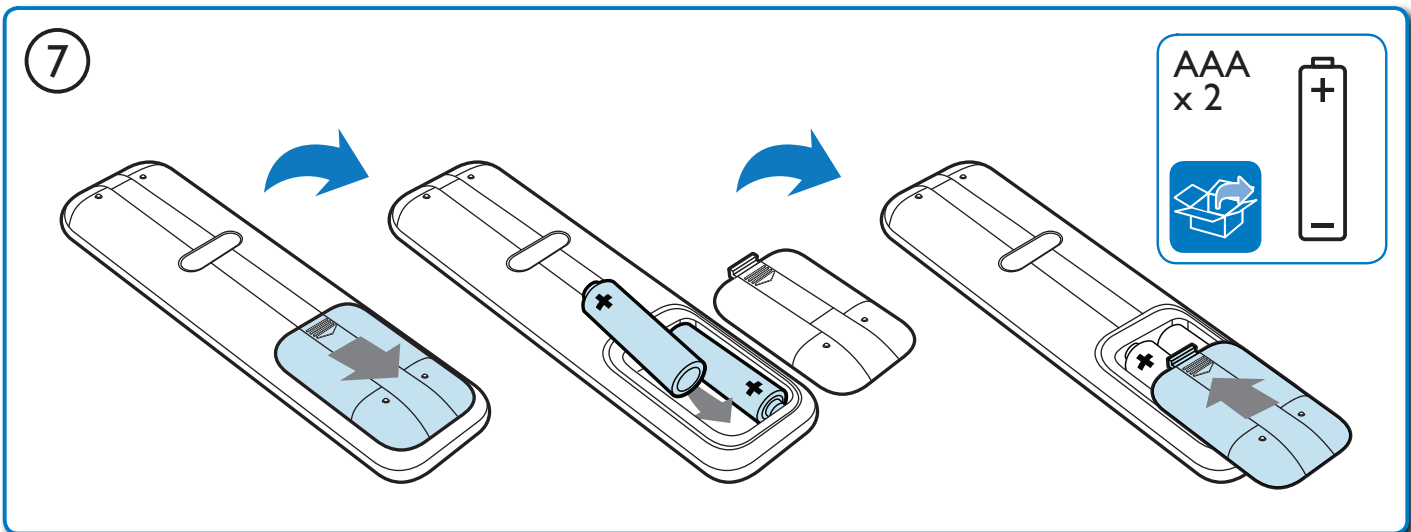
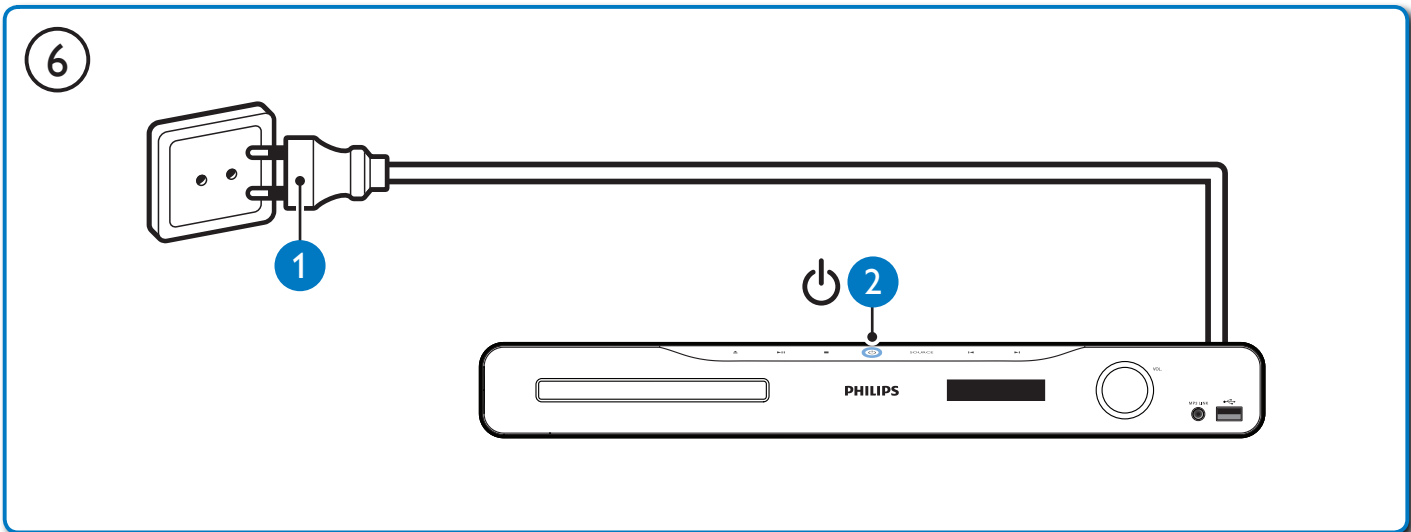
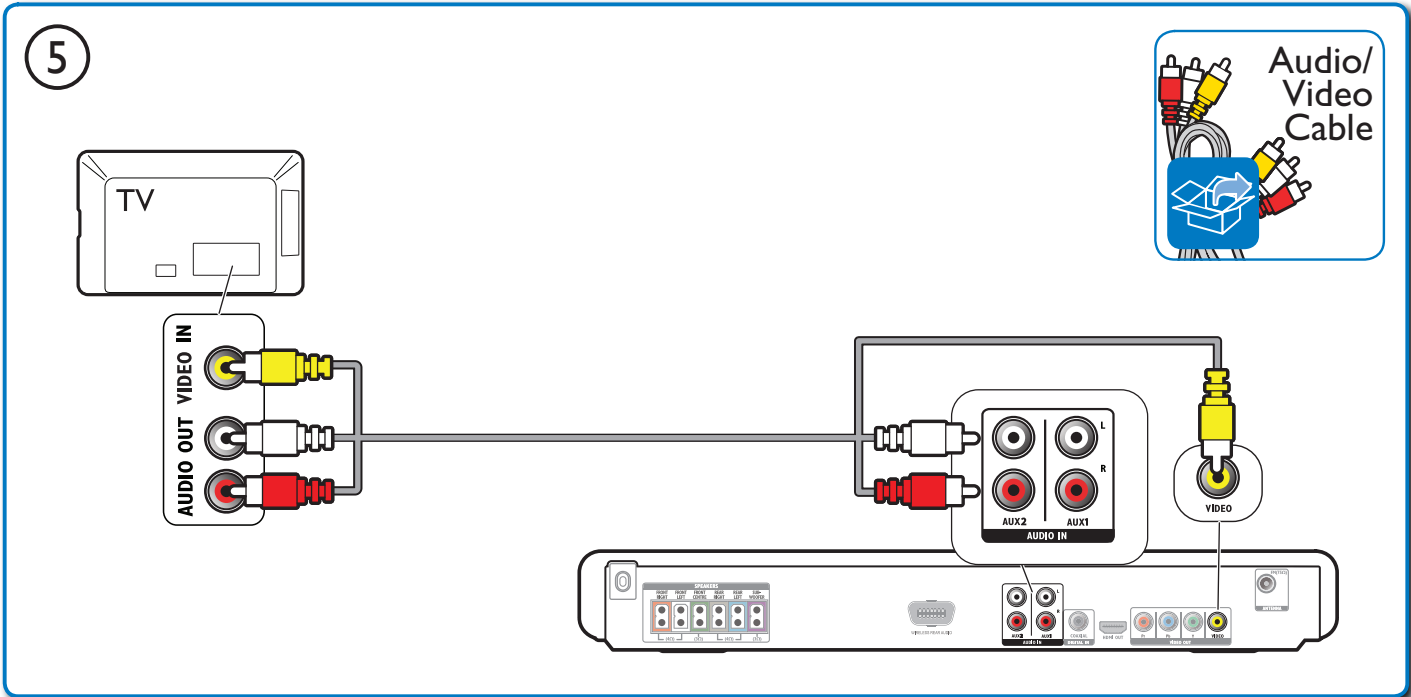


3



4





2

1

SOURCE

TV

AV

HTS

2

3

HOME THEATER

5

6

HOME THEATER

General Setup

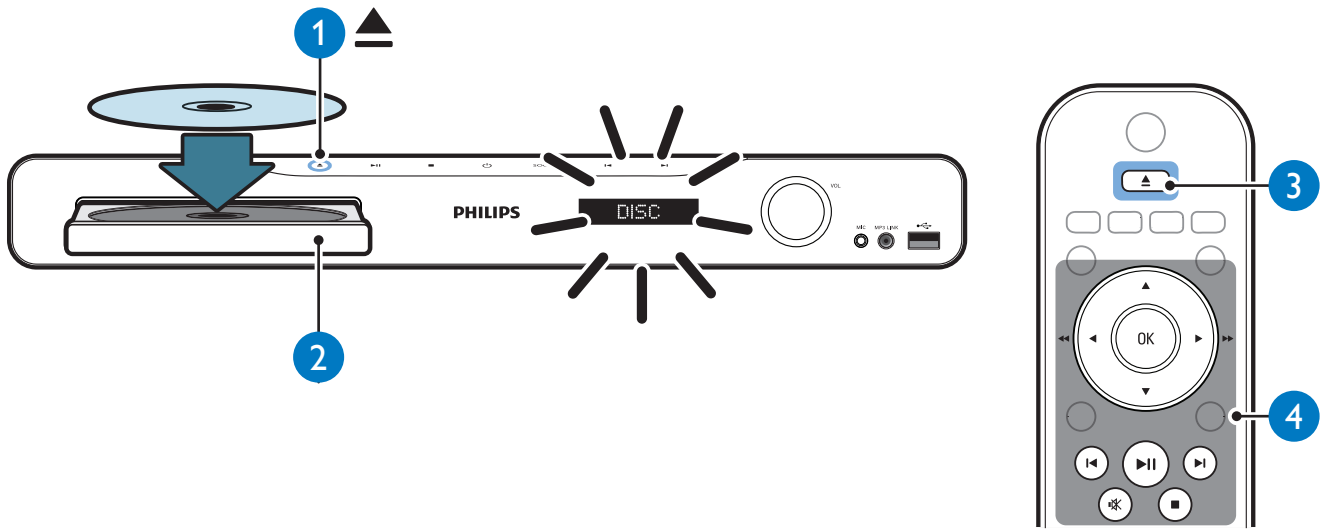
- Easylink Setup
- Disc Lock
- Display Dim
- OSD Language
- Screen Saver
- Sleep Timer
- DivX(R) VOD Code

General Setup

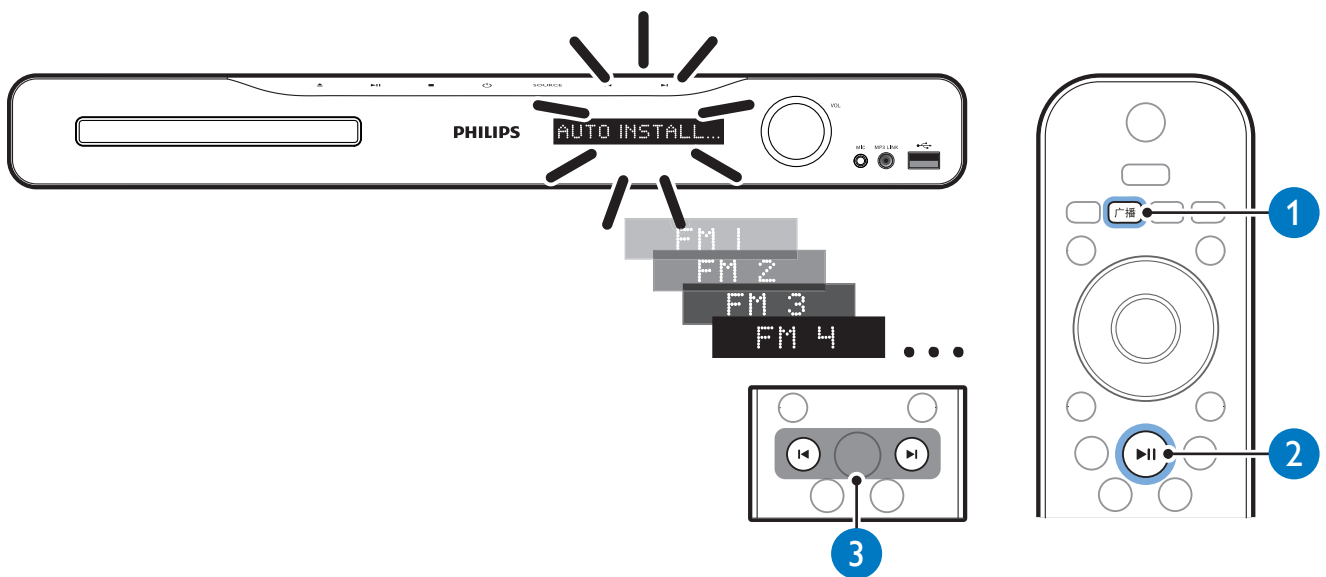
- Easylink Setup
- Disc Lock
- Display Dim
- OSD Language
 - Auto
 - English
 - 简体中文
- Screen Saver
- Sleep Timer
- DivX(R) VOD Code

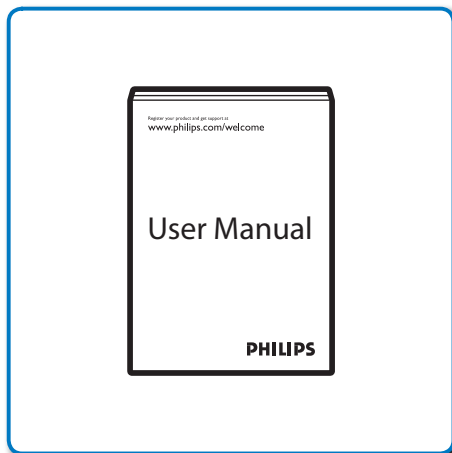
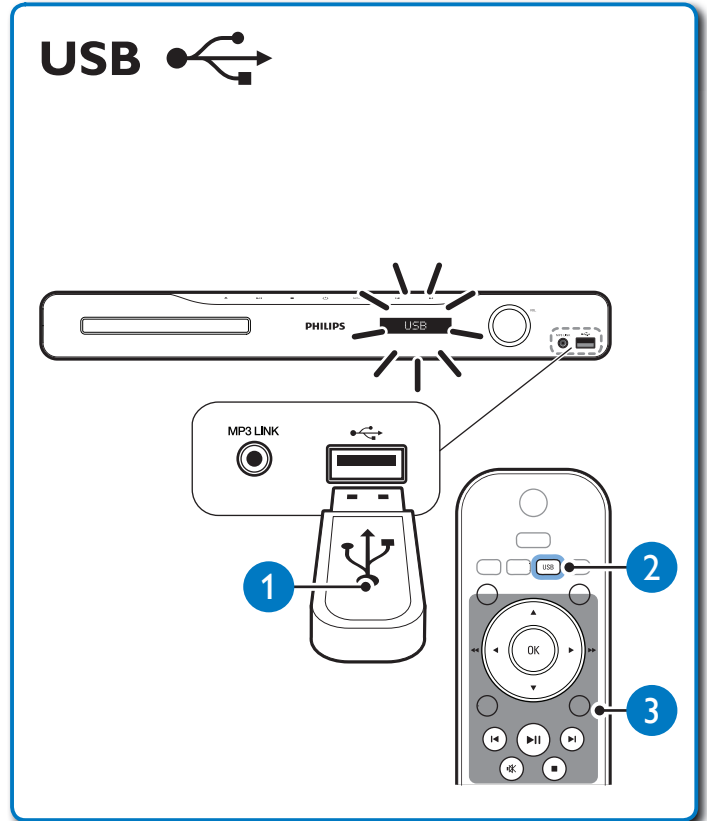
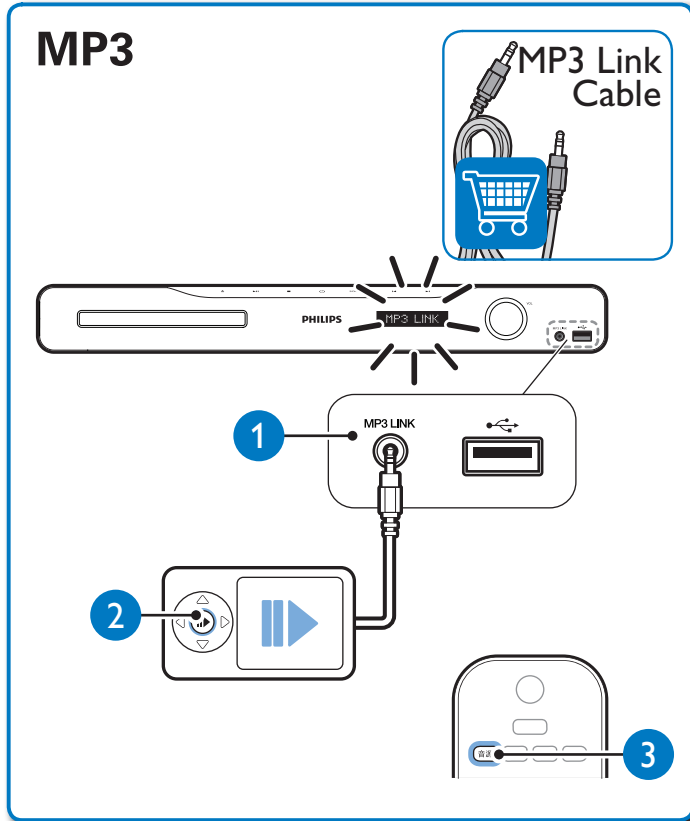
3

DISC



FM





Specifications are subject to change without notice
Trademarks are the property of Koninklijke Philips Electronics N.V.
or their respective owners
2010 © Koninklijke Philips Electronics N.V. All rights reserved.
sgttcs_1002/93_v1

Be responsible
Respect copyrights

