



Philips  
Cordless phone

**D150**

1.6" display/ amber backlight  
Speakerphone

**D1501W**



## Keep it simple

Designed for complete simplicity, this phone gives you all the benefits of long-lasting ergonomic comfort, and great sound reproduction. A true plug & play device with an intuitive menu, it is simplicity itself.

### Nice and simple

- Ultimate convenience through easy setup
- Easy to read 4.1 cm (1.6") display with backlight
- Programmable hot keys for quick dial
- Menu in multiple local languages
- Textured back cover for non-slip grip
- Up to 16 hours talk time on a single charge
- Caller ID – so you always know who is calling\*

### Crystal clear sound

- Advanced sound testing & tuning for superb voice quality
- Parametric Equalizer delivers pure and clear sound
- Automatic Volume Control offsets unwanted volume variation
- Optimized antenna layout for great reception in any room

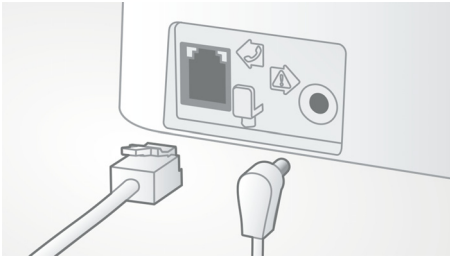
### Eco-conscious product

- Low radiation and power consumption

**PHILIPS**

# Highlights

## Easy setup



Ultimate convenience through easy set up. Simplified installation - Plug & Play product

## Optimized antenna layout



Our optimized antenna layout ensures strong and stable reception – even in areas of the house where cordless transmission is difficult. Now you can take a call wherever you are in the house, and enjoy a long, uninterrupted conversation even as you walk around.

## Parametric Equalizer



Our telephones use parametric equalization in the digital sound processing to fine-tune the sound response back to the intended linear frequency response curve, delivering sound that is pure and clear, for each conversation.

## Automatic Volume Control



Automatic Volume Control offsets variations in sound signal, which can be caused by distance, signal strength or the caller's phone - so what you hear always remains consistent. Reducing the audio amplification for strong signals, and increasing it for weak ones, it means you can enjoy a smooth conversation without unwanted sound volume variation.

## Eco-conscious product



Philips phones are energy efficient and designed to be respectful to the environment.

## Menu in local languages



Enjoy easy set-up, navigation and control with intuitive menu available in local languages.

## Programmable hot keys



Now calling the people you care about most is easier than ever. With simple one-touch dialing, you will never have to search for their number again. You can program up to 2 keys for instant calling.

## Non-slip grip



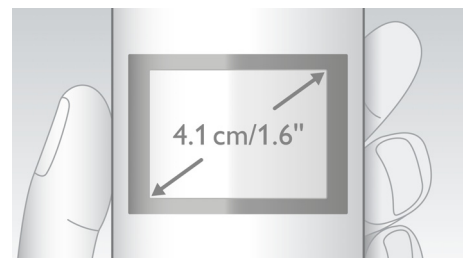
The rear of the handset is treated with a special texture for added comfort and better grip.

## Up to 16 hours talk time



Up to 16 hours talk time on a single charge

## 4.1cm (1.6") display



Easy to read 4.1 cm (1.6") display with backlight

# Specifications

## Sound

- Volume control on handset
- Ringtones on handset: 10 standard

## Picture/Display

- Display size: 4.1 cm / 1.6"
- Display type: 1-line dot matrix + 2 line icons
- Backlight: Yes
- Backlight color: Amber

## Convenience

- Menu structure in the handset: List Menu
- Signal strength indicator: 3- bar indicator
- Battery level indicator: 3- bar battery icon
- Date / Time display
- Base Station keys: Paging key
- Battery charge indication
- Signal strength indication
- Programmable hot keys: Key 1 and 2
- Auto hang up
- Key tone on/off
- Call Management: Call Waiting\*, Caller ID\*, Microphone mute, Missed Calls, Received Calls
- Multi base capability: 1
- Multi handset capability: Up to 4
- Intercom - multiple handsets
- Line cord length: 1.8m
- Power cord length: 1.8m
- Charge time: 8 hours
- Up to 16 hrs talk time
- Range: Open field <300m; indoor <50m
- Up to 180 hrs standby time
- Keypad lock
- Non-slip grip: Circular texture

## Memory Capacity

- Phonebook: 50 names and numbers
- Redial List Capacity: 10 entries
- Call log entries: 20 entries
- Phonebook store in the base

## Power

- Battery capacity: 550 mAh
- Battery type: AAA NiMH Rechargeable
- Mains power: AC 100-240V ~50/60Hz
- Power Consumption: <0.7 W

## Security

- Transmission encryption : Yes

## Network Features

- Compatible: GAP

## SAR Value

- Philips handsets: <0.1 W/kg

## Packaging dimensions

- EAN: 87 12581 69034 2
- Type of shelf placement: Laying
- Number of products included: 1
- Packaging type: Carton
- Packaging dimensions (W x H x D):  
18.4 x 13.5 x 5.5 cm
- Gross weight: 0.389 kg
- Nett weight: 0.306 kg
- Tare weight: 0.083 kg



Issue date 2015-01-23

Version: 3.1.3

12 NC: 8670 001 03586  
EAN: 87 12581 69034 2

© 2015 Koninklijke Philips N.V.  
All Rights reserved.

Specifications are subject to change without notice.  
Trademarks are the property of Koninklijke Philips N.V.  
or their respective owners.

[www.philips.com](http://www.philips.com)