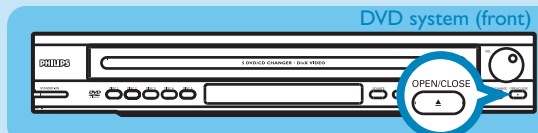


# 3 Enjoy

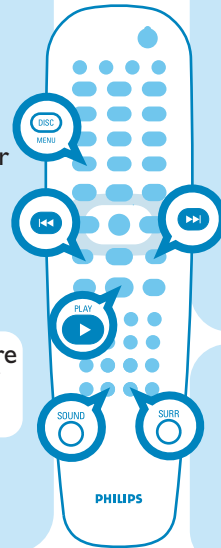
## Play DVD



- Press **OPEN/CLOSE** on the front panel to open the disc tray
- Place DVD in any of the 5 trays with the label facing up
- Press **OPEN/CLOSE** again
- Press **UP** , **DOWN** , **RIGHT** or **LEFT** to scroll through the options in the DVD menu
- Press **PLAY** on the option you want.
- To stop press **STOP**

**Tip** Press **PLAY** to resume from where you stopped or press **STOP** and **PLAY** to start from the beginning of the title

- Press **DISC MENU** to go back to the DVD menu



## Listen to Radio



- Press **SOURCE** on the front panel to select TUNER mode.
- Press **PLAY/PAUSE** on the front panel or **PLAY** to enter into auto install mode.

**Tip** This feature is only available for first time setup, refer to user manual if you wish to program radio stations again or for manual programming



- Once completed, the last tuned radio station will play.

## Experience Surround Sound

- 1 Press **SURR** to switch between Stereo and Multi-channel
- 2 Press **SOUND** for either Concert, Drama, Action or Sci-fi preset digital sound effects

## Troubleshooting

For more troubleshooting tips, see the user manual

### Problem

No power

### Tip

- Check if the AC power cord is properly connected.
- Press the STANDBY-ON on the front of the DVD system to turn on the power.

No picture

- Press DISC 1-2-3-4-5 on remote control.
- Check connection to TV and ensure the plugs are firmly in place.

No sound or distorted sound

- Adjust the volume and check the speaker connections and settings.
- Check audio cable connections and press SOURCE to select correct input source.

Remote control does not work

- Check that the batteries are loaded correctly or replace the batteries with new ones.
- Select the source (DISC or TUNER, for example) before pressing the function button.
- Point the remote control directly toward the IR sensor.

## Need help?

### User Manual

See the user manual that came with your home theatre system.

### Online

Go to [www.philips.com/support](http://www.philips.com/support)



2005 © Koninklijke Philips N.V.  
All rights reserved.  
12 NC 31 39 246 17472  
[www.philips.com](http://www.philips.com)

# Quick Start Guide



- 1 Connect
- 2 Setup
- 3 Enjoy

## What's in the Box



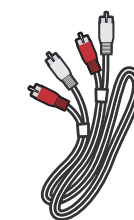
DVD system



Centre speaker



Quick start guide



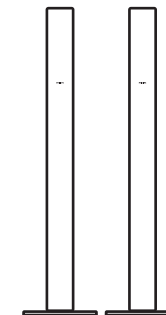
Audio cables (red & white plugs)



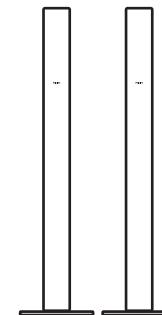
FM wire antenna



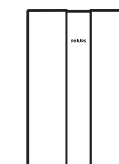
AM/MW loop antenna



Front speakers (left & right)



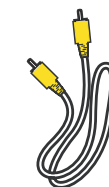
Rear speakers (left & right)



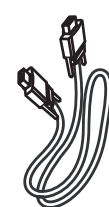
Subwoofer



Remote control and 2 batteries



Video cables (yellow plug)



Inter-connect cable

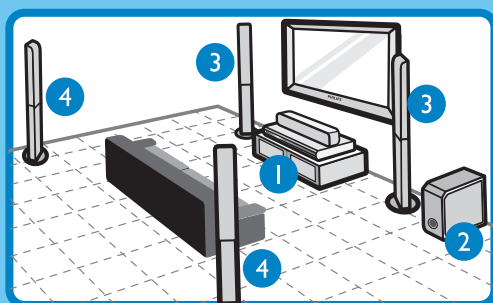


User manual

**PHILIPS**

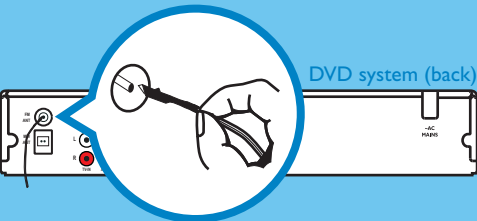
# 1 Connect

## A Position speakers & subwoofer

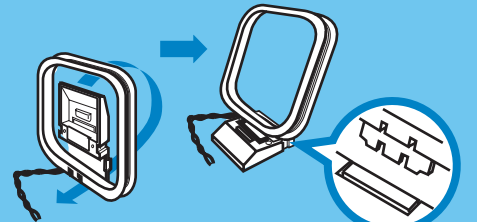


- 1 Place centre speaker on or close to the TV
- 2 Place subwoofer on the floor
- 3 Place front speakers equal distance from the TV and angle them 45 degree to the listener
- 4 Place rear speakers facing the listener, equal distance on the left and right

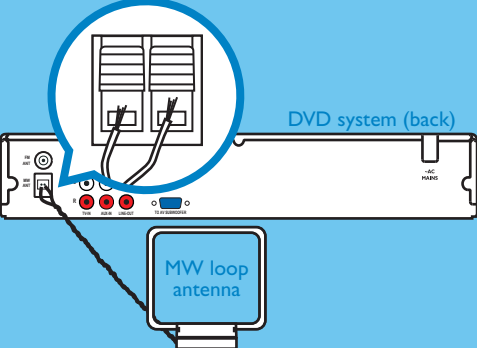
## B Fix antennas



- Connect the FM antenna to the FM socket, extend the antenna and fix it on the wall

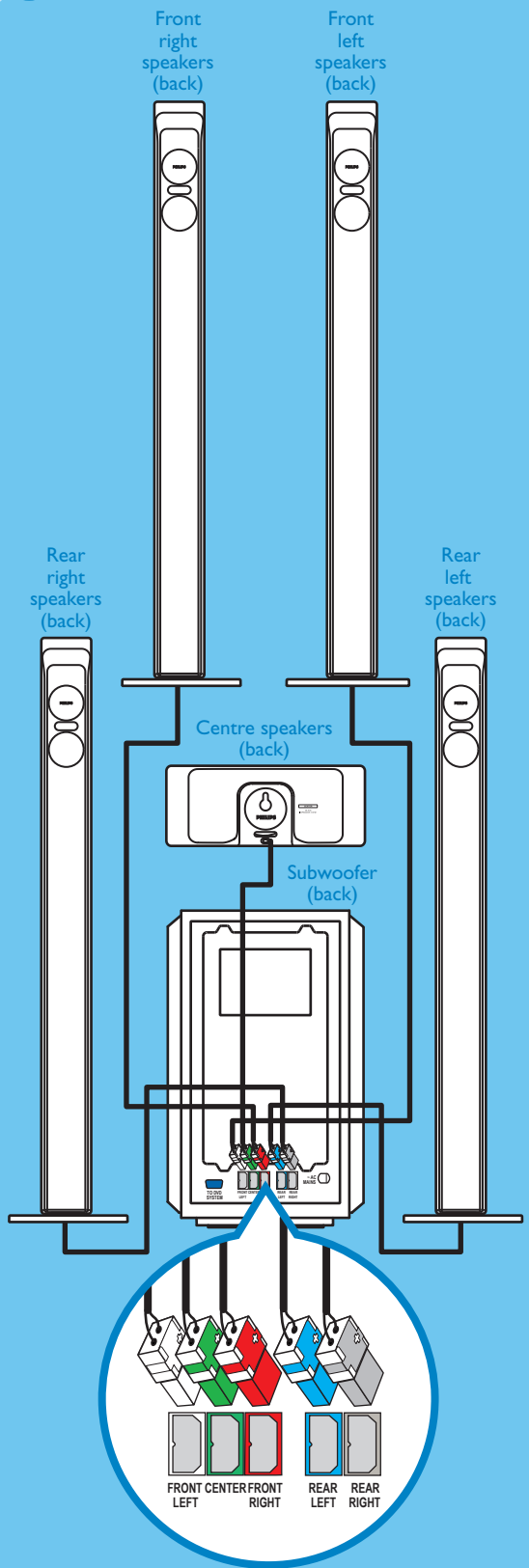


- Unfold the AM/ MW loop antenna and fix the claw into the slot



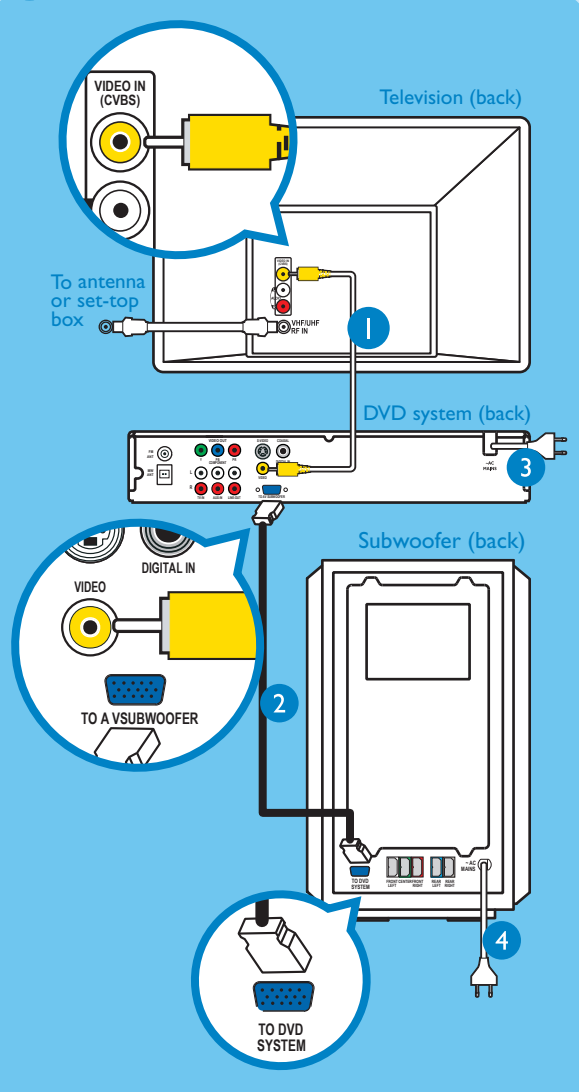
- Push back tab and insert each wire into slot

## C Connect speakers to subwoofer



Connect the various coloured plugs from the speakers to the same colour socket on the rear of the subwoofer

## D Connect DVD system to TV and subwoofer



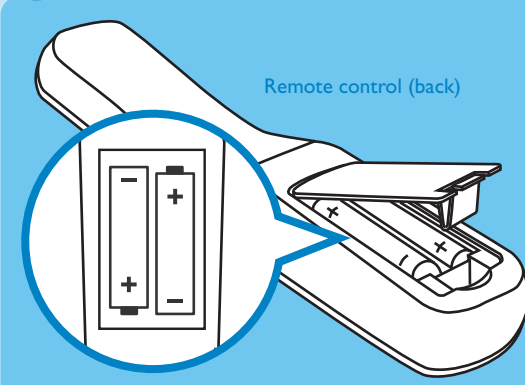
- 1 Use the yellow Video cable to connect the yellow CVBS socket on the rear of the DVD system and the yellow VIDEO IN jack at the rear of the TV
- 2 Use the inter-connect cable to connect the TO AV SUBWOOFER socket on the rear of the DVD system and the TO DVD SYSTEM on the rear of the subwoofer
- 3 Plug in the power cable of the DVD system to an AC outlet
- 4 Plug in the power cable of the subwoofer to an AC outlet

**Tip** To connect other devices or audio from TV to the DVD system, refer to the user manual



# 2 Setup

## A Insert batteries in remote control



- Remove batteries compartment cover
- Insert the provided batteries in the remote control. Take note of where the positive and negative ends should go
- Replace the batteries compartment cover

## B Find correct viewing channel

- Press **STANDBY-ON** on the DVD system's remote control
- Press **DISC 1-2-3-4-5** on the remote control until 'LOAD X' appears on the front panel
- Switch on the TV
- Press '0' on the TV's remote control, then repeatedly press the Channel Down button until you see the DVD background screen. This is the correct viewing channel for the home theatre system

**Tip** For some TVs, to find the correct viewing channel, you can keep pressing the AV or the SELECT buttons. If still unable to find the correct viewing channel, check the connections again or check your TV's user manual

