



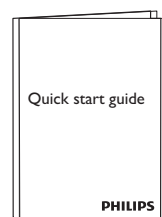
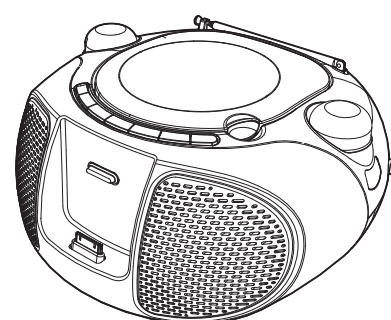
Quick start guide

PHILIPS

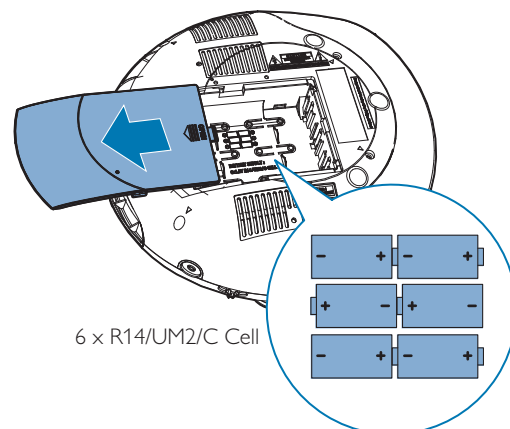
To get the detailed instructions for use, visit www.philips.com/Welcome.



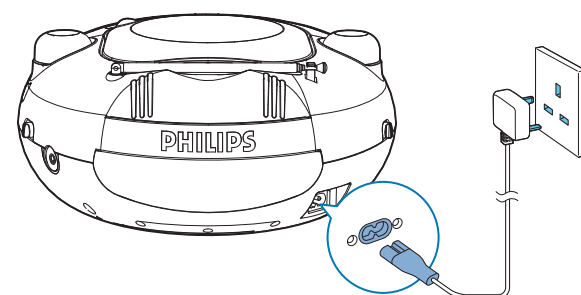
What's in the box



Connect power



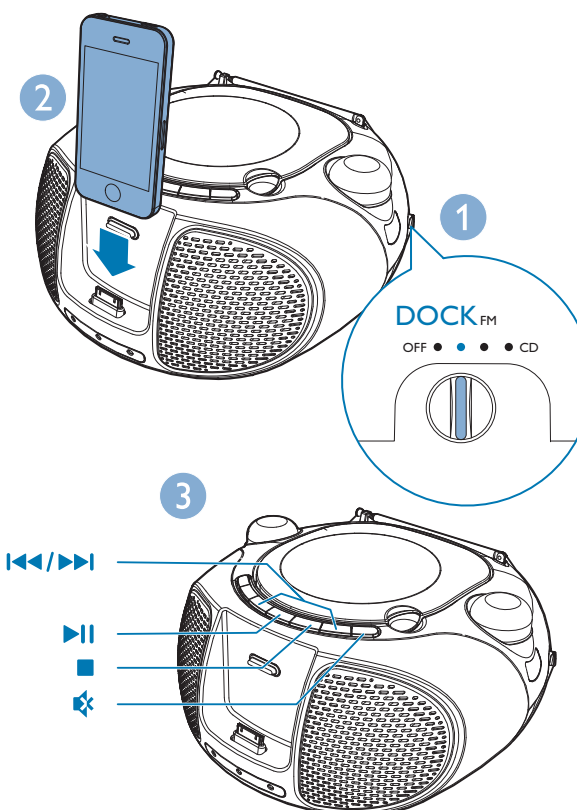
6 x R14/UM2/C Cell



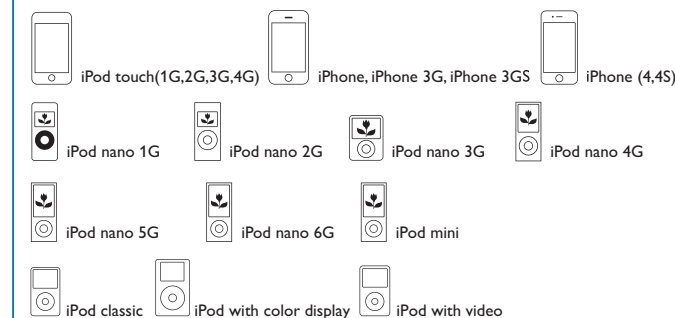
To play with the device, you can use either alkaline battery (R14) or AC power.



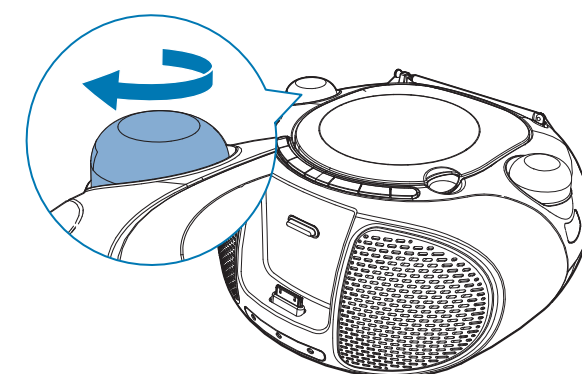
Listen to audio from iPod/iPhone



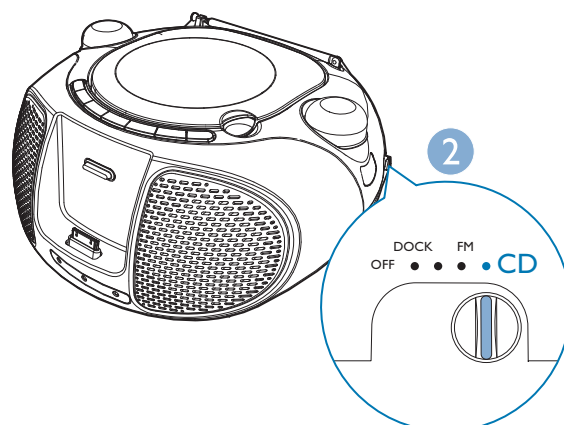
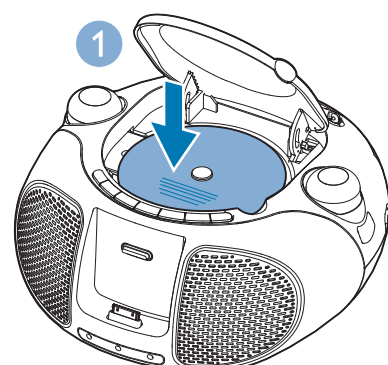
Your iPod/iPhone can only be charged in **Dock** or **MP3 link** mode, not in **FM** or **CD** mode.



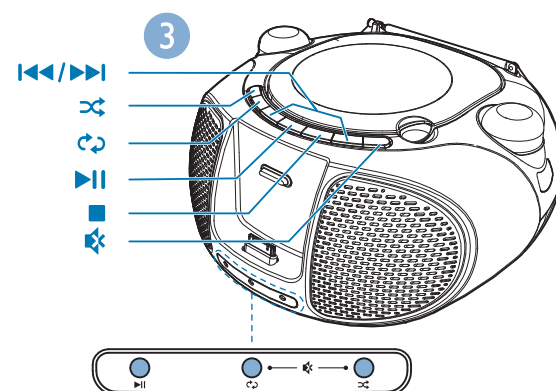
Adjust volume



Play disk



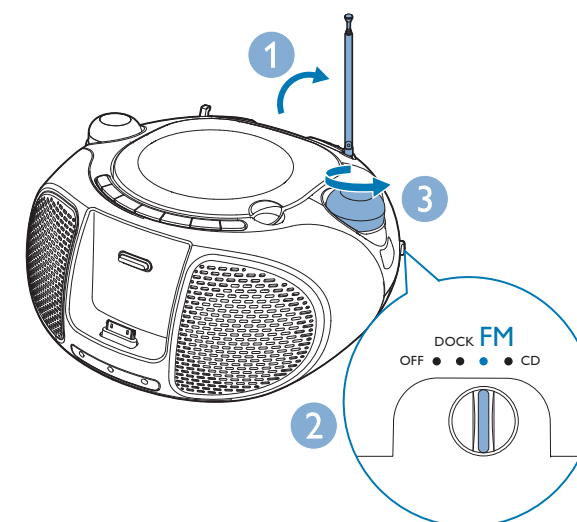
- ⏮/⏭ : Skip to the previous or next track. Search within play.
- 🔀 : Play tracks randomly.
- 🔄 : Play a track or tracks repeatedly.
- ⏸ : Pause or start play.
- : Stop play.
- 🔊 : Mute or resume sound.



⏸/🔄/🔀 : LED indicators (for CD mode only).

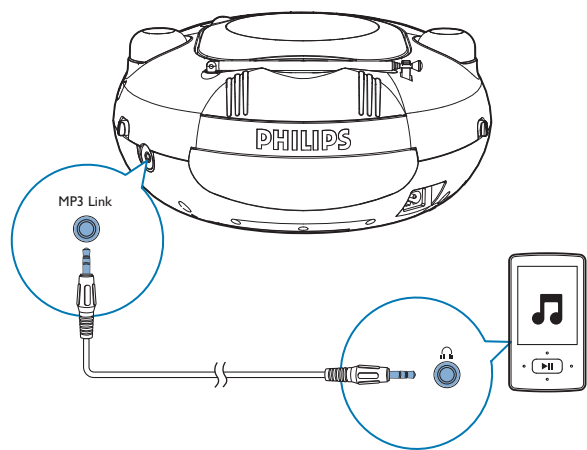


Listen to FM radio





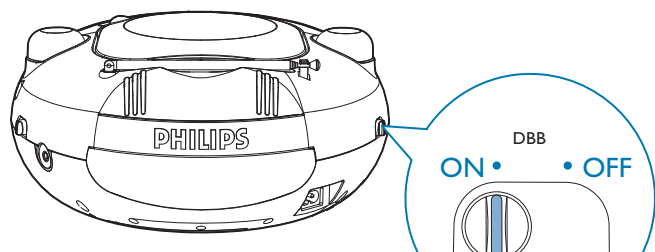
Listen to an external audio device



When the device is turned on and an MP3 link cable is connected, it switches to MP3 link mode automatically.

DBB

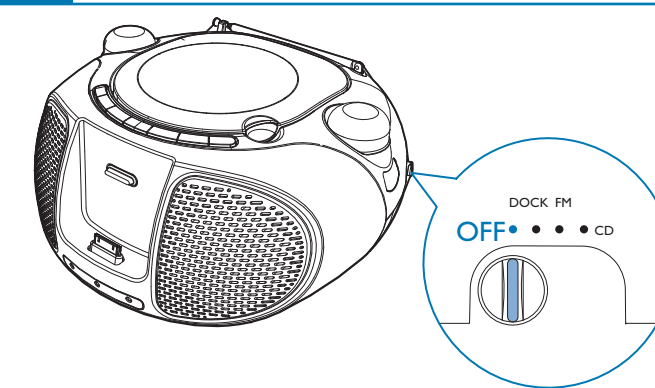
Turn DBB on/off



To turn dynamic bass enhancement on or off, switch **DBB** to **ON** or **OFF**.

Power icon

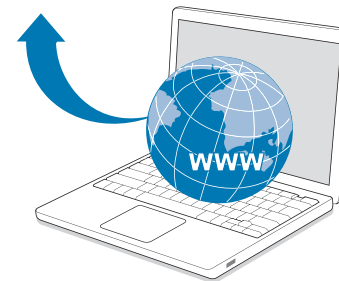
Turn off



For online help



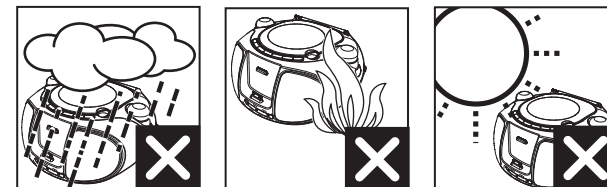
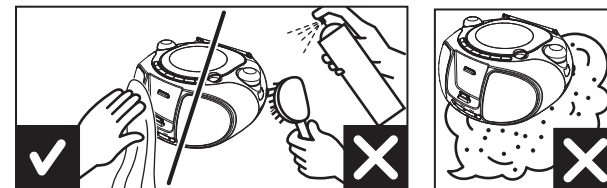
www.philips.com/support



Need help? Visit www.philips.com/support.



Warning and maintenance



Important

- Read these instructions.
- Follow all instructions.
- Do not block any ventilation openings. Install in accordance with the manufacturer's instructions.
- Do not install near any heat sources such as radiators, heat registers, stoves, or other apparatus (including amplifiers) that produce heat.
- Protect the power cord from being walked on or pinched, particularly at plugs, convenience receptacles, and the point where they exit from the unit.
- Only use attachments/accessories specified by the manufacturer.
- Unplug this unit during lightning storms or when unused for long periods of time.
- Refer all servicing to qualified service personnel. Servicing is required when the unit has been damaged in any way, such as power-supply cord or plug is damaged, liquid has been spilled or objects have fallen into the apparatus, the unit has been exposed to rain or moisture, does not operate normally, or has been dropped.
- Battery usage CAUTION – To prevent battery leakage which may result in bodily injury, property damage, or damage to the unit:
 - Install all batteries correctly, + and - as marked on the unit.
 - Do not mix batteries (old and new or carbon and alkaline, etc.).
 - Remove batteries when the unit is not used for a long time.
 - The batteries shall not be exposed to excessive heat such as sunshine, fire, or the like.
- The unit shall not be exposed to dripping or splashing.
- Do not place any sources of danger on the unit (e.g. liquid filled objects, lighted candles).
- Where the MAINS plug or an appliance coupler is used as the disconnect device, the disconnect device shall remain readily operable.



Warning

- Never remove the casing of this apparatus.
- Never lubricate any part of this apparatus.
- Never place this apparatus on other electrical equipment.
- Keep this apparatus away from direct sunlight, naked flames or heat.
- Never look into the laser beam inside this apparatus.
- Ensure that you always have easy access to the power cord, plug or adaptor to disconnect this apparatus from the power.

Mains fuse

This information applies only to products with a UK mains plug. This product is fitted with an approved molded plug. If you replace the fuse, use one with:

- the ratings shown on the plug,
- a BS 1362 approval, and
- the ASTA approval mark.

Contact your dealer if you are not sure about what type of fuse to use. Caution: To conform with the EMC directive (2004/108/EC), do not detach the plug from the power cord.

Notice

This product complies with the radio interference requirements of the European Community.

Any changes or modifications made to this device that are not expressly approved by Philips Consumer Lifestyle may void the user's authority to operate the equipment.



"Made for iPod" and "Made for iPhone" mean that an electronic accessory has been designed to connect specifically to iPod or iPhone respectively, and has been certified by the developer to meet Apple performance standards. Apple is not responsible for the operation of this device or its compliance with safety and regulatory standards. Please note that the use of this accessory with iPod or iPhone may affect wireless performance. iPod and iPhone are trademarks of Apple Inc., registered in the U.S. and other countries.

Your product is designed and manufactured with high quality materials and components, which can be recycled and reused.

When this crossed-out wheeled bin symbol is attached to a product it means that the product is covered by the European Directive 2002/96/EC.



Please inform yourself about the local separate collection system for electrical and electronic products.

Please act according to your local rules and do not dispose of your old products with your normal household waste. Correct disposal of your old product helps to prevent potential negative consequences for the environment and human health.

Your product contains batteries covered by the European Directive 2006/66/EC, which cannot be disposed with normal household waste. Please inform yourself about the local rules on separate collection of batteries because correct disposal helps to prevent negative consequences for the environmental and human health. Recording and playback of material might require consent. See Copyright Act 1956 and The Performer's Protection Acts 1958 to 1972.



Environmental information

All unnecessary packaging has been omitted. We have tried to make the packaging easy to separate into three materials: cardboard (box), paper pulp (buffer) and polyethylene (bags, protective foam sheet.) Your system consists of materials which can be recycled and reused if disassembled by a specialized company. Please observe the local regulations regarding the disposal of packaging materials, exhausted batteries and old equipment.

This apparatus includes these labels:



Class II equipment symbol



This symbol indicates that the apparatus has a double insulation system.

Specifications

Amplifier

Rated Output Power	2 x 1 W RMS
Frequency Response	63 - 14000 Hz, -3dB
Signal to Noise Ratio	>57 dBA
Total Harmonic Distortion	<1%
MP3 Link Input	650m V RMS

Disc

Total Harmonic Distortion	<1%
Frequency Response	63 - 14000 Hz, -3dB
S/N Ratio	>57dBA

Tuner

Tuning Range	FM: 87.5 - 108MHz
Total Harmonic Distortion	<3%
Signal to Noise Ratio	>50 dBA

General

Power supply	AC: 220 - 240V, 50/60 Hz DC: 9V, 1.5 x 6 R14/UM2
Operation Power Consumption	15 W
Standby Power Consumption	< 0.5 W
Dimensions	
- Main Unit (W x H x D)	262 x 123 x 266 mm
Weight	
- With Packing	1.80 kg
- Main Unit	1.14 kg



Specifications are subject to change without notice
©2011 Koninklijke Philips Electronics N.V.
All rights reserved.

AZD102_05_QSG_V2.0

