

Register your product and get support at
www.philips.com/welcome

Streamium

MC1500H/05

MC1500H/12



EN	User manual	1
	Contact information	43

PHILIPS

EC DECLARATION OF CONFORMITY

(DECLARATION DE CONFORMITE CE)

We / Nous, PHILIPS CONSUMER LIFESTYLE B.V.
(Name / Nom de l'entreprise)

TUSSENDIEPEN 4, 9206 AD DRACHTEN, THE NETHERLANDS
(address / adresse)

Declare under our responsibility that the electrical product(s):
(Déclarons sous notre propre responsabilité que le(s) produit(s) électrique(s):)

Philips.....
(brand name, nom de la marque)

.....MCi500H/12
(Type version or model, référence ou modèle)

Wireless Micro Hi-Fi System

(product description, description du produit)

To which this declaration relates is in conformity with the following harmonized standards:
(Auquel cette déclaration se rapporte, est conforme aux normes harmonisées suivantes)

(title, number and date of issue of the standard / titre, numéro et date de parution de la norme)

EN50371 : 2002

EN62301 : 2005

EN55020 : 2007

EN55013 : 2001 + A1:2003 + A2:2006

EN55022 : 2006

EN66024 : 1998 + A1:2001 + A2:2003

EN301489-1 V1.7.1. : 2007

EN301489-17 V1.3.2. : 2008

EN300328 V1.7.1 :2006

EN60065 : 2002 + A1: 2006

Following the provisions of :

(Conformément aux exigences essentielles et autres dispositions pertinentes de:)

1999/5/EC (R&TTE Directive)

2004/108/EC (EMC Directive)

2005/32/EC (EuP) – EC/1275/2008

And are produced under a quality scheme at least in conformity with ISO 9001 or CENELEC Permanent Documents

(Et sont fabriqués conformément à une qualité au moins conforme à la norme ISO 9001 ou aux Documents Permanents CENELEC)

The Notified Body Electrosuisse..... performedCB Scheme.....
(L'Organisme Notifié) (Name and number/ nom et numéro) (a effectué) (description of intervention / description de l'intervention)

CH-4184, M1 M2, M3

And issued the certificate,
(et a délivré le certificat) (certificate number / numéro du certificat)

Remarks:
(Remarques:)

Leuven, November 26, 2009

(place, date / lieu, date)

Frank Dethier
Development Manager, Innovation Lab Leven

Frank Dethier

(signature, name and function / signature, nom et fonction)

Contents

1 Important	3	Mark Internet radio stations as Favorites	15
Safety	3	Listen to Favorite Stations	15
Environmental notices	4	Manually add Internet radio stations	16
Disposal of product & packing material	4	Listen to My Media	16
		FM radio	16
		Listen to FM radio	17
		Change frequency	17
		Automatic channel search	17
		Automatic channel search & autostore	17
		Select preset channels	17
		Manual search & store	18
		Wirelessly stream music from a computer	18
		Install TwonkyMedia™ Server	18
		Configure a PC to share music	18
		Play from a flash memory USB device	19
		Connect audio devices (AUX)	19
		Play HD music	19
2 Your Wireless Micro Hi-Fi System	6		
Overview	6		
Front view	6		
Back view	6		
Remote control	7		
3 Prepare	8		
Position Wireless Micro Hi-Fi System	8		
Connect to AC power	8		
Turn on / switch to standby	8		
First-time installation	9		
Select language	9		
4 Connect to a home network	10		
Create wireless connection with automatic IP address	10		
Create wireless connection with static IP address	10		
Create wired connection with automatic IP address	11		
Create wired connection with static IP address	11		
5 Build a music library on the harddisk	13		
Import music from a PC	13		
Rip music from CDs on Wireless Micro Hi-Fi System	13		
Record music	14		
6 Play	15		
Play CD	15		
Internet radio	15		
Listen to Internet radio	15		
		7 Play options	20
		Repeat play	20
		Shuffle play	20
		Play by artist	20
		Play by genre	20
		Create a playlist	20
		Add audio files to a playlist	21
		Play from a playlist	21
		8 Record from HD to USB	22
		9 Alphanumeric search	23
		10 Gracenote® CD information	24
		11 Settings	25
		Adjust volume	25
		Mute	25
		Change Equalizer (EQ) settings	25
		Activate Smart EQ	25
		Adjust treble / bass	25
		Set Dynamic Bass Boost (DBB)	25
		Activate Incredible Surround sound	25

Time settings	26
Synchronize with RDS radio station	26
Set the time format	26
Set the time manually	26
Set standby timer	26
Change recording speed	26
Change recording quality	27
Change language	27
Maintenance	27
Cleaning	27
Update	27
Update through PC connection	27
Restore the default settings	28

12 Add a Philips Wireless Music Station (sold separately)	29
Add a Philips Wireless Music Station to Wireless Micro Hi-Fi System	29
Broadcast music to Philips Wireless Music Stations	29
Music Follows Me	30
Delete a Philips Wireless Music Station from Wireless Micro Hi-Fi System	30
Relocate Wireless Micro Hi-Fi System or Philips Wireless Music Station after connection	30

13 Technical data	31
MCI500H - Supplied accessories	32
PC connection requirements	32

14 Troubleshooting	33
---------------------------	-----------

15 Glossary	36
--------------------	-----------

16 Contact information	42
-------------------------------	-----------

1 Important

Safety

Information for Europe:
Know these safety symbols



The 'exclamation mark' calls attention to features for which you should carefully read the supplied literature to prevent operating and maintenance problems.

The 'lightening bolt' symbol indicates uninsulated components within the product that can cause an electric shock.

To reduce the risk of fire or electric shock, do not expose the product to rain or moisture and do not place any objects filled with liquids, such as vases, on the product.

- ① Read these instructions.
- ② Keep these instructions.
- ③ Heed all warnings.
- ④ Follow all instructions.
- ⑤ Do not use this product near water.
- ⑥ Clean only with dry cloth.
- ⑦ Do not block any ventilation openings. Install in accordance with the manufacturer's instructions.
- ⑧ Do not remove the casing of this product.

- ⑨ Only use this product indoors. Do not expose the product to dripping / splashing water, rain or high humidity.
- ⑩ Keep this product away from direct sunlight, naked flames or heat.
- ⑪ Do not install near any heat sources such as radiators, heat registers, stoves, or other electrical equipment (including amplifiers).
- ⑫ Do not place any other electrical equipment on the product.
- ⑬ Do not place any sources of danger on the product (e.g. objects containing liquids, burning candles).
- ⑭ This product may include batteries. Please refer to safety and disposal instructions for batteries in this user manual.
- ⑮ This product may contain lead and mercury. Disposal of these materials may be regulated due to environmental considerations. Please refer to disposal instructions in this user manual.

Hearing Safety



Listen at a moderate volume:

Using headphones at a high volume can impair your hearing. This product can produce sounds in decibel ranges that may cause hearing loss for a normal person, even for exposure less than a minute. The higher decibel ranges are offered for those that may have already experienced some hearing loss. Sound can be deceiving. Over time your hearing 'comfort level' adapts to higher volumes of sound. So after prolonged listening, what sounds 'normal' can actually be loud and harmful to your hearing. To guard against this,

set your volume to a safe level before your hearing adapts and leave it there.
To establish a safe volume level:
Set your volume control at a low setting.
Slowly increase the sound until you can hear it comfortably and clearly, without distortion.
Listen for reasonable periods of time:
Prolonged exposure to sound, even at normally 'safe' levels, can also cause hearing loss.
Be sure to use your equipment reasonably and take appropriate breaks.
Be sure to observe the following guidelines when using your headphones.
Listen at reasonable volumes for reasonable periods of time.
Be careful not to adjust the volume as your hearing adapts.
Do not turn up the volume so high that you can't hear what's around you.
You should use caution or temporarily discontinue use in potentially hazardous situations.
Do not use headphones while operating a motorized vehicle, cycling, skateboarding, etc.; it may create a traffic hazard and is illegal in many areas.

Environmental notices

Class II equipment symbol:



This symbol indicates that this product has a double insulation system.

Modifications

Modifications not authorized by the manufacturer may void user's authority to operate this product.

Disposal of product & packing material

Your product is designed and manufactured with high quality materials and components, which can be recycled and reused.



When this crossed-out wheeled bin symbol is attached to a product, it means the product is covered by the European Directive 2002/96/EC.

Please be informed about the local separate collection system for electrical and electronic products.

Please act according to your local rules and do not dispose of your old product with your normal household waste. The correct disposal of your old product will help prevent potential negative consequences to the environment and human health.

All redundant packing material has been omitted. We have done our utmost to make the packaging easily separable into mono materials.

Please observe the local regulations regarding the disposal of packing materials.

Battery disposal information

Batteries (including built-in rechargeable batteries) contain substances that may pollute the environment. Always hand the appliance in at an official collection point to remove any built-in batteries before you discard the appliance. All batteries must be disposed of at an official collection point.



Information about the use of batteries:

! Caution

- Risk of leakage: Only use the specified type of batteries. Do not mix new and used batteries. Do not mix different brands of batteries. Observe correct polarity. Remove batteries from products that are not in use for a longer period of time. Store batteries in a dry place.
- Risk of injury: Wear gloves when handling leaking batteries. Keep batteries out of reach of children and pets.
- Risk of explosion: Do not short circuit batteries. Do not expose batteries to excessive heat. Do not throw batteries into the fire. Do not damage or disassemble batteries. Do not recharge non-rechargeable batteries.

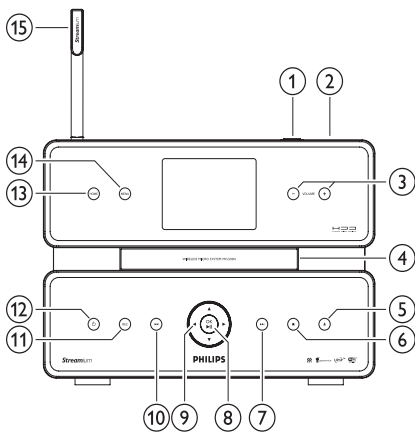
CE 0984		ⓘ R&TTE Directive 1999/5/EC		
BE ✓	DK ✓	GR ✓	ES ✓	FR ✓
IE ✓	IT ✓	LU ✓	NL ✓	AT ✓
PT ✓	FI ✓	SE ✓	UK ✓	NO ✓
DE ✓	CH ✓	PL ✓	HU ✓	SK ✓
CZ ✓	CY ✓	IS ✓		

2 Your Wireless Micro Hi-Fi System

Congratulations on your purchase and welcome to Philips!
To fully benefit from the support that Philips offers, register your product at www.philips.com/welcome.

Overview

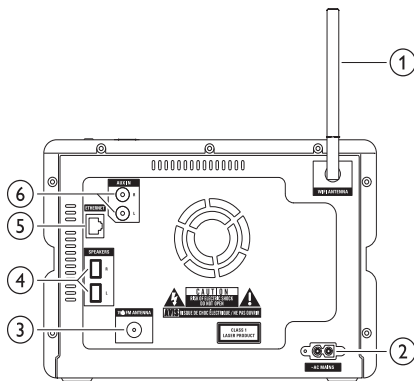
Front view



①	USB jack
②	🔊
③	+VOLUME- volume up / down
④	CD drive
⑤	▲ eject CD
⑥	■ stop
⑦	▶▶ skip forward
⑧	OK/▶ confirm / play/pause
⑨	◀/▶/▲/▼ navigate

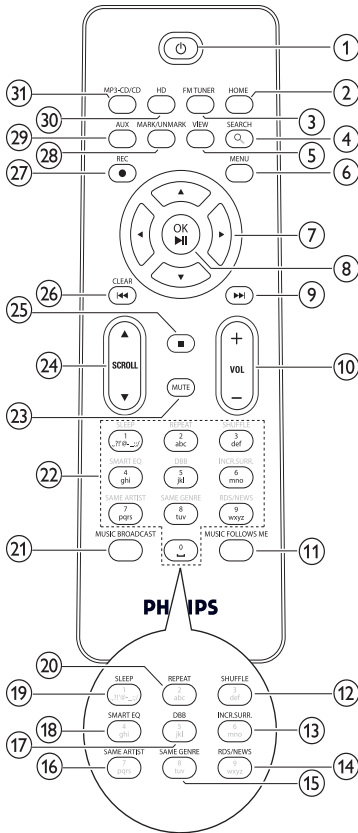
⑩	◀◀	skip back
⑪	REC	record
⑫	⏻	
⑬	HOME	
⑭	MENU	
⑮		Wi-Fi antenna

Back view



①	Wi-Fi antenna
②	~ AC MAINS power supply connection
③	FM ANTENNA FM radio antenna
④	SPEAKERS L / R
⑤	ETHERNET
⑥	AUX IN R / L external device connections

Remote control



1	⏻	
2	HOME	
3	FM TUNER	
4	SEARCH	
5	VIEW	
6	MENU	
7	◀ / ▶ / ▲ / ▼	navigate
8	OK / ▶	confirm / play/pause
9	▶▶	skip forward
10	+VOL -	volume up / down
11	MUSIC FOLLOWS ME	

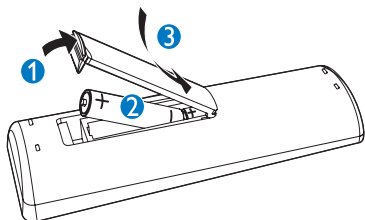
12	SHUFFLE	random play
13	INCR.SURR.	Incredible Surround sound
14	RDS/NEWS	
15	SAME GENRE	
16	SAME ARTIST	
17	DBB	Dynamic Bass Boost
18	SMART EQ	
19	SLEEP	standby timer
20	REPEAT	
21	MUSIC BROADCAST	
22	Alphanumeric keys	
23	MUTE	
24	▲ SCROLL ▼	
25	■	
26	CLEAR / ◀◀	skip back
27	REC ●	record
28	MARK/ UNMARK	
29	AUX	select external device
30	HD	harddisk music
31	MP3-CD/CD	

3 Prepare

! Caution

- Risk of explosion! Keep batteries away from heat, sunshine or fire. Never discard batteries in fire.
- Risk of decreased battery life! Never mix different brands or types of batteries.
- Risk of product damage! When the remote control is not used for long periods, remove the batteries.

- 1 Open the battery compartment.
- 2 Insert 2 AAA batteries with correct polarity (+/-) as indicated.
- 3 Close the battery compartment.



Position Wireless Micro Hi-Fi System

! Caution

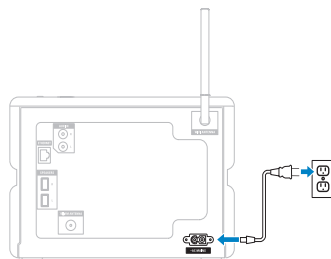
- Risk of product damage! Place Wireless Micro Hi-Fi System on a surface that is level, flat, and strong enough to support the product.

Connect to AC power

! Warning

- Risk of product damage! Ensure that the power supply voltage corresponds to the voltage printed on the type plate (at the back or at the underside of Wireless Micro Hi-Fi System).

- 1 Connect Wireless Micro Hi-Fi System to the power supply.



➔ Wireless Micro Hi-Fi System turns on and is ready to be set up for use.

Turn on / switch to standby

You can select from the following status options:

- On
- Standby
 - Active standby. The \odot button on the remote control can turn on Wireless Micro Hi-Fi System.
- Eco standby
 - Passive standby. Only the \odot button on the top panel can turn on Wireless Micro Hi-Fi System.

☰ Note

- If no buttons are pressed for 20 minutes, Wireless Micro Hi-Fi System switches to standby.

- 1 To turn on Wireless Micro Hi-Fi System, press Φ .
- 2 To switch Wireless Micro Hi-Fi System to standby, press Φ .
- 3 To switch Wireless Micro Hi-Fi System to eco standby, press and hold the Φ button on the top panel.



Note

- When Wireless Micro Hi-Fi System is in eco standby mode, the remote control is inactive.

In eco standby mode, the Wireless Micro Hi-Fi System still consumes a small amount of power.

To save energy during longer periods of non usage, pull the plug from the power supply to switch off the Wireless Micro Hi-Fi System completely.

First-time installation

When you connect Wireless Micro Hi-Fi System to the power supply, the automatic installation process starts. You must select the language before you can continue.

Select language

When you connect Wireless Micro Hi-Fi System to the power supply for the first time:

- 1 Wait until the language selection menu pops up, to select your language.
- 2 Press \blacktriangle or \blacktriangledown , then \blacktriangleright to select language.
 - ↳ The display shows the Home menu.
 - ↳ To select the network settings, follow the steps on how to Connect to a home network.



Tip

- After the first-time language set-up, you can change the language in the Settings menu.

4 Connect to a home network

Before you connect Wireless Micro Hi-Fi System to a router:

- Ensure that the PC meets the minimum requirements.
You can choose one of these modes of connection:
- Wireless connection with automatic IP address
- Wireless connection with static IP address
- Wired connection with automatic IP address
- Wired connection with static IP address

Create wireless connection with automatic IP address

This is how to navigate and select with the remote control:

- Press ▲ or ▼ to select a menu option.
- Press ► to confirm a selection.
 - Press ◀ to go back to the previous screen.
- Press **HOME** to go to the Home menu. The alphanumeric buttons of the remote control are multi-function buttons:
- To select a number or an alphanumeric character, press a button once or more until you see the number or alphabetic character in the display of Wireless Micro Hi-Fi System.
- To cycle through the alphanumeric characters that are available, press a button repeatedly.
- To delete the last character entry from the display, press **CLEAR**.
This chapter shows you how to create a wireless connection to a home network with automatic IP address.

- 1 Ensure that your network name and network password or encryption key are available.
 - Some Internet service providers (ISP) require the use of a proxy server.
- 2 Turn on your wireless access point or wireless router with broadband Internet.
- 3 Turn on Wireless Micro Hi-Fi System.
- 4 On Wireless Micro Hi-Fi System, press **MENU**.
- 5 Select **[Settings]** > **[Network]** > **[Wireless]** and confirm.
- 6 Select the network from the list in the display.
 - Enter encryption key with the remote control, then press **OK / ►||** to continue (if required).
- 7 Select **[Automatic]** > (Apply settings?) **[Yes]** and confirm.
↳ Wireless Micro Hi-Fi System displays a confirmation screen that the settings are saved.

Create wireless connection with static IP address

This is how to navigate and select with the remote control:

- Press ▲ or ▼ to select a menu option.
- Press ► to confirm a selection.
 - Press ◀ to go back to the previous screen.
- Press **HOME** to go to the Home menu. The alphanumeric buttons of the remote control are multi-function buttons:
- To select a number or an alphanumeric character, press a button once or more until you see the number or alphabetic character in the display of Wireless Micro Hi-Fi System.

- To cycle through the alphanumeric characters that are available, press a button repeatedly.
 - To delete the last character entry from the display, press **CLEAR**.
This chapter shows you how to create a wireless connection to a home network with static IP address.
- 1 Ensure that your encryption key (if required) is available.
 - 2 Turn on your wireless access point or wireless router with broadband Internet.
 - 3 Turn on Wireless Micro Hi-Fi System.
 - 4 On Wireless Micro Hi-Fi System, press **MENU**.
 - 5 Select [**Settings**] < [**Network**] > [**Wireless**] and confirm.
 - 6 Select the network from the list in the display.
 - Enter encryption key with the remote control, then press **OK** / **▶||** to continue (if required).
 - 7 Select [**Static**] and confirm.
 - 8 Enter the static IP address with the remote control and confirm.
 - 9 Select (Apply settings?) [**Yes**] and confirm.
 - ↳ Wireless Micro Hi-Fi System displays a confirmation screen that the settings are saved.

Create wired connection with automatic IP address

This is how to navigate and select with the remote control:

- Press **▲** or **▼** to select a menu option.
- Press **▶** to confirm a selection.
 - Press **◀** to go back to the previous screen.
- Press **HOME** to go to the Home menu. The alphanumeric buttons of the remote control are multi-function buttons:

- To select a number or an alphanumeric character, press a button once or more until you see the number or alphabetic character in the display of Wireless Micro Hi-Fi System.
 - To cycle through the alphanumeric characters that are available, press a button repeatedly.
 - To delete the last character entry from the display, press **CLEAR**.
This chapter shows you how to create a wired connection to a home network with automatic IP address.
- 1 Use an Ethernet cable (sold separately) to connect Wireless Micro Hi-Fi System to the access point or router that connects to your home network with broadband Internet access.
 - 2 Turn on your wireless access point or wireless router with broadband Internet.
 - 3 Turn on Wireless Micro Hi-Fi System.
 - 4 On Wireless Micro Hi-Fi System, press **MENU**.
 - 5 Select [**Settings**] > [**Network**] > [**Wired**] > [**Automatic**] > (Apply settings?) [**Yes**] and confirm.
 - ↳ Wireless Micro Hi-Fi System displays a confirmation screen that the settings are saved.

Create wired connection with static IP address

This is how to navigate and select with the remote control:

- Press **▲** or **▼** to select a menu option.
- Press **▶** to confirm a selection.
 - Press **◀** to go back to the previous screen.
- Press **HOME** to go to the Home menu. The alphanumeric buttons of the remote control are multi-function buttons:
- To select a number or an alphanumeric character, press a button once or more

until you see the number or alphabetic character in the display of Wireless Micro Hi-Fi System.

- To cycle through the alphanumeric characters that are available, press a button repeatedly.
- To delete the last character entry from the display, press **CLEAR**.

This chapter shows you how to create a wired connection to a home network with automatic IP address.

- 1** Use an Ethernet cable (sold separately) to connect Wireless Micro Hi-Fi System to the access point or router that connects to your home network with broadband Internet access.
- 2** Turn on your wireless access point or wireless router with broadband Internet.
- 3** Turn on Wireless Micro Hi-Fi System.
- 4** On the item, press **MENU**.
- 5** Select **[Settings] > [Network] > [Wired] > [Static]** and confirm.
- 6** Enter the static IP address with the remote control and confirm.
- 7** Select (Apply settings?) **[Yes]** and confirm.
 - ↳ Wireless Micro Hi-Fi System displays a confirmation screen that the settings are saved.

5 Build a music library on the harddisk



Be responsible Respect copyrights

You have the following options to build a music library on the harddisk:

- rip music from CDs
- import music from a PC
- record music from FM radio
- record music from an external device

Music recognition technology and related data are provided by Gracenote®. Gracenote is the industry standard in music recognition technology and related content delivery. For more information, please visit www.gracenote.com.

CD and music-related data from Gracenote, Inc., copyright © 2000-2007 Gracenote. Gracenote Software, copyright © 2000-2007 Gracenote. This product and service may practice one or more of the following U.S. Patents: #5,987,525; #6,061,680; #6,154,773, #6,161,132, #6,230,192, #6,230,207, #6,240,459, #6,304,523, #6,330,593, #7,167,857, and other patents issued or pending. Gracenote and CDDB are registered trademarks of Gracenote. The Gracenote logo and logotype, and the "Powered by Gracenote" logo are trademarks of Gracenote. Gracenote® is a registered trademark of Gracenote, Inc. The Gracenote logo and logotype, and the "Powered by Gracenote" logo are trademarks of Gracenote.

Import music from a PC

The import of music into Wireless Micro Hi-Fi System requires the WADM (Wireless Audio Device Manager) in the supplied PC installer. Before you can import music from a PC that is connected to a home network, you need to connect Wireless Micro Hi-Fi System to the PC.

Rip music from CDs on Wireless Micro Hi-Fi System

Important:

The CD rip process consists of various stages (ripping, compressing, converting, etc.). After the initial CD rip stage is complete, it takes approximately 15 minutes to process the ripped data. This happens in the background and during this time you can operate Wireless Micro Hi-Fi System as normal.

To avoid loss of data during or after CD rip:

- do not switch to eco standby during rip process
- do not disconnect Wireless Micro Hi-Fi System from the power supply for at least 15 minutes after the rip process stops

Rip from a CD to the harddisk of Wireless Micro Hi-Fi System at high speed:
(Audio CD, MP3/WMA CD)



Note

- While Wireless Micro Hi-Fi System is ripping, only the stop ■ function is available.



Tip

- You can rip while you listen, if you press **REC** ● during play.

- 1 On Wireless Micro Hi-Fi System, insert CD with printed side facing up.
- 2 In the track list screen, press **REC** ●.

- 3 Press **MARK/UNMARK** to select/deselect tracks. (By default, Wireless Micro Hi-Fi System rips all tracks of the CD when no tracks are marked.)
 - Long press **MARK/UNMARK** to select/deselect all tracks.
- 4 Press **REC ●** to start ripping.
- 5 To rip another CD, repeat above steps 1 to 4.
- 6 To stop ripping, press **■**.



Tip

- For information about how to change the rip quality, see chapter Settings.

Record music

You can record from 2 different sources.

- 1 Press
 - **AUX** to record from an external device.
 - **FM TUNER** to record from FM radio.
- 2 Press **REC ●**.
- 3 To stop recording, press **■**.

6 Play

Play CD

- 1 Press ▲ to open the CD tray.
- 2 Insert CD with printed side facing up.
- 3 Press ▲ to close the CD tray.
- 4 Press OK / ►|| to play.

Internet radio

Note

- Internet radio features require broadband Internet access.
- Internet radio features require registration, if you run firmware version 1.xx.xxxx on Wireless Micro Hi-Fi System.

Listen to Internet radio

- 1 Ensure that Wireless Micro Hi-Fi System is turned on.
- 2 Ensure that Wireless Micro Hi-Fi System is connected to the Internet.
- 3 Press HOME.
- 4 Press ▲ or ▼, then ► to select **[Internet Radio]**.
 - ↳ The options are displayed.
 - Press ▲ or ▼, then ► to select the station.
 - To return to the Home menu, press HOME.

Note

- Internet radio features require broadband Internet access.

Mark Internet radio stations as Favorites

You can mark Internet radio stations as your Favourites so next time you want to listen to a station, it is easy to find.

- 1 Ensure that Wireless Micro Hi-Fi System is turned on.
- 2 Ensure that Wireless Micro Hi-Fi System is connected to broadband Internet.
- 3 When you listen to Internet radio, press ► to mark the station.
 - To return to the Home menu, press HOME.
 - The next time you connect to the Internet radio, the radio station is shown in the Favorite Stations menu.

Note

- Internet radio features require broadband Internet access.
- You can also place bookmarks for Internet radio stations when you log on at www.philips.com/welcome and on the registered product site click the link **Streamium Management**.

Listen to Favorite Stations

When you place bookmarks for Internet radio stations, you can find them under Favorite Stations.

- 1 Ensure that Wireless Micro Hi-Fi System is turned on.
- 2 Ensure that Wireless Micro Hi-Fi System is connected to the Internet.
- 3 Press HOME.
- 4 Press ▲ or ▼, then ► to select **[Internet Radio] > [Favorite Stations]**.
 - To return to the Home menu, press HOME.

Note

- Internet radio features require broadband Internet access.
- You can also organize your Favorites under Streamium Management on the Philips website.

Manually add Internet radio stations

This chapter explains how to register with Philips and add individual URL addresses for Internet radio stations on the PC.

- 1 Turn on Wireless Micro Hi-Fi System.
- 2 Ensure that Wireless Micro Hi-Fi System is connected to broadband Internet.
- 3 Follow the steps to register Wireless Micro Hi-Fi System with Philips, if you have not done so already.
- 4 On the registered product site, click the link **Streamium Management**.
- 5 Select **My Media**.
- 6 Click on the tab **Music**.
- 7 Enter the URL address of Internet radio station in the first column.
- 8 Enter a nickname in the second column.
↳ The nickname is the Internet radio stations identification that is displayed Wireless Micro Hi-Fi System.
- 9 Enter a description in the third column.
- 10 Click on **Save** to confirm your entries.

Note

- If the manually added Internet radio station is available and broadcast in a compatible format, you can listen to it on Wireless Micro Hi-Fi System.
- You can find the manually added Internet radio stations in the My Media list on Wireless Micro Hi-Fi System.
- Internet radio features require broadband Internet access.

Listen to My Media

My Media allows you to access Internet radio stations that are not part of the standard service.

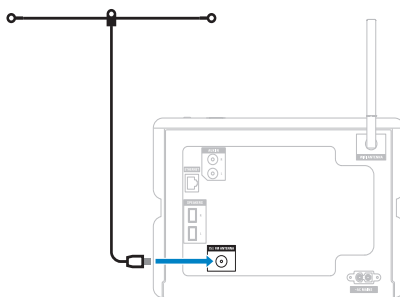
- 1 Follow the steps to register Wireless Micro Hi-Fi System with Philips.
- 2 Follow the steps to manually add Internet radio stations.
- 3 Ensure that Wireless Micro Hi-Fi System is turned on.
- 4 Ensure that Wireless Micro Hi-Fi System is connected to the Internet.
- 5 Press **HOME**.
- 6 Press ▲ or ▼, then ► to select **[Internet Radio Services]**.
- 7 Press ▲ or ▼, then ► to select **[My Media]**.
 - To return to the Home menu, press **HOME**.

Note

- Internet radio features require broadband Internet access.

FM radio

You can listen to FM radio with Wireless Micro Hi-Fi System, if you connect the supplied antenna:



Listen to FM radio

- 1 Ensure that Wireless Micro Hi-Fi System is turned on.
- 2 Ensure that you fully extend the connected FM antenna.
- 3 Press **HOME**.
- 4 Press **FM TUNER**.
 - ↳ The current frequency is displayed.
 - ↳ To return to the Home menu, press **HOME**.

Tip

- You can optimize the reception when you rotate the FM antenna.
- You can use the automatic search & store function to store channels under presets.

Change frequency

To fine tune the reception of a channel, you can adjust the channel frequency.

- 1 Ensure that Wireless Micro Hi-Fi System is turned on.
- 2 Press **HOME**.
- 3 Press **FM TUNER**.
 - ↳ The current frequency is displayed.
- 4 Press **▲▼** to adjust the frequency.
 - To return to the Home menu, press **HOME**.

Tip

- You can store channel frequencies under a preset channel number.

Automatic channel search

Wireless Micro Hi-Fi System can automatically search available channels.

- 1 Ensure that Wireless Micro Hi-Fi System is turned on.
- 2 Press **HOME**.

- 3 Press **▲** or **▼**, then **▶** to select **[FM Tuner]**.
 - ↳ The current frequency is displayed.
- 4 Press and hold **▲** or **▼** to start automatic search function.
 - ↳ When a channel is found, the search stops.
- 5 Press **MENU**.
- 6 Select **[Save to Preset]**.
- 7 Press **▲** or **▼**, then **▶** to select.
 - ↳ The frequency is stored under the selected preset number.
 - ↳ To return to the Home menu, press **HOME**.

Automatic channel search & autostore

Wireless Micro Hi-Fi System can automatically search and store up to 60 channels under the preset numbers.

- 1 Turn on Wireless Micro Hi-Fi System.
- 2 Press **HOME**.
- 3 Press **▲** or **▼**, then **▶** to select **[FM Tuner]**.
 - ↳ The current frequency is displayed.
 - ↳ Press **MENU**.
- 4 Select **[Autostore radio]**.
 - ↳ Wireless Micro Hi-Fi System searches and stores channels.
 - ↳ When all available channels are stored, the search stops.
 - ↳ To return to the Home menu, press **HOME**.

Select preset channels

You can find your preset channels in the preset channel list.

- 1 Turn on Wireless Micro Hi-Fi System.
- 2 Press **HOME**.

- 3 Press ▲ or ▼, then ► to select **[FM Tuner]**.
↳ The current frequency is displayed.
- 4 Press ► to display preset channel numbers.
- 5 Press ▲▼ to select, then press ►.
 - To return to the Home menu, press **HOME**.

Manual search & store

You can manually search and store channels.

- 1 Turn on Wireless Micro Hi-Fi System.
- 2 Press **HOME**.
- 3 Press ▲ or ▼, then ► to select **[FM Tuner]**.
↳ The current frequency is displayed.
- 4 Press ▲▼ to change the frequency.
- 5 Press **MENU**.
- 6 Select **[Save to Preset]**.
- 7 Press ▲▼ to select, then press ►.
↳ The frequency is stored under the selected preset number.
↳ To return to the Home menu, press **HOME**.



Tip

- You can overwrite preset channel numbers with new frequencies.

Wirelessly stream music from a computer

You can wirelessly stream music to Wireless Micro Hi-Fi System from a connected computer. The following chapters show you how to

- install the software on your computer
- configure the computer to share your music

Note

- If TwonkyMedia™ Server is already installed on the computer, you can skip the installation section and continue with the configuration.
- For any other media players, refer to the instructions of the player.

Install TwonkyMedia™ Server

- 1 On the computer, insert the supplied software CD.
↳ Installation of TwonkyMedia™ starts.
- 2 Follow the instructions on the computer to install the software.

Configure a PC to share music

You can share music from a PC with Wireless Micro Hi-Fi System. This chapter shows you how to configure the PC to share music.

- 1 Follow the instructions to install TwonkyMedia™ Server (see 'Install TwonkyMedia™ Server' on page 20).
- 2 On the PC, click **Start > Programs > TwonkyMedia™ > TwonkyMedia™ Tray Control**.
- 3 On the task bar, click the TwonkyMedia™ Server icon.
- 4 Choose **Media Server Settings**.
- 5 In the **Basic Settings** of the Configuration Page, click on **Sharing**.
↳ The content directories are scanned.
↳ to manually locate the music, click **Browse**
↳ to manually add a new content directory, click **Add new content directory**.
↳ To save the changes, press **Save changes**.
- 6 On the remote control of Wireless Micro Hi-Fi System, press **HOME**.
- 7 Select **[UPnP]** and confirm with **OK**.

↳ The display shows [Searching for UPnP servers...].

- 8 Press ▲ / ▼ to select the server name and confirm with **OK**.



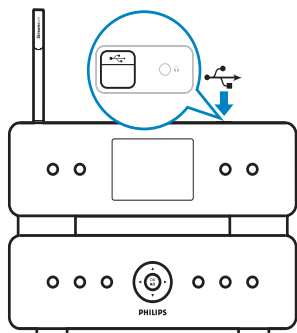
Tip

- The TwonkyMedia™ sharing page lets you set the rescan behavior of the server. The default setting is -1 minutes, which ensures auto-scan.

Play from a flash memory USB device

You can play music from a USB device. You can also transfer the music library of Wireless Micro Hi-Fi System to a USB mass storage device.

- 1 Insert the USB plug of the USB device into the USB socket of Wireless Micro Hi-Fi System.

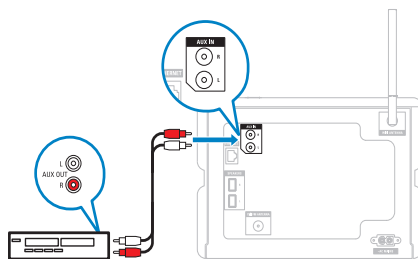


- 2 On Wireless Micro Hi-Fi System, press **HOME**.
- 3 Press ▲ or ▼, then ► to select [**USB**].
↳ The display shows the USB device.
- 4 Press ▲ or ▼, then ► to select the USB content,
- To return to the Home menu, press **HOME**.

Connect audio devices (AUX)

You can play music from an external appliance that is connected to the AUX input of Wireless Micro Hi-Fi System.

- 1 Consult the user manual of the external appliance to connect the supplied audio cable to the audio output jack of the external appliance.
- 2 Connect the other end of the audio cable to the **AUX IN** jack of Wireless Micro Hi-Fi System.



- 3 On the remote control of Wireless Micro Hi-Fi System, press **HOME**.
- 4 Press ▲ or ▼, then ► to select [**AUX**].
- 5 Operate the controls of the external appliance to play music.

Play HD music

- 1 Press **HD** to enter the HD music menu.
- 2 Press ▲ or ▼, then ► to select menu options.
↳ The display guides you through the menu.
- 3 Press **OK** / ►|| to play.
 - To stop play, press ■.

7 Play options

You can choose between various play options:

- Repeat play
- Shuffle play
- Play by artist
- Play by genre

Repeat play

You can repeat one or all audio files of the current selection.

- 1 In play mode, press **REPEAT** to toggle the repeat function as follows:
 - **Repeat 1**
 - The current audio file is continuously repeated until another mode or setting is selected.
 - **Repeat all**
 - All audio files of the current selection are continuously repeated until another mode or setting is selected.
 - **Off** (default)

Shuffle play

You can play the audio files of the current selection in random order (shuffled).

- 1 During play, press **SHUFFLE** to toggle shuffle on and off.
 - ↳ When you turn shuffle on, the current selection of audio files is played in random order.

Play by artist

You can play all audio files of the same artist from the HD of the Philips Wireless Music Center:

- 1 When you play HD audio, press **SAME ARTIST**.

Play by genre

You can play all audio files of the same genre from the HD of the Philips Wireless Music Center:

- 1 When you play HD audio, press **SAME GENRE**.

Create a playlist

You can create up to 99 playlists on the hard disk of the connected Philips Wireless Music Center:

- 1 Ensure that Wireless Micro Hi-Fi System is turned on.
- 2 On the remote control of Wireless Micro Hi-Fi System press **HD**.
- 3 Press **MENU** to enter the HD menu.
- 4 Press **▲** or **▼**, then **▶** to select [**Create Playlist**].
 - ↳ A new playlist with a default album name, such as Playlist_001, is created.
 - ↳ To return to the Home menu, press **HOME**.

Add audio files to a playlist

You can add up to 300 audio files to a playlist.

- 1 Ensure that Wireless Micro Hi-Fi System is turned on.
- 2 On the remote control, press **HD**.
- 3 Press **▲** or **▼**, then **▶** to select audio file.
- 4 Press **MENU** to enter the HD menu.
- 5 Press **▲** or **▼**, then **▶** to select **[Add To Playlist]**.
- 6 Press **▲** or **▼**, then **▶** to select playlist.
 - ↳ The audio file is added to the selected playlist.
 - ↳ To return to the Home menu, press **HOME**.

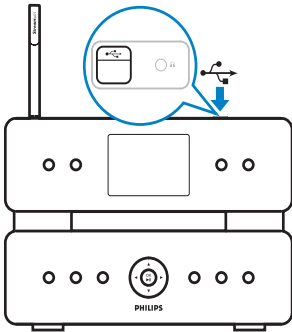
Play from a playlist

- 1 Ensure that Wireless Micro Hi-Fi System is turned on.
- 2 On the remote control, press **HD**.
- 3 Press **MENU** to enter the HD menu.
- 4 Press **▲** or **▼**, then **▶** to select **[Playlists]**.
- 5 Press **▲** or **▼**, then **▶** to select playlist.
- 6 Press **OK / ▶||** to play.
 - To stop play, press **■**.
 - To return to the Home menu, press **HOME**.

8 Record from HD to USB

You can record music files from the HD (harddisk) of Wireless Micro Hi-Fi System to a flash memory USB device.

- 1 Insert the USB plug of the USB device into the USB socket of Wireless Micro Hi-Fi System:



Use the remote control of Wireless Micro Hi-Fi System for the following steps:

- 2 Press **HD**.
- 3 Press **REC ●**.
- 4 Press **MARK/UNMARK** to select/deselect tracks. (By default Wireless Micro Hi-Fi System records all tracks of the HD when no tracks are marked.)
 - Long press **MARK/UNMARK** to select/deselect all tracks.
- 5 Press **REC ●** to start recording.
- 6 To stop recording, press **■**.

9 Alphanumeric search

You can search for specific audio files on a connected UPnP device.

- 1 Ensure that Wireless Micro Hi-Fi System is turned on.
- 2 Press **HOME**.
- 3 Press **▲** or **▼**, then **▶** to select the music source.
↳ The display shows the available lists.
- 4 Press **▲** or **▼**, then **▶** to select list.
- 5 Press **SEARCH**.
↳ The display shows a text box.
- 6 Press the alphanumeric buttons on the remote control to enter the search word.
- 7 Press **OK / ▶||** to start the search.
↳ Wireless Micro Hi-Fi System shows the closest alphabetical match.
- 8 To stop the search, press **■**.
 - To return to the Home menu, press **HOME**.



Note

- The alphanumeric search is available in HD source and UPnP source.

10 Gracenote® CD information

Gracenote® CD Information

Gracenote MusicID® provides the set with CD track information (including album, artist, genre, track information) from its built-in database. It allows the recorded CD tracks to be properly categorized (for example, under Artists, Albums, Genres or All tracks) and be merged with the existing tracks in the hard disk.

Gracenote® Media Database

A CD database is embedded in every MCI500H for quick look-up on track information. An update file that contains newly released CDs is available quarterly on www.club.philips.com for download.

Update Gracenote® Media Database

Use your PC to register your product on www.club.philips.com and go to "Show Upgrades & Support" page to download Gracenote® Media Database update. Note that the updates are posted quarterly and new updates are independent from old updates, i.e. a new update can be installed, even without the previous update.

11 Settings

Adjust volume

- 1 During play, press **+ VOL -** to adjust the volume.

Mute

You can turn off the sound of your audio.

- 1 During play, press **MUTE**.
 - To turn the sound back on, press **MUTE** again.

Change Equalizer (EQ) settings

You can adjust the audio sound with the following equalizer settings:

- [Rock]
- [Pop]
- [Jazz]
- [Neutral]
- [Techno]
- [Classical]

- 1 Turn on Wireless Micro Hi-Fi System.
- 2 Press **MENU**.
- 3 Press **▲** or **▼**, then **▶** to select [Equalizer].
- 4 Press **▲** or **▼** to select.
 - To return to the Home menu, press **HOME**.

Activate Smart EQ

- 1 Ensure that Wireless Micro Hi-Fi System is turned on.
- 2 Press **SMART EQ** to toggle between the options:
 - activate Smart EQ
 - deactivate Smart EQ

- The Smart EQ function automatically selects equalizer settings according to the genre that is associated with the audio file.
- If no genre is associated with the audio file, the default setting is Pop.

Adjust treble / bass

- 1 Ensure that Wireless Micro Hi-Fi System is turned on.
- 2 Press **MENU**.
- 3 Press **▲** or **▼**, then **▶** to select [Settings] > [Bass/Treble].
- 4 Press **▲** or **▼**, then **▶** to select.
- 5 Press **▲** or **▼**, then **▶** to adjust.
 - To return to the Home menu, press **HOME**.

Set Dynamic Bass Boost (DBB)

You can choose from the following DBB settings:

- [DBB]
 - [DBB2]
 - [DBB3]
 - [DBB OFF] (default)
- 1 To toggle between the settings, press **DBB**.

Activate Incredible Surround sound

- 1 To activate the Incredible Surround sound feature, press **INCR.SURR..**
 - To deactivate the feature, press the button again.

Time settings

This chapter shows you how to change the time settings.

Synchronize with RDS radio station

RDS (Radio Data System) is a service that allows FM stations to send additional information along with the FM radio signal. Automatic time synchronization is one of the RDS features.

- 1 Ensure that the radio station you select for synchronization has RDS.
- 2 Ensure that Wireless Micro Hi-Fi System is turned on.
- 3 Press **MENU**.
- 4 Press **▲** or **▼**, then **▶** to select **[Settings]** > **[Time]** > **[Auto Time Sync]**.
- 5 Press **▲** or **▼**, then **▶** to select the RDS station.
- 6 To return to the Home menu, press **HOME**.

Set the time format

- 1 Ensure that Wireless Micro Hi-Fi System is turned on.
- 2 Press **MENU**.
- 3 Press **▲** or **▼**, then **▶** to select **[Settings]** > **[Time]** > **[Time Format]**.
- 4 Press **▲** or **▼**, then **▶** to select format.
- 5 Press **◀** to return to the previous selection menu.
 - To return to the Home menu, press **HOME**.

Set the time manually

- 1 Ensure that Wireless Micro Hi-Fi System is turned on.
- 2 Press **MENU**.
- 3 Press **▲** or **▼**, then **▶** to select **[Settings]** > **[Time]** > **[Set Time]**.
- 4 Press **▲** or **▼** to adjust, then **▶** to confirm the time.
- 5 Press **◀** to return to the previous selection menu.
 - To return to the Home menu, press **HOME**.



Tip

- You can also press the numeric buttons (0-9) and enter the time directly.

Set standby timer

You can select a set time period after which Wireless Micro Hi-Fi System automatically switches to standby.

The timer offers the following options in minutes:

- **[Sleep 15]**
 - **[Sleep 30]**
 - **[Sleep 45]**
 - **[Sleep 60]**
 - **[Sleep 90]**
 - **[Sleep 120]**
 - **[Sleep off]**
- 1 Ensure that Wireless Micro Hi-Fi System is turned on.
 - 2 Press **SLEEP** one or more times to select a time period.
 - ↳ When you set the timer, the display shows the sleep icon:
 - ↳ To view the remaining countdown time to standby, press **SLEEP** anytime.

Change recording speed

You can change the speed at which Wireless Micro Hi-Fi System rips a CD.

- 1 Press **CD**.
- 2 Press **MENU**.
- 3 Press **▲** or **▼**, then **▶** to select **[Settings]**.
- 4 Press **▲** or **▼**, then **▶** to select **[Normal speed]** or **[Fast speed]**.

Change recording quality

You can change the quality in which Wireless Micro Hi-Fi System rips a CD.

- 1 Press **CD**.
- 2 Press **MENU**.
- 3 Press **▲** or **▼**, then **▶** to select **[Settings]**.
- 4 Press **▲** or **▼**, then **▶** to select **[Rec quality]**.
- 5 Press **▲** or **▼**, then **▶** to select the bit rate.

Change language

You can change the language that you have set during the first-time installation.

- 1 Ensure that Wireless Micro Hi-Fi System is turned on.
- 2 Press **MENU**.
- 3 Select **[Settings] > [Language]**.
- 4 Press **▲** or **▼**, then **▶** to select.
- 5 To return to the Home menu, press **HOME**.

Maintenance

Cleaning

Note

- Avoid moisture and abrasion.

- 1 Clean Wireless Micro Hi-Fi System only with a soft dry cloth.

Update

- When Wireless Micro Hi-Fi System is connected to a PC, you can download new firmware updates.

Update through PC connection

This chapter shows you how to install the WADM (Philips Wireless Audio Device Manager) software. The WADM is necessary to search and download software updates for Wireless Micro Hi-Fi System.

- 1 On the PC, visit the <Website>.
- 2 Download the latest software for Wireless Micro Hi-Fi System to the harddisk of the PC.
- 3 Ensure that Wireless Micro Hi-Fi System is turned on.
- 4 Ensure that Wireless Micro Hi-Fi System is connected to the network of the PC.
- 5 Press **MENU**.
- 6 Insert the PC Suite CD into the PC.
- 7 Follow the instructions on the PC to install WADM.
- 8 When the security alert message (Microsoft Windows Firewall) pops up, press 'Unblock' to allow the WADM application to run on the PC.
 - ↳ The firewall is still effective and only allows the WADM to run.
- 9 On the WADM screen, select **Device Configuration**.

- 10 In the Device Configuration screen, select **Firmware upgrade** and click **OK**.
- 11 Click **Browse** to locate the software image file that you saved on the harddisk of the PC.
- 12 Click **OK** to start the update.
 - ↳ The software update progress is shown.
 - ↳ When the software installation is complete, Wireless Micro Hi-Fi System restarts.



Tip

- You can also consult the user manual of the PC and manually add the WADM application to your list of programs that are safe to run.

Restore the default settings

You can restore the default settings (including network settings) of Wireless Micro Hi-Fi System.

- 1 Ensure that Wireless Micro Hi-Fi System is turned on.
- 2 Press **MENU** to enter the menu display.
- 3 Press **▲** or **▼**, then **▶** to select **[Settings]** > **[Restore settings]**.
- 4 Press **▶**.
- 5 Press **▶** to select **[Yes]**.
 - ↳ Wireless Micro Hi-Fi System restarts when the factory settings are restored.
 - ↳ The language selection display is shown.



Tip

- You can restore the default settings without losing the audio files on the harddisk of a connected PC or Center.

12 Add a Philips Wireless Music Station (sold separately)

You can add up to 5 Philips Wireless Music Stations (sold separately) and expand your wireless music to other locations in your home.

Add a Philips Wireless Music Station to Wireless Micro Hi-Fi System

This connection creates a wireless of the Philips Wireless Music Station to the home network that Wireless Micro Hi-Fi System connects to:

- 1 Place Wireless Micro Hi-Fi System and the Philips Wireless Music Station next to each other.
- 2 Follow the instructions of the Philips Wireless Music Station to connect the Station to the power supply.
- 3 Turn on Wireless Micro Hi-Fi System.
- 4 Turn on the Philips Wireless Music Station.
 - If you turn on the Philips Wireless Music Station for the first time, follow the instructions of the Philips Wireless Music Station to select the language.
 - The devices are ready for the connection setup.

Connection setup:

- 1 On the remote control of Wireless Micro Hi-Fi System, press **HD**.
- 2 Press **MENU** to enter the menu screen.
- 3 Press **▲** or **▼**, then **▶** to select **[Station Mgmt.]**.

- 4 Press **▲** or **▼**, then **▶** to select **[Add New Station]**.
 - ↳ Wireless Micro Hi-Fi System searches for Philips Wireless Music Stations.
- 5 Follow the instructions of the Philips Wireless Music Station to enter the **'Installation Mode'** on the Station. (The Philips Wireless Music Station must be in **'Installation Mode'** so that Wireless Micro Hi-Fi System can find it.)
- 6 When the display of Wireless Micro Hi-Fi System shows that the Philips Wireless Music Station is found, press **■**.
 - ↳ Wireless Micro Hi-Fi System stops to search.
 - ↳ You can relocate the devices.

Note

- Thick walls and metal obstacles between the devices can impair the wireless connection.

Broadcast music to Philips Wireless Music Stations

Note

- This feature requires that you first connect Wireless Micro Hi-Fi System to a Philips Wireless Music Station (sold separately).

- 1 Ensure that the Philips Wireless Music Station is turned on.
- 2 Ensure that Wireless Micro Hi-Fi System is turned on.
- 3 While playing music, press **MUSIC BROADCAST**.
 - ↳ After a short delay, all connected Philips Wireless Music Stations play the music you broadcast from Wireless Micro Hi-Fi System.
 - ↳ To stop the broadcast on Wireless Micro Hi-Fi System, press **■**.

- ↳ To stop the broadcast on the connected Philips Wireless Music Station, press **■**.

Music Follows Me

Note

- This feature requires that you first connect Wireless Micro Hi-Fi System to a Philips Wireless Music Station (sold separately).

As you move around at home, let the music move with you between Wireless Micro Hi-Fi System and one or more connected Philips Wireless Music Stations. The unit where the music is playing is the source unit. The unit to which you want to move the music is the destination unit.

- 1 Ensure that source unit and the destination unit are turned on.
- 2 On the source unit, press **MUSIC FOLLOWS ME**.
↳ The displays of the source unit and the destination unit show an icon to indicate that the feature is activated.
- 3 On the destination unit, press **MUSIC FOLLOWS ME**.
↳ The icon disappears from the displays.
↳ The music play simultaneously stops on the source unit and starts on the destination unit.
↳ To stop the music play, press **■** on the unit where the music plays.

Delete a Philips Wireless Music Station from Wireless Micro Hi-Fi System

- 1 On the remote control of Wireless Micro Hi-Fi System, press **HD**.
- 2 Press **MENU**.
- 3 Press **▲** or **▼**, then **▶** to select **[Station Mgmt]**
- 4 Press **▲** or **▼**, then **▶** to select **[Delete Station]**.
↳ The display shows all the Philips Wireless Music Stations that are connected to the network of Wireless Micro Hi-Fi System.
- 5 Press **▲** or **▼**, then **▶** to select the Philips Wireless Music Station you want to delete.
- 6 Press **▲** or **▼**, then **▶** to select **[Yes]**.
↳ The Philips Wireless Music Station is deleted from the network of Wireless Micro Hi-Fi System.

Relocate Wireless Micro Hi-Fi System or Philips Wireless Music Station after connection

- 1 Turn off (or switch to Eco Standby) the device you want to relocate.
- 2 Disconnect the device from the power supply.
- 3 Reconnect the device to the power supply in the new location.
↳ The Wi-Fi connection recovers automatically.

Note

- Thick walls and metal obstacles between the devices can impair the wireless connection.

13 Technical data

General

AC Power	Voltage information is printed on the back or the underside of the MCi500H.
Dimensions (w x h x d)	260 x 180 x 275 mm
Weight (net)	Main unit: ~ 3.5 kg Main unit + speakers: ~ 5.5 kg

Power consumption

On	45 W
Standby (active)	< 15 W (typically 12 W)*
ECO (passive standby)	< 0,9 W

* Power consumption during active standby is based on Wi-Fi infrastructure, no LAN connection, no background music compression and no streaming to other stations.

Amplifier

Output power	2 x 50 W (RMS)
Frequency response	30 - 22,000 Hz (-3 dB)
Signal to noise ratio	75 dBA (IEC)

Speakers

Power	50 W (RMS) / 75 W (MPO)
Frequency response	60 Hz - 30 kHz (-6 dB)
Sensitivity	84 dB / m / W
Impedance	9 Ω
Speaker drivers	2-way bass reflex system 5¼" woofer, 25 mm dome tweeter
Dimensions (w x h x d)	173 x 300 x 265 mm

Headphone

Impedance	16 - 150 Ω
-----------	------------

Input sensitivity

AUX IN	500 mV / 1 V (user selectable)
--------	--------------------------------

Wireless

Wireless standard	802.11g, backwards compatible to 802.11b
Wireless security	WEP (64 or 128 bit), WPA/WPA2 (8-63 characters)
Frequency range	2412 - 2462 MHz CH1-CH11

Wired (LAN / Ethernet)

Wired standard	802.3 / 802.3 u
Speed	10 / 100 MBit/s
Mode	half / full duplex
Crossover detection (Auto MDIX)	Yes

Tuner

FM wave range	87.5 - 108.0 MHz
Number of presets	60 Ω
FM antenna / cable	COAX / dipole antenna (75 Ω IEC connector)

HD player

Frequency range	30 - 20,000 Hz (-3 dB)
Signal to noise ratio	75 dBA (IEC)
M4A (AAC) bit rate	16 - 320 kbps, CBR / VBR
MP3 bit rate	32 - 320 kbps, CBR / VBR
WMA bit rate	up to 192 kbps, CBR / VBR
Sampling frequencies	32, 44.1, 48 kHz
HD storage capacity	160 GB*
Recording quality	128, or 160, or 192, or 256, or 320 kbp
Recording speed	1x, 4x
CDDDB (CD recognition database)	Internal Gracenote® / online access enabled
Album artwork	Supported

* Actual formatted capacity will be less

CD player

Frequency range	60 - 20,000 Hz (-3 dB)
Signal to noise ratio	75 dBA (IEC)
M4A (AAC) bit rate	16 - 320 kbps, CBR / VBR
MP3 bit rate	32 - 320 kbps, CBR / VBR
WMA bit rate	up to 192 kbps, CBR / VBR
Sampling frequencies	32, 44.1, 48 kHz

USB player

USB	12 Mbps, V1.1 (supports MP3, WMA and M4A files)
USB class	MSC, MTP
Number of tracks / titles	maximum 9999
File format	FAT, FAT-32 only

Specifications and external appearance are subject to change without notice.

MCi500H - Supplied accessories

- Remote control
- 2 AAA batteries
- AC power cable
- RCA cable
- FM radio antenna

PC connection requirements

The minimum requirements for PC connections are:

- Windows 2000 SP4 (or above) / XP SP2 / Vista
- Pentium III 500 MHz processor or higher
- 256 MB RAM
- CD-ROM drive
- Adapter
 - Ethernet enabled, plus Ethernet cable (for wired connection)
 - Wireless network 802.11 b/g (for wireless connection)
- 500 MB free hard disk space

14 Troubleshooting

! Caution

- Never try to repair the system yourself as this will invalidate the warranty.
- Do not open the system as there is a risk of electric shock.
- If a fault occurs, first check the FAQ points, then consult your dealer or Philips for help.

Wireless Micro Hi-Fi System is connected to a home network and music skips during play (from any source including HD), what do I do?

- Ensure that the network router is turned on.
- Ensure that the network settings are correct for the selected network (see section 'Connect to a home network').

I cannot hear any sound or the sound is poor, what do I do?

- Press **+ VOL** - to increase the volume.
- Press the **MUTE** button again to reactivate the sound output.
- Check that the RCA cable is connected correctly.
- Check that you have selected 'Aux in' as the source on the connected stereo system.
- Check if the volume control of the connected stereo system is adjusted correctly.

The radio reception is poor, what do I do?

- Adjust the antenna for better reception.
- Increase the distance between Wireless Micro Hi-Fi System and TV or VCR devices.

Is there a maximum distance of transmission between a Philips Wireless Music / Micro Center and Wireless Micro Hi-Fi System for effective streaming?

Yes. The maximum distance of Wi-Fi transmission is 250m measured in open spaces. However, in a home environment, where solid obstacles such as walls and doors are present, the effective transmission distance is reduced to 50-100m. Reposition the devices if you experience transmission problems.

How do I avoid Wi-Fi interferences from other devices that operate in the same (2.4GHz) frequency spectrum, such as Dect phones or bluetooth devices?

- Move Wireless Micro Hi-Fi System at least 3m away from such devices.
- Use a WEP/WPA encryption key when you create the wireless connection your PC / home network.
- Change the operating channel on the interfering devices.
- Turn the devices in different directions to minimize interference.

The wireless firmware update failed, what do I do?

- 1** Ensure that the PC is connected to the Internet.
- 2** Use an Ethernet cable (sold separately) to connect Wireless Micro Hi-Fi System to the PC.
- 3** On the PC, launch the WADM to update the firmware.

I have done all the steps described to connect Wireless Micro Hi-Fi System to my wireless home network, but Wireless Micro Hi-Fi System is still not connected.

- On Wireless Micro Hi-Fi System, press **MENU**. Select **[Information] > [Wireless] > [Wireless Mode]** Check that Wireless Micro Hi-Fi System has been changed from **Ad hoc mode** to **Infrastructure mode**. Also check that the SSID, IP address, WEP key, or WPA key matches the setup of your wireless home network.
- Try to change the SSID on your router to a more unique name to ensure that

it is different from the SSID that your neighbors use for their router.

- Wireless Micro Hi-Fi System supports wireless and wired connection at the same time. There is a chance that your wireless IP address and your wired IP address are on the same subnet. This will confuse the device. Consider changing the DHCP range of your wireless router so that the wireless IP received by the device is on a different subnet from its wired IP address.
- Try to change the channel of your home network settings on the router.
- On your router, consider using a WPA key instead of a WEP key. When you use a WEP as your encryption key, set all 4 keys to be the same.
- Ensure that the turbo mode of your wireless router is switched off, if your router has this function.

After ripping music from a CD the data is lost, why is that?

The CD rip process consists of various stages (ripping, compressing, converting, etc.). After the initial CD rip stage is complete, it takes approximately 15 minutes to process the ripped data. This happens in the background and during this time you can operate Wireless Micro Hi-Fi System as normal.

Solution to avoid loss of data during or after CD rip:

- do not switch to eco standby during rip process
- do not disconnect Wireless Micro Hi-Fi System from the power supply for at least 15 minutes after the rip process stops

The wireless firmware update failed, what do I do?

- 1** Ensure that the PC is connected to the Internet.
- 2** Use an Ethernet cable (sold separately) to connect Wireless Micro Hi-Fi System to the PC.

- 3** On the PC, launch the WADM on the PC to update the firmware.

I have problems installing WADM or launching WADM after installation, what do I do?

- Ensure that the operating system of the PC meets the requirements.
- Ensure that the PC is virus-free.

Some files on the USB device are not displayed, what do I do?

- Check if the number of folders exceeds 99 or the number of titles exceeds 999.
- Only completely recorded MP3/WMA files can be found and played. Check if the file has been recorded completely.
- DRM-protected WMA files cannot be played.

The remote control does not function properly, what do I do?

- Reduce the distance between the remote control and Wireless Micro Hi-Fi System.
- Insert the batteries with correct polarity (+/- as indicated inside the battery compartment).
- Replace the batteries.
- Point the remote control directly at the infrared sensor.

The screen of Wireless Micro Hi-Fi System is stuck in a menu or shows no response for a long period of time (2-5 minutes), what do I do?

- Press **⏻/ON/STANDBY/ECO-STANDBY**.
- If the problem persists, restart the power (disconnect and reconnect the power plug) to reset Wireless Micro Hi-Fi System.

'No Disc' / 'Cannot read CD' is displayed, what do I do?

- Insert a suitable disc.
- Check if the disc is inserted with the graphics side (label) facing up.
- Wait for the condensation moisture on the lens to clear.
- Replace or clean the disc.
- Use a finalized CD-RW or CD-R.

15 Glossary

A

AAC (Advanced Audio Coding)

An audio compression scheme defined as part of the MPEG-2 standard (also known as MPEG-2 AAC or MPEG-2 NBC, or Not Backwards Compatible). It offers better sound and a compression ratio that is superior by roughly 30 percent compared to the MPEG-1 MP3 format.

AC (alternating current)

An alternating current is an electrical current whose magnitude and direction vary cyclically, as opposed to DC (direct current), whose direction remains constant. The usual waveform of an AC power circuit is a sine wave, as this results in the most efficient transmission of energy. However certain applications use different waveforms, such as triangular or square waves.

Amplifier

A device, either a single stage or a large scale circuit with multiple stages for creating gain, i.e. it makes small signals larger.

Antenna

A device, such as a rod or wire, which picks up a received radio frequency signal or radiates a transmitted RF signal.

Audio output

High-level (speaker) or line-level (RCA) signals sent from one system component to another; or the high-level signal from an amplifier to the system speakers.

AUX

Auxiliary input that allows you to connect portable audio devices.

B

Bass

The lowest three octaves of the audio band. Low bass is the bottom octave (20-40Hz), mid-bass is the middle octave (40-80Hz), and upper bass is the 80-160Hz octave.

Bit / bits

A bit is a binary digit, taking a value of either 0 or 1. For example, the number 10010111 is 8 bits long.

Bit rate

Bit rate is the number of bits that are conveyed or processed per unit of time. The bit rate is usually measured in some multiple of bits per second (kilobits per second: kbps). The term bit rate is a synonym for data transfer rate (or simply data rate).

C

CBR (constant bit rate)

With CBR the encoder spends the same amount of bits on each frame, regardless of how much it may really need. Disadvantage of CBR: Bits are wasted in case of absolute blackness of a picture or complete silence in an audio frame. And pictures or audio frames with a lot of elements may need those bits.

CD (Compact Disc)

Format developed by Phillips, Sony, and Pioneer for conveying music and data. CDs record information by deforming the inner metal foil on the disc with tiny micro pits burned in by a laser.

CDDB

A centralized database of CDs, CD tracks, and artists on the Web, now known as Gracenote. The audio player or burner program can log on to CDDB. It uploads the ID of the CD being played, and then downloads the title, artist, and track list.

Coaxial

A single copper conductor, surrounded with a layer of insulation, covered by a surrounding copper shield and finally, an insulating jacket. An unbalanced transmission line with constant impedance. In audio, this type is commonly used for low level, line signals terminated in RCA connectors.

Compression

In audio terms, this is a process of temporarily or permanently reducing audio data for more efficient storage or transmission. A temporary reduction in file size is called 'non-lossy' compression, and no information is lost. A permanent reduction in file size (such as with MP3 files) is called 'lossy' compression, and involves discarding unnecessary information which is irretrievably lost.

D

dB (Decibel)

A unit of measure used to express relative difference in power or intensity of sound.

DC (direct current)

Direct current or continuous current is the constant flow of electric charge. This is typically in a conductor such as a wire. In direct current, the electric charges flow in the same direction, distinguishing it from AC (alternating current).

DHCP

DHCP stands for Dynamic Host Configuration Protocol. It is a protocol for assigning dynamic IP addresses to devices on a network.

Digital

A method to encode information using a binary code of 0s and 1s. Many wireless phones and networks use digital technology.

Digital Audio

Digital Audio is a sound signal that has been converted into numerical values. Digital sound can be transmitted through multiple channels.

Analog sound can only be transmitted through two channels.

Duplex (half/full)

- Full duplex is the ability to send and receive data simultaneously. Duplex is synonymous with full duplex. Example: when a modem operates in full-duplex mode, it can transmit data in two directions simultaneously. In half-duplex mode it can transmit data in two directions, but not simultaneously.

E

Eco (Eco Standby)

Eco Standby is the most 'economic' mode of the MCI500H and consumes less than 1W. It is 'economic' and environmentally friendly to use this mode during longer times of non-usage of the MCI500H.

EQ (Equalizer)

A class of electronic filter circuits designed to augment or adjust electronic or acoustic systems. Equalizers can be fixed or adjustable, active or passive. Many equalizers divide the spectrum into 3 to 12 bands. This allows each section to be either increased or decreased in amplitude without changing the response of the rest.

F

Fidelity

A term used to describe the accuracy of recording, reproduction, or general quality of audio processing. "High Fidelity" (Hi-Fi) is the goal of every designer.

FM (Frequency Modulation)

In radio broadcasting: a method of modulation in which the frequency of the carrier voltage is varied with the frequency of the modulation voltage.

Frequency

The property or condition of occurring at frequent intervals. In sound, this simply refers

to the regular occurrence of compression and rarification of air that we experience as sound.

Frequency Response

Is the range of frequencies that a speaker reproduces, lowest frequency to the highest. While the optimal normal is 20-20,000 Hz (Hertz), the range of human hearing for individuals is often much more restricted. A good full-range speaker system however, reproduces as much of this range as possible to cover all variations. Individual drivers are limited to reproduce only that part of the spectrum for which they were made, so their response is limited, but still a necessary point to consider when designing a complete sound system.

H

Hi-Fi (High Fidelity)

A method of sound reproduction that emphasizes the highest possible adherence to the exact character of the original sound. This is a principal that must be paramount in every stage of the recording, transportation, and recreation of the signal to be fully operational. It is usually the listener's equipment wherein this objective is most seriously compromised.

Hz (Hertz)

Cycles per second, named after Heinrich Hertz.

I

Impedance

The resistance to the flow of an electric current in a circuit. This is effectively the electrical load that a loudspeaker presents to the amplifier which drives it and is measured in ohms.

Incredible Surround Sound (Incr.Surr.)

An improved system that creates realistic, three-dimensional sound fields. These sound fields are usually achieved with multiple speakers that are arranged around the listener.

Input sensitivity

SPL (sound pressure level) a speaker produces, given one watt of power, measured from a one-meter distance at a typical input frequency (usually 1kHz unless otherwise noted on the speaker).

Interface

A device or protocol which facilitates the linking of any two devices or systems; or when used as a verb ('to interface'), the process of linking.

IP address

An IP (Internet Protocol) address is a unique computer address that enables electronic devices to communicate with and identify each other.

K

Kbps

Kilobits per second. A digital-data-rate measurement system which is often used with highly compressed formats such as AAC, DAB, MP3 etc. The higher the amount, the better the quality generally is.

kHz (kilo Hertz)

1000Hz or 1000 cycles per second.

L

LCD (Liquid Crystal Display)

Probably the most common way to show visual information on non-computer electronic equipment.

Lossless compression

A system for reducing the number of data bits (density) in a musical signal without corrupting the original.

M

M4A

The audio file format used by Apple in their iTunes Music Store often appears on your

system with the '.m4a' filename extension. M4A can produce better audio quality than MP3 using less physical space for the files.

MHz (Mega Hertz)

One million cycles per second.

Midrange

The middle three octaves (more or less) of the audio band, where the ear is most sensitive, usually between 160Hz-3kHz.

Mono (monaural)

The operation of an amplifier in one channel for both input and output. Can refer to an amplifier with only one channel of amplification or operating in bridged mode. For low-frequency amplification applications, it provides better phase coherence and less distortion than stereo operation.

MP3

A file format with a sound data compression system. MP3 is the abbreviation of Motion Picture Experts Group 1 (or MPEG-1) Audio Layer 3. With the MP3 format, one CD-R or CD-RW can contain about 10 times more data than a regular CD.

Mute

A control found on receivers, and some mixers or signal processing units that silences (mutes) a signal path, or output.

O

Ohm

Measure of resistance to current (impedance). The lower the impedance of a speaker, the harder it is to drive.

P

PCM (Pulse Code Modulation)

Pioneering form of digital recording.

R

RDS (Radio Data System)

RDS tuners can automatically tune in stations according to the types of music (or talk) they broadcast. RDS also enables a receiver to display text messages and even graphics (usually call letters and format information) that many FM stations include on a sub-carrier signal within their normal broadcast signal. Some RDS equipped tuners can even override with traffic alerts or emergency broadcasts, during playback of other media - CD MD, or cassette. There are other useful features too, many of which are offered by the growing number of RDS stations.

RF (radio frequency)

An alternating current or voltage with a frequency (or carrier wave) above about 100kHz. It is called radio frequency because these frequencies have a capacity to be radiated as electromagnetic waves by radio (and television) stations.

Rip (ripping)

Using a software program that "grabs" digital audio from a compact disc and transfers it to a computer hard drive. The integrity of the data is preserved, because the signal does not pass through the computer sound card, and need not be converted to an analog format. The digital-to-digital transfer creates a WAV file that can then be converted into an MP3 file.

RMS (Root Mean Square)

A formula that provides a reasonably accurate means to measure and compare continuous AC power. The use of this measure is preferred when matching system components, like amplifiers and receivers.

S

S/PDIF (SPDIF) (Sony/Philips Digital Interface)

A standard audio-file transfer-format that was developed jointly by Sony and Philips. S/

PDIF allows the transfer of digital audio signals from one device to another, without the need to convert first to analog. This prevents the quality of the digital signal degrading during transfer to analog.

Sampling rate

The precision with which a digital file describes the analog sound it represents. Basically, a lower rate produces files that sound worse and take up less drive space than those with a higher rate. CDs have a sampling rate of 44.1kHz, and DAT machines have a sampling rate of 48kHz. MiniDisc player/recorders with a built-in sampling rate converter can handle both rates.

Sensitivity

Volume that a speaker offers for a specific voltage input, expressed in decibels per watt (dB/W).

Shuffle

A feature that plays audio files (tracks) in random order.

Signal to noise ratio

Represents the difference between the level of the audio signal, and any interference. The larger the figure, the purer the sound.

SPL (sound pressure level)

An acoustic measurement of sound energy. 1 dB SPL is the smallest increment in sound level to which the average human is sensitive. Theoretically, 0 dB SPL is the threshold of human hearing while approximately 120 dB is the threshold of pain.

Stereo

Literally means solid. Usually taken to refer to two channel stereo, though developments in digital audio facilitate multichannel stereo.

Streaming

A technique for transferring data such that it can be processed as a steady and continuous stream. Streaming technologies are often used on the Internet because many users do not have fast enough access to download large

multimedia files quickly, so the client browser or plug-in can start displaying the data before the entire file has been transmitted.

Subwoofer

The extra-low frequency drive-unit (loudspeaker) that can be used to augment both stereo and surround system.

T

Treble

High frequencies at the top end of the audio band i.e. above 3kHz.

Tweeter

The drive unit (loudspeaker) that reproduces high frequency sounds.

U

UPnP (Universal Plug and Play)

Universal Plug and Play is a networking architecture developed by a consortium of companies to ensure easy connectivity between products from different vendors. UPnP devices should be able to connect to a network automatically, handling identification and other processes on the fly. The standards developed by the UPnP Forum are media-, platform-, and device-independent.

USB (universal serial bus)

A hardware interface used to connect devices such as computer audio players, digital cameras, and more. USB is UPnP enabled (also called hot-swappable), meaning that a computer does not need to be turned off when new devices are plugged in and the devices do not need to be configured. USB supports data transfer rates of up to 60MB per second (in USB 2.0).

V

VBR (variable bit rate)

With VBR, the encoder takes as much bits as it needs. So black pictures get few bits and

complex pictures get as much as they need. While this provides the best quality the final size cannot be predicted at all.

Volume

Volume is the most common word used to specify the control of relative loudness of sounds. It also pertains to the function on many electronic devices that is used to control the loudness.

W

W (wattage)

A measurement of power. In speakers, wattage is a term that indicates power-handling characteristics in dealing with electrical voltage inputs from the amplifier.

WAP (Wireless Application Protocol)

Global protocol used in some wireless devices that allows the user to view and interact with data services. Generally used as a means to view Internet web pages using the limited transmission capacity and small display screens of portable wireless devices.

WAV

A format for sound files developed jointly by Microsoft and IBM. Built into Windows 95 to XP, which made it the de facto standard for sound on PCs. WAV sound files end with a '.wav' extension and works with nearly all Windows applications that support sound.

WEP (Wired Equivalent Privacy)

All 802.11b (Wi-Fi / wireless) networks use WEP as their basic security protocol. WEP secures data transmissions using 64-bit or 128-bit encryption; however, it does not offer complete security and is usually used in conjunction with other security measures such as EAP.

Wi-Fi

Wi-Fi (Wireless Fidelity) is a wireless technology brand owned by the Wi-Fi Alliance intended to improve the interoperability of wireless local area network products based

on the IEEE 802.11 standards. Common applications for Wi-Fi include Internet and VoIP phone access, gaming, and network connectivity for consumer electronics such as televisions, DVD players, and digital cameras.

Wireless

Telecommunications using electromagnetic waves rather than wires or cable to transmit information. Wireless communication can be used for free-ranging mobile systems such as cell phones and global positioning systems (GPS), which use satellite technology. Wireless systems can also be fixed, such as LANs that provide wireless communications within a limited area (such as an office), or wireless peripherals such as mice and keyboards.

WMA (Windows Media Audio)

An audio format owned by Microsoft, is a part of Microsoft Windows Media technology. Includes Microsoft Digital Rights Management tools, Windows Media Video encoding technology, and Windows Media Audio encoding technology.

Woofers

The drive unit (loudspeaker) that reproduces the bass (low) frequencies.

WPA / WPA2 (Wi-Fi Protected Access)

A Wi-Fi standard that was designed to improve upon the security features of WEP. The technology is designed to work with existing Wi-Fi products that have been enabled with WEP (i.e. as a software upgrade to existing hardware), but the technology includes two improvements over WEP.

16 Contact information

Argentina	(54-11) 4544-2047
Australia	1300 363 391
Austria	0810 000 205
Belgium	78250145
Belarus	882000110068
Brazil	0800 701 02 03 (all except Sao Paulo)(11) 2121-0203 (Sao Paulo only)
Bulgaria	8001154424
Canada	1-888-744-5477
Chile	600 744 5477 (600-PHILIPS)
China	4008 800 008
Colombia	01 800 700 7445
Croatia	800222778
Czech Republic	800142840
Denmark	35258759
Estonia	8000100288
Finland	923113415
France	805025510
Germany	8000007520
Greece	80031221280
Hong Kong	852-2619 9663
Hungary	680018189
India	1860-180-1111
Ireland	16011777
Israel	9600900-09
Italy	800088774
Japan	0570-07-6666
Korea	080-600-6600
Latvia	80002794
Luxembourg	4066615644
Malaysia	1800 880 180
Mexico	01 800 504 6200
Netherlands	8000230076
New Zealand	0800 658 224

Norway	22708111
Pakistan	051 580 902-3
Peru	0800 00100
Philippines	(63 2) 667 9000
Poland	8003111318
Portugal	800780903
Romania	800894910
Russia Federation	(495)961-1111 (local rate)8-800-200-0880 (mobile phone - free)
Singapore	65 6882 3999
Slovakia	800004537
South Africa	(011) 471-5194
Spain	900800655
Sweden	857929100
Switzerland	844800544
Taiwan	0800 231 099
Thailand	66 2 652 8652
Turkey	0800 261 3302
Ukraine	8-800-500-69-70
United Kingdom	8003316015
United States	1-888-744-5477
Uruguay	(598-2) 619 6666
Venezuela	0800 100 4888

POWERED BY



gracenote.

Gracenote® End User License Agreement Version 20061005

This application or device contains software from Gracenote, Inc. of Emeryville, California ("Gracenote"). The software from Gracenote (the "Gracenote Software") enables this application to perform disc and/or file identification and obtain music-related information, including name, artist, track, and title information ("Gracenote Data") from online servers or embedded databases (collectively, "Gracenote Servers") and to perform other functions. You may use Gracenote Data only by means of the intended End-User functions of this application or device. You agree that you will use Gracenote Data, the Gracenote Software, and Gracenote Servers for your own personal non-commercial use only. You agree not to assign, copy, transfer, or transmit the Gracenote Software or any Gracenote Data to any third party. YOU AGREE NOT TO USE OR EXPLOIT GRACENOTE DATA, THE GRACENOTE SOFTWARE, OR GRACENOTE SERVERS, EXCEPT AS EXPRESSLY PERMITTED HEREIN.

You agree that your non-exclusive license to use the Gracenote Data, the Gracenote Software, and Gracenote Servers will terminate if you violate these restrictions. If your license terminates, you agree to cease any and all use of the Gracenote Data, the Gracenote Software, and Gracenote Servers. Gracenote reserves all rights in Gracenote Data, the Gracenote Software, and the Gracenote Servers, including all ownership rights. Under no circumstances will Gracenote become liable for any payment to you for any information that you provide. You agree that Gracenote, Inc. may enforce its rights under this Agreement against you directly in its own name.

The Gracenote service uses a unique identifier to track queries for statistical purposes. The purpose of a randomly assigned numeric identifier is to allow the Gracenote service to count queries without knowing anything about who you are. For more information, see the web page for the Gracenote Privacy Policy for the Gracenote service.

The Gracenote Software and each item of Gracenote Data are licensed to you "AS IS." Gracenote makes no representations or warranties, express or implied, regarding the accuracy of any Gracenote Data from in the Gracenote Servers. Gracenote reserves the right to delete data from the Gracenote Servers or to change data categories for any cause that Gracenote deems sufficient. No warranty is made that the Gracenote Software or Gracenote Servers are error-free or that functioning of Gracenote Software or Gracenote Servers will be uninterrupted. Gracenote is not obligated to provide you with new enhanced or additional data types or categories that Gracenote may provide in the future and is free to discontinue its services at any time.

GRACENOTE DISCLAIMS ALL WARRANTIES EXPRESS OR IMPLIED, INCLUDING, BUT NOT LIMITED TO, IMPLIED WARRANTIES OF MERCHANTABILITY, FITNESS FOR A PARTICULAR PURPOSE, TITLE, AND NON-INFRINGEMENT. GRACENOTE DOES NOT WARRANT THE RESULTS THAT WILL BE OBTAINED BY YOUR USE OF THE GRACENOTE SOFTWARE OR ANY GRACENOTE SERVER. IN NO CASE WILL GRACENOTE BE LIABLE FOR ANY CONSEQUENTIAL OR INCIDENTAL DAMAGES OR FOR ANY LOST PROFITS OR LOST REVENUES.

© Gracenote 2006

Streamium terms and conditions

Terms and Conditions of Use of your Philips Streamium-enabled Device

Congratulations on your purchase of a Philips Streamium-enabled Device ("Device"). These Terms and Conditions of Use give you the rights to use certain features on your Device relating to the streaming of content. You must agree to these Terms and Conditions of Use before using the Device. Your use of the Device constitutes your agreement to be bound by these Terms and Conditions of Use and will give you the right to access these features. If you do not agree to these Terms and Conditions of Use, you may return your Device to the point of purchase. These Terms and Conditions of Use supplement, and do not replace, any terms, conditions or disclaimers which were provided with your purchase of the Device. All such terms, conditions and disclaimers remain in full force and effect.

Eligibility for Registration.

You must be at least 14 years of age to assume the responsibilities of these Terms and Conditions of Use. If you are under 14 years of age, you may not use the Device unless one of your parents or legal guardians assumes the responsibilities of these Terms and Conditions of Use. Your use of the Device constitutes your representation that you are either 14 years of age or, if you are under 14 years of age, that your parent or legal guardian has assumed the responsibilities of these Terms and Conditions of Use.

Restrictions on Modification of your Device

Your Device provides access to certain streams of content. As a condition of obtaining access to those streams through the Device, you agree not to tamper with or otherwise modify or attempt to modify the Device in any way (including through the use of software or by making physical alterations to the Device). You agree that you will not circumvent or attempt to circumvent technological measures employed to control access to, or the rights in, any content. You agree that you will not circumvent or attempt to circumvent any copy management system by any means. You agree that you will not decipher or attempt to decipher cryptographic keys or otherwise defeat or attempt to defeat any security features implemented in the Device or in the content streams. You agree that you will not use the Device for any unauthorized purpose or in contravention of any law or regulation.

Disclaimers Regarding Content

The streams of content which are accessible through your Device are not controlled or programmed by Philips. Rather, they are provided by third parties. Think of your Device (in addition to its other features) as a form of "tuner" which allows you to receive the content broadcast by many others outside of your local area. Since the content is provided by others, PHILIPS HAS NO EDITORIAL CONTROL OVER ANY OF THAT CONTENT RECEIVED THROUGH YOUR DEVICE AND, THEREFORE IS NOT LIABLE FOR CONTENT OR ITS NATURE OR DELIVERY. PHILIPS DOES NOT ENDORSE ANY OPINIONS EXPRESSED IN ANY CONTENT RECEIVED THROUGH YOUR DEVICE. PHILIPS DOES NOT GUARANTEE THE TRUTHFULNESS, ACCURACY, RELIABILITY, COMPLETENESS OR TIMELINESS OF CONTENT. YOU AGREE THAT ANY RELIANCE ON CONTENT IS AT YOUR OWN RISK.

Limitations on Access to Streams.

Philips does not guarantee access to any particular stream or to the content contained in any stream. Philips may, in its discretion, add or remove access to any specific stream or content at any time. Some streams are accessible through arrangements with online service providers which determine which streams are listed on their directories. Although Philips will strive to provide a good selection of online service providers, Philips does not guarantee continued access to any specific online service provider. Philips may, in its discretion, add or remove access to any specific online service provider.

Rights in Content

Content may be protected by copyright laws or other intellectual property or proprietary laws. In some situations, such as use of the Device in a commercial environment, it may be necessary for you to obtain, at your own risk, a license or other authorization to use such content. You agree that, in the event such a license

or authorization is necessary, it is your responsibility to obtain any such license or authorization. You agree that you are solely liable for any damages you may incur resulting from your failure to obtain the proper license or authorization for use of the content accessible through the Device. You agree that Philips will have no liability to you with regard to your use of the content.

Changes in Features

Philips may, in its discretion, change the features of the Device, including adding features to, or removing features from, the Device. Some new features may require changes to these Terms and Conditions of Use. Your use of those new features will constitute your agreement to the revised Terms and Conditions of Use.

Software and Intellectual Property Rights

You may need to use certain software programs to use or have full access to certain features of the Device. You received certain software with the purchase of the Device and may receive other software from time to time in the future. Most of that software is contained in the Device and is not accessible to you. Some of that software is owned by Philips and some is owned by others. Your use of software owned by Philips is subject to these Terms and Conditions of Use and any applicable license agreement. Your use of software owned by others is governed by their applicable license agreements. Your use of software does not transfer any title or ownership rights in the software to you. Philips retains all its rights in software and other intellectual property, including copyrights, patent rights, and rights in its trademarks and trade names. You agree that you will not disassemble, decompile, create derivative works of, reverse engineer, modify, sublicense, distribute the software or use the software for any unauthorized purpose or in contravention of any law or regulation.

Warranty Disclaimer

PHILIPS MAKES NO REPRESENTATION OR WARRANTY, EXPRESS OR IMPLIED, THAT THE DEVICE WILL MEET YOUR REQUIREMENTS OR THAT THE USE OF THE DEVICE WILL BE UNINTERRUPTED, TIMELY, SECURE OR FREE FROM ERRORS. PHILIPS MAKES NO WARRANTY AS TO THE CONTENT CARRIED IN ANY STREAM. PHILIPS MAKES NO REPRESENTATION OR WARRANTY, EXPRESS OR IMPLIED, AS TO THE INFORMATION OR CONTENT ACCESSED THROUGH YOUR DEVICE OR TO YOUR RELIANCE ON, OR USE OF, ANY INFORMATION OR CONTENT ACCESSED THROUGH YOUR DEVICE. SPECIFIC WARRANTIES WERE PROVIDED WITH YOUR PURCHASE OF YOUR DEVICE AND THOSE WARRANTIES, INCLUDING ANY DISCLAIMERS TO THOSE WARRANTIES, CONTINUE TO APPLY. Because some jurisdictions do not permit the disclaimer of implied warranties, such disclaimers may not apply to you.

Limitation of Liability

PHILIPS WILL NOT BE LIABLE TO YOU OR TO ANY OTHER PARTY FOR ANY INDIRECT, INCIDENTAL, PUNITIVE, SPECIAL OR CONSEQUENTIAL DAMAGES (INCLUDING LOST PROFITS OR LOST SAVINGS) OR FOR LOSS OF DATA OR BUSINESS INTERRUPTION ARISING OUT OF OR RELATING TO YOUR USE OF THE DEVICE WHETHER OR NOT SUCH DAMAGES ARE BASED ON TORT, WARRANTY, CONTRACT OR ANY OTHER LEGAL THEORY - EVEN IF PHILIPS HAS BEEN ADVISED, OR IS AWARE, OF THE POSSIBILITY OF SUCH DAMAGES. IN NO EVENT WILL PHILIPS CUMULATIVE LIABILITY FOR DAMAGE (FROM ANY CAUSE WHATSOEVER) EXCEED THE AMOUNT YOU PAID FOR YOUR DEVICE.

Miscellaneous

“This agreement will be governed by the laws of the jurisdiction in which the Device was sold and you hereby consent to the non-exclusive jurisdiction of courts in the relevant country. If any provision of this agreement is invalid or unenforceable under applicable law, such provision will be deemed modified to the extent necessary to render such provision valid and enforceable and the other provisions of this agreement will remain in full force and effect. These Terms and Conditions of Use will not be governed by the United Nations Convention of Contracts for the International Sale of Goods, the application of which is hereby expressly waived.”

BY USING YOUR DEVICE, YOU REPRESENT THAT YOU HAVE READ AND UNDERSTOOD THESE TERMS AND CONDITIONS OF USE AND THAT YOU ACCEPT THEM.

NOTICE

SOFTWARE END USER LICENSE AGREEMENT

THIS SOFTWARE END USER LICENSE AGREEMENT ("THIS AGREEMENT") IS A LEGAL AND BINDING AGREEMENT BETWEEN YOU (EITHER AN INDIVIDUAL OR ENTITY) AND PHILIPS CONSUMER ELECTRONICS B.V.A DUTCH LIMITED LIABILITY COMPANY, WITH ITS PRINCIPAL OFFICE AT GLASLAAN 2, 5616 LW EINDHOVEN, THE NETHERLANDS AND ITS SUBSIDIARY COMPANIES (INDIVIDUALLY AND COLLECTIVELY "PHILIPS"). THIS AGREEMENT GIVES YOU THE RIGHT TO USE CERTAIN SOFTWARE (THE "SOFTWARE") INCLUDING USER DOCUMENTATION IN ELECTRONIC FORM WHICH MAY HAVE BEEN PROVIDED SEPARATELY OR TOGETHER WITH A PHILIPS PRODUCT (THE "DEVICE") OR A PC. BY DOWNLOADING, INSTALLING OR OTHERWISE USING THE SOFTWARE, YOU ACCEPT AND AGREE TO BE BOUND BY ALL OF THE TERMS AND CONDITIONS OF THIS AGREEMENT. IF YOU DO NOT AGREE TO THESE TERMS AND CONDITIONS, DO NOT DOWNLOAD, INSTALL OR OTHERWISE USE THE SOFTWARE. IF YOU ACQUIRED THE SOFTWARE IN TANGIBLE MEDIA E.G. CD WITHOUT THE OPPORTUNITY TO REVIEW THIS LICENSE AND DO NOT ACCEPT THESE TERMS, YOU MAY RECEIVE A FULL REFUND OF THE AMOUNT, IF ANY, THAT YOU PAID FOR THE SOFTWARE IF YOU RETURN THE SOFTWARE UNUSED WITH PROOF OF PAYMENT WITHIN 30 DAYS FROM THE DATE OF PURCHASE.

1. Grant of License. This Agreement grants you a non-exclusive, nontransferable, non-sub licensable license to install and use, on the Device or a PC, as applicable, one (1) copy of the specified version of the Software in object code format as set out in the user documentation solely for your personal use. The Software is "in use" when it is loaded into the temporary or permanent memory (i.e. RAM, hard disk, etc.) of the PC or the Device.

2. Ownership. The Software is licensed and not sold to you. This Agreement grants you only the right to use the Software, but you do not acquire any rights, express or implied, in the Software other than those specified in this Agreement. Philips and its licensors retain all right, title, and interest in and to the Software, including all patents, copyrights, trade secrets, and other intellectual property rights incorporated therein. The Software is protected by copyright laws, international treaty provisions, and other intellectual property laws. Therefore, other than as expressly set forth herein, you may not copy the Software without prior written authorization of Philips, except that you may make one (1) copy of the Software for your back-up purposes only. You may not copy any printed materials accompanying the Software, nor print more than one (1) copy of any user documentation provided in electronic form, except that you may make one (1) copy of such printed materials for your back-up purposes only.

3. License Restrictions. Except as provided otherwise herein, you shall not rent, lease, sublicense, sell, assign, loan, or otherwise transfer the Software. You shall not, and you shall not permit any third party, to reverse engineer, decompile, or disassemble the Software, except to the extent that applicable law expressly prohibits the foregoing restriction. You may not remove or destroy any product identification, copyright notices, or other proprietary markings or restrictions from the Software. All titles, trademarks, and copyright and restricted rights notices shall be reproduced on your back up copy of the Software. You may not modify or adapt the Software, merge the Software into another program or create derivative works based upon the Software.

4. Termination of certain functionality. The Software may contain components of certain licensed software including software licensed from Microsoft Corporation ("Microsoft") which implements Microsoft's digital rights management technology for Windows Media. Content providers are using the digital rights management technology for Windows Media ("WM-DRM") to protect the integrity of their content ("Secure Content") so that their intellectual property, including copyright, in such content is not misappropriated. Your Device may also use WM-DRM software to transfer or play Secure Content ("WM-DRM Software"). If the

security of such WM-DRM Software is compromised, Microsoft may revoke (either on its own or upon the request of the owners of Secure Content (“Secure Content Owners”)) the WM-DRM Software’s right to acquire new licenses to copy, store, transfer, display and/or play Secure Content. Revocation does not alter the WM-DRM Software’s ability to play unprotected content. A list of revoked WM-DRM Software is sent to your PC and/or your Device whenever you download a license for Secure Content. Microsoft may, in conjunction with such license, also download revocation lists onto your Device on behalf of Secure Content Owners, which may disable your Device’s ability to copy, store, display, transfer, and/or play Secure Content. Secure Content Owners may also require you to upgrade some of the WM-DRM components distributed with this Software (“WM-DRM Upgrades”) before accessing their content. When you attempt to play Secure Content, WM-DRM Software built by Microsoft will notify you that a WM-DRM Upgrade is required and then ask for your consent before the WM-DRM Upgrade is downloaded. WM-DRM Software built by Philips may do the same. If you decline the upgrade, you will not be able to access Secure Content that requires the WM-DRM Upgrade; however, you will still be able to access unprotected content and Secure Content that does not require the upgrade. WM-DRM features that access the Internet, such as acquiring new licenses and/or performing a required WM-DRM Upgrade, can be switched off. When these features are switched off, you will still be able to play Secure Content if you have a valid license for such content already stored on your Device. However, you will not be able to use certain of the WM-DRM Software features that require Internet access such as the ability to download content that requires the WM-DRM Upgrade. All title and intellectual property rights in and to the Secure Content is the property of the respective Secure Content owners and may be protected by applicable copyright or other intellectual property laws and treaties. This Agreement grants you no rights to use such Secure Content. **To summarize, if the Software contains Microsoft WM-DRM components – Secure Content you desire to download, copy, store, display, transfer, and/or play is protected by the Microsoft WM-DRM components of the Software. Microsoft, Secure Content Owners, or Secure Content distributors may deny you access, or restrict your access, to Secure Content even after you have paid for, and/or obtained, it. Neither your consent nor the consent or approval of Philips is necessary for any of them to deny, withhold or otherwise restrict your access to Secure Content. Philips does not guaranty that you will be able to download, copy, store, display, transfer, and/or play Secure Content.**

5. Open Source Software. (a) This software may contain components that are subject to open-source terms, as stated in the documentation accompanying the Device. This Agreement does not apply to this software as such. (b) Your license rights under this Agreement do not include any right or license to use, distribute or create derivative works of the Software in any manner that would subject the Software to Open Source Terms. “Open Source Terms” means the terms of any license that directly or indirectly (1) create, or purport to create, obligations for Philips with respect to the Software and/or derivative works thereof; or (2) grant, or purport to grant, to any third party any rights or immunities under intellectual property or proprietary rights in the Software or derivative works thereof.

6. Termination. This Agreement shall be effective upon installation or first use of the Software and shall terminate (i) at the discretion of Philips, due to your failure to comply with any term of this Agreement; or (ii) upon destruction of all copies of the Software and related materials provided to you by Philips hereunder. Philips’s rights and your obligations shall survive the termination of this Agreement.

7. Upgrades. Philips may, at its sole option, make upgrades to the Software available by general posting on a website or by any other means or methods. Such upgrades may be made available pursuant to the terms of this Agreement or the release of such upgrades to you may be subject to your acceptance of another agreement.

8. Support Services. Philips is not obligated to provide technical or other support (“Support Services”) for the Software. If Philips does provide you with Support Services, these will be governed by separate terms to be agreed between you and Philips.

9. Limited Software Warranty. Philips provides the Software 'as is' and without any warranty except that the Software will perform substantially in accordance with the documentation accompanying the Software for a period of one year after your first download, installation or use of the Software, whichever occurs first. Philips' entire liability and your exclusive remedy for breach of this warranty shall be, at Philips' option, either (i) return of the price paid by you for the Software (if any); or (b) repair or replacement of the Software that does not meet the warranty set forth herein and that is returned to Philips with a copy of your receipt. This limited warranty shall be void if failure of the Software has resulted from any accident, abuse, misuse or wrongful application. Any replacement Software will be warranted for the remainder of the original warranty period or thirty (30) days, whichever is longer. This limited warranty shall not apply to you if the Software was provided to you free of charge on an evaluation only basis.

10. NO OTHER WARRANTIES. EXCEPT AS SET FORTH ABOVE, PHILIPS AND ITS LICENSORS DO NOT WARRANT THAT THE SOFTWARE WILL OPERATE ERROR FREE OR UNINTERRUPTED, OR WILL MEET YOUR REQUIREMENTS. YOU ASSUME ALL RESPONSIBILITIES FOR SELECTION OF THE SOFTWARE TO ACHIEVE YOUR INTENDED RESULTS, AND FOR THE INSTALLATION OF, USE OF, AND RESULTS OBTAINED FROM THE SOFTWARE. TO THE MAXIMUM EXTENT PERMITTED BY APPLICABLE LAW, PHILIPS AND ITS LICENSORS DISCLAIM ALL WARRANTIES AND CONDITIONS, WHETHER EXPRESS OR IMPLIED, INCLUDING BUT NOT LIMITED TO THE IMPLIED WARRANTIES OF MERCHANTABILITY, FITNESS FOR A PARTICULAR PURPOSE, AND ACCURACY OR COMPLETENESS OF RESULTS WITH RESPECT TO THE SOFTWARE AND THE ACCOMPANYING MATERIALS. THERE IS NO WARRANTY AGAINST INFRINGEMENT. PHILIPS DOES NOT WARRANT THAT YOU WILL BE ABLE TO DOWNLOAD, COPY, STORE, DISPLAY, TRANSFER, AND/OR PLAY SECURE CONTENT.

11. LIMITATION OF LIABILITY. UNDER NO CIRCUMSTANCES WILL PHILIPS OR ITS LICENSORS BE LIABLE FOR ANY CONSEQUENTIAL, SPECIAL, INDIRECT, INCIDENTAL OR PUNITIVE DAMAGES WHATSOEVER, INCLUDING, WITHOUT LIMITATION, DAMAGES FOR LOSS OF PROFITS OR REVENUES, BUSINESS INTERRUPTION, LOSS OF BUSINESS INFORMATION, LOSS OF DATA, LOSS OF USE OR OTHER PECUNIARY LOSS, EVEN IF PHILIPS OR ITS LICENSORS HAVE BEEN ADVISED OF THE POSSIBILITY OF SUCH DAMAGES. IN NO EVENT SHALL PHILIPS' OR ITS LICENSORS' AGGREGATE LIABILITY FOR DAMAGES ARISING OUT OF THIS AGREEMENT EXCEED THE GREATER OF THE PRICE ACTUALLY PAID BY YOU FOR THE SOFTWARE OR FIVE TEN POUNDS STERLINGUS DOLLARS (510.00).

12. Trademarks. Certain of the product and Philips names used in this Agreement, the Software, and the printed user documentation may constitute trademarks of the Philips, its licensors or other third parties. You are not authorized to use any such trademarks.

13. Export Administration. You agree that you will not directly or indirectly, export or re-export the Software to any country for which the United States Export Administration Act, or any similar United States law or regulation requires an export license or other U.S. Government approval, unless the appropriate export license or approval has first been obtained. By downloading or installing the Software you agree to abide by this Export provision.

14. Governing law. This Agreement is governed by the laws of your country of residence, without reference to its conflict of laws principles. Any dispute between you and Philips regarding this Agreement shall be subject to the non-exclusive jurisdiction of the courts of your country of residence.

15. General. This Agreement contains the entire agreement between you and Philips and supersedes any prior representation, undertaking or other communication or advertising with respect to the Software and user documentation. If any part of this Agreement is held invalid, the remainder of this Agreement will continue in full force and effect. This Agreement shall not prejudice the statutory rights of any party dealing as a consumer.

GPL Package / LGPL Library written offers

This product contains

Linux Kernel (linux-2.4.27-vrs1)
Linux kernel drivers developed by NXP Semiconductors
ethtool
lsof
modutils
procps
smartmontools
libstdc++
libgcc
busybox
wireless_tools

made available under the GNU GPL license version 2 (hereafter called the Program) and the GNU LGPL license version 2.1 (hereafter called the Library).

Philips Electronics Hong Kong Ltd. Hereby offers to deliver or make available, upon request, for a charge no more than the cost of physically performing source distribution, a complete machine-readable copy of the corresponding source code of the Program or Library on a medium customary used for software interchange. Please contact: Head of Development BLC Audio PDC Development 5/F., Philips Electronics Building, 5 Science Part East Avenue, Hong Kong Science Park, Shatin, Hong Kong.

This offer is valid for a period of three years after the date of purchase of this product.

GNU GENERAL PUBLIC LICENSE
Version 2, June 1991

Copyright (C) 1989, 1991 Free Software Foundation, Inc.,
51 Franklin Street, Fifth Floor, Boston, MA 02110-1301 USA
Everyone is permitted to copy and distribute verbatim copies
of this license document, but changing it is not allowed.

Preamble

The licenses for most software are designed to take away your freedom to share and change it. By contrast, the GNU General Public License is intended to guarantee your freedom to share and change free software--to make sure the software is free for all its users. This General Public License applies to most of the Free Software Foundation's software and to any other program whose authors commit to using it. (Some other Free Software Foundation software is covered by the GNU Lesser General Public License instead.) You can apply it to your programs, too.

When we speak of free software, we are referring to freedom, not price. Our General Public Licenses are designed to make sure that you have the freedom to distribute copies of free software (and charge for this service if you wish), that you receive source code or can get it if you want it, that you can change the software or use pieces of it in new free programs; and that you know you can do these things.

To protect your rights, we need to make restrictions that forbid anyone to deny you these rights or to ask you to surrender the rights. These restrictions translate to certain responsibilities for you if you distribute copies of the software, or if you modify it.

For example, if you distribute copies of such a program, whether gratis or for a fee, you must give the recipients all the rights that you have. You must make sure that they, too, receive or can get the source code. And you must show them these terms so they know their rights.

We protect your rights with two steps: (1) copyright the software, and (2) offer you this license which gives you legal permission to copy, distribute and/or modify the software.

Also, for each author's protection and ours, we want to make certain that everyone understands that there is no warranty for this free software. If the software is modified by someone else and passed on, we want its recipients to know that what they have is not the original, so that any problems introduced by others will not reflect on the original authors' reputations.

Finally, any free program is threatened constantly by software patents. We wish to avoid the danger that redistributors of a free program will individually obtain patent licenses, in effect making the program proprietary. To prevent this, we have made it clear that any patent must be licensed for everyone's free use or not licensed at all.

The precise terms and conditions for copying, distribution and modification follow.

GNU GENERAL PUBLIC LICENSE
TERMS AND CONDITIONS FOR COPYING, DISTRIBUTION AND MODIFICATION

0. This License applies to any program or other work which contains a notice placed by the copyright holder saying it may be distributed under the terms of this General Public License. The "Program", below, refers to any such program or work, and a "work based on the Program" means either the Program or any derivative work under copyright law: that is to say, a work containing the Program or a portion of it, either verbatim or with modifications and/or translated into another language. (Hereinafter, translation is included without limitation in the term "modification".) Each licensee is addressed as "you".

Activities other than copying, distribution and modification are not covered by this License; they are outside its scope. The act of running the Program is not restricted, and the output from the Program is covered only if its contents constitute a work based on the Program (independent of having been made by running the Program). Whether that is true depends on what the Program does.

1. You may copy and distribute verbatim copies of the Program's source code as you receive it, in any medium, provided that you conspicuously and appropriately publish on each copy an appropriate copyright notice and disclaimer of warranty; keep intact all the notices that refer to this License and to the absence of any warranty; and give any other recipients of the Program a copy of this License along with the Program.

You may charge a fee for the physical act of transferring a copy, and you may at your option offer warranty protection in exchange for a fee.

2. You may modify your copy or copies of the Program or any portion of it, thus forming a work based on the Program, and copy and distribute such modifications or work under the terms of Section 1 above, provided that you also meet all of these conditions:

a) You must cause the modified files to carry prominent notices stating that you changed the files and the date of any change.

b) You must cause any work that you distribute or publish, that in whole or in part contains or is derived from the Program or any part thereof, to be licensed as a whole at no charge to all third parties under the terms of this License.

c) If the modified program normally reads commands interactively when run, you must cause it, when started running for such interactive use in the most ordinary way, to print or display an announcement including an appropriate copyright notice and a notice that there is no warranty (or else, saying that you provide a warranty) and that users may redistribute the program under these conditions, and telling the user how to view a copy of this License. (Exception: if the Program itself is interactive but does not normally print such an announcement, your work based on the Program is not required to print an announcement.)

These requirements apply to the modified work as a whole. If identifiable sections of that work are not derived from the Program, and can be reasonably considered independent and separate works in themselves, then this License, and its terms, do not apply to those sections when you distribute them as separate works. But when you distribute the same sections as part of a whole which is a work based on the Program, the distribution of the whole must be on the terms of this License, whose permissions for other licensees extend to the entire whole, and thus to each and every part regardless of who wrote it.

Thus, it is not the intent of this section to claim rights or contest your rights to work written entirely by you; rather, the intent is to exercise the right to control the distribution of derivative or collective works based on the Program.

In addition, mere aggregation of another work not based on the Program with the Program (or with a work based on the Program) on a volume of a storage or distribution medium does not bring the other work under the scope of this License.

3. You may copy and distribute the Program (or a work based on it, under Section 2) in object code or executable form under the terms of Sections 1 and 2 above provided that you also do one of the following:

a) Accompany it with the complete corresponding machine-readable source code, which must be distributed under the terms of Sections 1 and 2 above on a medium customarily used for software interchange;

or,

b) Accompany it with a written offer, valid for at least three years, to give any third party, for a charge no more than your cost of physically performing source distribution, a complete machine-readable copy of the corresponding source code, to be distributed under the terms of Sections 1 and 2 above on a medium customarily used for software interchange; or,

c) Accompany it with the information you received as to the offer to distribute corresponding source code. (This alternative is allowed only for noncommercial distribution and only if you received the program in object code or executable form with such an offer, in accord with Subsection b above.)

The source code for a work means the preferred form of the work for making modifications to it. For an executable work, complete source code means all the source code for all modules it contains, plus any associated interface definition files, plus the scripts used to control compilation and installation of the executable. However, as a

special exception, the source code distributed need not include anything that is normally distributed (in either source or binary form) with the major components (compiler, kernel, and so on) of the operating system on which the executable runs, unless that component itself accompanies the executable.

If distribution of executable or object code is made by offering access to copy from a designated place, then offering equivalent access to copy the source code from the same place counts as distribution of the source code, even though third parties are not compelled to copy the source along with the object code.

4. You may not copy, modify, sublicense, or distribute the Program except as expressly provided under this License. Any attempt otherwise to copy, modify, sublicense or distribute the Program is void, and will automatically terminate your rights under this License. However, parties who have received copies, or rights, from you under this License will not have their licenses terminated so long as such parties remain in full compliance.

5. You are not required to accept this License, since you have not signed it. However, nothing else grants you permission to modify or distribute the Program or its derivative works. These actions are prohibited by law if you do not accept this License. Therefore, by modifying or distributing the Program (or any work based on the Program), you indicate your acceptance of this License to do so, and all its terms and conditions for copying, distributing or modifying the Program or works based on it.

6. Each time you redistribute the Program (or any work based on the Program), the recipient automatically receives a license from the original licensor to copy, distribute or modify the Program subject to these terms and conditions. You may not impose any further restrictions on the recipients' exercise of the rights granted herein. You are not responsible for enforcing compliance by third parties to this License.

7. If, as a consequence of a court judgment or allegation of patent infringement or for any other reason (not limited to patent issues), conditions are imposed on you (whether by court order, agreement or otherwise) that contradict the conditions of this License, they do not excuse you from the conditions of this License. If you cannot distribute so as to satisfy simultaneously your obligations under this License and any other pertinent obligations, then as a consequence you may not distribute the Program at all. For example, if a patent license would not permit royalty-free redistribution of the Program by all those who receive copies directly or indirectly through you, then the only way you could satisfy both it and this License would be to refrain entirely from distribution of the Program.

If any portion of this section is held invalid or unenforceable under any particular circumstance, the balance of the section is intended to apply and the section as a whole is intended to apply in other circumstances.

It is not the purpose of this section to induce you to infringe any patents or other property right claims or to contest validity of any such claims; this section has the sole purpose of protecting the integrity of the free software distribution system, which is implemented by public license practices. Many people have made generous contributions to the wide range of software distributed through that system in reliance on consistent application of that system; it is up to the author/donor to decide if he or she is willing to distribute software through any other system and a licensee cannot impose that choice.

This section is intended to make thoroughly clear what is believed to be a consequence of the rest of this License.

8. If the distribution and/or use of the Program is restricted in certain countries either by patents or by copyrighted interfaces, the original copyright holder who places the Program under this License may add an explicit geographical distribution limitation excluding those countries, so that distribution is permitted only in or among countries not thus excluded. In such case, this License incorporates the limitation as if written in the body of this License.

9. The Free Software Foundation may publish revised and/or new versions of the General Public License from time to time. Such new versions will be similar in spirit to the present version, but may differ in detail to address new problems or concerns.

Each version is given a distinguishing version number. If the Program specifies a version number of this License which applies to it and "any later version", you have the option of following the terms and conditions either of that version or of any later version published by the Free Software Foundation. If the Program does not specify a version number of this License, you may choose any version ever published by the Free Software Foundation.

10. If you wish to incorporate parts of the Program into other free programs whose distribution conditions are different, write to the author to ask for permission. For software which is copyrighted by the Free Software Foundation, write to the Free Software Foundation; we sometimes make exceptions for this. Our decision will be guided by the two goals of preserving the free status of all derivatives of our free software and of promoting the sharing and reuse of software generally.

NO WARRANTY

11. BECAUSE THE PROGRAM IS LICENSED FREE OF CHARGE, THERE IS NO WARRANTY FOR THE PROGRAM, TO THE EXTENT PERMITTED BY APPLICABLE LAW. EXCEPT WHEN OTHERWISE STATED IN WRITING THE COPYRIGHT HOLDERS AND/OR OTHER PARTIES PROVIDE THE PROGRAM "AS IS" WITHOUT WARRANTY OF ANY KIND, EITHER EXPRESSED OR IMPLIED, INCLUDING, BUT NOT LIMITED TO, THE IMPLIED WARRANTIES OF MERCHANTABILITY AND FITNESS FOR A PARTICULAR PURPOSE. THE ENTIRE RISK AS TO THE QUALITY AND PERFORMANCE OF THE PROGRAM IS WITH YOU. SHOULD THE PROGRAM PROVE DEFECTIVE, YOU ASSUME THE COST OF ALL NECESSARY SERVICING, REPAIR OR CORRECTION.

12. IN NO EVENT UNLESS REQUIRED BY APPLICABLE LAW OR AGREED TO IN WRITING WILL ANY COPYRIGHT HOLDER, OR ANY OTHER PARTY WHO MAY MODIFY AND/OR REDISTRIBUTE THE PROGRAM AS PERMITTED ABOVE, BE LIABLE TO YOU FOR DAMAGES, INCLUDING ANY GENERAL, SPECIAL, INCIDENTAL OR CONSEQUENTIAL DAMAGES ARISING OUT OF THE USE OR INABILITY TO USE THE PROGRAM (INCLUDING BUT NOT LIMITED TO LOSS OF DATA OR DATA BEING RENDERED INACCURATE OR LOSSES SUSTAINED BY YOU OR THIRD PARTIES OR A FAILURE OF THE PROGRAM TO OPERATE WITH ANY

OTHER PROGRAMS), EVEN IF SUCH HOLDER OR OTHER PARTY HAS BEEN ADVISED OF THE POSSIBILITY OF SUCH DAMAGES.

END OF TERMS AND CONDITIONS

How to Apply These Terms to Your New Programs

If you develop a new program, and you want it to be of the greatest possible use to the public, the best way to achieve this is to make it free software which everyone can redistribute and change under these terms.

To do so, attach the following notices to the program. It is safest to attach them to the start of each source file to most effectively convey the exclusion of warranty; and each file should have at least the "copyright" line and a pointer to where the full notice is found.

<one line to give the program's name and a brief idea of what it does.>

Copyright (C) <year> <name of author>

This program is free software; you can redistribute it and/or modify it under the terms of the GNU General Public License as published by the Free Software Foundation; either version 2 of the License, or (at your option) any later version.

This program is distributed in the hope that it will be useful, but WITHOUT ANY WARRANTY; without even the implied warranty of MERCHANTABILITY or FITNESS FOR A PARTICULAR PURPOSE. See the GNU General Public License for more details.

You should have received a copy of the GNU General Public License along

with this program; if not, write to the Free Software Foundation, Inc.,

51 Franklin Street, Fifth Floor, Boston, MA 02110-1301 USA.

Also add information on how to contact you by electronic and paper mail.

If the program is interactive, make it output a short notice like this when it starts in an interactive mode:

Gnomovision version 69, Copyright (C) year name of author

Gnomovision comes with ABSOLUTELY NO WARRANTY; for details type `show w'.

This is free software, and you are welcome to redistribute it under certain conditions; type `show c' for details.

The hypotheticalal commands `show w' and `show c' should show the appropriate parts of the General Public License. Of course, the commands you use may

be called something other than `show w' and `show c'; they could even be mouse-clicks or menu items--whatever suits your program.

You should also get your employer (if you work as a programmer) or your school, if any, to sign a "copyright disclaimer" for the program, if necessary. Here is a sample; alter the names:

Yoyodyne, Inc., hereby disclaims all copyright interest in the program 'Gnomovision' (which makes passes at compilers) written by James Hacker.

<signature of Ty Coon>, 1 April 1989

Ty Coon, President of Vice

This General Public License does not permit incorporating your program into proprietary programs. If your program is a subroutine library, you may consider it more useful to permit linking proprietary applications with the library. If this is what you want to do, use the GNU Lesser General Public License instead of this License.

glibc
uclibc
uclibc
(library in dynamic link)
OpenRTSP
LibMMS

GNU LESSER GENERAL PUBLIC LICENSE
Version 2.1, February 1999

Copyright (C) 1991, 1999 Free Software Foundation, Inc.
51 Franklin Street, Fifth Floor, Boston, MA 02110-1301 USA
Everyone is permitted to copy and distribute verbatim copies
of this license document, but changing it is not allowed.

[This is the first released version of the Lesser GPL. It also counts
as the successor of the GNU Library Public License, version 2, hence
the version number 2.1.]

Preamble

The licenses for most software are designed to take away your freedom to share and change it. By contrast, the GNU General Public Licenses are intended to guarantee your freedom to share and change free software--to make sure the software is free for all its users.

This license, the Lesser General Public License, applies to some specially designated software packages--typically libraries--of the Free Software Foundation and other authors who decide to use it. You can use it too, but we suggest you first think carefully about whether this license or the ordinary General Public License is the better strategy to use in any particular case, based on the explanations below.

When we speak of free software, we are referring to freedom of use, not price. Our General Public Licenses are designed to make sure that you have the freedom to distribute copies of free software (and charge for this service if you wish); that you receive source code or can get it if you want it; that you can change the software and use pieces of it in new free programs; and that you are informed that you can do these things.

To protect your rights, we need to make restrictions that forbid distributors to deny you these rights or to ask you to surrender these rights. These restrictions translate to certain responsibilities for you if you distribute copies of the library or if you modify it.

For example, if you distribute copies of the library, whether gratis or for a fee, you must give the recipients all the rights that we gave you. You must make sure that they, too, receive or can get the source code. If you link other code with the library, you must provide complete object files to the recipients, so that they can relink them

with the library after making changes to the library and recompiling it. And you must show them these terms so they know their rights.

We protect your rights with a two-step method: (1) we copyright the library, and (2) we offer you this license, which gives you legal permission to copy, distribute and/or modify the library.

To protect each distributor, we want to make it very clear that there is no warranty for the free library. Also, if the library is modified by someone else and passed on, the recipients should know that what they have is not the original version, so that the original author's reputation will not be affected by problems that might be introduced by others.

Finally, software patents pose a constant threat to the existence of any free program. We wish to make sure that a company cannot effectively restrict the users of a free program by obtaining a restrictive license from a patent holder. Therefore, we insist that any patent license obtained for a version of the library must be consistent with the full freedom of use specified in this license.

Most GNU software, including some libraries, is covered by the ordinary GNU General Public License. This license, the GNU Lesser General Public License, applies to certain designated libraries, and is quite different from the ordinary General Public License. We use this license for certain libraries in order to permit linking those libraries into non-free programs.

When a program is linked with a library, whether statically or using a shared library, the combination of the two is legally speaking a combined work, a derivative of the original library. The ordinary General Public License therefore permits such linking only if the entire combination fits its criteria of freedom. The Lesser General Public License permits more lax criteria for linking other code with the library.

We call this license the "Lesser" General Public License because it does less to protect the user's freedom than the ordinary General Public License. It also provides other free software developers less of an advantage over competing non-free programs. These disadvantages are the reason we use the ordinary General Public License for many libraries. However, the Lesser license provides advantages in certain special circumstances.

For example, on rare occasions, there may be a special need to encourage the widest possible use of a certain library, so that it becomes

a de-facto standard. To achieve this, non-free programs must be allowed to use the library. A more frequent case is that a free library does the same job as widely used non-free libraries. In this case, there is little to gain by limiting the free library to free software only, so we use the Lesser General Public License.

In other cases, permission to use a particular library in non-free programs enables a greater number of people to use a large body of free software. For example, permission to use the GNU C Library in non-free programs enables many more people to use the whole GNU operating system, as well as its variant, the GNU/Linux operating system.

Although the Lesser General Public License is less protective of the users' freedom, it does ensure that the user of a program that is linked with the library has the freedom and the wherewithal to run that program using a modified version of the library.

The precise terms and conditions for copying, distribution and modification follow. Pay close attention to the difference between a "work based on the library" and a "work that uses the library". The former contains code derived from the library, whereas the latter must be combined with the library in order to run.

GNU LESSER GENERAL PUBLIC LICENSE
TERMS AND CONDITIONS FOR COPYING, DISTRIBUTION AND MODIFICATION

0. This License Agreement applies to any software library or other program which contains a notice placed by the copyright holder or other authorized party saying it may be distributed under the terms of this Lesser General Public License (also called "this License"). Each licensee is addressed as "you".

A "library" means a collection of software functions and/or data prepared so as to be conveniently linked with application programs (which use some of those functions and data) to form executables.

The "Library", below, refers to any such software library or work which has been distributed under these terms. A "work based on the Library" means either the Library or any derivative work under copyright law: that is to say, a work containing the Library or a portion of it, either verbatim or with modifications and/or translated straightforwardly into another language. (Hereinafter, translation is included without limitation in the term "modification".)

"Source code" for a work means the preferred form of the work for making modifications to it. For a library, complete source code means all the source code for all modules it contains, plus any associated interface definition files, plus the scripts used to control compilation and installation of the library.

Activities other than copying, distribution and modification are not covered by this License; they are outside its scope. The act of running a program using the Library is not restricted, and output from such a program is covered only if its contents constitute a work based on the Library (independent of the use of the Library in a tool for writing it). Whether that is true depends on what the Library does and what the program that uses the Library does.

1. You may copy and distribute verbatim copies of the Library's complete source code as you receive it, in any medium, provided that you conspicuously and appropriately publish on each copy an appropriate copyright notice and disclaimer of warranty; keep intact all the notices that refer to this License and to the absence of any warranty; and distribute a copy of this License along with the Library.

You may charge a fee for the physical act of transferring a copy, and you may at your option offer warranty protection in exchange for a fee.

2. You may modify your copy or copies of the Library or any portion of it, thus forming a work based on the Library, and copy and distribute such modifications or work under the terms of Section 1 above, provided that you also meet all of these conditions:

- a) The modified work must itself be a software library.
- b) You must cause the files modified to carry prominent notices stating that you changed the files and the date of any change.

c) You must cause the whole of the work to be licensed at no charge to all third parties under the terms of this License.

d) If a facility in the modified Library refers to a function or a table of data to be supplied by an application program that uses the facility, other than as an argument passed when the facility is invoked, then you must make a good faith effort to ensure that, in the event an application does not supply such function or table, the facility still operates, and performs whatever part of its purpose remains meaningful.

(For example, a function in a library to compute square roots has a purpose that is entirely well-defined independent of the application. Therefore, Subsection 2d requires that any application-supplied function or table used by this function must be optional: if the application does not supply it, the square root function must still compute square roots.)

These requirements apply to the modified work as a whole. If identifiable sections of that work are not derived from the Library, and can be reasonably considered independent and separate works in themselves, then this License, and its terms, do not apply to those sections when you distribute them as separate works. But when you distribute the same sections as part of a whole which is a work based on the Library, the distribution of the whole must be on the terms of this License, whose permissions for other licensees extend to the entire whole, and thus to each and every part regardless of who wrote it.

Thus, it is not the intent of this section to claim rights or contest your rights to work written entirely by you; rather, the intent is to exercise the right to control the distribution of derivative or collective works based on the Library.

In addition, mere aggregation of another work not based on the Library with the Library (or with a work based on the Library) on a volume of a storage or distribution medium does not bring the other work under the scope of this License.

3. You may opt to apply the terms of the ordinary GNU General Public License instead of this License to a given copy of the Library. To do this, you must alter all the notices that refer to this License, so that they refer to the ordinary GNU General Public License, version 2, instead of to this License. (If a newer version than version 2 of the ordinary GNU General Public License has appeared, then you can specify that version instead if you wish.) Do not make any other change in these notices.

Once this change is made in a given copy, it is irreversible for that copy, so the ordinary GNU General Public License applies to all subsequent copies and derivative works made from that copy.

This option is useful when you wish to copy part of the code of the Library into a program that is not a library.

4. You may copy and distribute the Library (or a portion or derivative of it, under Section 2) in object code or executable form under the terms of Sections 1 and 2 above provided that you accompany it with the complete corresponding machine-readable source code, which must be distributed under the terms of Sections 1 and 2 above on a medium customarily used for software interchange.

If distribution of object code is made by offering access to copy

from a designated place, then offering equivalent access to copy the source code from the same place satisfies the requirement to distribute the source code, even though third parties are not compelled to copy the source along with the object code.

5. A program that contains no derivative of any portion of the Library, but is designed to work with the Library by being compiled or linked with it, is called a "work that uses the Library". Such a work, in isolation, is not a derivative work of the Library, and therefore falls outside the scope of this License.

However, linking a "work that uses the Library" with the Library creates an executable that is a derivative of the Library (because it contains portions of the Library), rather than a "work that uses the library". The executable is therefore covered by this License. Section 6 states terms for distribution of such executables.

When a "work that uses the Library" uses material from a header file that is part of the Library, the object code for the work may be a derivative work of the Library even though the source code is not. Whether this is true is especially significant if the work can be linked without the Library, or if the work is itself a library. The threshold for this to be true is not precisely defined by law.

If such an object file uses only numerical parameters, data structure layouts and accessors, and small macros and small inline functions (ten lines or less in length), then the use of the object file is unrestricted, regardless of whether it is legally a derivative work. (Executables containing this object code plus portions of the Library will still fall under Section 6.)

Otherwise, if the work is a derivative of the Library, you may distribute the object code for the work under the terms of Section 6. Any executables containing that work also fall under Section 6, whether or not they are linked directly with the Library itself.

6. As an exception to the Sections above, you may also combine or link a "work that uses the Library" with the Library to produce a work containing portions of the Library, and distribute that work under terms of your choice, provided that the terms permit modification of the work for the customer's own use and reverse engineering for debugging such modifications.

You must give prominent notice with each copy of the work that the Library is used in it and that the Library and its use are covered by this License. You must supply a copy of this License. If the work during execution displays copyright notices, you must include the copyright notice for the Library among them, as well as a reference directing the user to the copy of this License. Also, you must do one of these things:

a) Accompany the work with the complete corresponding machine-readable source code for the Library including whatever changes were used in the work (which must be distributed under Sections 1 and 2 above); and, if the work is an executable linked with the Library, with the complete machine-readable "work that uses the Library", as object code and/or source code, so that the user can modify the Library and then relink to produce a modified executable containing the modified Library. (It is understood that the user who changes the contents of definitions files in the Library will not necessarily be able to recompile the application to use the modified definitions.)

b) Use a suitable shared library mechanism for linking with the

Library. A suitable mechanism is one that (1) uses at run time a copy of the library already present on the user's computer system, rather than copying library functions into the executable, and (2) will operate properly with a modified version of the library, if the user installs one, as long as the modified version is interface-compatible with the version that the work was made with.

c) Accompany the work with a written offer, valid for at least three years, to give the same user the materials specified in Subsection 6a, above, for a charge no more than the cost of performing this distribution.

d) If distribution of the work is made by offering access to copy from a designated place, offer equivalent access to copy the above specified materials from the same place.

e) Verify that the user has already received a copy of these materials or that you have already sent this user a copy.

For an executable, the required form of the "work that uses the Library" must include any data and utility programs needed for reproducing the executable from it. However, as a special exception, the materials to be distributed need not include anything that is normally distributed (in either source or binary form) with the major components (compiler, kernel, and so on) of the operating system on which the executable runs, unless that component itself accompanies the executable.

It may happen that this requirement contradicts the license restrictions of other proprietary libraries that do not normally accompany the operating system. Such a contradiction means you cannot use both them and the Library together in an executable that you distribute.

7. You may place library facilities that are a work based on the Library side-by-side in a single library together with other library facilities not covered by this License, and distribute such a combined library, provided that the separate distribution of the work based on the Library and of the other library facilities is otherwise permitted, and provided that you do these two things:

a) Accompany the combined library with a copy of the same work based on the Library, uncombined with any other library facilities. This must be distributed under the terms of the Sections above.

b) Give prominent notice with the combined library of the fact that part of it is a work based on the Library, and explaining where to find the accompanying uncombined form of the same work.

8. You may not copy, modify, sublicense, link with, or distribute the Library except as expressly provided under this License. Any attempt otherwise to copy, modify, sublicense, link with, or distribute the Library is void, and will automatically terminate your rights under this License. However, parties who have received copies, or rights, from you under this License will not have their licenses terminated so long as such parties remain in full compliance.

9. You are not required to accept this License, since you have not signed it. However, nothing else grants you permission to modify or distribute the Library or its derivative works. These actions are prohibited by law if you do not accept this License. Therefore, by modifying or distributing the Library (or any work based on the Library), you indicate your acceptance of this License to do so, and

all its terms and conditions for copying, distributing or modifying the Library or works based on it.

10. Each time you redistribute the Library (or any work based on the Library), the recipient automatically receives a license from the original licensor to copy, distribute, link with or modify the Library subject to these terms and conditions. You may not impose any further restrictions on the recipients' exercise of the rights granted herein. You are not responsible for enforcing compliance by third parties with this License.

11. If, as a consequence of a court judgment or allegation of patent infringement or for any other reason (not limited to patent issues), conditions are imposed on you (whether by court order, agreement or otherwise) that contradict the conditions of this License, they do not excuse you from the conditions of this License. If you cannot distribute so as to satisfy simultaneously your obligations under this License and any other pertinent obligations, then as a consequence you may not distribute the Library at all. For example, if a patent license would not permit royalty-free redistribution of the Library by all those who receive copies directly or indirectly through you, then the only way you could satisfy both it and this License would be to refrain entirely from distribution of the Library.

If any portion of this section is held invalid or unenforceable under any particular circumstance, the balance of the section is intended to apply, and the section as a whole is intended to apply in other circumstances.

It is not the purpose of this section to induce you to infringe any patents or other property right claims or to contest validity of any such claims; this section has the sole purpose of protecting the integrity of the free software distribution system which is implemented by public license practices. Many people have made generous contributions to the wide range of software distributed through that system in reliance on consistent application of that system; it is up to the author/donor to decide if he or she is willing to distribute software through any other system and a licensee cannot impose that choice.

This section is intended to make thoroughly clear what is believed to be a consequence of the rest of this License.

12. If the distribution and/or use of the Library is restricted in certain countries either by patents or by copyrighted interfaces, the original copyright holder who places the Library under this License may add an explicit geographical distribution limitation excluding those countries, so that distribution is permitted only in or among countries not thus excluded. In such case, this License incorporates the limitation as if written in the body of this License.

13. The Free Software Foundation may publish revised and/or new versions of the Lesser General Public License from time to time. Such new versions will be similar in spirit to the present version, but may differ in detail to address new problems or concerns.

Each version is given a distinguishing version number. If the Library specifies a version number of this License which applies to it and "any later version", you have the option of following the terms and conditions either of that version or of any later version published by the Free Software Foundation. If the Library does not specify a

license version number, you may choose any version ever published by the Free Software Foundation.

14. If you wish to incorporate parts of the Library into other free programs whose distribution conditions are incompatible with these, write to the author to ask for permission. For software which is copyrighted by the Free Software Foundation, write to the Free Software Foundation; we sometimes make exceptions for this. Our decision will be guided by the two goals of preserving the free status of all derivatives of our free software and of promoting the sharing and reuse of software generally.

NO WARRANTY

15. BECAUSE THE LIBRARY IS LICENSED FREE OF CHARGE, THERE IS NO WARRANTY FOR THE LIBRARY, TO THE EXTENT PERMITTED BY APPLICABLE LAW. EXCEPT WHEN OTHERWISE STATED IN WRITING THE COPYRIGHT HOLDERS AND/OR OTHER PARTIES PROVIDE THE LIBRARY "AS IS" WITHOUT WARRANTY OF ANY KIND, EITHER EXPRESSED OR IMPLIED, INCLUDING, BUT NOT LIMITED TO, THE IMPLIED WARRANTIES OF MERCHANTABILITY AND FITNESS FOR A PARTICULAR PURPOSE. THE ENTIRE RISK AS TO THE QUALITY AND PERFORMANCE OF THE LIBRARY IS WITH YOU. SHOULD THE LIBRARY PROVE DEFECTIVE, YOU ASSUME THE COST OF ALL NECESSARY SERVICING, REPAIR OR CORRECTION.

16. IN NO EVENT UNLESS REQUIRED BY APPLICABLE LAW OR AGREED TO IN WRITING WILL ANY COPYRIGHT HOLDER, OR ANY OTHER PARTY WHO MAY MODIFY AND/OR REDISTRIBUTE THE LIBRARY AS PERMITTED ABOVE, BE LIABLE TO YOU FOR DAMAGES, INCLUDING ANY GENERAL, SPECIAL, INCIDENTAL OR CONSEQUENTIAL DAMAGES ARISING OUT OF THE USE OR INABILITY TO USE THE LIBRARY (INCLUDING BUT NOT LIMITED TO LOSS OF DATA OR DATA BEING RENDERED INACCURATE OR LOSSES SUSTAINED BY YOU OR THIRD PARTIES OR A FAILURE OF THE LIBRARY TO OPERATE WITH ANY OTHER SOFTWARE), EVEN IF SUCH HOLDER OR OTHER PARTY HAS BEEN ADVISED OF THE POSSIBILITY OF SUCH DAMAGES.

END OF TERMS AND CONDITIONS

How to Apply These Terms to Your New Libraries

If you develop a new library, and you want it to be of the greatest possible use to the public, we recommend making it free software that everyone can redistribute and change. You can do so by permitting redistribution under these terms (or, alternatively, under the terms of the ordinary General Public License).

To apply these terms, attach the following notices to the library. It is safest to attach them to the start of each source file to most effectively convey the exclusion of warranty; and each file should have at least the "copyright" line and a pointer to where the full notice is found.

<one line to give the library's name and a brief idea of what it does.>

Copyright (C) <year> <name of author>

This library is free software; you can redistribute it and/or modify it under the terms of the GNU Lesser General Public License as published by the Free Software Foundation; either version 2.1 of the License, or (at your option) any later version.

This library is distributed in the hope that it will be useful,

but WITHOUT ANY WARRANTY; without even the implied warranty of MERCHANTABILITY or FITNESS FOR A PARTICULAR PURPOSE. See the GNU Lesser General Public License for more details.

You should have received a copy of the GNU Lesser General Public License along with this library; if not, write to the Free Software Foundation, Inc., 51 Franklin Street, Fifth Floor, Boston, MA 02110-1301 USA

Also add information on how to contact you by electronic and paper mail.

You should also get your employer (if you work as a programmer) or your school, if any, to sign a "copyright disclaimer" for the library, if necessary. Here is a sample; alter the names:

Yoyodyne, Inc., hereby disclaims all copyright interest in the library 'Frob' (a library for tweaking knobs) written by James Random Hacker.

<signature of Ty Coon>, 1 April 1990
Ty Coon, President of Vice

That's all there is to it!

=====

Tiny XML(source code) zlib license

```
/* zlib.h -- interface of the 'zlib' general purpose compression library
   version 1.2.2, October 3rd, 2004
```

Copyright (C) 1995-2004 Jean-loup Gailly and Mark Adler

This software is provided 'as-is', without any express or implied warranty. In no event will the authors be held liable for any damages arising from the use of this software.

Permission is granted to anyone to use this software for any purpose, including commercial applications, and to alter it and redistribute it freely, subject to the following restrictions:

1. The origin of this software must not be misrepresented; you must not claim that you wrote the original software. If you use this software in a product, an acknowledgment in the product documentation would be appreciated but is not required.
2. Altered source versions must be plainly marked as such, and must not be misrepresented as being the original software.
3. This notice may not be removed or altered from any source distribution.

Jean-loup Gailly jloup@gzip.org
Mark Adler madler@alumni.caltech.edu

```
*/
```

=====

SQLite(source code) public domain
All of the deliverable code in SQLite has been dedicated to the public

domain by the authors. All code authors, and representatives of the companies they work for, have signed affidavits dedicating their contributions to the public domain and originals of those signed affidavits are stored in a firesafe at the main offices of Hwaci. Anyone is free to copy, modify, publish, use, compile, sell, or distribute the original SQLite code, either in source code form or as a compiled binary, for any purpose, commercial or non-commercial, and by any means.

=====

cgj-html e-mail ware
This library is e-mail ware. Please send eekim@eekim.com e-mail if you use this library;

=====

strace

BSD license

Copyright (c) 1991, 1992 Paul Kranenburg <pk@cs.few.eur.nl>
Copyright (c) 1993 Branko Lankester <branko@hacktic.nl>
Copyright (c) 1993 Ulrich Pegelow <pegelow@moorea.uni-muenster.de>
Copyright (c) 1995, 1996 Michael Elizabeth Chastain
<mec@duracef.shout.net>
Copyright (c) 1993, 1994, 1995, 1996 Rick Sladkey <jrs@world.std.com>
Copyright (c) 1998-2001 Wichert Akkerman <wakkerma@deephackmode.org>
All rights reserved.

Redistribution and use in source and binary forms, with or without modification, are permitted provided that the following conditions are met:

1. Redistributions of source code must retain the above copyright notice, this list of conditions and the following disclaimer.
2. Redistributions in binary form must reproduce the above copyright notice, this list of conditions and the following disclaimer in the documentation and/or other materials provided with the distribution.
3. The name of the author may not be used to endorse or promote products derived from this software without specific prior written permission.

THIS SOFTWARE IS PROVIDED BY THE AUTHOR ``AS IS'' AND ANY EXPRESS OR IMPLIED WARRANTIES, INCLUDING, BUT NOT LIMITED TO, THE IMPLIED WARRANTIES OF MERCHANTABILITY AND FITNESS FOR A PARTICULAR PURPOSE ARE DISCLAIMED. IN NO EVENT SHALL THE AUTHOR BE LIABLE FOR ANY DIRECT, INDIRECT, INCIDENTAL, SPECIAL, EXEMPLARY, OR CONSEQUENTIAL DAMAGES (INCLUDING, BUT NOT LIMITED TO, PROCUREMENT OF SUBSTITUTE GOODS OR SERVICES; LOSS OF USE, DATA, OR PROFITS; OR BUSINESS INTERRUPTION) HOWEVER CAUSED AND ON ANY THEORY OF LIABILITY, WHETHER IN CONTRACT, STRICT LIABILITY, OR TORT (INCLUDING NEGLIGENCE OR OTHERWISE) ARISING IN ANY WAY OUT OF THE USE OF THIS SOFTWARE, EVEN IF ADVISED OF THE POSSIBILITY OF SUCH DAMAGE.

\$Id: COPYRIGHT,v 1.3 2002/03/31 18:43:00 wichert Exp \$

=====

dropbear

Dropbear contains a number of components from different sources, hence there are a few licenses and authors involved. All licenses are fairly non-restrictive.

The majority of code is written by Matt Johnston, under the license below.

Portions of the client-mode work are (c) 2004 Mihnea Stoenescu, under the same license:

Copyright (c) 2002-2004 Matt Johnston
Portions copyright (c) 2004 Mihnea Stoenescu
All rights reserved.

Permission is hereby granted, free of charge, to any person obtaining a copy of this software and associated documentation files (the "Software"), to deal in the Software without restriction, including without limitation the rights to use, copy, modify, merge, publish, distribute, sublicense, and/or sell copies of the Software, and to permit persons to whom the Software is furnished to do so, subject to the following conditions:

The above copyright notice and this permission notice shall be included in all copies or substantial portions of the Software.

THE SOFTWARE IS PROVIDED "AS IS", WITHOUT WARRANTY OF ANY KIND, EXPRESS OR IMPLIED, INCLUDING BUT NOT LIMITED TO THE WARRANTIES OF MERCHANTABILITY, FITNESS FOR A PARTICULAR PURPOSE AND NONINFRINGEMENT. IN NO EVENT SHALL THE AUTHORS OR COPYRIGHT HOLDERS BE LIABLE FOR ANY CLAIM, DAMAGES OR OTHER LIABILITY, WHETHER IN AN ACTION OF CONTRACT, TORT OR OTHERWISE, ARISING FROM, OUT OF OR IN CONNECTION WITH THE SOFTWARE OR THE USE OR OTHER DEALINGS IN THE SOFTWARE.

LibTomCrypt and LibTomMath are written by Tom St Denis, and are Public Domain.

sshpty.c is taken from OpenSSH 3.5p1,
Copyright (c) 1995 Tatu Ylonen <ylo@cs.hut.fi>, Espoo, Finland
All rights reserved
"As far as I am concerned, the code I have written for this software can be used freely for any purpose. Any derived versions of this software must be clearly marked as such, and if the derived work is incompatible with the protocol description in the RFC file, it must be called by a name other than "ssh" or "Secure Shell". "

loginrec.c
loginrec.h
atomicio.h
atomicio.c
and strlcat() (included in util.c) are from OpenSSH 3.6.1p2, and are licensed under the 2 point BSD license.

loginrec is written primarily by Andre Lucas, atomico.c by Theo de Raadt.

strlcat() is (c) Todd C. Miller

Import code in keyimport.c is modified from PUTTY's import.c, licensed as follows:

PUTTY is copyright 1997-2003 Simon Tatham.

Portions copyright Robert de Bath, Joris van Rantwijk, Delian Delchev, Andreas Schultz, Jeroen Massar, Wez Furlong, Nicolas Barry, Justin Bradford, and CORE SDI S.A.

Permission is hereby granted, free of charge, to any person obtaining a copy of this software and associated documentation files (the "Software"), to deal in the Software without restriction, including without limitation the rights to use, copy, modify, merge, publish, distribute, sublicense, and/or sell copies of the Software, and to permit persons to whom the Software is furnished to do so, subject to the following conditions:

The above copyright notice and this permission notice shall be included in all copies or substantial portions of the Software.

THE SOFTWARE IS PROVIDED "AS IS", WITHOUT WARRANTY OF ANY KIND, EXPRESS OR IMPLIED, INCLUDING BUT NOT LIMITED TO THE WARRANTIES OF MERCHANTABILITY, FITNESS FOR A PARTICULAR PURPOSE AND NONINFRINGEMENT. IN NO EVENT SHALL THE COPYRIGHT HOLDERS BE LIABLE FOR ANY CLAIM, DAMAGES OR OTHER LIABILITY, WHETHER IN AN ACTION OF CONTRACT, TORT OR OTHERWISE, ARISING FROM, OUT OF OR IN CONNECTION WITH THE SOFTWARE OR THE USE OR OTHER DEALINGS IN THE SOFTWARE.

=====

libncurses5_5.4-4_arm.deb

This is the Debian prepackaged version of the ncurses library and terminfo utilities. ncurses/terminfo was originally written by Pavel Curtis and Zeyd M. Ben-Halim <zmbenhal@netcom.com>, and is currently held by the Free Software Foundation.

This package was put together by Vaidhyanathan G Mayilrangam <vaidhy@debian.org> and Joel Klecker <espy@debian.org>, using sources obtained from ftp://ftp.gnu.org/gnu/ncurses/ncurses-5.0.tar.gz.

Copyright (c) 1998 Free Software Foundation, Inc.

Permission is hereby granted, free of charge, to any person obtaining a copy of this software and associated documentation files (the "Software"), to deal in the Software without restriction, including without limitation the rights to use, copy, modify, merge, publish, distribute, distribute with modifications, sublicense, and/or sell copies of the software, and to permit persons to whom the Software is

furnished to do so, subject to the following conditions:

The above copyright notice and this permission notice shall be included in all copies or substantial portions of the Software.

THE SOFTWARE IS PROVIDED "AS IS", WITHOUT WARRANTY OF ANY KIND, EXPRESS OR IMPLIED, INCLUDING BUT NOT LIMITED TO THE WARRANTIES OF MERCHANTABILITY, FITNESS FOR A PARTICULAR PURPOSE AND NONINFRINGEMENT. IN NO EVENT SHALL THE ABOVE COPYRIGHT HOLDERS BE LIABLE FOR ANY CLAIM, DAMAGES OR OTHER LIABILITY, WHETHER IN AN ACTION OF CONTRACT, TORT OR OTHERWISE, ARISING FROM, OUT OF OR IN CONNECTION WITH THE SOFTWARE OR THE USE OR OTHER DEALINGS IN THE SOFTWARE.

Except as contained in this notice, the name(s) of the above copyright holders shall not be used in advertising or otherwise to promote the sale, use or other dealings in this Software without prior written authorization.

=====

tthttpd_2.23beta1-3_arm.deb

This package was produced by Yotam Rubin <yotam@makif.omer.k12.il>
from sources obtained from:
<<http://www.acme.com/software/tthttpd/tthttpd-2.21b.tar.gz>>
Its source files include the following copyright:

Copyright(C) 1995,1998,1999,2000 by Jef Poskanzer <jef@acme.com>.
All rights reserved.

```
tthttpd-2.25b/config.guess:# Copyright (C) 1992, 93, 94, 95, 1996 Free
Software Foundation, Inc.
tthttpd-2.25b/configure:# Copyright (C) 1992, 93, 94, 95, 96 Free
Software Foundation, Inc.
# This file is free software; you can redistribute it and/or modify it
# under the terms of the GNU General Public License as published by
# the Free Software Foundation; either version 2 of the License, or
# (at your option) any later version.
#
# This program is distributed in the hope that it will be useful, but
# WITHOUT ANY WARRANTY; without even the implied warranty of
# MERCHANTABILITY or FITNESS FOR A PARTICULAR PURPOSE. See the GNU
# General Public License for more details.
#
# You should have received a copy of the GNU General Public License
```

```
# along with this program; if not, write to the Free Software
# Foundation, Inc., 59 Temple Place - Suite 330, Boston, MA 02111-1307,
# USA.
```

```
#
# As a special exception to the GNU General Public License, if you
# distribute this file as part of a program that contains a
# configuration script generated by Autoconf, you may include it under
# the same distribution terms that you use for the rest of that program.
```

```
thttpd-2.25b/config.sub:# Copyright (C) 1991, 92, 93, 94, 95, 1996
Free Software Foundation, Inc.
```

```
# This file is (in principle) common to ALL GNU software.
# The presence of a machine in this file suggests that SOME GNU software
# can handle that machine. It does not imply ALL GNU software can.
```

```
#
# This file is free software; you can redistribute it and/or modify
# it under the terms of the GNU General Public License as published by
# the Free Software Foundation; either version 2 of the License, or
# (at your option) any later version.
```

```
#
# This program is distributed in the hope that it will be useful,
# but WITHOUT ANY WARRANTY; without even the implied warranty of
# MERCHANTABILITY or FITNESS FOR A PARTICULAR PURPOSE. See the
# GNU General Public License for more details.
```

```
#
# You should have received a copy of the GNU General Public License
# along with this program; if not, write to the Free Software
# Foundation, Inc., 59 Temple Place - Suite 330,
# Boston, MA 02111-1307, USA.
```

```
thttpd-2.25b/config.h: Copyright(C)1995,1998,1999,2000,2001 by Jef
Poskanzer <jef@mail.acme.com>.
```

```
thttpd-2.25b/fdwatch.c: Copyright(C)1999,2000 by Jef Poskanzer
<jef@mail.acme.com>.
```

```
thttpd-2.25b/fdwatch.h: Copyright(C)1999 by Jef Poskanzer
<jef@mail.acme.com>.
```

```
thttpd-2.25b/libhttpd.c: Copyright(C)1995,1998,1999,2000,2001 by Jef
Poskanzer <jef@mail.acme.com>.
```

```
thttpd-2.25b/libhttpd.h: Copyright(C)1995,1998,1999,2000,2001 by Jef
Poskanzer <jef@mail.acme.com>.
```

```
thttpd-2.25b/Makefile.in:# Copyright(C)1995,1998 by Jef Poskanzer
<jef@mail.acme.com>.
```

```
thttpd-2.25b/match.c: Copyright(C)1995,2000 by Jef Poskanzer
<jef@mail.acme.com>.
```

```
thttpd-2.25b/match.h: Copyright(C)1995 by Jef Poskanzer
<jef@mail.acme.com>.
```

```
thttpd-2.25b/mmc.c: Copyright(C)1998,2001 by Jef Poskanzer
<jef@mail.acme.com>.
```

```
thttpd-2.25b/mmc.h: Copyright(C)1998 by Jef Poskanzer
<jef@mail.acme.com>.
```

```
thttpd-2.25b/tdate_parse.c: Copyright(C)1995 by Jef Poskanzer
<jef@mail.acme.com>.
```

```
thttpd-2.25b/tdate_parse.h: Copyright(C)1995 by Jef Poskanzer
<jef@mail.acme.com>.
```

```
thttpd-2.25b/thttpd.8:Copyright(C)1995,1998,1999,2000 by Jef Poskanzer
<jef@mail.acme.com>.
```

```
thttpd-2.25b/thttpd.c: Copyright(C)1995,1998,1999,2000,2001 by Jef
Poskanzer <jef@mail.acme.com>.
```

```
thttpd-2.25b/timers.c: Copyright(C)1995,1998,2000 by Jef Poskanzer
<jef@mail.acme.com>.
```

```
thttpd-2.25b/timers.h: Copyright(C)1995,1998,1999,2000 by Jef Poskanzer
<jef@mail.acme.com>.
```

```
thttpd-2.25b/cgi-src/Makefile.in:Copyright(C)1995 by Jef Poskanzer
<jef@mail.acme.com>.
thttpd-2.25b/cgi-src/phf.c: Copyright(C)1996 by Jef Poskanzer
<jef@mail.acme.com>.
thttpd-2.25b/cgi-src/redirect.8:Copyright(C)1995 by Jef Poskanzer
<jef@mail.acme.com>.
thttpd-2.25b/cgi-src/redirect.c: Copyright(C)1995 by Jef Poskanzer
<jef@mail.acme.com>.
thttpd-2.25b/cgi-src/ssi.8:Copyright(C)1995 by Jef Poskanzer
<jef@mail.acme.com>.
thttpd-2.25b/cgi-src/ssi.c: Copyright(C)1995 by Jef Poskanzer
<jef@mail.acme.com>.
thttpd-2.25b/extras/Makefile.in:Copyright(C)1995,1998 by Jef Poskanzer
<jef@mail.acme.com>.
thttpd-2.25b/extras/makeweb.1:Copyright(C)1995 by Jef Poskanzer
<jef@mail.acme.com>.
thttpd-2.25b/extras/makeweb.c: Copyright(C)1995 by Jef Poskanzer
<jef@mail.acme.com>.
thttpd-2.25b/extras/syslogtcern:Copyright(C)1995,1998 by Jef Poskanzer
<jef@mail.acme.com>.
thttpd-2.25b/extras/syslogtcern.8:Copyright(C)1995 by Jef Poskanzer
<jef@mail.acme.com>.
thttpd_2.23beta1-3_arm.deb
```

```
** Redistribution and use in source and binary forms, with or without
** modification, are permitted provided that the following conditions
** are met:
** 1. Redistributions of source code must retain the above copyright
** notice, this list of conditions and the following disclaimer.
** 2. Redistributions in binary form must reproduce the above copyright
** notice, this list of conditions and the following disclaimer in
the
** documentation and/or other materials provided with the
distribution.
**
** THIS SOFTWARE IS PROVIDED BY THE AUTHOR AND CONTRIBUTORS ``AS IS''
AND
** ANY EXPRESS OR IMPLIED WARRANTIES, INCLUDING, BUT NOT LIMITED TO, THE
** IMPLIED WARRANTIES OF MERCHANTABILITY AND FITNESS FOR A PARTICULAR
PURPOSE
** ARE DISCLAIMED. IN NO EVENT SHALL THE AUTHOR OR CONTRIBUTORS BE
LIABLE
** FOR ANY DIRECT, INDIRECT, INCIDENTAL, SPECIAL, EXEMPLARY, OR
CONSEQUENTIAL
** DAMAGES (INCLUDING, BUT NOT LIMITED TO, PROCUREMENT OF SUBSTITUTE
GOODS
** OR SERVICES; LOSS OF USE, DATA, OR PROFITS; OR BUSINESS INTERRUPTION)
** HOWEVER CAUSED AND ON ANY THEORY OF LIABILITY, WHETHER IN CONTRACT,
STRICT
** LIABILITY, OR TORT (INCLUDING NEGLIGENCE OR OTHERWISE) ARISING IN ANY
WAY
** OUT OF THE USE OF THIS SOFTWARE, EVEN IF ADVISED OF THE POSSIBILITY
OF
** SUCH DAMAGE.
```

```
thttpd-2.25b/install-sh:# Copyright 1991 by the Massachusetts Institute
of Technology
#
# Permission to use, copy, modify, distribute, and sell this software
and its
# documentation for any purpose is hereby granted without fee, provided
that
# the above copyright notice appear in all copies and that both that
```

```
# copyright notice and this permission notice appear in supporting
# documentation, and that the name of M.I.T. not be used in advertising
or
# publicity pertaining to distribution of the software without specific,
# written prior permission. M.I.T. makes no representations about the
# suitability of this software for any purpose. It is provided "as is"
# without express or implied warranty.
```

```
tthttpd-2.25b/stterror.c: * Copyright (c) 1988 Regents of the University
of California.
```

```
* All rights reserved.
```

```
*
```

```
* Redistribution and use in source and binary forms are permitted
* provided that the above copyright notice and this paragraph are
* duplicated in all such forms and that any documentation,
* advertising materials, and other materials related to such
* distribution and use acknowledge that the software was developed
* by the University of California, Berkeley. The name of the
* university may not be used to endorse or promote products derived
* from this software without specific prior written permission.
* THIS SOFTWARE IS PROVIDED `AS IS' AND WITHOUT ANY EXPRESS OR
* IMPLIED WARRANTIES, INCLUDING, WITHOUT LIMITATION, THE IMPLIED
* WARRANTIES OF MERCHANTABILITY AND FITNESS FOR A PARTICULAR PURPOSE.
```

```
====
```

