



Micro System  
MCM355



## What's in the box



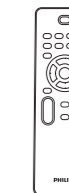
FM antenna



Power cord



MP3 link cable



Remote Control



User manual



Quick start guide

## Quick start guide

- 1 Connect
- 2 Setup
- 3 Enjoy

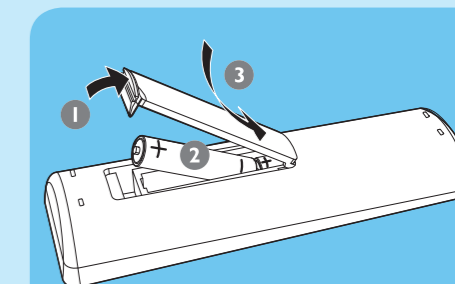
## 1 Connect

### A Prepare the remote control

- 1 Open the battery compartment.
- 2 Insert 2 AAA batteries with correct polarity (+/-) as indicated.
- 3 Close the battery compartment.

#### Note

- Before you press any function button on the remote control, press a source button to select source with the remote control.



# 1 Connect

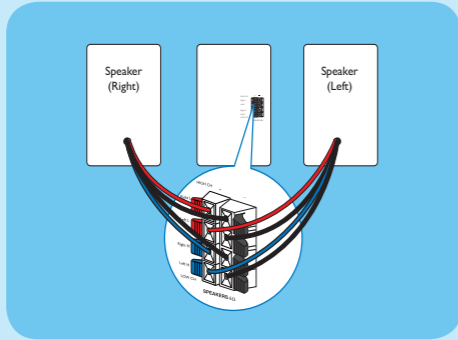
## B Connect Speaker

### Note

- Ensure that the colors of the speaker wires and terminals are matched.

- 1 Hold down the socket flap.
- 2 Insert the stripped part of the wire completely.
  - Insert the right speaker wires to “**Right L/Right H**”, left speaker wires to “**Left L/Left H**”.
  - Insert the red/blue wires to “**+**”, black wires to “**-**”.

- 3 Release the socket flap.

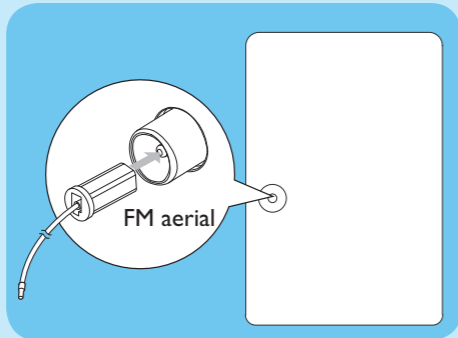


## C Connect FM antenna

- 1 Connect the supplied FM antenna to the **FM AERIAL** jack on the main unit.

### Tip

- See the User Manual for how to connect other equipment to this system.

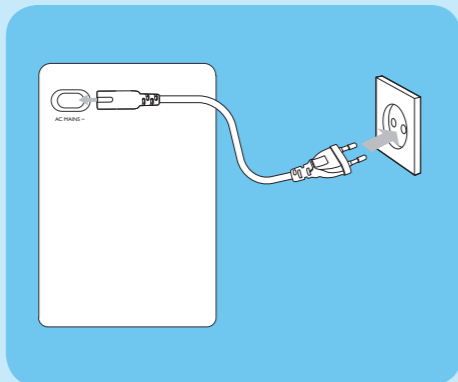


## D Connect power

### Caution

- Risk of product damage! Ensure that the power supply voltage corresponds to the voltage printed on the back or the underside of the Audio System.
- Before connecting the AC power cord, ensure you have completed all other connections.

- 1 Connect the power cord to the **AC~MAINS** jack on the main unit.
- 2 Connect the power plug to the wall outlet.



# 2 Setup

## A Set clock

### Note

- You cannot set the clock in Eco Power Standby mode.
- In Eco Power Standby mode, press **CLOCK** to show clock first, then press and hold **CLOCK** to proceed clock setting.
- During the setup, if no button is pressed within 10 seconds, the system will exit the clock setting mode.

- 1 In standby mode, press and hold **CLOCK/DISPLAY** to activate the clock setting mode.
  - ↳ **[SET CLOCK]** (set clock) is displayed briefly. Then the hour digits are displayed and begin to blink.
- 2 Press **■** repeatedly to select 12 hour or 24 hour format.
- 3 Press **VOL +/-** to set the hour.
- 4 Press **CLOCK/DISPLAY** to confirm.
  - ↳ The minute digits are displayed and begin to blink.

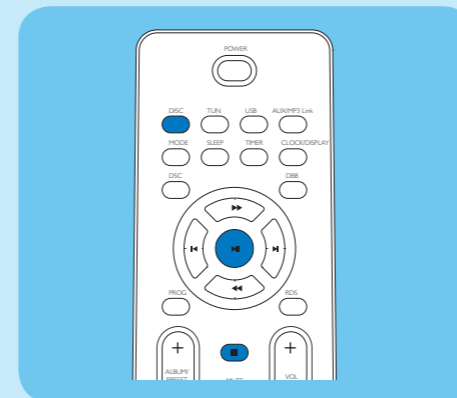
- 5 Press **VOL +/-** to set the minute.
- 6 Press **CLOCK/DISPLAY** to confirm.



# 3 Enjoy

## A Play disc

- 1 Press **DISC** to select the disc source.
- 2 Press **▲** on the front panel to open the disc tray.
- 3 Insert a disc with the printed side facing up, then close the disc tray.
  - ↳ Play starts automatically.
    - To pause/resume play, press **▶||**.
    - To stop play, press **■**.



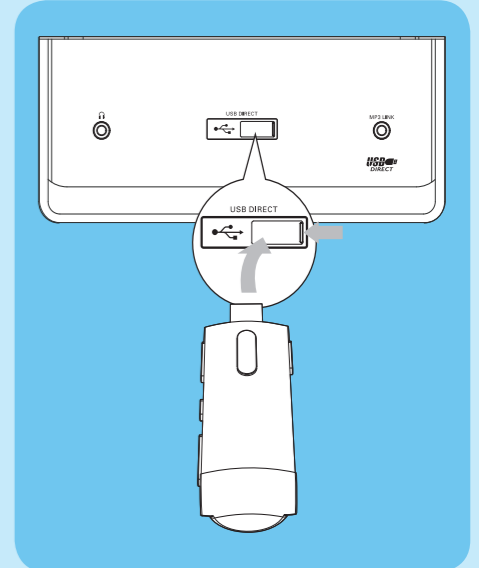
# 3 Enjoy

## B Play from USB

### Note

- Ensure that the USB device contains playable music.

- 1 Flip open the USB socket cover on the front panel.
- 2 Insert the USB plug of a USB device into the exposed socket.
  - ↳ The total number of tracks is displayed.
  - ↳ Play starts automatically.
    - To pause/resume play, press **▶||**.
    - To stop play, press **■**.



## C Program radio stations automatically

- 1 In tuner mode, press and hold **PROG** for 2 seconds to activate automatic program mode.
  - ↳ **[AUTO]** (auto) is displayed.
  - ↳ All available stations are programmed in the order of waveband reception strength.
  - ↳ The first programmed radio station is broadcast automatically.

### Tip

- Detailed features and additional functions are described in the user manual.

