

Register your product and get support at  
[www.philips.com/welcome](http://www.philips.com/welcome)

BDP2930



---

User manual

7

使用手冊

23

**PHILIPS**



EN Before you connect this Blu-ray disc/ DVD player, read and understand all accompanying instructions.

ZH-TW 連接此藍光光碟/DVD 播放機前，請閱讀並瞭解所有隨附的指示。

## Attach the ferrite core

If you use a USB device with a USB cable to connect to this product, attach the supplied ferrite core to the USB cable to reduce the electromagnetic interference.

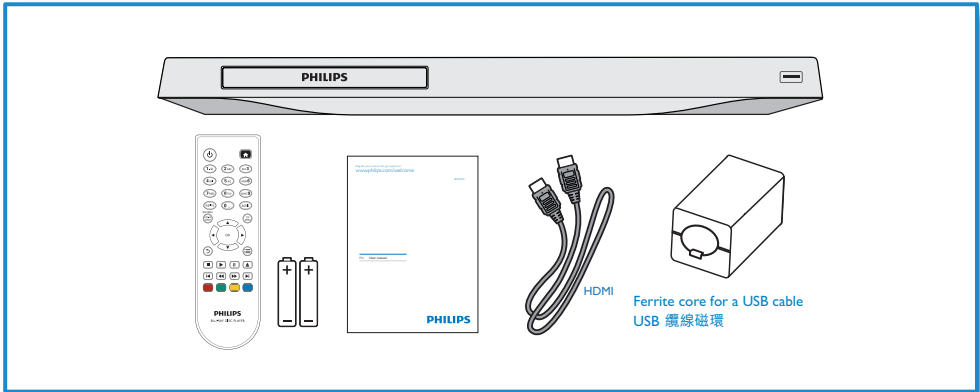
1. Open the ferrite core from the joint.
2. Attach the ferrite core near the USB plug.
  - 1) Place the USB cable through the core.
  - 2) Close the core.

## 安裝磁環

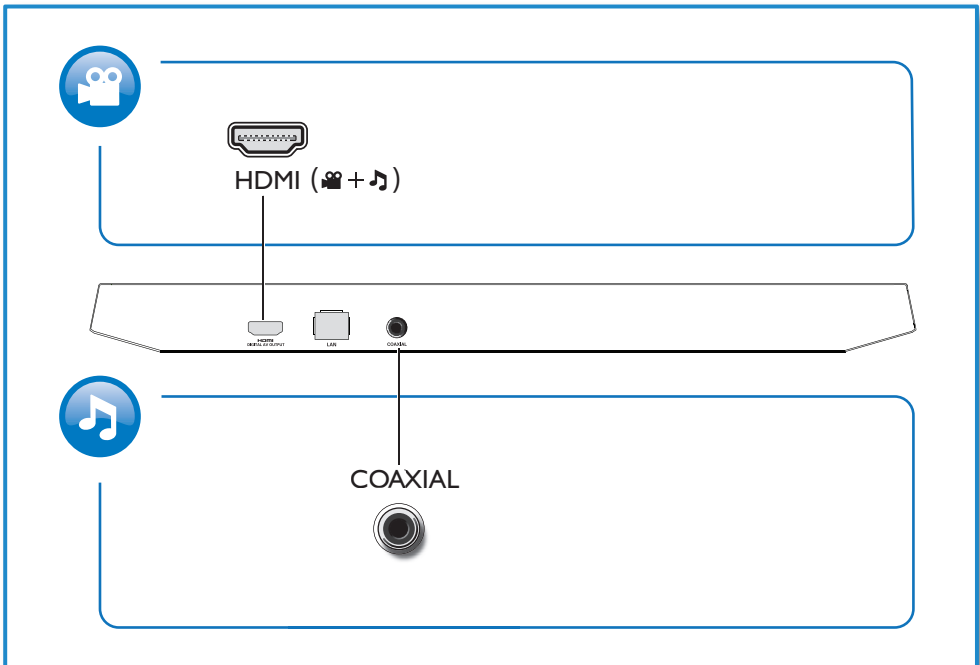
若使用帶USB線的USB裝置連接本產品，將附送的磁環安裝到USB線上以減少電磁干擾。

1. 從磁環的開合處將磁環打開。
2. 將磁環安裝至靠近USB插頭的位置。
  - 1) 將USB線放入磁環內。
  - 2) 將磁環關上。





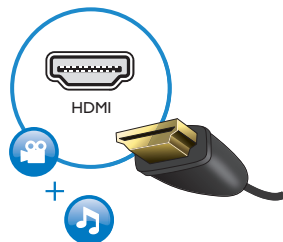
1



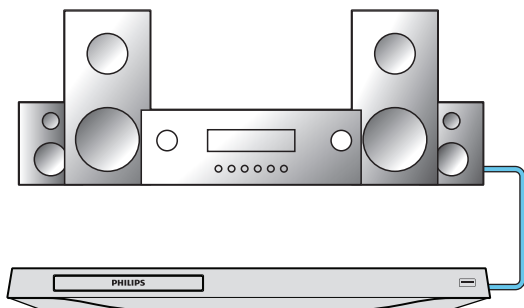
2



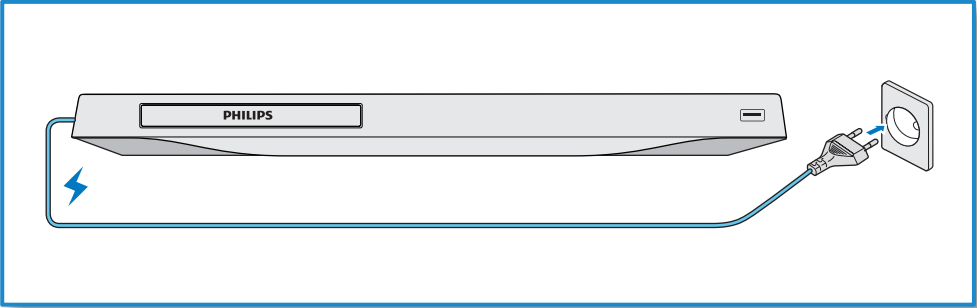
## HDMI



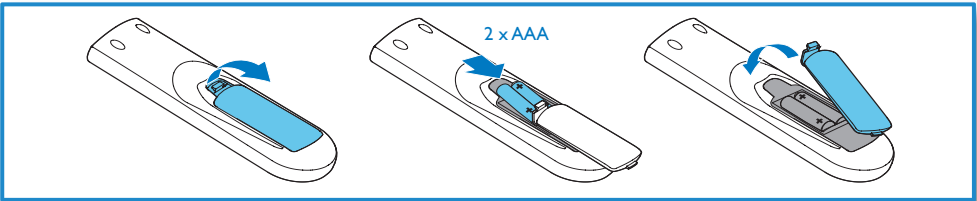
## COAXIAL



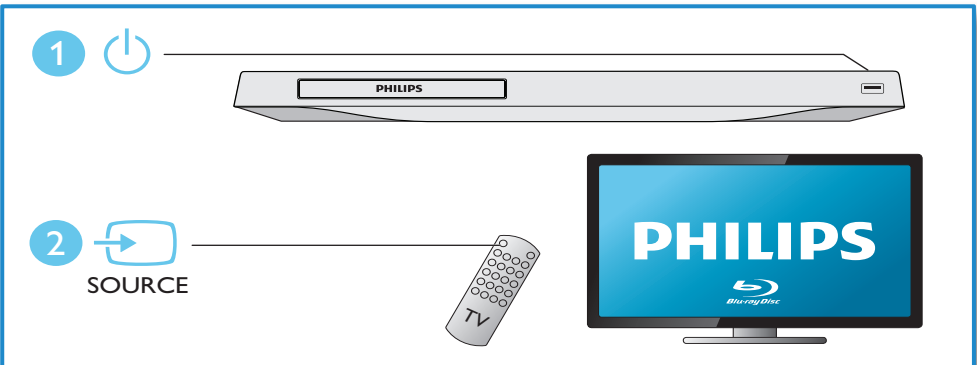
3



4



5



# 6



2

BD  
DVD/VCD/CD  
DivX Plus HD/MKV  
MP3 / JPEG

1



3

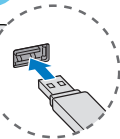


4



USB

1



2



3



# Contents

---

<b>1</b>	<b>Hookup and play</b>	2-6
----------	------------------------	-----

---

<b>2</b>	<b>Use your Blu-ray disc/ DVD player</b>	8
	Basic play control	8
	Video, audio and picture options	9
	DivX videos	10
	RMVB or RM files	10
	Play a musical slideshow	10
	BonusView on Blu-ray	10
	BD-Live on Blu-ray	11
	Set up a network	11
	Use Philips EasyLink	12

---

<b>3</b>	<b>Change settings</b>	13
	Picture	13
	Sound	13
	Network (installation, status...)	13
	Preference (languages, parental control...)	14
	Advanced options (clear memory...)	14

---

<b>4</b>	<b>Update software</b>	15
	Update software via the Internet	15
	Update software via USB	15

---

<b>5</b>	<b>Specifications</b>	16
----------	-----------------------	----

---

<b>6</b>	<b>Troubleshooting</b>	17
----------	------------------------	----

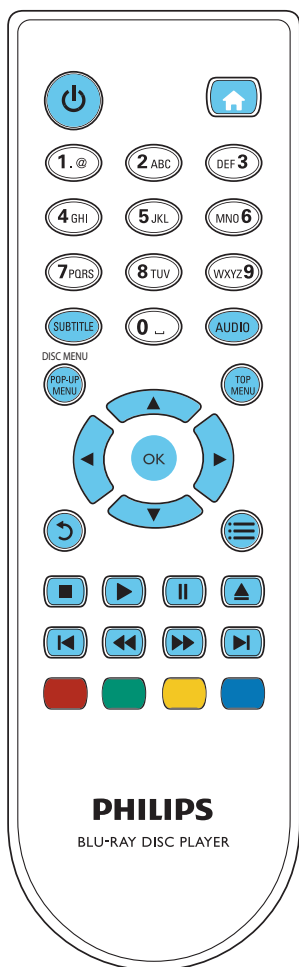
---

<b>7</b>	<b>Safety and important notice</b>	19
----------	------------------------------------	----

## 2 Use your Blu-ray disc/ DVD player

Congratulations on your purchase, and welcome to Philips! To fully benefit from the support that Philips offers (e.g. product software upgrade), register your product at [www.philips.com/welcome](http://www.philips.com/welcome).

### Basic play control



During play, press the following buttons to control.

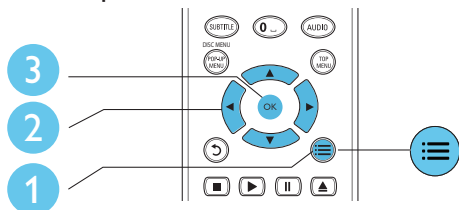
Button	Action
	Turn on the player; or switch to standby.
	Access the home menu.
<b>SUBTITLE</b>	Select a subtitle language.
<b>AUDIO</b>	Select an audio language or channel.
<b>DISC MENU / POP-UP MENU</b>	Access or exit the disc menu.
<b>TOP MENU</b>	Access the main menu of a video disc.
	Navigate the menus. Press   to rotate a picture clockwise or counter-clockwise during slideshow.
<b>OK</b>	Confirm a selection or entry.
	Return to a previous display menu.
	Access more options during play.
	Stop play.
	Start or resume play.
	Pause play. Press repeatedly to slow forward frame by frame.
	Open or close the disc compartment.
	Skip to the previous or next track, chapter or file.
	Fast backward or forward. Press repeatedly to change the search speed. Press  once, and then press  to slow forward.
<b>Color buttons</b>	Select tasks or options for Blu-ray discs.



## Video, audio and picture options

More options are available for video or picture play from a disc or USB storage device.

### Video options



Access more options during video play.

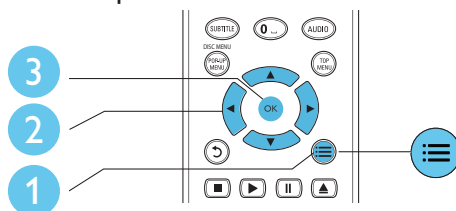
- **[Audio language]:** Select an audio language.
- **[Subtitle Language]:** Select a subtitle language.
- **[Subtitle shift]:** Change the subtitle position on the screen. Press ▲ ▼ to change the subtitle position.
- **[Info]:** Display play information.
- **[Character set]:** Select a character set that supports the DivX video subtitle (only for DivX videos).
- **[Time search]:** Skip to a specific time via the numeric buttons on the remote control.
- **[2nd audio language]:** Select the second audio language (only for Blu-ray discs that support BonusView).
- **[2nd Subtitle Language]:** Select the second subtitle language (only for Blu-ray discs that support BonusView).
- **[Titles]:** Select a title.
- **[Chapters]:** Select a chapter.
- **[Angle list]:** Select a camera angle.
- **[Menus]:** Display a disc menu.
- **[PIP selection]:** Display a picture-in-picture window (only for Blu-ray discs that support BonusView).
- **[Zoom]:** Zoom into a video picture. Press ◀▶ to select a zoom factor.
- **[Repeat]:** Repeat a chapter or title.

- **[Repeat A-B]:** Mark two points within a chapter for repeat play, or turn off repeat mode.
- **[Picture settings]:** Select a predefined color setting.

### Note

- Available video options depend on the video source.

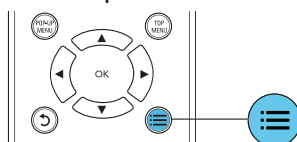
### Picture options



Access more options during slideshow.

- **[Rotate +90]:** Rotate a picture 90 degrees clockwise.
- **[Rotate -90]:** Rotate a picture 90 degrees counter-clockwise.
- **[Zoom]:** Zoom into a picture. Press ◀▶ to select a zoom factor.
- **[Info]:** Display picture information.
- **[Duration per slide]:** Set a display interval for a slideshow.
- **[Slide animation]:** Select a transition effect for a slideshow.
- **[Picture settings]:** Select a predefined color setting.
- **[Repeat]:** Repeat a selected folder.

### Audio options



Press ≡ repeatedly to cycle through the following options.

- Repeat the current track.

- Repeat all the tracks on the disc or folder.
- Play audio tracks in a random loop.
- Turn off a repeat mode.

---

## DivX videos

You can play DivX videos from a disc, or a USB storage device.

### VOD code for DivX

- Before you purchase DivX videos and play them on this player, register this player on [www.divx.com](http://www.divx.com) using the DivX VOD code.
- Display the DivX VOD code: press **⬆**, and select **[Setup] > [Advanced] > [DivX® VOD Code]**.

### DivX subtitles

- Press **SUBTITLE** to select a language.
- If the subtitle is not displayed correctly, change the character set that supports the DivX subtitle. Select a character set: press **⋮**, and select **[Character set]**.

Character set	Languages
<b>[Standard]</b>	English, Albanian, Danish, Dutch, Finnish, French, Gaelic, German, Italian, Kurdish (Latin), Norwegian, Portuguese, Spanish, Swedish and Turkish
<b>[Chinese]</b>	Simplified Chinese
<b>[Chinese-Traditional]</b>	Traditional Chinese
<b>[Korean]</b>	English and Korean

### Note

- To use the subtitles, make sure that the subtitle file has the same name as the DivX video file name. For example, if the DivX video file is named "movie.avi", save the subtitle file as "movie.srt", or "movie.sub".
- This player can play subtitle files in the following formats: .srt, .sub, .txt, .ssa, and .smi.

---

## RMVB or RM files

You can play RMVB or RM files from a disc or a USB storage device.

An Real Media Variable Bitrate (RMVB) and RealMedia (RM) file contains both audio and video. You can copy an RMVB or RM file from your computer onto a recordable disc or USB storage device. And play them from this player:

### Note

- Make sure that the file extension must be ".RMVB" or ".RM".

---

## Play a musical slideshow

Play music and pictures simultaneously to create a musical slideshow.

- 1 From a disc or connected USB storage device, play a music file.
- 2 Press **⏮**, and go to the picture folder.
- 3 Select a picture from the same disc or USB, and press **OK** to start slideshow.
- 4 Press **■** to stop slideshow.
- 5 Press **■** again to stop music play.

---

## BonusView on Blu-ray

View special content (such as commentaries) in a small screen window.

This feature is only applicable to Blu-ray discs compatible with BonusView (also known as picture in picture).

- 1 During play, press **⋮**.  
↳ The options menu is displayed.
- 2 Select **[PIP selection] > [PIP]**, and press **OK**.  
↳ PIP options [1]/[2] depend on the video contents.



- ↳ The secondary video window is displayed.

- 3 Select [2nd audio language] or [2nd Subtitle Language], and press **OK**.

## BD-Live on Blu-ray

Access exclusive online services, such as movie trailers, games, ringtones and other bonus contents.

This feature is only applicable to Blu-ray discs that are BD-Live enabled.

- 1 Prepare the Internet connection and set up a network (see "Set up a network").
- 2 Connect a USB storage device to the  (USB) connector on this player.
  - A USB storage device is used to store the downloaded BD-Live content.
  - If you connect this player to the Internet through a Wi-Fi USB adapter (sold separately), connect a USB hub (not supplied) to this player to make multiple USB ports available.
  - To delete the BD-Live previously downloaded on the USB storage device for memory release, press  and select [**Setup**] > [**Advanced**] > [**Clear memory**].
- 3 Play a disc that is BD-Live enabled.
- 4 On the disc menu, select the BD-Live icon, and press **OK**.
  - ↳ BD-Live starts to load. The loading time depends on the disc and the Internet connection.
- 5 On the BD-Live interface, select an item to access.

### Note

- BD-Live services vary from discs and countries.
- When you use BD-Live, data on the disc and this player are accessed by the content provider
- Use a USB storage device with at least 1GB of free space to store the download.
- If a USB hub is used with this player, do not overload the USB hub with many USB devices to avoid insufficient USB power.

## Set up a network

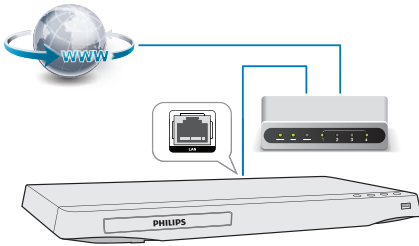
Connect this player to the Internet to access the services:


- **BD-Live:** access online bonus features (applicable to Blu-ray discs that are BD-Live enabled)
- **Update software:** update the software of this player via the Internet.

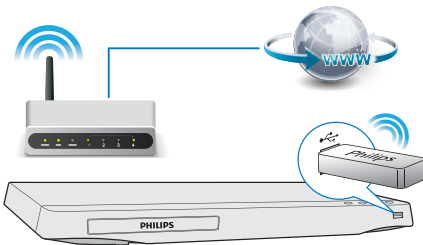
### Note

- For wireless connection, you need to use an optional Philips Wi-Fi USB adapter (named WUB1110).
- The Wi-Fi USB Adapter (WUB1110) is not included. To purchase this adapter, visit [shop.philips.com](http://shop.philips.com). If the Philips online shop is not available in your country, please contact Philips customer service. For contact details, go to [www.philips.com/support](http://www.philips.com/support).


- 1 Connect this player to the Internet through wired (Ethernet) or wireless connection.
  - For wired connection, connect a network cable (not supplied) to the **LAN** port on the back panel of this player.



- For Wi-Fi, connect a Philips Wi-Fi USB adapter (named WUB1110) to the  (USB) connector on the front panel of this player.



## 2 Perform the network installation.

- 1) Press .
- 2) Select **[Setup]**, and press **OK**.
- 3) Select **[Network]** > **[Network installation]**, and press **OK**.
- 4) Follow the instructions on the TV screen to complete the installation. If necessary, use the alphanumeric buttons on the remote control to enter a password.




### Caution

- Before you connect to a network, familiarize yourself with the network router, and networking principles. If necessary, read documentation accompanying network components. Philips is not responsible for lost, damaged or corrupt data.

## Use Philips EasyLink

This player supports Philips EasyLink which uses the HDMI CEC (Consumer Electronics Control) protocol. You can use a single remote control to control EasyLink compliant devices that are connected through HDMI. Philips does not guarantee 100% interoperability with all HDMI CEC devices.

- 1 Connect the HDMI CEC compliant devices through HDMI, and turn on the HDMI CEC operations on the TV and other connected devices (see the user manual of the TV or other devices for details).
- 2 Press .
- 3 Select **[Setup]** > **[EasyLink]**.
- 4 Select **[On]** under the options: **[EasyLink]**, **[One Touch Play]** and **[One Touch Standby]**.  
↳ EasyLink function is turned on.

### One Touch Play

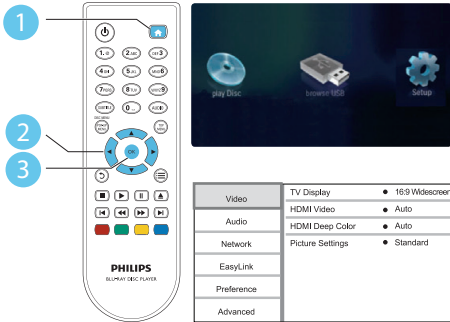
When you play a disc on this player, the TV automatically switches to the correct video input source.

### One Touch Standby

When a connected device (for example TV) is put to standby with its own remote control, this player is put to standby automatically.

## 3 Change settings

This section helps you change the settings of this player.



### Note

- You cannot change a menu option that is grayed out.
- To return to the previous menu, press **↶**. To exit the menu, press **⏠**.

### Note

- If you change a setting, make sure that the TV supports the new setting.

## Sound

- 1 Press **⏠**.
- 2 Select **[Setup]** > **[Audio]** to access the audio setup options.
  - **[Night mode]**: Select quiet or full dynamic sound. Night mode decreases the volume of loud sound and increases the volume of soft sound (such as speech).
  - **[HDMI Audio]**: Set an HDMI audio format when this player is connected through HDMI.
  - **[Digital Audio]**: Select an audio format for the sound output when this player is connected through a digital connector (coaxial).
  - **[PCM Downsampling]**: Set the sampling rate for PCM audio output when this player is connected through a digital connector (coaxial).

### Note

- Night mode is only available for Dolby encoded DVD and Blu-ray discs.

## Picture

- 1 Press **⏠**.
- 2 Select **[Setup]** > **[Video]** to access the video setup options.
  - **[TV display]**: Select a picture display format to fit the TV screen.
  - **[HDMI video]**: Select an HDMI video resolution.
  - **[HDMI Deep Color]**: Display colors with more shades and hues when the video content is recorded in Deep Color and the TV supports this feature.
  - **[Picture settings]**: Select a predefined color setting.

## Network (installation, status...)

- 1 Press **⏠**.
- 2 Select **[Setup]** > **[Network]** to access the network setup options.
  - **[Network installation]**: Start a wired or wireless installation to make the network work.

- **[View network settings]:** Display the current network status.
- **[View wireless settings]:** Display the current Wi-Fi status.

---

## Preference (languages, parental control...)

- 1 Press **▲**.
- 2 Select **[Setup]** > **[Preference]** to access the preference setup options.
  - **[Menu language]:** Select an onscreen display menu language.
  - **[Audio]:** Select an audio language for video.
  - **[Subtitle]:** Select a subtitle language for video.
  - **[Disc menu]:** Select a menu language for a video disc.
  - **[Parental control]:** Restrict access to discs that are encoded with ratings. Input "0000" to access the restriction options. To play all discs irrespective of the rating, select level "8".
  - **[Screen saver]:** Enable or disable screen saver mode. If enabled, the screen enters idle mode after 10 minutes of inactivity (for example, in pause or stop mode).
  - **[Auto subtitle shift]:** Enable or disable subtitle shift. If enabled, the subtitle position is changed automatically to fit the TV screen (this feature works with some Philips TVs only).
  - **[Change password]:** Set or change a password to play a restricted disc. Input "0000" if you do not have a password or if you have forgotten your password.
  - **[Display panel]:** Change the brightness of the display panel of the player.
  - **[Auto standby]:** Enable or disable auto standby. If enabled, the player switches to standby after 29 minutes

- of inactivity (for example, in pause or stop mode).
- **[VCD PBC]:** Display or skip the content menu for VCD and SVCD.

### Note

- If your preferred language is not available for disc language, audio or subtitle, you can select **[Others]** from the menu options and input 4-digit language code which can be found at the back of this user manual.
- If you select a language which is not available on a disc, this player uses the default language of the disc.

---

## Advanced options (clear memory...)

- 1 Press **▲**.
- 2 Select **[Setup]** > **[Advanced]** to access the advanced setup options.
  - **[BD-Live security]:** Restrict or allow access to BD-Live (only for non-commercial, user-created BD-Live discs).
  - **[Downmix mode]:** Control 2-channel stereo audio output.
  - **[Software update]:** Select to update software from a network or from USB storage device.
  - **[Clear memory]:** Delete the previous BD-Live download on the USB storage device. A "BUDA" folder is automatically created to store the BD-Live download.
  - **[DivX® VOD Code]:** Display the DivX® registration code or the deregistration code for this player.
  - **[Version information]:** Display the software version of this player.
  - **[Restore default settings]:** Reset this player to the default settings made at the factory, except for password and parental control level.



## Note

- You cannot restrict Internet access on commercial Blu-ray discs.
- Before you purchase DivX videos and play them on this player, register this player on [www.divx.com](http://www.divx.com) with the DivX VOD code.

## 4 Update software

Before you update the software of this player, check the current software version:

- Press **▲**, and then select **[Setup] > [Advanced] > [Version information]**, and press **OK**.

---



### Update software via the Internet

- 1 Connect the player to the Internet (see "Set up a network").
- 2 Press **▲**, and select **[Setup]**.
- 3 Select **[Advanced] > [Software update] > [Network]**.
  - ↳ If an upgrade media is detected, you are prompted to start the update.
- 4 Follow the instructions on the TV screen to update the software.
  - ↳ When the update is complete, this player automatically turns off and on again.

---

### Update software via USB

- 1 Check the latest software version on [www.philips.com/support](http://www.philips.com/support).
  - Search for your model and click on "Software and drivers".
- 2 Download the software into a USB storage device.
  - ① Unzip the download, and make sure that the unzipped folder is named "UPG\_ALL".
  - ② Put the "UPG\_ALL" folder in the root directory.

- 3 Connect the USB storage device to the  (USB) connector on this player.
- 4 Press , and select [Setup].
- 5 Select [Advanced] > [Software update]> [USB].
  - ↳ If an upgrade media is detected, you are prompted to start the update.
- 6 Follow the instructions on the TV screen to update the software.
  - ↳ When the update is complete, this player automatically turns off and on again.



### Caution

- Do not turn off the power or remove the USB storage device when the software update is in progress because you might damage this player.

## 5 Specifications



### Note

- Specifications are subject to change without notice

### Region code

This player can play discs with the following region codes.

DVD	Blu-ray	Countries
		Asia Pacific, Taiwan, Korea
		

### Playable media

- BD-Video
- DVD-Video, DVD+R/+RW, DVD-R/-RW, DVD+R/-R DL (Dual Layer)
- VCD/SVCD
- Audio CD, CD-R/CD-RW, MP3 media, WMA media, JPEG files
- DivX (Ultra)/DivX Plus HD media, MKV media
- USB storage device

### File format

- Video: .avi, .divx, .mp4, .mkv, .rmvb, .rm
- Audio: .mp3, .wma, .wav
- Picture: .jpg, .gif, .png

### Video

- Signal system: PAL / NTSC
- HDMI output: 480i/576i, 480p/576p, 720p, 1080i, 1080p, 1080p/24Hz

### Audio

- HDMI output
- Digital output: 0.5 Vp-p (75 ohm)
  - Coaxial
- Sampling frequency:
  - MP3: 32 kHz, 44.1 kHz, 48 kHz
  - WMA: 44.1 kHz, 48 kHz
- Constant bit rate:
  - MP3: 112 kbps - 320 kbps
  - WMA: 48 kbps - 192 kbps



## USB

- Compatibility: Hi-Speed USB (2.0)
- Class support: USB Mass Storage Class
- File system: FAT16, FAT32
- USB port: 5V  $\pm$ , 500mA
- Support HDD (a portable hard disc drive): an external power source may be needed.

## Main unit

- Power supply rating: AC 110-240V~, 50/60Hz
- Power consumption: 11 W
- Power consumption in standby mode: < 1 W
- Dimensions (w x h x d): 310 x 40 x 203 (mm)
- Net Weight: 1.1 kg

## Accessories supplied

- Remote control and 2 AAA batteries
- HDMI cable
- User manual
- Ferrite core for a USB cable

## Optional accessory

- A wireless Philips USB adapter(named WUB1110, sold separately)
  - Multimedia connections: Wi-Fi 802.11b/g/n
  - Connectivity: USB
  - Ambient temperature: 5 deg C to 40 deg C.
  - Dongle dimensions (W x H x D): 28.4 x 82 x 13.4 mm

## Laser Specification

- Laser Type (Diode): AlGaInN (BD), AlGaInP (DVD/CD)
- Wave length: 405+7nm/-7nm (BD), 660+4nm/-10nm (DVD), 790+6/-6nm (CD)
- Output power: 1mW (BD), 0.3mW (DVD), 0.28mW (CD)

# 6 Troubleshooting



## Warning

- Risk of electric shock. Never remove the casing of the player.

To keep the warranty valid, never try to repair the player yourself.

If you have problems using this player, check the following points before you request service. If you still have a problem, register your player and get support at [www.philips.com/support](http://www.philips.com/support).

If you contact Philips, you will be asked for the model and serial number of this player. The model number and serial number are on the back of this player. Write the numbers here:

Model No. \_\_\_\_\_

Serial No. \_\_\_\_\_

## Main unit

### The buttons on this player do not work.


- Disconnect this player from the power supply for a few minutes, and then reconnect.

## Picture

### No picture.

- Make sure that the TV is switched to the correct source input for this player. .

### No picture on HDMI connection.

- Make sure that the HDMI cable is not faulty. If it is faulty, replace with a new HDMI cable.
- On the remote control, press  and then press "731" (numeric buttons) to recover picture display. Or wait for 10 seconds for auto recovery.
- If this player is connected to an unauthorized display device with an HDMI cable, the audio and video signals may not be output.

### The disc does not play high-definition video.

- Make sure that the disc contains high-definition video.

---

## Sound

### No audio output from the TV.

- Make sure that the TV is switched to the correct source input for this player.

### No audio output from the loudspeakers of the external audio device (home theater or amplifier).

- Switch the external audio device to the correct audio source input.

### No sound on HDMI connection.

- You may not hear any sound from the HDMI output if the connected device is non-HDCP compliant or only DVI-compatible.

### No secondary audio output for Picture-in-Picture feature.

- When **[Bitstream]** under the **[HDMI Audio]** or **[Digital Audio]** menu is selected, interactive sound like secondary sound for Picture-in-Picture feature is muted. Deselect **[Bitstream]**.

---

## Play

### Cannot play a disc.

- Clean the disc.
- Make sure that the disc is correctly loaded.
- Make sure that this player supports the disc. See "Specifications".
- Make sure that this player supports the region code of the DVD or BD.
- For DVD±RW or DVD±R, make sure that the disc is finalized.

### Cannot play DivX video files.

- Make sure that the DivX video file is complete.
- Make sure that the video file name extension is correct.

### DivX subtitles do not display correctly.

- Make sure that the subtitle file has the same name as the DivX video file.
- Make sure that the subtitle file has an extension name supported by this player (.srt, .sub, .txt, .ssa, or .smi).

### Cannot read the contents of a connected USB storage.

- Make sure that the format of the USB storage device is compatible with this player.
- Make sure that the file system on the USB storage device is supported by this player.
- For a USB HDD (a portable hard disc drive), an external power source may be needed.

### 'No entry' or 'x' sign is displayed on the TV.

- The operation is not possible.

### EasyLink feature does not work.

- Make sure that this player is connected to the Philips brand EasyLink TV, and the EasyLink option is turned on (see "Use your Blu-ray disc/ DVD player" > "Use Philips EasyLink").

### Cannot access BD-Live features.

- Make sure that this player is connected to the network (see "Use your Blu-ray disc/ DVD player" > "Set up a network").
- Make sure that the network installation is made (see "Use your Blu-ray disc/ DVD player" > "Set up a network").
- Make sure that the Blu-ray disc supports BD-Live features.
- Clear memory storage (see "Change settings" > "Advanced options (BD-Live security, clear memory...)").

---

## Network

### Wireless network is not found or distorted.

- Make sure that the network is correctly connected (see "Use your Blu-ray disc/ DVD player" > "Set up a network").
- Make sure that the network installation is made (see "Use your Blu-ray disc/ DVD player" > "Set up a network").

- Make sure that the wireless network is not disturbed by microwave ovens, DECT phones, or other neighboring Wi-Fi devices.
- If the wireless network does not work properly, try a wired network installation (see "Use your Blu-ray disc/ DVD player" > "Set up a network").

## 7 Safety and important notice

Read and understand all instructions before you use this Blu-ray disc/ DVD player. If damage is caused by failure to follow the instructions, the warranty does not apply.

---

### Safety

#### **Risk of electric shock or fire!**

- Never expose the product and accessories to rain or water. Never place liquid containers, such as vases, near the product. If liquids are spilt on or into the product, disconnect it from the power outlet immediately. Contact Philips Consumer Care to have the product checked before use.
- Never place the product and accessories near naked flames or other heat sources, including direct sunlight.
- Never insert objects into the ventilation slots or other openings on the product.
- Where the mains plug or an appliance coupler is used as the disconnect device, the disconnect device shall remain readily operable.
- Batteries (battery pack or batteries installed) shall not be exposed to excessive heat such as sunshine, fire or the like.
- Disconnect the product from the power outlet before lightning storms.
- When you disconnect the power cord, always pull the plug, never the cable.

#### **Risk of short circuit or fire!**

- Before you connect the product to the power outlet, ensure that the power voltage matches the value printed on the back or bottom of the product. Never

connect the product to the power outlet if the voltage is different.

#### **Risk of injury or damage to the product!**

- Visible and invisible laser radiation when open. Avoid exposure to beam.
- Do not touch the disc optical lens inside the disc compartment.
- Never place the product or any objects on power cords or on other electrical equipment.
- If the product is transported in temperatures below 5°C, unpack the product and wait until its temperature matches room temperature before connecting it to the power outlet.

#### **Risk of overheating!**

- Never install this product in a confined space. Always leave a space of at least four inches around the product for ventilation. Make sure that curtains or other objects never cover the ventilation slots on the product.

#### **Risk of contamination!**

- Do not mix batteries (old and new or carbon and alkaline, etc.).
- Remove batteries if they are exhausted or if the remote control is not to be used for a long time.
- Batteries contain chemical substances, they should be disposed of properly.

#### **Risk of swallowing batteries!**

- The product/remote control may contain a coin type battery, which can be swallowed.
- Keep the battery out of reach of children at all times!



---

## Care for your product

- Do not insert any objects other than discs into the disc compartment.
- Do not insert warped or cracked discs into the disc compartment.
- Remove discs from the disc compartment if you are not using the product for an extended period of time.
- Only use microfiber cloth to clean the product.

---

## Care of the environment



Your product is designed and manufactured with high quality materials and components, which can be recycled and reused. Never dispose of your product with other household waste. Please inform yourself about the local rules on the separate collection of electrical and electronic products and batteries. The correct disposal of these products helps prevent potentially negative consequences on the environment and human health. Your product contains batteries, which cannot be disposed of with normal household waste. Please inform yourself about the local rules on separate collection of batteries. The correct disposal of batteries helps prevent potentially negative consequences on the environment and human health. Please visit [www.recycle.philips.com](http://www.recycle.philips.com) for additional information on a recycling center in your area.

# Copyright



**Be responsible  
Respect copyrights**

This item incorporates copy protection technology that is protected by U.S. patents and other intellectual property rights of Rovi Corporation. Reverse engineering and disassembly are prohibited.

This product incorporates proprietary technology under license from Verance Corporation and is protected by U.S. Patent 7,369,677 and other U.S. and worldwide patents issued and pending as well as copyright and trade secret protection for certain aspects of such technology. Cinavia is a trademark of Verance Corporation. Copyright 2004-2010 Verance Corporation. All rights reserved by Verance. Reverse engineering or disassembly is prohibited.

## Cinavia Notice

This product uses Cinavia technology to limit the use of unauthorized copies of some commercially-produced film and videos and their soundtracks. When a prohibited use of an unauthorized copy is detected, a message will be displayed and playback or copying will be interrupted.

More information about Cinavia technology is provided at the Cinavia Online Consumer Information Center at <http://www.cinavia.com>. To request additional information about Cinavia by mail, send a postcard with your mailing address to: Cinavia Consumer Information Center, P.O. Box 86851, San Diego, CA, 92138, USA.

## Open source software

Philips Electronics Hong Kong Ltd. hereby offers to deliver, upon request, a copy of the complete corresponding source code for the copyrighted open source software packages used in this product for which such offer is requested by the respective licenses.

This offer is valid up to three years after product purchase to anyone in receipt of this

information. To obtain source code, please contact [open.source@philips.com](mailto:open.source@philips.com). If you prefer not to use email or if you do not receive confirmation receipt within a week after mailing to this email address, please write to "Open Source Team, Philips Intellectual Property & Standards, P.O. Box 220, 5600 AE Eindhoven, The Netherlands." If you do not receive timely confirmation of your letter, please email to the email address above.

## Notes to End User :

By using this product with RealNetworks software and services, the end user agrees to the following terms of REALNETWORKS, INC:

- End User may only use the software for private, non-commercial use in accordance with the terms of RealNetworks EULA.
- End User is not allowed to modify, translate, reverse engineer, decompile, disassemble or use other means to discover the source code or otherwise replicate the functionality of the Real Format Client Code, except to the extent that this restriction is expressly prohibited by applicable law.
- RealNetworks Inc. disclaims all warranties and conditions other than those set forth in this Agreement which are in lieu of all other warranties, whether express and implied, including but not limited to any implied warranties or conditions of merchantability and fitness for a particular purpose; and effectively exclude all liability for indirect, special, incidental and consequential damages, such as but not limited to lost profits.

---

## Trademarks



'Blu-ray Disc™' and 'Blu-ray Disc™' logo are trademarks of Blu-ray Disc Association.



HDMI, and HDMI logo and High-Definition Multimedia Interface are trademarks or registered trademarks of HDMI licensing LLC in the United States and other countries.



Manufactured under license from Dolby Laboratories. Dolby and the double-D symbol are trademarks of Dolby Laboratories.



Manufactured under license under U.S. Patent Nos: 5,956,674; 5,974,380; 6,487,535 & other U.S. and worldwide patents issued & pending. DTS, the Symbol, & DTS and the Symbol together are registered trademarks & DTS 2.0+Digital Out is a trademark of DTS, Inc. Product includes software. © DTS, Inc. All Rights Reserved.



ABOUT DIVX VIDEO: DivX® is a digital video format created by DivX, LLC, a subsidiary of Rovi Corporation. This is an official DivX Certified® device that plays DivX video. Visit [divx.com](http://divx.com) for more information and software tools to convert your files into DivX videos. ABOUT DIVX VIDEO-ON-DEMAND: This DivX Certified® device must be registered in order to play purchased DivX Video-on-

Demand (VOD) movies. To obtain your registration code, locate the DivX VOD section in your device setup menu. Go to [vod.divx.com](http://vod.divx.com) for more information on how to complete your registration.

DivX Certified® to play DivX® and DivX Plus® HD (H.264/MKV) video up to 1080p HD including premium content.

DivX®, DivX Certified®, DivX Plus® HD and associated logos are trademarks of Rovi Corporation or its subsidiaries and are used under license.



BONUSVIEW™

'BD LIVE™' and 'BONUSVIEW™' are trademarks of Blu-ray Disc Association.



'DVD Video' is a trademark of DVD Format/Logo Licensing Corporation.



RealNetworks, Real, the Real logo, RealPlayer, and the RealPlayer logo are trademarks or registered trademarks of RealNetworks, Inc.



Java and all other Java trademarks and logos are trademarks or registered trademarks of Sun Microsystems, Inc. in the United States and/or other countries.

## Language Code

Abkhazian	6566	Inupiaq	7375	Pushto	8083
Afar	6565	Irish	7165	Russian	8285
Afrikaans	6570	Íslenska	7383	Quechua	8185
Amharic	6577	Italiano	7384	Raeto-Romance	8277
Arabic	6582	Ivrit	7269	Romanian	8279
Armenian	7289	Japanese	7465	Rundi	8278
Assamese	6583	Javanese	7486	Samoan	8377
Avestan	6569	Kalaallisut	7576	Sango	8371
Aymara	6589	Kannada	7578	Sanskrit	8365
Azerhøjani	6590	Kashmiri	7583	Sardinian	8367
Bahasa Melayu	7783	Kazakh	7575	Serbian	8382
Bashkir	6665	Kernewek	7587	Shona	8378
Belarusian	6669	Khmer	7577	Shqip	8381
Bengali	6678	Kinyarwanda	8287	Sindhi	8368
Bihari	6672	Kirghiz	7589	Sinhalese	8373
Bislama	6673	Komi	7586	Slovensky	8373
Bokmål, Norwegian	7866	Korean	7579	Slovenian	8376
Bosanski	6683	Kuanyama; Kwanyama	7574	Somali	8379
Brezhoneg	6682	Kurdish	7585	Sotho; Southern	8384
Bulgarian	6671	Lao	7679	South Ndebele	7882
Burmese	7789	Latina	7665	Sundanese	8385
Castellano, Español	6983	Latvian	7686	Suomi	7073
Catalán	6765	Letzeburgesch;	7666	Swahili	8387
Chamorro	6772	Limburgan; Limburger	7673	Swati	8383
Chechen	6769	Lingala	7678	Svenska	8386
Chewa; Chichewa; Nyanja	7889	Lithuanian	7684	Tagalog	8476
中文	9072	Luxembourgish;	7666	Tahitian	8489
Chuang; Zhuang	9065	Macedonian	7775	Tajik	8471
Church Slavíc; Slavonic	6785	Malagasy	7771	Tamil	8465
Chuvash	6786	Magyar	7285	Tatar	8484
Corsican	6779	Malayalam	7776	Telugu	8469
Česky	6783	Maltese	7784	Thai	8472
Dansk	6865	Manx	7186	Tibetan	6679
Deutsch	6869	Maori	7773	Tigrinya	8473
Dzongkha	6890	Marathi	7782	Tonga (Tonga Islands)	8479
English	6978	Marshallese	7772	Tsonga	8483
Esperanto	6979	Moldavian	7779	Tswana	8478
Estonian	6984	Mongolian	7778	Türkçe	8482
Euskara	6985	Nauru	7865	Türkmen	8475
Ελληνικά	6976	Navaho; Navajo	7886	Twi	8487
Faroese	7079	Ndebele, North	7868	Uighur	8571
Français	7082	Ndebele, South	7882	Ukrainian	8575
Frysk	7089	Ndonga	7871	Urdu	8582
Fijian	7074	Nederlands	7876	Uzbek	8590
Gaelic; Scottish Gaelic	7168	Nepali	7869	Vietnamese	8673
Galligan	7176	Norsk	7879	Volapuk	8679
Georgian	7565	Northern Sami	8369	Walloon	8765
Gikuyu; Kikuyu	7573	North Ndebele	7868	Welsh	6789
Guarani	7178	Norwegian Nynorsk;	7878	Wolof	8779
Gujarati	7185	Occitan; Provençal	7967	Xhosa	8872
Hausa	7265	Old Bulgarian; Old Slavonic	6785	Yiddish	8973
Herero	7290	Oriya	7982	Yoruba	8979
Hindi	7273	Oromo	7977	Zulu	9085
Hiri Motu	7279	Ossetian; Ossetic	7983		
Hrwatski	6779	Pali	8073		
Ido	7379	Panjabi	8065		
Interlingua (International)	7365	Persian	7065		
Interlingue	7365	Polski	8076		
Inuktitut	7385	Português	8084		



Specifications are subject to change without notice  
© 2012 Koninklijke Philips Electronics N.V.  
All rights reserved.

BDP2930\_96\_UM\_V1.2

