

PHILIPS

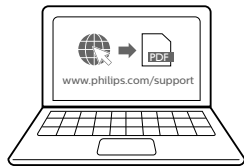
Quick Start Guide

Micro music system

BTM2560
BTM2585



Register your product and get support at
www.philips.com/support



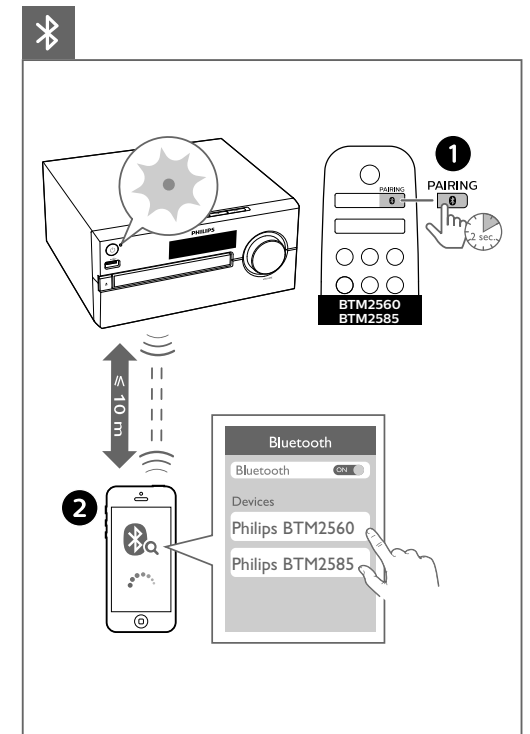
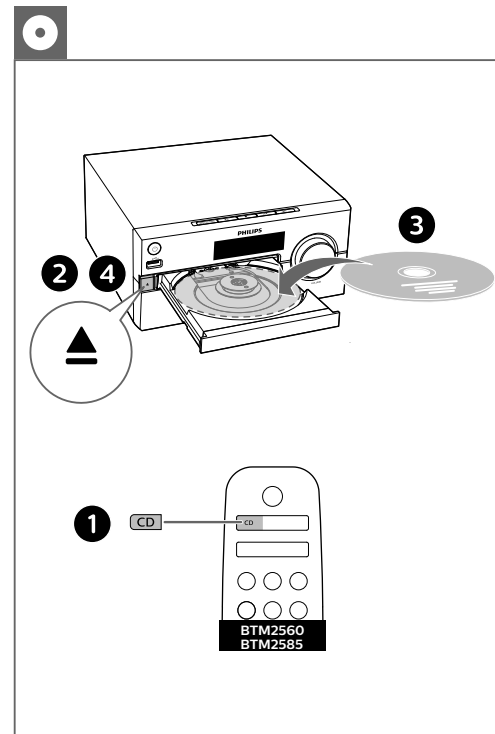
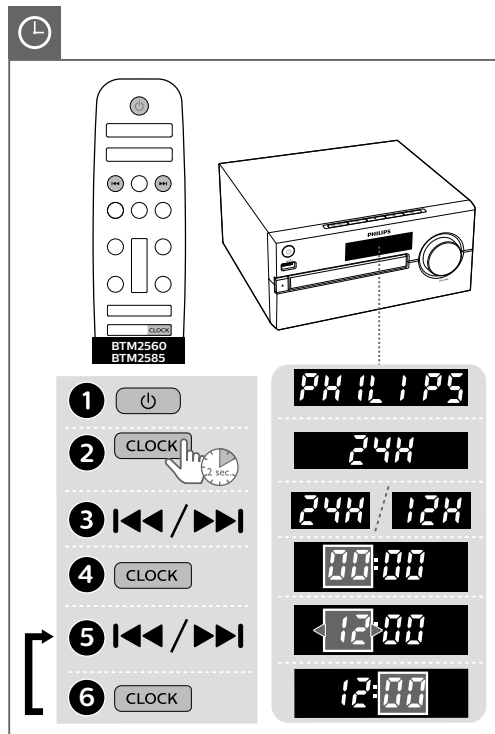
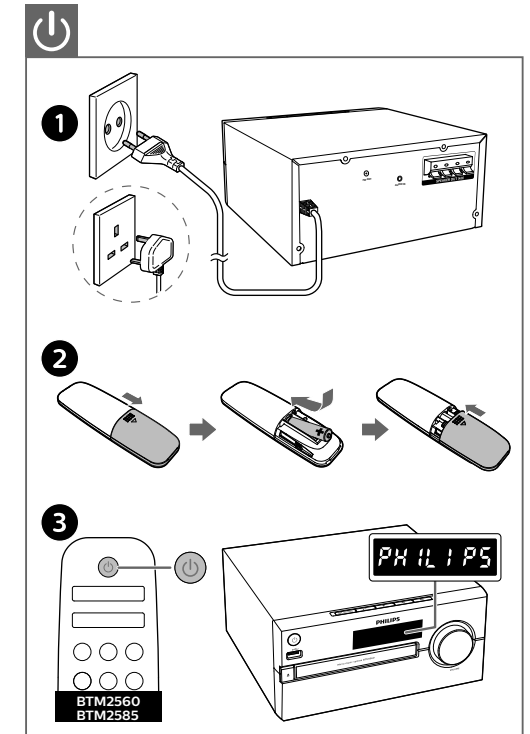
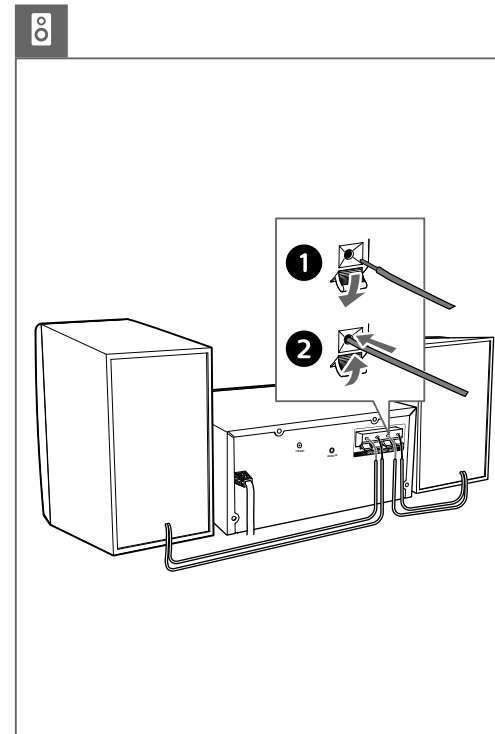
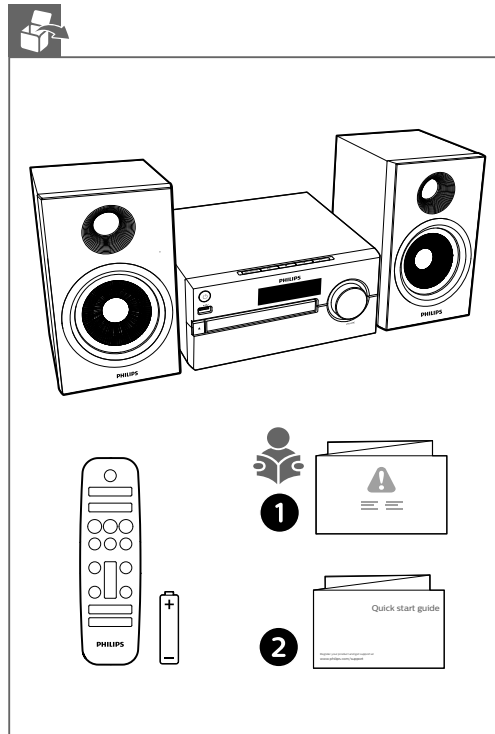
www.philips.com/support



Specifications are subject to change without notice. This product has been manufactured by, and is sold under the responsibility of Gibson Innovations Ltd., and Gibson Innovations Ltd. is the warrantor in relation to this product. Philips and the Philips Shield Emblem are registered trademarks of Koninklijke Philips N.V. and are used under license.



BTM2560_2585_12_QSG_V2.0



FM ANT

**BTM2560
BTM2585**

- 1** FM
- 2** A |◀/▶|
- 2** B |◀/▶|

tuner
87.75 MHz
PROG
98.70 MHz

**BTM2560
BTM2585**

- 1** FM
- 2** SCAN
PROG
- 3** ▲/▼

tuner
PROG
98.70 MHz

1

2 AUDIO IN
USB

3 ▶

**BTM2560
BTM2585**

1

2 AUDIO IN
USB

**BTM2560
BTM2585**

**3.5MM
STEREO**

**SLEEP
TIMER**

**BTM2560
BTM2585**

- 1** [Power]
- 2** SLEEP
TIMER
- 3** |◀/▶|
- 4** SLEEP
TIMER
- 5** |◀/▶|
- 6** SLEEP
TIMER
- 7** |◀/▶|
- 8** |◀/▶|
- 9** SLEEP
TIMER

12:28
00:00
08:00
08:00

08:30
USB
8:15
12
t-07

**SLEEP
TIMER**

**BTM2560
BTM2585**

SLEEP
TIMER

120
90
60
30
15
OFF

1

2 AUDIO IN
USB

**BTM2560
BTM2585**