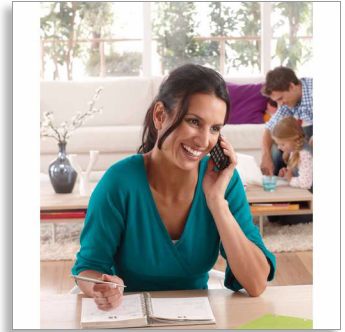




Philips BeNear  
Cordless phone with  
answering machine

- 1000-series
- Black



CD1951B

## Bringing people closer

Keep it simple

Designed for complete simplicity, this phone gives you all the benefits of long-lasting ergonomic comfort, and great sound reproduction. With easy installation, inbuilt answering machine, and an intuitive menu, it is simplicity itself.

### Crystal clear sound

- Advanced sound testing and tuning for superb voice quality
- The Parametric Equaliser delivers pure and clear sound
- Automatic Volume Control offsets unwanted volume variation
- Optimised antenna layout for great reception in any room

### Nice and simple

- Up to 15 min. message on your answering machine
- Easy to read 4.1 cm (1.6") display with amber backlight
- Ultimate convenience through easy setup
- Save up to 50 of your favourite contacts in your phonebook
- Caller ID — so you always know who is calling
- Up to 16 hours of talk time

### Eco-conscious product

- Low power consumption: < 0.65 W in standby mode
- Up to 95% reduction of emitted radiation in charging mode

# PHILIPS

# Highlights

## Advanced sound testing



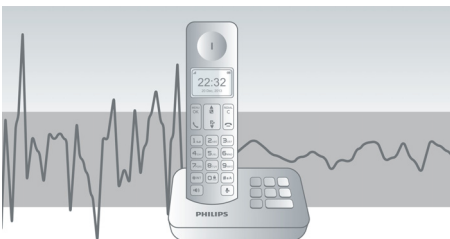
We test the sound quality of our DECT phones the same way as high-end headphone manufacturers do. Using an advanced ear simulator, we can accurately re-create the way people actually hear. This helps our acoustic engineers to measure and fine-tune things like frequency response, distortion and overall hearing perception, to create perfect voice reproduction for both handset and hands-free modes.

## Parametric Equaliser



Our telephones use parametric equalisation in the digital sound processing to fine tune the sound response back to the intended linear frequency response curve, delivering sound that is pure and clear, for each conversation.

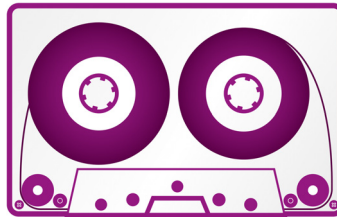
## Automatic Volume Control



Automatic Volume Control offsets variations in sound signal, which can be caused by

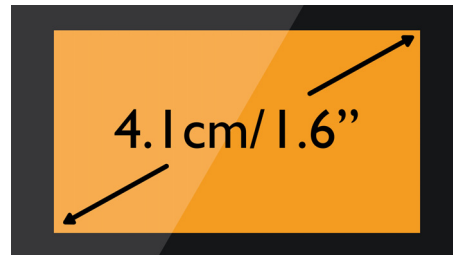
distance, signal strength or the caller's phone — so what you hear always remains consistent. Reducing the audio amplification for strong signals, and increasing it for weak ones, means you can enjoy a smooth conversation without unwanted sound volume variation.

## Up to 15 min. recording



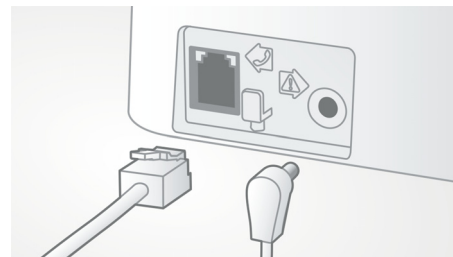
With up to 15 minutes recording time, you'll never miss an important message.

## 4.1 cm (1.6") display



Easy to read 4.1 cm (1.6") display with amber backlight

## Easy setup



Ultimate convenience through easy set up. Simplified installation - Plug and Play product

## 50-name phone book



Always have the phone numbers of your loved ones available: Save up to 50 names in your phonebook.

## Caller ID



Sometimes it's good to know who's calling before you answer. And our Caller ID lets you keep track of who's on the other end of the line.

## Optimised antenna layout



Our optimised antenna layout ensures strong and stable reception, even in areas of the house where cordless transmission is difficult. Now you can take a call wherever you are in the house, and enjoy a long, uninterrupted conversation even as you walk around.

# Specifications

## Sound

- Volume control on handset
- Ringtones on handset: 10 standard

## Picture/Display

- Display size: 4.1 cm/1.6"
- Display type: Black and White; alphanumeric
- Backlight: Yes
- Backlight colour: Amber

## Answering Machine

- Recording time capacity: up to 12 minutes
- Pre-recorded OGM
- Loud speaker on base
- Answering Machine control:: from base and handset

## Convenience

- Menu structure in the handset: List Menu
- Signal strength indicator: 3- bar indicator
- Battery level indicator: 3- bar battery icon
- Date/Time display
- Base Station keys: Paging key
- Programmable hot keys: Key 1 and 2
- Auto Registration
- Auto hang up
- Key tone on/off
- Call Management: Call Waiting, Caller ID, Microphone mute, Missed Calls, Received Calls
- Multi-base capability: 1
- Multi-handset capability: Up to 4

- Line cord length: 1.8 m
- Power cord length: 1.8 m
- Charge time: 8 hours
- Up to 16 hrs talk time
- Up to 250 hrs standby time
- Range: Open field <300 m; indoor <50 m

## Memory Capacity

- Phonebook: 50 names and numbers
- Redial List Capacity: 10 entries
- Call log entries: 20 entries
- Phonebook store in the base

## Power

- Battery capacity: 600 mAh
- Battery type: AAA NiMH Rechargeable
- Mains power: AC 100-240 V ~50/60 Hz
- Power Consumption: < 0.65 W

## Security

- Transmission encryption: Yes

## Network Features

- Compatible: GAP

## SAR Value

- Philips handsets: <0.1 W/kg

## Eco Design

- EcoMode: automatic



Issue date 2013-07-19

Version: 3.1.4

12 NC: 8670 000 80273  
EAN: 87 12581 61552 9

© 2013 Koninklijke Philips N.V.  
All Rights reserved.

Specifications are subject to change without notice.  
Trademarks are the property of Koninklijke Philips N.V.  
or their respective owners.

[www.philips.com](http://www.philips.com)