

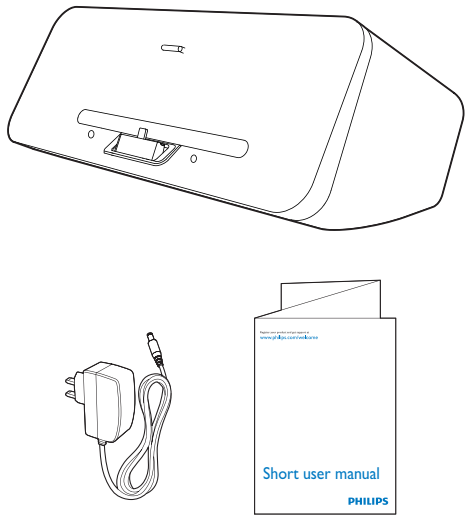


AD385/93

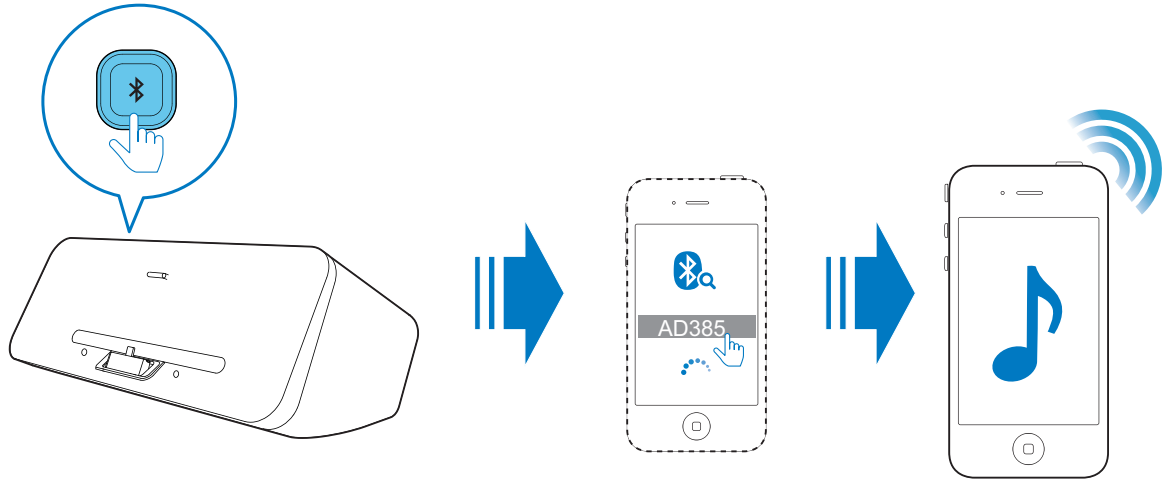
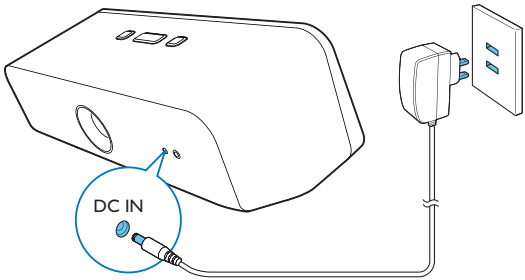
EN Short User Manual
ZH-CN 简版用户手册

Philips Electronics Hong Kong Ltd.

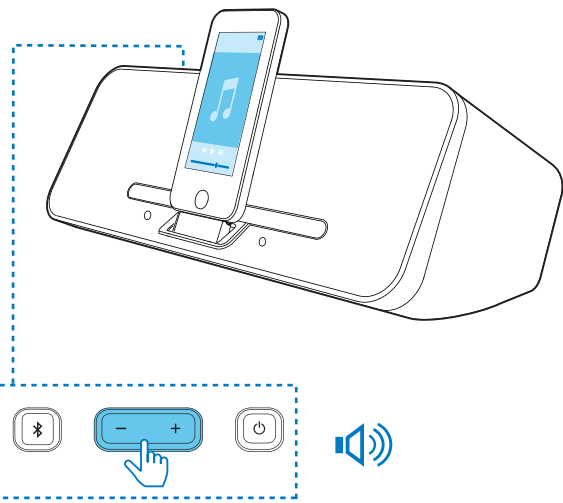
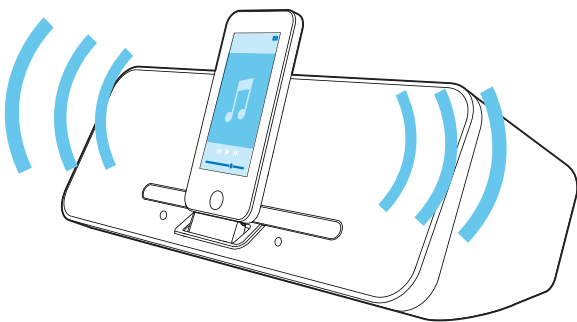
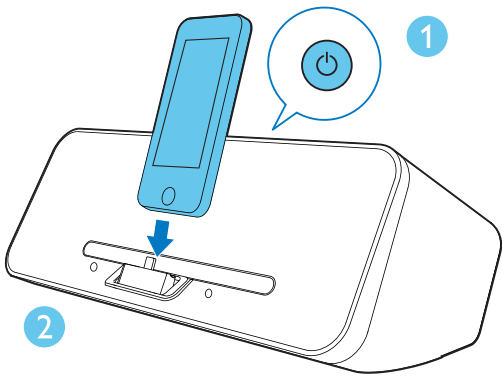
PHILIPS



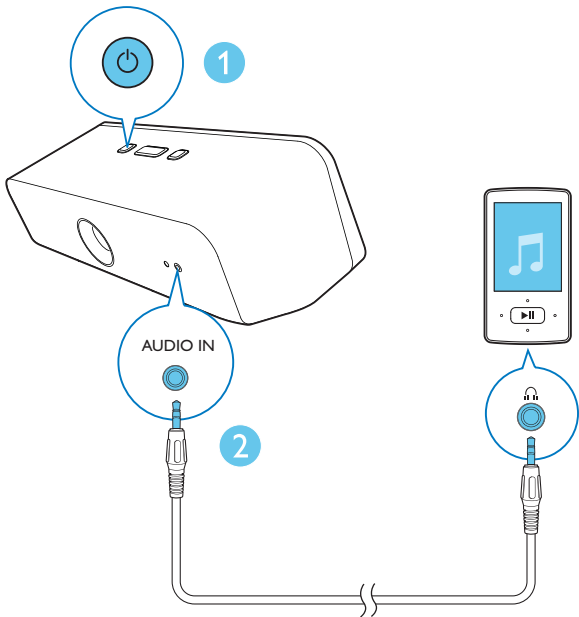
Before using your product, read all accompanying safety information.
使用前请阅读所有相关安全信息。



The speaker beeps twice when it successfully pairs with a bluetooth device.
如果连接成功，音乐基座将发出两声蜂鸣音

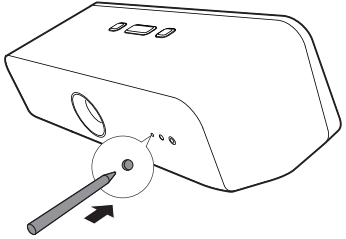



You can only charge your iPod/iPhone when the docking speaker is powered by AC supply.
音乐基座只可以通过交流电为iPod/iPhone充电。

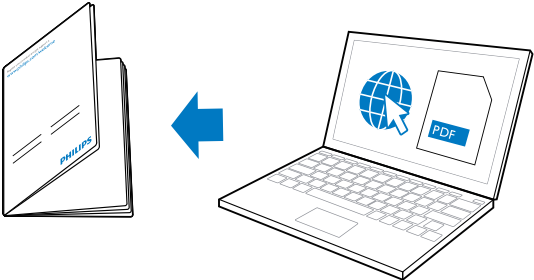


!

Reset / 重置

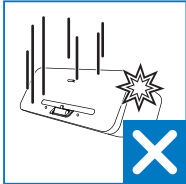

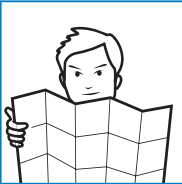



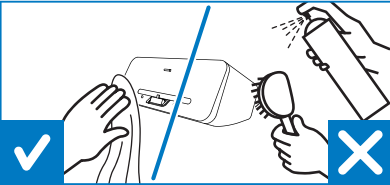


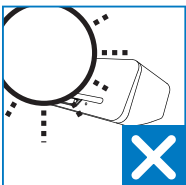
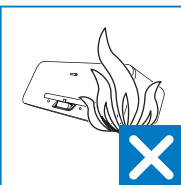
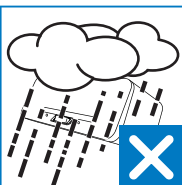


To get the detailed instructions for use, visit www.philips.com/support.
请访问 www.philips.com/support 获得详细的使用帮助。

!







EN

Read and understand all instructions before you use this product. If damage is caused by failure to follow the instructions, the warranty does not apply.

Safety

!


Warning


- Never remove the casing of this apparatus.
- Never lubricate any part of this apparatus.
- Never look into the laser beam inside this apparatus.
- Never place this apparatus on other electrical equipment.
- Keep this apparatus away from direct sunlight, naked flames or heat.
- Ensure that you always have easy access to the power cord, plug or adaptor to disconnect the apparatus from the power.

- The device shall not exposed to dripping or splashing.
- Do no place any source of danger on the device (e.g. liquid filled objects, lit candles).
- Where the plug of the Direct Plug-in Adapter is used as the disconnect device, the disconnect device shall remain readily operable.
- Make sure that there is enough free space around the product for ventilation.
- Only use attachments/accessories specified by the manufacturer.
- The batteries should not be exposed to excessive heat such as sunshine fire or the like.
- Danger of explosion if battery is incorrectly replaced. Replace only with the same or equivalent type.
- Only use power supplies listed in the user manual.

ZH-CN

Any changes or modifications made to this device that are not expressly approved by Philips Consumer Lifestyle may void the user's authority to operate the equipment.





When this crossed-out wheeled bin symbol is attached to a product it means that the product is covered by the European Directive 2002/96/EC. Please inform yourself about the local separate collection system for electrical and electronic products. Please act according to your local rules and do not dispose of your old products with your normal household waste. Correct disposal of your old product helps to prevent potential negative consequences for the environment and human health.

Your product contains batteries covered by the European Directive 2006/66/EC, which cannot be disposed with normal household waste. Please inform yourself about the local rules on separate collection of batteries because correct disposal helps to prevent negative consequences for the environment and human health.

Environmental information

All unnecessary packaging has been omitted. We have tried to make the packaging easy to separate into three materials: cardboard (box), polystyrene foam (buffer) and polyethylene (bags, protective foam sheet.)

Your system consists of materials which can be recycled and reused if disassembled by a specialized company. Please observe the local regulations regarding the disposal of packaging materials, exhausted batteries and old equipment.

Be responsible
Respect copyrights

The making of unauthorized copies of copy-protected material, including computer programs, files, broadcasts and sound recordings, may be an infringement of copyrights and constitute a criminal offence. This equipment should not be used for such purposes.

Made for
iPod iPhone

"Made for iPod" and "Made for iPhone" mean that an electronic accessory has been designed to connect specifically to iPod or iPhone respectively, and has been certified by the developer to meet Apple performance standards. Apple is not responsible for the operation of this device or its compliance with safety and regulatory standards. Please note that the use of this accessory with iPod or iPhone may affect wireless performance.
iPod and iPhone are trademarks of Apple Inc., registered in the U.S. and other countries.

Specifications	
Rated Output Power	2 x 4 W RMS
Standard	Bluetooth Standard Version 2.1+EDR
Frequency band	2.402 ~ 2.480 GHzISM Band
Range	10 m (free space)
Power supply - AC Power	Model: (KTEC) KSASB0241200150HC ; Input: 100-240 V ~50/60Hz, 0.6A; Output: 12 V === 1.5 A
- Battery	Li-ion polymer internal rechargeable battery 7.4V/10WH
Operation Power Consumption	<10.5 W
Standby Power Consumption	<0.5 W
Max. load for iPod/iPhone	5 V === 1 A
Dimensions - Main Unit (W x H x D)	300 x 119 x 164 mm
Weight - Main Unit	1.45 kg
Operation temperature and humidity	0°C to 45°C, 5% to 90% Humidity for all climates.
Storage temperature and humidity	-40°C to 70°C , 5% to 95%

≡

Note

- The type plate is located on the bottom of the apparatus.

ZH-CN

请在使用本产品之前阅读并理解所有说明。 因未遵守说明而造成的损坏不在保修范围内。

安全

!


警告

- 切勿拆下本产品的外壳。
- 切勿润滑本装置的任何部件。
- 切勿直视本装置内部的激光束。
- 切勿将本装置放在其它电器设备上面。
- 应让本装置远离阳光直射、明火或高温。
- 确保始终可轻易地接触到电源线、电源插头或适配器，以便于将本装置从电源上断开。


- 切勿将设备暴露 in 漏水或溅水环境下。
- 不要将任何危险源放在本设备上（例如装有液体的物体、 点燃的蜡烛）。
- 如果将直插式适配器的插头用作断开设备，则断开设备应可以随时使用。
- 请确保产品周围有足够的空间进行通风。
- 仅使用制造商指定的附件/配件。
- 不可将电池置于高温环境， 如阳光直射处、明火或类似环境。
- 电池安装不正确会有爆炸危险。只能用相同或相当的型号更换。
- 仅使用用户手册中列出的电源。

ZH-CN


如果用户未经 Philips 优质生活部门的明确许可而擅自对此设备进行更改或修改，则可能导致其无权操作此设备。



本产品采用可回收利用的高性能材料和组件制造而成。



如果产品上贴有带叉的轮式垃圾桶符号，则表示此产品符合欧盟指令 2002/96/EC。请熟悉当地针对电子和电器产品制订的分门别类的收集机制。请遵循当地的规章制度，不要将旧产品与一般的生活垃圾一同弃置。 正确弃置旧产品有助于避免对环境和人类健康造成潜在的负面影响。



本产品包含欧盟指令 2006/66/EC 涉及的电池，该电池不可与普通生活垃圾一起处理。请自行了解当地关于分类收集电池的规定，正确弃置电池有助于避免对环境和人类健康造成负面影响。

环境信息

已省去所有不必要的包装。 我们努力使包装易于分为三种材料： 纸板（盒）、 泡沫塑料（缓冲物）和聚乙烯（袋、保护性泡沫片）。
您的系统包含可回收利用的材料（如果由专业公司拆卸）。 请遵守当地有关包装材料、废电池和旧设备的处理的规定。

Be responsible
Respect copyrights

进行受版权保护材料（包括计算机程序、文件、广播和录音）的未经授权复制可能会侵犯版权并构成犯罪。 不得将此设备用于这些目的。

Made for
iPod iPhone

"Made for iPod" 和 "Made for iPhone" 表示电子附件专为连接 iPod 或 iPhone 而设计，并经开发人员认证，符合 Apple 性能标准。 Apple 对该设备的操作及其是否符合安全和法规标准不负任何责任。 请注意，通过 iPod 或 iPhone 使用该附件可能影响无线性能。
iPod 和 iPhone 是 Apple Inc. 在美国 和其它国家/地区注册的商标。

≡

注

- 型号铭牌位于本设备的底部。

规格

额定输出功率	2 X 3 瓦 RMS
标准	蓝牙标准版本 2.1+ EDR
频段	2.402 ~ 2.480 GHzISM 频段
范围	10 米（开阔空间）
电源	型号： (KTEC) KSASB0241200150HC； 输入： 约 100-240 伏， 50/60 赫兹， 0.6 安； 输出： 12 伏 === 1.5 安 7.4V/10WH内置锂电池
- 交流电源	
- 电池	
操作功耗	<10.5 瓦
待机功耗	< 0.5 瓦
最大 iPod/iPhone 的载入	5 伏 === 1 安
尺寸 - 主装置（宽 x 高 x 厚）	300 x 119 x 164 毫米
重量 - 主装置	1.45 千克
操作温度和湿度	0` C至45` C， 5％至90％的湿度为所有的气候。
贮藏温度和湿度	-40` C至 70` C， 5% 至 95%

部件名称 Name of the Parts	有毒有害物质或元素 Hazardous/toxic Substance					
	铅 (Pb, Lead)	汞 (Hg, Mercury)	镉 (Cd, cadmium)	六价铬(Chromium 6+)	多溴联苯 (PBB)	多溴二苯醚 (PBDE)
Housing 外壳	○	○	○	○	○	○
Loudspeakers 喇叭单元	○	○	○	○	○	○
PWBs 电路板组件	x	○	○	○	○	○
Accessories (Remote control & cables) 附件（遥控器、电源线、连接线）	x	○	○	○	○	○

○：表示该有毒有害物质在该部件所有均质材料中的含量均在SJ/T11363 - 2006 标准规定的限量要求以下。
○: Indicates that this toxic or hazardous substance contained in all of the homogeneous materials for this part is below the limit requirement in SJ/T11363 – 2006.

x：表示该有毒有害物质至少在该部件的某一均质材料中的含量超出SJ/T11363 – 2006 标准规定的限量要求。
X: Indicates that this toxic or hazardous substance contained in at least one of the homogeneous materials used for this part is above the limit requirement in SJ/T11363 - 2006.

10

环保使用期限 Environmental Protection Use Period

This logo refers to the period (10 years)
电子信息产品中含有的有毒有害物质或元素在正常使用的条件下不会发生外泄或突变，电子信息产品用户使用该电子信息产品不会对环境造成严重污染或对其人身、财产造成严重 损害的期限。

This logo refers to the period (10 years) during which the toxic or hazardous substances or elements contained in electronic information products will not leak or mutate so that the use of these [substances or elements] will not result in any severe environmental pollution, any bodily injury or damage to any assets.