

Register your product and get support at
www.philips.com/welcome

HTS3231



PHILIPS

Contents

1 Notice	2
Copyright	2
Compliance	2
Mains fuse (UK only)	2
Open source software	2
Trademarks	2
2 Important	4
Safety	4
Product care	4
3D health warning	5
Disposal of your old product and batteries	5
3 Your home theater	6
Main unit	6
Remote control	6
4 Connect your home theater	8
Connectors	8
Connect to the TV	8
Connect audio from TV or other devices	9
Connect to the internet	9
5 Use your home theater	10
Before you start	10
Access the home menu	10
Choose your sound	11
Play a disc	12
Use Bonus View on Blu-ray	12
Access BD-Live on Blu-ray	12
Play 3D video	13
Play from a USB storage device	13
More play features for disc or USB	14
Play from radio	15
Play audio from TV or other devices	15
Play from an MP3 player	15
Use Philips EasyLink	16

6 Change settings	16
Access the setup menu	16
Change video settings	16
Change audio settings	17
Set up network	17
Set up EasyLink	17
Change preference settings	18
Change advanced settings	18
7 Update software	19
Check software version	19
Update software from the network	19
Update software from a USB	19
8 Product specifications	20
9 Troubleshooting	21
10 Index	22

1 Notice

Copyright



**Be responsible
Respect copyrights**

This item incorporates copy protection technology that is protected by U.S. patents and other intellectual property rights of Rovi Corporation. Reverse engineering and disassembly are prohibited.

Copyright in the UK

Recording and playback of material may require consent. See Copyright Act 1956 and The Performers Protection Acts 1958 to 1972.

Compliance



This product is in compliance with the essential requirements and other relevant provisions of Directives 2006/95/EC (Low Voltage), 2004/108/EC (EMC).

Mains fuse (UK only)

This product is fitted with an approved moulded plug. Should it become necessary to replace the mains fuse, this must be replaced with a fuse of the same value as indicated on the plug (example 10A).

- 1 Remove fuse cover and fuse.
- 2 The replacement fuse must comply with BS 1362 and have the ASTA approval mark. If the fuse is lost, contact your dealer in order to verify the correct type.
- 3 Refit the fuse cover.



Note

- To conform with the EMC directive (2004/108/EC), the mains plug on this product must not be detached from the mains cord.

Open source software

Philips Electronics Singapore Pte Ltd hereby offers to deliver; upon request, a copy of the complete corresponding source code for the copyrighted open source software packages used in this product for which such offer is requested by the respective licenses. This offer is valid up to three years after product purchase to anyone in receipt of this information. To obtain source code, please contact open.source@philips.com. If you prefer not to use email or if you do not receive confirmation receipt within a week after mailing to this email address, please write in English to "Open Source Team, Philips Intellectual Property & Standards, P.O. Box 220, 5600 AE Eindhoven, The Netherlands". If you do not receive timely confirmation of your letter, please email to the email address above. The texts of the licenses and acknowledgements for open source software used in this product are included on a separate leaflet.

Trademarks



"Blu-ray 3D" and "Blu-ray 3D" logo are trademarks of Blu-ray Disc Association.



BONUSVIEW™

'BD LIVE' and 'BONUSVIEW' are trademarks of Blu-ray Disc Association.



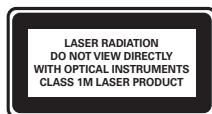
Java and all other Java trademarks and logos are trademarks or registered trademarks of Sun Microsystems, Inc. in the United States and/or other countries.

x.v.Colour

'x.v.Colour' is a trademark of Sony Corporation.



Manufactured under license from Dolby Laboratories. Dolby, Pro Logic, and the double-D symbol are trademarks of Dolby Laboratories.



Manufactured under license under U.S. Patent #'s: 5,451,942; 5,956,674; 5,974,380; 5,978,762; 6,226,616; 6,487,535; 7,392,195; 7,272,567; 7,333,929; 7,212,872 & other U.S. and worldwide patents issued & pending. DTS and the Symbol are registered trademarks, & DTS-HD, and DTS-HD Master Audio | Essential and the DTS logos are trademarks of DTS, Inc. Product includes software. © DTS, Inc. All Rights Reserved.



DivX®, DivX Certified® and associated logos are registered trademarks of DivX, Inc. and are used under license.

DivX Ultra® Certified to play DivX® video with advanced features and premium content.

ABOUT DIVX VIDEO: DivX® is a digital video format created by DivX, Inc. This is an official DivX Certified device that plays DivX video. Visit www.divx.com for more information and software tools to convert your files into DivX video.

ABOUT DIVX VIDEO-ON-DEMAND: This DivX Certified ® device must be registered in order to play DivX Video-on-Demand (VOD) content. To generate the registration code, locate the DivX VOD section in your device setup menu. Go to vod.divx.com with this code to complete the registration process and learn more about DivX VOD.



HDMI, and HDMI logo, and High-Definition Multimedia Interface are trademarks or registered trademarks of HDMI licensing LLC in the United States and other countries.

2 Important

Read and understand all instructions before you use your home theater. If damage is caused by failure to follow instructions, the warranty does not apply.

Safety

Risk of electric shock or fire!

- Never expose the product and accessories to rain or water. Never place liquid containers, such as vases, near the product. If liquids are spilt on or into the product, disconnect it from the power outlet immediately. Contact Philips Consumer Care to have the product checked before use.
- Never place the product and accessories near naked flames or other heat sources, including direct sunlight.
- Never insert objects into the ventilation slots or other openings on the product.
- Where the mains plug or an appliance coupler is used as the disconnect device, the disconnect device shall remain readily operable.
- Disconnect the product from the power outlet before lightning storms.
- When you disconnect the power cord, always pull the plug, never the cable.

Risk of short circuit or fire!

- Before you connect the product to the power outlet, ensure that the power voltage matches the value printed on the back or bottom of the product. Never connect the product to the power outlet if the voltage is different.

Risk of injury or damage to the home theater!

- For wall-mountable products, use only the supplied wall mount bracket. Secure the wall mount to a wall that can support the combined weight of the product and the wall mount. Koninklijke Philips Electronics N.V. bears no responsibility for improper wall mounting that results in accident, injury or damage.

- For speakers with stands, use only the supplied stands. Secure the stands to the speakers tightly. Place the assembled stands on flat, level surfaces that can support the combined weight of the speaker and stand.
- Never place the product or any objects on power cords or on other electrical equipment.
- If the product is transported in temperatures below 5°C, unpack the product and wait until its temperature matches room temperature before connecting it to the power outlet.
- Visible and invisible laser radiation when open. Avoid exposure to beam.
- Do not touch the disc optical lens inside the disc compartment.

Risk of overheating!

- Never install this product in a confined space. Always leave a space of at least four inches around the product for ventilation. Ensure curtains or other objects never cover the ventilation slots on the product.

Risk of contamination!

- Do not mix batteries (old and new or carbon and alkaline, etc.).
- Remove batteries if they are exhausted or if the remote control is not to be used for a long time.
- Batteries contain chemical substances, they should be disposed of properly.

Product care

- Do not insert any objects other than discs into the disc compartment.
- Do not insert warped or cracked discs into the disc compartment.
- Remove discs from the disc compartment if you are not using the product for an extended period of time.
- Only use microfiber cloth to clean the product.

3D health warning

If you or your family has a history of epilepsy or photosensitive seizures, consult a medical professional before exposing yourself to flashing light sources, rapid image sequences or 3D viewing.

To avoid discomfort such as dizziness, headache or disorientation, we recommend not watching 3D for extended periods of time. If you experience any discomfort, stop watching 3D and do not immediately engage in any potentially hazardous activity (for example driving a car) until your symptoms have disappeared. If symptoms persist, do not resume watching 3D without consulting a medical professional first.

Parents should monitor their children during 3D viewing and ensure they do not experience any discomfort as mentioned above. Watching 3D is not recommended for children under six years of age as their visual system is not fully developed yet.



Your product contains batteries covered by the European Directive 2006/66/EC, which cannot be disposed with normal household waste.

Please inform yourself about the local rules on separate collection of batteries because correct disposal helps to prevent negative consequences for the environmental and human health.

Disposal of your old product and batteries



Your product is designed and manufactured with high quality materials and components, which can be recycled and reused.



When this crossed-out wheeled bin symbol is attached to a product it means that the product is covered by the European Directive 2002/96/EC. Please inform yourself about the local separate collection system for electrical and electronic products.

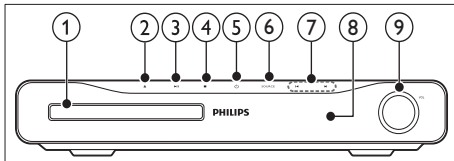
Please act according to your local rules and do not dispose of your old products with your normal household waste.

Correct disposal of your old product helps to prevent potential negative consequences for the environment and human health.

3 Your home theater

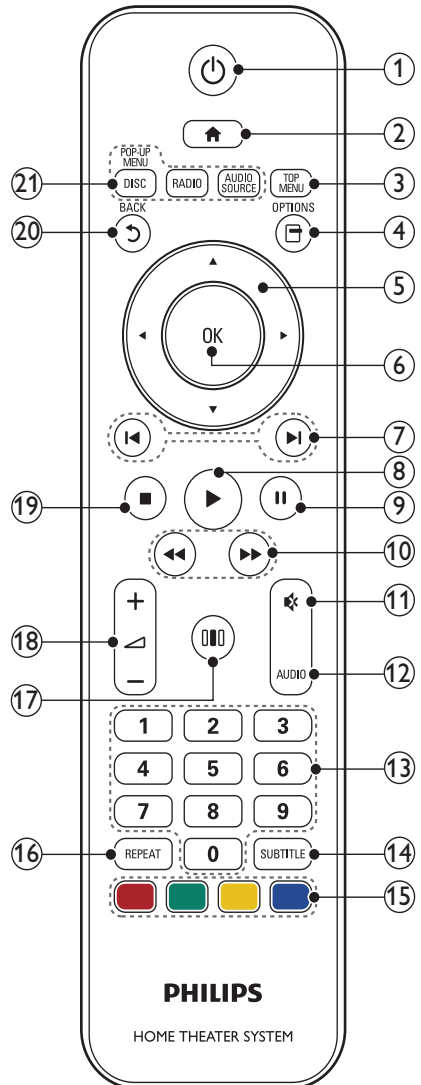
Congratulations on your purchase, and welcome to Philips! To fully benefit from the support that Philips offers, register your home theater at www.philips.com/welcome.

Main unit



- ① Disc compartment
- ② ▲ (Open/Close)
Opens or closes the disc compartment.
- ③ ►|| (Play/Pause)
Starts, pauses or resumes play.
- ④ ■ (Stop)
 - Stops play.
 - In radio mode, erases the current preset radio station.
- ⑤ ⏻ (Standby-On)
Switches the home theater on or to standby.
- ⑥ SOURCE
Selects an audio/video source for the home theater.
- ⑦ ◀/▶
 - Skips to the previous or next track, chapter or file.
 - In radio mode, selects a preset radio station.
- ⑧ Display panel
- ⑨ Volume control wheel

Remote control



- ① ⏻ (Standby-On)
 - Switches the home theater on or to standby.
 - When EasyLink is enabled, press and hold for at least three seconds to switch all connected HDMI CEC compliant devices to standby.

- ② **🏠 (Home)**
Accesses the home menu.
- ③ **TOP MENU**
Accesses the main menu of a video disc.
- ④ **☐ (Options)**
- Accesses more play options during playback.
 - In radio mode, programs radio stations.
- ⑤ **Navigation buttons**
- Navigates menus.
 - In radio mode, press left or right to start auto search.
- ⑥ **OK**
Confirms an entry or selection.
- ⑦ **◀ / ▶ (Previous/Next)**
- Skips to the previous or next track, chapter or file.
 - In radio mode, selects a preset radio station.
- ⑧ **▶(Play)**
Starts or resumes play.
- ⑨ **⏸ (Pause)**
Pauses play.
- ⑩ **◀◀ / ▶▶ (Fast Backward / Fast Forward)**
Fast backwards or fast forwards. Press repeatedly to change the search speed.
- ⑪ **🔇 (Mute)**
Mutes or restores volume.
- ⑫ **AUDIO**
In video mode, toggle between audio languages.
In radio mode, toggle between stereo and mono.
- ⑬ **Numeric buttons**
Selects an item to play.
- ⑭ **SUBTITLE**
Selects subtitle language for video.
- ⑮ **Color buttons**
Blu-ray discs only: Select a task or option.
- ⑯ **REPEAT**
Selects or turns off repeat mode.
- ⑰ **🔊 (Sound options)**
Accesses or exits various sound options.
- ⑱ **🔊 +/- (Volume)**
Increases or decreases volume.
- ⑲ **■ (Stop)**
- Stops play.
 - Press and hold to eject the disc or open the disc compartment.
 - In radio mode, erases the current preset radio station.
- ⑳ **↶ (Back)**
Returns to a previous menu screen.
- ㉑ **Source buttons**
- **DISC / POP-UP MENU**: Switch to disc source. Access the disc menu of a DVD disc or the pop-up menu of a Blu-ray disc.
 - **RADIO** : Switches to FM radio.
 - **AUDIO SOURCE** : Selects an audio input source.

4 Connect your home theater

This section helps you connect your home theater to a TV and other devices. The basic connections of the home theater with its accessories are provided in the Quick Start. For a comprehensive interactive guide, see www.connectivityguide.philips.com.

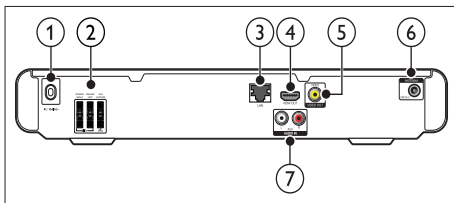
Note

- Refer to the type plate at the back or bottom of the product for identification and supply ratings.
- Before you make or change any connections, ensure that all devices are disconnected from the power outlet.

Connectors

Connect other devices to your home theater:

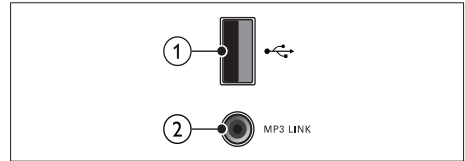
Back connectors



- ① **AC MAINS~**
Connects to the power supply.
- ② **SPEAKERS**
Connects to the supplied speakers and subwoofer.
- ③ **LAN**
Connects to the LAN input on a broadband modem or router.
- ④ **HDMI OUT**
Connects to the HDMI input on the TV.
- ⑤ **VIDEO OUT-VIDEO**
Connects to the composite video input on the TV.

- ⑥ **FM ANTENNA**
Connects the FM antenna for radio reception.
- ⑦ **AUDIO IN**
Connects to the analog audio output on the TV or an analog device.

Side connectors



- ① **USB**
Audio, video or picture input from a USB storage device.
- ② **MP3 LINK**
Audio input from an MP3 player.

Connect to the TV

Connect your home theater directly to a TV through one of the following connectors (from highest to basic quality video):

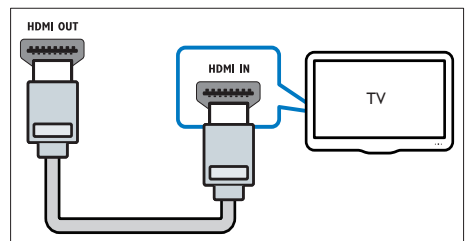
- ① **HDMI**
- ② **Composite video**

Option 1: Connect to the TV through HDMI

Note

- If the HDTV has a DVI connector, connect using an HDMI/DVI adapter.
- If the TV supports EasyLink HDMI CEC, control the home theater and TV with one remote control (see 'Use Philips EasyLink' on page 16).

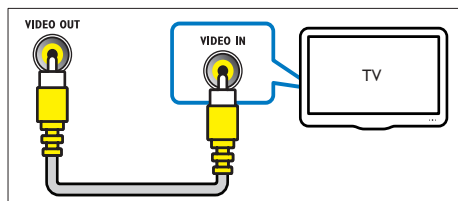
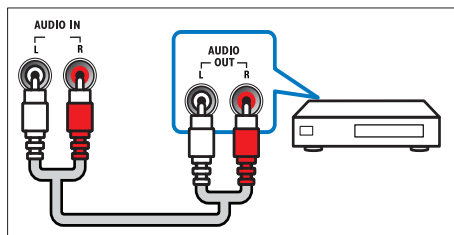
(Cable not supplied)



Option 2: Connect to the TV through composite video (CVBS)

Note

- The composite video cable or connector might be labeled **AV IN**, **VIDEO IN**, **COMPOSITE** or **BASEBAND**.



Connect audio from TV or other devices

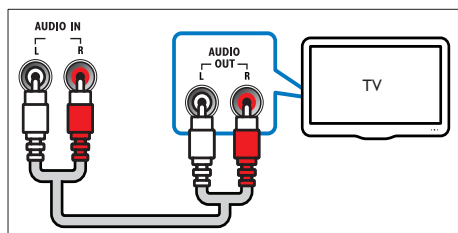
Use your home theater to play audio from the TV or other device such as a cable box.

Tip

- Press **AUDIO SOURCE** to select the audio output of your connection.

Option 1: Connect audio through analog audio cables

(Cable not supplied)



Connect to the internet

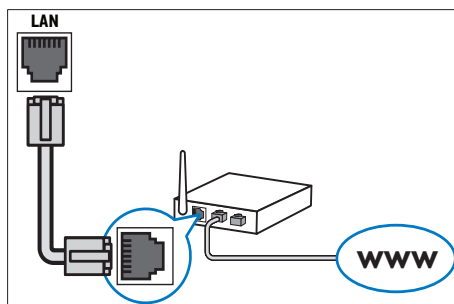
Connect the home theater to the internet network and enjoy:

- BD-Live applications** : access to some exclusive services from the BD-Live enabled Blu-ray discs (see 'Access BD-Live on Blu-ray' on page 12).
- Software update** : update the software of the home theater through the network (see 'Update software from the network' on page 19).

What you need:

- A network router (with DHCP enabled).
- A network cable (RJ45 straight cable).
- For BD-Live application and software update, make sure that the network router has access to the Internet and the firewall is disabled.

(Cable not supplied)



Set up network

- 1 Connect the home theater to a broadband modem or router (see 'Connect to the internet' on page 9).
- 2 Turn on your TV and switch to the correct source for the home theater.
- 3 Press **⬆** (**Home**).
- 4 Select **[Setup]**, then press **OK**.
- 5 Select **[Network]** > **[Network Installation]**, then press **OK**.
- 6 Select **[Wired (Ethernet)]**, then press **OK**.
- 7 Select **[Auto (recommended)]** or **[Manual (advanced)]**, then press **OK**.
- 8 Follow the instructions on the TV to complete the setup.
 - ↳ The home theater connects to the internet. If connection fails, select **[Retry]**, then press **OK**.
- 9 Select **[Finish]**, then press **OK** to exit.

Caution

- Familiarize yourself with the network router, media server software and networking principles before attempting to connect the home theater to a computer network. If necessary, read documentation accompanying network components. Philips is not responsible for lost, damaged or corrupt data.

5 Use your home theater

This section helps you use the home theater to play media from a wide range of sources.

Before you start

Check that you:

- Make the necessary connections and complete the setup as described in the Quick Start.
- Switch the TV to the correct source for the home theater.

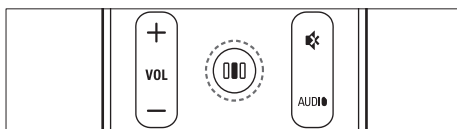
Access the home menu

The home menu gives you easy access to connected devices, audio and video settings, and other features.

- 1 Press **⬆** (**Home**).
 - ↳ The home menu appears.
- 2 Press the **Navigation buttons** and **OK** to select the following:
 - **[play Disc]** : Starts disc play.
 - **[browse USB]** : Accesses the content browser of the connected USB storage device.
 - **[Setup]** : Accesses menus to change picture, sound and other settings.

Choose your sound

This section helps you choose the ideal sound for your video or music.



- 1 Press **⏮** (Sound options).
- 2 Press the **Navigation buttons** (left/right) to access the sound options.

Sound experience	Description
SOUND	Selects a sound mode.
SURROUND	Selects a surround sound or stereo sound.
TREBLE	Adjusts the high frequency output.
MID	Adjusts the middle frequency output.
BASS	Adjusts the low frequency output.
AUDIO SYNC	Delays the audio to match the video.

- 3 Select an option, then press **OK**.

- 4 Press **⏮** (Back) to exit.

If you do not press a button within five seconds, it automatically exits the menu.

Change sound mode

Select predefined sound modes to suit your video or music.

- 1 Press **⏮** (Sound options).
- 2 Select **SOUND**, then press **OK**.
- 3 Press the **Navigation buttons** (up/down) to select the following settings:
 - **ACTION/ROCK** : Enhanced low and high-range. Ideal for action movies and rock or pop music.
 - **DRAMA/JAZZ** : Clear mid and high-range. Ideal for drama movies and jazz music.

- **CONCERT/CLASSIC**: Neutral sound. Ideal for live concerts and classical music.
- **SPORTS** : Moderate mid-range and surround effects for clear vocals and the atmosphere of a live sport venue.

- 4 Press **OK** to confirm your choice.

Change surround sound mode

Experience an immersive audio experience with surround sound modes.

- 1 Press **⏮** (Sound options).
- 2 Select **SURROUND**, then press **OK**.
- 3 Press the **Navigation buttons** (up/down) to select the following settings:
 - **DOLBY VS** : Dolby Virtual Speaker.
 - **STEREO** : Two-channel stereo sound. Ideal for listening to music.
- 4 Press **OK** to confirm your choice.

Change treble, mid and bass

Change the high frequency (treble), mid frequency (mid) and low frequency (bass) settings of the home theater to suit your video or music.

- 1 Press **⏮** (Sound options).
- 2 Select **TREBLE**, **MID** or **BASS**, then press **OK**.
- 3 Press the **Navigation buttons** (up/down) to adjust the frequency level.
- 4 Press **OK** to confirm.

Synchronize audio with video

If the audio and video are not synchronized, you can delay the audio to match the video.

- 1 Press **⏮** (Sound options).
- 2 Select **AUDIO SYNC**, then press **OK**.
- 3 Press the **Navigation buttons** (up/down) to sync the audio with the video.
- 4 Press **OK** to confirm.

Note

- Audio Lip Sync is only available when you play a video.

Play a disc

The home theater can play a wide variety of discs, including video, audio and mixed media (for example, a CD-R that contains JPEG pictures and MP3 music).

- 1 Insert a disc into the home theater.
- 2 Press **DISC**, or select **[play Disc]** in the home menu and press **OK**.
 - ↳ The disc plays or the disc main menu appears.
- 3 Press the following buttons to control play:


Button	Action
Navigation buttons	Navigate menus.
OK	Confirms an entry or selection.
▶(Play)	Starts or resumes play.
⏏	Pauses play.
■	Stops play.
◀ / ▶	Skips to the previous or next track, chapter or file.
◀◀ / ▶▶	Fast backwards or fast forwards. Press repeatedly to change the search speed.
Navigation buttons (up/down)	Rotates the picture counter-clockwise or clockwise.
SUBTITLE	Selects subtitle language for video.
DISC	Accesses or exits the disc menu.
⏏ (Options)	Accesses more play options during playback.

Use Bonus View on Blu-ray

Blu-ray discs that support the Bonus View feature (also known as Picture-In-Picture) allow you to view special content such as a director's commentary while watching the main feature.

- 1 If necessary, enable BonusView (or Picture-In-Picture) in the Blu-ray disc menu.
- 2 During playback of the main feature, press **⏏ (Options)**.
 - ↳ The options menu is displayed.

- 3 Select **[PIP Selection]** > **[PIP]**, then press **OK**.
 - ↳ PIP options **[1]/[2]** depend on the video contents.
 - ↳ The picture-in-picture video appears in a small window.
- 4 Select **[2nd Audio Language]** or **[2nd Subtitle Language]**, then press **OK**.
- 5 Select the language to play, then press **OK**.


 Note

- To turn off the Bonus View (Picture-in-Picture), press **⏏ (Options)**, select **[PIP Selection]** > **[Off]**, then press **OK**.

Access BD-Live on Blu-ray

BD-Live enabled Blu-ray discs include exclusive services such as movies and other online bonuses.

- 1 Prepare the internet connection and set up the network (see 'Connect to the internet' on page 9).
- 2 Connect the USB storage device to the home theater.
- 3 Select the BD-Live icon in the disc menu, then press **OK**.
 - ↳ BD-Live starts to load. The loading time depends on the disc and your internet connection.
- 4 Press the **Navigation buttons** to navigate BD-Live.
- 5 Press **OK** to select an item.

 Note

- The range of BD-Live services depends on the disc.
- When you use BD-Live, data on the disc and home theater are accessed by the content provider.
- Use a USB storage device with at least 1GB of free space to store the downloaded files.
- If there is insufficient memory to download BD-Live content, clear memory space.

Play 3D video

Your home theater can play 3D videos on 3D TVs.

Before you start, make sure that:

- your TV is a 3D TV, and is connected to your home theater through HDMI,
- your disc is a Blu-ray 3D disc, and
- you have 3D glasses that are compatible with your 3D TV.

- 1 Insert a Blu-ray 3D disc into your home theater.
↳ YourTV switches to the correct HDMI source, and the disc plays automatically.
- 2 If the disc does not play automatically, press **DISC** or select **[play Disc]** in the home menu, and then press **OK**.
- 3 Press the play buttons to control play.
When you search forward or backward, and in some other play modes, the video displays in 2D. It returns to 3D when you play normally again.
- 4 Put on the 3D glasses to enjoy the 3D effects.

Play 3D discs in 2D

- 1 Press **▲ (Home)**.
- 2 Select **[Setup] > [Video] > [Blu-ray 3D video] > [Off]**.
- 3 Press **OK**.
- 4 Play your Blu-ray 3D disc.
↳ The 3D video is displayed in 2D.

Play from a USB storage device

The home theater is fitted with a USB connector that allows you to view pictures, listen to music or watch movies stored on a USB storage device.

- 1 Connect the USB storage device to the home theater.
- 2 Press **▲ (Home)**.
↳ The home menu appears.
- 3 Select **[browse USB]**, then press **OK**.
↳ A content browser appears.
- 4 Select a file, then press **OK**.
- 5 Press the playback buttons to control play (see 'Play a disc' on page 12).



Note

- If the USB storage device does not fit into the connector, use a USB extension cable.
- The home theater does not support digital cameras that need a computer program to display photos.
- The USB storage device must be Mass Storage Class compliant, and formatted to FAT, DOS or NTFS file system.

More play features for disc or USB

Several advanced features are available for video or picture playback from a disc or USB storage device.

Use video options

Access several useful features while viewing video.



Note

- Available video options depend on the video source.

- 1 Press (**Options**).
↳ The video options menu appears.
- 2 Press the **Navigation buttons** and **OK** to select and adjust:
 - **[Audio Language]** : Selects audio language for video.
 - **[Subtitle Language]** : Selects subtitle language for video.
 - **[Subtitle Shift]** : Adjusts the subtitle position on the screen.
 - **[Info]** : Displays information about what is playing.
 - **[Character Set]** : Selects a character set that supports the DivX subtitle.
 - **[Time Search]** : Skips to a specific part of the video by entering the time of the scene.
 - **[2nd Audio Language]** : Selects the second audio language to play.
 - **[2nd Subtitle Language]** : Selects the second subtitle language to play.
 - **[Titles]** : Selects a specific title.
 - **[Chapters]** : Selects a specific chapter.
 - **[Angle List]** : Selects a different camera angle.
 - **[Menus]** : Displays the disc menu.
 - **[PIP Selection]** : Displays Picture-in-Picture window.
 - **[Zoom]** : Zooms into a video scene or picture. Press the **Navigation buttons** (left/right) to select a zoom factor.

- **[Repeat]** : Repeats a chapter or title.
- **[Repeat A-B]** : Marks two points within a chapter or track for repeat play, or turns off repeat mode.
- **[Picture Settings]** : Selects a predefined color setting.

Use picture options

Access several useful features while viewing pictures.

- 1 Press (**Options**).
↳ The pictures options menu appears.
- 2 Press the **Navigation buttons** and **OK** to select and adjust:
 - **[Rotate +90]** : Rotates the picture 90 degree clockwise.
 - **[Rotate -90]** : Rotates the picture 90 degree counter-clockwise.
 - **[Zoom]** : Zooms into a video scene or picture. Press the **Navigation buttons** (left/right) to select a zoom factor.
 - **[Info]** : Displays picture information.
 - **[Duration per slide]** : Sets the display speed for each picture in a slide show.
 - **[Slide Animation]** : Selects animation for the slide show.
 - **[Picture Settings]** : Selects a predefined color setting.
 - **[Repeat]** : Repeats a selected folder.

Use audio options

Access several useful features while audio is played.

- 1 Press (**Options**) repeatedly to cycle through the following functions:
 - **REPEAT TRACK** : Repeats the current track.
 - **REPEAT DISC** : Repeats all the tracks on the disc or folder.
 - **REPEAT RANDOM** : Plays audio tracks in random order.
 - **REPEAT OFF** : Turns off repeat mode.

Play a musical slideshow

Play music and pictures simultaneously to create a musical slideshow.

- 1 Select a music track, then press **OK**.
- 2 Press **⏮ (Back)** and go to the picture folder.
- 3 Select a picture, then press **OK** to start slideshow.
- 4 Press **■** to stop slideshow.
- 5 Press **■** again to stop music.

Play from radio

The home theater can store up to 40 radio stations.

- 1 Check that the FM antenna is connected.
- 2 Press **RADIO**.
 - ↳ “**AUTO INSTALL...PRESS PLAY**” appears on the display panel if you have not installed any radio stations. Press **▶ (Play)**.
- 3 Press the following buttons to control play:

Button	Action
◀ / ▶	Selects a preset radio station.
Navigation buttons (left/right)	Searches for a radio station.
Navigation buttons (up/down)	Fine tunes a radio frequency.
■	Press and hold to erase the preset radio station. Press to stop the installation of radio stations.
⏻ (Options)	Manual: Press once to access program mode, and press again to store the radio station. Automatic: Press and hold for five seconds to reinstall radio stations.
AUDIO	Toggles between stereo and mono sound.

Note

- AM and digital radio are not supported.
- If no stereo signal is detected, you are prompted to install the radio stations again.
- For the best reception, place the antenna away from the TV or other sources of radiation.

Play audio from TV or other devices

Press **AUDIO SOURCE** repeatedly to select the audio output of the connected device (see ‘Connect audio from TV or other devices’ on page 9).

Play from an MP3 player

Connect and play audio files from an MP3 player or other external audio devices.


- 1 Connect the MP3 player to the home theater as described in the Quick start guide.
- 2 Press **AUDIO SOURCE** repeatedly until ‘**MP3 LINK**’ appears on the display panel.
- 3 Press the buttons on the MP3 player to select and play audio files.

Use Philips EasyLink

The home theater supports Philips EasyLink, which uses the HDMI CEC (Consumer Electronics Control) protocol. EasyLink-compliant devices that are connected through HDMI connectors can be controlled by a single remote control.

Note

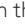
- Philips does not guarantee 100% interoperability with all HDMI CEC devices.

- 1 Switch on the HDMI CEC operations on the TV and other connected devices. See the manual of the TV or other devices for details.
- 2 Press  (Home).
- 3 Select **[Setup]**, then press **OK**.
- 4 Select **[EasyLink]** > **[EasyLink]**, then press **OK**.
- 5 Select **[On]**, then press **OK**.
- 6 You can now enjoy the following Philips EasyLink controls.

One-touch play

When you play a disc, the TV automatically switches to the correct channel.

One-touch standby

When you press and hold  (Standby) on the remote control, the home theater and all the connected HDMI CEC devices (if they support one-touch standby) switch to standby mode simultaneously.

System Audio Control

When you play a device that has its audio output routed to the home theater, the home theater switches to the corresponding audio source automatically.
To use one-touch audio, enable this feature and follow the instructions on the TV to map the connected devices correctly to the audio input jacks of the home theater.

Audio Input Mapping

Updates audio input mapping if there are new devices connected.



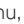
6 Change settings

This section helps you to change the settings of your home theater.

Caution

- Most of the settings are already configured with the best value for the home theater. Unless you have a specific reason to change a setting, it is best to leave it at the default value.


Access the setup menu

- 1 Press  (Home).
- 2 Select **[Setup]**, then press **OK**.
↳ The setup menu appears.
- 3 Select a setup menu, then press **OK**.
See the following sections for information about how to change the settings of your home theater.
- 4 Press  (Back) to return to the previous menu, or press  to exit.

Note

- You cannot change a setting that is grayed out.

Change video settings

- 1 Press  (Home).
- 2 Select **[Setup]**, then press **OK**.
- 3 Select **[Video]**, then press **OK**.
- 4 Select and adjust the following settings:
 - **[TV Display]** : Selects a picture display format to fit the TV screen.
 - **[HDMI Video]** : Selects the HDMI video resolution.
 - **[HDMI Deep Color]** : Displays colors with more shades and hues when the video content is recorded in Deep Color and the TV supports this feature.

- **[Blu-ray 3D video]** : Selects the 3-dimensional video output when you play a 3D video on your home theater. The home theater must be connected to a 3D TV through HDMI.
- **[Picture Settings]** : Selects a predefined color setting.

5 Press **OK** to confirm your choice.

Note

- The best setting is automatically selected for the TV. If you need to change the setting, ensure that the TV supports the new setting.
- For settings related to HDMI, the TV must be connected through HDMI.

Change audio settings

- 1 Press **⬆** (Home).
- 2 Select **[Setup]**, then press **OK**.
- 3 Select **[Audio]**, then press **OK**.
- 4 Select and adjust the following settings:
 - **[Night Mode]** : Selects quiet or full dynamic sound. Night mode decreases the volume of loud sounds and increases the volume of soft sounds such as speech.
 - **[HDMI Audio]** : Selects HDMI audio format or disables HDMI audio output for the TV.
- 5 Press **OK** to confirm your choice.

Note

- For settings related to HDMI, the TV must be connected through HDMI.
- Night mode is available for Dolby encoded DVD and Blu-ray discs (for models support Blu-ray playback).

Set up network

- 1 Press **⬆** (Home).
- 2 Select **[Setup]**, then press **OK**.
- 3 Select **[Network]**, then press **OK**.
- 4 Select and adjust the following settings:
 - **[Network Installation]** : Starts wired (Ethernet) setup. Follow the instructions to set up the network connection.
 - **[View Network Settings]** : Displays the current network settings.
- 5 Press **OK** to confirm your choice.

Set up EasyLink

- 1 Press **⬆** (Home).
- 2 Select **[Setup]**, then press **OK**.
- 3 Select **[EasyLink]**, then press **OK**.
- 4 Select and adjust the following settings:
 - **[EasyLink]** : Enables or disables EasyLink.
 - **[One Touch Play]** : Enables or disables One Touch Play.
If enabled, you can use the remote control to start disc play in the home theater and the TV switches automatically to the correct channel.
 - **[One Touch Standby]** : Enables or disables One Touch Standby.
If enabled, the home theater can be switched off to standby by a remote control from the TV or other connected HDMI CEC devices.
 - **[System Audio Control]** : Enables or disables System audio control.
If enabled, follow the instructions on the TV to map the connected devices correctly to the audio connectors of the home theater. The home theater switches automatically to the audio source of the connected device.
 - **[Audio Input Mapping]** : Updates audio input mapping if there are new devices connected.
- 5 Press **OK** to confirm your choice.

Note

- The connected devices must be connected through HDMI and switched on.

Change preference settings

- 1 Press **⬆** (Home).
- 2 Select **[Setup]**, then press **OK**.
- 3 Select **[Preference]**, then press **OK**.
- 4 Select and adjust the following settings:
 - **[Menu language]** : Selects the on-screen display menu language.
 - **[Audio]** : Selects audio language for video.
 - **[Subtitle]** : Selects subtitle language for video.
 - **[Disc Menu]** : Selects menu language for video disc.
 - **[Parental Control]** : Restricts access to discs that are recorded with ratings. To play all discs irrespective of the rating, select level '8'.
 - **[Screen Saver]** : Enables or disables screen saver mode. If enabled, the screen enters idle mode after 10 minutes of inactivity (for example, in pause or stop mode).
 - **[Auto Subtitle Shift]** : Enables or disables shift subtitle. If enabled, it adjusts the subtitle position automatically to fit the TV screen.
 - **[Change Password]** : Sets or changes a PIN code to play a restricted disc. Enter '0000' if you do not have a PIN or if you have forgotten your PIN.
 - **[Display Panel]** : Changes the brightness of the display panel.
 - **[Auto Standby]** : Enables or disables auto standby. If enabled, the home theater switches to standby after 30 minutes of inactivity (for example, in pause or stop mode).
 - **[VCD PBC]** : Displays or skips the content menu for VCD and SVCD discs.
 - **[Sleep Timer]** : Sets a sleep timer to switch the home theater to standby after a specific time.
- 5 Press **OK** to confirm your choice.



Note

- If your preferred disc language is not available, you can select **[Other]** from the list and enter the 4-digit language code which can be found at the back of this manual.
- If you select a language that is not available on a disc, the home theater uses the default language of the disc.

Change advanced settings

- 1 Press **⬆** (Home).
- 2 Select **[Setup]**, then press **OK**.
- 3 Select **[Advanced]**, then press **OK**.
- 4 Select and adjust the following settings:
 - **[BD-Live Security]** : Restricts or allows access to BD-Live.
 - **[Enhanced Audio]** : Enables or disables the audio post processing at the speaker output.
 - **[Software Update]** : Selects to update software from the network or from USB storage device.
 - **[Clear memory]** : Clears local memory, delete the BD-Live files that you previously downloaded. If using an USB storage device, the local storage folder is 'BUDA'.
 - **[DivX® VOD Code]** : Displays the DivX VOD registration code for the home theater.
 - **[Version Info.]** : Displays the software version for the home theater.
 - **[Restore default settings]** : Resets the home theater to the default settings programmed at the factory.
- 5 Press **OK** to confirm your choice.



Note

- You cannot restrict internet access on commercial Blu-ray discs.
- Before you purchase DivX videos and play them on the home theater, register the home theater on www.divx.com using the DivX VOD code.
- You cannot reset parental control setting to its default value.

7 Update software

To check for new updates, compare the current software version of your home theater with the latest software version (if available) on the Philips web site.

Check software version

- 1 Press **⬆** (Home).
- 2 Select **[Setup]**, then press **OK**.
- 3 Select **[Advanced]** > **[Version Info.]**, then press **OK**.
 - ↳ The software version is displayed.

Update software from the network

- 1 Prepare the internet connection (see 'Connect to the internet' on page 9).
- 2 Press **⬆** (Home) and select **[Setup]**.
- 3 Select **[Advanced]** > **[Software Update]** > **[Network]**.
 - ↳ If an upgrade media is detected, you are prompted to start or cancel the update.
- 4 Follow the instruction on the TV to confirm the update.
 - ↳ When complete, the home theater automatically switches off and on again.
 - If not, disconnect the power cord for a few seconds and then reconnect it.



Note

- If the home theater is unable to connect to the Philips server, press **⬆** (Home), select **[Setup]** > **[Network]** > **[Network Installation]** to set up the network.

Update software from a USB

- 1 Check for the latest software version on www.philips.com/support.
 - Search for your model and click on 'software and drivers'.
- 2 Create a folder named 'UPG' in the root directory of your USB storage device.
- 3 Download the software into the 'UPG' folder of the USB storage device.
- 4 Unzip the software in the 'UPG' folder.
- 5 Connect the USB storage device to the home theater.
- 6 Press **⬆** (Home) and select **[Setup]**.
- 7 Select **[Advanced]** > **[Software Update]** > **[USB]**.
- 8 Follow the instructions on the TV to confirm the update.
 - ↳ When complete, the home theater automatically switches off and restarts.
 - If not, disconnect the power cord for a few seconds and then reconnect it.



Caution

- Do not turn off the power or remove the USB storage device when the software update is in progress because you might damage the home theater.

8 Product specifications

Note

- Specification and design are subject to change without notice.

Region code

The type plate on the back or bottom of the home theater shows which regions it supports

Country	DVD	BD
Europe, United Kingdom	 	
Asia Pacific, Taiwan, Korea	 	
Latin America	 	
Australia, New Zealand	 	
Russia, India	 	
China	 	

Playback media

- BD-Video, DVD-Video, DVD+R/+RW, DVD-R/-RW, DVD+R/-R DL, CD-R/CD-RW, Audio CD, Video CD/SVCD, Picture CD, MP3-CD, WMA-CD, DivX (Ultra)-CD, USB flash drive.

File Format

- Audio: .mp3, .wma
- Video: .avi, .divx, .mkv, .wmv
- Picture: .jpg, .gif, .png

Amplifier

- Total output power: 300 W RMS (30% THD)
- Frequency response: 20 Hz-20 kHz / ± 3 dB
- Signal-to-noise ratio: > 65 dB (CCIR) / (A-weighted)
- Input sensitivity:
 - AUX: 1000 mV
 - MP3 LINK: 500 mV

Video

- Signal system: PAL / NTSC
- HDMI output: 480i/576i, 480p/576p, 720p, 1080i, 1080p

Audio

- Sampling frequency:
 - MP3: 32 kHz, 44.1 kHz, 48 kHz
 - WMA: 44.1 kHz, 48 kHz
- Constant bit rate:
 - MP3: 112 kbps - 320 kbps
 - WMA: 48 kbps - 192 kbps

Radio

- Tuning range: FM 87.5-108 MHz (50 kHz)
- Signal-to-noise ratio: FM 55 dB
- Frequency response: FM 180 Hz-12.5 kHz / ± 3 dB

USB

- Compatibility: Hi-Speed USB (2.0)
- Class support: UMS (USB Mass Storage Class)
- File system: FAT16, FAT32, NTFS
- Maximum memory support: < 160GB

Main Unit

- Power supply: 220-240V; ~50 Hz
- Power consumption: 55 W
- Standby power consumption: ≤ 0.9 W
- Dimensions (WxHxD): 360 x 58 x 351 (mm)
- Weight: 3.1 kg

Subwoofer

- Impedance: 4 ohm
- Speaker drivers: 165 mm (6.5") woofer
- Frequency response: 20 Hz-150 Hz
- Dimensions (WxHxD): 123 x 309 x 369 (mm)
- Weight: 3.56 kg
- Cable length: 4 m

Speakers

- Speaker impedance: 8 ohm
- Speaker drivers: 1 x 3" full range
- Frequency response: 150 Hz-20 kHz
- Dimensions (WxHxD): 95 x 161 x 87 (mm)
- Weight: 0.56 Kg
- Cable length: 3 m

Laser Specification

- Laser Type (Diode): InGaN/AlGaIn (BD), InGaAlP (DVD), AlGaAs (CD)
- Wave length: 405 +5nm/-5nm (BD), 650 +13nm/-10nm (DVD), 790 +15nm/-15nm (CD)
- Output power (Max. ratings): 20mW (BD), 7mW (DVD/CD)

9 Troubleshooting



Warning

- Risk of electric shock. Never remove the casing of the product.

To keep the warranty valid, never try to repair the product yourself.

If you have problems using this product, check the following points before you request service. If you still have a problem, register your product and get support at www.philips.com/welcome.

If you contact Philips, you will be asked for the model and serial number of your product. The model number and serial number are on the back or bottom of your product. Write the numbers here:

Model No. _____

Serial No. _____

Main unit

The buttons on this home theater do not work.

- Disconnect the home theater from the power outlet for a few minutes, then reconnect.

Picture

No picture.

- Ensure that the TV is switched to the correct source for the home theater.

No picture on HDMI connection.

- Change the HDMI video setting or wait for 15 seconds for auto recover.
- Check if the HDMI cable is faulty. Replace with a new HDMI cable.

No high-definition video signal on the TV.

- Ensure that the disc contains high-definition video.
- Ensure that the TV supports high-definition video.

Sound

No sound.

- Ensure that the audio cables are connected and select the correct input source (for example, **AUDIO SOURCE**) for the device you want to play.

No sound on HDMI connection.

- You might not hear any sound if the connected device is not HDCP (High-bandwidth Digital Content Protection) compliant or only DVI compatible. Use an analog or digital audio connection.
- Ensure that the **[HDMI Audio]** is enabled.

No sound from TV program.

- Connect an audio cable from the audio input on the home theater to the audio output on the TV, then press **AUDIO SOURCE** repeatedly to select the correct audio source.

Distorted sound or echo.

- Ensure that the TV volume is muted or set to minimum if you are playing audio through the home theater.

Audio and video are not synchronized.

- 1) Press **[Sound options]**. 2) Press the **Navigation buttons** (left/right) repeatedly until **AUDIO SYNC** is displayed, then press **OK**. 3) Press the **Navigation buttons** (up/down) to sync the audio with the video.

Play

Disc cannot be played.

- Clean the disc.
- Ensure that the home theater supports the disc (see 'Product specifications' on page 20).
- Ensure that the home theater supports the region code of the disc.
- For DVD±RW or DVD±R, ensure that the disc is finalized.

DivX video files cannot be played.

- Ensure that the DivX file is encoded according to the 'Home Theater Profile' with the DivX encoder.
- Ensure that the DivX video file is complete.

DivX subtitles do not display correctly.

- Ensure that the subtitle file name is the same as the movie file name.
- Select the correct character set: 1) Press **[Options]**. 2) Select **[Character Set]**. 3) Select the supported character set. 4) Press **OK**.

The contents of a USB storage device cannot be read.

- Ensure that the format of the USB storage device is compatible with the home theater (see 'Product specifications' on page 20).
- Ensure that the USB storage device is formatted with a file system that is supported by the home theater.

'No entry' or 'x' sign appears on the TV.

- The operation is not possible.

EasyLink feature does not work.

- Ensure that the home theater is connected to a Philips brand EasyLink TV and that EasyLink is on.

I do not want my home theater to be switched on when I switch on my TV.

- This is the correct behavior for Philips EasyLink (HDMI-CEC). To make the home theater work independently, switch off EasyLink.

I cannot access BD-Live features.

- Check the network connection or ensure that the network has been set up (see 'Set up network' on page 10).
- Clear memory storage. (see 'Change advanced settings' on page 18)
- Ensure that the Blu-ray disc supports BD-Live feature.

My 3D video plays in 2D mode.

- Ensure that your home theater is connected to your 3D TV through HDMI.
- Ensure that your disc is a Blu-ray 3D disc.
- Ensure that the **[Blu-ray 3D video]** setting is turned on.

I see black video on my TV screen.

- Ensure that your home theater is connected to the TV through HDMI.
- Switch to the correct HDMI source on your TV.

10 Index

3

3D video	13
----------	----

A

amplifier	20
audio	
connection	9
language	18
synchronize with video	11
audio input mapping	16, 17

B

BD-Live	
access	12
set up	10
Bonus View	12

C

care	4
change settings	16
chapter	14
connect	
audio from TV	9, 15
guide	8
other devices	9
TV	8
connectors	8
contact us	21

D

disc	
play	12
supported discs	20
disposal of your product	5
DivX	
character set	14

E

EasyLink	
settings	16, 17

F

file formats	20
--------------	----

H		
HDMI CEC (see Easylink)	16	
I		
Internet		
BD-Live	12	
L		
language		
audio	14, 18	
disc menu	18	
on-screen display	18	
subtitle	14, 18	
M		
MP3		
play	15	
N		
network		
set up	10	
O		
one-touch play	16, 17	
one-touch standby	16, 17	
overview		
connectors	8	
main unit	6	
remote control	6	
P		
password (PIN code)	18	
picture		
options	14	
rotate	14	
slide show	15, 14	
troubleshooting	21	
picture-in-picture		
2nd audio language	12	
2nd subtitle language	12	
enable	12	
play		
2D video	13	
3D video	13	
disc	12	
MP3 player	15	
options	12	
radio	15	
troubleshooting	21	
USB storage device	13	
product care	4	
product specifications	20	
R		
radio		
play	15	
program	15	
tune	15	
recycle	5	
region code	20	
remote control	6	
repeat	14, 12	
rotate pictures	14	
S		
safety	4	
settings		
EasyLink	17	
parental control	18	
preferences	18	
slideshow		
animation	14	
duration	14	
play musical slideshow	15	
software		
update	19	
version	19	
sound		
mode	11	
surround	11	
treble and bass	11	
troubleshooting	21	
subtitle		
language	14, 18	
subtitle shift	14, 18	
system audio control	16	
T		
time search video	14	
title	14	
troubleshooting	21	
TV		
audio from TV	9, 15	
connect	8	

U

USB

play	13
software update	19

V

video

options	14
synchronize with audio	11