

Register your product and get support at
www.philips.com/welcome

HTS3541



User manual

Manual del usuario

Manual do Usuário

PHILIPS

Contents

| | | |
|----------|---|-----------|
| 1 | Important | 2 |
| | Safety | 2 |
| | Care for your product | 3 |
| | Care of the environment | 3 |
| | Help and support | 3 |
| 2 | Your home theater | 4 |
| | Main unit | 4 |
| | Connectors | 4 |
| | Remote control | 5 |
| 3 | Connect and set up | 6 |
| | Connect speakers | 6 |
| | Connect to TV | 7 |
| | Connect audio from TV and other devices | 8 |
| | Set up speakers | 9 |
| | Set up EasyLink (HDMI-CEC control) | 9 |
| | Connect and set up a home network | 10 |
| 4 | Use your home theater | 11 |
| | Access the home menu | 11 |
| | Discs | 11 |
| | Data files | 12 |
| | USB storage devices | 13 |
| | Audio, video, and picture options | 13 |
| | Radio | 14 |
| | MP3 player | 15 |
| | YouTube videos | 15 |
| | Picasa web albums | 15 |
| | Choose sound | 16 |

| | | |
|----------|----------------------------|-----------|
| 5 | Change settings | 17 |
| | Language settings | 17 |
| | Picture and video settings | 17 |
| | Audio settings | 17 |
| | Parental control settings | 17 |
| | Display settings | 18 |
| | Energy saving settings | 18 |
| | Speaker settings | 18 |
| | Restore default settings | 18 |

| | | |
|----------|--------------------------------------|-----------|
| 6 | Update software | 19 |
| | Check software version | 19 |
| | Update software through USB | 19 |
| | Update software through the Internet | 19 |

| | | |
|----------|-------------------------------|-----------|
| 7 | Product specifications | 20 |
|----------|-------------------------------|-----------|

| | | |
|----------|------------------------|-----------|
| 8 | Troubleshooting | 22 |
|----------|------------------------|-----------|

| | | |
|----------|----------------------|-----------|
| 9 | Notice | 24 |
| | Copyright | 24 |
| | Compliance | 24 |
| | Open source software | 24 |
| | Trademarks | 24 |

| | | |
|-----------|--------------|-----------|
| 10 | Index | 25 |
|-----------|--------------|-----------|

1 Important

Read and understand all instructions before you use your product. If damage is caused by failure to follow instructions, the warranty does not apply.

Safety

Risk of electric shock or fire!

- Never expose the product and accessories to rain or water. Never place liquid containers, such as vases, near the product. If liquids are spilt on or into the product, disconnect it from the power outlet immediately. Contact Philips Consumer Care to have the product checked before use.
- Never place the product and accessories near naked flames or other heat sources, including direct sunlight.
- Never insert objects into the ventilation slots or other openings on the product.
- Where the mains plug or an appliance coupler is used as the disconnect device, the disconnect device shall remain readily operable.
- Disconnect the product from the power outlet before lightning storms.
- When you disconnect the power cord, always pull the plug, never the cable.

Risk of short circuit or fire!

- Before you connect the product to the power outlet, ensure that the power voltage matches the value printed on the back or bottom of the product. Never connect the product to the power outlet if the voltage is different.

Risk of injury or damage to the home theater!

- For wall-mountable products, use only the supplied wall mount bracket. Secure the wall mount to a wall that can support the combined weight of the product and the wall mount. Koninklijke Philips Electronics N.V. bears no responsibility for improper wall mounting that results in accident, injury or damage.
- For speakers with stands, use only the supplied stands. Secure the stands to the speakers tightly. Place the assembled stands on flat, level surfaces that can support the combined weight of the speaker and stand.

- Never place the product or any objects on power cords or on other electrical equipment.
- If the product is transported in temperatures below 5°C, unpack the product and wait until its temperature matches room temperature before connecting it to the power outlet.
- Visible and invisible laser radiation when open. Avoid exposure to beam.
- Do not touch the disc optical lens inside the disc compartment.
- Parts of this product can be made of glass. Handle with care to avoid injury and damage.

Risk of overheating!

- Never install this product in a confined space. Always leave a space of at least four inches around the product for ventilation. Ensure curtains or other objects never cover the ventilation slots on the product.

Risk of contamination!

- Do not mix batteries (old and new or carbon and alkaline, etc.).
- Danger of explosion if batteries are incorrectly replaced. Replace only with the same or equivalent type.
- Remove batteries if they are exhausted or if the remote control is not to be used for a long time.
- Batteries contain chemical substances, they should be disposed of properly.

Risk of swallowing batteries!

- The product/remote control may contain a coin/button type battery, which can be swallowed. Keep the battery out of reach of children at all times! If swallowed, the battery can cause serious injury or death. Severe internal burns can occur within two hours of ingestion.
- If you suspect that a battery has been swallowed or placed inside any part of the body, seek immediate medical attention.
- When you change the batteries, always keep all new and used batteries out of reach of children. Ensure that the battery compartment is completely secure after you replace the battery.
- If the battery compartment cannot be completely secured, discontinue use of the product. Keep out of reach of children and contact the manufacturer.

Care for your product

- Do not insert any objects other than discs into the disc compartment.
- Do not insert warped or cracked discs into the disc compartment.
- Remove discs from the disc compartment if you are not using the product for an extended period of time.
- Use only microfiber cloth to clean the product.

Care of the environment



Your product is designed and manufactured with high quality materials and components, which can be recycled and reused.



When this crossed-out wheeled bin symbol is attached to a product it means that the product is covered by the European Directive 2002/96/EC. Please inform yourself about the local separate collection system for electrical and electronic products.

Please act according to your local rules and do not dispose of your old products with your normal household waste.

Correct disposal of your old product helps to prevent potential negative consequences for the environment and human health.



Your product contains batteries covered by the European Directive 2006/66/EC, which cannot be disposed with normal household waste.

Please inform yourself about the local rules on separate collection of batteries because correct disposal helps to prevent negative consequences for the environmental and human health.

Help and support

Philips provides extensive online support. Visit our website at www.philips.com/support to:

- download the complete user manual
- print the quick start guide
- watch video tutorials (available only for selected models)
- find answers to frequently answered questions (FAQs)
- email us a question
- chat with our support representative.

Follow the instructions on the website to select your language, and then enter your product model number.

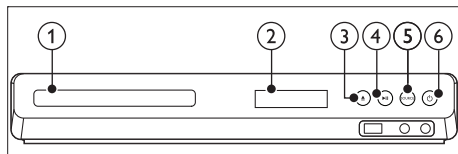
Alternatively, you can contact Philips Consumer Care in your country. Before you contact Philips, note down the model number and serial number of your product. You can find this information on the back or bottom of your product.

2 Your home theater

Congratulations on your purchase, and welcome to Philips! To fully benefit from the support that Philips offers, register your product at www.philips.com/welcome.

Main unit

This section includes an overview of the main unit.

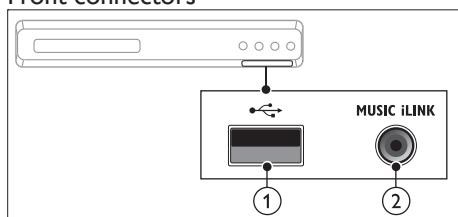


- ① **Disc compartment**
- ② **Display panel**
- ③ **▲ (Open/Close)**
Open or close the disc compartment, or eject the disc.
- ④ **▶|| (Play/Pause)**
Start, pause or resume play.
- ⑤ **SOURCE**
Select an audio or video source for the home theater.
- ⑥ **⏻ (Standby-On)**
Switch the home theater on or to standby.

Connectors

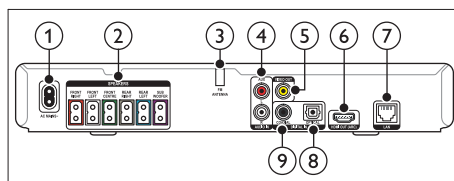
This section includes an overview of the connectors available on your home theater.

Front connectors



- ① **USB**
Audio, video or picture input from a USB storage device.
- ② **MUSIC iLINK**
Audio input from an MP3 player.

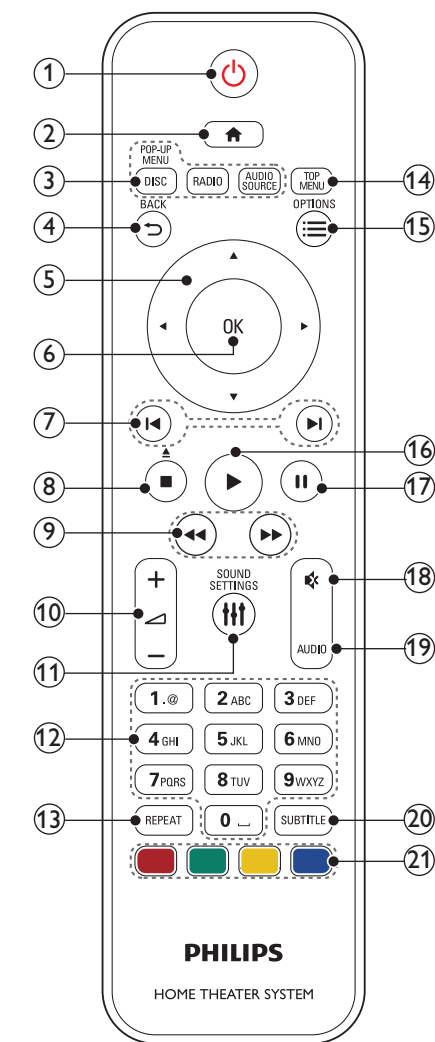
Rear connectors



- ① **AC MAINS**
Connect to the power supply.
- ② **SPEAKERS**
Connect to the supplied speakers and subwoofer.
- ③ **ANTENNA FM**
Fixed FM antenna.
- ④ **AUDIO IN-AUX**
Connect to an analog audio output on the TV or an analog device.
- ⑤ **VIDEO OUT**
Connect to the composite video input on the TV.
- ⑥ **HDMI OUT (ARC)**
Connect to the HDMI input on the TV.
- ⑦ **LAN**
Connect to the LAN input on a broadband modem or router.
- ⑧ **DIGITAL IN-OPTICAL**
Connect to an optical audio output on the TV or a digital device.
- ⑨ **DIGITAL IN-COAXIAL**
Connect to a coaxial audio output on the TV or a digital device.

Remote control

This section includes an overview of the remote control.



1 ⏻ (Standby-On)

- Switch the home theater on or to standby.
- When EasyLink is enabled, press and hold for at least three seconds to switch all connected HDMI CEC compliant devices to standby.

2 🏠 (Home)

Access the home menu.

3 Source buttons

- **DISC/POP-UP MENU** : Switch to disc source. Access or exit the disc menu when you play a disc.
- **RADIO** : Switch to FM radio.
- **AUDIO SOURCE** : Select an audio input source.

4 ↶ BACK

- Return to a previous menu screen.
- In radio mode, press and hold to erase the current preset radio stations.

5 Navigation buttons

- Navigate menus.
- In radio mode, press left or right to start auto search.
- In radio mode, press up or down to tune the radio frequency.

6 OK

Confirm an entry or selection.

7 ◀ / ▶ (Previous/Next)

- Skip to the previous or next track, chapter or file.
- In radio mode, select a preset radio station.

8 ■ (Stop) / ▲ (Eject/Open/Close)

- Stop play.
- Press and hold for three seconds to open or close the disc compartment, or eject the disc.

9 ◀◀ / ▶▶ (Fast Backward / Fast Forward)

Search backwards or forward. Press repeatedly to change the search speed.

10 ◀ +/- (Volume)

Increase or decrease volume.

11 🔊 SOUND SETTINGS

Access or exit sound options.

12 Alphanumeric buttons

Enter values or letters (using SMS style entry).

13 REPEAT

Select or turn off repeat mode.

14 TOP MENU

Access the main menu of a disc.

15 ≡ OPTIONS

- Access more play options while playing a disc or a USB storage device.
- In radio mode, set a radio station.

- ⑩ **▶ (Play)**
Start or resume play.
- ⑪ **⏸ (Pause)**
Pause play.
- ⑫ **🔇 (Mute)**
Mute or restore volume.
- ⑬ **AUDIO**
Select an audio language or channel.
- ⑭ **SUBTITLE**
Select subtitle language for video.
- ⑮ **Color buttons**
Select tasks or options for Blu-ray discs.

3 Connect and set up

This section helps you connect your home theater to a TV and other devices, and then set it up.

For information about the basic connections of your home theater and accessories, see the quick start guide. For a comprehensive interactive guide, visit www.connectivityguide.philips.com.



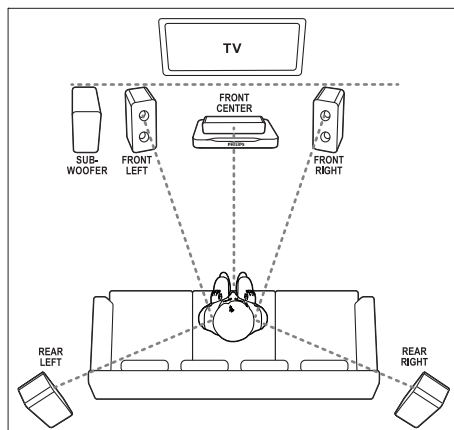
Note

- For identification and supply ratings, see the type plate at the back or bottom of the product.
- Before you make or change any connections, make sure that all devices are disconnected from the power outlet.

Connect speakers

The speaker cables are color-coded for easy connection. To connect a speaker to your home theater, match the color on the speaker cable to the color on the connector:

Speaker position plays a critical role in setting up a surround sound effect. For best effect, position all the speakers towards the seating position and place them close to your ear level (seated).



Note

- Surround sound depends on factors such as room shape and size, type of wall and ceiling, windows and reflective surfaces, and speaker acoustics. Experiment with the speaker positions to find the optimum setting for you.

Follow these general guidelines for speakers placement.

- Seating position:**
This is the center of your listening area.
- FRONT CENTER** (front center) speaker:
Place the center speaker directly in front of the seating position, either above or below your TV.
- FRONT LEFT** (front left) and **FRONT RIGHT** (front right) speakers:
Place the left and right speakers in the front, and at equal distance from the center speaker. Make sure that the left, right, and the center speakers are at equal distance from your seating position.
- REAR LEFT** (rear left) and **REAR RIGHT** (rear right) speakers:
Place the rear surround speakers to the left and right side of your seating position, either in line with it or slightly behind it.
- SUBWOOFER** (subwoofer):
Place the subwoofer at least one meter to the left or right of the TV. Leave about 10-centimeter clearance from the wall.

Connect to TV

Connect your home theater to a TV to watch videos. You can listen to the TV audio through your home theater speakers.

Use the best quality connection available on your home theater and TV.

Option 1: Connect to TV through HDMI (ARC)

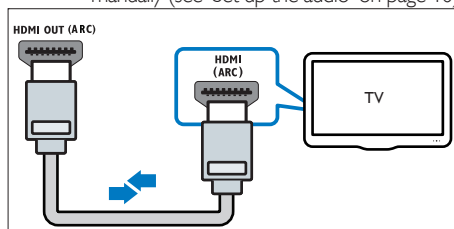
Best quality video

Your home theater supports HDMI version 1.4 - Audio Return Channel (ARC). If your TV is HDMI ARC compliant, you can hear the TV audio through your home theater by using a single HDMI cable.

- Using a High Speed HDMI cable, connect the **HDMI OUT (ARC)** connector on your home theater to the **HDMI ARC** connector on the TV.

- The **HDMI ARC** connector on the TV might be labeled differently. For details, see the TV user manual.

- On your TV, turn on HDMI-CEC operations. For details, see the TV user manual.
 - If you cannot hear the TV audio through your home theater, set up the audio manually (see 'Set up the audio' on page 10).



Option 2: Connect to TV through standard HDMI

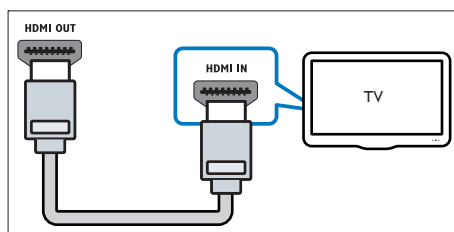
Best quality video

If your TV is not HDMI ARC compliant, connect your home theater to the TV through a standard HDMI connection.

- Using a High Speed HDMI cable, connect the **HDMI OUT (ARC)** connector on your home theater to the **HDMI** connector on the TV.
- Connect an audio cable to hear the TV audio through your home theater (see 'Connect audio from TV and other devices' on page 8).
- On your TV, turn on HDMI-CEC operations. For details, see the TV user manual.
 - If you cannot hear the TV audio through your home theater, set up the audio manually (see 'Set up the audio' on page 10).

Note

- If your TV has a DVI connector, you can use an HDMI/DVI adapter to connect to TV. However, some of the features may not be available.

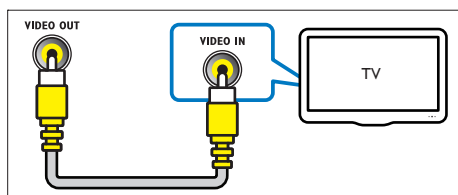


Option 3: Connect to the TV through composite video

Basic quality video

If your TV does not have HDMI connectors, use a composite video connection. A composite connection does not support high-definition video.

- 1 Using a composite video cable, connect the **VIDEO** connector on your home theater to the **VIDEO IN** connector on the TV.
 - The composite video connector might be labeled **AV IN**, **COMPOSITE**, or **BASEBAND**.
- 2 Connect an audio cable to hear the TV audio through your home theater (see 'Connect audio from TV and other devices' on page 8).
- 3 When you watch TV programs, press **SOURCE** on your home theater repeatedly to select the correct audio input.
- 4 When you watch videos, switch your TV to the correct video input. For details, see the TV user manual.



Connect audio from TV and other devices

Play audio from TV or other devices through your home theater speakers.

Use the best quality connection available on your TV, home theater, and other devices.

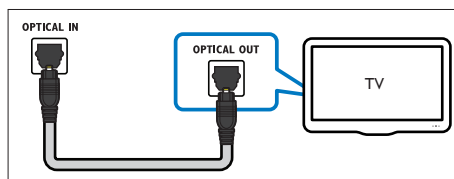
Note

- When your home theater and TV are connected through HDMI ARC, an audio connection is not required (see 'Option 1: Connect to TV through HDMI (ARC)' on page 7).

Option 1: Connect audio through a digital optical cable

Best quality audio

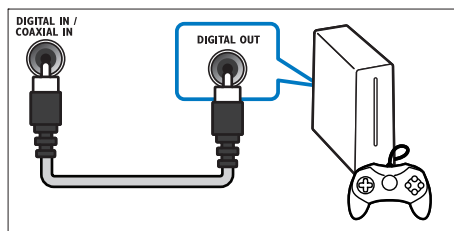
- 1 Using an optical cable, connect the **OPTICAL** connector on your home theater to the **OPTICAL OUT** connector on the TV or other device.
 - The digital optical connector might be labeled **SPDIF** or **SPDIF OUT**.



Option 2: Connect audio through a digital coaxial cable

Good quality audio

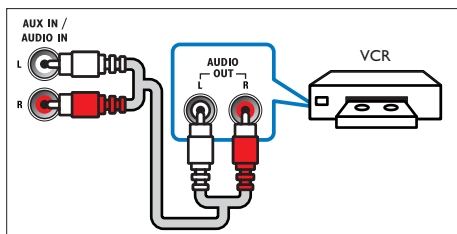
- 1 Using a coaxial cable, connect the **COAXIAL** connector on your home theater to the **COAXIAL/DIGITAL OUT** connector on the TV or other device.
 - The digital coaxial connector might be labeled **DIGITAL AUDIO OUT**.



Option 3: Connect audio through analog audio cables

Basic quality audio

- 1 Using an analog cable, connect the **AUX** connectors on your home theater to the **AUDIO OUT** connectors on the TV or other device.



Set up speakers

Set up the speakers manually to experience customized surround sound.

Before you start

Make the necessary connections described in the quick start guide, and then switch the TV to the correct source for your home theater.

- 1 Press **⬆** (Home).
- 2 Select **[Setup]**, and then press **OK**.
- 3 Select **[Audio] > [Speaker Setup]**.
- 4 Enter the distance for each speaker, and then listen to the test tones and change the volume. Experiment with the speaker positions to find the ideal setting.

Set up EasyLink (HDMI-CEC control)

This home theater supports Philips EasyLink, which uses the HDMI-CEC (Consumer Electronics Control) protocol. EasyLink-compliant devices that are connected through HDMI can be controlled by a single remote control.

Note

- Depending on the manufacturer, HDMI-CEC is known by many names. For information on your device, see the user manual of the device.
- Philips does not guarantee 100% interoperability with all HDMI-CEC devices.

Before you start

- Connect your home theater to the HDMI-CEC compliant device through HDMI connection.
- Make the necessary connections described in the quick start guide, and then switch the TV to the correct source for your home theater.

Enable EasyLink

- 1 Press **⬆** (Home).
- 2 Select **[Setup]**, and then press **OK**.
- 3 Select **[EasyLink] > [EasyLink] > [On]**.
- 4 On your TV and other connected devices, turn on HDMI-CEC control. For details, see the user manual of the TV or other devices.
 - On your TV, set the audio output to 'Amplifier' (instead of TV speakers). For details, see the TV user manual.

EasyLink controls

With EasyLink, you can control your home theater, TV, and other connected HDMI-CEC compliant devices with a single remote control.

- **[One Touch Play]** (One-touch play): When a video disc is in the disc compartment, press **▶ (Play)** to wake up the TV from standby, and then play a disc.
- **[One Touch Standby]** (One-touch standby): If one-touch standby is enabled, your home theater can switch to standby with the remote control of the TV or other HDMI-CEC devices.
- **[System Audio Control]** (System audio control): If system audio control is enabled, the audio of the connected device is output through your home theater speakers automatically when you play the device.
- **[Audio Input Mapping]** (Audio input mapping): If system audio control does not work, map the connected device to the correct audio input connector on your home theater (see 'Set up the audio' on page 10).

Note

- To change the EasyLink control settings, press **⬆** (Home), select **[Setup] > [EasyLink]**.

Set up the audio

If you cannot hear the audio output of a connected device through your home theater speakers, check that you have enabled Easylink on all the devices (see 'Enable EasyLink' on page 9). Then, set up the EasyLink audio control.

- 1 Press **⬆** (Home).
- 2 Select **[Setup]**, and then press **OK**.
- 3 Select **[EasyLink] > [System Audio Control] > [On]**.
 - To play the audio from the TV speakers, select **[Off]**, and skip the following steps.
- 4 Select **[EasyLink] > [Audio Input Mapping]**.
- 5 Follow the onscreen instructions to map the connected device to the audio inputs on your home theater:
 - If you connect your home theater to the TV through an HDMI ARC connection, make sure that the TV audio is mapped to the ARC input on your home theater.

Connect and set up a home network

Connect your home theater to a home network with internet access and enjoy:

- YouTube leanback
- Picasa web albums
- BD-Live applications
- Software update



Caution

- Familiarize yourself with the network router and networking principles. If necessary, read documentation that accompanies the network components. Philips is not responsible for lost, damaged, or corrupt data.

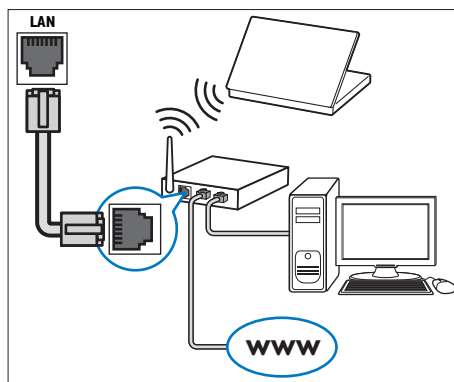
Before you start

- For software updates, make sure that the network router has access to the Internet with high-speed connection and is not restricted by firewalls or other security systems.
- Make the necessary connections described in the quick start guide, and then switch the TV to the correct source for your home theater:

Set up the wired network

What you need

- A network cable (RJ45 straight cable).
- A network router (with DHCP enabled).



- 1 Using a network cable, connect the **LAN** connector on your home theater to the network router.
- 2 Press **⬆** (Home).
- 3 Select **[Setup]**, and then press **OK**.
- 4 Select **[Network] > [Network Installation] > [Wired (Ethernet)]**.
- 5 Follow the onscreen instructions to complete the setup.
 - If connection fails, select **[Retry]**, and then press **OK**.
- 6 Select **[Finish]**, and then press **OK** to exit.
 - To view the network settings, select **[Setup] > [Network] > [View Network Settings]**.

4 Use your home theater

This section helps you use the home theater to play media from a wide range of sources.

Before you start

- Make the necessary connections described in the Quick start guide and the user manual.
- Switch the TV to the correct source for the home theater.

Access the home menu

The home menu provides easy access to connected devices, setup and other useful features in your home theater.

- 1 Press **⬆ (Home)**.
↳ The home menu is displayed.
- 2 Press the **Navigation buttons** and **OK** to select the following:
 - **[play Disc]**: Start disc play.
 - **[browse USB]**: Access the USB content browser
 - **[Picasa]**: Access Picasa web albums.
 - **[YouTube]**: Access YouTube Leanback page.
 - **[Setup]**: Access menus to change video, audio and other settings.
- 3 Press **⬆ (Home)** to exit.

Discs

Your home theater can play DVDs, VCDs, CDs, and Blu-ray discs. It can also play discs that you've made at home, such as CD-R discs of photos, videos, and music.

- 1 Insert a disc into the home theater.
- 2 If the disc does not play automatically, press **DISC** or select **[play Disc]** from the home menu.
- 3 Use the remote control to control play (see 'Remote control' on page 5).
 - It is normal to hear a little noise when you play a Blu-ray disc. This does not mean that your home theater is faulty.

Play buttons

| Button | Action |
|----------------------------|---|
| Navigation buttons | Navigate menus. |
| OK | Confirm an entry or selection. |
| ▶ (Play) | Start or resume play. |
| ⏸ | Pause play. |
| ■ | Stop play. |
| ⏮ / ⏭ | Skip to the previous or next track, chapter or file. |
| ⏮ / ⏭ | Fast backward or fast forward. Press repeatedly to change the search speed. |
| AUDIO | Select an audio language or channel. |
| SUBTITLE | Select subtitle language for video. |
| DISC/POP-UP MENU | Access or exit the disc menu. |
| ≡ OPTIONS | Access the advanced options when you play your audio, video, or media files (see 'Audio, video, and picture options' on page 13). |
| REPEAT | Select or turn off repeat mode. |

Synchronize picture and sound

If the audio and video are not synchronized, delay the audio to match the video.

- 1 Press **≡ SOUND SETTINGS**.
- 2 Select **AUD SYNC**, and then press **OK**.
- 3 Press the **Navigation buttons** (up/down) to synchronize the audio with the video.
- 4 Press **OK** to confirm.

Bonus View on Blu-ray

On Blu-ray discs that support the Bonus View, enjoy extra content such as commentaries in a small screen window. Bonus View is also known as picture-in-picture.

- 1 Enable Bonus View in the Blu-ray disc menu.
- 2 While you play the movie, press **OPTIONS**.
↳ The options menu is displayed.
- 3 Select **[PIP Selection] > [PIP]**.
 - Depending on the video, PIP menu [1] or [2] is displayed.
 - To disable Bonus View, select **[Off]**.

- 4 Select **[2nd Audio Language]** or **[2nd Subtitle Language]**.
- 5 Select the language, and then press **OK**.

BD-Live on Blu-ray

Access additional features on the Blu-ray discs with BD-Live content, such as internet chats with the director, the latest movie trailers, games, wallpaper, and ringtones.

BD-Live services and content vary from disc to disc.

What you need

- Blu-ray disc with BD-Live content
- a USB storage device, with at least 1 GB of memory

- 1 Connect your home theater to a home network with Internet access (see 'Connect and set up a home network' on page 10).
- 2 Connect a USB storage device to your home theater.
- 3 Press **⬆ (Home)** and select **[Setup]**.
- 4 Select **[Advanced] > [BD-Live Security] > [Off]** to enable BD-Live.
 - To disable BD-Live, select **[On]**.
- 5 Select the BD-Live icon in the disc menu, and then press **OK**.
 - ↳ BD-Live starts to load. The loading time depends on the disc and your internet connection.
- 6 Press the **Navigation buttons** to navigate BD-Live, and then press **OK** to select an option.

Note

- To clear the memory on the storage device, press **⬆ (Home)**, select **[Setup] > [Advanced] > [Clear memory]**.

Data files

Your home theater can play pictures, audio and video files contained in a disc or a USB storage device. Before you play a file, check that the file format is supported by your home theater (see 'File formats' on page 20).

- 1 Play the files from a disc or USB storage device.

- 2 To stop play, press **■**.
 - To resume the video from where you stopped, press **▶ (Play)**.
 - To play the video from the start, press **OK**.

Note

- To play DivX DRM protected files, connect your home theater to a TV through an HDMI cable.

Subtitles

If your video has subtitles in multiple languages, select a subtitle language.

Note

- Make sure that the subtitle file has the exact same name as the video file. For example, if the video file is named 'movie.avi', name the subtitle file as 'movie.srt' or 'movie.sub'.
- Your home theater supports the following file formats: .srt, .sub, .txt, .ssa, .ass, .smi, and .sami. If the subtitles do not appear correctly, change the character set.

- 1 While playing video, press **SUBTITLE** to select a language.
- 2 For DivX videos, if the subtitles do not appear correctly, continue the following steps to change the character set.
- 3 Press **OPTIONS**.
 - ↳ The options menu is displayed.
- 4 Select **[Character Set]**, and then select a character set that supports the subtitle.

Europe, India, and Russia

| Character Set | Language |
|-------------------------|--|
| [Standard] | English, Albanian, Danish, Dutch, Finnish, French, Gaelic, German, Italian, Kurdish (Latin), Norwegian, Portuguese, Spanish, Swedish and Turkish |
| [Central Europe] | Albanian, Croat, Czech, Dutch, English, German, Hungarian, Irish, Polish, Romanian, Slovak, Slovene and Sorbian |
| [Cyrillic] | Bulgarian, Belorussian, English, Macedonian, Moldavian, Russian, Serbian and Ukrainian |
| [Greek] | Greek |

VOD code for DivX

Before you purchase DivX videos and play them on your home theater, register the home theater on www.divx.com using the DivX VOD code.

- 1 Press **⬆** (Home).
- 2 Select **[Setup]**, and then press **OK**.
- 3 Select **[Advanced] > [DivX®VOD Code]**.
 ↳ The DivX VOD registration code for your home theater is displayed.

USB storage devices

Enjoy pictures, audio, and video stored on a USB storage device such as an MP4 player or digital camera.


What you need

- A USB storage device that is formatted for FAT or NTFS file systems, and complies with the Mass Storage Class.
- A media file in one of the supported file formats (see 'File formats' on page 20).



Note

- If you use a USB extension cable, USB HUB, or USB multi-reader, the USB storage device may not be recognized.

- 1 Connect a USB storage device to the  (USB) connector on your home theater.
- 2 Press **⬆** (Home).
- 3 Select **[browse USB]**, and then press **OK**.
 ↳ A content browser is displayed.
- 4 Select a file, and then press **OK**.
- 5 Press the play buttons to control play (see 'Play buttons' on page 11).

Audio, video, and picture options

Use advanced features when you play pictures, audio and video files from a disc or a USB storage device.

Audio options

While playing audio, repeat an audio track, a disc, or a folder.

- 1 Press **OPTIONS** repeatedly to cycle through the following functions:
 - **RPT TRACK / RPT FILE**: Repeat the current track or file.
 - **RPT DISC / RPT FOLDER**: Repeat all the tracks on the disc or the folder.
 - **RPT RANDOM**: Play audio tracks in random order.
 - **RPT OFF**: Turn off the repeat mode.

Video options

While watching video, select options such as subtitles, audio language, time search, and picture settings. Depending on the video source, some options are not available.

- 1 Press **OPTIONS**.
 ↳ The video options menu is displayed.
- 2 Press the **Navigation buttons** and **OK** to select and change:
 - **[Audio Language]**: Select audio language for video.
 - **[Subtitle Language]**: Select subtitle language for video.
 - **[Subtitle Shift]**: Change the subtitle position on the screen.
 - **[Info]**: Display information about what is playing.
 - **[Character Set]**: Select a character set that supports the DivX subtitle.
 - **[Time Search]**: Skip to a specific part of the video by entering the time of the scene.
 - **[2nd Audio Language]**: Select the second audio language for Blu-ray video.
 - **[2nd Subtitle Language]**: Select the second subtitle language for Blu-ray video.
 - **[Titles]**: Select a specific title.
 - **[Chapters]**: Select a specific chapter.
 - **[Angle List]**: Select a different camera angle.
 - **[Menus]**: Display the disc menu.
 - **[PIP Selection]**: Display Picture-in-Picture window when playing a Blu-ray disc that supports the Bonus View.
 - **[Zoom]**: Zoom into a video scene or picture. Press the **Navigation buttons** (left/right) to select a zoom factor.
 - **[Repeat]**: Repeat a chapter or title.
 - **[Repeat A-B]**: Mark two points within a chapter or track to repeat play, or turn off the repeat mode.
 - **[Picture Settings]**: Select a predefined color setting.

Picture options

While viewing a picture, zoom into the picture, rotate it, add animation to a slideshow, and change the picture settings.

- 1 Press **OPTIONS**.
↳ The picture options menu appears.
- 2 Press the **Navigation buttons** and **OK** to select and change the following settings:
 - **[Rotate +90]**: Rotate the picture 90 degree clockwise.
 - **[Rotate -90]**: Rotate the picture 90 degree counter-clockwise.
 - **[Zoom]**: Zoom into a video scene or picture. Press the **Navigation buttons** (left/right) to select a zoom factor.
 - **[Info]**: Display picture information.
 - **[Duration per slide]**: Select the display speed for each picture in a slide show.
 - **[Slide Animation]**: Select animation for the slide show.
 - **[Picture Settings]**: Select a predefined color setting.
 - **[Repeat]**: Repeat a selected folder.

Musical slideshow

If the picture and audio files are from the same disc or USB storage device, you can create a musical slideshow.

- 1 Select an audio track, and then press **OK**.
- 2 Press **↶ BACK**, and go to the picture folder.
- 3 Select a picture, and then press **▶ (Play)** to start the slideshow.
- 4 Press **■** to stop slideshow.
- 5 Press **■** again to stop music.



Note

- Make sure that the picture and audio formats are supported by your home theater (see 'File formats' on page 20).

Radio

Listen to FM radio on your home theater, and store up to 40 radio stations.



Note

- AM and digital radio are not supported.
- If no stereo signal is detected, or if fewer than five stations are found, you are prompted to install the radio stations again.

- 1 Extend the FM antenna at the back of your home theater and place it away from the TV or other sources of radiation.
- 2 Press **RADIO**.
↳ If you have already installed the radio stations, the last channel that you listened to is played.
↳ If you have not installed any radio stations, the message **AUTO INSTALL...PRESS PLAY** appears on the display panel. press **▶ (Play)**.
- 3 Use the remote control to listen or to change radio stations.

| Button | Action |
|---|---|
| ◀/▶ or Alphanumeric buttons | Select a preset radio station. |
| Navigation buttons | Left/Right: Search for a radio station. Up/Down: Fine tune a radio frequency. |
| ■ | Press to stop the installation of radio stations. |
| ↶ BACK | Press and hold to erase the preset radio station. |
| OPTIONS | Manual: 1) Press ≡ OPTIONS . 2) Press ◀/▶ to select your preset. 3) Press ≡ OPTIONS again to store the radio station. Automatic: Press and hold for three seconds to reinstall the radio stations. |

Tuning grid

In some countries, you can toggle the FM tuning grid between 50 kHz and 100 kHz. Switching the tuning grid erases all preset radio stations.

- 1 Press **RADIO**.
- 2 Press **■**.
- 3 Press and hold **▶ (Play)** to toggle between 50 kHz or 100 kHz.

MP3 player

Connect a MP3 player to play audio files.

What you need

- An MP3 player.
- A 3.5mm stereo audio cable.

- 1 Using the 3.5mm stereo audio cable, connect the MP3 player to the **MUSIC iLINK** connector on your home theater.
- 2 Press **AUDIO SOURCE** repeatedly until **MUSIC I-LINK** appears on the display panel.
- 3 Press the buttons on the MP3 player to select and play audio files.

YouTube videos

Enjoy YouTube videos through your home theater.

- 1 Connect your home theater to a home network with a high-speed Internet access (see 'Connect and set up a home network' on page 10).
- 2 Press **⬆ (Home)**.
- 3 Select **[YouTube]**, and then press **OK**.
↳ The YouTube Leanback page is displayed.
- 4 Follow the onscreen instructions to browse the YouTube page.
- 5 Use the remote control to select and navigate the application.

| Button | Action |
|---------------------------|---|
| Navigation buttons | Up: Access the onscreen keyboard. Down: Access the onscreen playback buttons. Left/Right: Select a video from the playlist. |

- If you do not press a button within few seconds, the onscreen buttons and menu exit automatically.

- 6 Press **⬆ (Home)** to exit YouTube page.

Picasa web albums

Access Picasa Web Albums through your home theater.

What you need

- An account with Picasa Web Albums.

- 1 Connect your home theater to a home network with Internet access (see 'Connect and set up a home network' on page 10).
- 2 Press **⬆ (Home)**.
- 3 Select **[Picasa]**, and then press **OK**.
- 4 Log in to your Picasa web account.
 - The first time you log in, select **[New user]**, and then enter your user name and password. Save your login information for subsequent use.
 - If you have logged in before, select a stored user name and enter the password.
- 5 Select the onscreen options to view the albums or photos.
- 6 Press **⬆ (Home)** to exit Picasa menu.

View slideshow

- 1 Select **[My photos]** from the Picasa menu, and then press **OK**.
↳ The photo albums in your Picasa Web Albums are displayed.
- 2 Select a photo, and then press **OK** to view the photo in full screen.
- 3 Press **OK** again to view the photos in a slideshow.
- 4 While viewing a slideshow, press **OPTIONS** to access more play options.
- 5 Press **↩ BACK** to return to the previous screen.

Choose sound

This section helps you choose the ideal sound for your video or music.

- 1 Press **III SOUND SETTINGS**.
- 2 Press the **Navigation buttons** (left/ right) to access the sound options on the display.

| Sound settings | Description |
|-----------------|--|
| SOUND | Select a sound mode. |
| SURROUND | Select surround sound or stereo sound. |
| TREBLE | Change the high frequency output. |
| MID | Change the middle frequency output. |
| BASS | Change the low frequency output. |
| AUD SYNC | Delay the audio to match the video. |

- 3 Select an option, and then press **OK**.
- 4 Press **↩ BACK** to exit.
If you do not press a button within a minute, the menu exits automatically.

Sound mode

Select predefined sound modes to suit your video or music.

- 1 Press **III SOUND SETTINGS**.
- 2 Select **SOUND**, and then press **OK**.
- 3 Press the **Navigation buttons** (up/down) to select a setting on the display:
 - **MOVIE**: Enjoy a cinematic audio experience, specially enhanced for movies.
 - **MUSIC**: Recreate the original recording environment of your music, in the studio or at a concert.
 - **ORIGINAL**: Experience the original sound of your movies and music, without added sound effects.
 - **NEWS**: Hear every word with optimized speech and clear vocals.
 - **GAMING**: Enjoy thrilling arcade sounds, ideal for action-packed video games or loud parties.
- 4 Press **OK** to confirm.

Surround sound mode

Experience an immersive audio experience with surround sound modes.

- 1 Press **III SOUND SETTINGS**.
- 2 Select **SURROUND**, and then press **OK**.
- 3 Press the **Navigation buttons** (up/down) to select a setting from your display:
 - **AUTO**: Surround sound based on the audio stream.
 - **5CH STER**: Enhanced stereo sound. Ideal for party music.
 - **MULTI-CH**: Immersive multi-channel sound for an enhanced movie experience.
 - **STEREO**: Two-channel stereo sound. Ideal for listening to music.
- 4 Press **OK** to confirm.

Equalizer

Change the high frequency (treble), mid frequency (mid), and low frequency (bass) settings of the home theater:

- 1 Press **III SOUND SETTINGS**.
- 2 Select **TREBLE**, **MID** or **BASS**, and then press **OK**.
- 3 Press the **Navigation buttons** (up/down) to change the frequency.
- 4 Press **OK** to confirm.

5 Change settings

The home theater settings are already configured for optimal performance. Unless you have a reason to change a setting, we recommend that you keep the default setting.



Note

- You cannot change a setting that is grayed out.
- To return to the previous menu, press **↶** **BACK**. To exit the menu, press **⬆** **(Home)**.

- **[TV Display]**: Select a picture format to fit the TV screen.
- **[HDMI Video]**: Select the resolution of video signal that is output from **HDMI OUT (ARC)** on your home theater. To enjoy the selected resolution, make sure that your TV supports the selected resolution.
- **[HDMI Deep Color]**: Recreate the natural world on your TV screen by displaying vivid images using billion colors. Your home theater must be connected to a Deep Color enabled TV through an HDMI cable.
- **[Picture Settings]**: Select pre defined color settings for the video display.
- **[Watch 3D video]**: Set HDMI video to support 3D or 2D video.

Language settings

- 1 Press **⬆** **(Home)**.
- 2 Select **[Setup]**, and then press **OK**.
- 3 Select **[Preference]**, and then press **OK**.
- 4 Press the **Navigation buttons** and **OK** to select and change:
 - **[Menu language]**: Select a display language for menu.
 - **[Audio]**: Select an audio language for discs.
 - **[Subtitle]**: Select a subtitle language for discs.
 - **[Disc Menu]**: Select a menu language for discs.



Note

- If your preferred disc language is not available, select **[Others]** from the list, and enter the 4-digit language code found at the end of this user manual.
- If you select a language that is not available on a disc, the home theater uses the default language of the disc.



Note

- If you change a setting, make sure that the TV supports the new setting.

Audio settings

- 1 Press **⬆** **(Home)**.
- 2 Select **[Setup]**, and then press **OK**.
- 3 Select **[Audio]**, and then press **OK**.
- 4 Press the **Navigation buttons** and **OK** to select and change:
 - **[Night Mode]**: For quiet listening, decrease the volume of loud sounds on your home theater. Night mode is only available for Dolby-encoded DVD and Blu-ray discs.
 - **[HDMI Audio]**: Set the HDMI audio output from your TV, or disable HDMI audio output from the TV.
 - **[Default sound settings]**: Restore the equalizer settings of all the sound modes to the default values.

Picture and video settings

- 1 Press **⬆** **(Home)**.
- 2 Select **[Setup]**, and then press **OK**.
- 3 Select **[Video]**, and then press **OK**.
- 4 Press the **Navigation buttons** and **OK** to select and change:

Parental control settings

- 1 Press **⬆** **(Home)**.
- 2 Select **[Setup]**, and then press **OK**.
- 3 Select **[Preference]**, and then press **OK**.

- 4 Press the **Navigation buttons** and **OK** to select and change:
 - **[Change Password]**: Set or change your password for parental control access. If you do not have a password or have forgotten your password, enter **0000**.
 - **[Parental Control]**: Restrict access to discs that are recorded with age ratings. To play all discs, irrespective of the ratings, select **8** or **[Off]**.

Display settings

- 1 Press **⬆** (**Home**).
- 2 Select **[Setup]**, and then press **OK**.
- 3 Select **[Preference]**, and then press **OK**.
- 4 Press the **Navigation buttons** and **OK** to select and change:
 - **[Auto Subtitle Shift]**: Enable or disable automatic repositioning of subtitles on TVs that support this feature.
 - **[Display Panel]**: Set the brightness of the home theater front panel display.
 - **[VCD PBC]**: Enable or disable the content menu navigation of VCD and SVCD discs with Play Back Control feature.

Energy saving settings

- 1 Press **⬆** (**Home**).
- 2 Select **[Setup]**, and then press **OK**.
- 3 Select **[Preference]**, and then press **OK**.
- 4 Press the **Navigation buttons** and **OK** to select and change:
 - **[Screen Saver]**: Switch the home theater to screen saver mode after 10 minutes of inactivity.
 - **[Auto Standby]**: Switch the home theater to standby after 30 minutes of inactivity. This timer works only when a disc or USB play is paused or stopped.
 - **[Sleep Timer]**: Set the duration of the sleep timer so that the home theater is switched to standby after the specified period.

Speaker settings

- 1 Press **⬆** (**Home**).
- 2 Select **[Setup]**, and then press **OK**.
- 3 Select **[Advanced]**, and then press **OK**.
- 4 Press the **Navigation buttons** and **OK** to select and change:
 - **[Enhanced Audio]**: Select **[On]** to enable audio post processing at the speaker and enable karaoke settings (if your product supports Karaoke). To play the original audio of the disc, select **[Off]**.



Tip

- Enable audio post processing before you select a predefined sound mode (see 'Sound mode' on page 16).

Restore default settings

- 1 Press **⬆** (**Home**).
- 2 Select **[Setup]**, and then press **OK**.
- 3 Select **[Advanced]** > **[Restore default settings]**, and then press **OK**.
- 4 Select **[OK]**, and then press **OK** to confirm.
 - ↳ Your home theater is reset to its default settings except for some settings such as parental control and DivX/VOD registration code.

6 Update software

Philips continually tries to improve its products. To get the best features and support, update your home theater with the latest software.

Compare the version of your current software with the latest version on www.philips.com/support. If the current version is lower than the latest version available on the Philips support website, upgrade your home theater with the latest software.



Caution

- Do not install a lower version of software than the current version installed on your product. Philips is not liable for problems caused due to software downgrade.

Check software version

Check the version of the current software installed on your home theater.

- Press **⬆ (Home)**.
- Select **[Setup]**, and then press **OK**.
- Select **[Advanced] > [Version Info.]**, and then press **OK**.
 - The software version is displayed.

Update software through USB

What you need

- A USB flash drive that is FAT or NTFS-formatted, with at least 75MB of memory. Do not use a USB hard drive.
- A computer with Internet access.
- An archive utility that supports the ZIP file format.

Step 1: Download the latest software

- Connect a USB flash drive to your computer.
- In your web browser, go to www.philips.com/support.
- At the Philips Support website, find your product and locate the **Software and drivers**.
 - The software update is available as a zip file.

- Save the zip file in the root directory of your USB flash drive.
- Use the archive utility to extract the software update file in the root directory.
 - The files are extracted under the **UPG_ALL** folder of your USB flash drive.
- Disconnect the USB flash drive from your computer.

Step 2: Update the software



Caution

- Do not switch off the home theater or remove the USB flash drive during the update.

- Connect the USB flash drive containing the downloaded file to your home theater.
 - Make sure that the disc compartment is closed and no disc inside.
- Press **⬆ (Home)**.
- Select **[Setup]**, and then press **OK**.
- Select **[Advanced] > [Software Update] > [USB]**.
- Follow the onscreen instructions to confirm the update.
 - Once complete, the home theater automatically switches off and restarts. If it does not, disconnect the power cord for a few seconds and then reconnect it.

Update software through the Internet

- Connect your home theater to a home network with a high-speed Internet access (see 'Connect and set up a home network' on page 10).
- Press **⬆ (Home)**.
- Select **[Setup]**, and then press **OK**.
- Select **[Advanced] > [Software Update] > [Network]**.
 - If an upgrade media is detected, you are prompted to start or cancel the update.
- Follow the onscreen instructions to confirm the update.
 - Once complete, the home theater automatically switches off and restarts. If it does not, disconnect the power cord for a few seconds and then reconnect it.

7 Product specifications






Note

- Specifications and design are subject to change without notice.

Region codes

The type plate on the back or bottom of the home theater shows which regions it supports.

| Country | DVD | BD |
|---------------|---|---|
| Latin America |   |  |

Media formats

- AVCHD, BD, BD-R/ BD-RE, BD-Video, DVD-Video, DVD+R/+RW, DVD-R/-RW, DVD+R/-R DL, CD-R/CD-RW, Audio CD, Video CD/SVCD, Picture files, MP3 media, WMA media, DivX Plus HD media, USB storage device

File formats

- Audio: .aac, .mka, .mp3, .wma, .wav
- Video: .avi, .divx, .mp4, .mkv, .asf, .mpg, .mpeg
- Picture: .jpg, .jpeg, .gif, .png

Audio formats

Your home theater supports the following audio files.

| Extension | Container | Audio codec | Bit rate |
|-----------|-----------|-------------|--------------------|
| .mp3 | MP3 | MP3 | 32 kbps ~ 320 kbps |
| .wma | ASF | WMA | 64 kbps ~ 160 kbps |
| .aac | AAC | AAC, HE-AAC | 192 kbps |
| .wav | WAV | PCM | 1.4 Mbps |
| .m4a | MKV | AAC | 192 kbps |

| | | | |
|------|-----|---------------|--------------------|
| .mka | MKA | PCM | 27,648 Mbps |
| .mka | MKA | Dolby Digital | 640 kbps |
| .mka | MKA | DTS core | 1.54 Mbps |
| .mka | MKA | MPEG | 912 kbps |
| .mka | MKA | MP3 | 32 kbps ~ 320 kbps |
| .mka | MKA | WMA | 64 kbps ~ 160 kbps |
| .mka | MKA | AAC, HE-AAC | 192 kbps |

Video formats

If you have a high definition TV, your home theater allows you to play your video files with:

- Resolution: 1920 x 1080 pixels at
- Frame rate: 6 ~ 30 frames per second.

.avi files in AVI container

| Audio codec | Video codec | Bit rate |
|--|---|------------------------|
| PCM, Dolby Digital, DTS core, MP3, WMA | DivX 3.11, DivX 4.x, DivX 5.x, DivX 6.x | 10 Mbps max |
| | MPEG 1, MPEG 2 | 20 Mbps (peak 40 Mbps) |
| | MPEG 4 ASP | 10 Mbps max |
| | H.264/AVC HP@4.1/4.0; MP@3.2/3.1/3.0 | 20 Mbps (peak 40 Mbps) |

.divx files in AVI container

| Audio codec | Video codec | Bit rate |
|------------------------------|---|------------------------|
| PCM, Dolby Digital, MP3, WMA | DivX 3.11, DivX 4.x, DivX 5.x, DivX 6.x | 10 Mbps max |
| | MPEG 1, MPEG 2 | 20 Mbps (peak 40 Mbps) |
| | MPEG 4 ASP | 10 Mbps max |

.mp4 or .m4v files in MP4 container

| Audio codec | Video codec | Bit rate |
|---------------------------------------|--------------------------------------|------------------------|
| Dolby Digital, MPEG, MP3, AAC, HE-AAC | MPEG 1, MPEG 2 | 20 Mbps (peak 40 Mbps) |
| | MPEG 4 ASP | 10 Mbps max |
| | H.264/AVC HP@4.1/4.0; MP@3.2/3.1/3.0 | 20 Mbps (peak 40 Mbps) |

.mkv files in MKV container

| Audio codec | Video codec | Bit rate |
|---|--------------------------------------|------------------------|
| PCM, Dolby Digital, DTS core, MPEG, MP3, WMA, AAC, HE-AAC | MPEG 1, MPEG 2 | 20 Mbps (peak 40 Mbps) |
| | MPEG 4 ASP | 10 Mbps max |
| | H.264/AVC HP@4.1/4.0; MP@3.2/3.1/3.0 | 20 Mbps (peak 40 Mbps) |

Amplifier

- Total output power: 210W RMS (10%THD)
- Frequency response: 20 Hz-20 kHz / ± 3 dB
- Signal-to-noise ratio: > 65 dB (CCIR) / (A-weighted)
- Input sensitivity:
 - AUX: 2 V
 - Music iLink: 1 V

Video

- Signal system: PAL / NTSC
- HDMI output: 480i/576i, 480p/576p, 720p, 1080i, 1080p, 1080p24

Audio

- S/PDIF Digital audio input:
 - Coaxial: IEC 60958-3
 - Optical: TOSLINK
- Sampling frequency:
 - MP3: 32 kHz, 44.1 kHz, 48 kHz
 - WMA: 44.1 kHz, 48 kHz
- Constant bit rate:
 - MP3: 32 kbps - 320 kbps
 - WMA: 48 kbps - 192 kbps

Radio

- Tuning range:
 - Europe/Russia/China: FM 87.5-108 MHz (50 kHz)
 - Asia Pacific/Latin America: FM 87.5-108 MHz (50/100 kHz)
- Signal-to-noise ratio: FM 50 dB
- Frequency response: FM 200 Hz-12.5 kHz / ± 6 dB

USB

- Compatibility: Hi-Speed USB (2.0)
- Class support: USB Mass Storage Class (MSC)
- File system: FAT16, FAT32, NTFS
- Maximum memory support: < 160 GB

Main unit

- Power supply:
 - Europe/China/Russia/India: 220-240 V~, 50 Hz
 - Latin America/Asia Pacific: 110-240 V~, 50-60 Hz
- Power consumption: 60 W
- Standby power consumption: ≤ 0.9 W
- Dimensions (WxHxD): 360 x 58 x 325 mm
- Weight: 2.4 kg

Subwoofer

- Output power: 35 W RMS (10% THD)
- Impedance: 4 ohm
- Speaker drivers: 133 mm (5.25") woofer
- Dimensions (WxHxD): 160 x 265 x 265 mm
- Weight: 2.50 kg

Speakers**Center speaker:**

- Output power: 35 W RMS (10% THD)
- Speaker impedance: 4 ohm
- Speaker drivers: 1 x 63.5 mm (2.5") woofer
- Dimensions (WxHxD): 159 x 84.5 x 80 mm
- Weight: 0.35 kg

Front/Rear speaker:

- Output power: 4 x 35 W RMS (10% THD)
- Speaker impedance: 4 ohm
- Speaker drivers: 1 x 63.5 mm (2.5") woofer
- Dimensions (WxHxD): 84.5 x 159 x 80 mm
- Weight: 0.35 kg/each

Remote control batteries

- 2 × AAA-R03-1.5 V

Laser

- Laser Type (Diode): InGaN/AlGaIn (BD), AlGaInP (DVD/CD)
- Wave length: 405 +7 nm/-7 nm (BD), 655 +10 nm/-10 nm (DVD), 790 +10 nm/-20 nm (CD)
- Output power (Max. ratings): 20 mW (BD), 6 mW (DVD), 7 mW (CD)

8 Troubleshooting



Warning

- Risk of electric shock. Never remove the casing of the product.

To keep the warranty valid, never try to repair the product yourself.

If you have problems using this product, check the following points before you request service. If you still have a problem, get support at www.philips.com/support.

Main unit

The buttons on the home theater do not work.

- Disconnect the home theater from the power supply for a few minutes, then reconnect.

Picture

No picture.

- Make sure that the TV is switched to the correct source for the home theater.

No picture on a TV connected through HDMI.

- Make sure that the HDMI cable is not faulty. If it is faulty, replace it with a new cable.
- Press **⬆️ (Home)** and then **731** on the remote control to restore the default picture resolution.
- Change the HDMI video setting, or wait for 10 seconds for auto recovery (see 'Picture and video settings' on page 17).

Disc does not play high-definition video.

- Make sure that the disc contains high-definition video.
- Make sure that the TV supports high-definition video.
- Use an HDMI cable to connect to the TV.

Sound

No sound from home theater speakers.

- Connect the audio cable from your home theater to your TV or other devices. You do not need a separate audio connection when the home theater and TV are connected through an **HDMI ARC** connection.
- Set up the audio for the connected device (see 'Set up the audio' on page 10).
- Reset your home theater to its factory settings (see 'Restore default settings' on page 18), then switch it off and switch on again.
- On your home theater, press **SOURCE** repeatedly to select the correct audio input.

Distorted sound or echo.

- If you play audio from the TV through the home theater, make sure that the TV is muted.

Audio and video are not synchronized.

- 1) Press **III SOUND SETTINGS**. 2) Press the **Navigation buttons** (left/right) to select **AUD SYNC**, and then press **OK**. 3) Press the **Navigation buttons** (up/down) to synchronize the audio with the video.

Play

Cannot play a disc.

- Clean the disc.
- Make sure that the home theater supports the type of disc (see 'Media formats' on page 20).
- Make sure that the home theater supports the region code of the disc.
- If the disc is a DVD±RW or DVD±R disc, make sure that it is finalized.

Cannot play a DivX file.

- Make sure that the DivX file is encoded according to the 'Home Theater Profile' with the DivX encoder.
- Make sure that the DivX file is complete.

DivX subtitles do not display correctly.

- Make sure that the subtitle file name is the same as the movie file name (see 'Subtitles' on page 12).
- Select the correct character set: 1) Press **OPTIONS**. 2) Select **[Character Set]**. 3) Select the supported character set. 4) Press **OK**.

Cannot read the contents of a USB storage device.

- Make sure that the format of the USB storage device is compatible with the home theater.
- Make sure that the file system on the USB storage device is supported by the home theater.

'No entry' or 'x' sign appears on the TV.

- The operation is not possible.

EasyLink does not work.

- Make sure that the home theater is connected to a Philips brand EasyLink TV, and the EasyLink option is turned on (see 'Set up EasyLink (HDMI-CEC control)' on page 9).

When you switch on the TV, the home theater automatically switches on.

- This behavior is normal when you are using Philips EasyLink (HDMI-CEC). To make the home theater work independently, switch off EasyLink.

Cannot access BD-Live features.

- Make sure that the home theater is connected to a home network with internet access (see 'Connect and set up a home network' on page 10).
- Make sure that the network is set up (see 'Set up the wired network' on page 10).
- Make sure that the Blu-ray disc supports BD-Live features.
- Clear memory storage (see 'BD-Live on Blu-ray' on page 12).

TV screen is black when you play a Blu-ray video or a DivX copy protected video.

- Make sure that the home theater is connected to the TV through an HDMI cable.
- Switch to the correct HDMI source on the TV.

Poor playback on YouTube Leanback or Picasa.

- Make sure that the home theater is connected to a home network and is properly set up (see 'Connect and set up a home network' on page 10).
- Make sure that the internet connection speed is higher than 2 MBPS to obtain optimum performance.

9 Notice

This section contains the legal and trademark notices.

Copyright



Be responsible
Respect copyrights

This item incorporates copy protection technology that is protected by U.S. patents and other intellectual property rights of Rovi Corporation. Reverse engineering and disassembly are prohibited.

Compliance

This product incorporates proprietary technology under license from Verance Corporation and is protected by U.S. Patent 7,369,677 and other U.S. and worldwide patents issued and pending as well as copyright and trade secret protection for certain aspects of such technology. Cinavia is a trademark of Verance Corporation. Copyright 2004-2010 Verance Corporation. All rights reserved by Verance. Reverse engineering or disassembly is prohibited.

Cinavia notice

This product uses Cinavia technology to limit the use of unauthorized copies of some commercially-produced film and videos and their soundtracks. When a prohibited use of an unauthorized copy is detected, a message will be displayed and playback or copying will be interrupted.

More information about Cinavia technology is provided at the Cinavia Online Consumer Information Center at <http://www.cinavia.com>. To request additional information about Cinavia by mail, send a postcard with your mailing address to: Cinavia Consumer Information Center, P.O. Box 86851, San Diego, CA, 92138, USA.

Open source software

Philips Electronics Singapore Pte Ltd hereby offers to deliver, upon request, a copy of the complete corresponding source code for the copyrighted

open source software packages used in this product for which such offer is requested by the respective licenses. This offer is valid up to three years after product purchase to anyone in receipt of this information. To obtain source code, please contact open.source@philips.com. If you prefer not to use email or if you do not receive confirmation receipt within a week after mailing to this email address, please write to "Open Source Team, Philips Intellectual Property & Standards, P.O. Box 220, 5600 AE Eindhoven, The Netherlands". If you do not receive timely confirmation of your letter, please email to the email address above. The texts of the licenses and acknowledgements for open source software used in this product are included on a separate leaflet.

Trademarks



"Blu-ray Disc", "Blu-ray" and "Blu-ray Disc" logo are trademarks of Blu-ray Disc Association.



Java and all other Java trademarks and logos are trademarks or registered trademarks of Sun Microsystems, Inc. in the United States and/or other countries.



Manufactured under license under U.S. Patent Nos: 5,956,674; 5,974,380; 6,226,616; 6,487,535; 7,392,195; 7,272,567; 7,333,929; 7,212,872 & other U.S. and worldwide patents issued & pending. DTS-HD, the Symbol, & DTS-HD and the Symbol together are registered trademarks & DTS-HD Master Audio | Essential is a trademark of DTS, Inc. Product includes software. © DTS, Inc. All Rights Reserved.



Manufactured under license from Dolby Laboratories. Dolby and the double-D symbol are trademarks of Dolby Laboratories.



Covered by one or more of the following U.S. patents: 7,295,673; 7,460,668; 7,515,710; 7,519,274. DivX®, DivX Certified®, DivX Plus® HD and associated logos are trademarks of Rovi Corporation or its subsidiaries and are used under license.

ABOUT DIVX PLUS® HD: DivX® is a digital video format created by DivX, Inc. This is an official DivX Certified® device that plays DivX video, including DivX® Plus HD video (H.264/MKV) up to 1080p and premium content. Visit www.divx.com for more information and software tools to convert your files into DivX video.

ABOUT DIVX VIDEO: DivX® is a digital video format created by DivX, LLC, a subsidiary of Rovi Corporation. This is an official DivX Certified® device that plays DivX video. Visit divx.com for more information and software tools to convert your files into DivX videos.

ABOUT DIVX VIDEO-ON-DEMAND: This DivX Certified® device must be registered in order to play purchased DivX Video-on-Demand (VOD) movies. To obtain your registration code, locate the DivX VOD section in your device setup menu. Go to vod.divx.com for more information on how to complete your registration.



HDMI, the HDMI logo, and High-Definition Multimedia Interface are trademarks or registered trademarks of HDMI licensing LLC in the United States and other countries.



10 Index

| | |
|-----------------------|----|
| 2 | |
| 2nd audio language | 11 |
| 2nd subtitle language | 11 |

| | |
|--------------|---|
| 5 | |
| 5.1 speakers | 6 |

| | |
|----------------------------------|----|
| A | |
| advanced settings | 18 |
| amplifier | 21 |
| audio connection (analog cable) | 8 |
| audio connection (coaxial cable) | 8 |
| audio connection (HDMI ARC) | 7 |
| audio connection (optical cable) | 8 |
| audio formats | 20 |
| audio from other devices | 8 |
| audio input mapping | 10 |
| audio language | 17 |
| audio options | 13 |
| audio post processing | 18 |
| audio settings | 17 |
| audio setup | 10 |
| auto standby | 18 |
| auto subtitle shift | 18 |

| | |
|------------|----|
| B | |
| batteries | 22 |
| BD-Live | 12 |
| Blu-ray | 11 |
| Bonus View | 11 |
| brightness | 18 |

| | |
|------------------------|----|
| C | |
| change password | 17 |
| character set | 12 |
| clear BD-Live memory | 12 |
| connect to TV | 7 |
| connectors | 4 |
| control buttons (disc) | 11 |
| control buttons (USB) | 11 |
| copyright protection | 24 |
| customer support | 3 |

D

| | |
|------------------|----|
| data files | 12 |
| deep color | 17 |
| default settings | 18 |
| disc language | 17 |
| disc menu | 17 |
| display panel | 18 |
| disposal | 3 |
| DivX | 12 |

E

| | |
|---------------------|----|
| Easylink (HDMI-CEC) | 9 |
| eject disc | 4 |
| enhanced audio | 18 |
| environment | 3 |

F

| | |
|------------------|----|
| factory settings | 18 |
| FAQs | 3 |
| file formats | 20 |

H

| | |
|--------------|----|
| HDMI ARC | 7 |
| HDMI audio | 17 |
| HDMI-CEC | 9 |
| home menu | 11 |
| home network | 10 |

I

| | |
|----------|----|
| internet | 10 |
|----------|----|

M

| | |
|--------------------|----|
| main unit | 4 |
| manual setup | 9 |
| media formats | 20 |
| menu language | 17 |
| MP3 | 15 |
| musical slideshows | 14 |

N

| | |
|------------|----|
| network | 10 |
| night mode | 17 |

O

| | |
|-------------------|----|
| one-touch play | 9 |
| one-touch standby | 9 |
| options | 13 |

P

| | |
|-------------------------|----|
| parental control | 17 |
| PBC (play back control) | 18 |
| Picasa web albums | 15 |
| picture options | 14 |
| picture resolution | 17 |
| picture settings | 17 |
| picture-in-picture | 11 |
| play disc | 11 |
| play music | 15 |
| play radio | 14 |
| play USB storage device | 13 |
| power settings | 18 |
| predefined sound mode | 16 |
| preference | 17 |
| program radio stations | 14 |

R

| | |
|----------------|----|
| radio | 14 |
| recycling | 3 |
| region codes | 20 |
| remote control | 5 |
| repeat | 13 |

S

| | |
|-------------------------------|----|
| shuffle | 13 |
| sleep timer | 18 |
| slide animation | 14 |
| software update | 19 |
| software version | 19 |
| sound | 16 |
| speaker position | 6 |
| speaker setup | 9 |
| speaker specifications | 20 |
| subtitle language | 17 |
| subtitle position | 18 |
| surround sound | 16 |
| synchronize picture and sound | 11 |
| system audio control | 10 |

T

| | |
|---------------------------|----|
| troubleshooting (picture) | 22 |
| troubleshooting (play) | 23 |
| troubleshooting (sound) | 22 |
| tune radio stations | 14 |
| tuning grid | 14 |

U

| | |
|------------------------------------|----|
| update software (through Internet) | 19 |
| update software (through USB) | 19 |
| USB storage device | 13 |
| user manual | 3 |

V

| | |
|------------------------------------|----|
| VCD | 18 |
| video connection (composite video) | 8 |
| video connection (HDMI ARC) | 7 |
| video connection (standard HDMI) | 7 |
| video formats | 21 |
| video options | 13 |
| video settings | 17 |
| VOD code (DivX) | 13 |

W

| | |
|---------------|----|
| wired network | 10 |
|---------------|----|

Y

| | |
|----------------|----|
| YouTube videos | 15 |
|----------------|----|

Language Code

| | |
|-----------------------------|------|
| Abkhazian | 6566 |
| Afar | 6565 |
| Afrikaans | 6570 |
| Amharic | 6577 |
| Arabic | 6582 |
| Armenian | 7289 |
| Assamese | 6583 |
| Avestan | 6569 |
| Aymara | 6589 |
| Azerhijani | 6590 |
| Bahasa Melayu | 7783 |
| Bashkir | 6665 |
| Belarusian | 6669 |
| Bengali | 6678 |
| Bihari | 6672 |
| Bislama | 6673 |
| Bokmål, Norwegian | 7866 |
| Bosanski | 6683 |
| Brezhoneg | 6682 |
| Bulgarian | 6671 |
| Burmese | 7789 |
| Castellano, Español | 6983 |
| Catalán | 6765 |
| Chamorro | 6772 |
| Chechen | 6769 |
| Chewa; Chichewa; Nyanja | 7889 |
| 中文 | 9072 |
| Chuang; Zhuang | 9065 |
| Church Slav; Slavonic | 6785 |
| Chuvash | 6786 |
| Corsican | 6779 |
| âesky | 6783 |
| Dansk | 6865 |
| Deutsch | 6869 |
| Dzongkha | 6890 |
| English | 6978 |
| Esperanto | 6979 |
| Estonian | 6984 |
| Euskara | 6985 |
| ᐃᐣᐣᐣᐣᐣᐣ | 6976 |
| Faroese | 7079 |
| Français | 7082 |
| Frysk | 7089 |
| Fijian | 7074 |
| Gaelic; Scottish Gaelic | 7168 |
| Gallegan | 7176 |
| Georgian | 7565 |
| Gikuyu; Kikuyu | 7573 |
| Guarani | 7178 |
| Gujarati | 7185 |
| Hausa | 7265 |
| Herero | 7290 |
| Hindi | 7273 |
| Hiri Motu | 7279 |
| Hrvatski | 6779 |
| Ido | 7379 |
| Interlingua (International) | 7365 |
| Interlingue | 7365 |
| Inuktitut | 7385 |

| | |
|-----------------------------|------|
| Inupiaq | 7375 |
| Irish | 7165 |
| Íslenska | 7383 |
| Italiano | 7384 |
| Ivrit | 7269 |
| Japanese | 7465 |
| Javanese | 7486 |
| Kalaallisut | 7576 |
| Kannada | 7578 |
| Kashmiri | 7583 |
| Kazakh | 7575 |
| Kernewek | 7587 |
| Khmer | 7577 |
| Kinyarwanda | 8287 |
| Kirghiz | 7589 |
| Komi | 7586 |
| Korean | 7579 |
| Kuanyama; Kwanyama | 7574 |
| Kurdish | 7585 |
| Lao | 7679 |
| Latina | 7665 |
| Latvian | 7686 |
| Letzeburgesch; | 7666 |
| Limburgan; Limburger | 7673 |
| Lingala | 7678 |
| Lithuanian | 7684 |
| Luxembourgish; | 7666 |
| Macedonian | 7775 |
| Malagasy | 7771 |
| Magyar | 7285 |
| Malayalam | 7776 |
| Maltese | 7784 |
| Manx | 7186 |
| Maori | 7773 |
| Marathi | 7782 |
| Marshallese | 7772 |
| Moldavian | 7779 |
| Mongolian | 7778 |
| Nauru | 7865 |
| Navaho; Navajo | 7886 |
| Ndebele, North | 7868 |
| Ndebele, South | 7882 |
| Ndonga | 7871 |
| Nederlands | 7876 |
| Nepali | 7869 |
| Norsk | 7879 |
| Northern Sami | 8369 |
| North Ndebele | 7868 |
| Norwegian Nynorsk; | 7878 |
| Occitan; Provençal | 7967 |
| Old Bulgarian; Old Slavonic | 6785 |
| Oriya | 7982 |
| Oromo | 7977 |
| Ossetian; Ossetic | 7983 |
| Pali | 8073 |
| Panjabi | 8065 |
| Persian | 7065 |
| Polski | 8076 |
| Português | 8084 |

| | |
|-----------------------|------|
| Pushto | 8083 |
| Russian | 8285 |
| Quechua | 8185 |
| Raeto-Romance | 8277 |
| Romanian | 8279 |
| Rundi | 8278 |
| Samoan | 8377 |
| Sango | 8371 |
| Sanskrit | 8365 |
| Sardinian | 8367 |
| Serbian | 8382 |
| Shona | 8378 |
| Shqip | 8381 |
| Sindhi | 8368 |
| Sinhalese | 8373 |
| Slovensky | 8373 |
| Slovenian | 8376 |
| Somali | 8379 |
| Sotho; Southern | 8384 |
| South Ndebele | 7882 |
| Sundanese | 8385 |
| Suomi | 7073 |
| Swahili | 8387 |
| Swati | 8383 |
| Svenska | 8386 |
| Tagalog | 8476 |
| Tahitian | 8489 |
| Tajik | 8471 |
| Tamil | 8465 |
| Tatar | 8484 |
| Telugu | 8469 |
| Thai | 8472 |
| Tibetan | 6679 |
| Tigrinya | 8473 |
| Tonga (Tonga Islands) | 8479 |
| Tsonga | 8483 |
| Tswana | 8478 |
| Türkçe | 8482 |
| Turkmen | 8475 |
| Twi | 8487 |
| Uighur | 8571 |
| Ukrainian | 8575 |
| Urdu | 8582 |
| Uzbek | 8590 |
| Vietnamese | 8673 |
| Volapuk | 8679 |
| Walloon | 8765 |
| Welsh | 6789 |
| Wolof | 8779 |
| Xhosa | 8872 |
| Yiddish | 8973 |
| Yoruba | 8979 |
| Zulu | 9085 |

