



Philips  
Mini Hi-Fi System

**Bluetooth®**

Channel fader between 2 USBs  
CD, MP3-CD, 2 USB, Tuner  
1100W, NX bass

**NTRX710MU**

# The ultimate sound machines

## Obsessed with sound

Revel in bone shaking bass with this 1100W Philips system featuring NX bass to power up any party. Get tracks on USB drives mixed automatically with Auto DJ, 260K LED lighting effects, and effortless Bluetooth streaming from smartphones.

### **Designed to party**

- 260K LED lights for great party atmosphere
- Auto-DJ for automatic mixing of tracks on USB drive
- DJ Crossfader for mixing your tracks
- Handles and wheels for easy transportation

### **Engineered for powerful sound**

- 1100W RMS total output power / 13000W PMPO
- NX bass button for instant sound boost & light effects

### **Convenient and easy to use**

- Music transfer between 2 USB for easy music sharing

### **Enjoy your music from multiple sources**

- Enjoy MP3 music directly from your portable USB devices
- Stream music via Bluetooth®

# PHILIPS

## Mini Hi-Fi System

Bluetooth® Channel fader between 2 USBs, CD, MP3-CD, 2 USB, Tuner, 1100W, NX bass

NTRX710MU/77

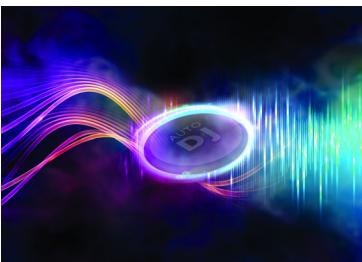
# Highlights

### 260K LED lights



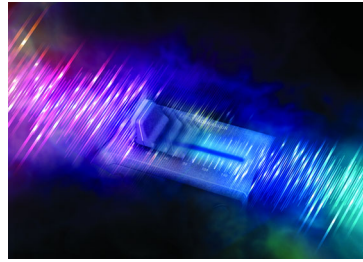
Add the ultimate atmosphere, ambiance and passion to any party, with thousands of colored lights that flicker, flash and flow in time with your music. Easily choose light colors to match your theme, or just pick one of the systems many presets. Flick the NX bass button to make the light show even more intense.

### Auto-DJ for automatic mixing



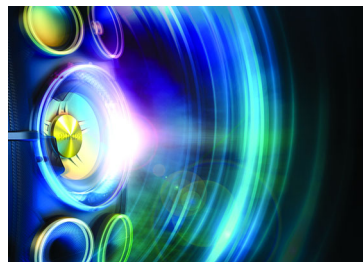
You can automate your tunes with Auto-DJ, which automatically mixes tracks on a connected USB drive. Add sound effects with the DJ jogwheel. Rock the house continuously!

### DJ Crossfader for mixing



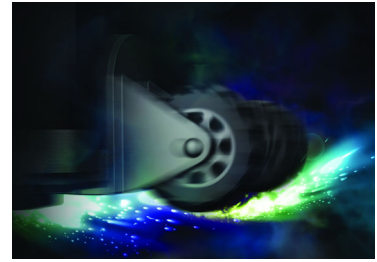
Be the master of every party! DJ cross fader lets you mix your favorite tracks between channel A and B, so you can flow seamlessly between songs. Just select the device output for deck A (USB, Bluetooth®, CD, Audio in or tuner) to start the music, then choose the input device for deck B (USB or audio in). To change tracks, swipe the fader from one side to another for a smooth transition that keeps the party pumping.

### NX bass button



Available throughout the range, NX bass temporarily boosts bass and loudness to the extreme. Hit the NX bass button to instantly juice up your sound, make lighting effects go wild, and feel the immense bass of the subwoofers thundering through your bones.

### Handles and wheels



Bring massive sound wherever you need it, upstairs, downstairs, indoors or out. NITRO audio solutions slip smoothly into any home thanks to their optimized footprints and clutter free, convenient controls integration. Link them up with your TV or PC to supersize your experience and make music and movies to sound bigger than ever. Or move them outside using built-in handles and wheels to turn them into the ultimate outdoor party sound system.

### Stream music via Bluetooth®



If you've got a big music collection stored away on a smartphone, tablet or computer, stream it to a NITRO system using digital Bluetooth® wireless music streaming and make it sound incredible. Powerful sound is rarely this easy or this convenient.



# Specifications

## Sound

- Output power: 13000PMPO
- Total Sound Power (RMS): 1100 W
- Sound enhancement: Dynamic Bass Boost 3 steps, digital sound control 4 modes, NX Bass
- Equalizer: 63Hz, 250Hz, 1kHz, 4kHz, 12kHz

## Loudspeakers

- Number of speaker boxes: 2
- Speaker drivers: 8" woofer, 2" tweeter
- Speaker types: bass reflex speaker system

## Audio playback

- USB Direct playback modes: fast backward/fast forward, play/pause, previous/next, repeat, shuffle, stop

## Audio recording

- Recording media: USB device
- USB recording sources: tuner, AUX, microphone in, USB, Bluetooth
- USB recording modes: instant record, programmed tracks, schedule radio program, single track

## Tuner/Reception/Transmission

- Station presets: 40
- Tuner bands: FM, MW
- Antenna: FM antenna, MW antenna
- Tuner enhancement: auto digital tuning, auto scan, Easy set (plug & play)

## Connectivity

- Microphone: Dual microphone sockets(6.3mm)
- USB: Dual USB host
- Audio in: 3.5mm stereo line in x2
- Aux in: 4 x RCA, DVD, Game, PC in, TV

## Convenience

- Karaoke: MIC volume
- Loader type: slot

## Accessories

- Remote control: 28-key with 2xAAA batteries
- Cables/Connection: MP3 Link cable, \*Flat pin adaptor
- Others: batteries for remote control, FM/MW antenna, Quick start guide
- User Manual: B-Portuguese, Spanish
- Warranty: World Wide Guarantee booklet

## Dimensions

- Gross weight: 31.41 kg
- Main unit width: 390 mm
- Main unit height: 1135 mm
- Packaging width: 566 mm
- Packaging height: 1252 mm
- Packaging depth: 486 mm
- Main unit depth: 396.5 mm

## Power

- Power supply: 100 - 240V AC, 50/60Hz

## Auto DJ

- Metal
- Party

## DJ Effect

- Beat Box
- Reverb
- Scratch
- Yeah

## DJ Mix

- Source A: Audio in, Bluetooth, Tuner, USB
- Source B: Audio in, USB



Issue date 2014-08-12

Version: 5.0.3

12 NC: 8670 001 07656  
EAN: 87 12581 69995 6

© 2014 Koninklijke Philips N.V.  
All Rights reserved.

Specifications are subject to change without notice.  
Trademarks are the property of Koninklijke Philips N.V.  
or their respective owners.

[www.philips.com](http://www.philips.com)

\* Avoid extensive use of the set in a volume higher than 85 decibel  
because this may damage your hearing.