

Register your product and get support at

www.philips.com/welcome

HMP7000



User manual

3

PHILIPS



EN

Please refer to the safety information before using the product.

Trademark notice



HDMI, the HDMI logo, and High-Definition Multimedia Interface are trademarks or registered trademarks of HDMI licensing LLC in the United States and other countries.



Manufactured under license from Dolby Laboratories. Dolby and the double-D symbol are trademarks of Dolby Laboratories.



This item incorporates copy protection technology that is protected by U.S. patents and other intellectual property rights of Rovi Corporation. Reverse engineering and disassembly are prohibited. ABOUT DIVX VIDEO: DivX[®] is a digital video format created by DivX, LLC, a subsidiary of Rovi Corporation. This is an official DivX Certified[®] device that plays DivX video. Visit divx.com for more information and software tools to convert your files into DivX videos. ABOUT DIVX VIDEO-ON-DEMAND: This DivX Certified[®] device must be registered in order to play purchased DivX Video-on-Demand (VOD) movies. To obtain your registration code, locate the DivX VOD section in your device setup menu. Go to vod.divx.com for more information on how to complete your registration.. DivX Certified[®] to play DivX[®] and DivX Plus[®] HD (H.264/MKV) video up to 1080p HD including premium content. DivX[®], DivX Certified[®], DivX Plus[®] HD and associated logos are trademarks of Rovi Corporation or its subsidiaries and are used under license.



Manufactured under license under U.S. Patent #'s: 5,451,942; 5,956,674; 5,974,380; 5,978,762; 6,487,535 & other U.S. and worldwide patents issued & pending. DTS and the Symbol are registered trademarks, & DTS 2.0+Digital Out and the DTS logos are trademarks of DTS, Inc. Product includes software. © DTS, Inc. All Rights Reserved.

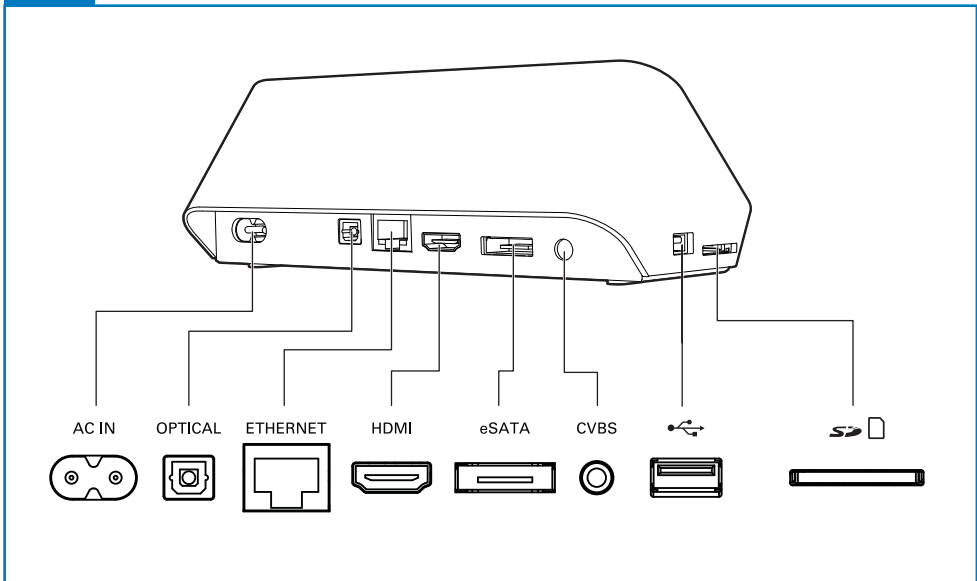
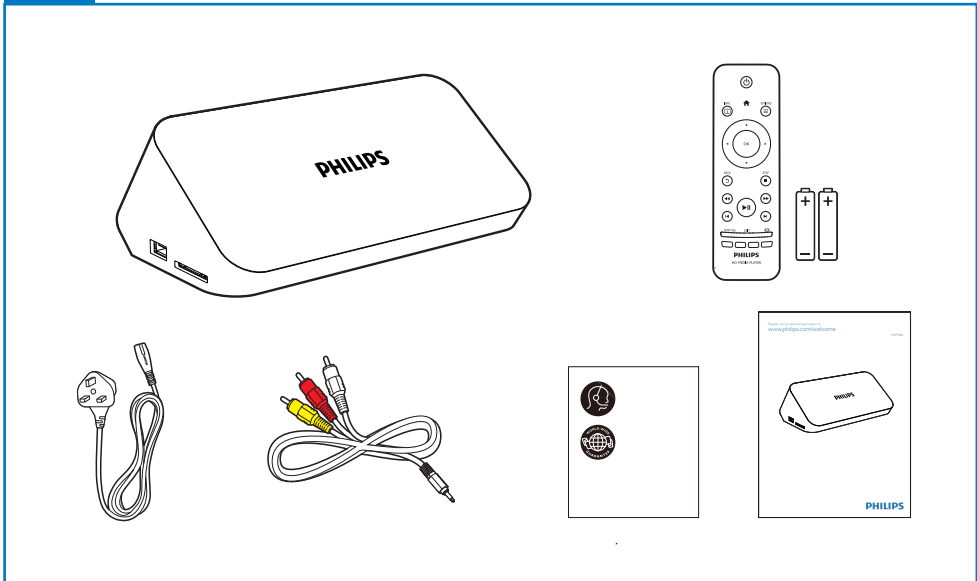


DLNA[®], the DLNA Logo and DLNA CERTIFIED[®] are trademarks, service marks, or certification marks of the Digital Living Network Alliance.



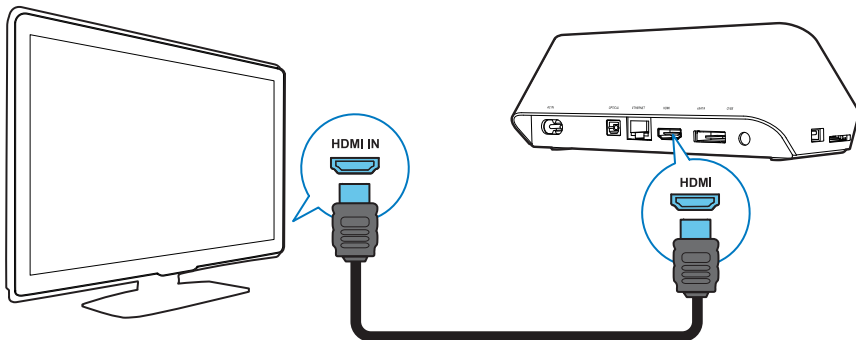
The Wi-Fi CERTIFIED Logo is a certification mark of the Wi-Fi Alliance.



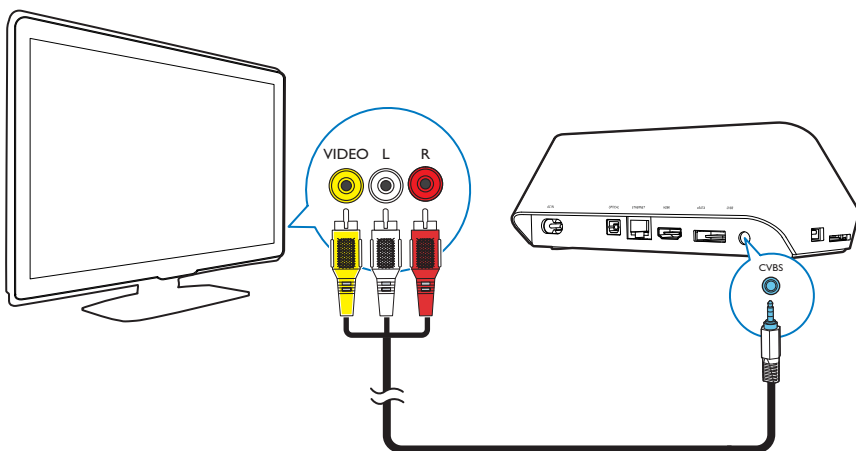


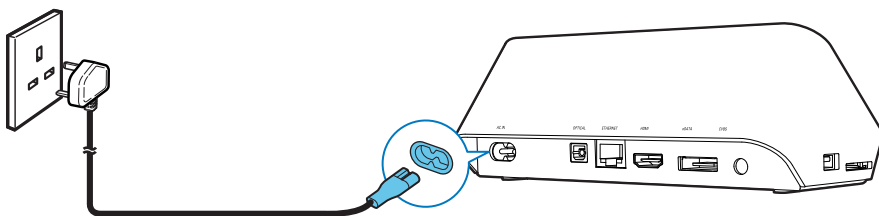
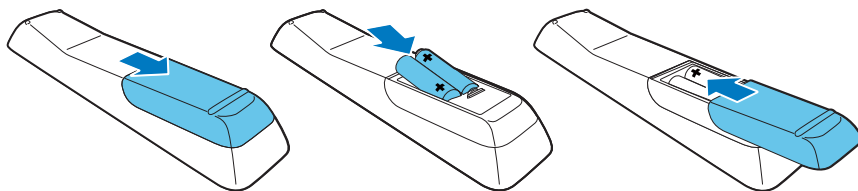


HDMI ★★☆☆

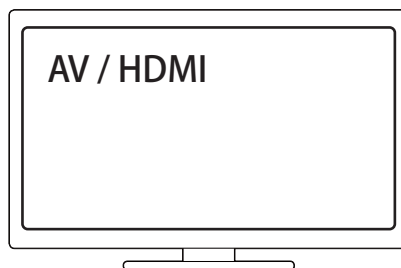
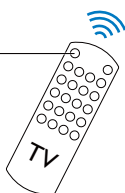


TV OUT + AUDIO OUT ★★

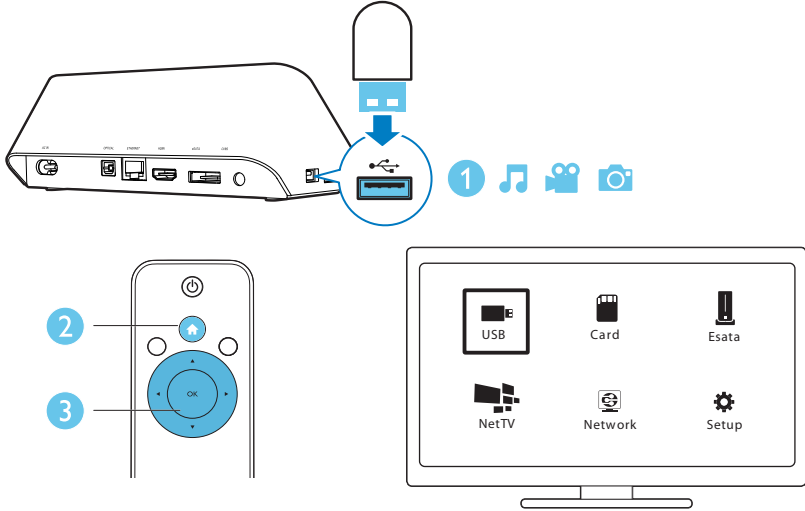




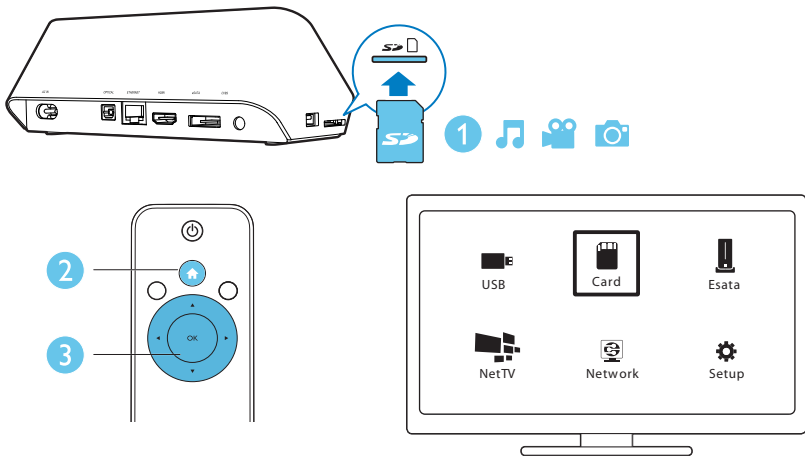

SOURCE

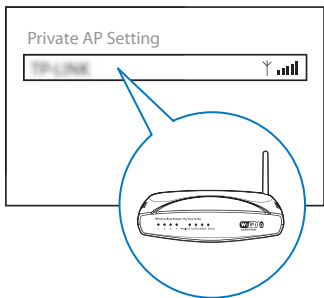
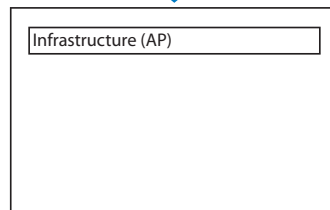
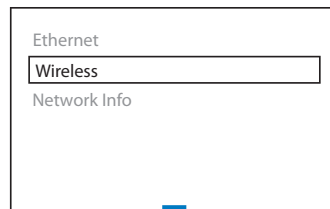
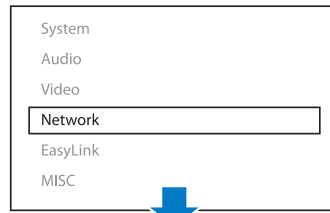
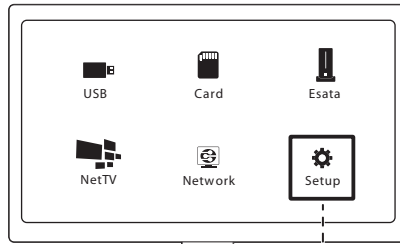
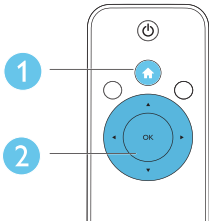


USB



SD







Contents

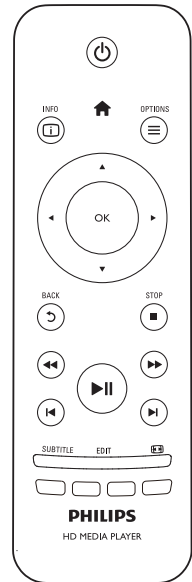
1	Control and play	10
2	Play options	11
	Video options	11
	Audio option	11
	Photo options	12
3	File browsing	13
	Browse all files	13
	Browse movie files	14
	Browse music files	15
	Browse photo files	16
4	Manage files	17
	Basic operations	17
5	Set up a network	19
	Wireless network setup	19
	Wired network setup	20
	IP address setup	21
6	Play media files from a computer (DLNA)	22
7	Play a 3D media file	23
	2D to 3D conversion	23
8	Net TV	24
	Manage your applications	24
9	Other setup	26
	System	26
	Audio	27
	Video	27
	Network	27
	MISC	27
10	EasyLink	29

11 Update software	30
Update software through the Internet	30
Update software through USB	30
12 Troubleshooting	31
13 Specification	32

1 Control and play

Use your remote control to control the play.

Function	Buttons / Actions
Stop the play.	■
Pause or resume the play.	▶
Skip to the previous/ next media file.	◀ /▶
Return to the home page.	🏠
Zoom in or out.	Press  repeatedly. • To pan through an enlarged photo, press ▲▼◀▶.
Search backward/forward fast.	Press ◀◀/▶▶ repeatedly to select a speed.
Access subtitle settings.	字幕
Rotate a photo.	Press ▲ / ▼.
Navigate menus.	▲▼◀▶
Confirm a selection or entry.	OK
Access option menus during play or in the file list.	☰
Access the file editing menu in the file folder list.	编辑
Display current playback information.	
Return to the previous menu.	↶

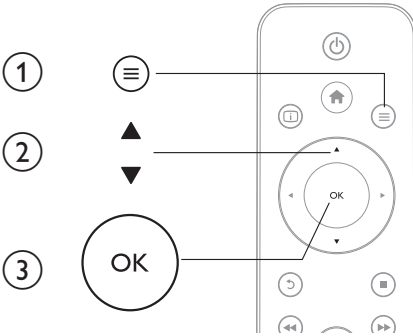


Note

- You can only play DivX videos that were rented or purchased with DivX® registration code in this player. (Refer to "Setup" > "MISC" > [DivX®VOD Code])
- Subtitle files with the following filename extensions (.srt, .smi, .sub, .ssa, .ass, .txt) are supported but not displayed in the file list.
- The subtitle filename has to be the same as the filename of the DivX video (the file extension excluded).
- The DivX video file and the subtitle file must be saved under the same directory.

2 Play options

During play, press **≡** to access the option items.



Video options

[Subtitle]: Adjust subtitle settings. Press **◀▶** to select an item and **▲▼** to adjust values. Then press **OK** to confirm.

[Audio]: Select an audio language.

[GOTO]: Skip play to the specific time. Press **◀▶** to select an item and **▲▼** to adjust values. Then press **OK** to confirm.

[Repeat Title]: Repeat the current title.

[Repeat All]: Repeat the movie file.

[Repeat Off]: Turn off a repeat mode.

≡ Note

- To use 3D related functions, connect this player to a 3D TV through an HDMI cable.

[2D]: Restore a video to 2D format.

[3D Simulation] (3D simulation): Convert a 2D video to 3D format.

[3D Side by Side] (3D side by side): Convert a video in side by side format to 3D format.

[3D Top Bottom] (3D top bottom): Convert a video in top and bottom format to 3D format.

[Video Setting]: Adjust the video settings. Press **▲▼** to select an item and **◀▶** to adjust values. Then press **OK** to confirm.

Audio option

[Repeat Off]: Turn off a repeat mode.

[Repeat One]: Repeat the current music file.

[Repeat All]: Repeat all the music files.

[Shuffle Loop]: Play music files in a random loop.

Photo options

[Slide Timing]: Set a display interval for a slideshow.

[Slide Transition]: Select a transition effect for a slideshow.

[Repeat Off]: Turn off a repeat mode.

[Repeat All]: Repeat all the photo files.

[Shuffle Loop]: Play photo files in a random loop.

[Background Music]: Select and play a music file during slideshow.



Note

- To use 3D related functions, connect this player to a 3D TV through an HDMI cable.

[2D]: Restore a photo to 2D format.

[3D Auto] (3D Auto): Convert a 2D photo to 3D format.

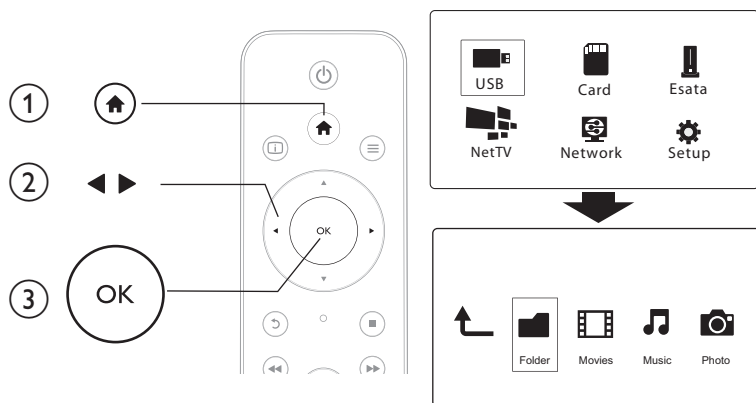
[3D Side by Side] (3D side by side): Convert a photo in side by side format to 3D format.


[3D Top Bottom] (3D top bottom): Convert a photo in top and bottom format to 3D format.

[Video Setting]: Adjust the video settings.

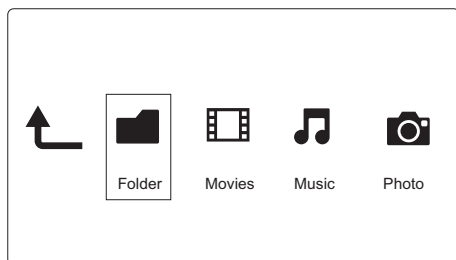
3 File browsing



You can browse media files stored in a USB/SD storage device.



- 1 Press .
- 2 Select [USB]/ [Card] / [Esata].
- 3 Select a mode to browse media files.
 - [Folder]
 - [Movies]
 - [Music]
 - [Photos]

Browse all files



- 1 Press  to select [Folder] and press **OK** to confirm.
- 2 Select your USB/SD storage device and press **OK**.
- 3 Press  in the file browser.

4 Press ▲ / ▼ to select a mode to view or arrange files.

[Thumbnails]: Display thumbnails of files or folder.

[List]: Display files or folder in a list.

[Preview]: Display files or folders with a preview window.

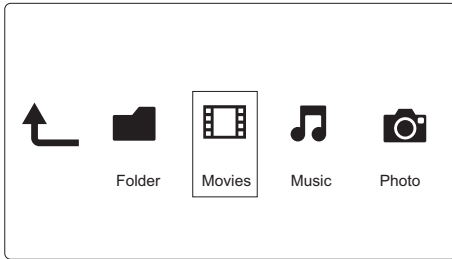
[All Media] Display all media files.

[Movies]: Display movie files.

[Photos]: Display photo files.

[Music]: Display music files.

Browse movie files



1 Press ◀▶ to select **[Movies]** and press **OK** to confirm.

2 Press ≡ in the file browser.

3 Press ▲ / ▼ to select a mode to view or arrange files.

[Search]: Search movie files. Follow on screen instruction to type in key words in the mini keyboard and press ▶|| to start search.

[Thumbnails]: Display thumbnails of movie files.

[List]: Display movie files in a list.

[Preview]: Display files or folders with a preview window.

[All Movies]: Display all movies files.

[Show DVDs]: Display all DVD content files.

[Flash Animation]: Display all flash files.

[Go to Folder]: Go to the folder where the selected file is placed.

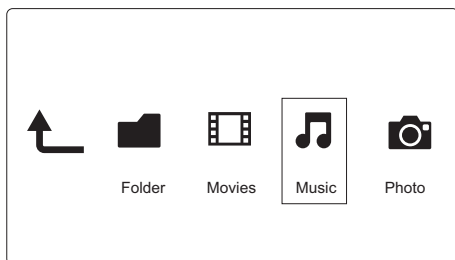
[Name]: List movies files in an alphabetical order of their names.

[Size]: List movies files in the ascending order of their sizes.

[Most Viewed]: List most viewed movie files.

[Recently Added]: List recently added movie files.

Browse music files



1 Press ◀▶ to select **[Music]** and press **OK** to confirm.

2 Press ≡ in the file browser.

3 Press ▲ / ▼ to select a mode to view or arrange files.

[Search]: Search music files. Follow on screen instruction to type in key words in the mini keyboard and press ▶|| to start search.

[Thumbnails]: Display thumbnails of music files.

[List]: Display music files in a list.

[Preview]: Display music files with a preview window.

[Go to Folder]: Go to the folder where the selected file is placed.

[All Songs]: Display all music files.

[Albums]: Display music files by albums.

[Artists]: Display music files by artists.

[Genres]: Sort music files by genres.

[Years]: Sort music files by years.

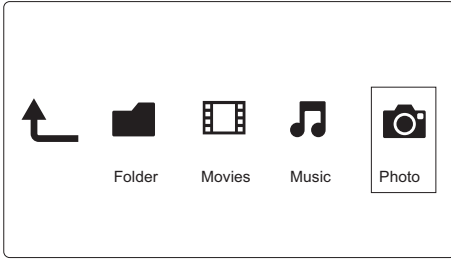
[Playlists]: Display play lists.

[Recently Played]: List recently played music files.

[Recently Added]: List recently added music files.

[Name]: List music files in an alphabetical order of their names.

Browse photo files



- 1 Press ◀▶ to select **[Photos]** and press **OK** to confirm.
- 2 Press ≡ in the file browser.
- 3 Press ▲ / ▼ to select a mode to view or arrange files.

[Search]: Search photo files. Follow on-screen instruction to type in key words in the mini keyboard and press ▶|| to start search.

[Thumbnails]: Display thumbnails of photo files or folder.

[List]: Display files or folder in a list.

[Preview]: Display files or folders with a preview window.

[Photo Directory]: Display photo files in the directory mode.

[Leaf Folder View]: Display photo files in the folder mode with a preview of a contained photo.

[Date view]: Sort photo files by date modified.

[All Photos]: Display all photos files.

[Albums]: Sort photo files by albums.

[Name]: List photo files in an alphabetical order of their names.

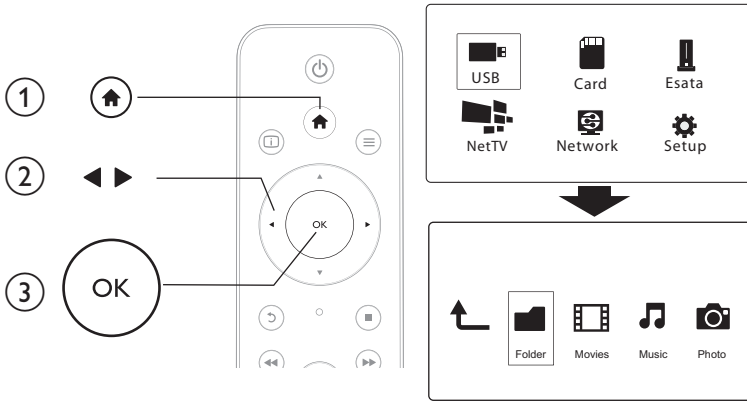
[Recently Added]: List recently added photo files.

[Recently Played]: List recently played photo files.

4 Manage files

You can manage media files on the storage device.

Basic operations



- 1 Press **Home**.
- 2 Select **[USB]/ [Card] / [Esata] >[Folder]**.
- 3 Select a partition of your USB/SD storage device and press **OK**.
- 4 Press **▲ / ▼** to select a file or folder and press **[Edit]**.
↳ The file editing menu is displayed.
- 5 Press **▲ / ▼** to select your operation and press **OK** to confirm.
 - [Copy]:** Select a destination and press **▶▶▶** to confirm.
↳ The selected file or folder is copied to the destination.
 - [Delete]:** Select **[Yes]** and press **OK** to confirm.
↳ The selected file or folder is deleted.
 - [Move]:** Select a destination and press **▶▶▶** to confirm.
↳ The selected file or folder is moved to the destination.

[Rename]

- 1 Select **[Rename]** to edit the name in the mini keyboard, and then press **▶▶▶** to confirm.
- 2 Select **[OK]** and press **OK** to apply the new name.

[Multiple Select]

- 1 Press ▲ / ▼ to select a file or folder and press ►|| to add to the list.
- 2 Press [Edit] when you complete adding files and folders.
- 3 Select an operation.

[Copy] Select the destination and press ►|| to confirm.

[Delete] Select [Yes] and press OK to delete the selected files or folders.

[Move] Select the destination and press ►|| to confirm.

[Save Playlist]

- Select [OK] to save a play list.
- Select [Rename] to edit the name in the mini keyboard, and then press ►|| to confirm.

[Save Photo Album]

- Select [OK] to save a photo album.
- Select [Rename] to edit the name in the mini keyboard, and then press ►|| to confirm.



Note

- Press and hold ■ for two seconds to remove a connected storage device safely.

5 Set up a network

By connecting this player to a computer network and the Internet, you can

- Play photos, music, and video files streamed from your computer.
- Watch online TV programs.
- Browse Internet photo albums.
- Update the software of this player through the Internet.

Wireless network setup

What you need A wireless router that is connected to the Internet

- 1 Connect this player to a computer network or the Internet through a wireless router.



- 2 Perform the wireless network installation.

To connect this player to a wireless network,

- 1 Press **⏠**.
- 2 Select **[Setup]** and press **OK**.
↳ The setup menu is displayed.
- 3 Select **[Network]>[Wireless] > [Infrastructure (AP)]** and press **OK**.
↳ A list of available wireless networks is displayed.
- 4 Select your network from the list and press **OK**.
- 5 Select **[Standard (WPA,WEP...)]** and press **OK**.
↳ A mini keyboard is displayed.
- 6 Use **▲▼◀▶** and **OK** to enter your Wi-Fi Protected Access (WPA) or Wired Equivalent Privacy (WEP) key.
- 7 Press **▶||** to confirm.
↳ A connection test is started
↳ The status of network connection is displayed after the test is completed.

8 Press **OK** to exit.

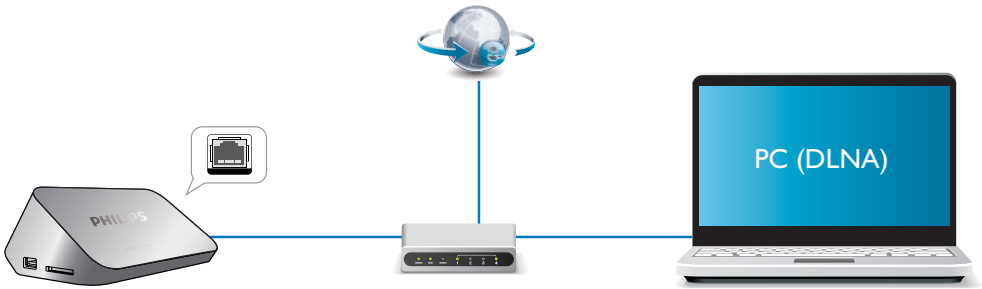
 Note

- To re-scan available wireless networks, press .

Wired network setup

What you need A wired router that is connected to the Internet

1 Connect this player to a computer network or the Internet through a wired router.



2 Perform the network installation.

To connect this player to a wired network,

- 1 Press **⏠**.
- 2 Select **[Setup]** and press **OK**.
↳ The setup menu is displayed.
- 3 Select **[Network] > [Ethernet] > [DHCP IP (AUTO)] > [DHCP (AUTO)]** and press **OK**.
↳ A dialog box is displayed.
- 4 Select **[Yes]** and press **OK** to save the network settings .
↳ A connection test is started.
↳ The status of network connection is displayed after the test is completed. .
- 5 Press **OK** to exit.

IP address setup

You can set the IP address manually.

- 1 Select **[Network] > [Ethernet] > [FIX IP (MANUAL)]**.
↳ The IP address table is displayed.
- 2 Press **◀▶** to select a item and press **▲▼** to adjust the value.
- 3 Press **OK** when you complete setting the IP address.
↳ A dialog box is displayed.
- 4 Select **[Yes]** and press **OK** to save the network settings.



6 Play media files from a computer (DLNA)

With this DLNA-certified player connected to a computer network, you can play video, music, and photo from a computer.



Note

- To browse media files on a PC, make sure that a DLNA media server software (such as Windows Media Player 11 or higher) is installed on the PC.

- 1 Connect this player to a computer network (see "Set up a network").
- 2 On the PC, in the software of the DLNA media server (such as Windows Media Player 11 or higher), you need to set:
 - Share your media to this player (see "Help" document in the media server software).
 - Share files or add files to the library (see "Help" document in the media server software).
- 1 Press .
- 2 Select **[Network]**, and press **OK**.
 - ↳ A content browser is displayed.
 - To browse shared folders of a PC, select **[Shared Folder]** and press **OK**.
 - To browse shared media files, select **[Shared Media Files]** and press **OK**.
- 3 Select a media file, and press **OK** to play.
 - To access the menu of browsing options, press .
 - For details, see "Browse all files".

7 Play a 3D media file

Before you start, make sure that:

- the TV is 3D compliant, and is connected to this player through HDMI
- your USB/SD storage device contains 3D media files
- you have 3D glasses compatible with the TV.

1 Select and play a 3D media file.

2 Press .

↳ An option menu is displayed.

3 Select a 3D conversion option.

- For 3D media files in side by side format, select **[3D Side by Side]** (3D side by side).
- For 3D media files in top and bottom format, select **[3D Top Bottom]** (3D top bottom).

4 Put on the 3D glasses for 3D effects.

- To exit, press  and select **[2D]**.

2D to 3D conversion

You can convert a 2D media file to 3D format and watch it on your 3D TV.

1 Select and play a 2D media file.

2 Press .

↳ An option menu is displayed.

3 Select a 2D conversion option.

- For 3D video files, select **[3D Simulation]** (3D simulation).
- For 3D photo files, select **[3D Auto]** (3D auto).

4 Put on the 3D glasses for 3D effects.

- To exit, press  and select **[2D]**.


8 Net TV




With this player, you can access online various services, such as movies, pictures, music, and games.

 Note

- For optimal performance of Internet services, we recommend an internet connection speed of at least 1Mbps or above.

What you need Connect this player to the Internet. (see “Set up a network”).

- 1 Press .
- 2 Select **[Net TV]** and press **OK**.
 - ↳ The registration page is displayed.
- 3 Follow the on-screen instruction to complete registration.
 - ↳ The Net TV page is displayed.
- 4 Select an application service.
 - To get a quick guide on the Net TV, select **[Quick Guide]**.
- 5 Follow the on-screen instruction and use your remote control to enjoy.

Function	Button/Action
Select a service or item.	
Confirm a selection.	OK
Return to a previous page, or delete input text.	
Access service options on the screen.	Color key
Return to the home page.	

Manage your applications

You can add applications from the application gallery.

To add an application,

- 1 Select **[App Gallery]**.
↳ The application list is displayed.
- 2 Select an application and press **OK**.
↳ The option menu is displayed.
- 3 Select **[Add]** and press **OK**.
↳ The selected application is added to home page of Net TV.

You can remove, lock, or move applications on the home page of Net TV.

To remove an application,

- 1 Select an application and press **≡**.
↳ The option menu is displayed.
- 2 Select **[Remove App]**.
↳ The selected application is removed.

To lock an application,

- 1 Select an application and press **≡**.
↳ The option menu is displayed.
- 2 Select **[Lock App]**.
↳ The application locking page is displayed.
- 3 Follow the on-screen instruction and use your remote control to enter password.
↳ The selected application is locked.

To move an application,

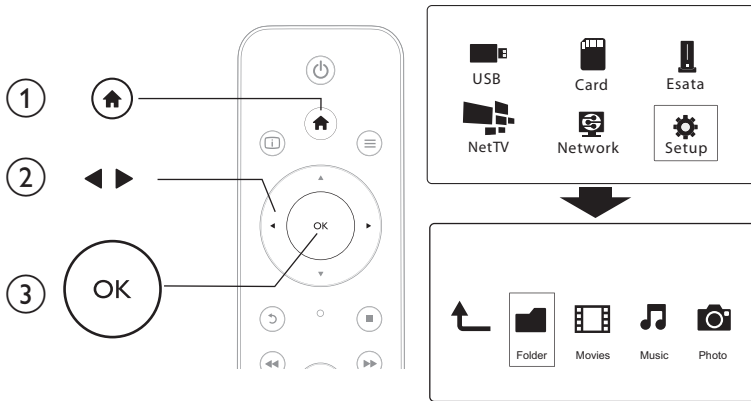
- 1 Select an application and press **≡**.
↳ The option menu is displayed.
- 2 Select **[Move App]**.
- 3 Select the place where you want to move the application and press **OK**.
↳ The selected application is moved to the specified place.

To view security information about an application,

- 1 Select the application and press **≡**.
↳ The option menu is displayed.
- 2 Select **[Security Info]**.
↳ The security information is displayed.

9 Other setup

You can change settings of this player in the setup menu.



- 1 Press **Home**.
- 2 Select **[Setup]** and press **OK** to confirm.
 - ↳ The setup menu is displayed.
 - Press **▲ / ▼** to select a menu item or setting option.
 - Press **OK** to access the lower-level menu.
 - Press **↶** to return to the upper-level menu.

System

[Menu Language]: Select a language for on-screen menu.

[Subtitle]: Select a subtitle language for video.

[Screen Saver]: Enable the screen saver in case of inactivity (for example, in pause or stop mode).

[DLNA DMR]: Enable this player to play photos, music, and video files streamed from your computer.

[Device Name]: Change the name of this player.

[Auto Scan]: Scan media files on a storage device automatically.

[Scan Storage]: Start or stop scanning media files on a storage device.

[Resume Play]: Resume playback of a video file from the point where you last stopped.

[Factory Default]: Reset all settings to factory default.

Audio

[Night Mode]: Equalize loud sound and soft sound. If enabled, you can watch movies at a low volume at night.

[HDMI Output]: Select an output sound format when connecting the HDMI jack.

[SPDIF Output]: Select an output sound format when connecting the digital audio jack.

Video

[Aspect Ratio]: Select display aspect ratio.

[TV System]: Select a video resolution setting that best is supported by your TV. See your TV manual for details.



Note

- If a selected video resolution is not supported with your TV and a blank screen appears, wait for 30 seconds to recover picture display.
- For a composite (CVBS) connection, if no video output is made when you set the video resolution is to an HD resolution (1080p, 1080i, 720p), connect this player to the TV with an HDMI connection to play HD videos.

[Video Zoom]: Zoom in or out video scenes.

[1080P 24Hz]: Use 1080p 24Hz video output mode for video content.



Note

- The video resolution and the frame rate of the video content is 1080p 24Hz.
- Your TV supports the 1080p 24Hz.
- Ensure that you use an HDMI cable to connect this player to your TV.

[Deep Color]: Display colors with more shades and hues when the video content is recorded in Deep Color mode and the TV supports this feature.

[Video Setting]: Adjust the video settings.

Network

[Ethernet]: Configure the IP address of this player.

[Wireless]: Set up a wireless network connection.

[Network Info]: Display the current network status.

[Clear Net TV Memory]: Clear the history of Net TV browser (such as cookies).

MISC

[**Version Info**]: Display the information about software version of this player.

[**DivX® VOD Code**]: Display the DivX® registration code and deregistration code.

[**Online upgrade**]: Select to update software from a network.

[**USB upgrade**]: Select to update software from USB storage device.

10 EasyLink

This player supports Philips EasyLink which uses the HDMI CEC (Consumer Electronics Control) protocol. You can use a single remote control to control EasyLink compliant devices that are connected through HDMI.

- 1 Connect the HDMI CEC compliant devices through HDMI, and turn on the HDMI CEC operations on the TV and other connected devices (see the user manual of the TV or other devices for details).
- 2 Press **⬆**.
- 3 Select **[Setup] > [Easy Link]**.
- 4 Select **[On]** under the options:
 - **[Easy Link] > [On]**
 - **[One Touch Play] > [On]**
 - **[One Touch Standby] > [On]**
 - **[Auto Power On From TV] > [On]**
 ↳ EasyLink function is turned on.

One Touch Play

When you play a file with this player, the connected HDMI CEC TV automatically switches to the HDMI input channel.

One Touch Standby

When you switch a connected device (for example TV) to the standby mode with its own remote control, this player switches to the standby mode automatically.

Auto Power On From TV

When you switch a connected device (for example TV) to this player port with its own remote control and this player is standby mode, this player switches to the power on mode automatically.




Note


- Philips does not guarantee 100% interoperability with all HDMI CEC devices.

11 Update software

Before you update the software of this player, check the current software version:

- 1 Press .
- 2 Select [Setup] > [MISC] > [Version Info.], and press OK.

Update software through the Internet



- 1 Connect the player to the Internet (see "Set up a network").
- 2 Press , and select [Setup].
- 3 Select [MISC] > [Online upgrade].
 - ↳ If an upgrade media is detected, you are prompted to start the update.
- 4 Follow the instructions on the TV screen to update the software.
 - ↳ When the update is complete, this player automatically turns off and on again.

Update software through USB



Note

- Do not turn off the power or remove the USB storage device when the software update is in progress because you might damage this player.

- 1 Check the latest software version on www.philips.com/support.
 - Search for your model and click on "Software and drivers".
- 2 Download the software to the root directory of a USB storage device.
- 3 Connect the USB storage device to the  (USB) connector on this player.
- 4 Press .
- 5 Select [Setup] > [MISC] > [USB upgrade].
 - ↳ If an upgrade media is detected, you are prompted to start the update.
- 6 Follow the instructions on the TV screen to update the software.
 - ↳ When the update is complete, this player automatically turns off and on again.

12 Troubleshooting

If you contact Philips, you will be asked for the model and serial number of this player. The model number and serial number are at the bottom of this player. Write the numbers here:

Model No. _____

Serial No. _____

No picture.

- Refer to the TV user manual for how to select the correct video input channel

No sound output from the TV.

- Make sure that the audio cables are connected to the audio input sockets that are grouped with the selected video input sockets.

The contents of the USB storage device cannot be read.

- This player supports only USB 2.0 and USB 1.1 storage devices. USB 3.0 storage devices are not supported.
- The supported memory size is 1TB maximum.
- Make sure that this player supports these files. (Refer to "**Specifications**" > "**File**")
- DRM-protected video files that are stored on a USB/SD storage device cannot be played through an analog video connection (for example, composite). You need to use an HDMI connection to play these files.

Some hard disks cannot be supported.

- This player supports hard disks with rating 500 mA or below. Please check if your hard disk rating is above 500 mA.


My router cannot connect this player after this player is powered on.

- Restart your router to connect it to this player.

DivX subtitles are not displayed correctly.

- Make sure that the subtitle filename is the same as the video filename.
- Make sure that the DivX video file and the subtitle file are saved under the same directory.

Some wireless routers cannot be found.

- Press ▲ / ▼ to browse all the wireless routers in range in the wireless network list.
- Press  to rescan all available wireless routers.

The player feels warm.

- When this player is in use for a long period of time, some parts of this player will be heated. This is normal.

13 Specification



Note

- Specification and design are subject to change without notice.

File

- Video: MPEG 1/2/4(MPEG 4 Part 2), H.264, VC-1, H.263, VP6(640 × 480), DivX Plus HD, DivX 3/4/5/6, Xvid, WMV (V9), AVI, TS, M2TS, TP, TRP, ISO, VOB, DAT, MP4, MPG, MOV (MPEG 4, H.264), ASF, FLV(640 × 480), MKV, M4V
- Audio: Dolby digital, AAC, RA, OGG, MKA, MP3, WAV, APE, FLAC, DTS, LPCM, PCM, WMA (V9), IMA/MS ADPCM, WMA pro
- Picture: JPEG, JPG, PNG, TIFF, GIF (unanimated GIF), BMP, TIF, M-JPEG, HD-JPEG

USB storage device

- Compatibility: Hi-Speed USB (2.0)

Subtitle support

- .srt, .sub, .smi, .ssa, .ass, .txt, .psb, .idx+.sub

SD card

- Compatibility: SDHC 2.0 (up to 32 GB)

Video

- Signal system: PAL /NTSC
- Composite video output: 1 Vpp ~ 75 ohm
- HDMI output: 480i, 480p, 576i, 576p, 720p, 1080i, 1080p, 1080p24

Audio

- Analog stereo output
- Signal to noise ratio (1 kHz): > 90 dB (A-weighted)
- Dynamic Range (1 kHz): > 80 dB (A-weighted)
- Frequency response: +/-0.2 dB
- Digital output: Optical

Main Unit

- Dimensions (L × W × H): 178 × 57.5 × 91 mm
- Net Weight: 0.34 Kg
- Input: 240V~ 50Hz, 10W

Power

- Power consumption: < 10W
- Power consumption in standby mode: < 0.5 W

Operating Temperature & Humidity

- 0°C to 40°C, 5% to 90% Humidity for all climates.

Storage Temperature & Humidity

- -40 °C to 70 °C, 5% to 95%

USB specification

- USB drive current: DC 5V = 500 mA



Specifications are subject to change without notice
© 2011 Koninklijke Philips Electronics N.V.
All rights reserved.

HMP7000_05_UM_V1.0

