

Philips  
Mini Hi-Fi System

CD playback

FWC143



## Rich sound experience

Set your sights on the attractive FWC143 Mini Hi-Fi System, which delivers superbly rich sound. You'll appreciate how easy it is to operate and control, just sit back, relax and enjoy your music all day, your way!

### Enrich your sound experience

- 2 x 10 W RMS/2 x 20 W music power
- Full range Bass Reflex Speaker System

### Continuous enjoyment of your favourite music

- AM/FM tuner
- Stereo cassette deck
- Plays CD, CD-R and CD-RW discs

### Personalised sound settings

- Digital Sound Control for optimised music style settings
- Dynamic Bass Boost for deep and dramatic sound

**PHILIPS**  
sense and simplicity

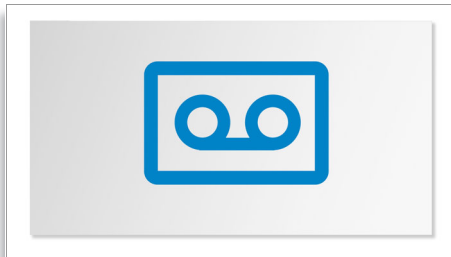
# Highlights

## AM/FM tuner



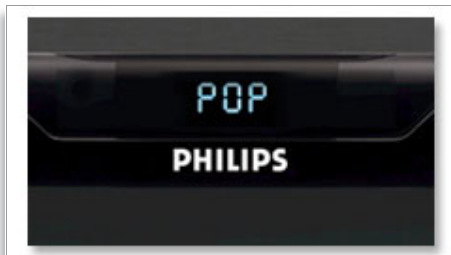
AM/FM tuner

## Stereo cassette deck



Stereo cassette deck

## Digital Sound Control



Digital Sound Control offers you a choice of pre-set Jazz, Rock, Pop and Classical controls you can use to optimise the frequency ranges for different musical styles. Each mode uses graphic equalizing technology to automatically adjust the sound balance and enhance the most important sound frequencies in your chosen music style. Ultimately, Digital Sound Control makes it easy for you get the most out of your music by precisely adjusting the sound balance to match the type of music you are playing.



## Dynamic Bass Boost



Dynamic Bass Boost maximises your music enjoyment by emphasising the bass content of the music throughout the range of volume settings - from low to high - at the touch of a button! Bottom-end bass frequencies usually get lost when the volume is set at a low level. To counteract this, Dynamic Bass Boost can be switched on to boost bass levels, so you can enjoy consistent sound even when you turn down the volume.

**2 x 10 W RMS/2 x 20 W music power**  
2 x 10 W RMS/2 x 20 W music power

## Full range Bass Reflex Speaker



Bass Reflex Speakers delivers a deep bass experience. Differ from conventional loudspeakers, the addition of a bass pipe that is acoustically aligned to the woofer optimises the low frequency roll-off. The result is a deep controlled bass and low distortion. Combined with the response of the woofer, it extends the overall low frequency sounds to create a whole new dimension of deep bass.

**Plays CDs, CD-R and CD-RW**  
Plays CD, CD-R and CD-RW discs

# Specifications

## Sound

- Output power (RMS): 2 x 10 W RMS
- Sound Enhancement: Dynamic Bass Boost, Digital Sound Control

## Loudspeakers

- Main Speaker: 4" woofer, Bass Reflex Speaker System, Full range
- Number of Loudspeakers: 2

## Audio Playback

- Number of Discs: 1
- Loader Type: Tray
- Playback Media: CD, CD-R, CD-RW
- Disc Playback Modes: Next/Previous Track Search, Fast Forward/Reverse, Repeat Play, Shuffle Play
- Programmable Tracks: 20
- Number of decks: 1
- Cassette Deck Technology: Mechanical

## Audio Recording

- Recording Media: Tape
- Tape Recording Enhancement: CD Synchro-Start Recording, Automatic Recording Level

## Tuner/Reception/Transmission

- Tuner Bands: FM, FM Stereo, MW

## Connectivity

- Headphones: 3.5 mm

## Convenience

- Alarms: CD Alarm, Radio Alarm, Sleep timer
- Clock: On main display
- Display Type: LCD

## Accessories

- Included Accessories: Remote Control, Guarantee booklet
- User Manual: English

## Dimensions

- Set dimensions (W x H x D): 220 x 292 x 285 mm
- Speaker Width: 190 mm
- Speaker Height: 292 mm
- Speaker Depth: 182 mm
- Packaging dimensions (W x H x D): 510 x 350 x 416 mm
- Weight incl. Packaging: 9.333 kg

## Power

- Power supply: 200-240 V, 50 Hz



Issue date 2009-10-31

Version: 1.0.3

12 NC: 8670 000 40715  
EAN: 87 12581 43079 5

© 2009 Koninklijke Philips Electronics N.V.  
All Rights reserved.

Specifications are subject to change without notice.  
Trademarks are the property of Koninklijke Philips Electronics N.V. or their respective owners.

[www.philips.com](http://www.philips.com)