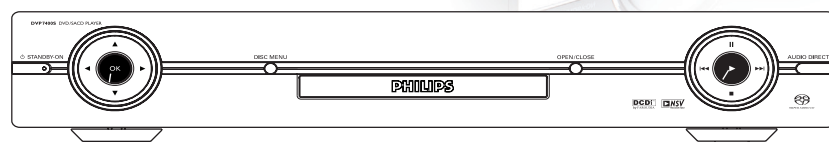


# Quick Start Guide

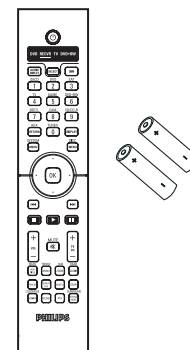
DVP 7400S  
DVD Video Player



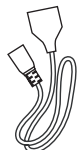
## What's in the box?



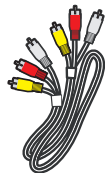
DVD Video Player



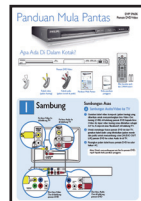
Remote Control  
and 2 AA batteries



Power cable



Audio (red & white plugs) and  
Video (yellow plugs) cables



Quick Start Guide



User Manual

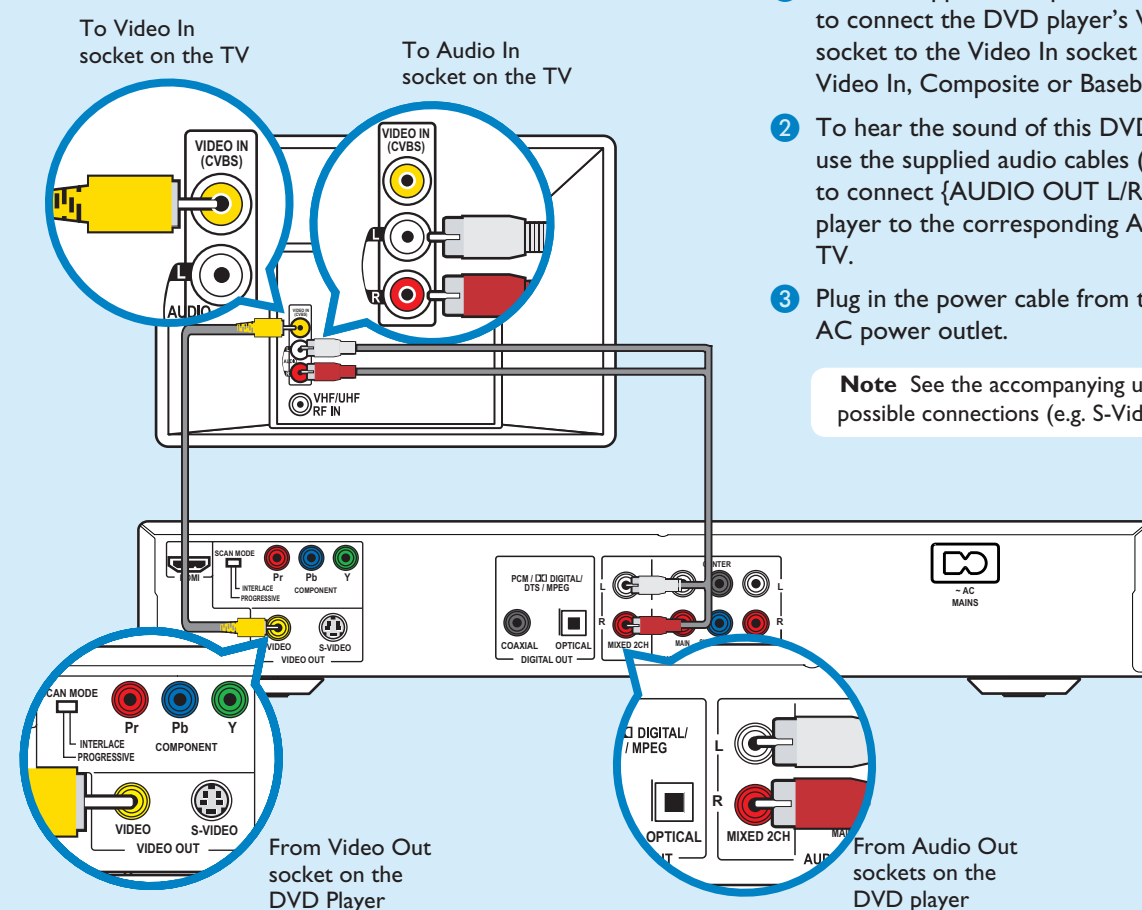
## 1 Connect

### Basic Connection

#### A Audio/Video connection to TV

- 1 Use the supplied composite video cable (yellow plug) to connect the DVD player's Video Out (CVBS) socket to the Video In socket (or labeled as A/V In, Video In, Composite or Baseband) on the TV.
- 2 To hear the sound of this DVD player from the TV, use the supplied audio cables (red and white plugs) to connect {AUDIO OUT L/R} sockets of the DVD player to the corresponding Audio In sockets on the TV.
- 3 Plug in the power cable from the DVD player to an AC power outlet.

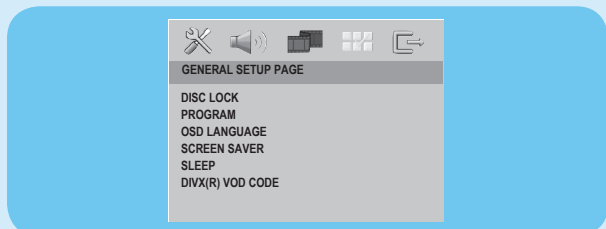
**Note** See the accompanying user manual for other possible connections (e.g. S-Video, Component Video).



## 2 Set up

### A Finding the viewing channel

- 1 Press **⏻** on the DVD player's remote control.
- 2 Press **SELECT** button until [DVD] is lighted on the remote control display panel.
- 3 Switch on the TV.
- 4 Press **SYSTEM MENU** on the DVD player's remote control.



- 5 Press '0' on the TV's remote control, then repeatedly press the Channel Down button until you see the DVD background screen. This is the correct viewing channel for the DVD player.

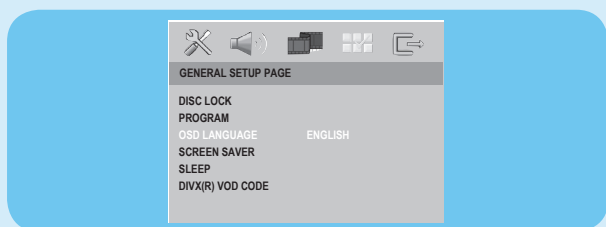
**Note** For some TVs, to find the correct viewing channel, you can keep pressing the AV or SELECT buttons. If still unable to find the correct viewing channel, check the connections again or check your TV's user manual.

### B Language preference setup

Use the DVD player's remote control to select the desired On-screen language, Audio language, Subtitle language and Menu language you preferred.

#### Selecting On-screen language

- 1 Press **▶** to select {General Setup Page}.
- 2 Press **▲ ▼** to highlight {OSD Language}, then press **▶**.



- 3 Press **▲ ▼** to select a language and press **OK**.

**Note** The On-screen language for the setup menu will remain once you set it, regardless of various disc languages.

### Need help?

#### User Manual

For more product information refer to the user manual of the DVD player

#### Online

Go to [www.philips.com/support](http://www.philips.com/support)



## 3 Enjoy

### A Start playback

- 1 Playback may start automatically when a disc has been loaded in the disc tray.

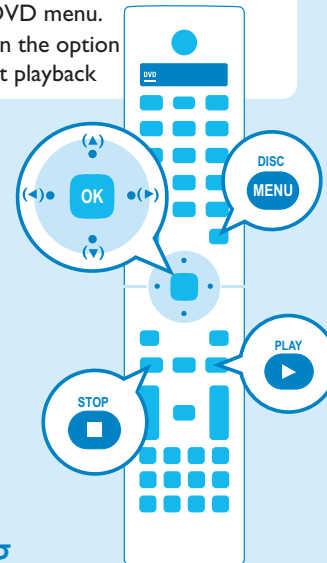
**Note** If a disc menu appears on the TV:

- 1) Press **▲ ▼ ◀ ▶** to scroll through the options available in the DVD menu.
- 2) Press **PLAY ▶** on the option you want to start playback

- 2 Press **PLAY ▶** to start playback.

- 3 To stop playback, press **STOP ■**.

- 4 Press **DISC MENU** to go back to the disc menu anytime.



### Troubleshooting

For more troubleshooting tips, see the user manual.

#### No power

- Check if the AC power cord is properly connected.
- Press the STANDBY-ON on the front of the DVD player to turn on the power.

#### No picture

- Check connection to TV and ensure the plugs are firmly in place.

#### No sound or distorted sound

- Adjust the volume
- Check audio connections are in the correct input source.

#### Remote control does not work

- Check the batteries are loaded correctly or replace the batteries with new ones.
- Reduce the distance between the remote control and the DVD player.
- Point the remote control directly toward the IR sensor.



2005 © Koninklijke Philips N.V.  
All rights reserved.  
12 NC 31 39 246 24061  
[www.philips.com](http://www.philips.com)  
SL/0631/98/93\_06/02