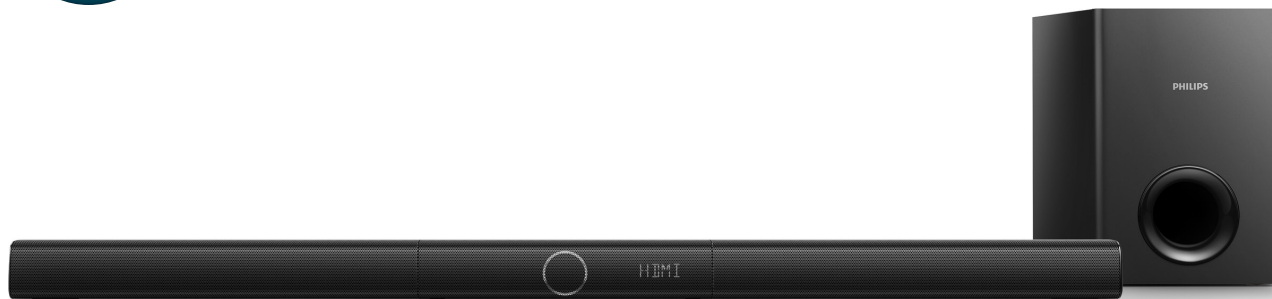


# Always there to help you

Register your product and get support at  
[www.philips.com/support](http://www.philips.com/support)



HTL2193B



## Quick start guide

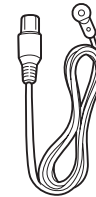
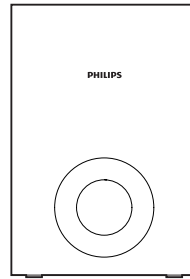
**PHILIPS**



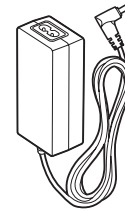
**EN** Before using your product, read all accompanying safety information

**MS-MY** Sebelum menggunakan produk anda, baca semua maklumat keselamatan yang disertakan

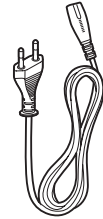
**TH** ก่อนใช้งานผลิตภัณฑ์ของคุณ โปรดอ่านข้อมูลด้านความปลอดภัยที่มีให้โดยละเอียด



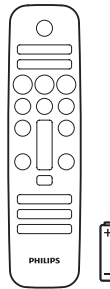
FM Antenna



Power Adapter



Power Cord



6 X



Optical Cable

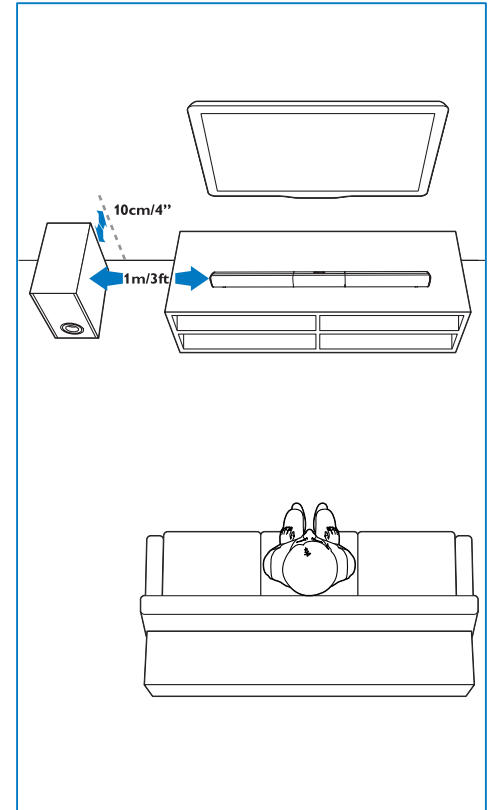
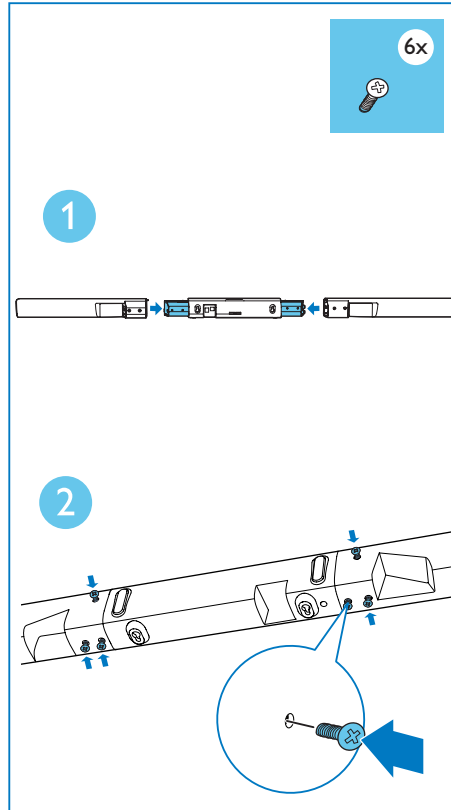


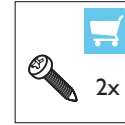
# 1

**EN** Assemble your product /  
Position your product

**MS-MY** Pasang produk anda /  
Letakkan kedudukan produk anda

**TH** ประกอบผลิตภัณฑ์ของคุณ /  
จัดวางผลิตภัณฑ์ของคุณ

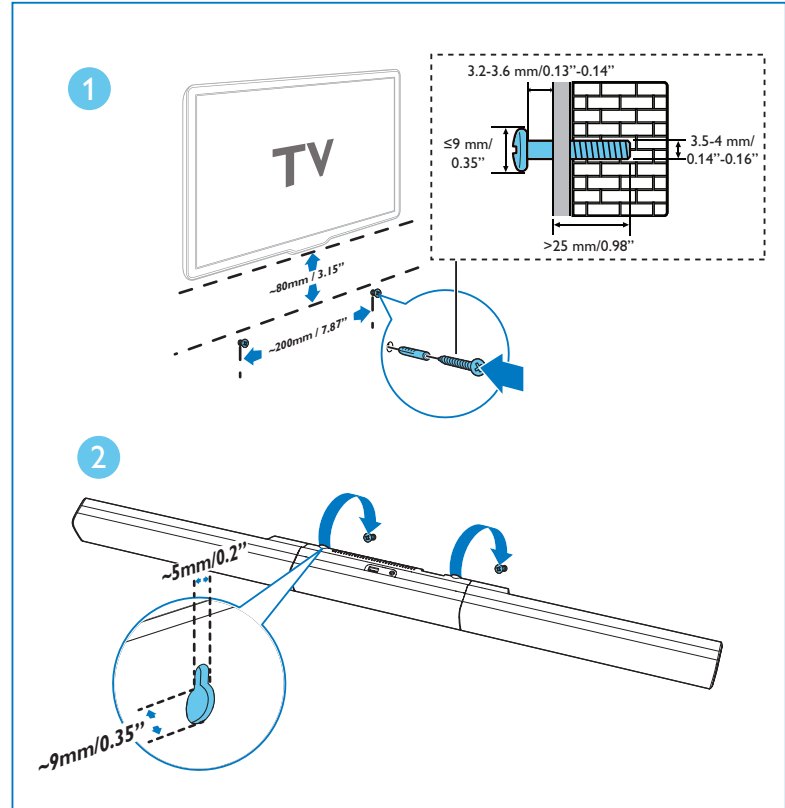




**EN** Wall mount your product (optional)

**MS-MY** Lekapkan produk anda dinding (pilihan)

**TH** ยึดผลิตภัณฑ์นี้เข้ากับผนัง (เลือกได้)

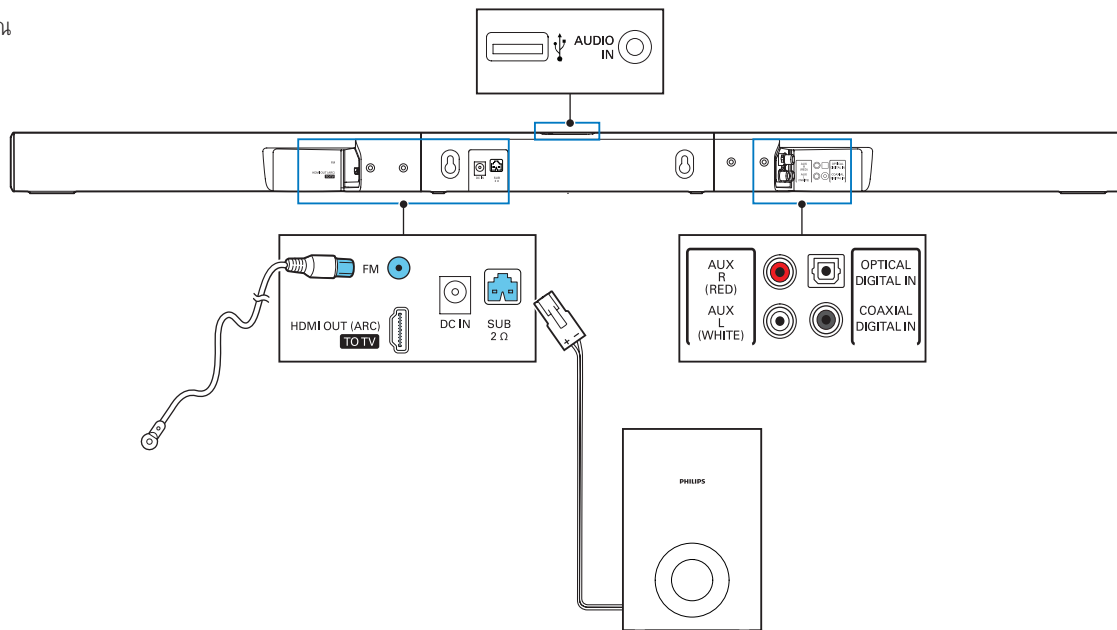


# 2

**EN** Connect your product

**MS-MY** Sambungkan produk anda

**TH** เชื่อมต่อผลิตภัณฑ์ของคุณ



# 3

**EN**

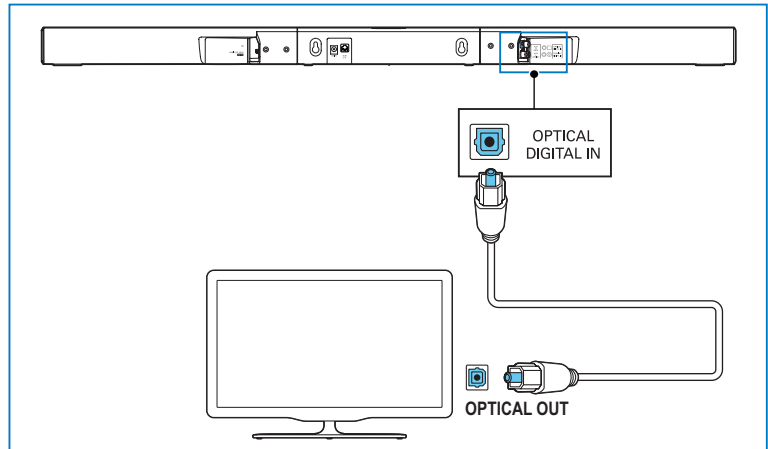
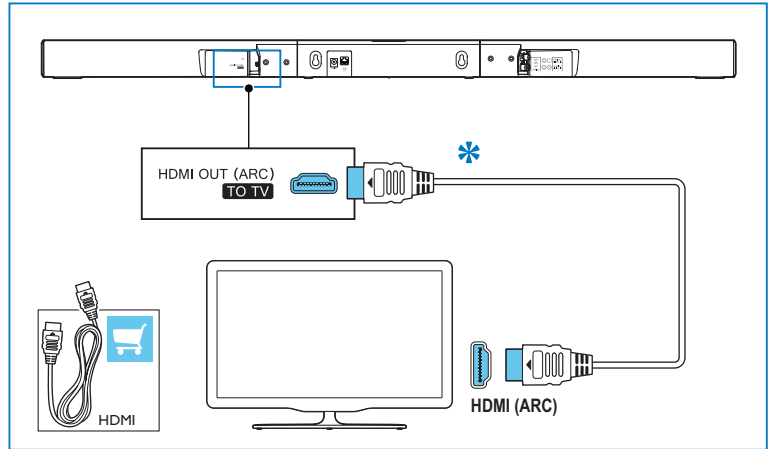
Connect to TV in one of these ways  
\* A High Speed HDMI Cable is required

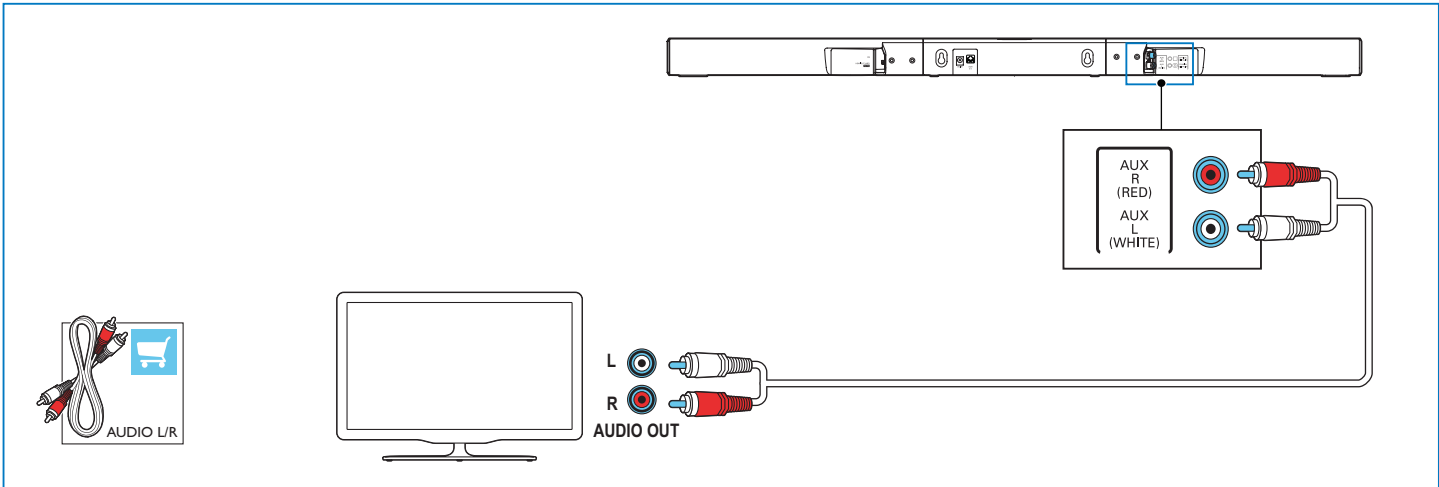
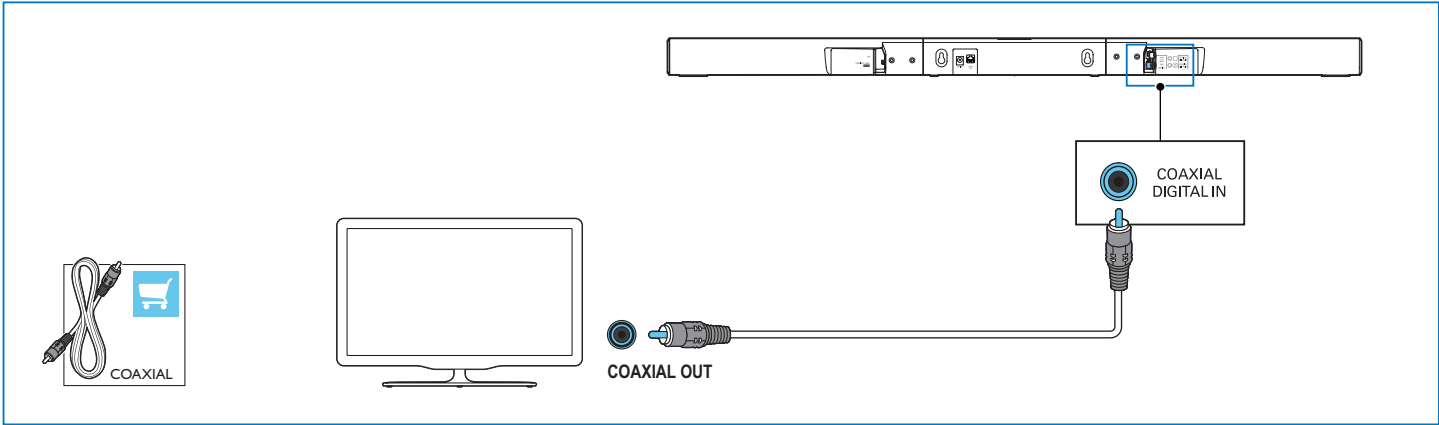
**MS-MY**

Sambung kepada TV dalam salah satu cara berikut  
\* Kabel HDMI Berkelajuan Tinggi diperlukan

**TH**

เชื่อมต่อทีวีด้วยวิธีใดวิธีหนึ่งดังนี้  
\* ต้องมีสายเคเบิล HDMI ความเร็วสูง



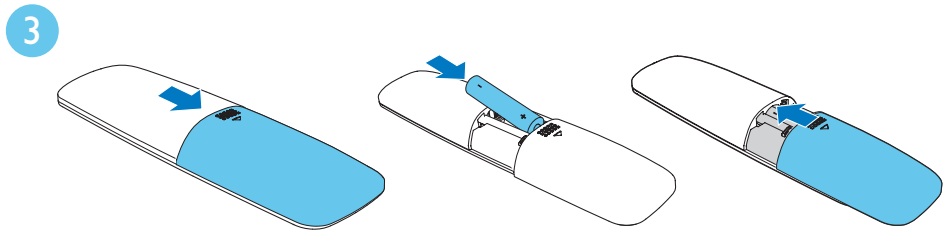
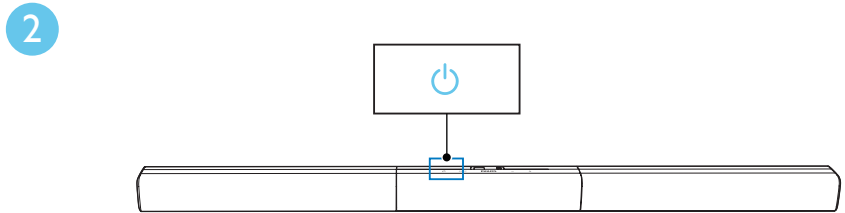
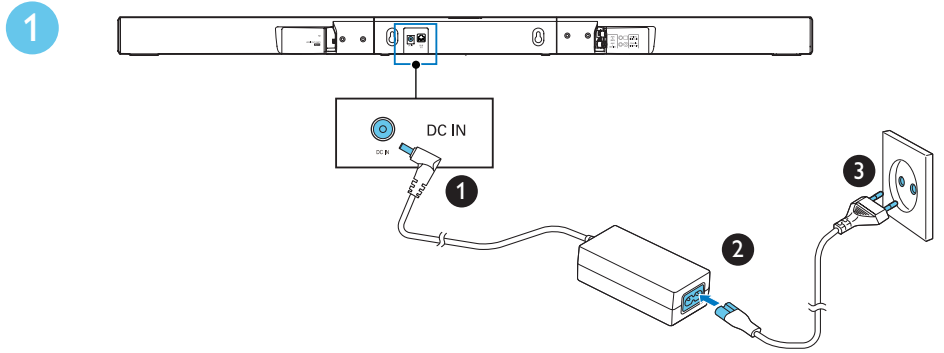


# 4

**EN** Switch on your product

**MS-MY** Hidupkan produk anda

**TH** เปิดการทำงานผลิตภัณฑ์ของคุณ



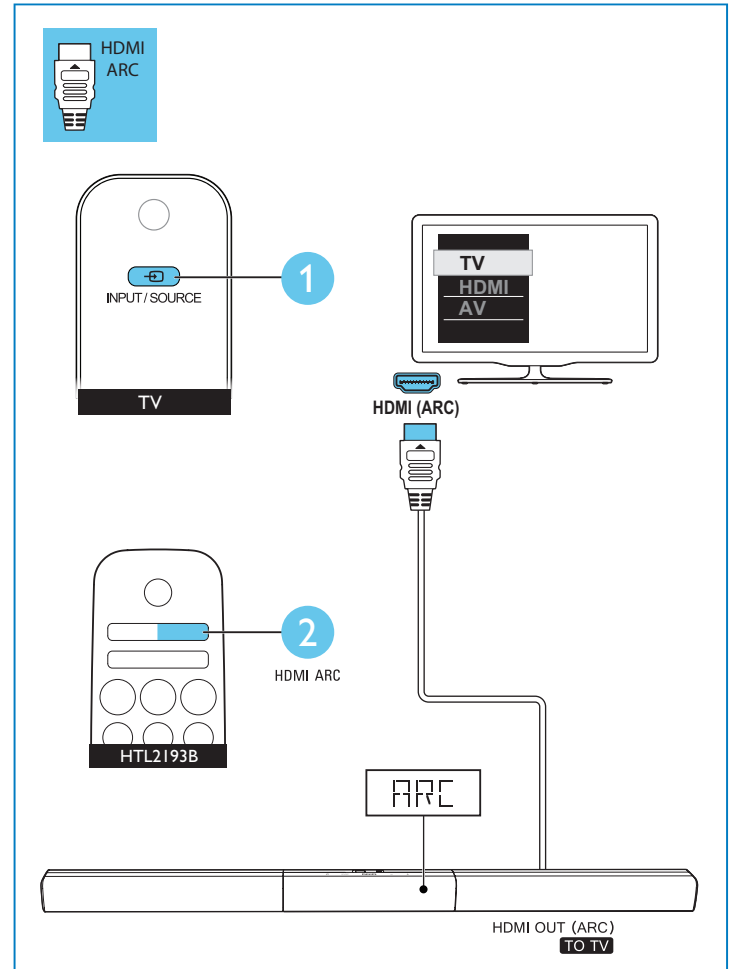


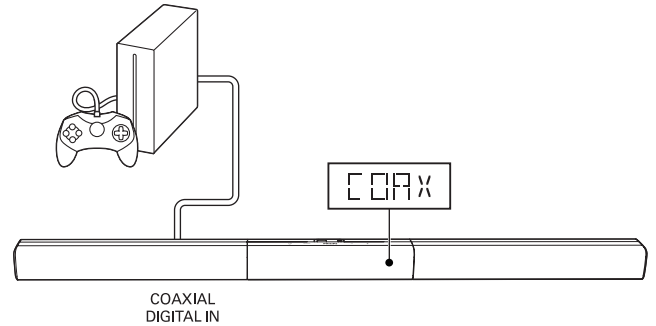
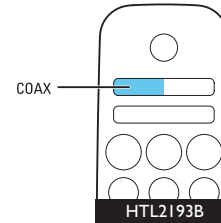
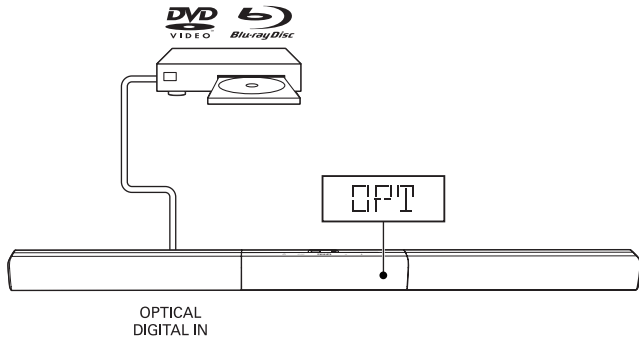
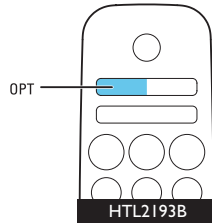
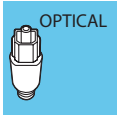
# 5

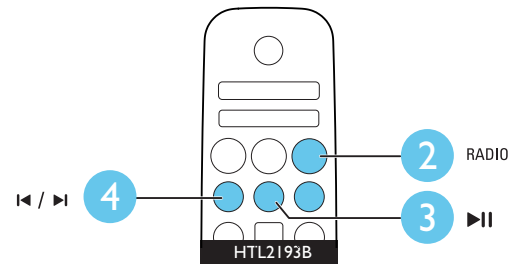
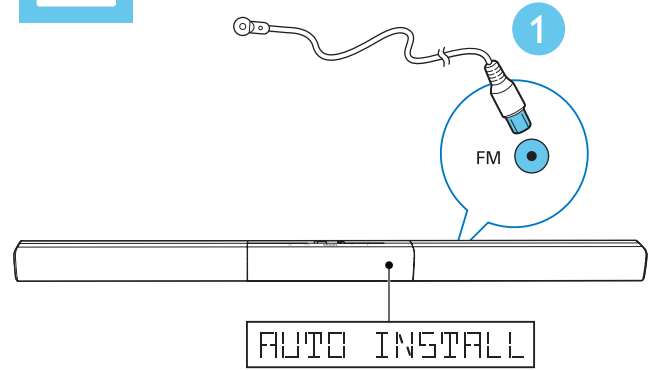
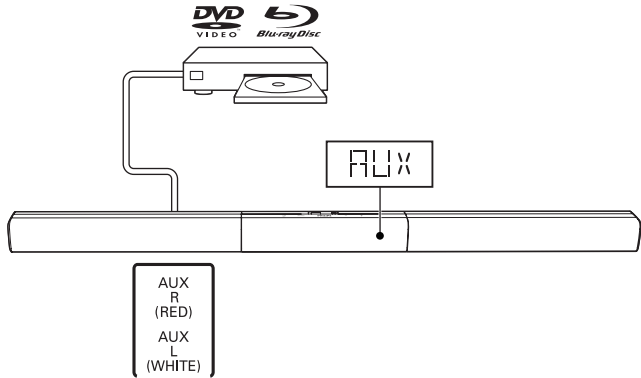
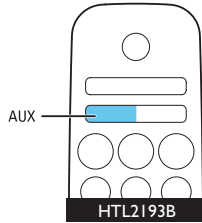
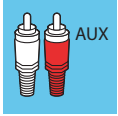
**EN** Select the correct audio source

**MS-MY** Pilih sumber audio yang betul

**TH** เลือกแหล่งเสียงที่ถูกต้อง





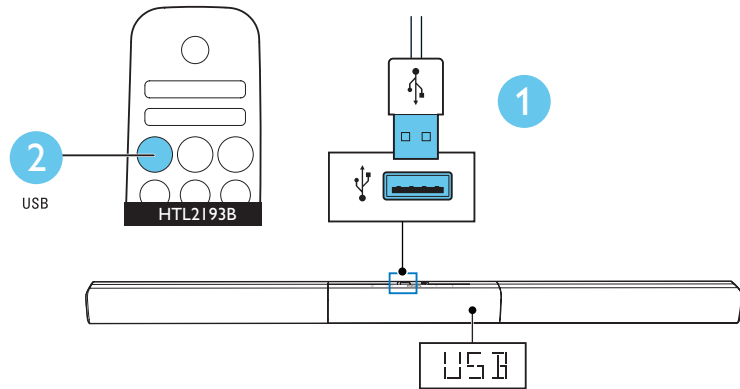
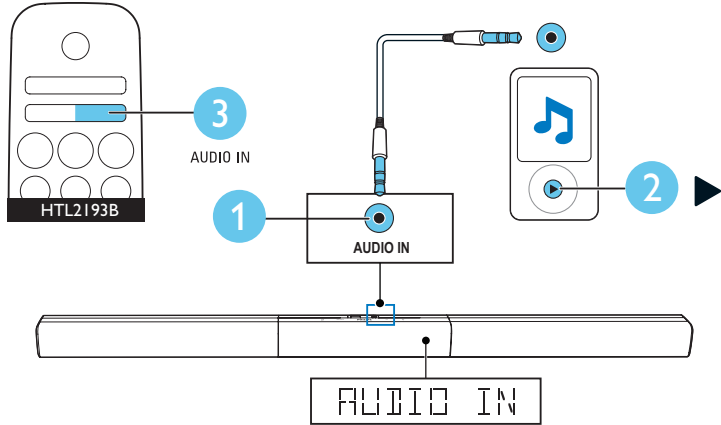


# 6

**EN** Play other devices

**MS-MY** Mainkan peranti lain

**TH** เล่นอุปกรณ์อื่น

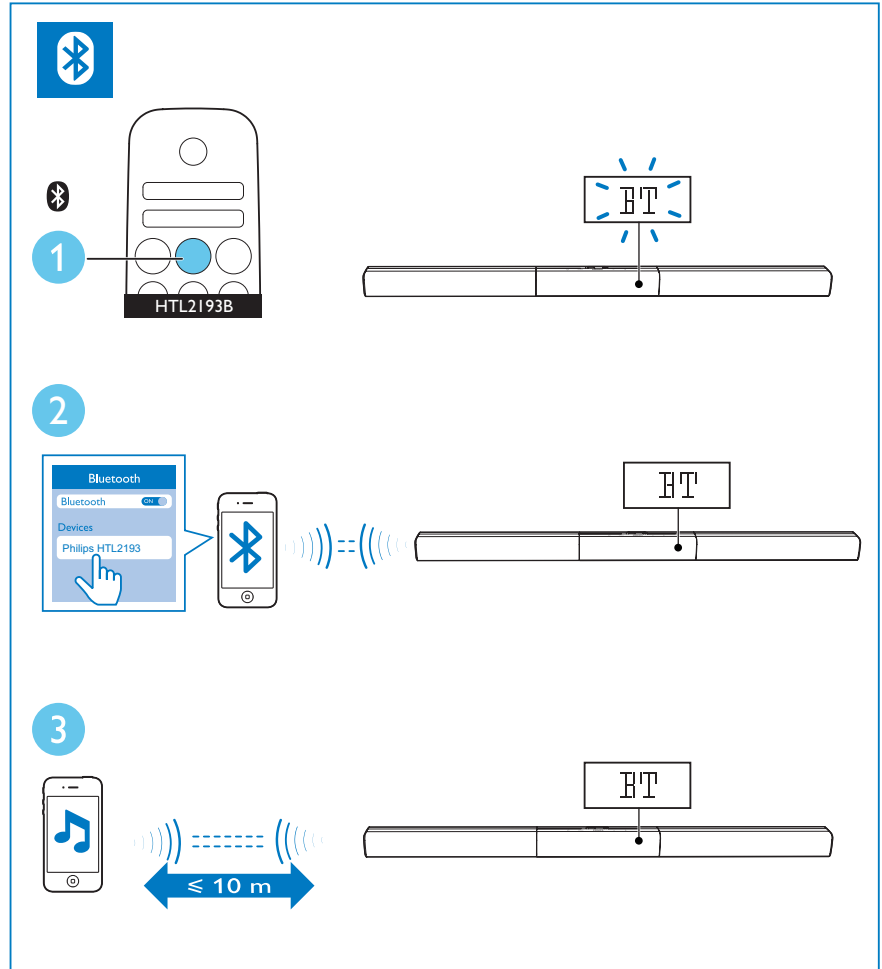


# 7

**EN** Play audio through Bluetooth

**MS-MY** Mainkan audio melalui Bluetooth

**TH** การเล่นเสียงผ่านทาง Bluetooth





**EN** For more information about using this product, visit [www.philips.com/support](http://www.philips.com/support)

**MS-MY** Untuk maklumat lanjut tentang penggunaan produk ini, lawati [www.philips.com/support](http://www.philips.com/support)

**TH** สำหรับข้อมูลเพิ่มเติมเกี่ยวกับการใช้ผลิตภัณฑ์นี้ โปรดเยี่ยมชม [www.philips.com/support](http://www.philips.com/support)



[www.philips.com/support](http://www.philips.com/support)



Manufactured under license from Dolby Laboratories. Dolby, Pro Logic, and the double-D symbol are trademarks of Dolby Laboratories.



The terms HDMI and HDMI High-Definition Multimedia Interface, and the HDMI Logo are trademarks or registered trademarks of HDMI Licensing LLC in the United States and other countries.



The Bluetooth® word mark and logos are registered trademarks owned by Bluetooth SIG, Inc. and any use of such marks by Gibson Innovations Limited is under license. Other trademarks and trade names are those of their respective owners.



Specifications are subject to change without notice  
2015 © Gibson Innovations Limited. All rights reserved.  
This product has been manufactured by, and is sold under the responsibility of Gibson Innovations Ltd., and Gibson Innovations Ltd. is the warrantor in relation to this product. Philips and the Philips Shield Emblem are registered trademarks of Koninklijke Philips N.V. and are used under license from Koninklijke Philips N.V.

HTL2193B\_98\_QSG\_V3.0

